

## ZATARA — VIKING



**Судостроитель:** VIKING

**Год постройки:** 2015

**Модель:** Катер для спортивной рыбалки

**Цена:** **ЦЕНА ЯХТЫ ПО ЗАПРОСУ**

**Местонахождение:** United States

**Длина общая:** 76' 0" (23.16m)

**Ширина:** 20' 3" (6.17m)

**Мин. осадка:** 5' 6" (1.68m)

**Крейс. скорость:** 34 Kts. (39 MPH)

**Макс. скорость:** 41 Kts. (47 MPH)

Купить **Zatara — VIKING** а также выбрать подходящую вам яхту из нашего каталога яхт вам поможет опытный яхтенный брокер Андрей Шестаков. На сегодняшний день компания **Shestakov Yacht Sales Inc.** имеет большое количество яхт в собственном списке продаж, а также тесно сотрудничает со всеми крупными яхтенными производителями по всему миру.

Для того чтобы купить яхту **Zatara — VIKING** а также проконсультироваться по любому вопросу связанному с покупкой, продажей, чартером яхт позвоните по телефону **+7(918)465-66-44**.

# ОГЛАВЛЕНИЕ

ОГЛАВЛЕНИЕ	2
ХАРАКТЕРИСТИКИ	5
Обзор	5
Основная информация	5
Размеры	5
Скорость, вместимость и масса	5
Размещение	5
Корпус и палуба	6
Информация о двигателе	6
ПОДРОБНОЕ ОПИСАНИЕ	7
Decor	7
Salon	7
Salon Day Head	8
Galley	8
Dinette	8
Master Stateroom	9
Master Stateroom Head	9
Forward Stateroom	9
Forward Stateroom Head	9
Starboard Stateroom	10
Starboard Head	10
Port Aft Stateroom	10
Port Stateroom	10
Port Head	11
Companionway	11
Flybridge	11
Cockpit	12
Deck	12

Engine Room	13
Hull	13
Исключения	13
Отказ от ответственности	13
<b>ФОТОГРАФИИ</b>	<b>14</b>
Salon	14
Galley	14
Master Stateroom	14
Helm	14
Salon	14
Salon	14
Galley	15
Salon / Galley	15
Master Stateroom	15
Master Stateroom	15
Master Stateroom	15
Master Head	16
VIP Stateroom	16
VIP Stateroom	16
VIP Stateroom	16
VIP Stateroom	16
Port Guest Stateroom	16
Port Guest Stateroom	16
Port Forward Stateroom	16
Port Head	17
Starboard Stateroom	17
Starboard Head	17
Laundry & Pantry	17
Electronics Room	17

Bridge Seating	17
Helm	17
Helm	17
Helm	18
Helm	18
Bridge	18
Bridge	18
Bridge	18
Cockpit	19
Cockpit	19
Fighting Chair	19
Fighting Chair	20
Cockpit	20
Bow	20
Engine Room	21
Engine Room	21
Engine Room	21
Engine Room	21
Starboard Profile	21
Starboard Profile	21
Aft View	22
Port Profile	22
Port Profile	22
<b>КОНТАКТЫ</b>	<b>23</b>
Контактная информация	23
Телефоны	23
Время работы	23
Адрес	23

# ХАРАКТЕРИСТИКИ

## Обзор

Don't miss the best available Viking 76! This late model 76 convertibles is loaded with extras and a must see. Zatarra comes loaded with SeaKeeper 26, Teak deck and covering boards, Palm Beach towers hardtop, and much more. The interior decor is contemporary style with dark wood interior and too many custom options to name. The 24 month standard warranty from MTU is good through Feb. 4th, 2017. This coverage is transferrable. It is also eligible to be extended for additional cost.

## Основная информация

**Тип судна:** Катер для спортивной рыбалки

**Подкатегория:** Convertible

**Модельный год:** 2015

**Год постройки:** 2015

**Страна:** United States

## Размеры

**Длина общая:** 76' 0" (23.16m)

**Ширина:** 20' 3" (6.17m)

**Мин. осадка:** 5' 6" (1.68m)

## Скорость, вместимость и масса

**Крейс. скорость:** 34 Kts. (39 MPH)

**Макс. скорость:** 41 Kts. (47 MPH)

**Водоизмещение:** 136000 Pounds

**Вместимость воды:** 425 Gallons

**Вместимость сточного бака:** 257 Gallons **Объем топливного бака:** 2945 Gallons

## Размещение

**Всего кают:** 5

## Корпус и палуба

---

**Материал корпуса:** Fiberglass

## Информация о двигателе

---

**Двигатели:** 2

**Производитель:** MTU

**Модель:** 16v2000 M94

**Тип двигателя:** Inboard

**Тип топлива:** Diesel

---

# ПОДРОБНОЕ ОПИСАНИЕ

---

## Decor

---

- Appliqued bedspread and shams in Master Stateroom
- Custom decor
- Salon door type catches on state room doors
- Sofa upgraded style
- Wrapped hatch carpet
- Custom wallpaper material
- Custom headliner material throughout
- Brushed nickel hardware throughout
- Brushed nickel coverplates for switches and receptables throughout
- Satin nickel interior light trim throughout
- LED interior lights throughout
- Prestige decor
- Galley accessory kit
- Teak interior doors
- Carpet throughout
- Flybridge cushions in ultraleather brisa
- Mezzanine seating with bolsters top and leg in ultraleather brisa
- Armrest for mezzanine seating
- Vessel sinks in heads with wall mounted faucets
- Custom interior hardware throughout
- Satin walnut interior finish throughout
- Modern style interior wood design
- Wallcover in headliner material
- Master Stateroom walls in 3 sections, top and bottom in Majilite Hammered Metal Legend Parchment, Center in Majilite Novasuede Legend Sand
- Companion walls in 3 sections, top and bottom in Majilite Hammered Metal Legend Parchment, Center in Majilite Novasuede Legend Sand
- Hull sealers / barfront in Hammered metal Legend Parchment
- Helm and companion chairs in ultraleather brisa
- Viking Yachts Symbol on all hand towels and on an accent pillow for each stateroom
- All faucets are deck mounted, except MSR which is wall mounted
- All heads with Kohler rectangular sinks
- All Staterooms with crown molding
- Water delivery kit with tool set

## Salon

---

- Electric salon door

- Overhead teak handrail
- Carpet runner, full, canvas
- Dimmers for quartz lights
- Teak trim where attic meets carpet
- Custom Amtico flooring
- 55" Samsung pop up TV in entertainment center
- Teak valances
- AC receptacle under dinette table
- Teak strips in headliner
- Day head in salon
- Thicker side profile for cocktail and dinette table
- Bose V35 entertainment system with Blu Ray
- Carpet runners same color as 76619
- Light block above dinette. Block to follow the shape of the table with 2 lights inside

---

## Salon Day Head

---

- Mirror ceiling
- Custom amtico flooring
- Brushed nickel towel bars and rings
- Satin nickel faucet
- Vanity tops to be sequoia brown, leathered
- Hammered nickel sink

---

## Galley

---

- Dishwasher
- Trash compactor
- 110V outlet next to switch on bottom of upper cabinet above sink
- Undermount stainless steel sink
- Mount range burner surface
- Amtico flooring
- Satin nickel faucet
- Backsplash mirror
- Recessed cooktop in granite with lids
- Small storage cabinet against outboard wall
- Granite countertop sequoia brown
- Crown molding over galley and dinette areas

---

## Dinette

---



- Teak table with teak pedestal
- AC receptable under table
- Dimmer on overhead led lights
- Additional TV over dinette (46" LED TV)

---

## Master Stateroom

---

- Mattress viking slumber #8
- Additional telephone outlet
- Teak on end table tops
- 55" Flat Screen TV
- Frame around TV
- Rope lightning in soffit
- Custom L-Shape seating area
- Extended teak wall covering above desk area
- Mirror above desk area
- Full sofa

---

## Master Stateroom Head

---

- Mirror ceiling
- Mirror around upper vanity insert
- Teak face on lower vanity
- Custom antico flooring
- Shower fixtures in satin nickel
- Towel bars and rings in brushed nickel
- Satin nickel faucet
- Vanity tops in sequoia brown, leathered

---

## Forward Stateroom

---

- Mattress viking slumber #6
- 26" Flat screen TV

---

## Forward Stateroom Head

---

- Mirror ceiling
- Teak face on lower vanity
- Mirror around upper vanity insert
- Custom antico flooring

- Satin nickel shower fixtures
- Brushed nickel towel bars and rings
- Brushed aluminum shower door
- Satin nickel faucet
- Vanity tops in sequoia brown, leathered

---

## Starboard Stateroom

---

- Teak top on locker
- 19" Flat screen TV
- 12V DVD/CD Stereo
- Dimmer on overhead led lights
- Mattress viking slumber #6
- Side by side bunk beds
- Entry door moved to washer and dryer door location

---

## Starboard Head

---

- Mirror ceiling
- Mirror around upper vanity insert
- Teak face on lower vanity
- Custom antico flooring
- Chrome shower door
- Shower fixtures in satin nickel
- Towel bars and rings in brushed nickel
- Satin nickel faucet
- Vanity tops in sequoia brown, leathered

---

## Port Aft Stateroom

---

- 19" Flat screen TV
- 12V DVD/CD Stereo
- Mattress viking slumber #6

---

## Port Stateroom

---

- 12V Stereo/CD/DVD player
- Teak top on locker storage
- 19" Flat screen TV
- Large bunk bed

- Upper bunk pullman style

---

## Port Head

---

- Mirror ceiling
- Teak face on lower vanity
- Custom amtico flooring
- Chrome shower door
- Satin nickel shower fixtures
- Brushed nickel towel bars and rings
- Faucet in satin nickel
- Vanity tops in sequoia brown, leathered

---

## Companionway

---

- Costa canvas carpet runner with step covers
- Vertical teak strips between wall panels

---

## Flybridge

---

- Electronic trolling valves
- Recessed electronic valves
- A/C at Helm
- Radar mast
- Hatch over bridge ladder opening
- Push button for electronic boxes
- Fresh water outlet on bridge
- Bridge freezer box
- VHF Radio ICOM-604
- Refrigerate bridge drink box
- Dedicated batteries for electronics
- Teak helm pod
- Switch in radiobox for electronic drop-down overhead box in hardtop
- Single lever control handles with bow thruster button in handles
- MTU bridge controls
- Handrail on side of helm console above helm access door
- Release Marine upgraded helm chairs
- Radar mast on top of PBT radar pod-as
- Clam shells on electronic box lids
- Compass installed in recessed electronic box-as
- Watermaker display at helm-as

- Split lids for radio boxes-as

## Cockpit

---

- Mezzanine in cockpit
- Transom swim steps
- Crushed ice machine with discharge in port mezzanine box
- (2) Rod holders in each haunch (for a total of 4)
- Fighting chair
- Awlgrip lazarette
- Plumb transom box
- Live well with glass window and lights
- Y-Valve for fresh and salt water washdowns
- Refrigerated cockpit step box
- Transom custom littering
- Transom coaming with gate and fish box
- Teak cockpit sole
- Storage lockers under port and starboard coamings
- Split lid for cockpit fish box
- Cruisair "cool breeze" mezzanine and ladder treads
- Tri colored lights in overhang (red, white and blue)
- (4) step armstrong ladder under transom door

## Deck

---

- Fresh water washdown at bow inside anchor locker
- White rub rail
- Bow rail ABYC compliant
- Anchor bracket in anchor locker
- Recessed trim tab covers
- SS gas springs for anchor locker hatch
- Salon forward window mask
- Side mounted handrails, following top of salon window
- Lewmar C4 hydraulic capstan
- Extended handrails above salon window 48" wrapping around house
- White rope lightning under bridge forward overhang
- Oval style port light
- Bottom painted dark blue
- Bootstripe same as 70722
- White rope lightning under bridge forward overhang
- Tri-colored rope lightning under forward bridge overhang: Red, White and Blue
- Custom anchor chute

---

## Engine Room

---

- Awlgrip brass thru-hulls and sea strainers in it plus forward bilges
- Dual power steering pumps IPO of standart single on Port Engine
- Headhunter fresh water pump
- 110V outlet on aft bulkhead at entranceway
- Clear acrylic shaft log access covers
- Tool boxes, 16" wide
- All pumps snow white color, except fresh water pump
- Generator gas-water separators for both generators
- Charles autophase C-Power shore power transformer
- 1400 GPD Watermaker with auto backflush

---

## Hull

---

- Additional Forward Fuel tank (3 tanks total)
- Fiberglass side thru-hulls
- Prop pockets
- Hydraulic bow thurster
- Seakeeper Gyro S26
- Hull color snow white
- Hull with stars and stripesblue
- Boot stripe viking standard black
- Bottom painted viking blue
- Boot stripe layout with multiple colors and stripes

---

## Исключения

---

При продаже яхты исключаются личные вещи владельца.

---

## Отказ от ответственности

---

Компания предоставляет описание судна или яхты добросовестно, но не может гарантировать точность этой информации, а также не ручается за техническое состояние. Покупатель должен проинструктировать своих агентов или оценщиков исследовать представленную информацию более подробно, по собственному желанию. Продажа судна или яхты, изменение цены или снятие с продажи будет происходить без предварительного уведомления.

# ФОТОГРАФИИ

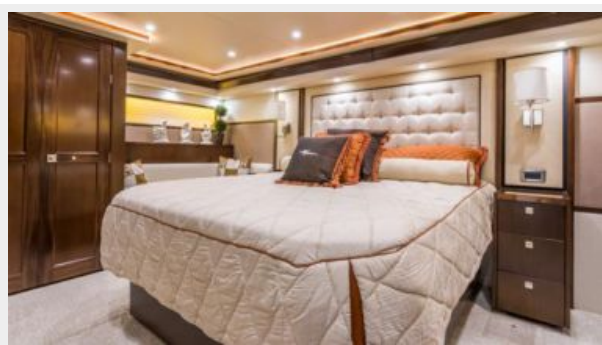
Salon



Galley



Master Stateroom



Helm



Salon



Salon



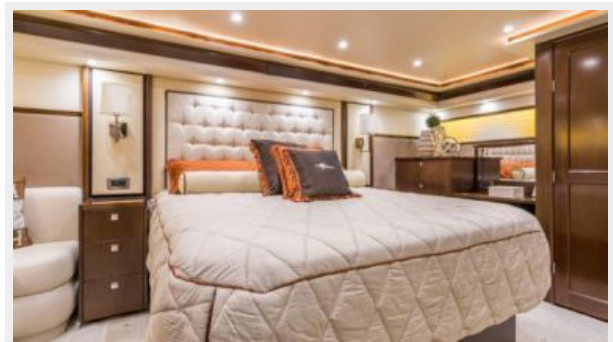
**Galley**



**Salon / Galley**



**Master Stateroom**



**Master Stateroom**



**Master Stateroom**





**Master Head**



**VIP Stateroom**



**VIP Stateroom**



**VIP Stateroom**



**VIP Stateroom**



**Port Guest Stateroom**



**Port Guest Stateroom**



**Port Forward Stateroom**





**Port Head**



**Starboard Stateroom**



**Starboard Head**



**Laundry & Pantry**



**Electronics Room**



**Bridge Seating**



**Helm**



**Helm**



Helm



Helm



Bridge



Bridge



Bridge







Cockpit



Cockpit



Fighting Chair



### Fighting Chair



### Cockpit



### Bow





**Engine Room**



**Engine Room**



**Engine Room**



**Engine Room**



**Starboard Profile**



**Starboard Profile**



Aft View



Port Profile



Port Profile



# КОНТАКТЫ

---

Андрей Шестаков (Andrey Shestakov) – ведущий яхтенный брокер отдела продаж яхт и судов компании Shestakov Yacht Sales Inc. Официальный представитель Shestakov Yacht Sales Inc. для русскоговорящих клиентов в центральном офисе компании в Майами/Форт Лодердейл/Флорида/США.

## Контактная информация

---

Email: [andrey@shestakovyachtsales.com](mailto:andrey@shestakovyachtsales.com)

Web: [shestakovyachtsales.com](http://shestakovyachtsales.com)

## Телефоны

---

Краснодарский край: **+7(918)465-66-44**

США, Майами, Флорида: **+1(954)274-4435**

## Время работы

---

Понедельник – Суббота: **9:00 - 21:00**  
EDT

Воскресенье: **Закрито**

## Адрес

---



Harbour Towne Marina, 850 NE 3rd St,  
STE 213, Dania, FL 33004