

75MY-502 — VIKING



Builder: VIKING

Year Built: 2016

Model: Motor Yacht

Price: PRICE ON APPLICATION

Location: United States

LOA: 75' 0" (22.86m)

Beam: 20' 1" (6.12m)

Max Draft: 5' 2" (1.57m)

Our experienced yacht broker, Andrey Shestakov, will help you choose and buy a yacht that best suits your needs **75MY-502 — VIKING** from our catalogue. Presently, at Shestakov Yacht Sales Inc., we have a wide variety of yachts available on our sale's list. We also work in close contact with all the big yacht manufacturers from all over the world.

If you would like to buy a yacht **75MY-502 — VIKING** or would like help answering any questions concerning purchasing, selling or chartering a yacht, please call **+1(954)274-4435**

TABLE OF CONTENTS

TABLE OF CONTENTS	2
SPECIFICATIONS	3
Overview	3
Basic Information	3
Dimensions	3
Speed, Capacities and Weight	3
Accommodations	3
Hull and Deck Information	3
Engine Information	4
DETAILED INFORMATION	5
Manufacturer Provided Description	5
Dealer Selected Options	6
Exclusions	10
Disclaimer	10
PHOTOS	11
CONTACTS	12
Contact details	12
Telephones	12
Office hours	12
Address	12

SPECIFICATIONS

Overview

The Viking 75 Motor Yacht is a work in progress, but the renderings provide a glimpse of its special features and spacious accommodations. The tri-level layout demonstrates an intelligent use of space with accents on family comfort and usability. Twin molded fiberglass staircases lead from the teak planked swim platform to the aft deck with its U-shape lounge and table, a perfect invitation for al fresco dining at the yacht club, or on the hook in Nantucket Harbor.

Basic Information

Category: Motor Yacht	Model Year: 2016
Year Built: 2016	Country: United States

Dimensions

LOA: 75' 0" (22.86m)	Beam: 20' 1" (6.12m)
Max Draft: 5' 2" (1.57m)	MFG Length: 78' 6" (23.93m)

Speed, Capacities and Weight

Displacement: 130000 Pounds	Water Capacity: 302 Gallons
Fuel Capacity: 1650 Gallons	

Accommodations

Total Cabins: 4	Total Heads: 5
-----------------	----------------

Hull and Deck Information

Hull Material: Fiberglass	Hull Color:
---------------------------	-------------

Engine Information

Engines: 2

Manufacturer: Caterpillar

Model: C32A

Engine Type: Inboard

Fuel Type: Diesel

DETAILED INFORMATION

Manufacturer Provided Description

Viking 75 Motor Yacht

“What goes around comes around” is a popular saying of Viking’s co-founder and president, Bill Healey, and one that emerges again as Viking has relaunched its motor yacht series.

Viking exited the motor yacht market with the last 60 Cockpit Sport Yacht delivered in 2001. This model was a strong performer and during its reign was recognized by Boating magazine as the publication’s Boat of the Year in 1995. Much has changed in the motor yacht arena over the years and the development of the new 75 Motor Yacht, a strategic collaboration between the Viking Yacht design team and the firm of Michael Peters Yacht Design of Sarasota, Florida, reflects a number of innovations and refinements in this portion of the market.

The exterior profile is sleek, curvy and embodies a number of style cues from our convertibles including the teardrop salon windows, and distinctive molded feature lines in the hull and superstructure. The fiberglass hardtop and raked side supports replicates the look of our Sky Bridge, a very popular appointment found aboard many of our enclosed bridge convertibles. An integrated molded swim platform is planked with teak for secure footing for boarding, as well as water sports activities. Shapely port lights and master stateroom hull side windows contribute style and function, and the full wrap-around anodized aluminum bow rail and wide side decks make for convenient passage when moving forward to handle dock lines or anchoring.

As always, a new Viking starts with a freshly designed hull to take full advantage of the available power so as to perform to our formidable standards. The 75 Motor Yacht has a convertible running surface to not only utilize the available horsepower to its best advantage for speed and efficiency, but also for ease of handling and sea-keeping ability. These elements are major differences between our 75 MY and other motor yachts of similar and even longer LOA. The first boat, delivered with a pair of C32-A Caterpillars developing 1,925 mhp each. With a 30 knot cruise and a top end in the mid-30 knot range. With this kind of speed, longer distances can be comfortably covered in a day’s run opening up new cruising areas and expanding opportunities for traveling in motor yacht fashion.

The Viking 75 Motor Yacht is filled with special features and spacious accommodations. The tri-level layout demonstrates an intelligent use of space with accents on family comfort and usability. Twin molded fiberglass staircases lead from the teak planked swim platform to the aft deck with its U-shape lounge and table, a perfect invitation for al fresco dining at the yacht club, or on the hook in Nantucket Harbor. A glass door slides open to the salon and you are greeted with the warmth of hand-finished teak joinery, and the rich textures of designer fabrics and soft leathers balanced with natural lighting that feeds in from the salon windows.

A custom made sofa and cocktail table on the port side faces teak cabinetry with a built-in

entertainment center and flat screen television, which rises on an electric lift. Moving forward, the center area combines a formal dining area with seating for six, and a galley capably equipped to turn out anything from a shrimp cocktail to a 20-pound roast.

A lower helm station is complemented with an electronic navigation and communication package provided by Viking sister company Atlantic Marine Electronics. The helm area features a pair of leather seats and additional seating is available at the port settee. Lounge seating also is provided forward on the main exterior deck, along with a large sun pad making this a most versatile area at the dock or under way.

Below, accommodations include five nicely proportioned staterooms, each with its own head and shower, including a full beam master suite and crew quarters with private access from the stern.

Dealer Selected Options

VIKING ONE YEAR LIMITED WARRANTY

FB: ENCLOSED FLYBRIDGE

LAYOUT: GLOSS FINISH THROUGHOUT

LAYOUT: INTERIOR WOOD - WALNUT

ENGINE ROOM

POWER: CAT C32A 1925HP

POWER: CAT THREE 60 CONTROLS INCLUDES

BOW THRUSTER AND JOYSTICKS

ENG RM: BACK-UP FUEL TRANSFER PUMP IN PARALLEL

ENG RM: CLEAN OUT BILGE PUMP WITH GARDEN HOSE ADAPTER ON INLET

ENG RM: ADDITIONAL FUEL IN WING TANKS MINIMUM OF 230 GALLONS

ENG RM: S&I 1400 GPD WATERMAKER WITH AUTO BACKFLUSH

EXTERIOR

FB: SINGLE STIDD HELM CHAIR

ENCL FB: OPENING HARD TOP ROOF W/GLASS PANEL

INSTALL TEAK ON FORE DECK

ENCL FB: INSTALL KENYON GRILL IN WET BAR

AFT DECK: AIR CONDITIONING "COOL BREEZE"

GALLEY: UPRIGHT REFRIGERATOR

GALLEY: DISHWASHER

GALLEY: TRASH COMPACTOR

SALON: CARPET RUNNER, PARTIAL, CANVAS

MSR: S&I SAFE UNDER LIFT UP BED TOP

MSR HEAD: MIRROR CEILING IN HEAD

FSR HEAD: MIRROR CEILING

STBD SR: S & I 19" FLAT SCREEN TELEVISION

STBD HEAD: MIRROR CEILING

PSR: S&I 19" FLAT SCREEN TELEVISION

PORT HEAD: MIRROR CEILING

CAPTAINS SR: S&I 19" FLAT SCREEN TELEVISION

HULL COLOR: CUSTOM HULL COLOR- PAINT *FLAG BLUE

HULL: INSTALL SEAKEEPER GYRO

EXTERIOR

FB: RADAR MAST - SINGLE

ENCL FB: BRIDGE TABLE TO BE WOOD

FB: OUTDOOR BAR ON BRIDGE

FB: S & I FRESH WATER OUTLET ON AFT BRIDGE DECK

ENCL FB: ULTRALEATHER UPGRADE FOR ALL STIDD CHAIRS

ENCL FB: SUPPLY STIDD COMPANION CHAIRS AT HELM AS ON HULL

FB: BAR: TO BE CORIAN CLAMSHELL WITH 1/4" BEVEL EDGE

FB: BRIDGE DECK LOUNGE CHAIRS (2) , WBCO

FB: BRIDGE DECK TABLE, (1) WBCO

AFT DECK: PORT AND STBD AFT DECK STATIONS

AFT DECK: AFT DECK ARMCHAIRS, (2) WBCO-BB

DECK/EXT: FUEL FILLS ON BOTH PORT & STBD SIDE

DECK/EXT: S&I SLIDING FENDER TRACK UNDER RUB-RAIL. RUN FROM TRANSOM TO EDGE OF CABIN

DECK/EXT: STEREO AND SPEAKERS AT FOREDECK SEATING AREA

DECK/EXT: CUSHIONS FOR FOREDECK SUNPAD

HULL: CUSTOM BOOT STRIPE LAYOUT WITH MULTIPLE COLORS & STRIPES

DECK/EXT: BACK DECK SEATING, FORWARD DECK SEATING: (UL) #396-3024

BRISA DISTRESSED OUTDOOR-CHAMOIS

DECK/EXT: FORWARD DECK PAD: (773) SURFSIDE -COCOA

INTERIOR

GALLEY: CONVENTIONAL OVEN UNDER SURFACE MOUNT STOVETOP

GALLEY: CUSTOM AMTICO FLOORING IN GALLEY AROW #7600 VINTAGE TEAK, STRAIGHT PLANK 3" X 36" ** INCLUDING UPPER DINING

GALLEY: S & I MIELE CVA 6800 BUILT IN COFFEE SYSTEM

GALLEY: COUNTERTOP; (MACLAREN) LA DOLCE VITA , POLISHED W/ OGEE EDGE

GALLEY: BACKSPLASH TO BE (MACLAREN) LA DOLCE VITA, POLISHED

SALON: CUSTOM AMTICO FLOORING AT SALON ENTRANCEWAY

AROW #7600 VINTAGE TEAK, STRAIGHT PLANK 3" X 36"

COMPANIONWAY, COSTA, CANVAS CARPET RUNNER W/ STEP COVERS

DAY HEAD: VANITY TOP TO BE GRANITE (MACLAREN) LA DOLCE VITA ,

POLISHED WITH OGEE EDGE

SALON: CUSTOM OTTOMAN IPO TABLE

SALON: INSTALL LEATHER HANDRAILS FOR INTERIOR STAIRS AND

COMPANIONWAY

SALON: (6) SCONCES; BOYD #10029 BELMONT ADA WITH SCREW ON SHADE IN

OYSTER LINEN (WBCO)

SALON: (2) CHAIRS: IN (ZIMMER AND ROHDE) TUNIS #01286-893;

29" W X 30" D X 33" H (COSTA)-BB

SALON: [LAUNDRY ROOM AREA]: FLOORING TO BE AMTICO:

AROW #7600 VINTAGE TEAK, STRAIGHT PLANK 3" X 36"

DAY HEAD: CUSTOM FLOOR IN PLACE OF AMTICO CAMBRIA FAIRBOURNE , 12" X12"

MSR: HANGING LOCKER DOORS TO BE MIRRORED

MSR: INSTALL DRAWERS IN PLACE OF VANITY ON STBD SIDE

MSR: NIGHTSTAND TOPS AND COLUMNS: CAMBRIA FAIRBOURNE

FAIRBOURNE WITH FLAT POLISHED EDGE-BB

MSR HEAD: CUSTOM FLOORING TO BE CAMBRIA FAIRBOURNE, 12" X 12"

MSR HEAD CUSTOM: SHOWER FLOOR: 3" BORDER OF CAMBRIA FAIRBOURNE;

FIELD: (AVALON FLOORING) BLEND MOSAIC SYSTEM COLLECTION 2,

#MSO1011 MILANO BLEND POLISHED STRAIGHT 1 N (SAME AS BORDER ON WALLS)

THRESHOLDS AND BASE: CAMBRIA FAIRBOURNE

MSR HEAD: VANITY TOP TO BE (MACLAREN) LA DOLCE VITA , POLISHED WITH OGEE EDGE

MSR HEAD: SHOWER WALLS: CAMBRIA FAIRBOURNE 12" X 12" , WITH 6" BORDER

ON 3 WALLS: (AVALON FLOORING) BLEND MOSAIC SYSTEM COLLECTION 2,

#MSO1011 MILANO BLEND POLISHED STRAIGHT 1 N, 6" H TO MATCH FLOOR

FSR: S&I 12V CD/DVD STEREO WITH BLUE TOOTH CAPABILITY

FSR: SCONCES: (2) IN ROBERT ABBEY #D1973

FSR HEAD: CUSTOM FLOOR IN PLACE OF AMTICO; CAMBRIA FAIRBOURNE, 12" X 12"

FSR HEAD: VANITY TOP TO BE GRANITE CAMBRIA FAIRBOURNE WITH OGEE EDGE

FSR HEAD: SHOWER WALLS: CAMBRIA FAIRBOURNE INSERT

STBD SR: S&I 12V CD DVD STEREO WITH BLUETOOTH CAPABILITY

STBD STRM: VAULT HEADLINER TO CREATE VOLUME

STBD STRM: SCONCES (1) QUICK #15-9 DOMINIQUE WITH FIXED ARM, POLISHED NICKEL WITH LINEN COLOR LAMP SHADE

STBD HEAD: CUSTOM FLOOR IN PLACE OF AMTICO; CAMBRIA FAIRBOURNE, 12" X 12"

STBD HEAD: VANITY TOP TO BE GRANITE CAMBRIA FAIRBOURNE WITH OGEE EDGE

STBD HEAD: SHOWER WALLS: CAMBRIA FAIRBOURNE INSERT

CREW SR: COMMON AREA: FLOORING: AMTICO ARROW #7600 VINTAGE TEAK, STRAIGHT PLANK 3" X 36"

CREW SR: COMMON AREA: COUNTERTOP: CAMBRIA NEW QUAY, WITH 1/4" BEVEL EDGE

CREW SR: SCONCES (2) QUICK AUDREY WALL READING LIGHT, BLACK LEATHER AND POLISHED NICKEL

CREW HEAD: CUSTOM AMTICO FLOORING AROW #7600 VINTAGE TEAK, STRAIGHT PLANK , 3" X 36"

CREW HEAD: VANITY TOP TO BE GRANITE CAMBRIA NEW QUAY, WITH 1/4" BEVEL EDGE

EDGE

PORT STRM: S&I 12V CD DVD STEREO WITH BLUETOOTH CAPABILITY

PORT HEAD: CUSTOM FLOOR IN PLACE OF AMTICO; CAMBRIA FAIRBOURNE 12" X 12"

PORT HEAD: VANITY TOP TO BE GRANITE CAMBRIA FAIRBOURNE WITH OGEE EDGE

PORT HEAD: SHOWER WALLS: CAMBRIA FAIRBOURNE INSERT

PORT SR: SCONCES (2) QUICK #12-25 DOMITILA, POLISHED NICKEL WITH LINEN COLOR LAMPSHADE

CAPTAINS SR: SCONCES (1) QUICK #15-30 DOMINIQUE IN POLISHED NICKEL WITH LINEN COLOR LAMPSHADE

DÉCOR

DECOR: SOFA, UPGRADED STYLE-DEWBERRY STYLE IN(UL) #303-5234 BRISA -CAMEO *NO ARMS

DECOR: S&I UPHOLSTERED CHAIRS

DECOR: CUSTOM WALLPAPER MATERIAL:

DECOR: CUSTOM WALLPAPER INSTALLATION:

DECOR: CUSTOM HEADLINER MATERIAL THROUGHOUT BOAT; HAMMERED METAL LEGEND PARCHMENT (INCLUDING COMPANION WALLS AND SEALERS)

DECOR: BRUSHED NICKEL HARDWARE THROUGHOUT

DECOR: CARPET THROUGHOUT

SALON, COMPANIONWAY ALL STATEROOMS (EXCEPT CREW) A

AND BRIDGE: FABRICA PANDORA #PD12 BUCKWHEAT

CAPTAIN AND CREW STATEROOM: FABRICA PANDORA #PD007 MADAGASCAR

DECOR ITEM: HELM AND COMPANION CHAIRS: STIDD-BLACK

DECOR: ALL INTERIOR HANDRAILS TO BE GARRETT LEATHER BRANDY
HERRINGBONE

#TW-304200L

DECOR: LEVEL 5 GRANITE COUNTER UPGRADE IN GALLEY , DAY HEAD,
MASTER HEAD, PORT HEAD, STBD HEAD AND FWD HEAD

DECOR: GALLEY; COMMERCIAL APPLIANCE UPGRADE

DECOR: AFT BRIDGE DECK: CARPET: (COSTA MARINE) INFINITY WICKER WEAVE
H.D. #1413, COLOR #1

DECOR: ** FSR BEDKEEPER TO BE UPHOLSTERED IN
FABRIC SELECTED (ALL OTHER BEDKEEPERS TO REMAIN
FINISHED WOOD

DECOR: PRESTIGE DECOR

DECOR: GALLEY ACCESSORY KIT **ELITE GALLEY , LENNOX

DECOR: ACCESSORY KIT

DECOR: ALL DOOR HANDLES TO BE SATIN NICKEL WITH LEATHER INSERT

DELIVERY

DELIVERY: SHIP ABOARD SPARE LAMPS, DOMESTIC

DELIVERY: COMBO TV AND PHONE CABLE, WHITE

ATLANTIC MARINE ELECTRONICS-75'MY:

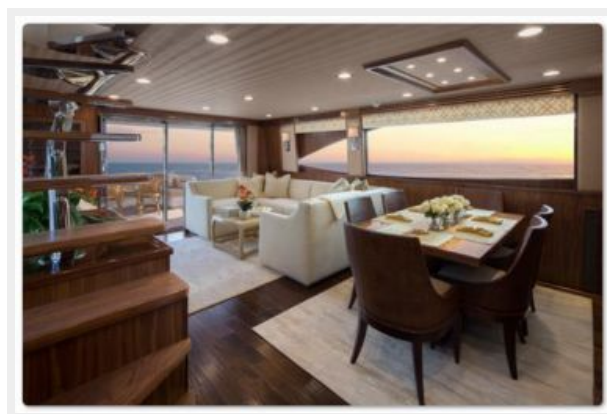
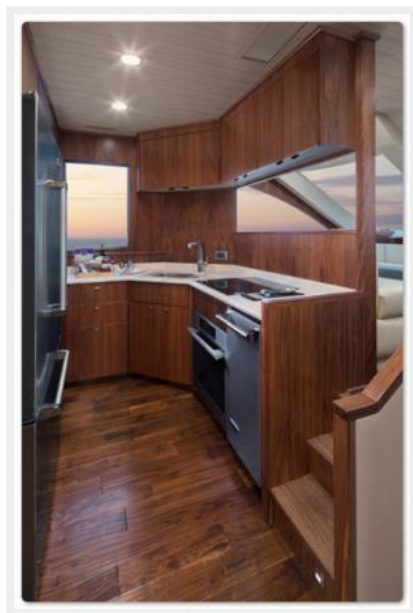
Exclusions

Owner's personal belongings.

Disclaimer

The Company offers the details of this vessel or yacht in good faith but cannot guarantee or warrant the accuracy of this information nor warrant the condition of the vessel. A buyer should instruct his representatives, agents, or his surveyors, to investigate such details as the buyer desires validated. This vessel or yacht is offered subject to prior sale, price change, or withdrawal without notice.

PHOTOS



CONTACTS

Andrey Shestakov, leading yacht broker of the sales department of Shestakov Yacht Sales Inc. Shestakov Yacht Sales Inc., the official representative of the Miami/Fort Lauderdale FL headquarters.

Contact details

Email:
andrey@shestakovyachtsales.com

Web: shestakovyachtsales.com/en/

Telephones

USA: **+1(954)274-4435**

Office hours

Monday – Saturday: **9:00 - 21:00 EDT**

Sunday: **closed**

Address



Harbour Towne Marina, 850 NE 3rd St,
STE 213, Dania, FL 33004