

# PALADIO



**Year Built:** 1993

**Model:** Motor Yacht

**Price:** PRICE ON APPLICATION

**LOA:** 80' 5" (24.5mm)

**Beam:** 19.68

**Max Draft:** 6' 3" (1.9mm)

**Cruise Speed:** 20 Knots Kts. (23 MPH)

**Max Speed:** 25 Knots Kts. (29 MPH)

Our experienced yacht broker, Andrey Shestakov, will help you choose and buy a yacht that best suits your needs **Paladio** — n/a from our catalogue. Presently, at **Shestakov Yacht Sales Inc.**, we have a wide variety of yachts available on our sale's list. We also work in close contact with all the big **yacht manufacturers** from all over the world.

If you would like to buy a yacht **Paladio** — n/a or would like help answering any questions concerning purchasing, selling or chartering a yacht, please call **+1(954)274-4435**

---

# TABLE OF CONTENTS

---

TABLE OF CONTENTS	2
SPECIFICATIONS	3
Overview	3
Basic Information	3
Dimensions	3
Speed, Capacities and Weight	3
Accommodations	4
Hull and Deck Information	4
Engine Information	4
PHOTOS	5
CONTACTS	6
Contact details	6
Telephones	6
Office hours	6
Address	6

---

# SPECIFICATIONS

---

## Overview

---

PALADIO was built for an experienced and knowledgeable yacht owner with the assistance of Camper & Nicholsons International in 1993. She has been well looked after and cared for and has super accommodation for 10 guests in a well proven layout including a comfortable sofa/pilot berth in the bridge area. Her main features are her stylish lines, ample fly-bridge, bathing platform and aft deck and spacious owner and VIP double bedded cabins. Isabelle Blanquet decorated the interior and found a very comfortable arrangement for the saloon and dining area which have encouraged the owner to use the yacht year round. PALADIO is being sold as her owner is building a much larger yacht.

## Basic Information

---

**Category:** Motor Yacht

**Model Year:** 1993

**Year Built:** 1993

## Dimensions

---

**LOA:** 80' 5" (24.5mm)

**Beam:** 19.68

**Max Draft:** 6' 3" (1.9mm)

## Speed, Capacities and Weight

---

**Cruise Speed:** 20 Knots Kts. (23 MPH) **Max Speed:** 25 Knots Kts. (29 MPH)

**Max Speed Range:** 500 Kts.

**Gross Tonnage:** 121 Pounds

**Water Capacity:** 2000 Gallons

**Fuel Capacity:** 1585.03 Gal Gallons

**Fuel Consumption:** 79.25 Gal Gallons

---

## Accommodations

---

**Total Cabins:** 4

**Total Berths:** 10

**Crew Berths:** 2

---

## Hull and Deck Information

---

**Hull Material:** Composite Fiberglass

**Interior Designer:** isabelle blanquet

---

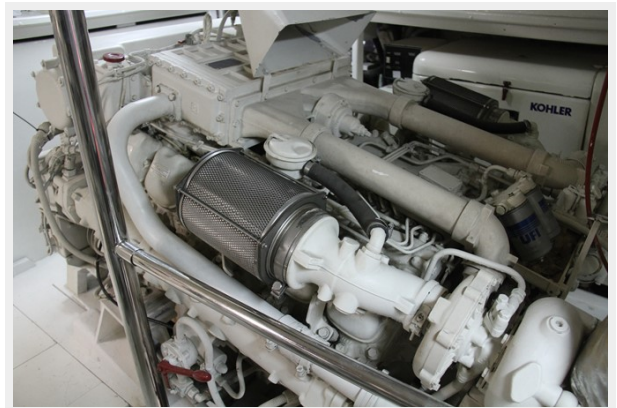
## Engine Information

---

**Engines:** 2

**Manufacturer:** MAN

# PHOTOS



# CONTACTS

---

Andrey Shestakov, leading yacht broker of the sales department of Shestakov Yacht Sales Inc. Shestakov Yacht Sales Inc., the official representative of the Miami/Fort Lauderdale FL headquarters.

## Contact details

---

Email: **andrey@shestakovyachtsales.com**

Web: [shestakovyachtsales.com/en/](https://shestakovyachtsales.com/en/)

## Telephones

---

USA: **+1(954)274-4435**

## Office hours

---

Monday – Saturday: **9:00 - 21:00** EDT

Sunday: **closed**

## Address

---



Harbour Towne Marina, 850 NE 3rd St, STE 213, Dania, FL 33004