

ZAR — CUSTOM BUILT



Builder: CUSTOM BUILT

Year Built: 1942

Model: Schooner

Price: PRICE ON APPLICATION

Location: Denmark

LOA: 132' 7" (40.40m)

Beam: 23' 1" (7.03m)

Min Draft: 7' 7" (2.30m)

Max Draft: 10' 3" (3.10m)

Cruise Speed: 6 Kts. (7 MPH)

Max Speed: 11 Kts. (13 MPH)

Our experienced yacht broker, Andrey Shestakov, will help you choose and buy a yacht that best suits your needs **ZAR — CUSTOM BUILT** from our catalogue. Presently, at Shestakov Yacht Sales Inc., we have a wide variety of yachts available on our sale's list. We also work in close contact with all the big yacht manufacturers from all over the world.

If you would like to buy a yacht **ZAR — CUSTOM BUILT** or would like help answering any questions concerning purchasing, selling or chartering a yacht, please call **+1(954)274-4435**

TABLE OF CONTENTS

TABLE OF CONTENTS	2
SPECIFICATIONS	4
Overview	4
Basic Information	5
Dimensions	5
Speed, Capacities and Weight	6
Accommodations	6
Hull and Deck Information	6
Engine Information	6
DETAILED INFORMATION	7
General	7
Details	7
Speed	8
Mechanical	8
Electronics	8
Accommodations	9
Crew	9
Safety & Fire Protection	9
Miscellaneous	10
Exclusions	10
Disclaimer	10
PHOTOS	11
Winter prepared	12
Engineroom	13
Galley	14
Dining Area	15
Electric fire	15
Captains Cabin	15

CONTACTS	18
Contact details	18
Telephones	18
Office hours	18
Address	18

SPECIFICATIONS

Overview

June/2019: Upgraded to charter on navigational equipment and safety.

This beautiful three masted topsail schooner was built in 1942 at the renowned J. Ring Andersen's Shipyard in Svendborg, Denmark. She was built as a cargo ship from a design based on drawings from the end of the 19th century. In 1974 she was bought by a privately owned shipping company in Denmark, whom changed the cargo ship into a pleasure craft. In 1996 she was acquired by Carlsberg A/S, the very company she had transported most of their beerpackaging for back in the days as a cargo ship. She was refurbished and new main engine was installed. In their ownership from 1996 to 2010 she was used for representation, teambuilding and meetings as well as attending Tallship races.

From 2010 until today she has been in the hands of the widow from the shipping company owner and subsequently fully refurbished incl. engine overhaul and new masts. (Under Tall-Ship expert supervision)

All restoration and yearly service has been carried out by the building shipyard J. Ring Andersen.

Today ZAR stands out as one of the finest classic schooners available in Northern Europe and the only one certified by Det Norske Veritas (today DNV GL A/S).

All service and maintenance has been done according to Traditional Tallship tradition.

DETAILS:

Constructed in 1942 as one in 4-5 sisterships Passengers: 9/46 - 9 sleeping, 46 cruising Air Draught: 24,2 m LOA 40,4m (incl. bowsprit) Length btw. perpendiculars 25,51m Registered length: 26,43m Side Height 4,3m Sail Area: 375 m² (ca. 4000 sq. ft) GRT 95,14 (using 1947 Tonnage Convention) GRT 104 (using 1969 Tonnage Convention) Net Tonnage 31t Displacement Max approx. 203,3t Lightweight 167t **SPEED:** Cruise/Sail: 5-6 knots Cruise/motor: 6-8,5 knots Max reported/sail: 10,4 knots **ENGINES:** Main: Detroit V8 N71, 10,4ltr, 250BHP (@1900RPM) - replaced 1996/overhauled 2010 Auxiliary: John Deere 4045 DFM 70 Generator: 400 VAC Kohler 33EFUZD 33KW (from 2009) ZF Marine Gear from 2011. Propeller: 4 bladed Pitchpropeller 1100mm/bronze (Hundested, Denmark) Second Power Source: Generator on main engine 24 Volts: Mastervolt 130 Amp Landpower: 400/230VAC Transformers: 2x10kw. 400VAC to 230 volts (2004) Batteries: 2pcs Radio consumer batteries: 2 pcs Silent Ship batteries: 6 x 220 VDC batteries **ANCHOR:** Manuel pump 1 x 560kg 1 x 420kg 18mm galvanized **NAVIGATION & COMMUNICATION:** Furuno Nav Net VX2 Integrated Radar, ECDIS, AIS and sonar. Furuno GPS/WAAS GP-32 Magnetic compass - Weilbach Electronic gyro compass AIS - Furuno FA-150 MF/HF sailor HC4500B Navtex Inmarsat C Thrane & Thrane TT3020 C 1 Sailor RT 4833 VHF-DSC 1 Sailor RT 2048 VHF **INTERIOR ACCOMODATION:**

3 cabins with 3 berths in each. Each berth is 2m.

3 x WC and shower units on lower deck

4 crew cabins with 2+2+1+1 berths. One can be used for guests. 1 captains cabin aft with 1½ berth + 1 head

Large saloon leading into an open galley with a gas cooker, winefridge, fridge, dishwasher. Saloon features a heatpump and an electric fire. All rooms has electric heating.

CREW: Safety crew: 3 (sailing w/o passengers) (Danish Maritime Association) Daytime crew: 3-4 (Captain, navigator, deckhand, steward/cook) Duration sailing: 5 (overnight 14 hours) Daytime crew +1 for watchkeeping **SAFETY:** 3 x 25 person Viking safety boats Wireless alarm Fire safety system: Energen - big capacity 8 portable extinguishers Firehoses **Misc. information:** Teakdeck from 2004 Bow and 120m+ wood replaced since 2008 3 new masts in 2012 15 new sails 2011 One WC/Bath from 2011 Washing machine installed 2011 Antifouling: Hempel Bravo 76100 Red (12th July 2015)

Basic Information

Category: Schooner

Sub Category: Tallship

Model Year: 1942

Year Built: 1942

Refit Year: 2011

Refit Type: Full

Country: Denmark

Registration #: OWID2

Dimensions

LOA: 132' 7" (40.40m)

LOD: 96' 5" (29.37m)

Beam: 23' 1" (7.03m)

Min Draft: 7' 7" (2.30m)

Max Draft: 10' 3" (3.10m)

Speed, Capacities and Weight

Cruise Speed: 6 Kts. (7 MPH)

Max Speed: 11 Kts. (13 MPH)

Max Speed RPM: 1900 Kts.

Displacement: 68343.30122 Pounds

Gross Tonnage: 104 Pounds

Accommodations

Total Cabins: 3

Total Berths: 9

Sleeps: 9

Total Heads: 4

Captain Cabin: True

Crew Cabin: 2

Crew Berths: 5

Crew Sleeps: 5

Crew Heads: 2

Hull and Deck Information

Hull Material: Oak

Deck Material: Teak

Hull Color: Black

Engine Information

Engines: 1

Manufacturer: Detroit Diesel

Model: V8 N71 (10,4 ltr)

Engine Type: Inboard

Fuel Type: Diesel

DETAILED INFORMATION

General

This beautiful three masted topsail schooner was built in 1942 at the renowned J. Ring Andersen's Shipyard in Svendborg, Denmark. She was built as a cargo ship from a design based on drawings from the end of the 19th century. In 1974 she was bought by a privately owned shipping company in Denmark, whom changed the cargo ship into a pleasure craft. In 1996 she was acquired by Carlsberg A/S, the very company she had transported most of their beerpackaging for back in the days as a cargo ship. She was refurbished and new main engine was installed. In their ownership from 1996 to 2010 she was used for representation, teambuilding and meetings as well as attending Tallship races.

From 2010 until today she has been in the hands of the widow from the shipping company owner and subsequently fully refurbished incl. engine overhaul and new masts. (Under Tall-Ship expert supervision)

All restoration and yearly service has been carried out by the building shipyard J. Ring Andersen.

Today ZAR stands out as one of the finest classic schooners available in Northern Europe and the only one certified by Det Norske Veritas (today DNV GL A/S).

In 1996 she was declared as a Traditional Ship and all service and maintenance has been done according to tradition as required.

Details

Constructed in 1942 as one in 4-5 sisterships

Passengers: 9/46 - 9 sleeping, 46 cruising

Air Draught: 24,2 m

LOA 40,4m (incl. bowsprit)

Length btw. perpendiculars 25,51 m

Registered length: 26,43m

Side Height 4,3m

Sail Area: 375 m² (ca. 4000 sq. ft)

GRT 95,14 (using 1947 Tonnage Convention)

GRT 104 (using 1969 Tonnage Convention)

Net Tonnage 31t

Displacement Max approx. 203,3t

Lightweight 167t

Speed

Cruise/Sail: 5-6 knots

Cruise/motor: 6-8,5 knots

Max reported/sail: 10,4 knots

Mechanical

Main: Detroit V8 N71, 10,4ltr, 250BHP (@1900RPM) - replaced 1996/overhauled 2010

Auxiliary: John Deere 4045 DFM 70

Generator: 400 VAC Kohler 33EFUZD 33KW (from 2009)

ZF Marine Gear from 2011.

Propeller: 4 bladed Pitchpropeller 1100mm/bronze (Hundested, Denmark)

Second Power Source:

Generator on main engine 24 Volts: Mastervolt 130 Amp

Landpower: 400/230VAC

Transformers: 2x10kw. 400VAC to 230 volts (2004)

Batteries: 2pcs

Radio consumer batteries: 2 pcs

Silent Ship batteries: 6 x 220 VDC batteries

Electronics

Furuno Nav Net VX2 Integrated Radar, ECDIS, AIS and sonar.

Furuno GPS/WAAS GP-32

Magnetic compass - Weilbach

Electronic gyro compass

AIS - Furuno FA-150

MF/HF sailor HC4500B

Navtex

Inmarsat C Thrane & Thrane TT3020 C

1 Sailor RT 4833 VHF-DSC

1 Sailor RT 2048 VHF

Accommodations

3 cabins with 3 berths in each. Each berth is 2m.

3 x WC and shower units on lower deck

4 crew cabins with 2+2+1+1 berths.

1 captains cabin aft with 1½ berth + 1 head

Large saloon leading into an open galley with a gas cooker, wine-refrigerator, refrigerator, dishwasher.

Saloon features a heatpump and an electric fire.

All rooms has electric heating.

Crew

Safety crew: 3 (sailing w/o passengers) (Danish Maritime Association)

Daytime crew: 3-4 (Captain, navigator, deckhand, steward/cook)

Duration sailing: 5 (overnight 14 hours) Daytime crew +1 for watchkeeping

Safety & Fire Protection

3 x 25 person Viking safety boats

Wireless alarm

Fire safety system:

Energen - big capacity

8 portable extinguishers

Firehoses

Miscellaneous

Teakdeck from 2004

Bow and 120m+ wood replaced since 2008

3 new masts in 2012

15 new sails 2011

One WC/Bath from 2011

Washing machine installed 2011

Antifouling: Hempel Bravo 76100 Red (12th July 2015)

Exclusions

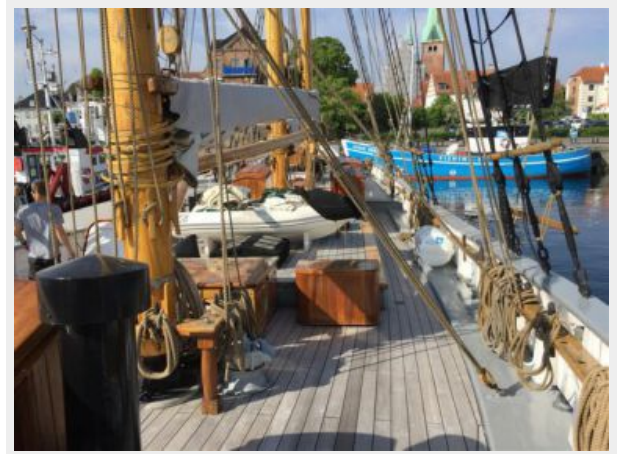
Owner's personal belongings.

Disclaimer

The Company offers the details of this vessel or yacht in good faith but cannot guarantee or warrant the accuracy of this information nor warrant the condition of the vessel. A buyer should instruct his representatives, agents, or his surveyors, to investigate such details as the buyer desires validated. This vessel or yacht is offered subject to prior sale, price change, or withdrawal without notice.

PHOTOS



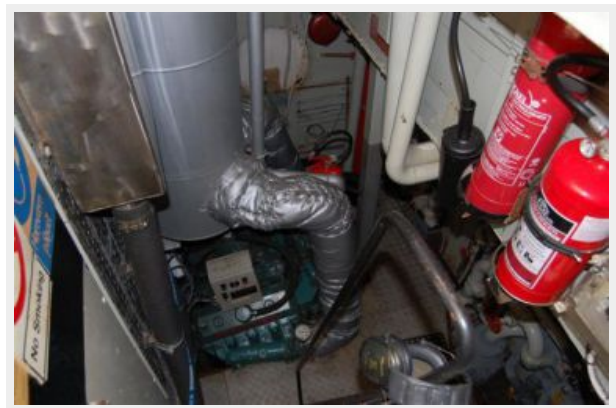


Winter prepared





Engine room





Galley



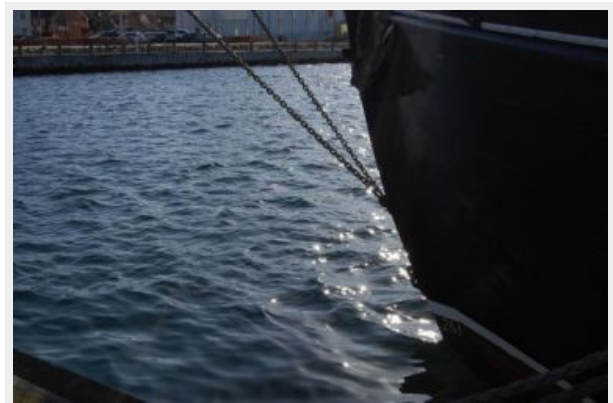
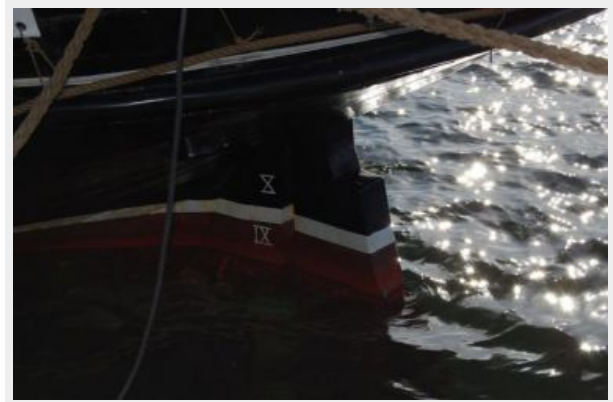
Dining Area

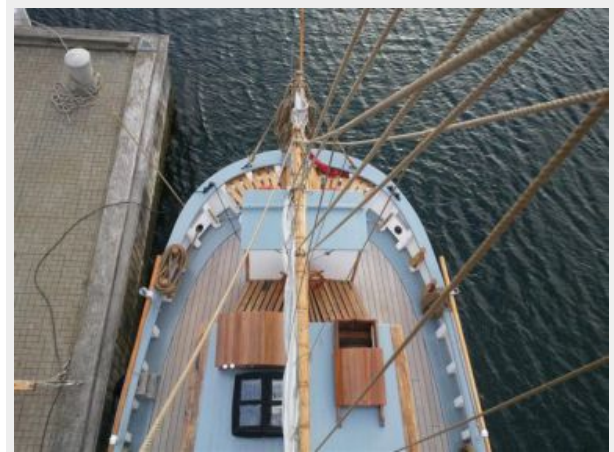
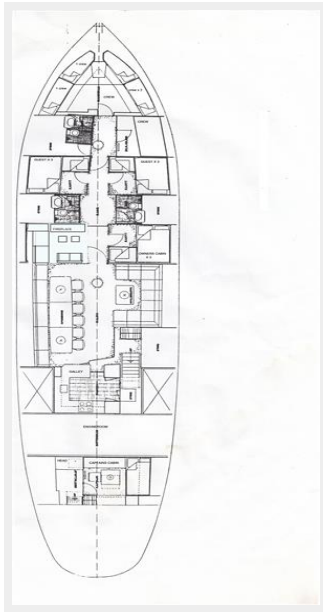


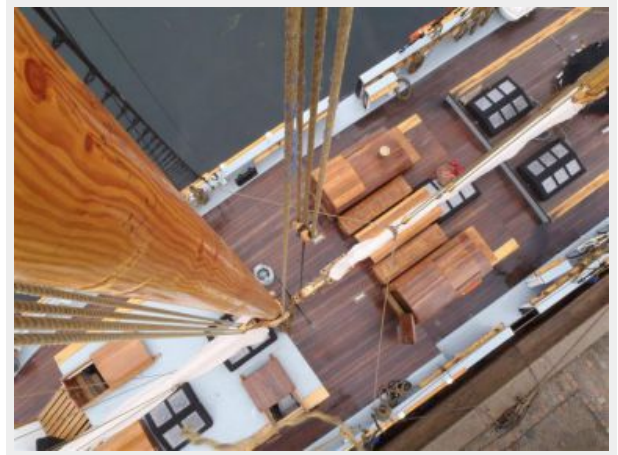
Electric fire



Captains Cabin







CONTACTS

Andrey Shestakov, leading yacht broker of the sales department of Shestakov Yacht Sales Inc. Shestakov Yacht Sales Inc., the official representative of the Miami/Fort Lauderdale FL headquarters.

Contact details

Email: andrey@shestakovyachtsales.com

Web: shestakovyachtsales.com/en/

Telephones

USA: +1(954)274-4435

Office hours

Monday – Saturday: **9:00 - 21:00** EDT

Sunday: **closed**

Address



Harbour Towne Marina, 850 NE 3rd St,
STE 213, Dania, FL 33004