

ZAR — CUSTOM BUILT



Судостроитель: CUSTOM BUILT

Год постройки: 1942

Модель: Шхуна

Цена: **ЦЕНА ЯХТЫ ПО ЗАПРОСУ**

Местонахождение: Denmark

Длина общая: 132' 7" (40.40m)

Ширина: 23' 1" (7.03m)

Мин. осадка: 7' 7" (2.30m)

Макс. осадка: 10' 3" (3.10m)

Крейс. скорость: 6 Kts. (7 MPH)

Макс. скорость: 11 Kts. (13 MPH)

Купить **ZAR — CUSTOM BUILT** а также выбрать подходящую вам яхту из нашего каталога яхт вам поможет опытный яхтенный брокер Андрей Шестаков. На сегодняшний день компания **Shestakov Yacht Sales Inc.** имеет большое количество яхт в собственном списке продаж, а также тесно сотрудничает со всеми крупными яхтенными производителями по всему миру.

Для того чтобы купить яхту **ZAR — CUSTOM BUILT** а также проконсультироваться по любому вопросу связанному с покупкой, продажей, чартером яхт позвоните по телефону **+7(918)465-66-44**.

ОГЛАВЛЕНИЕ

ОГЛАВЛЕНИЕ	2
ХАРАКТЕРИСТИКИ	4
Обзор	4
Основная информация	5
Размеры	5
Скорость, вместимость и масса	6
Размещение	6
Корпус и палуба	6
Информация о двигателе	6
ПОДРОБНОЕ ОПИСАНИЕ	7
General	7
Details	7
Speed	8
Mechanical	8
Electronics	8
Accommodations	9
Crew	9
Safety & Fire Protection	9
Miscellaneous	10
Исключения	10
Отказ от ответственности	10
ФОТОГРАФИИ	11
Winter prepared	12
Engineroom	13
Galley	14
Dining Area	15
Electric fire	15
Captains Cabin	15

КОНТАКТЫ	18
Контактная информация	18
Телефоны	18
Время работы	18
Адрес	18

ХАРАКТЕРИСТИКИ

Обзор

June/2019: Upgraded to charter on navigational equipment and safety.

This beautiful three masted topsail schooner was built in 1942 at the renowned J. Ring Andersen's Shipyard in Svendborg, Denmark. She was built as a cargo ship from a design based on drawings from the end of the 19th century. In 1974 she was bought by a privately owned shipping company in Denmark, whom changed the cargo ship into a pleasure craft. In 1996 she was acquired by Carlsberg A/S, the very company she had transported most of their beerpackaging for back in the days as a cargo ship. She was refurbished and new main engine was installed. In their ownership from 1996 to 2010 she was used for representation, teambuilding and meetings as well as attending Tallship races.

From 2010 until today she has been in the hands of the widow from the shipping company owner and subsequently fully refurbished incl. engine overhaul and new masts. (Under Tall-Ship expert supervision)

All restoration and yearly service has been carried out by the building shipyard J. Ring Andersen.

Today ZAR stands out as one of the finest classic schooners available in Northern Europe and the only one certified by Det Norske Veritas (today DNV GL A/S).

All service and maintenance has been done according to Traditional Tallship tradition.

DETAILS:

Constructed in 1942 as one in 4-5 sisterships Passengers: 9/46 - 9 sleeping, 46 cruising Air Draught: 24,2 m LOA 40,4m (incl. bowsprit) Length btw. perpendiculars 25,51m Registered length: 26,43m Side Height 4,3m Sail Area: 375 m² (ca. 4000 sq. ft) GRT 95,14 (using 1947 Tonnage Convention) GRT 104 (using 1969 Tonnage Convention) Net Tonnage 31t Displacement Max approx. 203,3t Lightweight 167t **SPEED:** Cruise/Sail: 5-6 knots Cruise/motor: 6-8,5 knots Max reported/sail: 10,4 knots **ENGINES:** Main: Detroit V8 N71, 10,4ltr, 250BHP (@1900RPM) - replaced 1996/overhauled 2010 Auxiliary: John Deere 4045 DFM 70 Generator: 400 VAC Kohler 33EFUZD 33KW (from 2009) ZF Marine Gear from 2011. Propeller: 4 bladed Pitchpropeller 1100mm/bronze (Hundested, Denmark) Second Power Source: Generator on main engine 24 Volts: Mastervolt 130 Amp Landpower: 400/230VAC Transformers: 2x10kw. 400VAC to 230 volts (2004) Batteries: 2pcs Radio consumer batteries: 2 pcs Silent Ship batteries: 6 x 220 VDC batteries **ANCHOR:** Manuel pump 1 x 560kg 1 x 420kg 18mm galvanized **NAVIGATION & COMMUNICATION:** Furuno Nav Net VX2 Integrated Radar, ECDIS, AIS and sonar. Furuno GPS/WAAS GP-32 Magnetic compass - Weilbach Electronic gyro compass AIS - Furuno FA-150 MF/HF sailor HC4500B Navtex Inmarsat C Thrane & Thrane TT3020 C 1 Sailor RT 4833 VHF-DSC 1 Sailor RT 2048 VHF **INTERIOR ACCOMODATION:**

3 cabins with 3 berths in each. Each berth is 2m.

3 x WC and shower units on lower deck

4 crew cabins with 2+2+1+1 berths. One can be used for guests. 1 captains cabin aft with 1½ berth + 1 head

Large saloon leading into an open galley with a gas cooker, winefridge, fridge, dishwasher. Saloon features a heatpump and an electric fire. All rooms has electric heating.

CREW: Safety crew: 3 (sailing w/o passengers) (Danish Maritime Association) Daytime crew: 3-4 (Captain, navigator, deckhand, steward/cook) Duration sailing: 5 (overnight 14 hours) Daytime crew +1 for watchkeeping **SAFETY:** 3 x 25 person Viking safety boats Wireless alarm Fire safety system: Energen - big capacity 8 portable extinguishers Firehoses **Misc. information:** Teakdeck from 2004 Bow and 120m+ wood replaced since 2008 3 new masts in 2012 15 new sails 2011 One WC/Bath from 2011 Washing machine installed 2011 Antifouling: Hempel Bravo 76100 Red (12th July 2015)

Основная информация

Тип судна: Шхуна	Подкатегория: Большое парусное судно
Модельный год: 1942	Год постройки: 1942
Год обновления: 2011	Вид обновления: Full
Страна: Denmark	Регистрационный номер: OWID2

Размеры

Длина общая: 132' 7" (40.40m)	Длина палубы: 96' 5" (29.37m)
Ширина: 23' 1" (7.03m)	Мин. осадка: 7' 7" (2.30m)
Макс. осадка: 10' 3" (3.10m)	

Скорость, вместимость и масса

Крейс. скорость: 6 Kts. (7 MPH)

Макс. скорость: 11 Kts. (13 MPH)

Макс. скорость поворота: 1900 Kts.

Водоизмещение: 68343.30122 Pounds

Чистый вес: 104 Pounds

Размещение

Всего кают: 3

Всего коек: 9

Спальные места: 9

Всего ком. состава: 4

Каюта капитана: Да

Каюты экипажа: 2

Койки экипажа: 5

Спальных мест экипажа: 5

Комм. состав экипажа: 2

Корпус и палуба

Материал корпуса: Oak

Материал палубы: Teak

Цвет корпуса: Black

Информация о двигателе

Двигатели: 1

Производитель: Detroit Diesel

Модель: V8 N71 (10,4 ltr)

Тип двигателя: Inboard

Тип топлива: Diesel

ПОДРОБНОЕ ОПИСАНИЕ

General

This beautiful three masted topsail schooner was built in 1942 at the renowned J. Ring Andersen's Shipyard in Svendborg, Denmark. She was built as a cargo ship from a design based on drawings from the end of the 19th century. In 1974 she was bought by a privately owned shipping company in Denmark, whom changed the cargo ship into a pleasure craft. In 1996 she was acquired by Carlsberg A/S, the very company she had transported most of their beerpackaging for back in the days as a cargo ship. She was refurbished and new main engine was installed. In their ownership from 1996 to 2010 she was used for representation, teambuilding and meetings as well as attending Tallship races.

From 2010 until today she has been in the hands of the widow from the shipping company owner and subsequently fully refurbished incl. engine overhaul and new masts. (Under Tall-Ship expert supervision)

All restoration and yearly service has been carried out by the building shipyard J. Ring Andersen.

Today ZAR stands out as one of the finest classic schooners available in Northern Europe and the only one certified by Det Norske Veritas (today DNV GL A/S).

In 1996 she was declared as a Traditional Ship and all service and maintenance has been done according to tradition as required.

Details

Constructed in 1942 as one in 4-5 sisterships

Passengers: 9/46 - 9 sleeping, 46 cruising

Air Draught: 24,2 m

LOA 40,4m (incl. bowsprit)

Length btw. perpendiculars 25,51 m

Registered length: 26,43m

Side Height 4,3m

Sail Area: 375 m² (ca. 4000 sq. ft)

GRT 95,14 (using 1947 Tonnage Convention)

GRT 104 (using 1969 Tonnage Convention)

Net Tonnage 31t

Displacement Max approx. 203,3t

Lightweight 167t

Speed

Cruise/Sail: 5-6 knots

Cruise/motor: 6-8,5 knots

Max reported/sail: 10,4 knots

Mechanical

Main: Detroit V8 N71, 10,4ltr, 250BHP (@1900RPM) - replaced 1996/overhauled 2010

Auxiliary: John Deere 4045 DFM 70

Generator: 400 VAC Kohler 33EFUZD 33KW (from 2009)

ZF Marine Gear from 2011.

Propeller: 4 bladed Pitchpropeller 1100mm/bronze (Hundested, Denmark)

Second Power Source:

Generator on main engine 24 Volts: Mastervolt 130 Amp

Landpower: 400/230VAC

Transformers: 2x10kw. 400VAC to 230 volts (2004)

Batteries: 2pcs

Radio consumer batteries: 2 pcs

Silent Ship batteries: 6 x 220 VDC batteries

Electronics

Furuno Nav Net VX2 Integrated Radar, ECDIS, AIS and sonar.

Furuno GPS/WAAS GP-32

Magnetic compass - Weilbach

Electronic gyro compass

AIS - Furuno FA-150

MF/HF sailor HC4500B

Navtex

Inmarsat C Thrane & Thrane TT3020 C

1 Sailor RT 4833 VHF-DSC

1 Sailor RT 2048 VHF

Accommodations

3 cabins with 3 berths in each. Each berth is 2m.

3 x WC and shower units on lower deck

4 crew cabins with 2+2+1+1 berths.

1 captains cabin aft with 1½ berth + 1 head

Large saloon leading into an open galley with a gas cooker, wine-refrigerator, refrigerator, dishwasher.

Saloon features a heatpump and an electric fire.

All rooms has electric heating.

Crew

Safety crew: 3 (sailing w/o passengers) (Danish Maritime Association)

Daytime crew: 3-4 (Captain, navigator, deckhand, steward/cook)

Duration sailing: 5 (overnight 14 hours) Daytime crew +1 for watchkeeping

Safety & Fire Protection

3 x 25 person Viking safety boats

Wireless alarm

Fire safety system:

Energen - big capacity

8 portable extinguishers

Firehoses

Miscellaneous

Teakdeck from 2004

Bow and 120m+ wood replaced since 2008

3 new masts in 2012

15 new sails 2011

One WC/Bath from 2011

Washing machine installed 2011

Antifouling: Hempel Bravo 76100 Red (12th July 2015)

Исключения

При продаже яхты исключаются личные вещи владельца.

Отказ от ответственности

Компания предоставляет описание судна или яхты добросовестно, но не может гарантировать точность этой информации, а также не ручается за техническое состояние. Покупатель должен проинструктировать своих агентов или оценщиков исследовать представленную информацию более подробно, по собственному желанию. Продажа судна или яхты, изменение цены или снятие с продажи будет происходить без предварительного уведомления.

ФОТОГРАФИИ



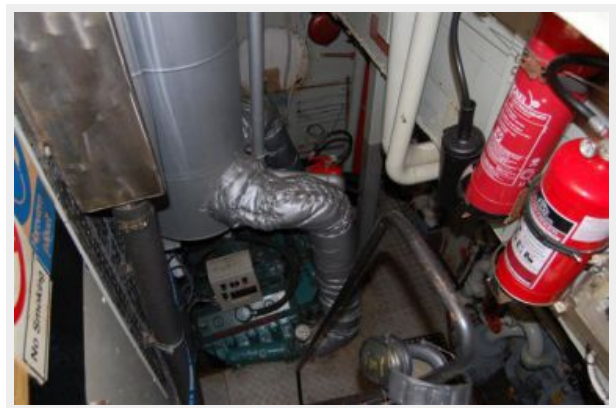


Winter prepared





Engine room





Galley



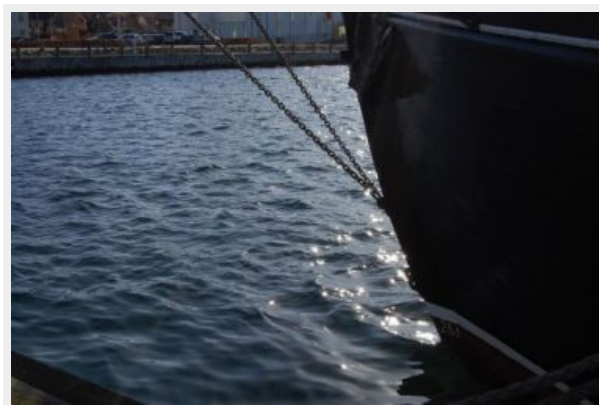
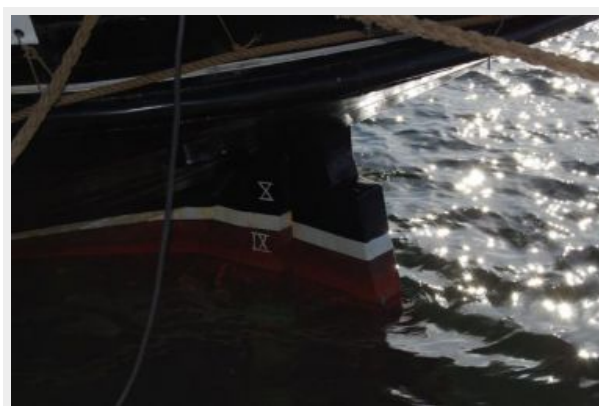
Dining Area

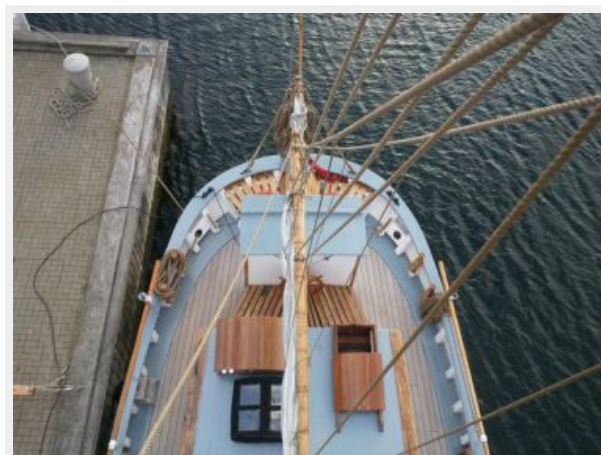
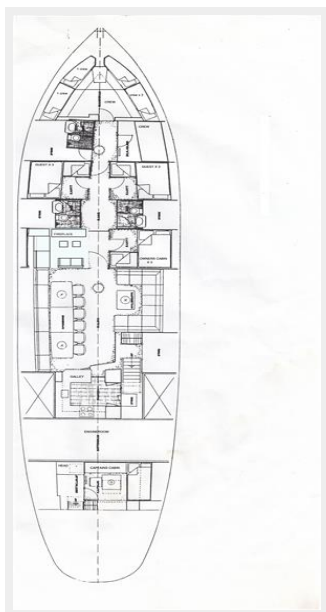


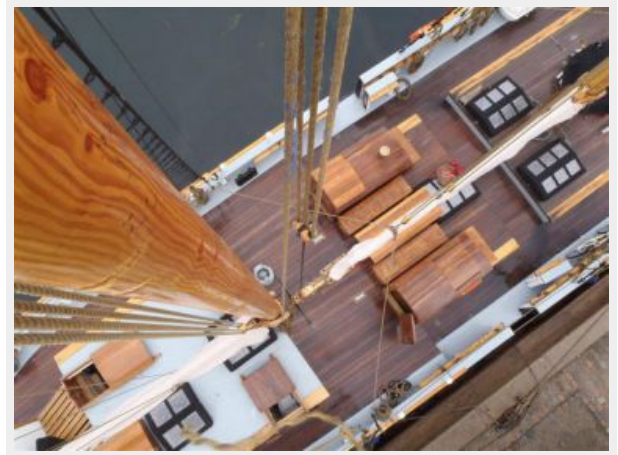
Electric fire



Captains Cabin







КОНТАКТЫ

Андрей Шестаков (Andrey Shestakov) – ведущий яхтенный брокер отдела продаж яхт и судов компании Shestakov Yacht Sales Inc. Официальный представитель Shestakov Yacht Sales Inc. для русскоговорящих клиентов в центральном офисе компании в Майами/Форт Лодердейл/Флорида/США.

Контактная информация

Email: andrey@shestakovyachtsales.com

Web: shestakovyachtsales.com

Телефоны

Краснодарский край: **+7(918)465-66-44**

США, Майами, Флорида: **+1(954)274-4435**

Время работы

Понедельник – Суббота: **9:00 - 21:00**
EDT

Воскресенье: **Закрито**

Адрес



Harbour Towne Marina, 850 NE 3rd St,
STE 213, Dania, FL 33004