

MY GIRL — FAIRLINE



Builder: FAIRLINE

Year Built: 2013

Model: Cruiser

Price: PRICE ON APPLICATION

Location: United States

LOA: 62' 0" (18.90m)

Beam: 16' 6" (5.03m)

Max Draft: 4' 6" (1.37m)

Cruise Speed: 27 Kts. (31 MPH)

Our experienced yacht broker, Andrey Shestakov, will help you choose and buy a yacht that best suits your needs **My Girl — FAIRLINE** from our catalogue. Presently, at Shestakov Yacht Sales Inc., we have a wide variety of yachts available on our sale's list. We also work in close contact with all the big yacht manufacturers from all over the world.

If you would like to buy a yacht **My Girl — FAIRLINE** or would like help answering any questions concerning purchasing, selling or chartering a yacht, please call **+1(954)274-4435**

TABLE OF CONTENTS

TABLE OF CONTENTS	2
SPECIFICATIONS	4
Overview	4
Basic Information	4
Dimensions	4
Speed, Capacities and Weight	5
Accommodations	5
Hull and Deck Information	5
Engine Information	5
DETAILED INFORMATION	6
Manufacturer Provided Description	6
Galley	6
Lobby	7
Deck	7
Accommodations	7
Garage	9
Helm Position	10
Electrical systems	10
Deck Saloon	11
Cockpit	11
Tankage	12
Fixed Fire Suppression System	12
Ground Tackle	12
Additional Equipment and Accessories	13
U.S.A. specifications in addition to or in lieu of those listed above	14
Engine Notes	14
Exclusions	14
Disclaimer	15

PHOTOS	16
CONTACTS	25
Contact details	25
Telephones	25
Office hours	25
Address	25

SPECIFICATIONS

Overview

May 2018 Yard Period:

- Fresh bottom job
- 10 New Underwater lights 4 across stern and 3 down each side.
- New aft deck ice maker
- New blue deck lights
- Full Detail, compound and wax
- New LED step lights

1000hr Volvo Service Completed.

Turn Key boat and loaded with options.

The Fairline Targa 62GT is a sleek and sexy cruiser with plenty of attention to design detail. Lady Crystal is the most well equipped yacht available in her class. The entire look and feel of the Targa 62 is sophisticated and cool, from her low-profile lines to the understated interior décor. Bow and thruster, yacht controller, tender, sun roof, huge master stateroom and many more great features. **TRADES CONSIDERED**

Basic Information

Category: Cruiser

Model Year: 2013

Year Built: 2013

Country: United States

Dimensions

LOA: 62' 0" (18.90m)

Beam: 16' 6" (5.03m)

Max Draft: 4' 6" (1.37m)

Clearance: 17' 3" (5.26m)

Speed, Capacities and Weight

Cruise Speed: 27 Kts. (31 MPH)

Displacement: 49200 Pounds

Water Capacity: 145 Gallons

Fuel Capacity: 676 Gallons

Accommodations

Total Cabins: 3

Total Heads: 2

Hull and Deck Information

Hull Material: Fiberglass

Hull Configuration: Deep Vee

Engine Information

Engines: 2

Manufacturer: Volvo

Model: D13

Engine Type: Inboard

Fuel Type: Diesel

DETAILED INFORMATION

Manufacturer Provided Description

At first glance, there's no doubting that this is a powerful sports cruiser with striking good looks. But the real attraction lies in its large, open cockpit that features a J-shaped seating and dining area sitting ahead of a luxuriously large sunpad.

And if a refreshing dip in the water is called for, you can enjoy all the benefits of a large bathing platform that features a hydraulic hi-lo system - a first for the Targa range.

Galley

The 62's galley is forward of the saloon, down two steps, and to port. It's placement on a midlevel deck, as well as the glass bulkheads that bracket it, are another product of Fairline's ask-and-ye-shall-receive tour of the Med. This galley spans the gap. A culinarily gifted owner or guest-chef extraordinaire can fire up some chicken cordon bleu without missing a beat of the party happening in the saloon. However if a professional chef is hired, it's also out of the way enough for him to keep his head down and chop celery without being underfoot. The placement of the galley on its own level also allows it to have a full-height fridge and freezer, always a plus for anybody looking to do some adventurous cruising—or cooking.

- Combination oven/microwave/grill
- Crockery stowage
- Electric induction hob
- Extractor fan
- FAIRLINE EDITION china dinner service and cutlery set
- First aid kit
- Integrated waste bin
- Overhead lighting
- Isotherm Refrigerator/Freezer Combo
- Isotherm Ice maker
- Fresh water system: Pressurized on demand hot and cold water utilizing a "Shurflo" system with accumulator tank.
- Sink with hot and cold mixer tap
- Stowage cupboards and drawers
- Work surface lights

Lobby

- Access to electrical system
- Access to master cabin, two guest cabins and day head
- Handrail
- Large storage area under lift-up stairs
- Lighting to stair kick-plates
- Overhead lighting
- Space for optional domestic appliances x2

Deck

- Anchor chain locker
- Anchor winch (electric)
- Anchor winch controls
- Bathing platform ladder
- Calibrated anchor chain
- Deck wash outlets
- Ensign and staff
- External covers to windscreen
- Fender set
- Foredeck lockers
- Full set of IMCO navigation lights
- Hot and cold water transom shower
- Moulded non-slip deck surface
- Recessed self-draining area on foredeck for coachroof sun cushions
- Remote control searchlight
- 'Reticulated' non-absorbent foam cushions for forward sundeck
- Riding light
- Self-stowing through-hull Delta® anchor
- Split windscreen
- Stainless steel aft fairlead(s)
- Stainless steel bow, spring and stern cleats
- Stainless steel bow fairlead(s)
- Stainless steel handrails
- Stainless steel pulpit
- Teak laid bathing platform
- Twin horns
- Water filler(s)
- Windscreen washers

Accommodations

Master Stateroom

- Aluminum venetian blinds
- Chaise longue
- Dressing table with drawers
- Feature windows with opening portholes
- Full-height standing headroom
- Full set of Heirlooms fine bed linen (includes pillows and duvet)
- Overhead lockers
- Oversized double bed
- Reading lights
- Storage locker under floor
- Twin bedside tables
- Two wardrobes with mirrored doors
- Under bed storage area with 2 large drawers
- 32" TV with Fusion RA200 marine stereo and Apple dock

Master En Suite

- 220V/240V shaving point
- Aluminum venetian blinds
- Automatic shower tray pump-out system
- Electric silent-flush freshwater toilet
- En suite door with feature glass
- Extractor fan
- Full set of bathroom fittings
- Mirror
- Overhead lighting
- Oversized shower in forward location with twin seats, hinged acrylic door and solid timber gratings
- Oak floor
- Stowage cupboard(s)
- Towel rail
- Towel set
- Twin 'Gullwing' opening skylights
- Vanity unit locker and basin with hot and cold pressurised water

Port Guest Cabin

- Aluminum venetian blinds
- Bedside table with stowage
- Full length berths x2 with conversion to double bed
- Full set of Heirlooms fine bed linen (includes pillows and duvet)
- Overhead lighting
- Reading lights

- Two feature windows with opening porthole
- Wardrobe with mirrored doors

Starboard Guest Cabin

- Aluminum venetian blinds
- Bedside table with stowage
- Full length berths x2
- Full set of Heirlooms fine bed linen (includes pillows and duvet)
- Overhead lighting
- Reading lights
- Two feature windows with opening porthole
- Under bed storage
- Wardrobe with mirrored doors

Guest Cabin En Suite

- 220V/240V shaving point
- Aluminum venetian blinds
- Automatic shower tray pump-out system
- Day Access
- Electric silent-flush freshwater toilet
- Extractor fan
- Full set of bathroom fittings
- Full standing height shower with solid timber gratings and hinged glass door
- Overhead lockers
- Mirror
- Opening porthole
- Overhead ceiling lights
- Oak floor
- Skylights
- Towel rail
- Vanity unit locker and basin with hot and cold pressurised water

Garage

- Tender
- Large sun pad to garage roof
- Electric winch with remote control
- Hydraulically powered access door
- Dingy launch mechanism
- Fire extinguisher system
- Light

Helm Position

- 12V socket
- Adjustable/tilt steering wheel
- Adjustable air vents
- Bilge pump switches with integral operating warning lights and audible alarms
- Bow thruster controls
- Chart stowage
- Chart table and light
- Companion seating to helm
- Controls for engine bay fire extinguisher system
- Drinks holders
- Electronic single-lever throttle and gear controls for port and starboard engines
- Fuel gauges
- Full engine instrumentation including; tachometers, temperature gauges, audible alarms and engine hour meters
- Garmin autopilot system with colour display
- Garmin digital multi-function instrument system with colour display
- Garmin GPS map (12") Display
- Garmin VHF marine radio
- Helm position indicator
- High speed magnetic compass
- Powered steering
- Red night-light illumination to helm
- Remote anchor winch controls
- Searchlight controls
- Switches for navigation and riding lights, windscreen wipers and engine bay extractor fans
- Trim tab controls
- Twin bench seat to helm

Electrical systems

- 230 - 240V 50Hz
- All 240V, 24V and 12V circuits (where applicable) protected by circuit breakers with main electrical load control panel
- Emergency VHF radio - 12V power supply
- Heavy duty circuit breakers
- Isolating switches to all batteries
- Onan generator 9.5kW

12 Volt

- Voltage dropper from domestic batteries

24 Volt

- Batteries - 2 x heavy duty batteries exclusively for port engine starting
- Batteries - 2 x heavy duty batteries exclusively for starboard engine starting
- Batteries - 4 x heavy duty batteries wired in parallel supplying domestic services and port engine starting
- Circuit breaker 100amp for anchor winch
- Emergency battery coupling system permits each engine to start from opposite battery bank
- Regulated charger

240 Volt

- Isolation transformer(s)
- Polarity check and earth leakage protection system
- Power points throughout the boat (fed from shore power or generator)
- Shore power supply
- Spare circuit breakers for optional equipment

Deck Saloon

- Sideboard to Port with 32" TV with Apple dock
- Harman Kardon AV system with DVD player
- Dining table with lift mechanism to convert to coffee table
- Hardtop skylight and overhead lighting
- Pneumatically sealed retractable powered hard top
- Oak floor
- Three panel patio door to cockpit with pleated blinds
- Sofa with stowage
- Manual sliding windows

Cockpit

Forward of the sunpad, the cockpit is appointed with everything you'd want for a cruising boat like this. There's U-shaped seating around a table that's just begging to be set with a plate of oysters and a nicely chilled Moscato. And to port there's a barbecue, sink, ice maker, and refrigerator, all of which are options. Overhead, there's one of those design details I mentioned; an electrically actuated sunshade that can jut out over the whole area. That may seem fairly commonplace, but the real trick here is that this one can be deployed while at speed. Many times cockpit sunshades aren't built sturdily enough to take on the bouncing waves, but this one most certainly is.

- 12V heavy duty weatherproof socket
- Access to side deck

- Aft cockpit hood with clear panels and zipped doorway
- Bathing platform lights
- Boat hook
- Engine bay access hatch with stainless steel gas struts
- Teak cockpit table
- Life raft stowage
- Manual bilge pumps
- Mooring warps
- Overhead lighting
- Stowage locker
- Teak laid floor throughout self-draining cockpit
- Single transom gate
- Cockpit bar pack including refrigerator, griddle, and ice maker

Tankage

- Changeover valve system to permit each engine to draw fuel from, and return fuel to, either tank
- Emergency fuel shut-off valves accessible via cable-operated remote control
- High capacity water separators and fuel filters
- Individual fillers and vents to port and starboard
- x2 fuel tanks, 1,279L each

Freshwater System

- Automatic, pressurised supply
- Calorifier hot water system
- Water tank(s)

Fixed Fire Suppression System

- FIREBOY HALON MFC-227

Ground Tackle

- Anchor Windlass" Lewmar with Remote
- Anchor Davit: Single Roller Chock Fitted to Pulpit
- Anchor: Delta Plow
- Anchor Chain/Rode: 150' High Tensile Chain

Additional Equipment and Accessories

- Stainless Steel Safety Grab Rails Throughout
- "Side-Power" 24-Volt Bow and Stern Thruster
- Electro-Hydraulic Full length Teak/Fiberglass Swim Platform
- "Benzonzoni" Electro-Hydraulic Passarelle
- Electrically Retractable Aft Deck Sun Shade
- Fresh Water Wash Down
- Three Step Stainless Steel Transom Ladder
- Hanging Lockers
- Engine Room Lights
- Cabin Courtesy LED Lights
- Cockpit LED Lights
- "Yacht Controller" Electronic Navigation Control System
- (2) Powered Adjustable Leather Helm Seating
- Chart Station
- Engine Compartment Wash Down
- KVH HD7 Satellite Television System with Direct TV
- 32" Samsung Flat Screen TV
- 40" Samsung Flat Screen TV
- (2) 21" Phillips Flat Screen TV
- (2) Fusion DVD/Stereo Receivers
- Harmon Kardon Surround Sound Stereo System
- Roque WiFi Booster System
- Electrically Operated Port and Starboard Main Salon Port Lights/Windows
- Gen-Set Sound Shielding
- Powder Coated Sea-View Antenna Mast
- Meile Touch-tronic Washer and Dryer
- Teak Cockpit Sole
- Chain Plate
- Engine Room Blowers
- Transom Shower
- Low Speed Trolling Valves
- Fresh Water Tank Level Indicator
- Galley Vent Fan
- Sharp Microwave Oven
- Powered Head Vent
- Fisher & Paykel Dishwasher Drawer
- Electronic Rudder Indicator
- Vessel Wired for TV and Telephone
- Cockpit Wet Bar
- Electro-Hydraulic Operated Dingy Garage with Electric Winch
- (2) 50 AMP Glendenning Cable Master
- Zantrex 1800 Watt Sine Wave Inverter

- Horizon Reverse Osmosis System
- Fresh Water Carbon Filter System
- Recessed Anchor Locker
- Recessed Anchor
- Foredeck Sun Cushions
- Emergency Starting System
- Extensive Spare Parts Inventory on Board
- New Aft Sun Cushions
- Custom Powered Sun Blinds
- Spare
- HRO Water Maker System
- New Aft Settee Cushions
- Triple Smoked Slider Salon Doors
- Aft Deck Seating Covers
- (3) Sets Windshield Covers
- CDA Electric Grill with Lid and Safety
- (4) Lumishore Elite LED Under Water Lights
- 2013 11' Aquascan Inflatable Model F-11 Jet-Sprinter Hard Bottom Yacht Tender 110H.P.
- Yamaha Four Stroke Jet Pump with 14.7 Hours

U.S.A. specifications in addition to or in lieu of those listed above

Voltage - 2 x 110V (220V) 60Hz

Engine Notes

- 2 x Volvo Penta D13-900 EVC Shaft Diesel 900mhp each

The boat's engine room is as well laid out as you might expect from a company that puts so much thought into the details. Volvo D13-900s fit easily into the space, and left enough room to effortlessly access both the twin fuel filters on the forward bulkhead, and the 22.5-kilowatt Onan generator aft. A large, bolted-on soft patch overhead means that if one day you need to change engines or fuel tanks, you can remove them from the boat without cutting into the deck. That's a nice little design tidbit with an eye toward the future, and perhaps the resale market as well.

Exclusions

Owner's personal belongings.

Disclaimer

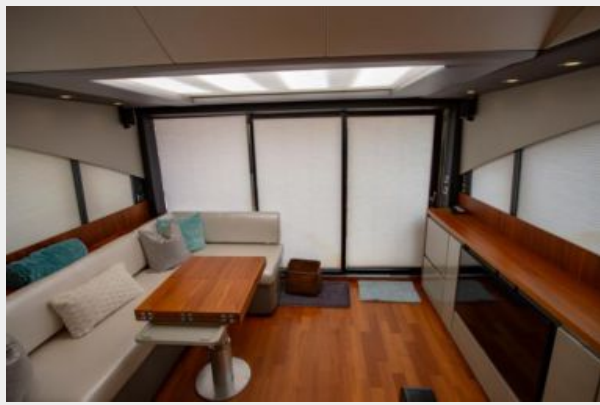
The Company offers the details of this vessel or yacht in good faith but cannot guarantee or warrant the accuracy of this information nor warrant the condition of the vessel. A buyer should instruct his representatives, agents, or his surveyors, to investigate such details as the buyer desires validated. This vessel or yacht is offered subject to prior sale, price change, or withdrawal without notice.

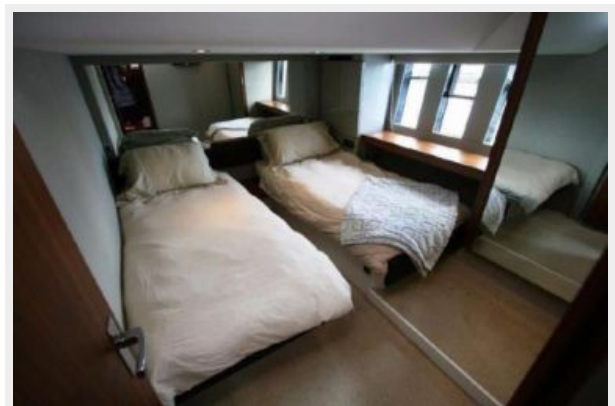
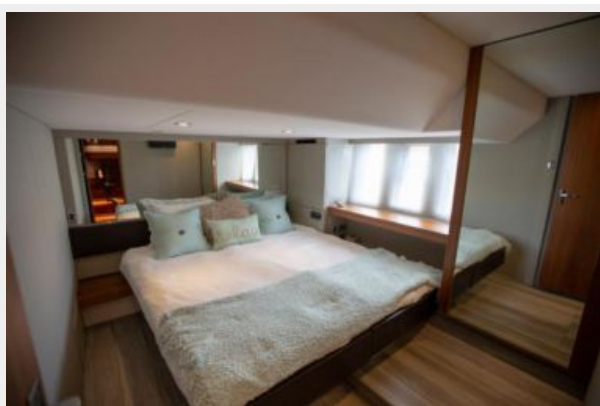
PHOTOS







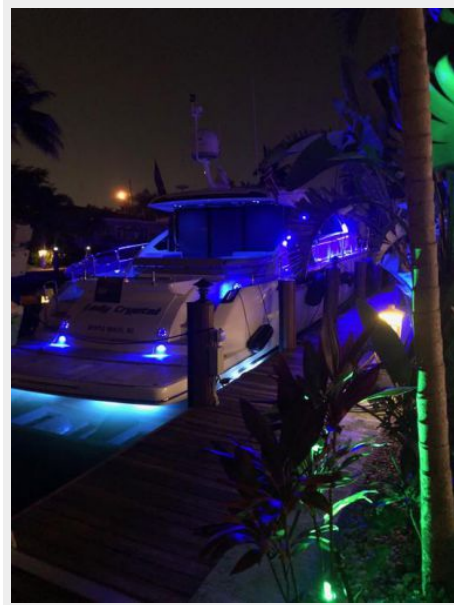












CONTACTS

Andrey Shestakov, leading yacht broker of the sales department of Shestakov Yacht Sales Inc. Shestakov Yacht Sales Inc., the official representative of the Miami/Fort Lauderdale FL headquarters.

Contact details

Email:
andrey@shestakovyachtsales.com

Web: shestakovyachtsales.com/en/

Telephones

USA: **+1(954)274-4435**

Office hours

Monday – Saturday: **9:00 - 21:00 EDT**

Sunday: **closed**

Address



Harbour Towne Marina, 850 NE 3rd St,
STE 213, Dania, FL 33004