

PRECIOUS MOMENTS — LAZZARA



Судостроитель: LAZZARA

Год постройки: 2008

Модель: Моторная яхта

Цена: **ЦЕНА ЯХТЫ ПО ЗАПРОСУ**

Местонахождение: United States

Длина общая: 75' 0" (22.86m)

Ширина: 18' 2" (5.54m)

Макс. осадка: 3' 6" (1.07m)

Крейс. скорость: 24 Kts. (28 MPH)

Макс. скорость: 30 Kts. (35 MPH)

Купить **PRECIOUS MOMENTS — LAZZARA** а также выбрать подходящую вам яхту из нашего каталога яхт вам поможет опытный яхтенный брокер Андрей Шестаков. На сегодняшний день компания **Shestakov Yacht Sales Inc.** имеет большое количество яхт в собственном списке продаж, а также тесно сотрудничает со всеми крупными яхтенными производителями по всему миру.

Для того чтобы купить яхту **PRECIOUS MOMENTS — LAZZARA** а также проконсультироваться по любому вопросу связанному с покупкой, продажей, чартером яхт позвоните по телефону **+7(918)465-66-44**.

ОГЛАВЛЕНИЕ

ОГЛАВЛЕНИЕ	2
ХАРАКТЕРИСТИКИ	5
Обзор	5
Основная информация	5
Размеры	5
Скорость, вместимость и масса	5
Размещение	6
Корпус и палуба	6
Информация о двигателе	6
ПОДРОБНОЕ ОПИСАНИЕ	7
Vessel Information	7
Manufacturer Provided Description	20
Исключения	20
Отказ от ответственности	20
ФОТОГРАФИИ	21
Main Salon	21
Main Salon	21
Main Salon	21
Main Salon	21
Galley	22
Galley	22
Galley - Dinette	22
Dinette	22
Day Head	23
Laundry	23
Master Stateroom	23
Master Stateroom	23
Master Stateroom Head	24

Master Stateroom	24
Master Stateroom Head	24
Master Stateroom Head	24
Port Stateroom Head	25
Port Stateroom	25
Starboard Stateroom Head	25
Starboard Stateroom	25
Forward Stateroom	26
Forward Stateroom Head	26
Stairway to Helm	26
Helm - Open Skylight	26
Helm - Closed Skylight	27
Aft Deck	27
Aft Deck	27
Aft Deck	27
Aft Deck	27
Aft Deck Driving Station	27
Port Passageway	28
Starboard Passageway	28
Bow Profile	28
Bow	28
Bow	29
Crew Quarters	29
Crew Quarters	29
Crew Head	29
Engine Room	30
Engine Room	30
Engine Room	30
Engine Room	30

Engine Room	30
Engine Room	30
Stern View	31
КОНТАКТЫ	32
Контактная информация	32
Телефоны	32
Время работы	32
Адрес	32

ХАРАКТЕРИСТИКИ

Обзор

PRECIOUS MOMENTS (a 2008 Lazzara LSX75) is the very best maintained Lazzara LSX75 ever. She shows in perfect condition. The owner has spared no expense to maintain her and the captain has kept her in show-ready condition at all times. See the full list of upgrades below including a Crestron A/V system with iPad controls throughout.

PRECIOUS MOMENTS is everything an express yacht should be and more! She has a level of luxury, performance and style that is second to none. Onlookers will be awe-struck, from her sleek modern styling whether she is dockside or cutting across the water! With a clean, contemporary design and cutting edge performance she is a dream to own and operate.

If you are looking for a turn-key yacht in need of nothing, then PRECIOUS MOMENTS is the one.

Основная информация

Тип судна: Моторная яхта

Модельный год: 2008

Год постройки: 2008

Страна: United States

Размеры

Длина общая: 75' 0" (22.86m)

Длина по ватерлинии: 62' 1" (18.92m)

Ширина: 18' 2" (5.54m)

Макс. осадка: 3' 6" (1.07m)

Трапы: 17' 0" (5.18m)

Скорость, вместимость и масса

Крейс. скорость: 24 Kts. (28 MPH)

Макс. скорость: 30 Kts. (35 MPH)

Вместимость воды: 200 Gallons

Вместимость сточного бака: 100 Gallons

Объем топливного бака: 830 Gallons

Размещение

Всего кают: 4

Всего коек: 4

Спальные места: 8

Всего ком. состава: 5

Корпус и палуба

Материал корпуса: Fiberglass

Информация о двигателе

Двигатели: 4

Производитель: Volvo Penta

Модель: IPS Pod Drives

Тип топлива: Diesel

ПОДРОБНОЕ ОПИСАНИЕ

Vessel Information

PRECIOUS MOMENTS (a 2008 Lazzara LSX75) is the very best maintained Lazzara LSX75 ever. She shows in perfect condition. The owner has spared no expense to maintain her and the captain has kept her in show-ready condition at all times. See the full list of upgrades below including a Crestron A/V system with iPad controls throughout.

PRECIOUS MOMENTS is everything an express yacht should be and more! She has a level of luxury, performance and style that is second to none. Onlookers will be awe-struck, from her sleek modern styling whether she is dockside or cutting across the water! With a clean, contemporary design and cutting edge performance she is a dream to own and operate.

If you are looking for a turn-key yacht in need of nothing, then PRECIOUS MOMENTS is the one.

Vessel Information

Upgrades

- New Williams Jet tender Turbojet 325
- 2x 8 man Revere offshore Elite (deluxe life-raft)
- New carpet throughout the yacht
- Two new leather couches
- New exterior cushions
- New exterior canvas covers
- Updated Crestron system with iPad controls
- Marble polished throughout
- AC serviced
- Two sets of spare props
- Spare rebuilt upper and lower unit package
- New ISIS monitoring system
- Brand new G-PIRB, GPS locator
- Marble polished

Main Salon

- Overhead Lighting LED
- Nightlight (2 each, red)
- Lighting 120 low volt, halogen
- High gloss wood interior
- Storage cabinets
- Salon carpet/pad, flooring with wood flooring at entry way
- Sectional sofa in Ultra-leather with storage under cushions
- Lounge chair
- Pleated fabric shades
- Sunroof, retractable hydraulic
- Wet Bar includes refrigerator
- Bar storage, cabinet with bottle and glass racks
- Coffee table
- 120 VAC duplex receptacles
- Two rain gears locker
- Toshiba 42 " LCD TV
- Bose Lifestyle 28 series III home theater system with surround sound

Galley/Dinette

- Toshiba 23" HL V 86 LCD TV with DVD
- Microwave/convention oven
- Designer range hood
- Stainless steel appliances
- Side-by-side refrigerator

- Scottsman icemaker
- Granite countertops
- Cook-top recessed four-burner
- Storage cabinets, upper and lower
- Settee with storage
- Custom dinette table with storage
- Glass serving area
- Lighting, indirect
- Wood plank floor
- Fire blanket
- Two barstools
- 120 Vac duplex receptacles (GFI protected)
- Stainless steel "apron" sink with single lever

Laundry Center

- Bosch stacked washer & dryer
- Linen closet

Master Stateroom

- Sonance I port in wall docking system for Ipod map 350
- 32" Toshiba LCD TV with DVD/CD player
- Sonance I port video upgrade kit
- Walk around Lazzara- size King bed w/ innerspring mattress
- Vanity with makeup mirror
- Ottoman desk chair
- Two dressing bureaus port side w/ 6 drawers each

- Two dressing bureaus stbd side w/ 6 drawers each
- Veneered night stand, port & stbd w/ wood tops and drawers/ bureaus, port and starboard with soft close drawers
- Upholstered loveseat starboard side
- Shades over panoramic windows
- Private access to head
- Carpeted through-out
- Majilite overhead panels w/ foam backing
- Fabric wall coverings, removable panels
- Two "Horizon" panoramic windows
- Window treatment
- Direct and Indirect lighting with decorative sconces
- Receptacles: 120 VAC duplex

Master Bathroom

- Sharp 15" AQUOS LCD TV 4:3 with tuner & speakers
- Marble vanity top w/ two under mount sinks
- Brushed nickel fixtures
- Closet w/ mirrored doors
- Clothing bureau w/ drawers
- Medicine cabinet w/ beveled mirror
- Infinity edge marble flooring
- Marble enclosed full size shower w/ seamless glass enclosure
- Headhunter marine toilet
- Shower panel system w/ multiple body sprays
- Exhaust fan

- Two 120 VAC duplex receptacles w/ ground fault breakers
- Linen closet
- Pull out clothes hamper

2 VIP Staterooms

- Lazzara double size bed with innerspring mattress
- Glass window on inboard cabin wall
- Headboard
- Hanging locker with full length mirrored door
- Nightstand w/ drawers
- Storage drawers under bed
- Carpet through-out
- Majilite overhead panels with foam backing
- Blinds over window
- "Horizon" panoramic windows
- Direct & indirect Lighting
- Receptacle: 120 VAC duplex
- Upgraded bilge access and storage

VIP Bathrooms

- Headhunter marine toilet
- Power vent fan
- Glass towel shelf with rails
- Storage, medicine cabinet w/ frosted glass front
- Custom vanity with marble flooring
- Shower panel system w/ multiple body spray

- Chrome and brushed nickel fixtures
- Marble shower w/ seamless glass enclosure
- Shower panel system w/ double body spray
- Wall mounted soap dish tumbler and tissue holder
- 120 VAC duplex receptacles (GFI protected)

Forward Guest Stateroom

- Lazzara queen bed with innerspring mattress
- Toshiba 15" LCD TV with DVD
- Hanging Locker
- Chain locker bulkhead with access
- Storage cabinet w/ drawers and shelves
- 24V reading lights (12 volt) LED
- Lighting low voltage AC halogen
- Deck hatch/screen/blackout
- Carpeted through-out
- Storage under bed
- 120 VAC duplex receptacles
- Chrome and brushed nickel fixtures

Forward Guest Bathroom

- Lighting low voltage AC halogen
- Infinity edge marble flooring
- Power vent fan
- Shower panel system w/ multiple body sprays
- Shower with seamless glass enclosure

- Headhunter marine toilet
- Storage & medicine cabinet
- Vanity with marble countertop and back splash
- Wall mounted soap dish, tumbler and tissue holder
- 120 VAC duplex receptacles (GFI protected)

Crew Quarters

- Access to main deck
- Access to main engine room
- Bunk, lower with storage drawers
- Bunk, upper
- Flooring & carpet
- Lighting, low voltage AC halogen
- Outlets 120 V GFI protected

Crew Head

- Headhunter marine toilet
- Shower and sink
- 120 VAC duplex receptacles (GFI protected)

Communications

- One VHF Simrad RS-87 VHF radio/fog horn/hailer
- Telular cell phone GSM 850/1900 w/3db cell antenna
- Sea Key telematics w/SOS

Navigation

- Salon helm station
- Fully instrumented helm console, including electronic engine controls
- One single custom electric helm chair, fully adjustable, leather (electric D/C)
- One double seat companion chair adjustable manually fore and aft
- GPS/plotter/radar/sounder Nobeltec TIME ZERO
- Autopilot: Simrad AP 26
- Compass displays: Simrad IS 15
- (3) 15" LCD displays

Electrical

Enhanced Electronic Package Includes:

- KVH SAT 525Trac phone system
- CCTV system with dome camera in engine room
- Output to helm monitor Thermo Vision Mariner Imaging system
- Thermal night vision camera by FLIR systems with output to helm monitor
- Simrad Bluetooth wireless autopilot control
- Four additional satellite TV receivers

Exterior Lighting :

- Overhead LED lights aft deck

Navigation Lights:

- Forward streaming lights, Port/ Stbd. side running lights, Stern running light, Anchor light
- Exterior LED deck lights
- Aft deck LED transom stairs
- Boat deck LED lighting

- Searchlight, Chrome

Interior Lighting:

- Overhead LED lighting (low voltage DC)
- Emergency 24 volt DC lighting

Shore Power:

- Glendenning cable master @ 100 Amp/240V/60 cycle w/ 100 ft. cord and wireless remote
- Isolation transformer, 240V/24 KVA/100 Amp
- Batteries (AGM) Group 31
- 2 GPL 3100T for generator
- 8 GPL 3100 T/M for engines
- 2 GPL 40 L for house
- 2 battery charges (40 Amp Charles charges)
- Panel AC main selector – 240v
- Panel main distribution - AC / DC

Generator:

- Onan 27.5 kw with 2,485 hours

Electrical Grounding:

- Bonding system w/ large zinc hull plate
- IPS w/ separate drive and hull zincs

Main Deck Outfitting

Anchor & Anchor handling:

- Anchor, stainless steel
- Anchor chain storage in forepeak locker
- Anchor Chute, stainless steel
- Anchor wash-down spigot with hose
- Windlass, chain w/ controls

Deck Hardware:

- Forward sun pad speaker craft for two 5" speakers
- Air Horn
- Windshield wiper system 24v dc / pantograph type with washer system
- Lazzara custom 16" bow, sprint and stern cleats, 316L steel rails on main deck
- Forward hatch to bow cabin
- Bulwark boarding doors port and stbd.
- Teak aft deck and swim platform deck

Aft Deck Transom/ Outfitting:

- Aft Deck Sunbrite 20" TV all weather LCD HDTV compatible with fold up lift
- Deck self - bailing
- Teak flooring
- Indirect Lighting
- Aft stateroom access hatch
- Teak steps, stbd. access hatch for engine room
- Storage side panels - port
- Corian table in cockpit
- Spears overhead
- Overhead cockpit lights

- Low level courtesy lights
- Aft deck bar w/ stools
- Ships bell
- Stainless steel baby gates w/ acrylic inserts
- Storage compartments

Safety & Fire Protection

Fire suppression system-automatic with engine shutdown, override and manual pull

Exhaust System:

- Carbon monoxide detectors in crew cabin and master head
- Underwater, through drive units

Engine/Mechanical Equipment

- 4 x Volvo IPS 600 systems
- 435 HP Each
- Nibral duo - prop

Air Conditioning System:

- Six zone 92,000 BTU air conditioning system with air handlers and thermostats for each zone
- Touch pad controls
- Insulated copper piping supply and return lines
- Individual head exhaust fans

Bilge System:

- 24 VDC automatic bilge pumps (1 aft, 1 fwd., 1 engine room)
- 24 VDC high-water alarm (1 aft, 1 fwd., 1 engine room)

- Two Emergency bilge pumps, engine driven

Control & Instrument Main Engines:

- Volvo display all engines
- Station Transfer panels
- Shift & Throttle controls, electronic with engine sync
- Volvo joystick control for docking and slow speed maneuverability
- Volvo Electronic Steering
- Key Switch Start/stop

Cockpit control Station:

- Joystick control Volvo
- Station transfer panels
- Start/stop panels
- Lazzara Engineered "Ultra Sound" engine room system
- Interior "Isolation Dampering" system
- Thermo barrier foil

Engine Room:

- Epoxy coated engine room, White
- Flooring, metal diamond plate
- Volvo control panel for engines & drives
- Fresh water hose & spigot
- Aft Deck access
- Forward engine room stateroom access
- Lazzara engineered "ultra sound" engine room

- Powered ventilation system
- 2x 8 man Revere offshore Elite (deluxe life raft)

Additional Features

Brownie Hookah Diving Pkg: B230X includes an oil free electric compressor and reservoir bottle, powered level winding reel with 150ft of hose, 2 diver sets with hose belts and regulators.

Exterior Teak Pkg:

- Teak weather decks and bow decks
- Sunbrella rail covers
- Teak aft deck table in lieu of Corian

Electronic Smart Glass Privacy Pkg:

Transom Garage door window looking into engine room, laminated glass port Stbd.

VIP staterooms, laminated glass, 120 volt activated, dual mode: transparent & opaque

Underwater Lighting & Camera Pkg:

- Six high intensity metal halide underwater lights
- Sea Vision underwater color camera with output to LCD monitor at helm station

Watermaker: Sea Recovery reverse osmosis water maker, 450 gallon per day

Remarks

- Engine #3, Inboard starboard was replaced in 2011
- Engine #1, Outboard port had an ECM replaced

Exclusions

- Coffee machines
- Towels
- Kitchen items
- Tools

Manufacturer Provided Description

It's hard to imagine one yacht being everything to everybody, but the revolutionary Lazzara LSX Quad 75 exceeds expectations on every level. Lazzara has evolved its signature lines to reflect a combination of European style coupled with American boldness. Onlookers will stand in awe, whether she's dockside or cutting across the ocean at full throttle.

The layout is designed with comfort and convenience in mind. Technological considerations maximize entertainment and safety options. From a performance standpoint the engines and drive systems make the LSX the most user-friendly large yacht on the market. The Volvo Penta IPS system is ideal because its four-engine configuration delivers the most power at the highest scale of economy.

Furthermore, the joystick operation makes for effortless handling of this extraordinary vessel, even for novice captains.

Исключения

При продаже яхты исключаются личные вещи владельца.

Отказ от ответственности

Компания предоставляет описание судна или яхты добросовестно, но не может гарантировать точность этой информации, а также не ручается за техническое состояние. Покупатель должен проинструктировать своих агентов или оценщиков исследовать представленную информацию более подробно, по собственному желанию. Продажа судна или яхты, изменение цены или снятие с продажи будет происходить без предварительного уведомления.

ФОТОГРАФИИ

Main Salon



Main Salon



Main Salon



Main Salon



Galley



Galley



Galley - Dinette



Dinette



Day Head



Laundry



Master Stateroom



Master Stateroom



Master Stateroom



Master Stateroom Head



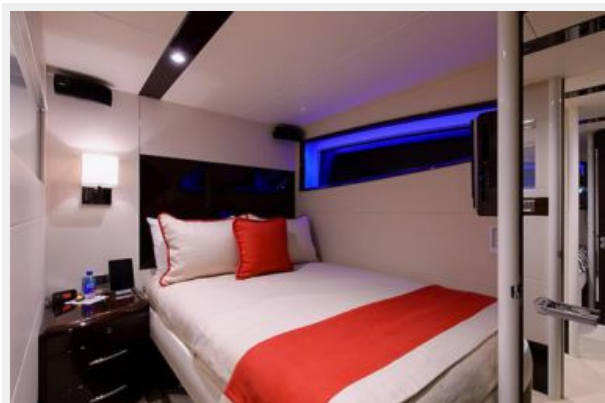
Master Stateroom Head



Master Stateroom Head



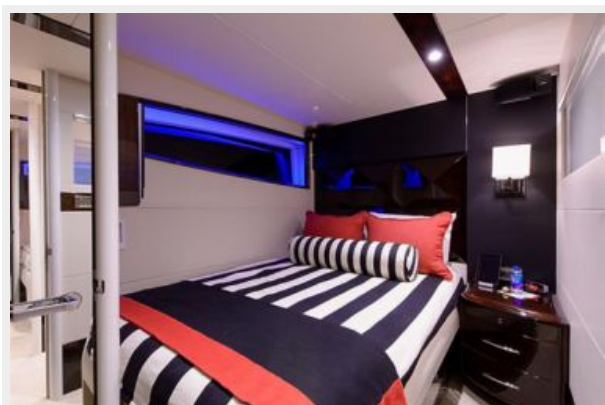
Port Stateroom



Port Stateroom Head



Starboard Stateroom



Starboard Stateroom Head



Forward Stateroom



Forward Stateroom Head



Stairway to Helm



Helm - Open Skylight



Helm - Closed Skylight



Aft Deck



Aft Deck



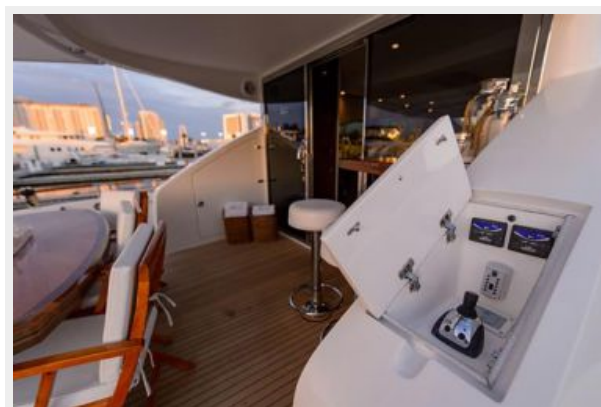
Aft Deck



Aft Deck



Aft Deck Driving Station



Port Passageway



Starboard Passageway



Bow Profile



Bow



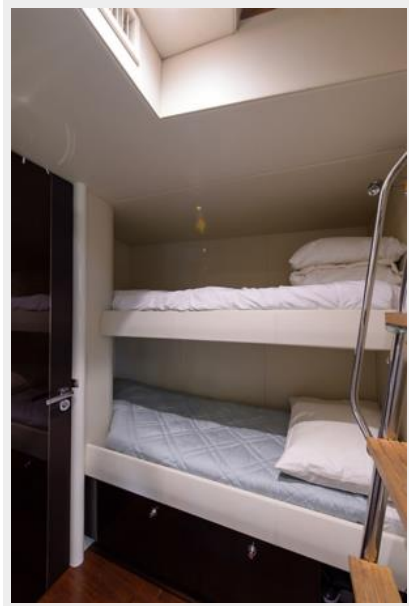
Bow



Crew Quarters



Crew Quarters



Crew Head



Engine Room



Engine Room



Engine Room



Engine Room



Engine Room



Engine Room



Stern View



КОНТАКТЫ

Андрей Шестаков (Andrey Shestakov) – ведущий яхтенный брокер отдела продаж яхт и судов компании Shestakov Yacht Sales Inc. Официальный представитель Shestakov Yacht Sales Inc. для русскоговорящих клиентов в центральном офисе компании в Майами/Форт Лодердейл/Флорида/США.

Контактная информация

Email: andrey@shestakovyachtsales.com

Web: shestakovyachtsales.com

Телефоны

Краснодарский край: **+7(918)465-66-44**

США, Майами, Флорида: **+1(954)274-4435**

Время работы

Понедельник – Суббота: **9:00 - 21:00**
EDT

Воскресенье: **Закрито**

Адрес



Harbour Towne Marina, 850 NE 3rd St,
STE 213, Dania, FL 33004