

SEX SEA — HAMPTON



Судостроитель: HAMPTON

Год постройки: 2008

Модель: Моторная яхта

Цена: ЦЕНА ЯХТЫ ПО ЗАПРОСУ

Местонахождение: United States

Длина общая: 63' 0" (19.20m)

Ширина: 18' 0" (5.49m)

Мин. осадка: 5' 2" (1.57m)

Макс. осадка: 5' 2" (1.57m)

Крейс. скорость: 19 Kts. (22 MPH)

Купить Sex Sea — HAMPTON а также выбрать подходящую вам яхту из нашего каталога яхт вам поможет опытный яхтенный брокер Андрей Шестаков. На сегодняшний день компания Shestakov Yacht Sales Inc. имеет большое количество яхт в собственном списке продаж, а также тесно сотрудничает со всеми крупными яхтенными производителями по всему миру.

Для того чтобы купить яхту Sex Sea — HAMPTON а также проконсультироваться по любому вопросу связанному с покупкой, продажей, чартером яхт позвоните по телефону **+7(918)465-66-44**.

ОГЛАВЛЕНИЕ

ОГЛАВЛЕНИЕ	2
ХАРАКТЕРИСТИКИ	7
Обзор	7
Основная информация	7
Размеры	8
Скорость, вместимость и масса	8
Размещение	8
Корпус и палуба	8
Информация о двигателе	8
ПОДРОБНОЕ ОПИСАНИЕ	9
Key Features	9
Salon	9
Galley & Dining	9
Master Stateroom	10
Master Head	11
VIP Stateroom	11
VIP Head	11
Guest Stateroom	11
Skylounge/Flybridge	12
Helm	12
Deck	13
Electronics	13
Engines & Mechanical	13
Additional Features	15
Design Features	15
Broker's Note	16
Exclusions	16
Исключения	16

Отказ от ответственности	16
ФОТОГРАФИИ	17
Galley, Breakfast Bar	17
Salon	17
Tender, Davit	17
Spacious Master Stateroom	17
Country Kitchen	17
Salon	17
Salon, Winecooler	18
Salon	18
Salon	18
Galley, Pullout Dishwasher	18
4 Burner Gas Stove	18
Marble Countertops Galley	18
Stainless Steel Appliances	19
Galley Microwave	19
Galley Entertainment Center	19
Country Kitchen	19
Country Kitchen	19
Country Kitchen	19
Port Pilothouse Door	20
Hampton 63 Electrical Panel, Companionway	20
Salon Built In Wine Cooler	20
Salon VHF Radio	20
Companionway to Staterooms	21
Master Kingsize	21
Master Stateroom	21
Master Stateroom Extra Storage	21
Cedar Lined Hanging Lockers	22

Master Head	22
Master Stateroom Head Vanity	22
Master Stateroom Head	22
Master Stateroom Washer and Dryer	23
Master Stateroom Vanity and Extra Storage	23
VIP Centerline Stateroom	23
VIP Stateroom	23
VIP Storage	23
VIP Ensuite Head	23
VIP	24
VIP Storage	24
VIP Head	24
VIP Head	24
VIP Head	25
VIP Shower	25
Guest Stateroom	25
Guest Stateroom	25
Bridge Companionway	26
Guest Stateroom	26
Helm	26
Upgraded Garmin Electronics	26
Helm	26
Helm Chairs, Bridge Wet Bar, Dropdown TV	26
Bridge Video Cameras	27
Bridge Hatch, Bridge Video	27
Bridge Video Cameras	27
Enclosed Bridge, Electric Window Shutters	27
Bridge Fold Down Table	27
Bridge Settee	27

Bridge Electric Fold Down TV	28
Bridge Wet Bar	28
Cockpit to Bridge Stairs	28
Bridge Door to Aft Deck	28
Cockpit	28
Cockpit, Wet Bar and Built In TV	28
Cockpit	29
Starboard Docking Station	29
Port Docking Station	29
Cockpit Boarding Gate	29
Cockpit Video Camera	29
Built In TV and Wet Bar, Boarding Ladder Storage	30
Port Gunnel	30
Starboard Gunnel	30
Bow Sunpads, Drink Holders, Seating	30
Bow Sunpads, Drink Holders, Seating	30
Bow Lazarette	30
Starboard Pilothouse Door	31
Bow Seating, Sunpads, Storage Lazarette	31
Huge Swim Platform	31
Stern	31
Stern Hot and Cold Shower	32
Gas Storage for Galley Stove	32
Tender	32
Tender	32
Large Engine Room, Caterpillar 1000 Hour Service Just Completed Ahead of Schedule	33
Davit	33
Clean, Spotless Engine Room	33
Clean, Spotless Engine Room	33

Centerline Fuel Tanks with Site Tubes, Hydraulics	34
Dual Generators	34
Spare Props	34
Port Engines	34
Oil Change System	34
Dual Generators	34
Layout	35
Dual Generators	35
Port Profile	35
Port Profile	35
Aft View	36
Aft View	36
Aft View	36
Starboard Profile	36
Running Profile	36
Bow	37
Evening Cruise	37
Evening Cruise	37
КОНТАКТЫ	38
Контактная информация	38
Телефоны	38
Время работы	38
Адрес	38

ХАРАКТЕРИСТИКИ

Обзор

This Hampton 63' Enclosed Bridge Motor Yacht 2008 Model, is loaded with options since new. Her first owner built her using his over 60 years of yacht building experience and owning many different Motor Yachts of multiple brands traveling abroad. His vast yacht knowledge, experience and Hampton's Yachts willingness to partner and please this owner makes Sex Sea one of the best 63's offered on today's market in this size yacht. Come see and inspect for yourself...

What sets Sex Sea apart even farther from the rest, is that she has a Country Kitchen layout with a nice size breakfast bar in the galley area and a spacious settee in front of the galley surrounded by very large windows and two pilot doors for the most warm setting with family and friends to be together. This feature is usually found in larger yachts over 100' plus! Sex Sea is way ahead of her time with these features and other luxurious beautiful Cherry Wood construction throughout the yachts layout. Compared with other top yacht brands, this Hampton is an absolute must see!

Sex Sea, was specked and built to have the more reliable and largest Caterpillar C-18 (1015hp) engines in her, for optimum performance and low speed economy for the long range stabilized cruiser. Spotless, spacious, well executed engine room for the top engineers to work in with a separate pump house for easy maintenance, system monitoring and extra storage areas. Two separate Kohler Generators to support all your electrical power needs away from the dock and a Fresh Water Maker for all your water needs, stabilizers, bow and stern thrusters and separate docking stations. NOTE: 1000 HOUR CATERPILLAR SERVICE COMPLETED AHEAD OF SCHEDULE BY CATERPILLAR.

Updated Garmin Electronics, HD 7 Sat TV and other premium Raymarine electronics in the Enclosed Bridge Helm area. Comfortable, spacious Salon surrounded in warm high gloss Cherry wood joinery, large covered aft deck with lots of space/storage and extra seating with easy access to the large swim platform. Three magnificent, large staterooms for pampering all her guests in luxury and comfort.

Whether your interest is safe, luxurious and comfortable passage-making, harbor hopping along the islands or coast maybe even living on board...Sex Sea will exceed your expectations for a super clean professionally maintained yacht. She is easy to inspect anytime and her sellers will consider all trades.

Основная информация

Тип судна: Моторная яхта

Модельный год: 2008

Год постройки: 2008

Страна: United States

Размеры

Длина общая: 63' 0" (19.20m)

Ширина: 18' 0" (5.49m)

Мин. осадка: 5' 2" (1.57m)

Макс. осадка: 5' 2" (1.57m)

Трапы: 21' 0" (6.40m)

Длина привального бруса: 63' 8" (19.41m)

Скорость, вместимость и масса

Крейс. скорость: 19 Kts. (22 MPH)

Водоизмещение: 75000 Pounds

Вместимость воды: 300 Gallons

Вместимость сточного бака: 100 Gallons

Объем топливного бака: 1200 Gallons

Размещение

Всего кают: 3

Всего ком. состава: 2

Корпус и палуба

Материал корпуса: Fiberglass

Информация о двигателе

Двигатели: 2

Производитель: Caterpillar

Модель: C-18

Тип двигателя: Inboard

Тип топлива: Diesel

ПОДРОБНОЕ ОПИСАНИЕ

Key Features

- CAT C18 certified engines
- Spare props
- Stabilized
- Bow and stern thrusters
- Davit and tender on bridge
- Comprehensive electronic package
- Two generators
- Two docking stations
- 1000 hour CAT service completed 2016
- Sat TV, HD7
- Watermaker
- Extensive spare parts kits with redundant AC pumps plumbed in line
- Separate freezer upright for cruising
- 100 lb. Bruce anchor, 275' anchor chain
- Bridge electric blinds

Salon

- **Large windows and expansive space**
- Entertainment cabinet with Built in 40" Sharp TV, bar and bottle storage
- Bose Lifestyle 28 surround sound System
- Lighted glass china cabinet with burl top
- Large wood high/low coffee table with burl inlay
- Starboard side large L shape settee
- (2) port side chairs
- Port side table with burl top
- Port side cabinet with wine cooler, icemaker and glass cabinet with burl top
- Overhead decorative burl ceiling treatment
- Stainless steel aft sliding door with tinted safety glass
- Frameless tinted windows
- Audio controls for salon, cockpit, and country kitchen
- LED overhead lighting with dimmer controls

Galley & Dining

Creating a truly expansive interior, the open layout of the country kitchen provides a huge dining and entertainment area open to the galley and salon.

- Stainless steel aircraft style pilothouse doors port and starboard decks
- Frameless windows with 10mm safety glass forward
- Cherry and Holly floor
- Interior stairway leading to Skylounge
- Electric blinds for forward windows
- Granite countertop with double sink and upper serving shelf
- Granite Galley floor
- Two bar stools at service counter
- GFI Outlets
- LED overhead lighting with dimmer controls
- Oversized built-in dinette settee for 8, with storage drawers at floor level
- Large dinette table with granite table top matching the galley granite
- 27" LCD TV
- LG Refrigerator and Freezer with Icemaker
- Gas (4) Burner Cooktop
- GE under counter full size oven
- GE Microwave/Convection oven
- Trash compactor
- Fisher Paykel Dishwasher
- Insinkerator Garbage disposal
- Stainless Steel double sink
- Grohe faucet
- Insinkerator Instant Water heater
- GE Galley exhaust blower

Master Stateroom

- Full Beam Master
- Oversized queen bed with drawers/storage under and mirror over headboard
- Built in night stand tables with burl top
- Overhead decorative redwood burl ceiling treatment
- (5) Cedar lined hanging lockers
- Port side has (2) hanging lockers and drawer and cabinet units with burl top
- Stbd side has (3) hanging lockers and a make-up table with mirror and drawers and burl top
- Stool for Make-up table
- Reading lights on both sides of the bed
- LED overhead lighting with dimmer controls 24volt
- Rope lighting hidden from view
- Opening SS port lights
- 30" Sharp TV
- Pioneer AM/FM/DVD/CD Surround Sound Entertainment System
- Compartment for 8 cases of wine located under master berth

Master Head

- Full size shower
- Grohe multi-port shower full body jet sprays
- Corian Countertops and Floors
- Burl wood face cabinets
- LED lighting
- GFI outlets
- (2) Port lights that open
- (2) Tecma silent toilets
- (1) sinks with Grohe faucets
- Ocean Air exhaust fans
- Towel holders

VIP Stateroom

- Island queen sized berth with hinged top and drawers under
- Two cedar lined hanging lockers
- (6) cabinets and (2) drawers
- Overhead screen with manual blackout screen
- LED overhead lighting with dimmer controls
- 27" Sharp LCD TV
- Pioneer AM/FM/DVD/CD Surround sound entertainment system
- Two additional reading lights

VIP Head

- Full size stall shower
- Corian floor tiles
- Corian countertops
- Burl wood face cabinets
- LED overhead lighting
- GFI outlets
- Port-light that opens
- Tecma silent toilet
- Grohe faucet
- Grohe shower faucet unit
- Ocean air exhaust fan
- Towel and tissue holder

Guest Stateroom

- (2) Twin Beds
- Cedar lined hanging locker
- LED overhead lighting with dimmer controls
- (2) Opening SS Port-lights
- 19" Samsung LCD TV
- Pioneer AM/FM/DVD/CD Stereo with Pioneer speakers

Skylounge/Flybridge

- Cherry and stainless stairway from galley
- Superbly finished in Makore wood throughout
- Flooring is FRP and carpet
- Large L-shaped seating with storage
- Skylounge high/low drop leaf table in wood
- Skylounge wet bar with sink, refrigerator, cabinets and burl top
- Frameless windows with 10mm safety glass forward
- Port and Starboard sliding windows
- Electric blind controls
- Rear stainless steel door to aft deck
- LED overhead lighting with dimmer controls
- 26" Sharp LCD TV
- Increased AC outlets and ductwork for maximum cooling
- Refrigerator/Icemaker with wood trim
- Scandvik sink and Scandvik faucet
- Two Pompanette signature series Helm chairs on SS pedestal (Captain electric, guest manual)

Helm

- Helm finished in beautiful wood burl surface
- Chart storage drawer
- Destroyer wheel with wood trim
- Seastar Hydraulic power steering with motive pump on each main engine
- Dual Caterpillar MPD's
- Air Horn
- ARC Search Light
- System indicator panel
- Water and fuel tank gauges
- WEMA tank level indicators
- Three Windshield wipers with washers
- Hynautic trim tab controls
- VDO rudder position indicator

- Sidepower Bow and Stern Thrusters
- Wesmar stabilizers with 6.0 sq. ft. fins

Deck

Upper Aft Deck

- 1000 lb Davit with power lift and power rotate
- Wireless remote control for the Davit

Lower Aft Deck/Transom

- Large Corian table with edging
- Seating unit with Corian on center table
- 20" LCD TV in cabinet enclosure
- Sink with Shurflo faucet and storage cabinet
- Engine room access from aft deck floor with power lift
- Water tight aircraft style transom door
- Teak treads on steps to swim platform
- Stainless steel swim ladder
- Hot and cold shower unit
- Stainless steel platform rails with storage receptacles for boarding dinghy
- Boarding ladder storage in the portside vertical riser
- (2) Independent Hydraulic Engine and Sidepower thruster controls on both the starboard and port side vertical risers
- LED overhead lighting with dimmer controls

Electronics

- (2) Garmin 5212 GPS Plotters/Depth
- (2) VHF Radio's
- Raymarine Auto Pilot
- Raymarine Wind Meter
- Raymarine Tri Data Depth/Speed/Temp
- Azimuth Compass #1000
- (2) Camera Monitors on Bridge
- KVH 7 HD Sat TV System

Engines & Mechanical

Engine Room

- **CATERPILLAR 1000 HOUR SERVICE COMPLETED AHEAD OF SCHEDULE!**
- Dual Caterpillar C-18 ACERT Engines rated @1015 HP (987 hours)
- Racor fuel filters for each engine and 2 generators
- Jabsco engine room blowers
- Aqua 3" diameter drive shaft
- ZF500 Transmissions
- ZF 38.5 Props with 35.5" pitch - spare props
- Headhunter fresh water pumps
- Seaward 20 gal hot water heater
- Rule automatic bilge pumps
- Bosworth guzzler manual bilge pump
- Reverso oil changing system
- Marine Air AC Air handler
- (2) Chilled air reverse cycle AC system / 120KBTU
- Spare raw water pump with selector valves for AC cooling water
- Underwater exhaust system with bypass to transom
- Dripless packing glands with spare seals on shafts
- Dripless packing water supplies from both engines
- Engine room surfaces lined with insulation
- Fiberglass exhaust mufflers
- 300 gal fresh water tank
- Pressurized fresh water system
- (3) fuel tanks 1200 gallons total
- 100 gallon waste holding tank with macerator pump
- SS rudders and rudder posts with dripless shaft seals
- Color copper coded fuel, water and hydraulic fluid lines
- Seacocks and sea strainers on all through hull fittings for engine and generator raw water
- Engine room 110 Volt AC and 24Volt DC lights
- Engine room fire suppression and shut down system
- Emergency bilge pump with main engines with valves
- Fresh water outlets
- White polyurethane painted bilge

Electrical System

- Kohler 23KW/60Hz Generator with sound shield (1507 hours)
- Kohler 15.5KW/60Hz Generator with sound shield (1502 hours)
- 3.0 KW Inverter with remote panel
- Charles ISO Boost Transformer (2)
- (2) Glendinning Cablemasters 75' 50 amp/24volt
- Charles Battery Charger 50 amp/24 volt
- (2) Charles Battery Charger 50 amp/24 volts
- (6) 200 amp heavy duty batteries with battery boxes
- (8) 100 amp heavy duty batteries with battery boxes

- **(2) 4D Batteries - NEW 2016**
- Complete AC/DC breaker/distribution panel with backlight
- Main breaker panel
- Inverter zone control panel
- Inverter control panel charger monitor
- Generator control panels (2)
- Shore selector switches
- Battery selector switches
- 120 volt electrical outlets throughout
- (2) 50 amp forward shore power connections

Additional Features

- Maxwell 3500 windlass with 2 control stations
- 100 lb Bruce Stainless anchor
- Bosch Washer & Dryer
- Nutone Central vacuum system
- Panasonic phone system
- Side power stern and bow thrusters
- Bow pulpit 275' anchor chain
- Deck wash downs aft and forward decks
- Stainless steel 316 grade mooring cleats, chocks, anchor roller, handrails, and stanchions
- TV, Phone and water inlets
- Stainless steel opening ports with screens
- Screens on entry doors
- Spare A/C Pump, Raw Water Pump, 24v Water Valve for Head, Repair kit for dinghy and 3700 Rule Bilge Pump located under master berth
- (1) New Chilled Water A/C Compressor

Design Features

- Hand-laid solid fiberglass hull in one piece
- Vinylyester resin for first 5 layers of hull lay-up
- Two layers of Kevlar chine to chine and 3 layers of Kevlar in the forward collision zone
- Hand-laid fiberglass deck, deckhouse, and flybridge core with high strength divynycil foam
- Hull and deck joints thru-bolted every 6" sealed and glassed with multiple layers of fiberglass
- Longitudinal and transverse stringer systems
- All doors and windows have tinted glass (not forward helm windows)
- LED lighting throughout the boat
- Interior structural components all bonded to the hull
- Molded FRP rub rails capped with stainless steel trim rails

Broker's Note

Pound for pound and dollar for dollar, this Hampton 63' leads the pack with overall speed, comfort, space and versatility compared to anything in her luxurious class. Both of Sex Sea's owners spared no cost in maintaining this beautiful motor yacht. Sex Sea is in turn key condition and is standing tall for her new owner. All the mechanical has just been serviced by CAT for another year of boating adventures. You will be amazed with her very sea kind stable ride in foul weather. Her systems are top notch and are ready to go. Engine room and bilge are sparkle clean for any engineer.

Want a fun, luxurious motor yacht to enjoy the water lifestyle...come inspect Sex Sea, you won't be disappointed.

Exclusions

Personal Items

Исключения

При продаже яхты исключаются личные вещи владельца.

Отказ от ответственности

Компания предоставляет описание судна или яхты добросовестно, но не может гарантировать точность этой информации, а также не ручается за техническое состояние. Покупатель должен проинструктировать своих агентов или оценщиков исследовать представленную информацию более подробно, по собственному желанию. Продажа судна или яхты, изменение цены или снятие с продажи будет происходить без предварительного уведомления.

ФОТОГРАФИИ

Salon



Galley, Breakfast Bar



Spacious Master Stateroom



Tender, Davit



Country Kitchen



Salon



Salon, Winecooler



Salon



Salon



Galley, Pullout Dishwasher



4 Burner Gas Stove



Marble Countertops Galley



Stainless Steel Appliances

Galley Microwave



Galley Entertainment Center



Country Kitchen



Country Kitchen



Country Kitchen



Port Pilothouse Door



**Hampton 63 Electrical Panel,
Companionway**



Salon Built In Wine Cooler



Salon VHF Radio



Companionway to Staterooms



Master Kingsize



Master Stateroom



Master Stateroom Extra Storage



Cedar Lined Hanging Lockers



Master Head



Master Stateroom Head Vanity



Master Stateroom Head



Master Stateroom Washer and Dryer



Master Stateroom Vanity and Extra Storage



VIP Centerline Stateroom



VIP Stateroom



VIP Storage



VIP Ensuite Head



VIP Storage



VIP



VIP Head



VIP Head



VIP Head



VIP Shower



Guest Stateroom



Guest Stateroom



Guest Stateroom



Bridge Companionway



Helm



Upgraded Garmin Electronics



Helm



Helm Chairs, Bridge Wet Bar, Dropdown TV



Bridge Video Cameras



Bridge Hatch, Bridge Video



Bridge Video Cameras



Enclosed Bridge, Electric Window Shutters



Bridge Fold Down Table



Bridge Settee



Bridge Electric Fold Down TV



Bridge Wet Bar



Bridge Door to Aft Deck



Cockpit to Bridge Stairs



Cockpit



Cockpit, Wet Bar and Built In TV



Cockpit



Starboard Docking Station



Port Docking Station



Cockpit Boarding Gate



Cockpit Video Camera



Built In TV and Wet Bar, Boarding Ladder Storage



Port Gunnel



Starboard Gunnel



Bow Sunpads, Drink Holders, Seating



Bow Sunpads, Drink Holders, Seating



Bow Lazarette



Starboard Pilothouse Door



Bow Seating, Sunpads, Storage Lazarette



Huge Swim Platform



Stern



Stern Hot and Cold Shower



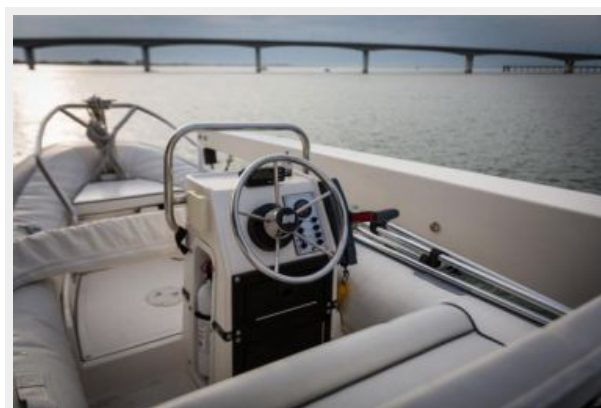
Gas Storage for Galley Stove



Tender



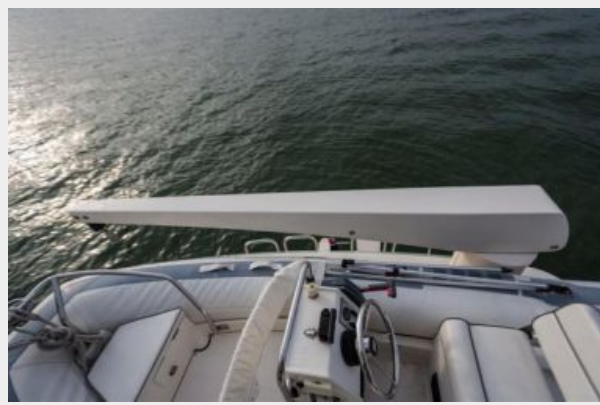
Tender





Davit

Large Engine Room, Caterpillar 1000 Hour Service Just Completed Ahead of Schedule



Clean, Spotless Engine Room

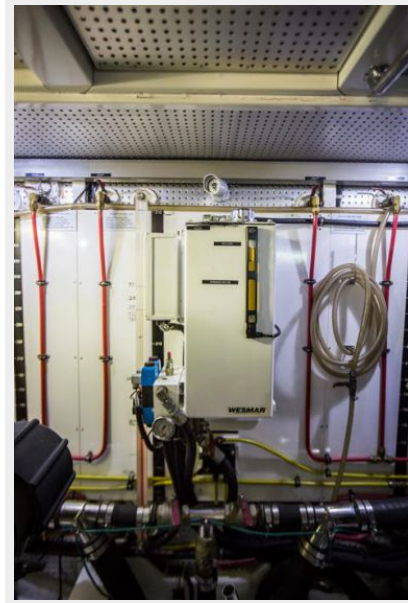
Clean, Spotless Engine Room



Dual Generators



Centerline Fuel Tanks with Site Tubes, Hydraulics



Port Engines



Spare Props



Oil Change System



Dual Generators



Layout

Dual Generators



Port Profile



Port Profile



Aft View



Aft View



Aft View



Starboard Profile



Running Profile



Bow



Evening Cruise



Evening Cruise



КОНТАКТЫ

Андрей Шестаков (Andrey Shestakov) – ведущий яхтенный брокер отдела продаж яхт и судов компании Shestakov Yacht Sales Inc. Официальный представитель Shestakov Yacht Sales Inc. для русскоговорящих клиентов в центральном офисе компании в Майами/Форт Лодердейл/Флорида/США.

Контактная информация

Email: andrey@shestakovyachtsales.com

Web: shestakovyachtsales.com

Телефоны

Краснодарский край: **+7(918)465-66-44**

США, Майами, Флорида: **+1(954)274-4435**

Время работы

Понедельник – Суббота: **9:00 - 21:00**
EDT

Воскресенье: **Закрито**

Адрес



Harbour Towne Marina, 850 NE 3rd St,
STE 213, Dania, FL 33004