

NO NAME — SUNSEEKER



Судостроитель: SUNSEEKER

Год постройки: 2016

Модель: Моторная яхта

Цена: **ЦЕНА ЯХТЫ ПО ЗАПРОСУ**

Местонахождение: United States

Длина общая: 65' 0" (19.81m)

Ширина: 16' 10" (5.13m)

Мин. осадка: 5' 0" (1.52m)

Макс. осадка: 5' 3" (1.60m)

Крейс. скорость: 26 Kts. (30 MPH)

Макс. скорость: 33 Kts. (38 MPH)

Купить No Name — SUNSEEKER а также выбрать подходящую вам яхту из нашего каталога яхт вам поможет опытный яхтенный брокер Андрей Шестаков. На сегодняшний день компания Shestakov Yacht Sales Inc. имеет большое количество яхт в собственном списке продаж, а также тесно сотрудничает со всеми крупными яхтенными производителями по всему миру.

Для того чтобы купить яхту No Name — SUNSEEKER а также проконсультироваться по любому вопросу связанному с покупкой, продажей, чартером яхт позвоните по телефону **+7(918)465-66-44**.

ОГЛАВЛЕНИЕ

ОГЛАВЛЕНИЕ	2
ХАРАКТЕРИСТИКИ	4
Обзор	4
Основная информация	4
Размеры	4
Скорость, вместимость и масса	4
Размещение	5
Корпус и палуба	5
Информация о двигателе	5
ПОДРОБНОЕ ОПИСАНИЕ	6
Features	6
Option Upgrades	6
Construction	8
Deck	9
Bathing Platform	9
Aft Cockpit	9
Flybridge Helm Position	10
Salon	10
Dining	11
Galley	11
Main Helm Console	11
Master Aft Cabin	12
Master En Suite Shower Room	12
VIP Forward Stateroom	13
Forward En Suite Shower Room and Toilet	13
Starboard Guest Cabin	13
Starboard Guest Shower and Toilet/Day Head	14
Port Guest Cabin (with upper galley version only)	14

Engine Compartment and Ancillaries	14
Electrical System	15
Underwater Gear	15
Systems	15
Miscellaneous	16
Исключения	16
Отказ от ответственности	16
ФОТОГРАФИИ	17
КОНТАКТЫ	36
Контактная информация	36
Телефоны	36
Время работы	36
Адрес	36

ХАРАКТЕРИСТИКИ

Обзор

New 2016 65' Sunseeker Manhattan (Only 50 Hours)

Loaded with option upgrades: MAN 1200 engines, Hard-top, Xenta docking system, Bow & Stern Thrusters, Sleipner SPS 55 hull stabilizer unit with Vector Fin 0.8 metre, Duty Paid, Factory warranty in Place and Ready for immediate Delivery. Call today to schedule an appointment.

Основная информация

Тип судна: Моторная яхта

Подкатегория: Flybridge

Модельный год: 2016

Год постройки: 2016

Страна: United States

Верх: Hardtop

Открытая палуба мостика: Да

Размеры

Длина общая: 65' 0" (19.81m)

Ширина: 16' 10" (5.13m)

Мин. осадка: 5' 0" (1.52m)

Макс. осадка: 5' 3" (1.60m)

Скорость, вместимость и масса

Крейс. скорость: 26 Kts. (30 MPH)

Макс. скорость: 33 Kts. (38 MPH)

Водоизмещение: 77000 Pounds

Вместимость воды: 215 Gallons

Вместимость сточного бака: 36 Gallons

Объем топливного бака: 776 Gallons

Размещение

Всего кают: 4

Всего ком. состава: 3

Каюты экипажа: 1

Койки экипажа: 2

Спальных мест экипажа: 2

Комм. состав экипажа: 1

Корпус и палуба

Материал корпуса: Fiberglass

Информация о двигателе

Двигатели: 2

Производитель: MAN

Модель: V8 1200

Тип двигателя: Inboard

Тип топлива: Diesel

ПОДРОБНОЕ ОПИСАНИЕ

Features

Inside Equipment

- Stern Thruster
- Dishwasher
- Bow Thruster
- Washing Machine
- Electric Bilge Pump
- Microwave Oven
- Air Conditioning
- Heating
- Hot Water
- Fresh Water Maker
- Sea Water Pump
- Battery Charger

Electrical Equipment

- Shore Power Inlet
- Generator - 21.5 KW Onan 60 HZ

Option Upgrades

- **Twin MAN 1200s** in lieu of MAN 1000s
- **Hard-Top** in lieu of Bimini Top
- Camera monitoring and docking system - Stern view infrared dome camera, platform view infrared dome camera and two engine view infrared room cameras. Linked with multi switch to all Navigation displays.
- Crew Cabin fit out installation for Shaft drive boat
- Crew Cabin: Air Conditioning
- Crew Cabin: Splendide Washer/Dryer WDC7100XC
- Dimmer switches on overhead interior lighting
- Dinghy Inflator & socket 12 volt
- Exterior table covers required in Sunbrella Canvas Charcoal
- Exterior Teak tables to have a high gloss finish.
- Flybridge Cockpit Teak Decking
- Galley: Electrically operated starboard side opening window
- Galley: Miele Integrated Slimline Dishwasher G4580 SCVi
- Granite work top upgrade price from the standard Avonite for Galley and Guest en suites
- Interior Wood Finish - Black American Gloss Satin

- Lewmar 40Kg Delta Anchor - Stainless steel
- Master Cabin: Safe - 2 brick - with Digital lock
- Multi Alert Security and Monitoring System - Intruder, Fire, smoke, bilge flood, shore power loss, low battery, personal attack and MOB.
- PMX-SML70 Medium Tinted film to Main Deck side windows and sliding doors
- Preparation for future installation of a Water Maker
- **Sleipner SPS 55 hull stabiliser unit with Vector Fin 0.8 metre**
- Sprung mattress for beds in Guest Cabins

- Standard Radar Arch to be fitted

- **Stern Thruster - Sleipner SEP170/250TC-24V IP - 10.7hp**

- TV Shore cable inlet connection socket fitted at stern

- **U-Line Wine cooler fitted in the stairway**

- Underwater lights - Aqualuma LED wide angle x 4

- **Xenta Smart-stick docking system - dual station for Shaft drive boats**

- **Satellite TV system -**

- 12 X Additional Scatter Cushions

- 90 Metres of Galvanised 9.5mm anchor chain

- All exterior low level lighting to be BLUE in lieu of White including Aft Cockpit and Flybridge steps

USA Package (Includes the following options):

- Air Conditioning to tropical specification with second shore power inlet
- Glendinning Cable master - 1 x power feed and recovery AC shore power cable
- Bow Sunbathing Cushions with folding backrests
- Low level LED side deck lights 13 per side
- Marine Electric BBQ Grill
- Electric cooling unit for Fly bridge cool box
- Fly bridge Seats and Wet bar cover
- Fresh water deck wash system with outlets forward and aft including deck wash hose kit
- Water purifier for ice maker - General Ecology Nature Pure in-line system with spare cartridge
- Stern docking Capstan's fitted port and starboard
- Additional pair 12" Oval Mooring Cleats fitted to the aft lower edge of the hull band facing aft

- Teak table with folding top fitted on a polished stainless steel leg

Navigation Upgrade(Simrad Premium Package):

- Simrad NSS16 evo2 - 16" x two Multifunctional Colour Radar Chart plotter on Main Helm console
- Simrad NSS12 evo2 - 12" x two Colour repeater on Fly bridge console and GP25-GPS antenna with 6kw 51" open scanner
- Simrad Autopilot system with IS40 Display and QS80 control, dual station with AC12 Pilot computer
- Simrad IS40 colour Speed and Depth multifunctional displays x2 on the Main Helm console and x1 on the Fly bridge console with B744V fish finder transducer.
- Simrad RS90 VHF with DSC on Main Helm console with second station hand set at the Fly bridge console
- Simrad AISNAIS-400 Class-B with AIS
- Simrad Go-Free wireless bridge to control the NSS from your iPad or iPhone

Full AV Upgrade Package(Includes the following options):

- Samsung 46" LED Television in the saloon.
- Bose Lifestyle 535 5:1 Surround entertainment System with Pioneer Blu-ray player in the saloon.
- Cockpit zone performance audio upgrade with Four Sonance Extreme Speakers with Sonos Connect and amplifier.
- Flybridge zone performance audio upgrade with Four Sonance Extreme Speakers with Sonos Connect and amplifier and one Speakercraft Subwoofer.
- Fore deck zone performance audio upgrade with Two Bose removable Speakers with Sonos Connect amplifier.
- The zoning audio to be linked to the Saloon AV system via Sonos Connect with one iPad mini supplied for control of the zones through a SonosApp.
- Harmon Kardon Bluray/DVD/CD/Radio head unit with Stereo flush mount speakers and an Auxiliary HDMI socket linked to AV system for the Master cabin.
- Harmon Kardon Bluray/DVD/CD/Radio head unit with Stereo flush mount speakers and an Auxiliary HDMI socket linked to AV system for the Forward cabin.
- Fusion DVD/CD/Radio tuner linked to TV with stereo speakers with Bluetooth wireless connectivity for the starboard cabin
- Fusion DVD/CD/Radio tuner linked to TV with stereo speakers with Bluetooth wireless connectivity for the port cabin.

Construction

- Hand-laid GRP

- Gel coat including stripes
- Isophthalic polyester skin coat with
- powderbound mat
- Stitched multi-axial reinforced single-skin bottom
- Balsa-cored hull topsides and deck
- Hull stiffened with longitudinal stringers
- supported by transverse bulkheads and floors
- Antifouling

Deck

- Fittings all in stainless steel
- 8 deck cleats in stainless steel
- Delta anchor and 90m chain (**stainless steel**)
- Electric winch and capstan 24v with deck and cockpit controls 24v
- Stemhead roller and anchor stop
- Self-draining chain locker-fender stowage
- Pulpit and cockpit rails in stainless steel
- Stainless steel fendering with rubber insert
- IMCO navigation lights
- 3 pantograph wipers 24v, windscreen washers
- Ensign staff and socket
- 6 fenders and 4 warps
- Remote spotlight 24v
- Curved safety glass windscreen

Bathing Platform

- Fresh water marina connection
- Dockside AC shore power connection
- Hot and cold swimming shower
- Teak-laid bathing platform
- Foldaway stainless steel swimming ladder
- Hydraulic lifting platform

Aft Cockpit

- Self-draining
- Moulded staircase to flybridge
- Transom storage locker
- Upholstered seating

- Transom safety gates
- Engine room access hatch
- Overhead lighting 24v
- Low-level courtesy lighting 24v
- Two external marine speakers
- Teak-laid cockpit and steps
- Boat hook
- Hand-held fire extinguisher

Flybridge Helm Position

- Self-draining
- Deflecting front screen
- Hydraulic steering
- Chrome steering wheel
- Duplicate engine controls and instrumentation
- Compass
- Trim tab control
- Echo sounder and speedlog repeaters
- **Bow & stern thruster control**
- Autopilot and GPS navigator controls
- 12v socket
- Instrument cover
- Upholstered seating
- Storage below seats
- Cockpit table
- Sunbathing area forward
- Stainless steel guard rails and grab rails
- Glass holders
- Radio/iPod remote control
- Two external marine speakers
- Low-level courtesy lights

Salon

- Lower saloon seating port and starboard
- Coffee table
- Drinks cabinet
- Stainless steel sliding cockpit door to aft deck
- 48" 3D LED Samsung in lieu of 40"
- DVD/Blu-ray cinema sound system
- iPod radio for external speakers

- Overhead lighting 24v
- 2 x double AC socket
- Scatter cushions
- Quill Kohl Amtico Flooring

Dining

- Dining table
- Fixed upholstered outboard seating group
- Overhead lighting 24v
- Quill Kohl Amtico

Galley

- Sink and drainer
- Hot and cold water
- Electric refrigerator
- Electric freezer
- Ceramic hob
- Hob extractor fan
- Microwave combination oven
- Rubbish bin
- 6 place crockery set
- 6 place cutlery set
- Cupboard and drawer storage
- Double AC socket x 2
- Overhead lighting 24v
- Hand-held fire extinguisher
- First aid

Main Helm Console

- (2) Leather electric seats
- Console with burr walnut type fascia
- Hydraulic steering
- Leather rimmed chrome steering wheel
- Radar/Plotter
- Autopilot
- VHF radio dual station
- Analogue and digital engine instrumentation
- Electric speed and depth sounder

- Rudder indicator
- Compass
- Bow & stern thruster control
- Horn
- Windscreen wipers and washers
- Trim tab controls
- Cigar lighter 12v
- Main switch panel (AC/DC) with circuit breaker protection
- Opening helm side door
- Glass holders
- Hand-held fire extinguisher

Master Aft Cabin

- Double berth
- 2 reading lights 24v
- Bedside and outboard cupboards
- Settee
- Overhead lighting 24v
- Panoramic side windows with opening portholes and blinds
- Double AC socket x 2
- 40" LED Samsung in lieu of 32"
- Fitted carpet
- Walk-in hanging wardrobe with mirror
- Door to en suite toilet/shower

Master En Suite Shower Room

- Electric toilet
- Avonite counter top
- Mirrored vanity unit
- Washbasin and tap
- Hot and cold water
- Soap dispenser
- Toothbrush and glass holder
- Towel ring, towel rail and towels
- Separate shower compartment
- Extractor fan
- Overhead lighting 24v
- Opening porthole with mosquito screen and blind
- Shaver socket 240/110v

VIP Forward Stateroom

- Double berth
- Drawers and storage beneath
- Wardrobe
- Overhead lighting 24v
- 2 x reading lights 24v
- 2 x opening portholes with mosquito screens and blinds
- Deck hatch with screen
- Two double 240v AC sockets
- Television 32"
- Fitted carpet
- Door to en suite toilet/shower

Forward En Suite Shower Room and Toilet

- Electric toilet
- Avonite counter top
- Mirrored vanity unit
- Washbasin and tap
- Hot and cold water
- Soap dispenser
- Toothbrush and glass holder
- Towel ring, towel rail and towels
- Separate shower compartment
- Extractor fan
- Overhead lighting 24v
- Opening porthole with mosquito screen and blind
- Shaver socket 240/110v

Starboard Guest Cabin

- 2 single berths
- Bedside table with drawer
- 2 reading lights
- Under-berth stowage
- Full hanging mirrored wardrobe
- Overhead lighting 24v
- Opening porthole with mosquito screen and blind
- Double AC socket
- Door to en suite shower room
- Television 22"

- Fitted carpet
- Door to en suite toilet/shower

Starboard Guest Shower and Toilet/Day Head

- Electric toilet
- Avonite counter top
- Mirrored vanity unit
- Washbasin and tap
- Hot and cold water
- Soap dispenser
- Toothbrush and glass holder
- Towel ring, towel rail and towels
- Separate shower compartment
- Extractor fan
- Overhead lighting 24v
- Opening porthole with mosquito screen and blind
- Shaver socket 240/110v

Port Guest Cabin (with upper galley version only)

- 2 single Pullman berths
- Bedside table locker
- 2 reading lights
- Under-berth stowage
- Hanging mirrored wardrobe
- Overhead lighting 24v
- Opening porthole with mosquito screen and curtain
- Double AC socket
- Television 22"
- Fitted carpet

Engine Compartment and Ancillaries

- Soundproofing throughout
- Aluminium fuel tanks with electric sender units
- Fuel filters/water separators to engines
- Fuel filters/water separators to generators
- Automatic bilge and flood pumps with high-level alarms
- Generator exhaust silencers and water separators
- Engine exhaust dry risers and water injection

- Strainers to all raw water inlets
- Power steering – hydraulic control steering
- Trim tabs hydraulic control unit
- Air intakes fitted with emergency shutdown flaps (automatically operated)
- Air distribution fans (DC)
- Air extraction fans (DC) fitted with butterfly shutdown dampers
- Exhaust gas temperature sensor
- Engine room fire extinguishing system (FM200)

Electrical System

- Generator with underwater silent exhaust
- AC dockside connection
- Main DC and AC electrical circuits protected by re-settable circuit breakers
- Galvanic isolator
- 4 batteries for engine starting 24v circuit
- 6 batteries for domestic power 24v circuit
- 2 batteries for generator starting 12v circuit
- Battery coupling system
- Battery switches controlled from locker in cockpit
- Alternator split charging system
- Battery charger for 24v circuits
- Battery charger for 12v circuits
- Water heater
- Overhead lighting 24v
- AC electrical outlet sockets throughout the boat
- 24v hand light and cable

Underwater Gear

- Bow thruster – electric 24v
- Seawater strainers – nickel plated bronze
- Full cathodic bonding system to zinc anodes
- Hydraulic trim tabs – stainless steel
- Propeller shafts – Temet 25
- High performance rudders – AB2
- P-brackets – NAB nickel aluminium bronze c/w water lubricated bearing.
- Self-aligning shaft seal including spare seal
- 5-blade AB2 bronze propellers

Systems

- Hydraulic power steering
- Electric toilet system with integral macerator (24v)
- Toilets discharging overboard or to black water tank
- Black water tank discharging to dockside or overboard
- Aluminium fresh water tank with electric sending unit
- Aluminium fuel tank with electric sending unit
- Water pressure system (24v)
- Hot water tank with immersion heater (AC)
- Washbasins, showers and air conditioning units drain to sump box
- Sump box automatically discharging overboard
- Air conditioning system (reverse cycle) AC
- Bilge pumping system (24v)
- Manual/automatic fire extinguishing system combined with engines, generators and fans shutdown
- Auxiliary hydraulics for trim tabs (24v)

Miscellaneous

- Toolkit
- Boat hook
- Mooring ropes x 4
- Fenders x 6
- Spare bulbs and fuses
- 4 x towel sets

Исключения

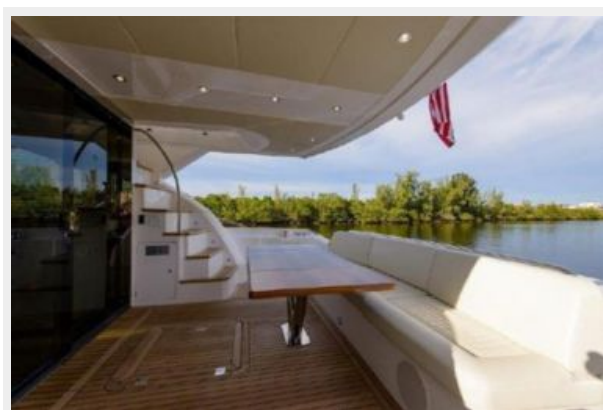
При продаже яхты исключаются личные вещи владельца.

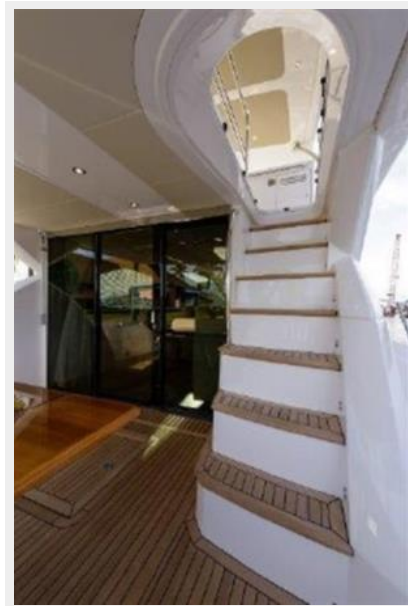
Отказ от ответственности

Компания предоставляет описание судна или яхты добросовестно, но не может гарантировать точность этой информации, а также не ручается за техническое состояние. Покупатель должен проинструктировать своих агентов или оценщиков исследовать представленную информацию более подробно, по собственному желанию. Продажа судна или яхты, изменение цены или снятие с продажи будет происходить без предварительного уведомления.

ФОТОГРАФИИ













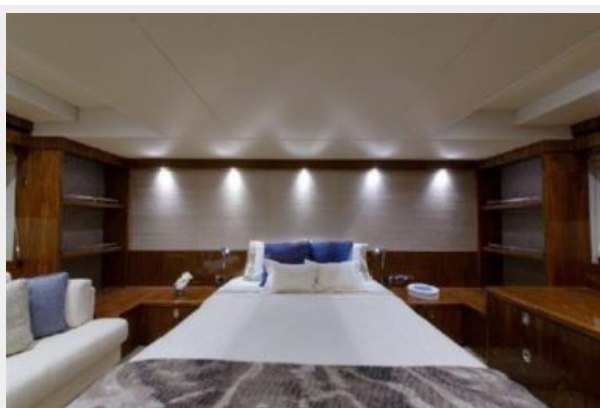




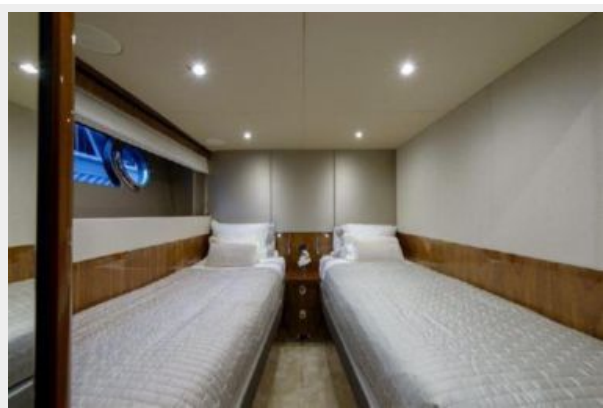






















КОНТАКТЫ

Андрей Шестаков (Andrey Shestakov) – ведущий яхтенный брокер отдела продаж яхт и судов компании Shestakov Yacht Sales Inc. Официальный представитель Shestakov Yacht Sales Inc. для русскоговорящих клиентов в центральном офисе компании в Майами/Форт Лодердейл/Флорида/США.

Контактная информация

Email: andrey@shestakovyachtsales.com

Web: shestakovyachtsales.com

Телефоны

Краснодарский край: **+7(918)465-66-44**

США, Майами, Флорида: **+1(954)274-4435**

Время работы

Понедельник – Суббота: **9:00 - 21:00**
EDT

Воскресенье: **Закрето**

Адрес



Harbour Towne Marina, 850 NE 3rd St,
STE 213, Dania, FL 33004