

PORTOFINO 48 — SUNSEEKER



Builder: SUNSEEKER

Year Built: 2013

Model: Cruiser

Price: PRICE ON APPLICATION

Location: United States

LOA: 48' 0" (14.63m)

Beam: 14' 1" (4.29m)

Max Draft: 4' 3" (1.30m)

Cruise Speed: 26 Kts. (30 MPH)

Max Speed: 30 Kts. (35 MPH)

Our experienced yacht broker, Andrey Shestakov, will help you choose and buy a yacht that best suits your needs **Portofino 48 — SUNSEEKER** from our catalogue. Presently, at Shestakov Yacht Sales Inc., we have a wide variety of yachts available on our sale's list. We also work in close contact with all the big yacht manufacturers from all over the world.

If you would like to buy a yacht **Portofino 48 — SUNSEEKER** or would like help answering any questions concerning purchasing, selling or chartering a yacht, please call **+1(954)274-4435**

TABLE OF CONTENTS

TABLE OF CONTENTS	2
SPECIFICATIONS	3
Overview	3
Basic Information	3
Dimensions	3
Speed, Capacities and Weight	3
Accommodations	3
Hull and Deck Information	4
Engine Information	4
DETAILED INFORMATION	5
Construction	5
Deck Equipment	5
Cockpit	5
Helm	6
Accommodations	6
Galley	7
Mechanical	7
Electrical Equipment	7
Exclusions	8
Disclaimer	8
PHOTOS	9
CONTACTS	14
Contact details	14
Telephones	14
Office hours	14
Address	14

SPECIFICATIONS

Overview

Stunning...handsome blue hull, retractable sunroof, 2/2 layout....A perfect cruiser

Basic Information

Category: Cruiser

Sub Category: Express

Model Year: 2013

Year Built: 2013

Country: United States

Vessel Top: Electronic Sunroof

Cockpit: Yes

Dimensions

LOA: 48' 0" (14.63m)

Beam: 14' 1" (4.29m)

Max Draft: 4' 3" (1.30m)

Speed, Capacities and Weight

Cruise Speed: 26 Kts. (30 MPH)

Max Speed: 30 Kts. (35 MPH)

Displacement: 36445 Pounds

Water Capacity: 85 Gallons

Fuel Capacity: 349 Gallons

Accommodations

Total Cabins: 2

Total Heads: 2

Hull and Deck Information

Hull Material: Fiberglass

Hull Configuration: Deep Vee

Engine Information

Engines: 2

Manufacturer: Volvo

Model: IPS

Engine Type: Inboard

Fuel Type: Diesel

DETAILED INFORMATION

Construction

- Hand-laid GRP
- Gel coat including stripes
- Vinylester skin coat w/powderbound mat
- Stitched multi-axial reinforced single skin bottom
- Balsa cored hull topsides
- PVC foam cored deck and superstructure
- Hull stiffened with longitudinal stringers supported by transverse bulkheads and floors
- Antifouling

Deck Equipment

- Lewmar 24v anchor winch and capstan w/deck and cockpit controls
- Stainless steel bow roller w/anchor stop
- Lewmar 16 kg delta anchor w/30m galvanized chain
- Fresh water deck wash system w/outlets fore & aft
- Fore deck sun pad w/folding backrests
- Fold-away swim ladder
- Teak-laid swim platform & steps
- Hot & cold swim shower
- Teak cockpit
- Hydraulic lift platform
- Roller recovery system for tender

Cockpit

- Teak cockpit sole, steps and swim platform
- Full wet bar with hot and cold water and cool-box
- Raritan icemaker w/water purifier
- Kenyon Marine electric BBQ grill
- Large U-settee w/teak folding table
- 2 x helm seats
- Co-pilot seating area
- Chart table
- Large Sun pad
- Overhead cockpit lights 12v
- Low-level cockpit lights 12v
- Sunbrella retractable awning

Helm

- Raymarine Navigation equipment
- Single lever controls
- Full analog engine instrumentation
- Fuel gauge
- Fresh water gauge
- Compass
- Horn
- Trim tab controls

Accommodations

Salon

- White oak interior
- U-settee w/ folding table
- Samsung 32" TV
- Harmon Kardon sound system
- DVD/Blueray/Radio
- AppleAirportExpress
- Radio/iPod with speakers for the cockpit
- Storage beneath seats
- Drinks cupboard
- Deck hatch

Master Full Beam Cabin

- Double berth w/storage below
- Hanging locker
- Drawer storage
- Large side windows and blinds
- Settee
- Carpet
- Samsung 32" TV
- DVD/CD/Radio with stereo speakers
- En suite head w/shower

Twin Forward cabin

- Two single V berths can convert to double
- Under-berth storage

- Hanging locker
- Storage cabinet
- Deck hatch
- Opening portholes
- 22" Samsung TV
- DVD/CD/Radio with stereo speakers
- Carpet
- En suite head w/shower

Galley

- Refrigerator/freezer
- 2 Burner electric cooktop
- Microwave oven
- Hot and cold water
- 6 place dinnerware & cutlery

Mechanical

- Twin Volvo IPS engines @900 hp each
- Sleipner bow thruster
- Soundproofing throughout
- Fuel filters/water separator to engines and generators
- FM200 manual/auto fire exit system
- Automatic bilge & flood pumps with high level alarms
- 24v Exhaust fan

Electrical Equipment

- 11.5kW 60hz Onan generator
- Tropical spec air conditioning
- Glendinning Cablemaster
- Underwater lights
- Galvanic isolator
- 24v DC electrical system w/full circuit breaker protection
- 4 x engine start-up batteries
- 4 x house batteries
- 2 x generator start-up batteries
- Alternator split charging system
- Battery charger

- Water heater

Exclusions

Owner's personal belongings.

Disclaimer

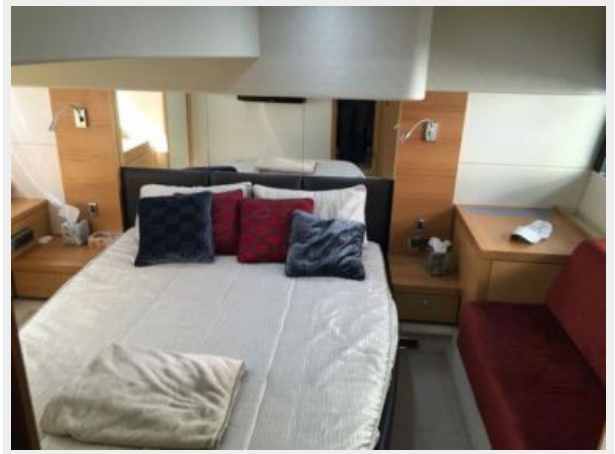
The Company offers the details of this vessel or yacht in good faith but cannot guarantee or warrant the accuracy of this information nor warrant the condition of the vessel. A buyer should instruct his representatives, agents, or his surveyors, to investigate such details as the buyer desires validated. This vessel or yacht is offered subject to prior sale, price change, or withdrawal without notice.

PHOTOS











CONTACTS

Andrey Shestakov, leading yacht broker of the sales department of Shestakov Yacht Sales Inc. Shestakov Yacht Sales Inc., the official representative of the Miami/Fort Lauderdale FL headquarters.

Contact details

Email: andrey@shestakovyachtsales.com

Web: shestakovyachtsales.com/en/

Telephones

USA: +1(954)274-4435

Office hours

Monday – Saturday: **9:00 - 21:00** EDT

Sunday: **closed**

Address



Harbour Towne Marina, 850 NE 3rd St,
STE 213, Dania, FL 33004