

## BROWN EYED GIRL — VIKING



**Builder:** VIKING

**Year Built:** 2014

**Model:** Sport Fisherman

**Price:** PRICE ON APPLICATION

**Location:** United States

**LOA:** 42' 0" (12.80m)

**Beam:** 15' 0" (4.57m)

**Max Draft:** 3' 5" (1.04m)

Our experienced yacht broker, Andrey Shestakov, will help you choose and buy a yacht that best suits your needs **Brown Eyed Girl — VIKING** from our catalogue. Presently, at Shestakov Yacht Sales Inc., we have a wide variety of yachts available on our sale's list. We also work in close contact with all the big yacht manufacturers from all over the world.

If you would like to buy a yacht **Brown Eyed Girl — VIKING** or would like help answering any questions concerning purchasing, selling or chartering a yacht, please call **+1(954)274-4435**

# TABLE OF CONTENTS

TABLE OF CONTENTS	2
SPECIFICATIONS	5
Basic Information	5
Dimensions	5
Speed, Capacities and Weight	5
Accommodations	5
Hull and Deck Information	5
Engine Information	5
DETAILED INFORMATION	6
Accommodations	6
Salon	6
Galley	6
Master Stateroom	6
Guest Stateroom	7
Head	7
Helm Deck	7
Electronics	8
Palm Beach Towers Tuna Tower	8
Cockpit	9
Deck/Hull	9
Engine Room	10
Remarks	10
Exclusions	10
Disclaimer	10
PHOTOS	12
Salon	12
Salon	12
Salon	12

---

Salon	12
Galley	13
Galley	13
Master Stateroom	13
Master Stateroom	13
Master Stateroom	14
Master Stateroom	14
Guest Stateroom	14
Guest Stateroom	14
Head	15
Head	15
Helm Deck	15
Helm Deck	15
Helm Deck	16
Helm Deck	16
Helm Deck	16
Helm Deck	16
Cockpit	17
Cockpit	17
Cockpit	17
Cockpit	17
Cockpit	18
Cockpit	18
Cockpit	18
Engine Room	18
Engine Room	19
Engine Room	19
Engine Room	19
Engine Room	19

---

---

Brown Eyed Girl	20
Brown Eyed Girl	20
Brown Eyed Girl	20
Brown Eyed Girl	20
Brown Eyed Girl	21
Brown Eyed Girl	21
CONTACTS	22
Contact details	22
Telephones	22
Office hours	22
Address	22

---

# SPECIFICATIONS

---

## Basic Information

---

**Category:** Sport Fisherman

**Model Year:** 2014

**Year Built:** 2014

**Country:** United States

## Dimensions

---

**LOA:** 42' 0" (12.80m)

**Beam:** 15' 0" (4.57m)

**Max Draft:** 3' 5" (1.04m)

## Speed, Capacities and Weight

---

**Displacement:** 32699 Pounds

**Water Capacity:** 120 Gallons

**Holding Tank:** 39 Gallons

**Fuel Capacity:** 525 Gallons

## Accommodations

---

**Total Cabins:** 2

## Hull and Deck Information

---

**Hull Material:** Fiberglass

## Engine Information

---

**Engines:** 2

**Manufacturer:** Cummins

**Model:** QSC-600 Zeus Drive

**Engine Type:** Inboard

**Fuel Type:** Diesel

---

# DETAILED INFORMATION

---

## Accommodations

---

Brown Eyed Girl features a two stateroom one head layout. Master is forward with centerline queen berth and guest cabin is aft with side by side berths. The dinette converts to a single berth as well.

## Salon

---

- High gloss teak interior
- Teak & Holly Amtico sole
- Recessed overhead LED lighting
- Main electrical panel
- Flush mounted stereo speakers in overhead
- 4 person convertible dinette, converts to a bunk
- Teak dinette table
- Teak treads on staircase
- Samsun 22" HD TV
- Stereo system
- Freshwater gauge
- Central vac system

## Galley

---

- Teak & Holly Amtico sole
- Polished Corian countertops
- Flush mounted LED lighting
- Sharp microwave convection oven
- Kenyon 2 burner cooktop
- Exhaust fan
- Under counter refrigerator and freezer
- Abundant of storage above and below

## Master Stateroom

---

- Centerline queen berth with storage below
- 2 additional drawers below berth
- Flush mounted LED lighting with dimmer control
- Teak shelf storage outboard, port and starboard
- Overhead hatch with screen and shade

- Quilted bedspread and pillow shams
- Reading lights
- Flat screen HD TV
- CD/DVD player
- Reverse cycle A/C and heat
- Hanging locker
- Private access to head

---

## Guest Stateroom

---

- Side by Side twin berths
- Teak credenza with drawer storage
- Reading lamps
- Quilted bedspread and pillow shams
- Flush mounted LED lighting with dimmer control
- Reverse cycle AC/heat
- Hanging locker
- Flush mounted stereo speakers

---

## Head

---

- Polished Corian counter tops
- Teak & Holly Amtico sole
- Undermount sink
- Storage below sink
- Stall shower
- LED lighting
- Exhaust vent
- Mirrored medicine cabinet
- Linen locker

---

## Helm Deck

---

Sport Tower molded hardtop with 3 sided windshield. Centerline helm console with excellent use of space for all electronics.

- Teak helm pod
- single lever controls
- Joy stick control
- Polished stainless wheel and controls

- Port and Starboard additional electronics storage area
- 3 upgraded Release Marine teak helm chairs with stainless pedestals
- Center chair teak foot rest
- Custom oversized rod storage lockers, port and starboard
- Custom overhead hatches in hardtop
- Costa Clear aft enclosure
- Port and Starboard bench seats with storage
- Upgraded fabric on all helm chairs and bridge cushions
- Drip Dry foam used in all cushions
- Molded in overhead lighting in hardtop
- Center windshield wiper with washer
- Helm deck air conditioning/heating
- Refrigerated drink box
- Bound carpet inlay throughout
- Flush mounted centerline compass
- Engine room access hatch

## Electronics

**Radar** Garmin GPSMAP8215, 15" TS MFD preloaded with coastal charts Garmin 1206-XHD radar, 12KW with 6' array **Plotter** Garmin GPSMAP8215, 15" TS MFD preloaded with coastal charts Garmin remote input device, grid Garmin GNT 10 N2K transceiver Garmin WiFi adapter for bluechart mobile **Network** Garmin GMS10 network expander Garmin GXM52 weather antenna (2) Garmin 40' network cable **Sounder** Garmin GSD-26 sounder Airmar B265LH transducer **Digital Depth/Temp** Furuno RD33 data organizer & display Furuno 235DHTLMSA Hi-Prectmp2 transducer **VHF** Icom IC-504 VHF radio (2) Icom MB75 VHF flush mount kit (2) Shakespeare 5018 17.5" VHF antenna (2) AME tower/hardtop Rupp mount pack **Camera** Gost PM-mini IR ball camera, engine room 3V dual comp VID amp 2 in 3 our amp **Thermal Imaging** FLIR MD-625 w/JCU FLIR MD series hardtop mount **Spotlight** ACR RCL100, 24V spotlight with remote control pad **SAT TV** Tracvision M5G Triamericas LNB **TOWER** Garmin GPSMAP5208 8.4" touchscreen Furuno RD33 data organizer & display Icom HM-162 VHF command mic

## Palm Beach Towers Tuna Tower

- Tuna tower with 4' gap and brushed pipe
- 60' control box with molded in compass
- One piece molded standing platform and hardtop
- Tower sunshade with welded antenna mounts
- Molded Sat TV dome mount
- Bench seat with back rest
- Molded in navigation lights
- Main engine steering and controls



- Molded in spreader lights, LED
- 6 rod, aft rail rocket launcher
- Rod holders welded on tower legs
- Miya Epoch US#9 teaser reels with remotes
- Rupp outriggers
- Rupp center rigger

## Cockpit

---

- Mezzanine seating
- Custom tackle storage locker with rigging station
- Custom Bluewater teak fighting chair with teak rocket launcher and rigging tray
- Custom transom livewell with window and light
- Custom under gunnel gaff storage tubes
- Transom door with flip up gate lid
- Costa Clear canvas bulkhead with custom handles for easy access
- Transom box features custom removable tuna tubes with additional sea water pump
- Additional fitting for on deck livewell
- Port and starboard in floor fish boxes, insulated
- All deck hatches have upgraded stainless gas piston supports
- 12 and 24 volt under gunnel outlets
- Eskimo ice machine plumbed to fishbox
- Clearing rod holders on tower legs
- Overhead rocket launcher
- Molded in overhead and under gunnel lighting
- Flush mounted swivel rod holders mounted in gunnels
- Mezzanine and tackle center operated hydraulically for engine room access
- Fresh and salt water washdown

## Deck/Hull

---

- Viking hardtop with molded in integral windshield
- Palm Beach Towers custom tuna tower
- Custom overhead extra deep rod storage lockers
- Snow White hull and topside gelcoat
- Aluminum bow rail
- Lewmar V2 windlass
- Fortress anchor with rode and chain
- Bow pulpit
- Custom hand rails on house sides, powder coated
- Molded in navigational lights
- Walkthrough transom door with flip up gate
- 5 underwater lights

---

## Engine Room

---

- Upgraded Cummins QSC 600hp engines with Zues drives
- Cummins extended warranty in place until March 2020
- Serviced by Cummins dealer and are completely up to date
- Kilo Pak upgraded generator
- Eskimo ice machine
- Sea Recovery watermaker
- Plumbed oil change system
- Awlgripped engine room
- Fire suppression system
- Fuel priming pumps
- Exhaust relief system
- Trolling valve function
- Clear air engine room intake system
- Hydraulic power steering
- Engine room camera
- Bilge pumps with high water alarm system
- 2 Automatic battery chargers
- Charles Iso boost transformer
- Racor primary fuel filters
- Hot water heater
- Custom additional livewell/tuna tube pump

---

## Remarks

---

Brown Eyed Girl is a one owner 2014/2014 custom built 42' Viking Sport Tower. She will satisfy the most discriminating buyer with her condition and options, compare her to a new 42. Cummins Extended Warranty in place until March 2020. Priced well below replacement, seller is moving up.

---

## Exclusions

---

Owner's personal belongings.

---

## Disclaimer

---

The Company offers the details of this vessel or yacht in good faith but cannot guarantee or warrant the accuracy of this information nor warrant the condition of the vessel. A buyer should instruct his representatives, agents, or his surveyors, to investigate such details as the buyer

desires validated. This vessel or yacht is offered subject to prior sale, price change, or withdrawal without notice.

# PHOTOS

Salon



Salon



Salon



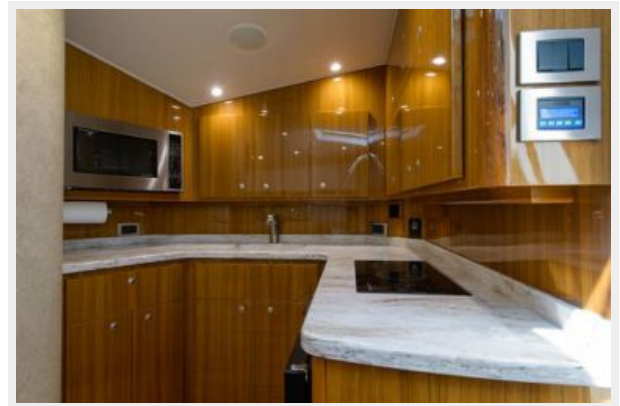
Salon



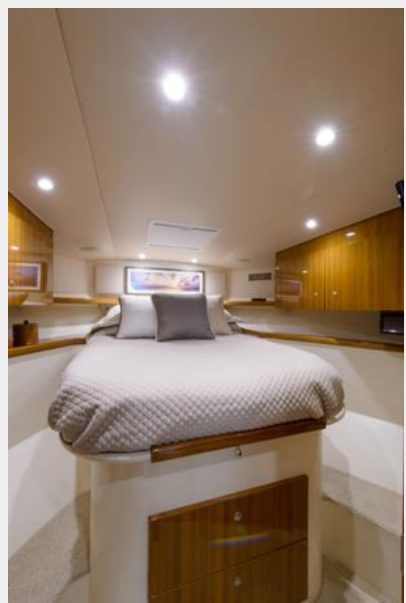
**Galley**



**Galley**



**Master Stateroom**



**Master Stateroom**



**Master Stateroom**



**Master Stateroom**



**Guest Stateroom**



**Guest Stateroom**



Head



Head



Helm Deck



Helm Deck



Helm Deck



Helm Deck



Helm Deck



Helm Deck





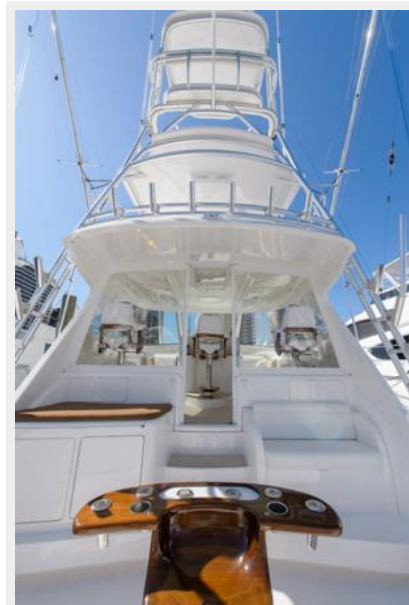
Cockpit



Cockpit



Cockpit



Cockpit



Cockpit



Cockpit



Cockpit



Engine Room



**Engine Room**



**Engine Room**



**Engine Room**



**Engine Room**



**Brown Eyed Girl**



**Brown Eyed Girl**



**Brown Eyed Girl**



**Brown Eyed Girl**



## Brown Eyed Girl



## Brown Eyed Girl



---

# CONTACTS

---

Andrey Shestakov, leading yacht broker of the sales department of Shestakov Yacht Sales Inc. Shestakov Yacht Sales Inc., the official representative of the Miami/Fort Lauderdale FL headquarters.

---

## Contact details

---

Email: [andrey@shestakovyachtsales.com](mailto:andrey@shestakovyachtsales.com)

Web: [shestakovyachtsales.com/en/](http://shestakovyachtsales.com/en/)

---

## Telephones

---

USA: +1(954)274-4435

---

## Office hours

---

Monday – Saturday: **9:00 - 21:00** EDT

Sunday: **closed**

---

## Address

---



Harbour Towne Marina, 850 NE 3rd St,  
STE 213, Dania, FL 33004