

BROWN EYED GIRL — VIKING



Судостроитель: VIKING

Год постройки: 2014

Модель: Катер для спортивной рыбалки

Цена: **ЦЕНА ЯХТЫ ПО ЗАПРОСУ**

Местонахождение: United States

Длина общая: 42' 0" (12.80m)

Ширина: 15' 0" (4.57m)

Макс. осадка: 3' 5" (1.04m)

Купить **Brown Eyed Girl — VIKING** а также выбрать подходящую вам яхту из нашего каталога яхт вам поможет опытный яхтенный брокер Андрей Шестаков. На сегодняшний день компания **Shestakov Yacht Sales Inc.** имеет большое количество яхт в собственном списке продаж, а также тесно сотрудничает со всеми крупными яхтенными производителями по всему миру.

Для того чтобы купить яхту **Brown Eyed Girl — VIKING** а также проконсультироваться по любому вопросу связанному с покупкой, продажей, чартером яхт позвоните по телефону **+7(918)465-66-44**.

ОГЛАВЛЕНИЕ

ОГЛАВЛЕНИЕ	2
ХАРАКТЕРИСТИКИ	5
Основная информация	5
Размеры	5
Скорость, вместимость и масса	5
Размещение	5
Корпус и палуба	5
Информация о двигателе	6
ПОДРОБНОЕ ОПИСАНИЕ	7
Accommodations	7
Salon	7
Galley	7
Master Stateroom	7
Guest Stateroom	8
Head	8
Helm Deck	8
Electronics	9
Palm Beach Towers Tuna Tower	9
Cockpit	10
Deck/Hull	10
Engine Room	11
Remarks	11
Исключения	11
Отказ от ответственности	11
ФОТОГРАФИИ	13
Salon	13
Salon	13
Salon	13

Salon	13
Galley	14
Galley	14
Master Stateroom	14
Master Stateroom	14
Master Stateroom	15
Master Stateroom	15
Guest Stateroom	15
Guest Stateroom	15
Head	16
Head	16
Helm Deck	16
Helm Deck	16
Helm Deck	17
Helm Deck	17
Helm Deck	17
Helm Deck	17
Helm Deck	17
Cockpit	18
Cockpit	18
Cockpit	18
Cockpit	18
Cockpit	19
Cockpit	19
Cockpit	19
Engine Room	19
Engine Room	20
Engine Room	20
Engine Room	20
Engine Room	20

Brown Eyed Girl	21
Brown Eyed Girl	21
Brown Eyed Girl	21
Brown Eyed Girl	21
Brown Eyed Girl	22
Brown Eyed Girl	22
КОНТАКТЫ	23
Контактная информация	23
Телефоны	23
Время работы	23
Адрес	23

ХАРАКТЕРИСТИКИ

Основная информация

Тип судна: Катер для спортивной рыбалки

Модельный год: 2014

Год постройки: 2014

Страна: United States

Размеры

Длина общая: 42' 0" (12.80m)

Ширина: 15' 0" (4.57m)

Макс. осадка: 3' 5" (1.04m)

Скорость, вместимость и масса

Водоизмещение: 32699 Pounds

Вместимость воды: 120 Gallons

Вместимость сточного бака: 39 Gallons

Объем топливного бака: 525 Gallons

Размещение

Всего кают: 2

Корпус и палуба

Материал корпуса: Fiberglass

Информация о двигателе

Двигатели: 2

Производитель: Cummins

Модель: QSC-600 Zeus Drive

Тип двигателя: Inboard

Тип топлива: Diesel

ПОДРОБНОЕ ОПИСАНИЕ

Accommodations

Brown Eyed Girl features a two stateroom one head layout. Master is forward with centerline queen berth and guest cabin is aft with side by side berths. The dinette converts to a single berth as well.

Salon

- High gloss teak interior
- Teak & Holly Amtico sole
- Recessed overhead LED lighting
- Main electrical panel
- Flush mounted stereo speakers in overhead
- 4 person convertible dinette, converts to a bunk
- Teak dinette table
- Teak treads on staircase
- Samsun 22" HD TV
- Stereo system
- Freshwater gauge
- Central vac system

Galley

- Teak & Holly Amtico sole
- Polished Corian countertops
- Flush mounted LED lighting
- Sharp microwave convection oven
- Kenyon 2 burner cooktop
- Exhaust fan
- Under counter refrigerator and freezer
- Abundant of storage above and below

Master Stateroom

- Centerline queen berth with storage below
- 2 additional drawers below berth
- Flush mounted LED lighting with dimmer control
- Teak shelf storage outboard, port and starboard
- Overhead hatch with screen and shade

- Quilted bedspread and pillow shams
- Reading lights
- Flat screen HD TV
- CD/DVD player
- Reverse cycle A/C and heat
- Hanging locker
- Private access to head

Guest Stateroom

- Side by Side twin berths
- Teak credenza with drawer storage
- Reading lamps
- Quilted bedspread and pillow shams
- Flush mounted LED lighting with dimmer control
- Reverse cycle AC/heat
- Hanging locker
- Flush mounted stereo speakers

Head

- Polished Corian counter tops
- Teak & Holly Amtico sole
- Undermount sink
- Storage below sink
- Stall shower
- LED lighting
- Exhaust vent
- Mirrored medicine cabinet
- Linen locker

Helm Deck

Sport Tower molded hardtop with 3 sided windshield. Centerline helm console with excellent use of space for all electronics.

- Teak helm pod
- single lever controls
- Joy stick control
- Polished stainless wheel and controls

- Port and Starboard additional electronics storage area
- 3 upgraded Release Marine teak helm chairs with stainless pedestals
- Center chair teak foot rest
- Custom oversized rod storage lockers, port and starboard
- Custom overhead hatches in hardtop
- Costa Clear aft enclosure
- Port and Starboard bench seats with storage
- Upgraded fabric on all helm chairs and bridge cushions
- Drip Dry foam used in all cushions
- Molded in overhead lighting in hardtop
- Center windshield wiper with washer
- Helm deck air conditioning/heating
- Refrigerated drink box
- Bound carpet inlay throughout
- Flush mounted centerline compass
- Engine room access hatch

Electronics

Radar Garmin GPSMAP8215, 15" TS MFD preloaded with coastal charts Garmin 1206-XHD radar, 12KW with 6' array **Plotter** Garmin GPSMAP8215, 15" TS MFD preloaded with coastal charts Garmin remote input device, grid Garmin GNT 10 N2K transceiver Garmin WiFi adapter for bluechart mobile **Network** Garmin GMS10 network expander Garmin GXM52 weather antenna (2) Garmin 40' network cable **Sounder** Garmin GSD-26 sounder Airmar B265LH transducer **Digital Depth/Temp** Furuno RD33 data organizer & display Furuno 235DHTLMSA Hi-Prectmp2 transducer **VHF** Icom IC-504 VHF radio (2) Icom MB75 VHF flush mount kit (2) Shakespeare 5018 17.5" VHF antenna (2) AME tower/hardtop Rupp mount pack **Camera** Gost PM-mini IR ball camera, engine room 3V dual comp VID amp 2 in 3 our amp **Thermal Imaging** FLIR MD-625 w/JCU FLIR MD series hardtop mount **Spotlight** ACR RCL100, 24V spotlight with remote control pad **SAT TV** Tracvision M5G Triamericas LNB **TOWER** Garmin GPSMAP5208 8.4" touchscreen Furuno RD33 data organizer & display Icom HM-162 VHF command mic

Palm Beach Towers Tuna Tower

- Tuna tower with 4' gap and brushed pipe
- 60' control box with molded in compass
- One piece molded standing platform and hardtop
- Tower sunshade with welded antenna mounts
- Molded Sat TV dome mount
- Bench seat with back rest
- Molded in navigation lights
- Main engine steering and controls

- Molded in spreader lights, LED
- 6 rod, aft rail rocket launcher
- Rod holders welded on tower legs
- Miya Epoch US#9 teaser reels with remotes
- Rupp outriggers
- Rupp center rigger

Cockpit

- Mezzanine seating
- Custom tackle storage locker with rigging station
- Custom Bluewater teak fighting chair with teak rocket launcher and rigging tray
- Custom transom livewell with window and light
- Custom under gunnel gaff storage tubes
- Transom door with flip up gate lid
- Costa Clear canvas bulkhead with custom handles for easy access
- Transom box features custom removable tuna tubes with additional sea water pump
- Additional fitting for on deck livewell
- Port and starboard in floor fish boxes, insulated
- All deck hatches have upgraded stainless gas piston supports
- 12 and 24 volt under gunnel outlets
- Eskimo ice machine plumbed to fishbox
- Clearing rod holders on tower legs
- Overhead rocket launcher
- Molded in overhead and under gunnel lighting
- Flush mounted swivel rod holders mounted in gunnels
- Mezzanine and tackle center operated hydraulically for engine room access
- Fresh and salt water washdown

Deck/Hull

- Viking hardtop with molded in integral windshield
- Palm Beach Towers custom tuna tower
- Custom overhead extra deep rod storage lockers
- Snow White hull and topside gelcoat
- Aluminum bow rail
- Lewmar V2 windlass
- Fortress anchor with rode and chain
- Bow pulpit
- Custom hand rails on house sides, powder coated
- Molded in navigational lights
- Walkthrough transom door with flip up gate
- 5 underwater lights

Engine Room

- Upgraded Cummins QSC 600hp engines with Zues drives
- Cummins extended warranty in place until March 2020
- Serviced by Cummins dealer and are completely up to date
- Kilo Pak upgraded generator
- Eskimo ice machine
- Sea Recovery watermaker
- Plumbed oil change system
- Awlgripped engine room
- Fire suppression system
- Fuel priming pumps
- Exhaust relief system
- Trolling valve function
- Clear air engine room intake system
- Hydraulic power steering
- Engine room camera
- Bilge pumps with high water alarm system
- 2 Automatic battery chargers
- Charles Iso boost transformer
- Racor primary fuel filters
- Hot water heater
- Custom additional livewell/tuna tube pump

Remarks

Brown Eyed Girl is a one owner 2014/2014 custom built 42' Viking Sport Tower. She will satisfy the most discriminating buyer with her condition and options, compare her to a new 42. Cummins Extended Warranty in place until March 2020. Priced well below replacement, seller is moving up.

Исключения

При продаже яхты исключаются личные вещи владельца.

Отказ от ответственности

Компания предоставляет описание судна или яхты добросовестно, но не может гарантировать точность этой информации, а также не ручается за техническое состояние. Покупатель должен проинструктировать своих агентов или оценщиков

исследовать представленную информацию более подробно, по собственному желанию. Продажа судна или яхты, изменение цены или снятие с продажи будет происходить без предварительного уведомления.

ФОТОГРАФИИ

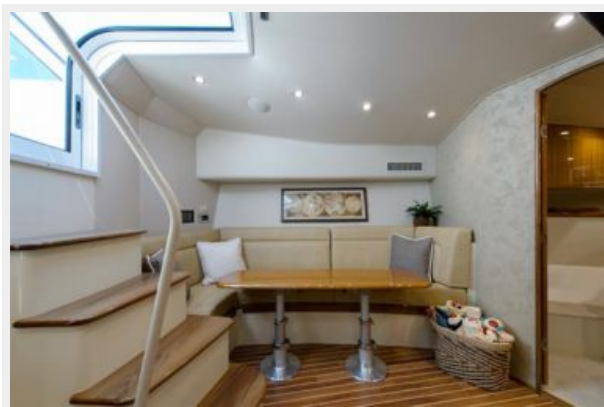
Salon



Salon



Salon



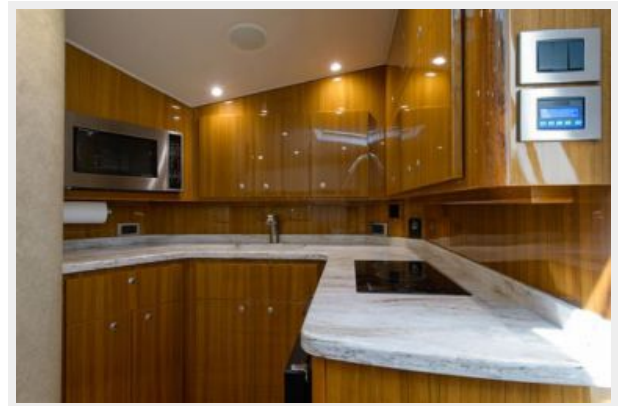
Salon



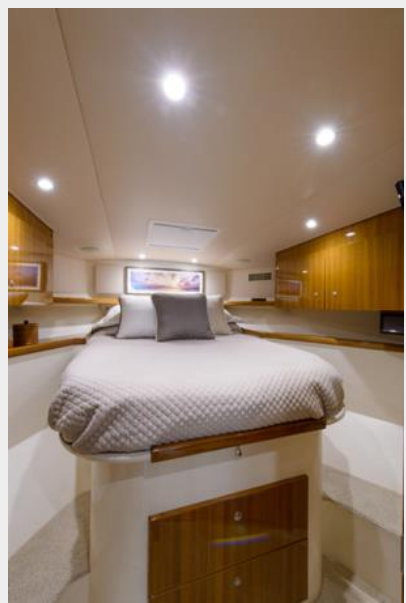
Galley



Galley



Master Stateroom



Master Stateroom



Master Stateroom



Master Stateroom



Guest Stateroom



Guest Stateroom



Head



Head



Helm Deck



Helm Deck



Helm Deck



Helm Deck



Helm Deck



Helm Deck



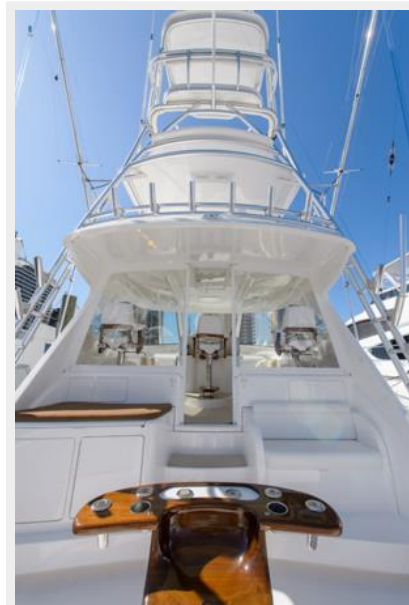
Скокпит



Скокпит



Скокпит



Скокпит



Cockpit



Cockpit



Cockpit



Engine Room



Engine Room



Engine Room



Engine Room



Engine Room



Brown Eyed Girl



Brown Eyed Girl



Brown Eyed Girl



Brown Eyed Girl



Brown Eyed Girl



Brown Eyed Girl



КОНТАКТЫ

Андрей Шестаков (Andrey Shestakov) – ведущий яхтенный брокер отдела продаж яхт и судов компании Shestakov Yacht Sales Inc. Официальный представитель Shestakov Yacht Sales Inc. для русскоговорящих клиентов в центральном офисе компании в Майами/Форт Лодердейл/Флорида/США.

Контактная информация

Email: andrey@shestakovyachtsales.com

Web: shestakovyachtsales.com

Телефоны

Краснодарский край: **+7(918)465-66-44**

США, Майами, Флорида: **+1(954)274-4435**

Время работы

Понедельник – Суббота: **9:00 - 21:00**
EDT

Воскресенье: **Закрито**

Адрес



Harbour Towne Marina, 850 NE 3rd St,
STE 213, Dania, FL 33004