

## 112-1 — OCEAN ALEXANDER



**Судостроитель:** OCEAN ALEXANDER

**Год постройки:** 2016

**Модель:** Моторная яхта

**Цена:** ЦЕНА ЯХТЫ ПО ЗАПРОСУ

**Местонахождение:** United States

**Длина общая:** 112' 0" (34.14m)

**Ширина:** 23' 5" (7.14m)

**Мин. осадка:** 6' 0" (1.83m)

Купить 112-1 — OCEAN ALEXANDER а также выбрать подходящую вам яхту из нашего каталога яхт вам поможет опытный яхтенный брокер Андрей Шестаков. На сегодняшний день компания Shestakov Yacht Sales Inc. имеет большое количество яхт в собственном списке продаж, а также тесно сотрудничает со всеми крупными яхтенными производителями по всему миру.

Для того чтобы купить яхту 112-1 — OCEAN ALEXANDER а также проконсультироваться по любому вопросу связанному с покупкой, продажей, чартером яхт позвоните по телефону **+7(918)465-66-44**.

# ОГЛАВЛЕНИЕ

ОГЛАВЛЕНИЕ	2
ХАРАКТЕРИСТИКИ	5
Основная информация	5
Размеры	5
Скорость, вместимость и масса	5
Размещение	5
Корпус и палуба	5
Информация о двигателе	6
ПОДРОБНОЕ ОПИСАНИЕ	7
Accommodations	7
Construction	13
Mechanical	15
Plumbing	17
Electrical	18
Исключения	21
Отказ от ответственности	22
ФОТОГРАФИИ	23
Aft Deck	23
Salon	23
Salon - TV	23
Salon	23
Salon Stairway	23
Formal Dining	23
Galley	23
Galley	23
Skylounge	24
Skylounge	24
Skylounge Helm	24

Skylounge Helm	24
Master Stateroom	24
Master Stateroom	24
Master Stateroom	24
Master Stateroom	24
Master Stateroom Closet	25
Master Head	25
Master Head	25
VIP Stateroom - 1	25
VIP Head	25
VIP Stateroom - 2	25
VIP Head	25
Guest Stateroom - 1	25
Guest Head	26
Guest Stateroom - 2	26
Guest Head	26
Crew Quarters	26
Captain Cabin	26
Crew Cabin	26
Crew Cabin	26
Flybridge	26
Flybridge	27
Flybridge	27
Upper Deck	27
Engine Room	27
<b>КОНТАКТЫ</b>	<b>28</b>
Контактная информация	28
Телефоны	28
Время работы	28

---

Адрес

28

# ХАРАКТЕРИСТИКИ

## Основная информация

Тип судна: Моторная яхта

Подкатегория: Tri-Deck

Модельный год: 2016

Год постройки: 2016

Страна: United States

## Размеры

Длина общая: 112' 0" (34.14m)

Ширина: 23' 5" (7.14m)

Мин. осадка: 6' 0" (1.83m)

## Скорость, вместимость и масса

Водоизмещение: 317900 Pounds

Вместимость воды: 1060 Gallons

Вместимость сточного бака: 540 Gallons Объем топливного бака: 5500 Gallons

## Размещение

Всего кают: 5

Всего ком. состава: 8

Каюта капитана: Да

Каюты экипажа: 3

Комм. состав экипажа: 2

## Корпус и палуба

Материал корпуса: Fiberglass

Дизайнер интерьера: Evan Marshall

## Информация о двигателе

---

**Двигатели:** 2

**Производитель:** MTU

**Модель:** 16V2000 M94

**Тип двигателя:** Inboard

**Тип топлива:** Diesel

---

# ПОДРОБНОЕ ОПИСАНИЕ

---

## Accommodations

---

### ***Master Stateroom:***

- Surround room hinge down LCD 48" TV w/ cabinet on starboard side
- One Subwoofer
- "Floating" King-sized innerspring mattress berth
- Two "floating" nightstands with granite or marble countertops
- Vanity/ Computer table on starboard w/ flip-up mirror and lights
- Privacy locksets
- Cushioned reading settee and fixed coffee table at port
- A night head, at port, with sink/cabinet
- Separate Bath area
- Heated granite floors in Master bathroom
- Two (2) Vessel Sinks and wood base cabinet, lockers and drawer below with satin finish, w/mirrors above, and Marble top
- Custom large shower, fitted with tempered glass enclosure with securing device, door will be s/s hinge
- Kohler® Jacuzzi tub forward
- Shower and tub are surround by the marble
- Locker both side of Tub
- HVAC
- Ocean Air blinds

### ***Skylounge:***

- Surround room with LCD 60" TV
- Uline® refrigerator under counter
- Uline® Ice maker under counter
- S/S Handrail on carpeted staircase
- Day head for Skylounge layout
- Full height windows and electric glass sliding double paned door on aft bulkhead as per plans
- Built-in custom settee couch
- Tinted windows
- HVAC
- Electric blinds

**Salon:**

- Surround room Hinge down LCD 60" TV w/ cabinet on starboard side
- Furman power conditioner (featuring multi-stage linear amplifier tech & extreme voltage shutdown for yacht's unstable shore/gen set power)
- One Subwoofer
- Walnut Wood paneling and cabinetry
- Ceiling feature in Majilite
- Granite countertop at wet bar
- Two large paned electric sliding glass door on aft bulkhead as per plans
- HVAC
- Electric blinds

**Dining Room:**

- Room divider cabinet, fitted out for storage
- Pegs and dividers be installed for china, glass and silver storage
- Four paned, electric double sliding S/S door, portside
- Ten-person dining table, secured w/ chairs
- Coffered ceiling feature
- Bar with sink
- Uline® Drawer refrigerator under counter
- Sub Zero® Wine cooler under counter
- Day head with sink and cabinet
- Closet for outdoor cloths
- HVAC

**Galley:**

- Four Speakers with Stereo room 32" TV
- Wood panel and cabinetry
- Galley storage cabinetry w/hidden hinges
- Granite countertops
- Wood floor in galley
- Blanco® S/S kitchen Sink



- Vent a Hood®, wall mount range hood with Fire damper and Fire Suppression
- Overhead dish locker
- Wolf® 36" induction cook top
- Wolf® 36" electric oven
- Sub-Zero® 36" built-in over and under Refrigerator/ freezer
- GE® trash compactor
- Wolf® Microwave with trim kit
- ASKO® dishwasher
- Sub Zero® ice maker
- In-Sinkerator® instant hot water dispensers
- HVAC
- Electric blinds

### ***Pilothouse:***

- (1) Electric Stidd® helm seats, Admirals series
- Wood and padded leather control console with steering, engine controls and electronic instruments
- Ship's alarm panel for fire, smoke, bilge, and tank monitoring
- Ship's phone outlets for computer and fax
- Red light for nighttime running
- Navigation area/ship's office with file drawers, bookcases, etc.
- Forward windows with five windshield wipers with freshwater nozzles
- P/S hinged doors to exterior bridge deck, flush in house side
- HVAC

### ***P/S VIP Guest Staterooms:***

- Stereo room with 32" LCD TV and video player
- Queen-size berth with innerspring mattress and storage
- Headboard finish in upholstered fabric per interior designer's spec
- Nightstands with drawers
- Vanity/ Dressing table w/ flip-up mirror
- Nook sofa built-in with cushion
- Privacy locksets
- Vanity with vessel sink having cabinet below and mirror above
- Head flooring with Marble
- Shower and floor surround to be faced in stone per selected option, fitted with tempered

glass enclosure with securing device

- HVAC

### ***P/S Guest Staterooms:***

- Stereo room with 32" LCD TV and video player
- Audio stereo and video system
- Two single-sized berths w/ innerspring mattress and drawer below
- Nightstand
- HVAC

### ***Lower Foyer:***

- Refrigerator under counter
- Stairwell to main deck with S/S handrails
- Stone floor

### ***Crew Quarters:***

- Kitchenette (sink, microwave and refrigerator)
- Storage locker
- LCD TV & DVD with Satellite Receiver
- Four-person settee with an expandable table
- Three crew staterooms: captain and two high-low bunk staterooms
- Captain quarters includes desk with storage and N2KView linked Apple iPad for systems diagnostics/alerts/settings. Full height hanging closet and Double berth with storage under
- Dedicated stainless work bench with vice and Snap-on tool chest. Also includes a wet locker (with ventilation and separate water drain) and storage compartment. All staterooms fully air-conditioned
- Amtico flooring

### ***Interior Décor:***

- Evan Marshall designed interior
- Majilite with IMO 652 fire standard
- Walnut Wood paneling and cabinetry in Satin finish
- Upholstered wall and ceiling panels, ceiling panels are removable
- Ocean Alexander Fresh Air system: with filtered fresh air drawn from outside and vented to lower staterooms for constant fresh, clean air. Makes for a clean and healthy environment that reduces free radicals and increase oxygen levels
- High quality European door locks
- Cedar-lined, hanging locker with auto lighting
- Concealed hinges throughout interior cabinets
- Ergonomically designed innerspring mattresses and settees
- Washer/ dryer (Commercial quality, Energy star washer/dryer) in Lazarette and Laundry
- Electrical Blinds for Salon, Dining, Master,
- Master head and Skylounge

### ***Heads:***

- Wood paneling and cabinetry
- Seamless fiberglass stall shower w/ one-piece glass door Industry leading seamless one-piece shower stall design provides long term protection against moisture, water intrusion behind the shower panels - leading to foul odors and water damage (Unique OA feature)
- Cabinet with mirror door above sink
- Air extraction in each head by low noise extraction fans
- Planus™ toilet system throughout and bidet for Master bathroom
- Custom bathroom fixtures
- Marble countertops and back splash in heads with bone china sink
- Crew quarters w/private head, shower

### ***Laundry Room:***

- Custom design laundry room with dedicated pull down ironing board, separate washer and dryer and sink/faucet
- Storage compartment for cleaning agents, folded towels and pull out shelves
- Clothes hook and countertop
- Amtico floors and stain resistant laminate walls
- Large size Freezer

**Exterior:**

- Evan Marshall designed exterior
- Ergonomically designed and laid out to enhance pilot experience/performance
- 2" elliptical 316 Stainless steel handrails & stanchions, main deck 1-1/2" on FB. Elliptical conforms better to human grip than traditional round rails. Provides greater "grip strength" for safety and comfort (Unique OA feature)
- 316 stainless-steel cleats
- Fiberglass stairs to FB from cockpit
- Elec. stainless-steel sliding doors for salon
- Elec. stainless-steel sliding doors for dining(Port)
- Elec. stainless-steel sliding doors for sky lounge.
- Elec. stainless-steel sliding doors for dining(Stbd)
- Two teak flag poles, fore and aft
- Teak and stainless swim ladder, foldable
- Weather-tight door on transom for access to engine room/ crew quarters
- White non-skid fly bridge decks
- 32" Electri-Chef™ electric barbecue
- Flybridge seat w/storage underneath and high gloss table
- Flybridge Jacuzzi
- Fiberglass stairway up to Flybridge
- Teak deck for aft deck and walkway to midship
- Teak swim platform w/ teak steps
- Flush-mounted deck lights, bulwark side doors for boarding
- Side boarding gates in cockpit and midship
- Recessed boarding ladder on starboard gunnel
- Sunpad at bow and F/B
- Custom exterior canvas and windshield mesh covers
- Exterior ceiling panels, removable. Provides a sharper and structured tailored look. Also allows for easy service of navigational electronics and plumbing runs
- Multifunctional platform with hydraulic handling system. It can be used as gangway, swim ladder, tender lift and lifting platform. The loading capacities ranging to 980kg
- Box gangway composed of three sections, also be arranged to lift tender up to 105kg
- One hydraulically operated fold-down bulwark platform on the port side amidships per the GA in size and location. The platform shall be flush with the hull-side when UP, flush with the bulwark when stowed, and flush with the main deck teak when deployed. Removable S/S railings shall be supplied for use when deployed

**Turn Key:**

- Full fuel tanks upon initial delivery
- Safety first aid kit
- Fenders, lines, flare kit, throw ring, fire extinguishers, bell
- Spare Parts package (Spare: Bilge pump, LED light, Pencil Zinc, Engine/ Generator filter, Wiper blades, Touch up paint, Fuses, Engine manuf. Spare parts kit, Generator manuf. spare parts kit, Breakers, Sump pump box, Float switch, Hydraulic gas-strut, Vimar outlet, GFI outlet, Vimar switch, Wood veneer)
- Wheel Puller for ship propellers
- Four Solas B Pack 8-Persons life raft in valise bag
- 2 sets of bed linens on all berths with pillows and towels
- Dinner china including dinner/salad/dessert plates, soup bowls, tea cup and saucers, casserole dish, salt & pepper shakers
- Flatware including steak knife, dinner knife, fork, spoon and dessert/teaspoon, salad forks, serving spoons& fork
- Table placemats, napkins, water/white/red/champagne wine glasses
- Galley cookware/pans
- Toaster, electric mixer, measuring cup, rubber/metal/plastic spatulas, mixing bowls
- Chef knives, cutting boards, coffee machine, iron

### ***Optional Equipment Chosen for this Vessel:***

- **MTU 16V-2000 Performance Package**
- **Fold-out Bulwarks**
- **Opacmare “Transformer” multi-use stem platform**
- **Opacmare “Gangway”**
- **Sun Awning for Aft Bridge Deck**
- **Electric Stidd Helm Seat (each) in lieu of standard mechanical seat**
- **Salon custom wood flooring in lieu of carpet**
- **Custom S/S potholder for cook-top for securing pots while cooking underway**

## **Construction**

---

### ***General:***

- Vinylester resin with high-density structural foam. High-density allows for high temperature resistivity and particular advantage in thermal and acoustic insulation. Usually only found in vessels 120'+
- Longitudinal and lateral fiberglass stringers filled with high-density foam
- Ocean Alexander employs various techniques to reduce sound and vibration. Focusing on

providing a quiet and comfortable yachting environment through various proprietary techniques of controlling sound and noise transmission. Some of these techniques include, multiple insulation barriers including reflective materials, absorptive materials, dampening materials, air pockets and flexible and isolation mounts. Ultimately resulting in vibration/sounds levels that are industry leading and at times 1/2 to 1/10 of ISO-6954 requirements

- Fiberglass with infusion lamination manufacturing technology
- Structural analysis based on the requirements determined by GCMNA engineered drawings
- Reinforced collision bulkhead
- Keel, stem, chine and spray knocker sections to be reinforced
- Frameless window
- Water-tight bulkheads with further sound and
- A-30 fire insulations for engine room
- Painted Exterior Surface with professional grade Alexseal polyurethane paint and epoxy based primers. Highest gloss and color retention compared with gelcoat or other paint brands
- All exterior hardware to be S/S 316 or to manufacturer requirements
- Stainless Steel to be use A.I.S.I type 316, 316L
- Aluminum to be use marine grade 5086 or 6061
- Port light with storm covers

### ***Hull/Bottom:***

- A single boot top stripe will be applied such that it is upswept at the bow.
- Interior structural components all bonded to hull
- Bottom paint shall be three coats of anti-fouling paint International, "Seahawk" paint or equal applied as directed by manufacturer over (3)coats of anti-blister epoxy primer.
- PV rub rail w/ S/S half oval plate
- Bronze through-hull fitting

### ***Deck/Pilothouse:***

- Fiberglass settee with table on aft deck, seating is fit with weather-tight access hatches.
- Fiberglass staircase from cockpit to flybridge
- Wet bar with sink and bar refrigerator, ice maker on boat deck and aft deck
- Exterior decks that are not teak receive standard sprayed linear polyurethane & non-skid mixture with shiny border around exterior hardware.

- A hardtop over the flybridge deck as detailed in the lines plan with lightweight fiberglass seating and Jacuzzi

### ***RINA Certification:***

- Construction shall be in accordance with the existing rules of the RINA classification for building the classing motor pleasure yachts, Marshall Island Flag State “Yacht Code”

## **Mechanical**

---

### ***Main Engines:***

- **MTU®16V 2000 M94 2,600HP engine**
- Engine alarm system, for low oil pressure and high water temperature
- Main engine foundations will be standard builder fabricated S/S304
- Lube oil change system for engines and generators with approximately 60-gallon lube tank
- Delta T intake/exhaust fans with variable frequency drives shall be mounted to facilitate the pushing and/or pulling of air through the machinery spaces and the providing of a high rate of air exchange. Ducts shall have fire dampers installed with manual/ automatic triggering that shall be tied into the machinery shut down circuits. Ducts in way of interior living space shall be insulated and soundproofed. System of Delta-T water separator grills used on intake and exhaust sides of system
- Adjustable/Reversible Delta T fans for engine exhaust located on superstructure instead of hull side. Maximizes water protection and salt spray, resulting in safer and lower maintenance ownership (Unique OA feature)
- Stainless steel removable rails on side of engine and stainless steel engine mounting plates
- Stabilizer with power takeoff from both engines
- One control station: PH, with complete engine instrumentation with lighted, modern switches

### ***Steering/Control:***

- Jastram® Hydraulic steering system
- Remote Engine/Thruster controller on both side of Portugal deck
- S/S rudders w/integrated zinc plates

- Dripless seal for rudderpost
- Interior steering wheel Majilite wrapped (same color as dash)
- Maintenance free “dripless” seals for engine shaft packing glands
- Propeller shaft Aquamet 22HS. 22HS is a high-grade austenitic alloy stainless steel that provides superior corrosion resistance (comparable to Aqua 22) along with excellent toughness and high strength (comparable with Aqua 17). A no compromised approach adopted by the navies around the world

**Generator:**

- Kohler® 65KW genset includes 5 year/2,000 hour warranty (2x), with seamless transfer and parallel function
- Generator exhausts to be water-drop type per “Centek”, “Marine Exhaust Co.”
- Generator set resiliently mounted and installed with sound shield & vibration dampener

**Windlass/Mooring:**

- Two (2) Hydraulic windlasses, MAXWELL VWC-6000 Vertical anchor Windlasses.
- Two (2) 440lbs MANSON KEDGE-Style anchors. The anchor’s chain consists of 360’, each side bin, of 14MM, Gr.#2 stud link attached to the anchors with Class approved S/S high tinsel Swivels
- Integral roller and chain stopper with Chain counter
- Two (2) MAXWELL VC4000 AC motor capstans on Aft Deck
- Hands-free anchor chain wash system – allows for cleaning of chain during anchor operation

**Thruster/Stabilizers:**

- ABT® /Trac 440/20’ stabilizers w/zero speed system and ABT thrusters (65HP bow and 50HP stern), with S/S 304 piping system

**Other:**



- Color-coded piping system for easy identification
- Steel Head – CT3000 telescoping aluminum deck crane
- SeaFire Fire extinguisher system FM200 with engine-shutdown feature
- SeaFire fire detection system
- Sea Recovery 1800G/Day water maker w/auto fresh water flush operation and PH Neutralizer, commercial pre-filter canister replaces the standard pre-filters, providing longer intervals between necessary filter cleaning and replacement
- Kahlenberg™ heavy-duty horn
- All engine room and bilge spaces primed and top coated with polyurethane paint system
- Hepworth® heavy-duty commercial grade pantograph windshield wipers & washers w/ intermittent function
- Detailed stringers in engine room & lazarette
- Compressed air system with Kahlenberg model D-1 air horn with 6gal tank and 0.6HP air compressor in engine room w/ multiple quick disconnect outlets

## Plumbing

---

### ***Fresh Water System:***

- 4mm thickness 316 S/S water tank.
- Headhunter™ pressure fresh-water system with HFF-7304L taste/ odor, sediment filter and UV20 UV sterilizer
- Fresh-water outlet with hose for engines & generator
- Cold fresh-water wash down at bow, stern and boat deck
- Dockside water connection

### ***Hot Water System:***

- Two (2) Torrid MH-65-gallon 6KW water heaters
- One 36KW tank-less water heater for F/B Jacuzzi

### ***Fuel System:***

- Fuel tankage system is comprised of 5 separate tanks for a combined capacity of 5,500US Gal
- 6 to 8mm thickness marine grade aluminum fuel tank w/ high low level alarm, welded and

hydro-tested by IMO standard

- Viking® fuel transfer pump with Reverso® fuel polisher
- Exceeding industry safety standards with Flame arrestor installed in fuel system. Design to prevent ignition of fumes during fueling/heavy operation. Usually found only in classed vessels
- Fuel system with venting and “catchment system” designed for burps or overflow accidents
- S/S 316 fuel piping system

### ***Black/Grey Water System:***

- 540 US Gal black water holding tank
- ECOMAR EC8 Marine Sanitation Device with chlorine generator. (800 Gal/day)
- Two (2) Planus® pro-lift twin grey water transfer system, 230V, 55GPM
- S/S 316 black water piping in Engine Room

### ***Bilge/Discharge:***

- Main bilge pump educator system as supplied by the electric fire pump will have dedicated bilge suction pick-ups through foot valves and manifold system and valves to specific areas.
- Secondary engine driven bilge pump work with main bilge pump
- High water bilge alarm at every Arid® bilge pump station

### ***Lube Oil System:***

- Groce® oil change pump & manifold
- Lube oil change system for engines and generators with Clean Lube oil Tank 60Gal, Used Lube oil Tank 60Gal
- Tank selector manifold, 304 S/S, builder fabricated
- S/S 304 oil piping system

## **Electrical**

---

### ***AC/DC System:***

- Atlas TecPOWER™ A-II SERIES- main AC switchboard (MACS), the TecPOWER switchboard provides Atlas quality and reliability for the main electrical distribution equipment of the vessel
- The AC power distribution system accepts the bus output from the switchboard and distributes the power to various loads and sub-panels throughout the vessel
- All primary AC & DC electrical wiring is appropriately labeled throughout the yacht
- GFI (110V) AC outlet
- AGM Batteries with 40F to 140F operating temp and industry leading low self discharge rates 1% to 3%
- Octoplex NEMA 2000 electrical control system. Based on aerospace technology for remote activation, control and status reporting of all AC and DC breakers. Monitors all power sources (AC and DC) for voltage, frequency and amperage abnormalities and provide visual and audio alerts. Includes enhanced circuit breaker functionality with no-load indication, dimming and usage information with touch screen monitors that are user reconfigurable. Brown-out configurable control through auto load shedding is included where operator designated equipment (e.g. navigation and other essential systems) remains powered-on while automatically switching other systems off
- Octoplex NEMA 2000 Vessel system monitor system. Provides main access doors, tank level, bilge level and battery monitoring of current, voltage and temp

### ***Air Conditioning:***

- Dometic® MCG-VLP 288SRC chilled water system, air conditioning w/ air handlers for central air conditioner, rated for extreme Tropical climates (Reverse Cycle capable for operating down to 40F)
- Refrigerant type is accepted worldwide under the
- Montreal Protocols
- Where possible A/C exits from custom made ceiling panels hidden from view

### ***Shore Power Connector:***

- Two (2) CM-8 100Amps cable master with 115' cables

### ***Lighting:***

- AC 110V LED lights
- DC emergency lighting system power will be provided from ship service battery system
- Flood light at back of boat deck, F/B deck
- International navigation lights
- Stern with (5) under water lights
- ACR searchlights

***Charger:***

- Victron® battery charger

***Battery:***

- Heavy-duty batteries
- Battery paralleling system w/ control switch
- Service battery switch

***Bonding System:***

- Bonding system throughout
- The vessel's bonding and grounding systems include copper straps secured to the hull and running the full length of the vessel parallel to centerline. Engines, generators, metallic through hulls, strainers, and pump bodies shall be connected to the bonding strap using 8 AWG wire minimum or equivalent

***Navigation Package:***

- Helm Station- 3 sets GMM 190, Ultra-thin 19"
- XGA touchscreen.
- Radar- GMR 1226 xHD2 Open array Radar

- Autopilot- GHP Reactor Solenoid Corepack
- Sounder & Transducer- GSD 25 premium sonar module w/ Garmin GT51M-THP & Airmar DST800
- AIS- AIS 600
- 4 sets Garmin GC 10 marine camera
- WSO100-01 Maretron Ultrasonic wind/weather station
- KVH- TracVision HD7
- VHF- Furuno FM8900S GMDSS VHF
- SSB- PR850A GMDSS SSB
- Navtex- NX700 GMDSS Navtex
- AIS- Transas M3 AIS
- GPS- Furuno GP150D
- Handheld VHF- ACR 2828 GMDSS VHF
- EPIRB- ACR 2846
- SART- ACR 2717NH

### ***N2KView Safety & Security Monitoring Package:***

- These security/safety automatic monitoring and alert abilities include using Apple iPad or Android for remote access to operate, view, and alarm
- Octoplex data and navigation system with a fully customizable screen layout, and remote notification (cell phone) accessibility
- These monitoring abilities include: Main Engines and Generators, AC Monitoring, DC House Bank Battery Monitoring, Engine Room Weather-tight Bulkhead Doors, Tank Levels, Bilge Level (High-water), Exterior Door Sensors

### ***Other:***

- Vimar Switches and outlets
- Smart Y-adaptor
- Panasonic Intercom System

## **Исключения**

---

При продаже яхты исключаются личные вещи владельца.

## Отказ от ответственности

---

Компания предоставляет описание судна или яхты добросовестно, но не может гарантировать точность этой информации, а также не ручается за техническое состояние. Покупатель должен проинструктировать своих агентов или оценщиков исследовать представленную информацию более подробно, по собственному желанию. Продажа судна или яхты, изменение цены или снятие с продажи будет происходить без предварительного уведомления.

# ФОТОГРАФИИ

**Aft Deck**



**Salon**



**Salon - TV**



**Salon**



**Salon Stairway**



**Formal Dining**



**Galley**



**Galley**



**Skyounge**



**Skyounge**



**Skyounge Helm**



**Skyounge Helm**



**Master Stateroom**



**Master Stateroom**



**Master Stateroom**



**Master Stateroom**





**Master Stateroom Closet**



**Master Head**



**Master Head**



**VIP Stateroom - 1**



**VIP Head**



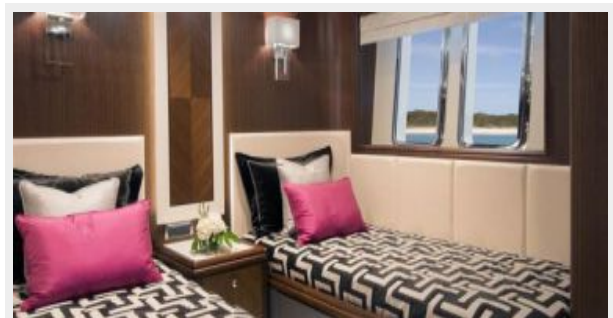
**VIP Stateroom - 2**



**VIP Head**



**Guest Stateroom - 1**



**Guest Head**



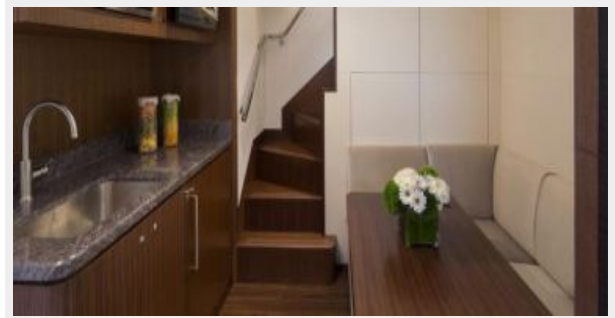
**Guest Stateroom - 2**



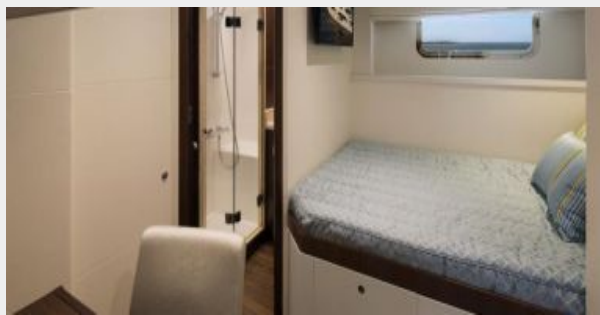
**Guest Head**



**Crew Quarters**



**Captain Cabin**



**Crew Cabin**



**Crew Cabin**



**Flybridge**



**Flybridge**



**Flybridge**



**Upper Deck**



**Engine Room**



# КОНТАКТЫ

---

Андрей Шестаков (Andrey Shestakov) – ведущий яхтенный брокер отдела продаж яхт и судов компании Shestakov Yacht Sales Inc. Официальный представитель Shestakov Yacht Sales Inc. для русскоговорящих клиентов в центральном офисе компании в Майами/Форт Лодердейл/Флорида/США.

## Контактная информация

---

Email: [andrey@shestakovyachtsales.com](mailto:andrey@shestakovyachtsales.com)

Web: [shestakovyachtsales.com](http://shestakovyachtsales.com)

## Телефоны

---

Краснодарский край: **+7(918)465-66-44**

США, Майами, Флорида: **+1(954)274-4435**

## Время работы

---

Понедельник – Суббота: **9:00 - 21:00**  
EDT

Воскресенье: **Закрыто**

## Адрес

---



Harbour Towne Marina, 850 NE 3rd St,  
STE 213, Dania, FL 33004