

## SIMPATICA — AZIMUT



**Builder:** [AZIMUT](#)

**Year Built:** 1993

**Model:** Motor Yacht

**Price:** PRICE ON APPLICATION

**Location:** United States

**LOA:** 96' 0" (29.26m)

**Beam:** 20' 0" (6.10m)

**Max Draft:** 6' 0" (1.83m)

Our experienced yacht broker, Andrey Shestakov, will help you choose and buy a yacht that best suits your needs **Simpatica — AZIMUT** from our catalogue. Presently, at Shestakov Yacht Sales Inc., we have a wide variety of yachts available on our sale's list. We also work in close contact with all the big yacht manufacturers from all over the world.

If you would like to buy a yacht **Simpatica — AZIMUT** or would like help answering any questions concerning purchasing, selling or chartering a yacht, please call **+1(954)274-4435**

# TABLE OF CONTENTS

TABLE OF CONTENTS	2
SPECIFICATIONS	6
Overview	6
Basic Information	6
Dimensions	6
Speed, Capacities and Weight	6
Accommodations	6
Hull and Deck Information	6
Engine Information	7
DETAILED INFORMATION	8
Main Salon	8
Dining Area	8
Day Head	8
VIP Stateroom	8
VIP Head	9
Port Forward Guest Stateroom	9
Port Forward Guest Head	9
Starboard Forward Guest Stateroom	9
Starboard Forward Guest Head	10
Master Stateroom, Aft	10
Master Head	10
Captain's Quarters	11
Crew Quarter Port	11
Crew Quarter Starboard	11
Forward Crew Quarter Companion	12
Lower Helm	12
Upper Helm	12
Flybridge	12

Deck	13
Electrical	13
Lazarette	14
Broker Remarks	14
Exclusions	14
Disclaimer	14
PHOTOS	15
Salon	15
Salon	15
Salon	15
Salon	15
Dining	16
Salon Bar	16
Dining	16
Galley	16
Galley	16
Master Stateroom, Aft	16
Master Stateroom	17
Master Head	17
Master Head	17
VIP Stateroom	17
VIP Stateroom	17
VIP Stateroom	17
VIP Head	18
VIP Stateroom Desk/Vanity	18
VIP Head	18
VIP Head	18
Companionway Storage	19
Port Forward Guest Stateroom	19

Port Forward Guest Stateroom	19
Starboard Guest Stateroom	19
Starboard Guest Stateroom	19
Master Stateroom Vanity	19
Stairs to Crew	20
Captain's Quarters	20
Captain's Ensuite Head	20
Captain's Ensuite Head	20
Crew Quarter Port	21
Crew Quarter Starboard	21
Stairs to Galley	21
New LED Lighting	21
Lower Helm	22
Upper Helm	22
Flybridge	22
Flybridge	22
Flybridge Grill	22
Flybridge Sink/Faucet	22
Deck Seating	23
Deck L-Shaped Seating	23
New LED Lighting	23
Deck Seating	23
New LED Lighting	24
Lazarette	24
Lazarette	24
Lazarette	24
Simpatica	24
Simpatica	24
Simpatica	25

---

CONTACTS	26
Contact details	26
Telephones	26
Office hours	26
Address	26

---

# SPECIFICATIONS

---

## Overview

---

## Basic Information

---

**Category:** Motor Yacht

**Sub Category:** Sundeck

**Model Year:** 1993

**Year Built:** 1993

**Country:** United States

**Fly Bridge:** Yes

**Cockpit:** Yes

## Dimensions

---

**LOA:** 96' 0" (29.26m)

**Beam:** 20' 0" (6.10m)

**Max Draft:** 6' 0" (1.83m)

## Speed, Capacities and Weight

---

**Displacement:** 180000 Pounds

**Water Capacity:** 580 Gallons

**Holding Tank:** 500 Gallons

**Fuel Capacity:** 2580 Gallons

## Accommodations

---

**Total Cabins:** 7

**Total Heads:** 8

## Hull and Deck Information

---

**Hull Material:** Fiberglass

---

## Engine Information

---

**Manufacturer:** MTU

**Model:** 8V396TE94

**Engine Type:** Inboard

**Fuel Type:** Diesel

---

## DETAILED INFORMATION

---

### Main Salon

---

- Access thru aft sliding doors
- New wood floor sole 2015
- New leather sofa 2015
- (2) new leather chairs 2015
- New 55" Samsung flat screen 2015
- New LED lighting 2015
- Wet bar with new granite counter top
- Ice maker in the bar
- Refrigerator in the bar
- Direct TV receiver
- New Toshiba DVD 2015
- Onkyo stereo
- Silhouette blinds and panel ceiling

### Dining Area

---

- New table and chairs 2015
- New wood flooring 2015
- (2) black storage cabinets with granite tops
- New LED lighting 2015

### Day Head

---

- Marble sole
- Marble counter/sink
- Vacuu flush head
- Vanity with storage
- Towel bar

### VIP Stateroom

---

- New carpet 2015
- New bedspread and pillows 2015
- (4) Portholes
- New LED lighting 2015
- Sharp TV



- Sharp DVD
- (2) Hanging lockers
- Desk/make-up
- Plenty drawer/cabinet storage

---

## VIP Head

---

- Marble sole
- Marble counter/sink
- Vacuu flush head
- Bidet
- Tub/shower
- Medicine cabinet
- Vanity/storage below
- Towel bars
- Overhead lighting

---

## Port Forward Guest Stateroom

---

- New carpet 2015
- New bedspreads/pillows 2015
- Side by side single berths
- Sharp flat screen TV
- Hanging locker
- (2) Portholes
- Drawer storage
- New JVC stereo/CD 2015

---

## Port Forward Guest Head

---

- Marble sole
- Marble counter tops with sink
- Vanity with storage
- Medicine cabinet
- Stall shower
- Overhead lighting
- Towel bar

---

## Starboard Forward Guest Stateroom

---

- New Carpet 2015
- New bedspreads/pillows 2015
- Side by side single berths
- Hanging locker
- Drawer storage
- Sharp TV
- Overhead lighting

---

## **Starboard Forward Guest Head**

---

- Marble sole
- Marble counter/sink
- Vanity with storage below
- Medicine cabinet
- Stall shower
- Vacuu flush head
- Porthole

---

## **Master Stateroom, Aft**

---

- New carpet 2015
- New bedspread/pillows 2015
- New LED lighting 2015
- (2) Portholes
- King berth walk around
- Make-up vanity
- New sofa 2015
- (2) Hanging lockers
- Drawer storage
- Sharp TV/DVD
- (2) Reading lights new 2015

---

## **Master Head**

---

- Marble sole
- Marble counter top/sink
- Vanity with storage below
- Vacuu flush head
- Bidet
- (2) Towel bars
- Medicine cabinet

- Tub/shower
- Overhead lighting

---

## Captain's Quarters

---

- New carpet sole 2015
- New bedspread/pillows 2015
- Queen berth
- Sharp TV/DVD
- (2) Reading lamps
- Ensuite head
- New vinyl flooring 2015
- Vacuu flush head
- Stall shower
- Vanity cabinet sink/faucet

---

## Crew Quarter Port

---

- New carpet 2015
- New bedspread/pillows 2015
- Upper/lower single bunks
- (2) Portholes
- Overhead lighting
- Hanging locker
- Ensuite head
- New vinyl sole 2015
- Vacuu flush head
- Stall shower
- Overhead lights

---

## Crew Quarter Starboard

---

- New carpet 2015
- New bedspread/pillows 2015
- Upper/lower single berths
- Overhead lights
- Forward locker
- Ensuite head
- New vinyl floors 2015
- Vanity with sink/faucet
- Stall shower

- Vacuu flush head

---

## Forward Crew Quarter Companion

---

- Miele washer/dryer
- New vinyl flooring 2015
- (2) Hanging lockers
- Escape hatch

---

## Lower Helm

---

- New wood flooring 2015
- New Stidd helm chair 2015
- New LED lighting
- New ZF electronic controls 2015
- Updated Garmin 7215 chartplotter/finder
- Updated Garmin 7215 radar
- Icom M604 VHF
- Siemens SAT phone
- Naiad stabilizer monitor
- New Kenwood CD/stereo 2015
- Microsoft computer
- KVH SAT TV
- Nera SAT phone
- New Simrad Autopilot 2016

---

## Upper Helm

---

- Garmin 4212 chartplotter
- New ZF controls 2015
- BCS thruster remote
- CF Searchlight
- VDO windlass remote
- Trim indicator
- Rudder indicator
- VDO depth
- Manual gauges

---

## Flybridge

---

- Port and starboard helm seats
- New bimini top 2015
- New LED lighting 2015
- New flybridge carpet 2015
- Sink/faucet
- Propane grill
- Refrigerator
- New Scottsman icemaker 2015
- Freezer
- Sun pad
- Port and starboard L-shaped seating
- (2) Hi-Lo tables painted 2015
- (3) New sun chairs aft 2015
- UMT davit
- Shower
- (5) JL audio speakers

---

## Deck

---

- Teak tow rail refinished 2015
- Passerelle portside aft
- Teak decks approximately 2011
- (2) Lofran windlass
- (2) 198 lb anchors with chain
- Aft deck wrapping winches
- New LED lighting 2015
- Stainless safety rails
- Transom shower
- (2) Windshield wipers
- Engine room access port
- Port and starboard stainless steel bollards
- Lasarett access
- Fuel/water fill
- Port and starboard storage cabinets
- New forward sun pads 2015
- Port and starboard dock access down
- Starboard stairs aft to swim platform
- Stainless ladder bridge access

---

## Electrical

---

- (2) Norther lights 40 kW generators approximately 1900 hrs

- At sea shore power conditioner
- New battery chargers 2015
- New batteries 2015 (6) 12 VOLT
- 24V DC lighting
- (6) Underwater lights

---

## Lazarette

---

- MTU 8V396TE94 1525 hp 4763 hrs
- W5 overhaul reported at 3134 hrs
- ZF transmissions BW 255
- Naiad hydraulic stabilizers
- (4) Cruise air chilled water air conditioners
- Coolers/heat exchangers serviced 2015

---

## Broker Remarks

---

Simpatica is an absolute must see!!! So many upgrades in 2015-2016. Wood flooring, carpet, electronics, LED lighting, canvas top, furniture, 55" Samsung TV, all new bedspreads throughout, etc., etc.!!! Bottom paint completed 2016, cutlass bearings, props tuned, complete detail and teak rail refinished. Owner will consider all quality trades.

---

## Exclusions

---

Owner's personal belongings.

---

## Disclaimer

---

The Company offers the details of this vessel or yacht in good faith but cannot guarantee or warrant the accuracy of this information nor warrant the condition of the vessel. A buyer should instruct his representatives, agents, or his surveyors, to investigate such details as the buyer desires validated. This vessel or yacht is offered subject to prior sale, price change, or withdrawal without notice.

# PHOTOS

Salon



Salon



Salon



Salon



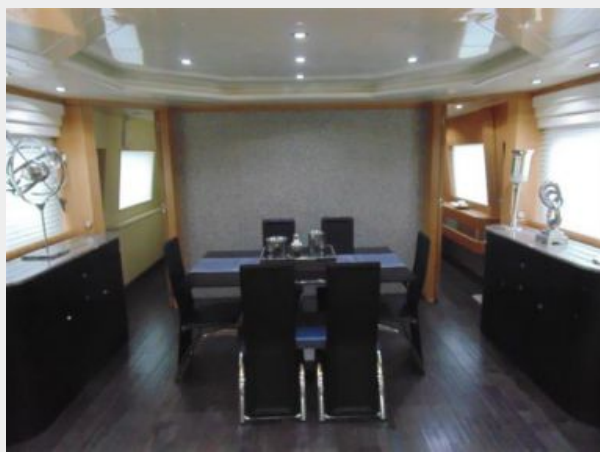
Salon Bar



Dining



Dining



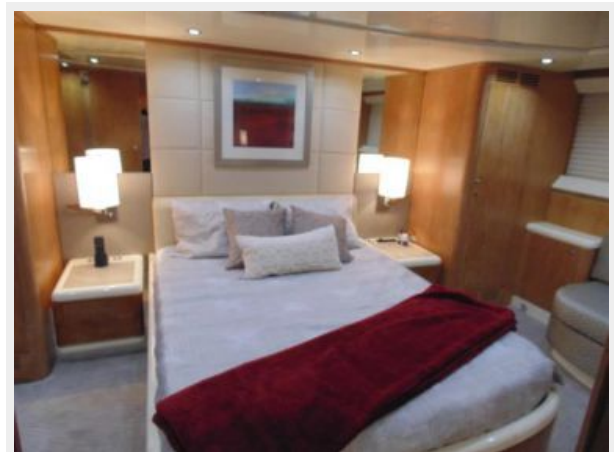
Galley



Galley



Master Stateroom, Aft





**Master Stateroom**



**Master Head**



**Master Head**



**VIP Stateroom**



**VIP Stateroom**



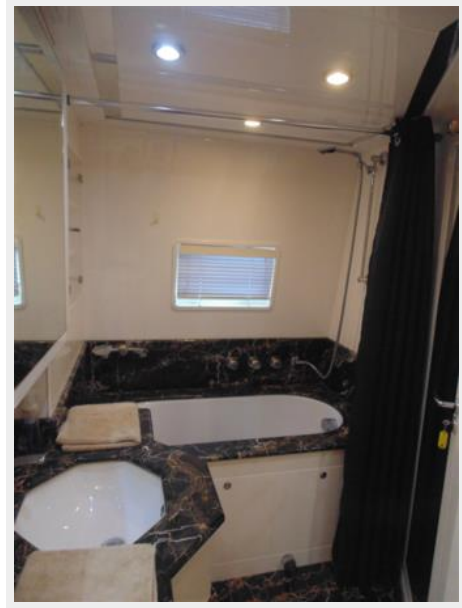
**VIP Stateroom**



VIP Stateroom Desk/Vanity



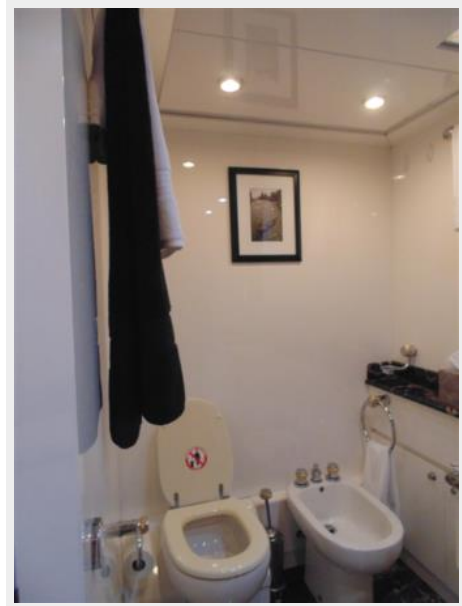
VIP Head



VIP Head



VIP Head



**Companionway Storage**



**Port Forward Guest Stateroom**



**Port Forward Guest Stateroom**



**Starboard Guest Stateroom**



**Starboard Guest Stateroom**



**Master Stateroom Vanity**



**Stairs to Crew**



**Captain's Quarters**



**Captain's Ensuite Head**



**Captain's Ensuite Head**



**Crew Quarter Port**



**Crew Quarter Starboard**



**Stairs to Galley**



**New LED Lighting**



**Lower Helm**



**Upper Helm**



**Flybridge**



**Flybridge**



**Flybridge Grill**



**Flybridge Sink/Faucet**



**Deck Seating**



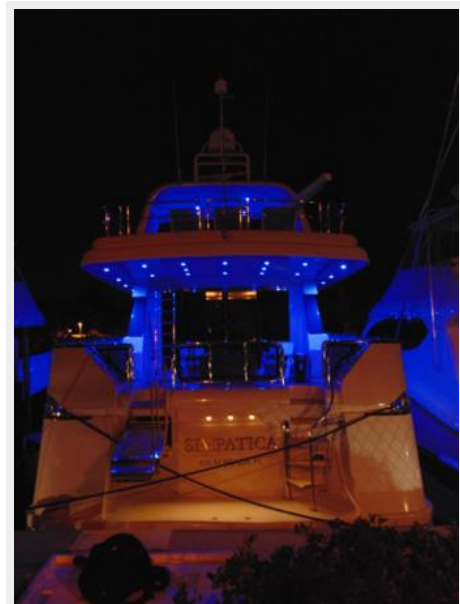
**Deck L-Shaped Seating**



**Deck Seating**



**New LED Lighting**



**New LED Lighting**



**Lazarette**



**Lazarette**



**Lazarette**



**Simpatca**



**Simpatca**





## Simpatica



# CONTACTS

---

Andrey Shestakov, leading yacht broker of the sales department of Shestakov Yacht Sales Inc. Shestakov Yacht Sales Inc., the official representative of the Miami/Fort Lauderdale FL headquarters.

## Contact details

---

Email: [andrey@shestakovyachtsales.com](mailto:andrey@shestakovyachtsales.com)

Web: [shestakovyachtsales.com/en/](http://shestakovyachtsales.com/en/)

## Telephones

---

USA: +1(954)274-4435

## Office hours

---

Monday – Saturday: **9:00 - 21:00** EDT

Sunday: **closed**

## Address

---



Harbour Towne Marina, 850 NE 3rd St,  
STE 213, Dania, FL 33004