

IVORY LADY



Год постройки: 2007

Модель: Trawler Yacht

Цена: ЦЕНА ЯХТЫ ПО ЗАПРОСУ

Длина общая: 43' (13.11m)

Ширина: 15.5

Макс. осадка: 3' 8" (1.12m)

Купить **IVORY LADY** — н/д а также выбрать подходящую вам яхту из нашего каталога яхт вам поможет опытный яхтенный брокер Андрей Шестаков. На сегодняшний день компания **Shestakov Yacht Sales Inc.** имеет большое количество яхт в собственном списке продаж, а также тесно сотрудничает со всеми крупными яхтенными производителями по всему миру.

Для того чтобы купить яхту **IVORY LADY** — н/д а также проконсультироваться по любому вопросу связанному с покупкой, продажей, чартером яхт позвоните по телефону **+7(918)465-66-44**.

ОГЛАВЛЕНИЕ

ОГЛАВЛЕНИЕ	2
ХАРАКТЕРИСТИКИ	5
Основная информация	5
Размеры	5
Скорость, вместимость и масса	5
Размещение	5
Корпус и палуба	5
Информация о двигателе	6
ФОТОГРАФИИ	7
Salon-Starboard side looking forward, Breakfast Bar, Upper storage & stairs to Open Galley	7
Salon-Port Side w/Hide-A-Bed, High/Low Table and LOTS of Light!	7
Salon-Starboard looking Forward to Lower Helm and Side door	7
Salon-Starboard Side w/Flat Screen TV, Electrical Panel at Entry, Oriental Cabinet	7
Master Stateroom-Island Queen, Cherry Lined Walls with Drawer and Underbed Storage	8
Master Stateroom-Port Side with Flat Screen TV and counter space	8
Master Stateroom-Starboard Side with Settee, 2 Hanging Lockers and Three Drawers	8
Master Stateroom-Starboard Side with Settee	8
Guest Stateroom-Work desk/Nightstand-Located starboard between Inside Pilot Station & Master	9
Guest Stateroom-Enclosure for Washer & Dryer-Located under Helm Station in Salon	9
Head-Port side between Galley & Master Stateroom with Dual Entry from Hallway and Master; Mirrored Deep Medicine Cabinet	9
Full size GE High Capacity Washer and 240v Dryer	9
Head-Vacuflush Head, Exhaust Fan, Air Conditioning Vent and screened Porthole.	10
Head-Bathtub and Fresh Shower - rare to find a bathtub in a vessel this size!	10
Galley-Smooth top electric range, oven, microwave, exhaust hood and two-drawer refrigerator	10
Galley-View from Salon	10
Galley-Beautiful teak & holly flooring, under-sole storage and dual trash bins out-board	11

Galley-Under-counter lighting, new pull-out faucet in 2015	11
Flybridge Upper Helm	11
Upper Helm Electronics	11
Flybridge Upper Helm-Electronics under canvas cover for protection when not underway	12
Upper Helm Electronics	12
Flybridge-Port L-shaped seating with under-seat storage	12
Flybridge-Starboard seating with under-seat storage	12
Aft Deck Summer Galley-240v Electric Grill and Sink	13
Aft Deck Summer Galley	13
Summer Galley-Ice Maker enclosed for protection	13
Hinged Mast-Raymarine Radar, LED Spreader lights, KVH Satellite Receiver, Rearview Camera & Anchor Light	13
Electric Panel-Easily accessible at salon entry	14
Engine Room-9 KW Onan Generator with Sound Shield and Starboard Engine	14
Engine Room-Looking forward from cockpit entry	14
Engine Room-Air Conditioning Compressor and Port Engine	14
Documentation-All manuals (and maintenance records) meticulously maintained	15
Engine Room Looking aft	15
View from Bow-Flybridge and windshields (covered with new sun screens 2016)	15
Bow Pulpit	15
Windlass Locker-Lewmar windlass, fresh & raw water washdowns, 50 amp shore power connection	16
Port Side Deck-Notice covered walk-way - only in this model Mainship	16
Starboard Side Deck-Walkways result of full-beam flybridge	16
A/B Inflatable Dinghy-New mount installed 2016 allows for swim platform access	16
A/B Inflatable Dinghy-2010 Yamaha 2 Stroke 15hhp engine; new fuel tank 2016	17
Floor Plan	17
КОНТАКТЫ	18
Контактная информация	18
Телефоны	18

Время работы	18
Адрес	18

ХАРАКТЕРИСТИКИ

Основная информация

Тип судна: Trawler Yacht

Подкатегория: Double Cabin

Модельный год: 2007

Год постройки: 2007

Размеры

Длина общая: 43' (13.11mm)

Ширина: 15.5

Макс. осадка: 3' 8" (1.12mm)

Скорость, вместимость и масса

Вместимость воды: 200 Gallons

Вместимость сточного бака: 56 Gal
Gallons

Объем топливного бака: 777 Gal Gallons

Размещение

Всего кают: 2

Всего коек: 3

Спальные места: 6

Всего ком. состава: 1

Корпус и палуба

Материал корпуса: Fiberglass

Материал палубы: Fiberglass

Комплектация корпуса: Semi-
Displacement

Цвет корпуса: IVORY

Информация о двигателе

Двигатели: 2

Производитель: Yanmar

Тип двигателя: Inboard

Тип топлива: Diesel

ФОТОГРАФИИ

**Salon-Starboard side looking forward,
Breakfast Bar, Upper storage & stairs to
Open Galley**



**Salon-Port Side w/Hide-A-Bed, High/Low
Table and LOTS of Light!**



**Salon-Starboard looking Forward to Lower
Helm and Side door**



**Salon-Starboard Side w/Flat Screen TV,
Electrical Panel at Entry, Oriental Cabinet**



Master Stateroom-Island Queen, Cherry Lined Walls with Drawer and Underbed Storage



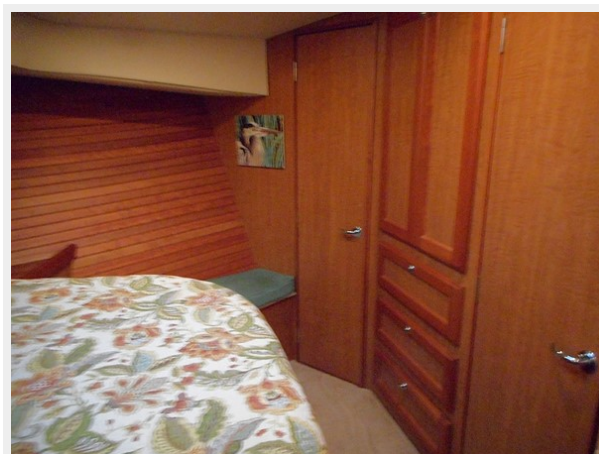
Master Stateroom-Port Side with Flat Screen TV and counter space



Master Stateroom-Starboard Side with Settee



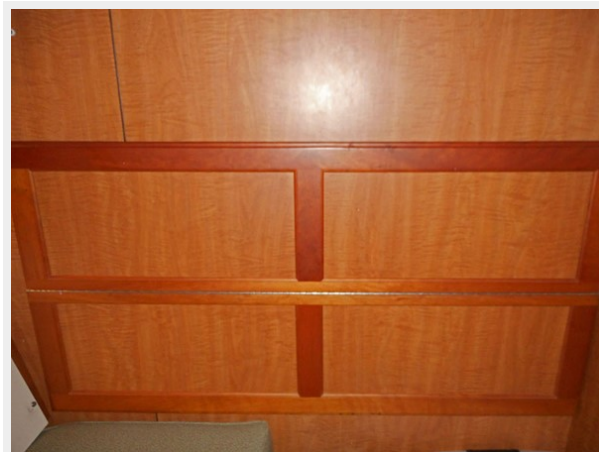
Master Stateroom-Starboard Side with Settee, 2 Hanging Lockers and Three Drawers



**Guest Stateroom-Work desk/Nightstand-
Located starboard between Inside Pilot
Station & Master**



**Guest Stateroom-Enclosure for Washer &
Dryer-Located under Helm Station in Salon**



**Full size GE High Capacity Washer and 240v
Dryer**



**Head-Port side between Galley & Master
Stateroom with Dual Entry from Hallway and
Master; Mirrored Deep Medicine Cabinet**



Head-Vacuflush Head, Exhaust Fan, Air Conditioning Vent and screened Porthole.



Head-Bathtub and Fresh Shower - rare to find a bathtub in a vessel this size!



Galley-View from Salon



Galley-Smooth top electric range, oven, microwave, exhaust hood and two-drawer refrigerator



Galley-Under-counter lighting, new pull-out faucet in 2015



Galley-Beautiful teak & holley flooring, under-sole storage and dual trash bins out-board



Flybridge Upper Helm



Upper Helm Electronics



Upper Helm Electronics



Flybridge Upper Helm-Electronics under canvas cover for protection when not underway



Flybridge-Port L-shaped seating with under-seat storage



Flybridge-Starboard seating with under-seat storage



**Aft Deck Summer Galley-240v Electric Grill
and Sink**



Aft Deck Summer Galley



**Summer Galley-Ice Maker enclosed for
protection**



**Hinged Mast-Raymarine Radar, LED
Spreader lights, KVH Satellite Receiver,
Rearview Camera & Anchor Light**



Electric Panel-Easily accessible at salon entry



Engine Room-9 KW Onan Generator with Sound Shield and Starboard Engine



Engine Room-Looking forward from cockpit entry Engine Room-Air Conditioning Compressor and Port Engine



Documentation-All manuals (and maintenance records) meticulously maintained

Engine Room Looking aft



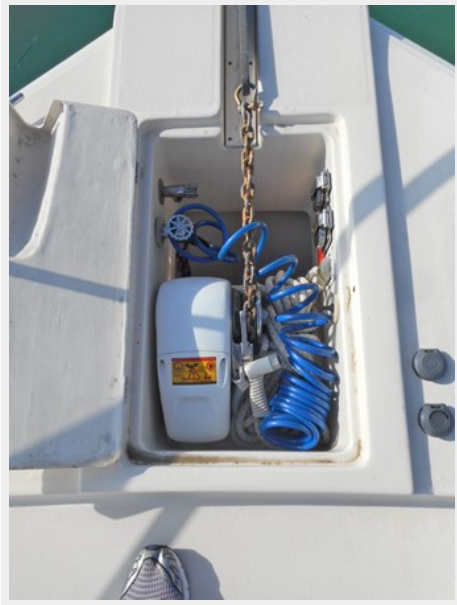
View from Bow-Flybridge and windshields (covered with new sun screens 2016)



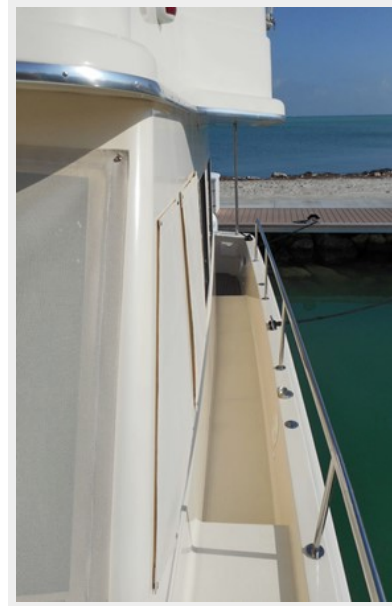
Bow Pulpit



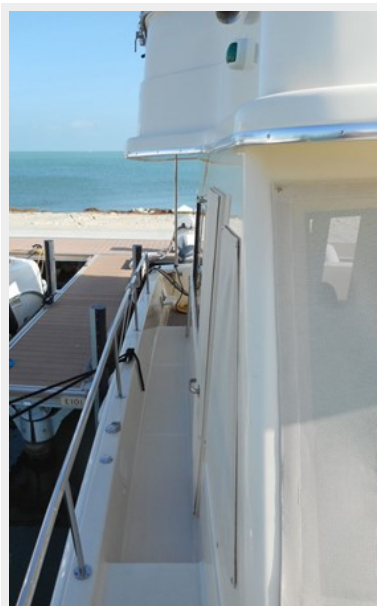
Windlass Locker-Lewmar windlass, fresh & raw water washdowns, 50 amp shore power connection



Port Side Deck-Notice covered walk-way - only in this model Mainship



Starboard Side Deck-Walkways result of full-beam flybridge



A/B Inflatable Dinghy-New mount installed 2016 allows for swim platform access



A/B Inflatable Dinghy-2010 Yamaha 2 Stroke 15hhp engine; new fuel tank 2016



Floor Plan



КОНТАКТЫ

Андрей Шестаков (Andrey Shestakov) – ведущий яхтенный брокер отдела продаж яхт и судов компании Shestakov Yacht Sales Inc. Официальный представитель Shestakov Yacht Sales Inc. для русскоговорящих клиентов в центральном офисе компании в Майами/Форт Лодердейл/Флорида/США.

Контактная информация

Email: andrey@shestakovyachtsales.com

Web: shestakovyachtsales.com

Телефоны

Краснодарский край: **+7(918)465-66-44**

США, Майами, Флорида: **+1(954)274-4435**

Время работы

Понедельник – Суббота: **9:00 - 21:00**
EDT

Воскресенье: **Закрето**

Адрес



Harbour Towne Marina, 850 NE 3rd St,
STE 213, Dania, FL 33004