

## INFILTRATION — HATTERAS



**Судостроитель:** HATTERAS

**Год постройки:** 2001

**Модель:** Катер для спортивной рыбалки

**Цена:** **ЦЕНА ЯХТЫ ПО ЗАПРОСУ**

**Местонахождение:** United States

**Длина общая:** 55' 0" (16.76m)

**Ширина:** 17' 4" (5.28m)

**Макс. осадка:** 5' 10" (1.78m)

Купить **Infiltration — HATTERAS** а также выбрать подходящую вам яхту из нашего каталога яхт вам поможет опытный яхтенный брокер Андрей Шестаков. На сегодняшний день компания **Shestakov Yacht Sales Inc.** имеет большое количество яхт в собственном списке продаж, а также тесно сотрудничает со всеми крупными яхтенными производителями по всему миру.

Для того чтобы купить яхту **Infiltration — HATTERAS** а также проконсультироваться по любому вопросу связанному с покупкой, продажей, чартером яхт позвоните по телефону **+7(918)465-66-44**.

# ОГЛАВЛЕНИЕ

ОГЛАВЛЕНИЕ	2
ХАРАКТЕРИСТИКИ	3
Обзор	3
Основная информация	3
Размеры	3
Скорость, вместимость и масса	3
Размещение	4
Корпус и палуба	4
Информация о двигателе	4
ПОДРОБНОЕ ОПИСАНИЕ	5
Layout and Accommodations	5
Electronics	5
Mechanical and Construction	6
Electrical	7
Manufacturer Provided Description	7
Исключения	7
Отказ от ответственности	8
ФОТОГРАФИИ	9
КОНТАКТЫ	12
Контактная информация	12
Телефоны	12
Время работы	12
Адрес	12

# ХАРАКТЕРИСТИКИ

## Обзор

Absolutely the finest Hatteras 55 Convertible available! Completely fresh water boat until October 2012 when it was cruised from the Great Lakes down to the Chesapeake then Charleston. Then she returned to fresh water and is owned by knowledgeable owner that wants to move to a bigger boat.

"Infiltration" is a stellar example of the smooth riding 55 Hatteras. She has benefited from being a northern freshwater boat most of her life with winters prior to this one spent in indoor storage on the Great Lakes. The boat shows excellent from the exterior paint to the interior to the engine room and bilges. The current owner spent quite a bit of time finding a boat of this caliber and then has continued to improve on her with updates and excellent maintenance practices.

## Основная информация

**Тип судна:** Катер для спортивной рыбалки

**Подкатегория:** Convertible

**Модельный год:** 2001

**Год постройки:** 2001

**Страна:** United States

## Размеры

**Длина общая:** 55' 0" (16.76m)

**Ширина:** 17' 4" (5.28m)

**Макс. осадка:** 5' 10" (1.78m)

**Трапы:** 14' 8" (4.47m)

## Скорость, вместимость и масса

**Водоизмещение:** 70000 Pounds

**Вместимость воды:** 200 Gallons

**Вместимость сточного бака:** 100 Gallons **Объем топливного бака:** 1320 Gallons

## Размещение

Всего кают: 3

Всего коек: 5

Всего ком. состава: 3

## Корпус и палуба

Материал корпуса: Fiberglass

## Информация о двигателе

Двигатели: 2

Производитель: CAT

Модель: 3412

Тип двигателя: Inboard

Тип топлива: Diesel

# ПОДРОБНОЕ ОПИСАНИЕ

---

## Layout and Accommodations

---

She is currently lying in Catawba Island, Ohio. "Infiltration" has an incredible ride, ultra reliable and low hour 1400hp 3412 CATs, and all the amenities and attention to detail that Hatteras is famous for. Her exterior awlgrip shines and her high gloss cherry interior woodwork and granite countertops make you feel like you were walking onto a new boat.

"Infiltration" features three staterooms, high gloss cherry cabinetry throughout, undercounter drawer refrigeration in the galley with granite countertops and premium softgoods and furniture! Below are a few of her other recent updates:

- **Updated entire head system (hoses and Vacu-flush boxes) short of the ceramic bowls (January 2013)**
- **Upgraded to Bose Lifestyle Audio System (January 2013)**
- **Installed two new 40" LCD TV's (January 2013)**
- **Installed dishwasher in galley (January 2013)**
- **Installed Second VHF Radio neatly in Salon Cabinet (January 2013)**
- **Installed Garmin 7 Series Chartplotter with new Transducers (January 2013)**
- **Installed custom Release Marine Cockpit Table (2012)**
- Central Vacuum
- Washer and Dryer
- 5 Cruisair reverse cycle air conditioning systems; 2-24,000BTU, 2-7000BTU, 1-5,000BTU
- Sub-Zero Galley double freezer drawers and double refrigerator drawers

## Electronics

---

Electronics are professionally flush mounted inside a power actuated pop-up instrument console at the helm:

- Garmin 7215 Chartplotter/GPS with Garmin DF Transducer (January 2013)
- Furuno FR-7112 Black Box Chartplotter/GPS & 6' Open Array Radar 12kw
- Sat Weather
- Sat TV
- Robertson AP 20 Autopilot
- Two New VHF (One on Bridge, One in Salon) done in January 2013
- VHF antenna 17'6" (2)
- Clarion AM/FM/CD/Cassette stereo-Flybridge
- Clarion amplifier & 4 speakers
- Lower cockpit & helm Clarion remote pads

---

## Mechanical and Construction

---

Low hour 1400hp CAT 3412's with 1150 hours of predominant fresh water usage! Effortless cruise at 1900rpm at 26.5 knots, Normal Cruise at 2150rpm at 30 knots and Max at 2300rpm is 32 knots! Built strong so ride is smooth and dry at all speeds even when the weather kicks up!

- **Complete Ablative Bottom Paint (January 2013)**
- **Propellers Removed and Tuned to Class S ISO Standards by Palmetto Prop (January 2013)**
- **Complete Refresh of Zincs (June 2015)**
- **Oil Change Service (June 2015)**
- **New Side Power Bow Thruster (July 2015)**
- **New Y-Valve for overboard discharge or pump out (January 2013)**
- **Installed Four OCEAN LED Underwater Lights in transom (January 2013)**
- **New Snap On Tool Box Installed in Engine Room**
- ZF Transmissions w/ Single Lever Controls
- 44 x 77.5 Six Bladed Propellers
- 3.5" Prop Shafts w/ Dripless Seals
- UL Approved Fiberglass Fuel Tanks with Baffling. Main tank is 1011 Gallons with Fwd tank of 309 Gallons
- Halon Automatic Fire Protection System
- Delta Fast Set Anchor with approx 200' of 3/8"chain
- Maxwell 22, 24V Windlass
- Bow Pulpit with Roller
- Anchor Wash Down
- Stidd helm and guest seating with cushions and covers
- Engine synchronizer
- Engine room gauge package
- Powder coated side bridge rails
- Steel braided fuel and steering lines
- Water filter (charcoal)
- UL approved fiberglass tanks (bronze fittings)
- Grab rail flybridge console
- UL approved electrical systems
- Sea and freshwater washdown, cockpit
- Transducer well
- Electric trolling valves
- Hydraulic power assisted steering
- Fuel priming pumps
- Dual fuel filters
- Polyurethane painted engine room
- Polyurethane painted lazarettes
- Painted hull and superstructure
- Stainless steel welded flybridge and bow rails

- Voltage stabliizer transformers (2)
- Freezer/refrigerator in cockpit
- Molded-in transom fishbox
- Pipewelder's hardtop with polished finish, radar support: molded three degree pod, 2 red recessed lights, 4 white recessed lights, curtain track, 4-sided enclosure, 4 antenna mounts, anchor light, 2 quartz lights
- Flybridge Upholstery Redone in 2004
- ACR spotlight RCL100
- Transom Door
- Swim Platform

## Electrical

---

- 24 Volt DC System
- 2 sets of 2 banks of 8D's in series batteries
- 220Volt, 50amp AC System
- Onan 21.5kw Generator with 1650 hours
- 50 amp Shorepower Cord with Glendinning Cablemaster
- Battery Charger

## Manufacturer Provided Description

---

The Hatteras 55 Convertible, designed for the serious sportfishing enthusiast, provides excellent maneuverability, a smooth ride, and luxury amenities. With a sleek and contemporary exterior, the 55 offers a long list of standard features that are expected from a world-class sportfishing convertible. This three-stateroom, wide-beam boat features an expansive salon and dinette area with various arrangements designed to appeal to both the cruiser and the serious sportfisherman. Two optional galley configurations are available. The master and bow staterooms boast queen-size tapered berths with convenient under-berth storage and spacious heads. An optional three-stateroom, three-head arrangement is available. The 55's flybridge comes complete with a pod-style helm console, an extended flybridge overhang, and power steering. For additional convenience, an optional tournament console featuring a power-actuated electronics console is also available. Fully equipped for a day of fishing, this 157-square-foot cockpit comes complete with a bait and tackle center actuated by foot pedals, a drop-in freezer, rod holders, an integrated transom fish box plumbed for an optional livewell, plus freshwater and seawater washdowns.

## Исключения

---

При продаже яхты исключаются личные вещи владельца.

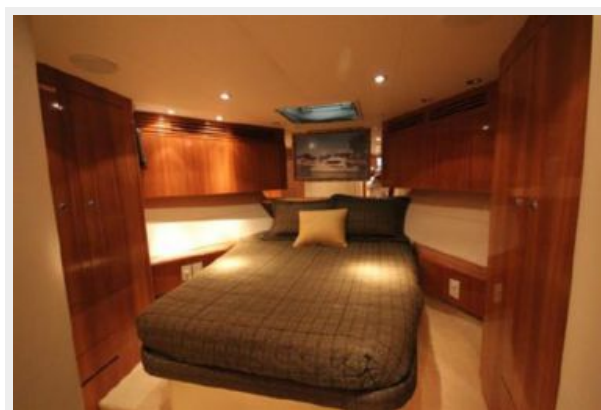
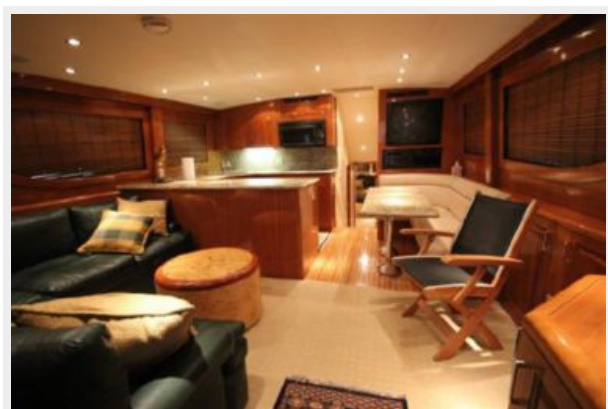
## Отказ от ответственности

---

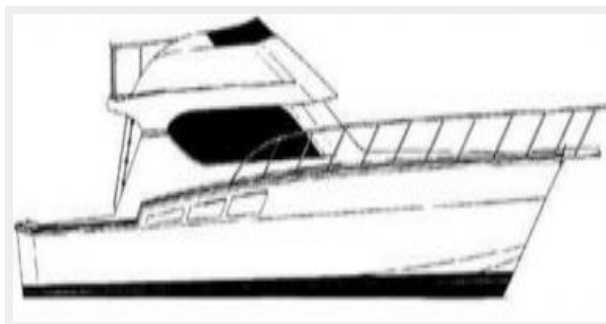
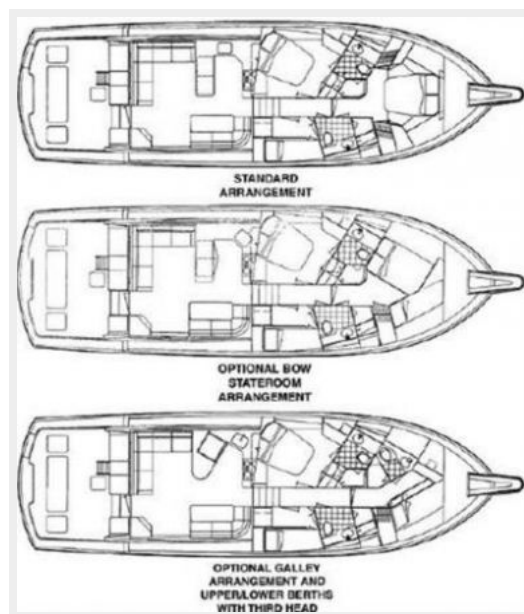
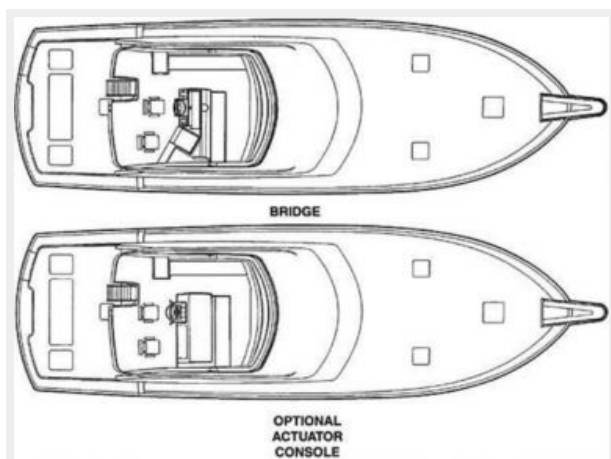
Компания предоставляет описание судна или яхты добросовестно, но не может гарантировать точность этой информации, а также не ручается за техническое состояние. Покупатель должен проинструктировать своих агентов или оценщиков исследовать представленную информацию более подробно, по собственному желанию. Продажа судна или яхты, изменение цены или снятие с продажи будет происходить без предварительного уведомления.



## ФОТОГРАФИИ







# КОНТАКТЫ

---

Андрей Шестаков (Andrey Shestakov) – ведущий яхтенный брокер отдела продаж яхт и судов компании Shestakov Yacht Sales Inc. Официальный представитель Shestakov Yacht Sales Inc. для русскоговорящих клиентов в центральном офисе компании в Майами/Форт Лодердейл/Флорида/США.

## Контактная информация

---

Email: **andrey@shestakovyachtsales.com**

Web: **[shestakovyachtsales.com](http://shestakovyachtsales.com)**

## Телефоны

---

Краснодарский край: **+7(918)465-66-44**

США, Майами, Флорида: **+1(954)274-4435**

## Время работы

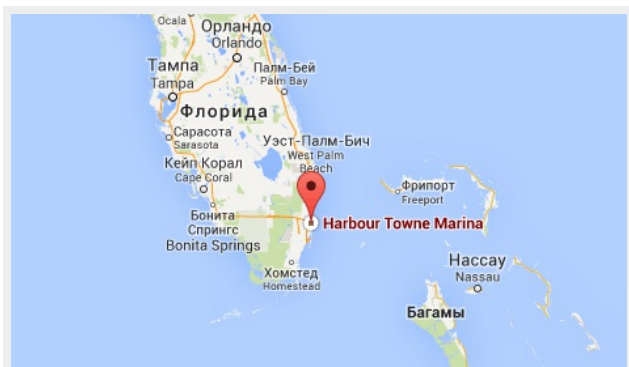
---

Понедельник – Суббота: **9:00 - 21:00**  
EDT

Воскресенье: **Закрито**

## Адрес

---



Harbour Towne Marina, 850 NE 3rd St,  
STE 213, Dania, FL 33004