

SALADUS — BENETTI



Builder: BENETTI

Year Built: 2014

Model: Mega Yacht

Price: PRICE ON APPLICATION

Location: Montenegro

LOA: 132' 0" (40.24m)

Beam: 29' 0" (8.82m)

Max Draft: 7' 4" (2.23m)

Cruise Speed: 11 Kts. (13 MPH)

Max Speed: 16 Kts. (18 MPH)

Our experienced yacht broker, Andrey Shestakov, will help you choose and buy a yacht that best suits your needs **SALADUS — BENETTI** from our catalogue. Presently, at Shestakov Yacht Sales Inc., we have a wide variety of yachts available on our sale's list. We also work in close contact with all the big yacht manufacturers from all over the world.

If you would like to buy a yacht **SALADUS — BENETTI** or would like help answering any questions concerning purchasing, selling or chartering a yacht, please call **+1(954)274-4435**

TABLE OF CONTENTS

TABLE OF CONTENTS	2
SPECIFICATIONS	3
Overview	3
Basic Information	4
Dimensions	4
Speed, Capacities and Weight	4
Accommodations	4
Hull and Deck Information	4
Engine Information	5
PHOTOS	6
CONTACTS	14
Contact details	14
Telephones	14
Office hours	14
Address	14

SPECIFICATIONS

Overview

Miscellaneous: Furuno RD- GPS repeater display in ESR Cable routing from wheelhouse to ESR Bridge navigation watch alarm system in 4 locations (bridge, captain, crew and engine room) Upper deck office / cabin Bi-directional network IR gateway, network kit, mounting kit and Apple iPod touch 8GB with remote control Samsung 32" LED TV (U205000) with hanging support Denon 2312 receiver Sat TV antenna Sea Tel 4004 Smart UPS Multiswitch Upgraded navigation package: 5 x LCD Monitors 19 " IP 65 for wheel house (3 standard + 2 extra) 3 x JT multifunction control stations with track ball and jog system (1 standard + 2 extra) 3 x 15" touch screen LCD panels to manage the following: Wipers control Whistle control Search light control Rudder's pumps control Engine Start / Stop Boat speed Depth Wind speed Wind direction GPS Radars Air temperature Air pressure Displays switching Displays brightness control Monitoring and Automation system. Alarms Electric Power Station Main Engines Bilges levels and pumps Doors and Hatches Autopilot control Steering control panel Rudder pump Steering mode and take over Take over Heading Gyrocompass Steering take over Rudder position (RAI) Roll & Pitch Boat Speed Integrated conning system display, comprising of: 1 x processor unit and 1 x TI AD-NMEA01 BASIC Software for the visualising: Heading Rate of turn Boat speed Speed over ground Depth Water temperature Wind speed Wind direction GPS Air temperature Air pressure N° 1 RADAR/VIDEO PLOTTER FURUNO Mod. FR BB 2117 IMO APPROVED N° 1 RADAR/VIDEO PLOTTER FURUNO Mod. MFDBB Navnet 3D –DRS12A Antenna ECHOSOUNDER-LOG SYSTEM N° 1 BLACKBOX ECHOSOUNDER FURUNO DFF1 N° 1 BLACKBOX ECHOSOUNDER SKIPPER GDS 101 IMO APPROVED (MCA UPGRADE) N° 1 LOG BEN BB IMO APPROVED with LENS transducer (MCA) RX GPS SYSTEM N° 1 GPS LEICA MX 500 IMO APPROVED (MCA UPGRADE) N° 1 NMEA interface WEATHER STATION N° 1 AIRMAR PB150 WIND/LOG/DEPTH Multi-NMEA SYSTEM N° 1 Blackbox GPS antenna integrated into wind sensor N° 2 Repeater Displays for Captain's and Crew Mess (1 STD+1 EXTRA) CARTOGRAPHY SYSTEM N° 1 Navnet 3D (charts excluded) INTEGRATED STEERING SYSTEM AUTOPILOT SYSTEM N° 1 AUTOPILOT BB Navis AP 3000 for Gyro and Magnetic compass connection N° 1 TAKE OVER SYSTEM for 3 control stations N° 1 Backup Navis 3000 control panel MAGNETIC COMPASS N°1 Magnetic compass C.Plath Jupiter over head mounting for Wheelhouse N° 1 Hand Bearing Compass Plastimo Iris 100 (EXTRA) GYROCOMPASS SYSTEM N°1 PLATH Gyrocompass Navigator X MK2 RUDDER ANGLE INDICATOR N°1 KWANT LBM-4 IMO APPROVED COMMUNICATION SYSTEM N°1 RADIOTELEPHONE VHF SAILOR Mod 6222 DSC N°2 RADIOTELEPHONE VHF SAILOR Mod 6210 DSC FOR WH AND CAPTAIN's N°1 VHF 6210 REPEATER FOR CREW MESS N. 1 RADIOTELEPHONE SSB SAILOR 5000 – 150 WATT WITH DSC MF N 2 SSB Antennas N°2 GSM TELULAR SX 7 UNIT N°1 Satcom C Sailor TT3000 N° 4 VHF Sailor SP3510 N° 2 VHF Sailor SP3520 GMDSS (MCA) N° 1 AIS FURUNO FA150 IMO APPROVED N° 1 NAVTEX NX700 IMO APPROVED N° 1 SAILOR 406 EPIRB N° 1 SART S4 MCMURDO N° 1 FLEET BROADBAND 250 (EXTRA) N° 1 SEATEL 4010 VSAT (EXTRA) NAVIGATION CAMERA N° 1 Night Vision Camera FLIR M Series 324L

Basic Information

Category: Mega Yacht

Model Year: 2014

Year Built: 2014

Country: Montenegro

Dimensions

LOA: 132' 0" (40.24m)

Beam: 29' 0" (8.82m)

Max Draft: 7' 4" (2.23m)

Speed, Capacities and Weight

Cruise Speed: 11 Kts. (13 MPH)

Max Speed: 16 Kts. (18 MPH)

Displacement: 606271.2205 Pounds

Gross Tonnage: 346 Pounds

Water Capacity: 1902.0387744 Gallons

Fuel Capacity: 11887.74234 Gallons

Accommodations

Total Cabins: 5

Total Berths: 10

Sleeps: 12

Total Heads: 8

Crew Cabin: 4

Crew Berths: 7

Hull and Deck Information

Hull Material: GRP

Deck Material: Teak over Fiberglass

Hull Color: Grey

Engine Information

Engines: 2

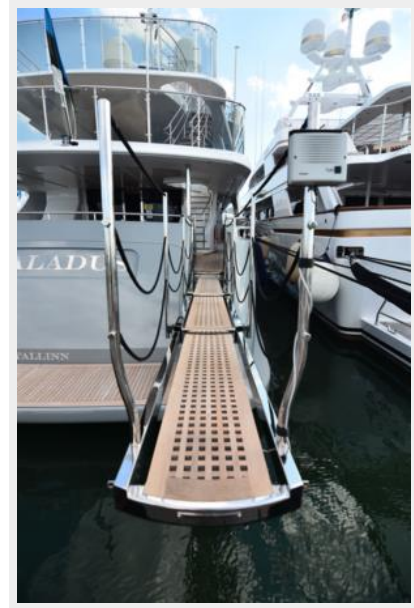
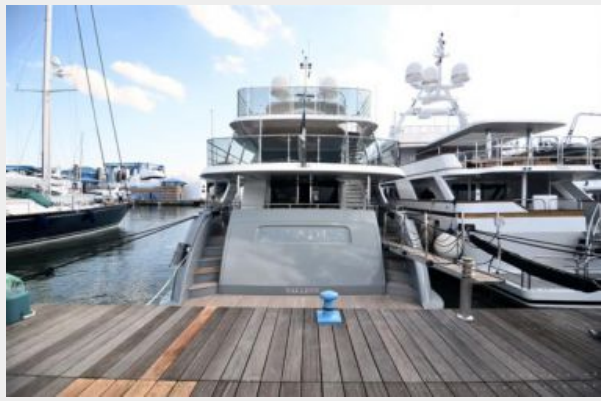
Manufacturer: MTU

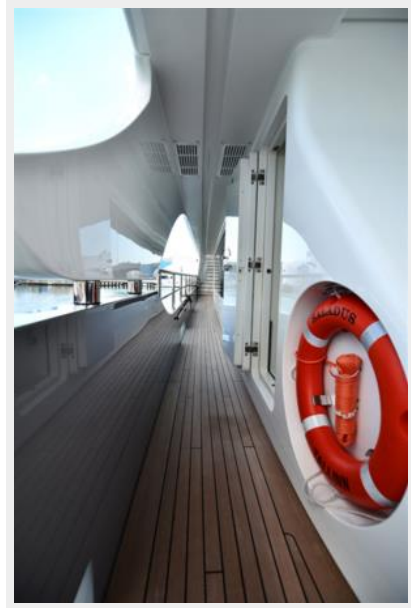
Model: 12V 2000 M72

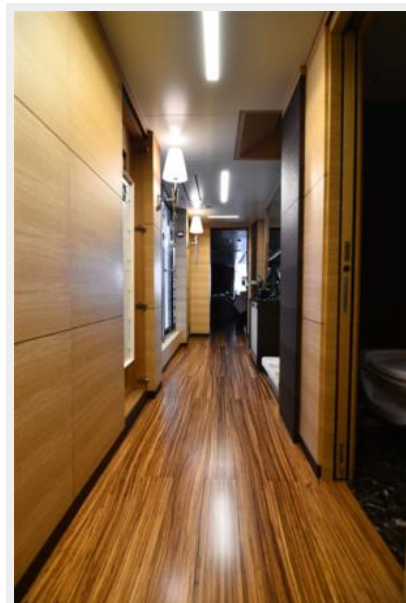
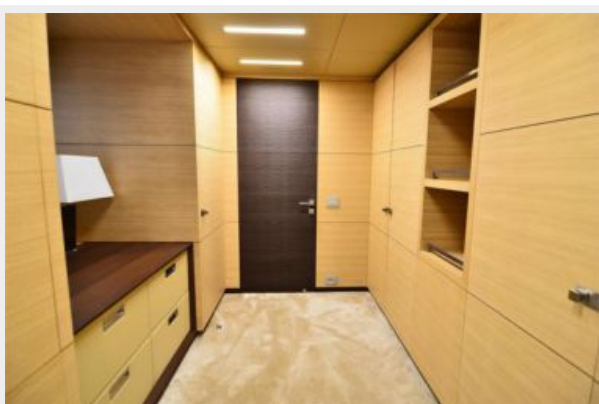
Engine Type: Inboard

Fuel Type: Diesel

PHOTOS

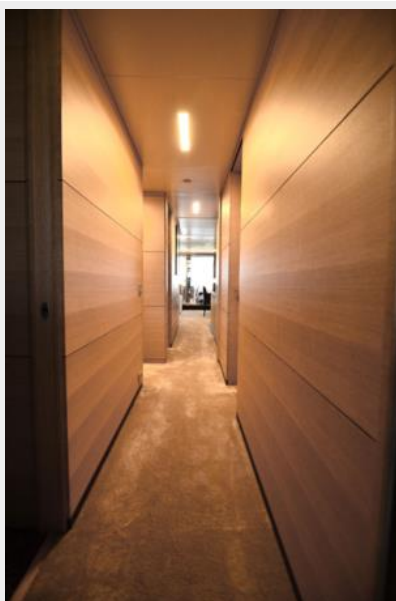
















CONTACTS

Andrey Shestakov, leading yacht broker of the sales department of Shestakov Yacht Sales Inc. Shestakov Yacht Sales Inc., the official representative of the Miami/Fort Lauderdale FL headquarters.

Contact details

Email: andrey@shestakovyachtsales.com

Web: shestakovyachtsales.com/en/

Telephones

USA: +1(954)274-4435

Office hours

Monday – Saturday: **9:00 - 21:00** EDT

Sunday: **closed**

Address



Harbour Towne Marina, 850 NE 3rd St,
STE 213, Dania, FL 33004