

SPIRIT OF ADVENTURE — VEB J. WARNKE, GERMANY



Судостроитель: [Veb J. Warnke, Germany](#)

Год постройки: 1990

Модель: Экспедиционная яхта

Цена: ЦЕНА ЯХТЫ ПО ЗАПРОСУ

Местонахождение: Malaysia

Длина общая: 110' 0" (33.53m)

Ширина: 27' 7" (8.40m)

Макс. осадка: 11' 2" (3.40m)

Крейс. скорость: 10 Kts. (12 MPH)

Макс. скорость: 12 Kts. (14 MPH)

Купить **SPIRIT OF ADVENTURE — Veb J. Warnke, Germany** а также выбрать подходящую вам яхту из нашего каталога яхт вам поможет опытный яхтенный брокер Андрей Шестаков. На сегодняшний день компания **Shestakov Yacht Sales Inc.** имеет большое количество яхт в собственном списке продаж, а также тесно сотрудничает со всеми крупными яхтенными производителями по всему миру.

Для того чтобы купить яхту **SPIRIT OF ADVENTURE — Veb J. Warnke, Germany** а также проконсультироваться по любому вопросу связанному с покупкой, продажей, чартером яхт позвоните по телефону **+7(918)465-66-44**.

ОГЛАВЛЕНИЕ

ОГЛАВЛЕНИЕ	2
ХАРАКТЕРИСТИКИ	3
Основная информация	3
Размеры	3
Скорость, вместимость и масса	3
Размещение	3
Корпус и палуба	3
Информация о двигателе	4
ПОДРОБНОЕ ОПИСАНИЕ	5
Accommodations	5
Mechanical	5
Equipment	6
Tenders	7
Исключения	7
Отказ от ответственности	7
ФОТОГРАФИИ	8
КОНТАКТЫ	11
Контактная информация	11
Телефоны	11
Время работы	11
Адрес	11

ХАРАКТЕРИСТИКИ

Основная информация

Тип судна: Экспедиционная яхта

Модельный год: 1990

Год постройки: 1990

Год обновления: 1999

Страна: Malaysia

Размеры

Длина общая: 110' 0" (33.53m)

Ширина: 27' 7" (8.40m)

Макс. осадка: 11' 2" (3.40m)

Скорость, вместимость и масса

Крейс. скорость: 10 Kts. (12 MPH)

Макс. скорость: 12 Kts. (14 MPH)

Водоизмещение: 727525.4646 Pounds

Вместимость воды: 2113.376416 Gallons

Вместимость сточного бака:
1241.6086444 Gallons

Объем топливного бака: 5943.87117
Gallons

Размещение

Всего кают: 4

Спальные места: 8

Каюта капитана: Да

Спальных мест экипажа: 8

Корпус и палуба

Материал корпуса: Steel

Информация о двигателе

Двигатели: 1

Производитель: SKL

Модель: 950hp

Тип топлива: Diesel

ПОДРОБНОЕ ОПИСАНИЕ

Accommodations

Accommodation comprises; 4 guest cabins with kingsize beds that can be converted to twin bed. Ensuite showers and toilets. Seperate Massage room. Large lounge bar and dining room with food servery area complete with dish washer, sink and dumb waiter from Galley. Seperate TV lounge and office area with ensuite toilet. Large after mezzanine deck area furnished and completely enclosed with Canopy and roll up side screens. Large chest freezer for ice and large chest refridgerator for cold drinks. Upper deck entertaining and sunbathing area with external shower, sink and fridge and cosy setting for evening drinks enclosed under canopy and detachable side screens. Crews quarters totally reburbished 2013 comprise of 3 cabins each with 2 bunk beds, 2 seperate bathrooms. Seperate laundry with 2 washers and 2 dryers, new 2013 Captains Cabin with 2 berths. Ensuite shower and toilet, seperate day toilet in companionway for crew

Mechanical

MAIN ENGINE 1 x 950hp (at 1,000 rpm) SKL 6 cylinder turbo charged diesel engine type 6VD-26/20 AL2 (air start) Abus Getriebe gearbox type SS6K with 3.934:1 ratio **SHAFTS & PROPELLERS** Single shaft with 4-bladed variable pitch propeller type NV49/4-A (60"/150cm diameter) (electro-hydraulic with HY200 automatic control unit) **SPEEDS & FUEL CONSUMPTION** Cruising speed about 10 knots (at 995 rpm) for a fuel consumption of about 100 litres (26 US gallons) per hour (including generator) Maximum speed about 11.4 knots for a fuel consumption of about 125 litres (33 US gallons) per hour (including generator) **RANGE-** 2,200 n.miles approx @ 10 knots. **ENGINES HOURS** Complete rebuild late 2009, very little use since rebuild, 50 hrs since last major service in 2014 **GENERATORS** Northern Light 55 kw, new January 2010 – hours: 2000 Baodouin 75 kw, rebuilt in 2015 – hours after rebuild: 250 **ELECTRICITY** 220v/380v AC, 50 Hz, 3-phase/single phase 24 v DC **SHORE POWER** 380 v AC, 50 Hz, 3-phase (125 amps) **BATTERIES** 2 x 24 v DC radio batteries 2 x 24 v DC crane batteries (2 batteries each) 2 x 24 v DC generator start batteries 6 x 24 v DC hotel/service batteries Total battery output 1,440 ah (all new 2013) **WATERMAKERS** 2 x Aqua qqSet type 201KS producing about 3,500 litres (925 US gallons) per day each (new 1999) **STEERING SYSTEM** Kort nozzle hydraulic steering system and rudder **BOW THRUSTER** Rexroth 125hp bowthruster coupled to main engine hydraulic pump **STABILIZERS** 2 x Vosper Fins (18.8 sq.ft/1.75 sq.m) coupled to main engine hydraulic pump **FUEL SEPARATOR** In-Line filtration system mounted on main **AND FILTERS** machinery (engine and generators) **OIL/WATER SEPARATOR** VEB type 0.2 oil centrifuge (200 litres/53 US gallons per hour capacity) VEB type 0.2 fuel centrifuge (200 litres/53 US gallons per hour capacity) **FIRE/BILGE PUMP** VEB electric fire pump type KRZ1HJ 50/19 VEB bilge pump type KMRB 100L with back-up electric motor type VEB VR2 Portable electric pump Each pump capable of 80m³/21,134 US gph **HOT WATER** 2x hot water boilers (2 x 200 litres/53 US gallons and 1 x 100 litres/26 US gallons plus 1x additional boiler for crew. **BOILERS** HOT 3) **WCS** Evac fresh water system (new 1999)

AIRCONDITIONING Snori air chilled water system (new 1999) with 2 x Copeland air compressors: 4SAH-2000-AWM (new 2010). Individual thermostatic controls. Overhauled 2013

Equipment

SAFETY & SECURITY EQUIPMENT SAFETY 2 x 20 man Bombard type AMM20 liferafts in glassfibre valises with Hammar hydrostatic releases 5 x immersion suits Lifejackets Liferings 1 x Kannad type 406 WH Sarsat Cospas 1 x Rescuer SART 9GHZ FIRE FIGHTING 1 x VEB electric fire pump (80m³/21,134 US gallons per hour capacity) with VEB bilge pump back-up Fixed CO2 engine room fire fighting installation 1 x portable electric fire pump 2 x fire fighting suits with breathing apparatus (new 2013) CO2 extinguishers throughout ALARMS Smoke detectors throughout General alarms and machinery alarms in wheelhouse (very comprehensive system) SATCOM 2 x Furuno Inmarsat C mobile earth stations type Felcom-11 satellite communications systems with **COMMUNICATION EQUIPMENT** 2 x Furuno IB 581 monitors and 2 x Furuno telex printers type PP-510 (GMDSS with 4 x Furuno type IC-300 Distress Alert Units) 1 x Nera Inmarsat mini-M satellite communication 1 x Fleet77, Thrane & Thrane (new 2009). Satellite communication system for voice and data. Wireless Broadband throughout living areas (within 3G/GSM/GPRS network) 2 x portable VHF radiotelephones (GMDSS) 2 x 25w Furuno type FM-8500 VHF/DCS radiotelephones (GMDSS) SSB RADIOTELEPHONES 1 x Furuno MF/HF DSC type DSC-6A (GMDSS) 1 x 400w Furuno MF/HF SSB radiotelephone type FS-5000 (GMDSS) **NAVIGATION EQUIPMENT** MAGNETIC COMPASS Gehna type 11 32005 magnetic compass GYRO COMPASS Tokimec type ES-140 gyro compass with 2 x repeaters type PB 21-1 on bridge wings AUTOMATIC PILOT Tokimec type PR 1585 autopilot LOG Ben Marine "Anthea" log ECHO SOUNDER Furuno LCD sounder type LS 8000 RADAR Furuno type FR 7041 radar (72 mile range) GPS Tokimec type GR 2000 GPS CHART PLOTTER Navionics electronic chart system NAVTEX Furuno type NX-500 WIND INSTRUMENTS Raytheon wind speed and direction indicator **DECK EQUIPMENT** ANCHOR WINDLASS 1 x Anchor windlass (electric 380 v AC) AFT WARPING CAPSTAN 2 x aft capstans rated at 6,600 lb/3,000 kg (new 1999) GROUND TACKLE Anchors 2 x 795 lb/360 kg Chains 2 x 4.37 shackles/394'/120m x 19mm (New 2009) BOAT CRANE & DAVITS 2 x Besenzoni telescopic cranes (SWL 1,323 lb/600 kg) (electric 24 v DC) PASSERELLE Portable (width 35"/90cm) (B.V. spec) SIDE ACCOMMODATION LADDERS Portable ladder SWIMMING PLATFORM Hydraulic swimming platform with ladder SEARCHLIGHT 1 x Sanshin Dengu remote controlled HYDRAULICS All hydraulic equipment has its own independent Pump and tank AUDIO/VISUAL ENTERTAINMENT SYSTEMS BRIEF Available throughout the internal and external living areas on the bridge deck and the flydeck, the Sonos Music System has a wide selection of music which can be controlled from the hand-held wireless remote control. You can also play your own music through the system via the iPod docking station. The Sonos system allows you to select quiet reading music down on the bridge deck, whilst those on the flybridge can have the latest dance music playing at the same time. The master cabin and all other staterooms have access to around 900 movies and 6000 songs from classical to heavy rock, via the Mitec media player. Each stateroom has a Samsung LCD flat screen TV (32 inch in the Master and 26 inch elsewhere). The Audiovisual lounge has a 42 inch Samsung Plasma TV, and as well as the

Mitec Media Player with approx. 900 movies, there is a satellite TV service and a DVD player/recorder. **ENTERTAINMENT SYSTEM** Sonos music system with wide selection of music, different selections can be played simultaneously around vessel, indoors and out. iPod docking stations allows guests to play own music. Mitec media player with a vast movie and music library. Flatscreen TVs in lounge and staterooms Satellite TV and DVD player in lounge **MASTER CABIN** Samsung 32" plasma TV Samsung Model No: LA 32B350FIXX Samsung 26" plasma TV's Samsung Model No: LA26B450C4 **LOUNGE** Samsung 42" plasma TV Samsung Model No.: PS42B430P2XX **OFFICE EQUIPMENT** PRINTER Hewlett Packard laserjet **DOMESTIC EQUIPMENT** MAIN GALLEY Bourgeois type SM 0612 electromechanic oven MBM Brescello oven (electric) Bohnhoff oven and stove with 4 hot-plates MBM Brescello deep fat fryer, grill and hot plate (with 3 warming ovens) La Combinata (blender, mixer, juice maker, etc.) Kitchenaid food mixer Grestorex type FR100 mixer Hatco type Grah 36 food warmer Réwury type B100 coffee percolator Extraction fans Lamber dishwasher plus rinsing hose Henkotac vacuum packing machine Essedue type TM300E meat slicer Otis dumb waiter (serving upper pantry) **REFRIGERATION** Frigabohn refrigerator/freezer (pantry) Frigabohn refrigerator/freezer unit (galley) 2 x Frigabohn freezers (aft lazarette) Working counter top with refrigerated drawers (galley) Frigibel drinks refrigerator (sun deck) Lamber dish washer (upper pantry) 600 bottle wine store (lazarette) **LAUNDRY** 2x Samsung heavy duty Washer and drier (New 2013) Sink, linen cupboard, worktops and Ironing station. **BARS** **OTHER EQUIPMENT** **DECK FURNITURE** Dining table and assorted director's chairs (upper aft deck) Cushions, mattresses and tables (sun deck)

Tenders

TENDERS 18ft rigid inflatable centre console tender with 90hp Honda outboard 15ft rigid Inflatable tender with 20hp Honda outboard. 2 x 1500hp Bombardier Seadoos Polaris Jet Ski 2009 Kayaks 2 x double kayals Scuba Gear (6 tanks) Baur Diving Compressor, water and wake skis

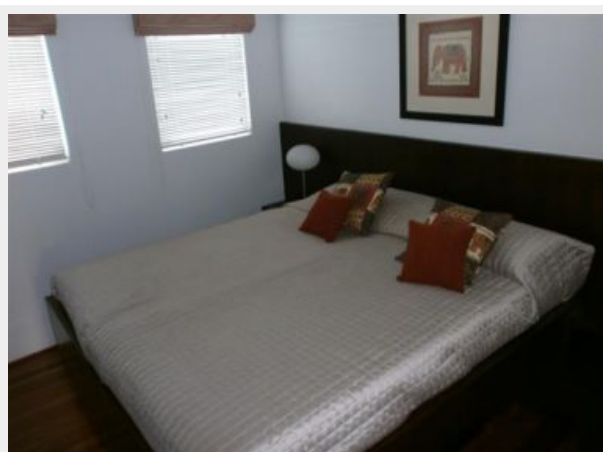
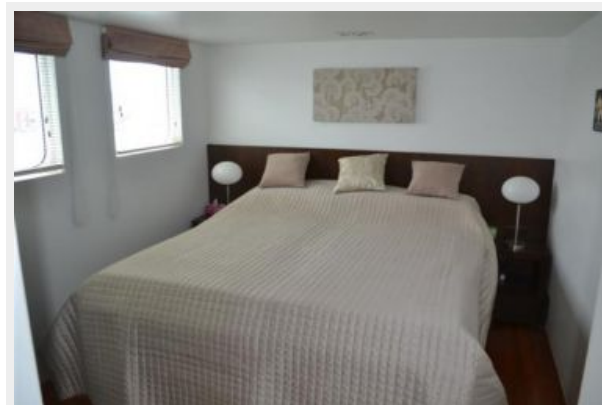
Исключения

При продаже яхты исключаются личные вещи владельца.

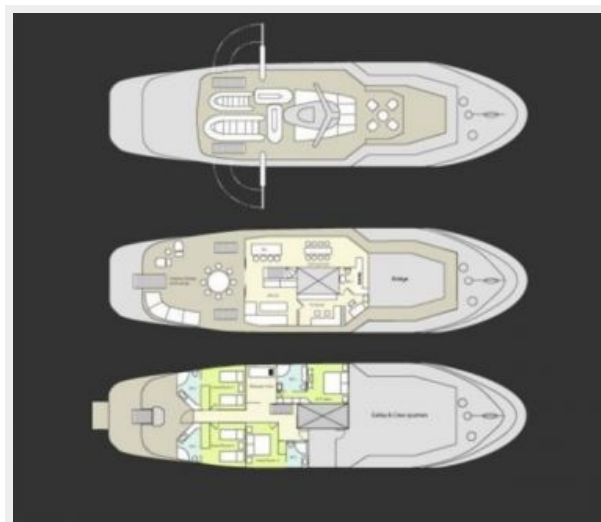
Отказ от ответственности

Компания предоставляет описание судна или яхты добросовестно, но не может гарантировать точность этой информации, а также не ручается за техническое состояние. Покупатель должен проинструктировать своих агентов или оценщиков исследовать представленную информацию более подробно, по собственному желанию. Продажа судна или яхты, изменение цены или снятие с продажи будет происходить без предварительного уведомления.

ФОТОГРАФИИ







КОНТАКТЫ

Андрей Шестаков (Andrey Shestakov) – ведущий яхтенный брокер отдела продаж яхт и судов компании Shestakov Yacht Sales Inc. Официальный представитель Shestakov Yacht Sales Inc. для русскоговорящих клиентов в центральном офисе компании в Майами/Форт Лодердейл/Флорида/США.

Контактная информация

Email: andrey@shestakovyachtsales.com

Web: shestakovyachtsales.com

Телефоны

Краснодарский край: **+7(918)465-66-44**

США, Майами, Флорида: **+1(954)274-4435**

Время работы

Понедельник – Суббота: **9:00 - 21:00**
EDT

Воскресенье: **Закрито**

Адрес



Harbour Towne Marina, 850 NE 3rd St,
STE 213, Dania, FL 33004