

LARA — SUNSEEKER



Builder: SUNSEEKER

Year Built: 2014

Model: Motor Yacht

Price: PRICE ON APPLICATION

Location: Greece

LOA: 71' 2" (21.69m)

Beam: 16' 9" (5.09m)

Min Draft: 5' 2" (1.57m)

Cruise Speed: 24 Kts. (28 MPH)

Max Speed: 33 Kts. (38 MPH)

Our experienced yacht broker, Andrey Shestakov, will help you choose and buy a yacht that best suits your needs **Lara — SUNSEEKER** from our catalogue. Presently, at Shestakov Yacht Sales Inc., we have a wide variety of yachts available on our sale's list. We also work in close contact with all the big yacht manufacturers from all over the world.

If you would like to buy a yacht **Lara — SUNSEEKER** or would like help answering any questions concerning purchasing, selling or chartering a yacht, please call **+1(954)274-4435**

TABLE OF CONTENTS

TABLE OF CONTENTS	2
SPECIFICATIONS	3
Overview	3
Basic Information	4
Dimensions	4
Speed, Capacities and Weight	4
Accommodations	4
Hull and Deck Information	4
Engine Information	5
PHOTOS	6
CONTACTS	12
Contact details	12
Telephones	12
Office hours	12
Address	12

SPECIFICATIONS

Overview

3/4g Pepwave Wi-Fi system to the yacht 90 metres of galvanised 9.5mm anchor chain Cockpit privacy cover Fresh water maker Full exterior seating covers package Increased air conditioning BTUs output to tropical Satellite TV with decoders to main Saloon/Master and VIP Stainless steel anchor Stainless steel back lit boat name Standby fresh-water pump Under water lights (white) Additional pair 12" oval mooring cleats fitted to the aft lower edge of the hull band facing aft Aerial 2.4 metre whip for FM Radio to match VHF aerial on radar arch Air conditioning European specification Antifouling to be international interspeed ultra black Apple airport express and a HDMI socket linked to AV System in the Saloon Bimini top in canvas with stainless steel frame work Bow sunbathing cushions with folding back rests Bow thruster - Sleipner SE170/250TC-24V - 10.7hp Burglar alarm - Remote controlled microwave alarm system Compass swinging and adjustment with correction card Contemporary signature interior scheme (Wenge / Anegre) with contrasting wooden flooring in Saloon Generator Onan 19kw 50Hz (19MDKBV) Electric BBQ grill in the Sports Bridge wet bar Fresh water deck wash system with outlets on Bathing Platform, Flybridge Harmon Kardon BDS2 - 2.1 Cinema sound system linked cabin TV in the Saloon Harmon Kardon BDS2 stereo sound system with Apple iPad/iPhone Airport Express wireless connectivity and an Auxiliary HDMI socket linked to AV system in the Master Stateroom and Forward VIP cabins Harmon Kardon BDS2 stereo sound system with Apple iPad/iPhone Airport Express wireless connectivity and an Auxiliary HDMI socket linked to AV system in the Starboard Guest Cabin Hydraulic telescopic gangway 4.0 metres with teak grate walkway Hydraulically lifting platform with maximum lift capacity of 450kg Icemaker Victrofrigo classic in the Sports Bridge Wet Bar Instrument Cover for flybridge console and lower console Insulated ice chest with Coolmatic TBSC 100 in the Sports Bridge Wet Bar Jabsco single beam dual station control searchlight Liferaft 8 man canister in sunpad storage space Low level LED side deck lights 8 per side Miele novotronic WT2780 washer-dryer Rear camper with windows Safe - 2 brick - with digital lock Samsung 22" LED Television in the Starboard Guest Cabin Samsung 32" LED Television in the Master Stateroom and Forward VIP Cabins Samsung 55" LED Television in the Saloon Simrad Autopilot repeater iS40 pilot display and OP10 pilot keypad Simrad IS40 speed/depth instrument x 2 Simrad RS82 VHF Radio with DSC function Sprung mattress for double bed for the Master Stateroom and Forward VIP Cabin Sprung mattress for single beds for the Starboard Guest Cabin Stern docking lights Stern docking winches - Lewmar C3 fitted port and starboard Stern thruster - Sleipner SE170/250TC-24V - 10.7hp Sunseeker safety kit Teak decking for the Aft Cockpit and Sports Bridge Teak table with centre feature in glass with Sunseeker logo on the Aft Cockpit and Sports Bridge Tender recovery roller system Two 7" Fusion Marine waterproof speakers for the Sports Bridge Two 7" Fusion Marine waterproof speakers with waterproof remote control in the Aft Cockpit Two Simrad NSS12 colour 12.1" multifunctional touch screen chart plotter displays Waeco coolmatic 80 litre refridgerator in the Aft Cockpit Water purifier for ice maker - General ecology ultrafine in-line system with spare cartridge Williams 325 Turbojet tender (100hp) in std white incl. packaging, ex delivery (chocks to be specified) Winch - Lewmar anchor winch V5GD-24V Windscreen cover Wine cooler

Basic Information

Category: Motor Yacht

Sub Category: Flybridge

Model Year: 2014

Year Built: 2014

Country: Greece

Fly Bridge: Yes

Dimensions

LOA: 71' 2" (21.69m)

Beam: 16' 9" (5.09m)

Min Draft: 5' 2" (1.57m)

Speed, Capacities and Weight

Cruise Speed: 24 Kts. (28 MPH)

Max Speed: 33 Kts. (38 MPH)

Displacement: 81571.03694 Pounds

Water Capacity: 211.3376416 Gallons

Fuel Capacity: 924.602182 Gallons

Accommodations

Total Cabins: 3

Total Berths: 6

Sleeps: 6

Total Heads: 3

Crew Cabin: 1

Crew Berths: 2

Crew Sleeps: 2

Crew Heads: 1

Hull and Deck Information

Hull Material: GRP

Engine Information

Engines: 2

Manufacturer: MTU

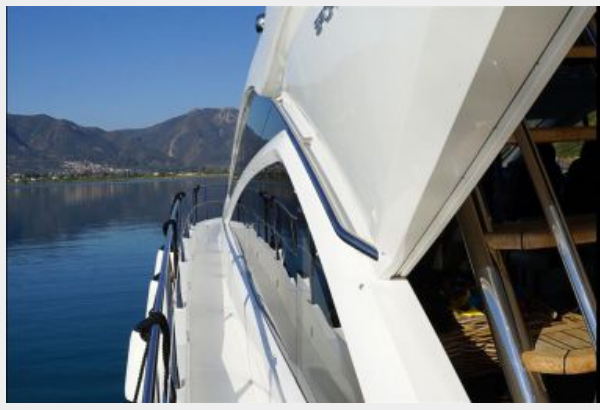
Model: 8V 2000 M94

Engine Type: Inboard

Fuel Type: Diesel

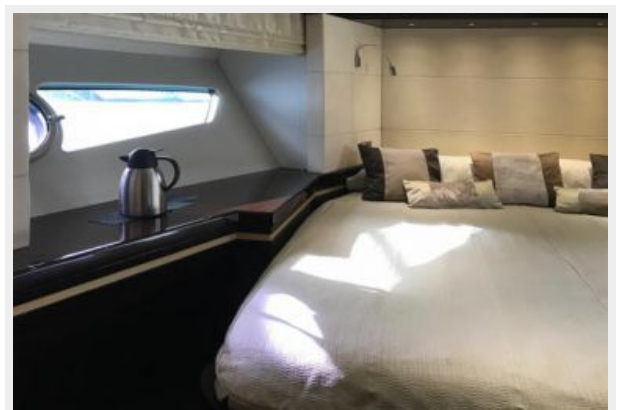
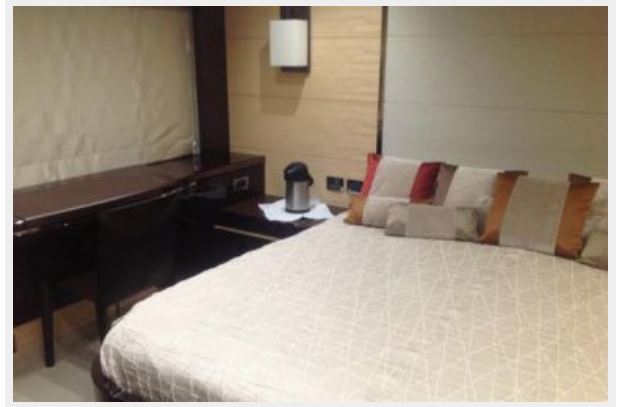
PHOTOS













CONTACTS

Andrey Shestakov, leading yacht broker of the sales department of Shestakov Yacht Sales Inc. Shestakov Yacht Sales Inc., the official representative of the Miami/Fort Lauderdale FL headquarters.

Contact details

Email: andrey@shestakovyachtsales.com

Web: shestakovyachtsales.com/en/

Telephones

USA: +1(954)274-4435

Office hours

Monday – Saturday: **9:00 - 21:00** EDT

Sunday: **closed**

Address



Harbour Towne Marina, 850 NE 3rd St,
STE 213, Dania, FL 33004