

MILLER TIME — PRESTIGE



Builder: PRESTIGE

Year Built: 2011

Model: Motor Yacht

Price: PRICE ON APPLICATION

Location: United States

LOA: 60' 0" (18.29m)

Beam: 16' 9" (5.11m)

Max Draft: 4' 3" (1.30m)

Our experienced yacht broker, Andrey Shestakov, will help you choose and buy a yacht that best suits your needs **Miller Time — PRESTIGE** from our catalogue. Presently, at Shestakov Yacht Sales Inc., we have a wide variety of yachts available on our sale's list. We also work in close contact with all the big yacht manufacturers from all over the world.

If you would like to buy a yacht **Miller Time — PRESTIGE** or would like help answering any questions concerning purchasing, selling or chartering a yacht, please call **+1(954)274-4435**

TABLE OF CONTENTS

TABLE OF CONTENTS	2
SPECIFICATIONS	3
Overview	3
Basic Information	4
Dimensions	5
Speed, Capacities and Weight	5
Accommodations	5
Hull and Deck Information	5
Engine Information	5
PHOTOS	6
CONTACTS	17
Contact details	17
Telephones	17
Office hours	17
Address	17

SPECIFICATIONS

Overview

Additional Specs, Equipment and Information: Boat Name Miller Time Dimensions LOA: 62 ft 0 in Beam: 16 ft 9 in Maximum Draft: 4 ft 3 in Deadrise: 17 ° at Transom Dry Weight: 52029 lbs Engines Engine 1: Engine Brand: Volvo Year Built: 2011 Engine Model: D-11A IPS 900 Engine Type: Inboard Engine/Fuel Type: Diesel Location: Port Engine Hours: 600 Drive Type: Pod Drive Engine Power: 700 HP Engine 2: Engine Brand: Volvo Year Built: 2011 Engine Model: D-11A IPS 900 Engine Type: Inboard Engine/Fuel Type: Diesel Location: Starboard Engine Hours: 600 Drive Type: Pod Drive Engine Power: 700 HP Tanks Fresh Water Tanks: (212 Gallons) Fuel Tanks: (740 Gallons) Holding Tanks: (124 Gallons) Accommodations Number of cabins: 3 Number of heads: 3 Electronics Navigation center Autopilot Depthsounder DVD player Radar Plotter VHF CD player Cockpit speakers GPS Radio Compass TV set Log-speedometer Inside Equipment Hot water Sea water pump Air conditioning Washing machine Heating Electric bilge pump Marine head Dishwasher Fresh water maker Refrigerator Microwave oven Oven Deep freezer Bow thruster Electrical Equipment Shore power inlet Generator Electrical Circuit: 110V Outside Equipment/Extras Teak sidedecks Cockpit table Liferaft Cockpit shower Cockpit cushions Hydraulic gangway Gangway Teak cockpit Swimming ladder Hydraulic windlass Covers Bimini Top

Vessel Overview

The 60' Prestige was designed as the Flagship of the Prestige Yachts line. Introduced to the US market place in 2009 the 60' Prestige has been turning heads ever since. From the dock you'll first notice her sleek lines, wide side decks and large bridge and cockpit areas. Once you've boarded the vessel you'll be happily surprised at not only the amount of entertaining space but with the modern look and feel of the boat. Fitted with teak cockpit, side decks and steps the Prestige was built with no expense spared.

The cockpit and interior are separated by large full length glass doors stretching from port to starboard. Once open the interior opens up. With her galley aft entertaining is a breeze. The idea here was to bring the galley central so that you are at all times just steps away from dining and entertaining areas. The salon and dinette are located centrally interior with the lower helm located to the starboard.

Below you'll find 3 large staterooms with your full-beam master located midship. The master stateroom is fitted with a large queen sized bed, sofa and desk with vanity. Waking up in the master stateroom you will quickly appreciate Prestige's approach by giving the stateroom large windows to brighten up the space. The master stateroom has an en-suite head with double sinks and separate head/shower compartments with ventilation.

The VIP stateroom is located forward and fitted with a queen size bed on the centerline.

Through hull windows and port hole allow for light and airflow in this very spacious second stateroom. The stateroom is also equipped with en-suite head and shower.

Lastly below you will find the Third Stateroom to starboard. This stateroom is great for owners or guests with children. Fitted with 2 separate single beds that can Quickly and Easily convert to one Double bed. This feature helps to make the Prestige 60 accommodating to those traveling with either 6 full grown adults or small children. The third stateroom also has private access to the 3rd head. This head compartment has access from either the 3rd stateroom or the hallway.

Walk back outside to the bridge deck and one will notice the huge entertaining space available. With a teak table, L shaped seating, a double companion bench and helm seat and even a chaise lounge this area is great both underway or on the hook. The space easily converts to be wide open or under the bimini top. The bridge of the 60 Prestige gives 360 Degree uninterrupted views.

For the person involved with running the vessel you will be glad to know that the 60' Prestige was built and equipped with ease and safety in mind. Whether you're shorthanded on help or new to large boat maneuvering the 60 Prestige will very quickly help you to look like an expert at the helm. Her twin Volvo IPS drives allow for joystick maneuvering. This Prestige is equipped with the latest in Marine technology from Raymarine to include 3D GPS, Radar, Chartplotter and Depth Sounders.

If you're in the market for a large motor yacht then this 60 Prestige has to be on your list. Offering a dynamic balance between Modern Styling, long range cruising and speed.

Disclaimer

The Company offers the details of this vessel in good faith but cannot guarantee or warrant the accuracy of this information nor warrant the condition of the vessel. A buyer should instruct his agents, or his surveyors, to investigate such details as the buyer desires validated. This vessel is offered subject to prior sale, price change, or withdrawal without notice.

Basic Information

Category: Motor Yacht

Model Year: 2011

Year Built: 2011

Country: United States

Dimensions

LOA: 60' 0" (18.29m)

Beam: 16' 9" (5.11m)

Max Draft: 4' 3" (1.30m)

MFG Length: 60' 0" (18.29m)

Speed, Capacities and Weight

Displacement: 52029 Pounds

Water Capacity: 212 Gallons

Holding Tank: 124 Gallons

Fuel Capacity: 740 Gallons

Accommodations

Total Cabins: 3

Total Heads: 3

Hull and Deck Information

Hull Material: Composite

Engine Information

Engines: 2

Manufacturer: Volvo

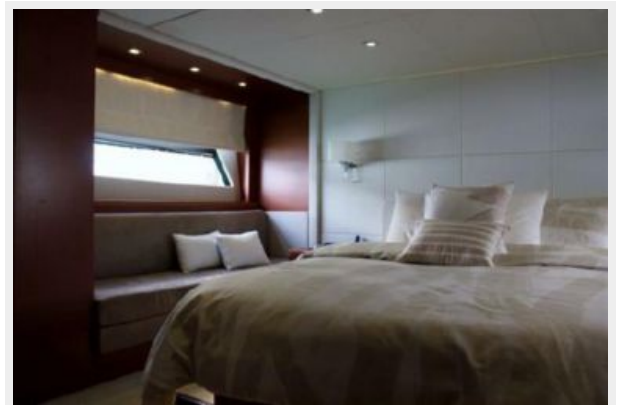
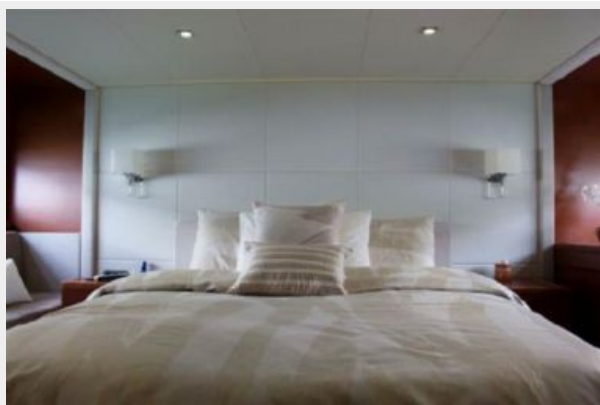
Model: D-11A IPS 900

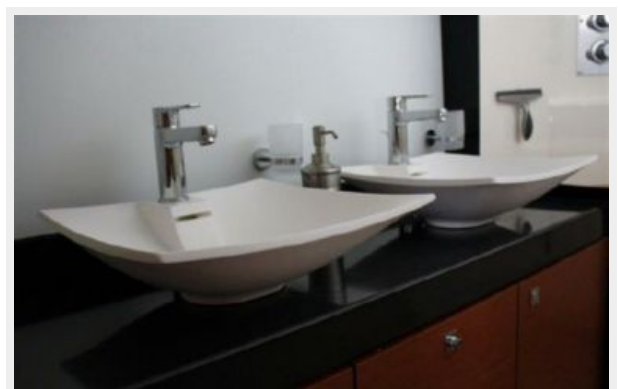
Engine Type: Inboard

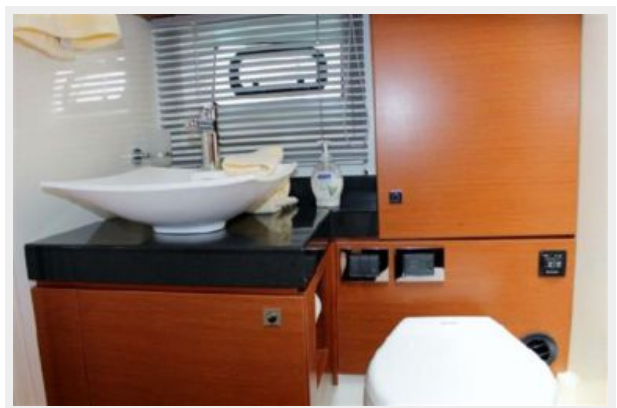
Fuel Type: Diesel

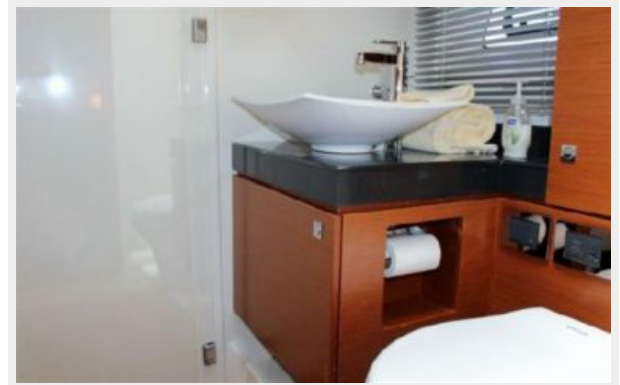
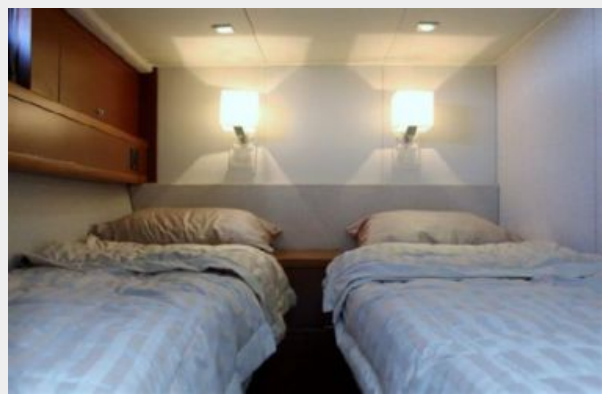
PHOTOS























CONTACTS

Andrey Shestakov, leading yacht broker of the sales department of Shestakov Yacht Sales Inc. Shestakov Yacht Sales Inc., the official representative of the Miami/Fort Lauderdale FL headquarters.

Contact details

Email: andrey@shestakovyachtsales.com

Web: shestakovyachtsales.com/en/

Telephones

USA: +1(954)274-4435

Office hours

Monday – Saturday: **9:00 - 21:00** EDT

Sunday: **closed**

Address



Harbour Towne Marina, 850 NE 3rd St,
STE 213, Dania, FL 33004