

CARVER C34 — CARVER



Судостроитель: CARVER

Год постройки: 2016

Модель: Крейсер

Цена: ЦЕНА ЯХТЫ ПО ЗАПРОСУ

Местонахождение: United States

Длина общая: 34' 0" (10.36m)

Ширина: 13' 0" (3.96m)

Мин. осадка: 3' 6" (1.07m)

Макс. осадка: 3' 6" (1.07m)

Крейс. скорость: 24 Kts. (28 MPH)

Макс. скорость: 32 Kts. (37 MPH)

Купить Carver C34 — CARVER а также выбрать подходящую вам яхту из нашего каталога яхт вам поможет опытный яхтенный брокер Андрей Шестаков. На сегодняшний день компания Shestakov Yacht Sales Inc. имеет большое количество яхт в собственном списке продаж, а также тесно сотрудничает со всеми крупными яхтенными производителями по всему миру.

Для того чтобы купить яхту Carver C34 — CARVER а также проконсультироваться по любому вопросу связанному с покупкой, продажей, чартером яхт позвоните по телефону **+7(918)465-66-44**.

ОГЛАВЛЕНИЕ

ОГЛАВЛЕНИЕ	2
ХАРАКТЕРИСТИКИ	3
Обзор	3
Основная информация	3
Размеры	3
Скорость, вместимость и масса	4
Размещение	4
Корпус и палуба	4
Информация о двигателе	4
ПОДРОБНОЕ ОПИСАНИЕ	5
Standard Features	5
Исключения	8
Отказ от ответственности	8
ФОТОГРАФИИ	9
КОНТАКТЫ	11
Контактная информация	11
Телефоны	11
Время работы	11
Адрес	11

ХАРАКТЕРИСТИКИ

Обзор

The three-deck, two-stateroom C34 Command Bridge offers real versatility, from her outstanding maneuverability and handling to her elegant living spaces. Right away, you'll notice the aggressive, raised sheer and the hull's bold shape. This innovative design provides an exceptionally smooth, dry, stable ride, while the twin inboard engines ensure that the C34 will be a top performer with quiet, gentle manners at all speeds. The command bridge offers unbroken 360-degree views, and the extra-wide cockpit doors and side decks provide easy access to all areas of the yacht.

Then there are the wide-open living spaces, the generous cockpit, the integrated swim platform, and the many thoughtful amenities that make the gemlike C34 feel like a much larger yacht. That's the magic of the C34.

Основная информация

Тип судна: Крейсер

Подкатегория: Sedan Cruiser

Модельный год: 2016

Год постройки: 2016

Страна: United States

Открытая палуба мостика: Да

Размеры

Длина общая: 34' 0" (10.36m)

Ширина: 13' 0" (3.96m)

Мин. осадка: 3' 6" (1.07m)

Макс. осадка: 3' 6" (1.07m)

Трапы: 12' 7" (3.84m)

Длина привального бруса: 35' 6"
(10.82m)

Скорость, вместимость и масса

Крейс. скорость: 24 Kts. (28 MPH)

Макс. скорость: 32 Kts. (37 MPH)

Водоизмещение: 18000 Pounds

Вместимость воды: 90 Gallons

Вместимость сточного бака: 35 Gallons

Объем топливного бака: 250 Gallons

Размещение

Всего кают: 2

Всего ком. состава: 1

Корпус и палуба

Материал корпуса: Fiberglass

Дизайнер корпуса: Carver Yachts

Дизайнер экстерьера: Carver Yachts

Дизайнер интерьера: Carver Yachts

Информация о двигателе

Двигатели: 2

Производитель: Mercury

Модель: 6.2 L

Тип двигателя: Inboard

Тип топлива: Gas/Petrol

ПОДРОБНОЕ ОПИСАНИЕ

Standard Features

Construction

- Hull, Deck and Superstructure: Hand-laid structural and non-structural fiberglass and core laminates bonded with infused resin.
- Hull bottom: Surface beneath the water line is sand blasted to create an optimal bonding surface for the anti-fouling paint. Sea Hawk® brand anti-fouling paint is sprayed onto the hull to create a smooth running bottom.
- Stringer System: Fiberglass stringers are used throughout the yacht.
- Interior bulkheads, cabinets and drawers precision cut, hand crafted cabinets constructed from a selection of woods and high pressure laminates. Drawers are lined with laminate.
- Integral aluminum truss reinforcement in cabin top structure.

Propulsion

- Engines: Twin Mercury 6.2 L inboard engines with direct coupled v-drives. Each engine's exhaust is routed to a Hydralift muffler and underwater exhaust port.
- Shafts and Shaft Logs: Aquamet® 1.5in (3.8 cm) diameter stainless steel propeller shafts. Tides Marine® SureSeal shaft logs are self-aligning, dripless and maintenance free. Sacrificial anodes are installed on each shaft.
- Rudders and Propeller Struts: Made from durable 421 Manganese bronze.
- Propellers: 20in (51 cm), four blade, Nibral propellers.
- Fuel Tanks: Twin, 5052 aluminum tanks hold 125 gal. (473 L) of fuel each. Port and starboard fuel fill deck fittings.
- Trim Tabs: Bennett Marine® 22in x 12in (56 x 30 cm) stainless steel electro-hydraulic trim tabs
- Steering: Teleflex® SeaStar hydraulic steering.
- Helm Display: Digital LCD display showing tachometer, hour meter, oil pressure, coolant temperature, battery voltage, fuel tank level and rudder angle indicator.

Decks & Hardware

- Rails: 1in (2.5 cm) 316 stainless steel rails are used throughout the vessel. Rail stanchion bases are secured using aluminum backing plates laminated into the deck's fiberglass layup.
- Mooring Cleats: 10in (25 cm) mooring cleats are used at the bow stern and amidship (total of seven cleats). Cleats are secured using aluminum backing plated fused into the vessel's laminate.
- Foredeck Access: Wide walkways are on each side of the cabin top and provide safe, secure access from the cockpit to the foredeck.
- Foredeck Hatch with screen.

Command Bridge

- Air Deflector: Plexiglass wind deflector is installed on the leading edge of the command bridge.
- Courtesy Lights: Three recessed 12V courtesy lights are installed on the C34 command bridge.
- Seating: Adjustable helm chair. Wraparound seating with table storage under wraparound seat cushions. Aft sun pad.

Salon

- Entertainment: 24in LCD Television, Blu-Ray DVD player, AM/FM/CD marine quality stereo with speakers.
- Lighting: Eight LED lights are recessed into the salon head liner.
- Controlled by a rocker switch.
- Seating: U-shaped upholstered lounge with storage underneath seating. Dining height table.
- Ventilation: Salon windows slide open.
- Storage: Hinged door on salon floor provides access to storage compartment.
- Flooring: Plush pile 100% nylon carpeting throughout salon.

Master Stateroom

- Sleeping: Queen size, island berth with Comfort Foam mattress. Dual end tables and halogen sconce style reading lights.
- Privacy: Master stateroom is secured with a hinged wooden door and locking door latch.
- Storage: Port and starboard overhead lockers. Port and starboard hanging lockers.
- Ventilation: Opening overhead hatch with screen.
- Lighting: Natural light provided by overhead hatch and hull windows with blinds. Six overhead 12V lights recessed in the headliner and controlled by a rocker switch. Two sconce reading lights.
- Flooring: Plush pile 100% nylon carpeting throughout.

Head Compartment

- Shower: Fiberglass stall shower with bench seat and hinged aluminum and acrylic door. Shower head can be used as a hand shower. Sump drain with automatic pump. Exhaust fan. LED overhead light. Molded non-skid floor.
- Toilet: Raritan® electric pedestal toilet with freshwater flush.
- Vanity: Vanity is equipped with vessel sink, under sink storage, solid surface counter top, mirrored medicine cabinet.
- Lighting: Two LED lights recessed in the headliner and controlled by wall mounted rocker switch.
- Electrical: 110V GFI protected outlet.

Electrical

- 12V System: Powered by an array of Series 31 12V batteries. Array includes two dedicated engine starting batteries and one dedicated “house” battery. Battery banks are charged by a 60 amp charger for each bank. System ammeters are located on the ship’s 12V distribution panel and voltmeters at the helm station. Battery on/off switch for the house battery is installed in the salon and the selector switch for engine batteries is located in the engine compartment.
- 110V System: System consists of a 30 amp service supported by Marinco® 50ft (15.2 m) shore power cord. Ground fault circuit interrupters are incorporated into the onboard system.
- Television: Cable television is supported by onboard inlets in the salon and master stateroom and a 50ft (15.2 m) cable to connect to shore outlet.

Fresh Water & Holding Systems

- Fresh Water System: One 90 gal. (341 L) polyethylene tank with shore water connection and integrated pressure reduction valve.
- Fresh water fill fitting installed on walkway. Six gal. (23 L) water heater installed in engine compartment.
- On demand fresh water is delivered via a fresh water pump installed in the engine compartment. An on-demand sump pump is utilized for the shower.
- Holding Tank System: Forty gal. (151L) polyethylene tank is utilized with a dockside pump out fitting on walkway of vessel.

Safety & Navigation

- Bilge Pumps: Two 1,500 gal. (5678 L) per hour automatic bilge pumps are installed, each with a manual on/off switch at the helm. A float switch for the high bilge water alarm is installed in the engine compartment.
- Bilge Ventilation: Four ventilator blowers are installed in the engine compartment. Each blower creates 240 CFM volume.
- CO Alarms: Monitors with alarms are installed in both staterooms and the salon.
- Engine Alarms: Engine oil pressure and water temperature alarms are installed at the helm.
- Fire Suppression System: An FE241 Fireboy® automatic fire suppression system is installed in the C34’s engine compartment.
- Compass: 4.5in flush mount illuminated Richie® Navigator compass is mounted at the helm.
- Seacocks: Marine grade bronze seacocks are used on all below the waterline thru hulls. Nylon fittings are used on above the waterline outlets.

Cockpit/Transom/Swim Deck

- Swim Platform: Integrated into the yacht’s hull and deck. Access to the cockpit from the swim platform is through a transom door on the starboard side of the yacht. Telescoping boarding ladder is installed in recessed area of swim platform.
- Transom: Stainless steel handrail on top of transom. Two storage lockers in aft surface of

transom.

- Engine Compartment Access: Hinged cockpit floor hatch with gas shock cylinder.
- Courtesy Lights: Four cockpit courtesy lights with on/off switch.
- Storage: Storage locker below the bottom step to the command bridge.

Galley

- Counter Tops: Solid surface countertops throughout.
- Flooring: Vinyl plank flooring.
- Appliances: Dometic® 3.8 CF (14.3 l) refrigerator, microwave oven, two burner electric cooktop.
- Sink: Full-size stainless steel sink.
- Lighting: Five recessed LED lights over galley counter controlled by rocker light switch.
- 110 Outlet: GFI protected 110V outlet.
- American Cherry Interior (CHE).

Guest Stateroom

- Sleeping: Twin berths with Comfort Foam mattresses.
- Flooring: Plush pile 100% nylon carpeting throughout.
- Privacy: Guest stateroom is secured with a hinged wooden door and locking door latch.
- Lighting: Illumination is provided by three recessed overhead LED lights controlled by a rocker switch. Two bedside reading lights.
- Natural light provided by hull portlight.

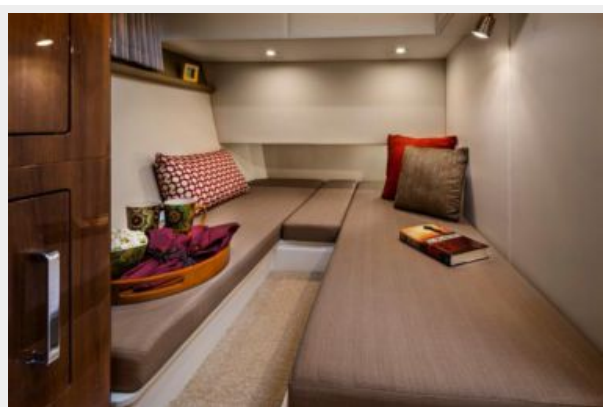
Исключения

При продаже яхты исключаются личные вещи владельца.

Отказ от ответственности

Компания предоставляет описание судна или яхты добросовестно, но не может гарантировать точность этой информации, а также не ручается за техническое состояние. Покупатель должен проинструктировать своих агентов или оценщиков исследовать представленную информацию более подробно, по собственному желанию. Продажа судна или яхты, изменение цены или снятие с продажи будет происходить без предварительного уведомления.

ФОТОГРАФИИ





КОНТАКТЫ

Андрей Шестаков (Andrey Shestakov) – ведущий яхтенный брокер отдела продаж яхт и судов компании Shestakov Yacht Sales Inc. Официальный представитель Shestakov Yacht Sales Inc. для русскоговорящих клиентов в центральном офисе компании в Майами/Форт Лодердейл/Флорида/США.

Контактная информация

Email: andrey@shestakovyachtsales.com

Web: shestakovyachtsales.com

Телефоны

Краснодарский край: **+7(918)465-66-44**

США, Майами, Флорида: **+1(954)274-4435**

Время работы

Понедельник – Суббота: **9:00 - 21:00**
EDT

Воскресенье: **Закрето**

Адрес



Harbour Towne Marina, 850 NE 3rd St,
STE 213, Dania, FL 33004