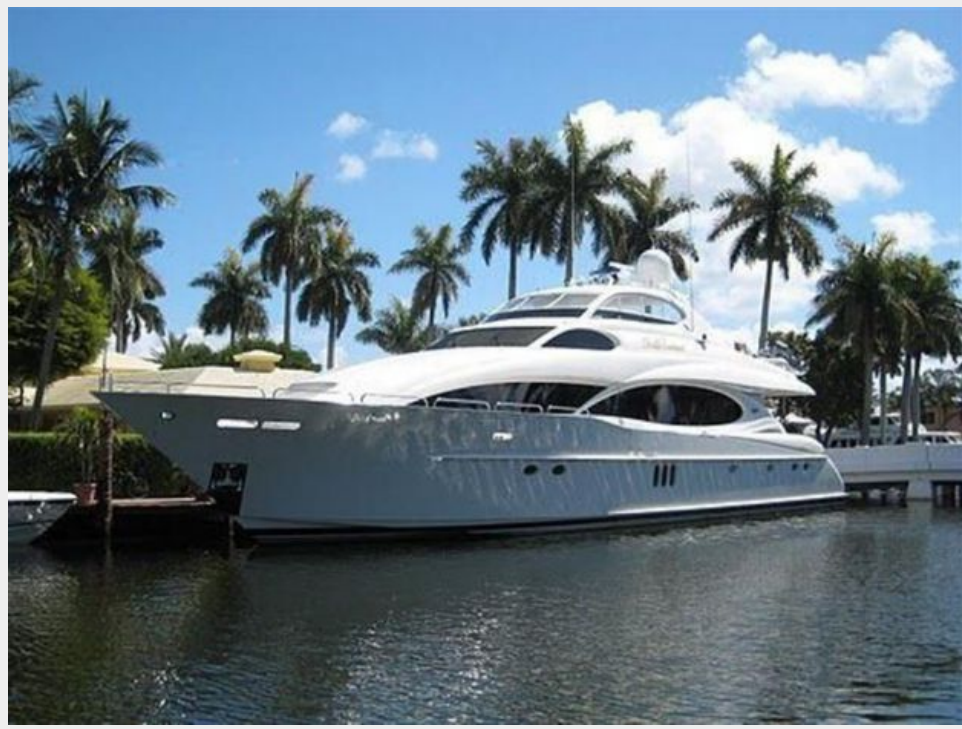


## BELLA CONTESSA — LAZZARA



**Builder:** LAZZARA

**LOA:** 106' 0" (32.31m)

**Year Built:** 2004

**Model:** Mega Yacht

**Price:** PRICE ON APPLICATION

**Location:** United States

Our experienced yacht broker, Andrey Shestakov, will help you choose and buy a yacht that best suits your needs **Bella Contessa — LAZZARA** from our catalogue. Presently, at Shestakov Yacht Sales Inc., we have a wide variety of yachts available on our sale's list. We also work in close contact with all the big yacht manufacturers from all over the world.

If you would like to buy a yacht **Bella Contessa — LAZZARA** or would like help answering any questions concerning purchasing, selling or chartering a yacht, please call **+1(954)274-4435**

# TABLE OF CONTENTS

TABLE OF CONTENTS	2
SPECIFICATIONS	3
Overview	3
Basic Information	3
Dimensions	3
Accommodations	3
Hull and Deck Information	3
Engine Information	3
DETAILED INFORMATION	4
Overview	4
Exclusions	6
Disclaimer	7
PHOTOS	8
CONTACTS	14
Contact details	14
Telephones	14
Office hours	14
Address	14

# SPECIFICATIONS

---

## Overview

---

Bella Contessa is a 106' Lazzara RPMY 2004 with 2000 series MTU's 1800hp with only 2500hrs. Hot tub on fly bridge, 15' RBI, 2 Jet skis and an Atlas system are just some of her many options. New bottom paint and prop speed

## Basic Information

---

**Category:** Mega Yacht

**Model Year:** 2004

**Year Built:** 2004

**Country:** United States

## Dimensions

---

**LOA:** 106' 0" (32.31m)

**Clearance:** 23' 0" (7.01m)

## Accommodations

---

**Total Cabins:** 4

**Sleeps:** 8

## Hull and Deck Information

---

**Hull Material:** Fiberglass

## Engine Information

---

**Engines:** 2

**Manufacturer:** MTU

**Model:** 2000 Series

**Engine Type:** Inboard

**Fuel Type:** Diesel

# DETAILED INFORMATION

## Overview

**OVERVIEW Tanks** Fresh Water Tanks: (600 Gallons) Fuel Tanks: (4300 Gallons) Holding Tanks: (300 Gallons) **Accommodations** The entire vessel is done in high gloss African cherry wood with flamed mahogany inlaid marquetry. "Bella Contessa" accommodates eight in four staterooms, with a full beam master stateroom, VIP stateroom and guest stateroom amidship. Crew quarters are located aft accommodating four in two cabins. The pilothouse features state of the art electronics and communication systems. The expansive flybridge features a jacuzzi, wet bar with Jenn-Aire, ample seating in the sun and shade. The aft deck offers a wet bar, refrigerator and icemaker teak table for dining. **Main Salon** Custom sofa & loveseat upholstered in Ellisana Sahara & Marcoat Amber fabrics Custom occasional chair upholstered in Clarisa fawn fabric Cocktail table (2) Round end tables w/fine art tables Game table w/4 custom upholstered chairs Serving bar w/veneered wood base w/crema marfil granite top, icemaker, refrigerator, wine cooler & storage for barware Entertainment center w/Sony 50" Plasma TV w/Crestron universal remote, Pioneer C300 surround sound stereo & DVD, Sony CD & JVC VCR player Floor to ceiling china cabinets w/mirrored backs & shelves Custom Fabrica carpeting w/Sounddown insulation Full length, electric curved double sliding glass doors Veneered mullions at side windows Fluted wood columns separating main salon from dining salon Headliner w/wood rosettes **Dining Area:** Oval dining table w/leaf 42'x66'x28 & (6) dining chairs Dining light is backlit w/cappuccino onyx w/cherry grill Veneered china buffet cabinet w/custom storage for china & silverware Upper china cabinets veneered w/glass doors, mirrored back & custom acrylic stemware holders Wood storage cabinets, port & starboard Custom mirrored recessed ceiling w/lighting over dining table Marble flooring w/wood border & carpet inlay Flooring is done in crema marfil grama blend w/wood border Custom upholstered walls Windows w/ 3/8" chemically strengthened glass Access to lower level aft accommodations Access to hallway leading to day head & galley **Day Head:** Day head is located in companionway, starboard side Crema Marfil onyx marble flooring Aqua Brass San Remo nickel faucets & fixtures Wall mounted vanity Mirrored wall above **Galley** Countertops are Juparana classico granite w/bullnose & full height backsplash Stainless steel double sinks Insta-hot water dispenser Cherry plank flooring w/satin finish Dishwasher 5-burner electronic cooktop Built-in oven w/convection features Convection oven/microwave w/exhaust fan Trash compactor Side-by-side refrigerator/freezer w/drawers Add'l Whirlpool refrigerator & deep freezer Smoke detector in companionway leading to galley Breakfast nook seats 6 w/deep storage compartments under settee Breakfast table is Juparana classico granite w/full bullnose Sharp 20" flat screen TV Add'l storage & pantry area **Laundry Area:** On deck laundry center to port Bosch washer & dryer Wall mounted ironing board & storage **Master Stateroom** Veneered Makore double door access to full beam master stateroom Centerline king-size bed w/drawer storage below Custom honey spread & shams w/Robert Allen silk diamond design Built-in nightstand, port & starboard Veneered Makore dressers (2) Wall sconces Built-in bookcase behind beveled glass doors Vanity/desk & chair Sony 42" Plasma TV, Pioneer surround sound stereo & DVD, JVC VCR player (6) Panoramic windows w/shoji screen & blackout shades Large walk-in cedar closet Custom Fabrica carpeting w/sounddown insulating

Full length mirror on inside of walk-in closet His & Her Master Bath: Tub w/jacuzzi, enclosed frameless glass Showers w/access from his & her head w/onyx cappuccino marble walls Crema marfil grama blend marble w/emperador dark border Twin vanities, one for both his & her heads Countertops onyx marble w/waterfall bullnose & backsplash **VIP Guest Stateroom, Forward** Queen size bed w/drawers below, custom spread & shams Upper cabinets, port & stbd Mirrored, cedar lined hanging locker Upholstered settee chair Wallmounted reading lights Indirect lighting under bed Overhead access hatch to foredeck w/blackout screen **Private ensuite head** Mirrored medicine chest over vanity Crema Marfil marble floors Halogen lighting overhead w/LED switches Stall shower Crema marfil grama blend marble w/waterfall bullnose & backsplash w/undermount sink **VIP Stateroom, Amidship** Full beam stateroom w/Queen bed w/storage below, custom spread & shams Flat screen LCD 42" TV Stereo & DVD/CD player in bookshelf Veneered bookcase w/mirrored back on outboard wall Mirrored cedar lined hanging locker Stainless opening ports Hybrid phone Flush mounted halogen lighting in headliner Pleated shades & valances **Private ensuite head w/ 3/4 tub** Mirrored medicine chest over vanity Crema Marfil marble floors Halogen lighting overhead w/LED switches **Guest Stateroom, Amidship** Full size bed w/storage below, custom spread & shams 15" flat panel LCD TV Stereo & DVD/CD in bookshelf Veneered bookcase w/mirrored back on outboard Mirrored cedar lined hanging locker Stainless opening ports Hybrid phone Flush mounted halogen lighting in headliner Pleated shades & valances **Private ensuite head** Mirrored medicine chest Crema marfil marble floors Halogen lighting overhead w/LED switches Stall shower Crema marfil grama marble w/waterfall bullnose & backsplash w/undercounter sink **Crew Quarters** Captain's cabin w/full size berth & storage drawers below Nightstand w/drawer storage Hanging locker Overhead storage lockers Wall mounted reading lights Indirect overhead lighting 15" LCD TV w/Sat receiver receiver, VCR, DVD/CD player Isis control unit w/alarm & TV monitor feed B&G hydra 2000 Anchor alarm Ensuite head & shower stall Crew cabin w/upper & lower beths (upper berth removable for storage), drawers & hanging locker 15" LCD TV, satellite receiver, VCR, DVD/CD player Private access to head, port light, corian vanity top & shower stall Crew quarters w/sink, microwave oven, refrigerator undercounter Bosch stacked washer/dryer Access to engine room w/weather tight door Remote pull station for fire system Storage cabinets **Pilothouse Equipment** Fully equipped control station Power assisted hydraulic steering Raised helm flat, electronics flat & console flat in wood veneer Stidd electric powered captains chairs Stairs to bridge are cherry w/awlgrip finish Cruising settee w/teak table behind helm Bookshelves above settee Glass front cabinets port & stbd Captains desk & chair Cherry wood flooring w/maple inlay **Electronics & Navigational Equipment** Furuno radar control RCU Furuno Radar control w/Arpa Northstar GPS 952X (pilothouse & flybridge) Anschutz Autopilot control NP 60 (pilothouse & flybridge) KVH compass repeater AR 77 (pilothouse & flybridge) B&G speed/depth/display hydra 2000 DSS receivers, US & Latin (2) KVHFB compass repeaters AR 77 (new '06) B&G speed/depth display hydra 2000 Valhalla entertain FP port monitor Vicon CCTV zoom focus Vicon CCTV switcher Vicon aft deck camera (5) VEI high resolution monitors Vahalla Radar monitor Vahalla computer monitor Vahalla sounder monitor Icom VHF 8300 Icom VHF 8400 Ray Marine 430 Hailer Furuno Navtex NX 500 Icom SSB Transceiver M802 ACR Epirb Sat2 406 Cat 1 Panasonic phone system Tellular cell phone (new '06) Sea Tel Sat TV Furuno FCV 1200L sounder KVH Satellite phone system IBM plot computer Isis monitoring system **Flybridge Equipment** Custom fiberglass hardtop Esienglass encloure Fully equipped

control station w/clutches, throttles & bow thruster Wing stations, port & stbd Power assisted hydraulic steering Stidd captain's chair Stidd helm chair Custom upholsterd settees on raised double platform, port & stbd All new flybridge upholstery ('06) Teak tables w/double stainless pedestal bases, port & stbd Half moon shaped bar w/teak counter tops, sink & dual Miele electric grills on port side Refrigerator & icemaker under bar counter (4) Swivel bar stools Jacuzzi tub w/custom upholstered sunpad area on top of tub Storage cabinet w/corion top to starboard Access sliding hatch to pilothouse Access hatch to aft deck via spiral stairs Marquipt 2000lb davit w/remote. **Aft Deck** Teak decks Curved sliding glass doors into salon Oval table w/stainless double pedestals Custom upholstered settee w/sunbrella fabric Stainless chairs w/Sunbrlla fabric Wet bar w/refrigerator/ice maker & teak top CCTV monitor w/custom enclosure Fiberglass bulwarks w/boarding gates, port & stbd Stainless steel handrails (8) Overhead lights mounted in hardtop w/dimmable switches (2) Overhead stereo speakers Freshwater hot & cold shower (2) Sea Doors in storage pods, port & stbd w/hydraulic pod doors Spiral stairways, port & stbd to swim platform Deck Equipment Vertical hydraulic anchor windlass Maxwell 22 warping winches, port & stbd Twin stainless breastplates for hull anchor pockets (2) Poole 200lb polished stainless steel anchors Automatic anchor chain washdown system Custom designed stainless steel cleats Bulwark boarding gates, port & starboard Forward bow deck seating w/hydraulic lift lid to access storage (2) Cablemasters, aft & fwd **Electrical** Twin Onan 45 KW generators (2) Charles Industries Smart Y dockside voltage/phase combiner (4) Heavy duty batteries Vapor proof battery switches Atlas Classic II shore power system Isis PC computer shipboard & alarm monitoring system **Engine & Mechanical Equipment** Twin DDC/MTU, 1800 HP w/3 DDEC control stations Sea Recovery 1800 GPD watermaker American bow thruster, 50 HP American Trac digital stabilizers Air conditioned engine room Acoustical & thermal insulation Chilled water for A/C & heating Bilge pump, 230v, 120 gallons/inture, manifold to each bilge compartment Secondary bilge pumps to evacute each bilge Dockside water connection w/pressure reducing valves (2) Delta T engine room blowers, variable speeds Main engine sea strainers Microphor compressed air marine heads Fire protection system, auto & manual w/auto shut down system Fire pump w/hose connections Freshwater outlet Freshwater washdown Aircraft type stainless steel fuel lines (4) Fuel priming pumps Oberdofer fuel transfer pump Manifold Racor fuel filters for engines & gens DDEC electronic engine controls Holding tank w/access for pump out, 380 gal (2) Holding tanks, port & stbd, 40 gal ea Jastram Hydraulic steering, power assisted Underwater engine exhausts w/dockside bypass for engines & gens Oil changing system for engines, gens & gears Bronze underwater thru hulls & sea cocks Aquamet shafts DDEC electronic engine function displays Water filtration system Cast stainless steel rudders Pressurized gray water pump out system Engine room sink w/hot & cold water Central vacuum system Workbenches Removable engine room grating **Disclaimer** The Company offers the details of this vessel in good faith but cannot guarantee or warrant the accuracy of this information nor warrant the condition of the vessel. A buyer should instruct his agents, or his surveyors, to investigate such details as the buyer desires validated. This vessel is offered subject to prior sale, price change, or withdrawal without notice.

## Exclusions

Owner's personal belongings.

## Disclaimer

---

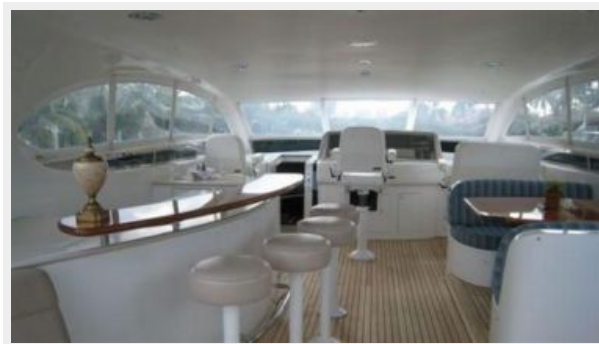
The Company offers the details of this vessel or yacht in good faith but cannot guarantee or warrant the accuracy of this information nor warrant the condition of the vessel. A buyer should instruct his representatives, agents, or his surveyors, to investigate such details as the buyer desires validated. This vessel or yacht is offered subject to prior sale, price change, or withdrawal without notice.

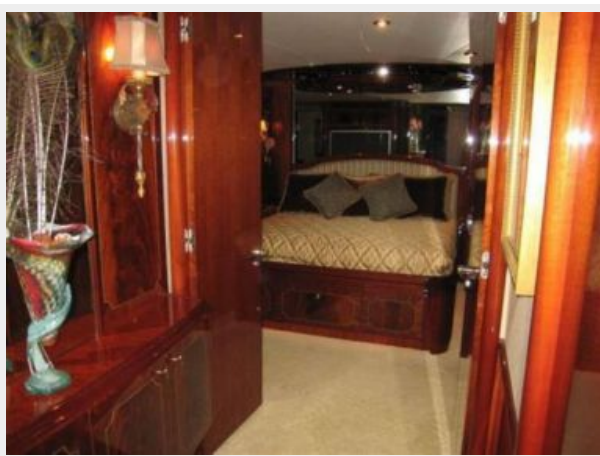


# PHOTOS

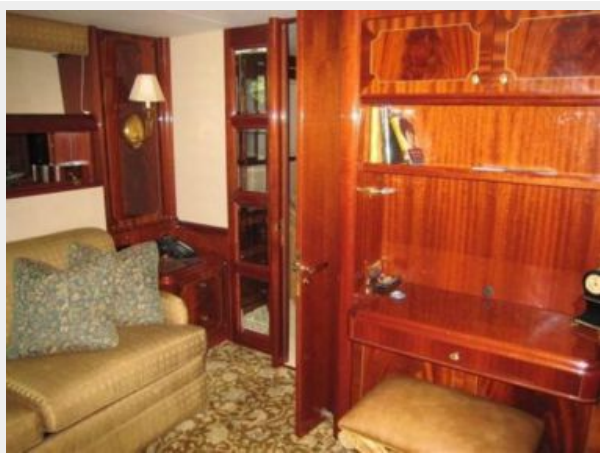






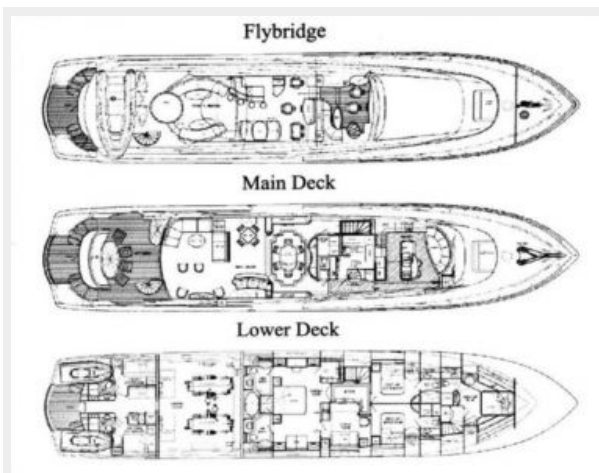
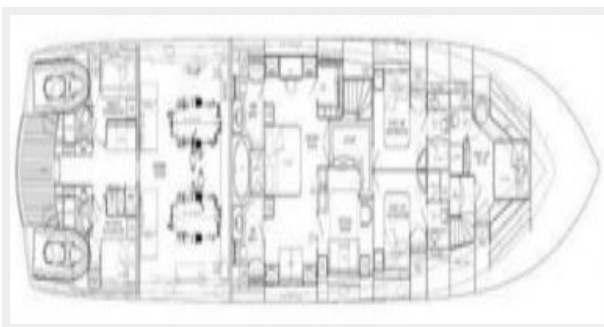
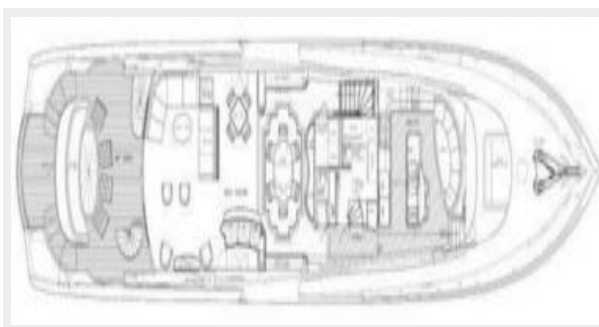
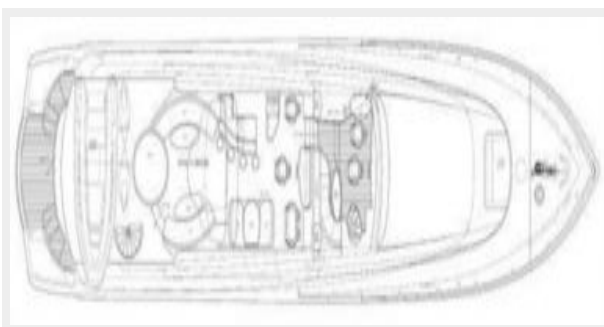












# CONTACTS

---

Andrey Shestakov, leading yacht broker of the sales department of Shestakov Yacht Sales Inc. Shestakov Yacht Sales Inc., the official representative of the Miami/Fort Lauderdale FL headquarters.

## Contact details

---

Email: **andrey@shestakovyachtsales.com**

Web: [shestakovyachtsales.com/en/](http://shestakovyachtsales.com/en/)

## Telephones

---

USA: **+1(954)274-4435**

## Office hours

---

Monday – Saturday: **9:00 - 21:00 EDT**

Sunday: **closed**

## Address

---



Harbour Towne Marina, 850 NE 3rd St,  
STE 213, Dania, FL 33004