

PARADISE — VAGABOND



Builder: VAGABOND

Year Built: 1984

Model: Cruising Sailboat

Price: PRICE ON APPLICATION

Location: United States

LOA: 47' 0" (14.33m)

Beam: 13' 5" (4.09m)

Max Draft: 5' 6" (1.68m)

Our experienced yacht broker, Andrey Shestakov, will help you choose and buy a yacht that best suits your needs **PARADISE — VAGABOND** from our catalogue. Presently, at Shestakov Yacht Sales Inc., we have a wide variety of yachts available on our sale's list. We also work in close contact with all the big yacht manufacturers from all over the world.

If you would like to buy a yacht **PARADISE — VAGABOND** or would like help answering any questions concerning purchasing, selling or chartering a yacht, please call **+1(954)274-4435**

TABLE OF CONTENTS

TABLE OF CONTENTS	2
SPECIFICATIONS	3
Overview	3
Basic Information	6
Dimensions	6
Speed, Capacities and Weight	7
Accommodations	7
Hull and Deck Information	7
Engine Information	7
PHOTOS	8
CONTACTS	11
Contact details	11
Telephones	11
Office hours	11
Address	11

SPECIFICATIONS

Overview

This William Gardner designed blue water cruiser is ready to continue to far away places. PARADISE had an extensive refit in 2008 and is currently expertly maintained by a professional yacht captain.

This vessel is a real classic that gets attention from everyone where ever she goes. PARADISE is not only good looking, it is an vessel that was designed to be easily sailed short handed in almost any condition while giving the utmost comfort with it's 44,000 lb displacement.

The beautiful teak interior lends a warm and inviting atmosphere for living, entertaining or voyaging.

- Solid quality construction
- Full keel and hung rudder for safety and comfort
- Infinitely adjustable sail plan for any condition
- Beautifully maintained brightwork
- Fully equipped for living or voyaging
- Stands out at any dock or anchorage
- Bathtub!!!
- Passed Oct 2015 Coast Guard Aux. Inspection

Boat Name PARADISE Specs Keel: Full Dimensions LOA: 62 ft 0 in Beam: 13 ft 5 in LWL: 36 ft 0 in Length on Deck: 47 ft 0 in Maximum Draft: 5 ft 6 in Displacement: 44000 lbs Ballast: 12000 lbs Bridge Clearance: 62 ft 6 in Engines Engine 1: Engine Brand: Perkins Engine Type: Inboard Engine/Fuel Type: Diesel Engine Hours: 2311 Propeller: 3 blade propeller Drive Type: Direct Drive Engine Power: 85 HP Tanks Fresh Water Tanks: 2 (140 Gallons) Fuel Tanks: 2 (110 Gallons) Holding Tanks: 2 (25 Gallons) Accommodations Number of heads: 2

Hull and Deck

*HULL, KEEL, RUDDER, DECK, ETC *Solid fiberglass hull & teak deck *Full keel with attached skeg rudder *Primary steering - Hydraulic system *Second steering - S3G CPU, 12v ram *Ketch/Cutter rig, with four sails *Elevated teak bow sprit & pulpit *Custom davit, swim platform and boarding ladder. *4 large opening/reversing hatches *21 round opening brass portlights *4 large dorades on dorade boxes *36" stanchions, SS safety wires (with beautiful teak hand rail) *2 beautiful varnished teak seats (storage boxes on quarterdeck)

*12 v Boat & cargo lift/platform

*Ideal Windlass 2015

*Primary anchor: 66 lb Bruce *Primary chain: 200' 3/8" BBB *Primary rode: 150' 3/4" nylon
*Second anchor: 75 lb CQR/Plow *Second chain: 200' 3/8" BBB *Second rode: 150' 3/4" nylon
*Storm anchor: 75 lb Danforth *Oversized Triple gypsy electric windlass *Dodger, bimini, full enclosure (Dodger izenglass new 2006) *Sunbrella covers on all hatches *Ratlines on portside shrouds *11 ft Achillies tender *15 Hp 4 stroke Yamaha outboard engine

*Brightwork covers

*Winter Covers

*Awning 2015

Galley

*Galley located portside, fore & aft *Generous 15 sqft of counter space *Plenty of cabinets & pantry space *Generous headroom, light, ventilation *The galley has five opening ports *Nice Dickenson, LPG stove & oven *LPG control and safety switching (two 20 lb LPG tanks w guage/reg) *Two, deep, stainless galley sinks *Adler Barber, 6 SF regrigerator (top loading, w holding plates) (powered by engine & 110 VAC) *Adler Barber. 6 SF freezer space (front loading, holding plates) (powered by engine & 110 VAC) *Built-in (off counter) microwave (Microwave is a GE 1000 watt) *Built-in (off counter) toast oven

Electronics and Instrumentation

*Raymarine E-120 chart plotter/radar *Plotter interfaced to Nav station *Raymarine 4 KW, 48 nm radar (inter) *Raymarine radar antenna mizzen mast *Raymarine ST 60 wind speed instr. *Raymarine ST 60 depth instrument *Raymarine ST 60 speed/dist instr. *Raymarine ST 6001 Auto-pilot head *Raystar 125 exterior GPS antenna *Insulated backstay SSB antenna *Icom M602 command mike at helm *Masthead VHF antennas (main/mizzen) *Masthead standard windex (mainmast) *Hailer & fog horn on mizzenmast *Ritchie 5" binnacle compass *Television antenna on mizzen mast.

*2 Flat Screen TVs

*ELECTRONICS: NAV STATION & BELOW *Raymarine E-120 chart plotter/radar *Plotter interfaced to helm station *Raymarine E series interface box *Raymarine 4 KW, 48 nm radar (inter) *Raymarine E series remote control (Shows all data plus steers boat) *DSM digital fish finder, networked (3D bottom, fish, charts, aerials) *Navionics Platinum digital charts *Icom M602 25w VHF 2-way radio (w Command mike at helm station) *Ritchie 5" globe binnacle compass *Ben/Mar marine LF RDF receiver *Alpine AM/FM/CD/DVD stereo player *3 50 watt Alpine F200 amplifiers *Twelve HiFi speakers through boat *Toshiba DVD audio/movie player

*AIS Transmitter

Electrical

*Two 120 VAC, 30 amp circuits *Two 50' 30 amp, shore power cords *Main switches & circuit breakers *Meters & CB/distribution panel *Pro Mariner combination battery charger & 3000 watt inverter *12-14 VDC SYSTEM, (ONBOARD) *120 amp Balmar alternator & regulator *Meters & CB/distribution panel *3 Size 8-D 280 AH house batteries(06) *1 Group 27 100 AH start battery (06)

Engine and Mechanicals

*Perkins 4-236, 85 HP diesel, 2311 with Racor fuel filter/separator *Engine compartment insulated, w good engine access (front, port, starboard) *Kohler 8kw generator, 1897 hrs with Dahl fuel filter/separator *Electrical end replaced in 1995 *Generator compartment, insulated, good access from front & rear *AIR CONDITIONING/HEAT, ELECT PUMPS *1. CruiseAir reverse cycle, 16000 BTU air cond/heater - salon & fwd cabin *2. CruiseAir reverse cycle, 16000 BTU air cond/heater - galley & aft cabin *Rule auto bilge pump, 2500 GPH *Rule auto bilge pump, 1750 GPH *Rule auto bilge pump, 1500 GPH (2500 & 1750 staged, (high/low) *Manual bilge pump

*Sidepower Bow Thruster 2008

*12 V Spectra Watermaker Less than 50 hrs

Sails and Rigging

*Main & mizzen masts & booms are aluminum, w black Awlgrip (3/98) *Standing rigging, oversized, (3/98) *Norseman terminals, all wires, (3/98) *SAIL INVENTORY *Yankee - Good condition *130% Genoa - Good condition *Staysail - Good condition *Mainsail - Good condition *Mizzen - Good condition

*Mizzen Staysail

*Spinnaker 2000SF - Good condition

*Sunbrella covers for all sails *WINCHES: 8 OVERSIZED, SELF-TAILING *In Cockpit: 2 Hugh Barlow ST 36s *2 Cathay Indust ST 22s *Main mast: 2 Cathay Indust ST 24s *1 Lewmar #22 *Mizzen mast: 1 Lewmar ST 8 *2 Lewmar ST 16s *9 Dacron halyards replaced 1998 *5 Dacron sheets replaced 1998

Safety and Extras

*Plastimo 6 person life raft Certified 2015 (raft in canister and secured) *USCG required safety equipment *USCG approved type III PFD's (6) *USCG required flares, (Nov 2006) *USCG approved life ring *USCG required fire extinguishers *All navigation & deck lights *Custom Sunbrella main deck awning (awning w roll down side curtains) *SS and teak boarding/swim ladder *14' long robust wood boat hook *Extra loud engine alarms *1 Echomaster radar reflector *Bonding: All masts, stays, shrouds chain plates, stanchions, thru hulls all tanks, and engine are bonded. *All manuals instruments/equipment *Four brass oil lamps w chimneys

*New EPIRB 2015

NOTE: For more pictures contact broker.

Basic Information

Category: Cruising Sailboat

Model Year: 1984

Year Built: 1984

Country: United States

Dimensions

LOA: 47' 0" (14.33m)

LWL: 36' 0" (10.97m)

Beam: 13' 5" (4.09m)

Max Draft: 5' 6" (1.68m)

Clearance: 62' 6" (19.05m)

Speed, Capacities and Weight

Displacement: 44000 Pounds

Water Capacity: 140 Gallons

Holding Tank: 25 Gallons

Fuel Capacity: 110 Gallons

Accommodations

Total Cabins: 2

Total Heads: 2

Hull and Deck Information

Hull Material: Fiberglass

Engine Information

Manufacturer: Perkins

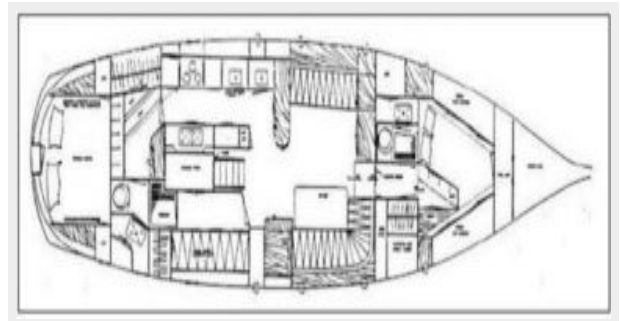
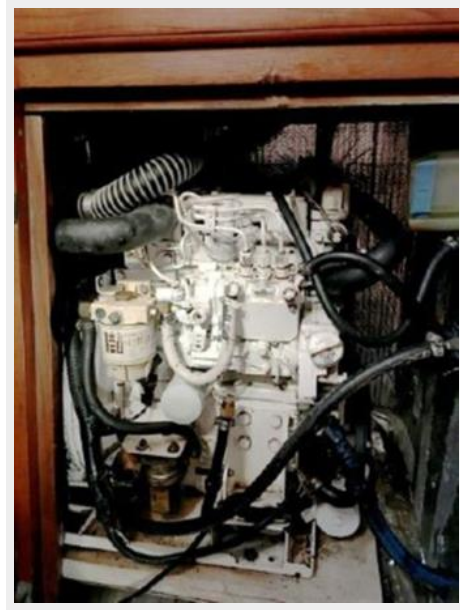
Engine Type: Inboard

Fuel Type: Diesel

PHOTOS







CONTACTS

Andrey Shestakov, leading yacht broker of the sales department of Shestakov Yacht Sales Inc. Shestakov Yacht Sales Inc., the official representative of the Miami/Fort Lauderdale FL headquarters.

Contact details

Email: andrey@shestakovyachtsales.com

Web: shestakovyachtsales.com/en/

Telephones

USA: +1(954)274-4435

Office hours

Monday – Saturday: **9:00 - 21:00** EDT

Sunday: **closed**

Address



Harbour Towne Marina, 850 NE 3rd St,
STE 213, Dania, FL 33004