

ESCAPADE OF LONDON — OYSTER YACHTS



Судостроитель: Oyster Yachts

Длина общая: 46' 8" (14.20m)

Год постройки: 2002

Модель: Sloop

Цена: ЦЕНА ЯХТЫ ПО ЗАПРОСУ

Местонахождение: United Kingdom

Купить Escapade of London — Oyster Yachts а также выбрать подходящую вам яхту из нашего каталога яхт вам поможет опытный яхтенный брокер Андрей Шестаков. На сегодняшний день компания Shestakov Yacht Sales Inc. имеет большое количество яхт в собственном списке продаж, а также тесно сотрудничает со всеми крупными яхтенными производителями по всему миру.

Для того чтобы купить яхту Escapade of London — Oyster Yachts а также проконсультироваться по любому вопросу связанному с покупкой, продажей, чартером яхт позвоните по телефону **+7(918)465-66-44**.

ОГЛАВЛЕНИЕ

ОГЛАВЛЕНИЕ	2
ХАРАКТЕРИСТИКИ	4
Обзор	4
Основная информация	4
Размеры	4
Размещение	4
Корпус и палуба	4
Информация о двигателе	5
ПОДРОБНОЕ ОПИСАНИЕ	6
Construction	6
DECK LAYOUT AND EQUIPMENT	6
RIG AND SAIL HANDLING	6
INTERIOR	7
ENTERTAINMENT	7
Engineering	8
Tankage and Plumbing	8
Electrics	8
Navigation and Communication	8
Safety	9
General	9
Исключения	9
Отказ от ответственности	9
ФОТОГРАФИИ	10
КОНТАКТЫ	13
Контактная информация	13
Телефоны	13
Время работы	13
Адрес	13

ХАРАКТЕРИСТИКИ

Обзор

Escapade of London is a fantastic example of the very popular Oyster 47 range. The 47 offers fantastic storage, plenty of living space, ideal for long distance short handed cruising or pottering around on local waters. She can be sailed short handed and with just a 2m draft, she can pretty much go anywhere. She has great sailing performance too! The current owner has used the boat predominantly on the East coast of England with occasional trips across the channel. the owner has kept the boat extremely well, and this shows the minute you step on board. Previously she has sailed into the Med and up to Scandinavia, but always with a careful owner and a fair wind. Escapade is beautifully finished with American Light oak joinery, with a teak chequered soleboard. The overall condition is extremely good. She provides 6 berths in 3 cabins, plus two settee berths in the saloon if required. the 47 also features a fantastic walk in engine room/workshop which is accessible from the cockpit and via a door inside next to the chart table. The owner has lavished the boat with all new sails, canvas work, electronics and a whole list of improvements and upgrades along the way. The owner is now selling due to a change of plans, and lack of time to use the boat. The boat is very sensibly priced and viewing is highly recommended.

Основная информация

Тип судна: Sloop

Модельный год: 2002

Год постройки: 2002

Страна: United Kingdom

Размеры

Длина общая: 46' 8" (14.20m)

Размещение

Всего кают: 3

Корпус и палуба

Материал корпуса: GRP/Wood

Информация о двигателе

Производитель: Volvo

ПОДРОБНОЕ ОПИСАНИЕ

Construction

1. CONSTRUCTION HULL NUMBER Oyster 47/29 HULL CONSTRUCTION GRP hull is laid up single skin with structural stringers and floors to Lloyds approved design specification. The stern design incorporates a bathing platform trimmed with teak slats and stainless steel steps for access to the stern deck. HULL FINISH Hull colour white with cove line and double boot top lines in standard Oyster blue. DECK CONSTRUCTION Moulded in GRP with balsa core. DECK FINISH Teak laid decks – refurbished 2010 (sanded and sikaflex replaced). Perforated aluminium toerail. KEEL High performance bulb (HPB) external lead keel. RUDDER Fully protected skeg-hung rudder. STERN DESIGN ‘Sugar scoop’ stern design with bathing platform trimmed with teak slats and stainless steel steps for access to the stern deck or counter stern. EURCD Built to comply with the requirements for Category A – Ocean.

DECK LAYOUT AND EQUIPMENT

2. DECK LAYOUT AND EQUIPMENT ANCHOR CQR 22kg (45lb) main anchor with 60m chain. Kedge anchor with chain / warp. WINDLASS Lewmar Ocean 3 vertical 12V electric anchor windlass. DECK ACCESS Stainless steel bathing ladder. HATCHES Acrylic two part washboard system. Lewmar alloy-framed deck hatches. Gebo alloy-framed portlights in coaming. Gebo opening hullports. CANVASWORK By Dolphin Sails New Sprayhood to main companionway, Colour: Blue – 2014. New Bimini, Colour: Blue – 2014. New Cockpit enclosure, including frames and zip off side and rear panels, Colour: Blue – 2014. DECK PLUMBING Hot and cold freshwater deck shower in transom locker. COCKPIT Teak-laid cockpit. COCKPIT TABLE Cockpit table – stainless steel framed and solid teak, with folding leaves. STEERING Pedestal mounted wheel with leather cover. OUTBOARD BRACKET Reinforced outboard motor bracket. GENERAL Oyster deck saloon profile. Stainless steel mooring and cockpit cleats. Stainless steel pulpit, pushpit, and gateway midship stanchions. Stainless steel grabrails atop deck saloon. Liferaft stowage built into pushpit. Stern quarter pushpit seats in teak and stainless steel. Lazarette locker. Gas locker for two bottles.

RIG AND SAIL HANDLING

3. RIG AND SAIL HANDLING MAST and RIGGING Sloop rigged – checked 2012. Selden anodised mast with in-mast furling. Solid rod kicker. Harken backstay adjuster. Standing rigging stainless steel 1 x 19mm wire. HEADSAIL FURLING Harken headsail furling. WINCHES By Lewmar, two-speed, self-tailing: 2 x 58 CEST primary winches. 1 x 30 CST mainsail furling winch by companionway. 1 x 30 CST multi use furling winch by companionway. 1 x 30 CST main halyard winch at mast. 1 x 40 CST genoa halyard winch at mast. SPINNAKER GEAR Single spinnaker pole stowed vertically on mast. SAILS By Parker & Kay: Main Technora double taffeta vantage membrane – August 2011. Genoa Tri-radial Pentex cruising laminate –

new 2012. By Gowen Ocean Cruising chute, 1.5oz radial design with squeezer - 2002

INTERIOR

4. INTERIOR GENERAL Six berths in three cabins, excluding the saloon. interior joinery finished in oak with Oyster 'millennium' styling. Designed to be modern and coordinated, whilst remaining practical and durable at sea. Essential features include sculpted fiddles and grabrails, 'shadow-gap' joints between panels and Oyster custom knobs for lockers and drawers. 'Chequer-board' style teak cabin sole. Surfaces in galley and heads in Formica Dust. Headlining in off-white vinyl. Upholstery – Alcantara Empire Green colour. Berth material in Sinclair Fabrics – Focus Aqua. Curtains/blind system to all cabins. Oceanair "blinds" to all deck hatches. 5 x Hella fans. **FORWARD** Forward with 2-cushion removable V-berths with under-berth stowage, a hanging locker and a **DOUBLE CABIN** pair of forward, overhead lockers. **PORT TWIN CABIN** To port with upper and lower berths, clothes lockers, a vanity unit and hanging locker. **FOREWARD HEADS** The two forward cabins share a WC compartment incorporating a Jabsco manual toilet, washbasin with Hans Grohe quality mixer taps, mirror, stowage lockers and a shower area with curtain, teak-planked Naval grating, and pressure balanced shower. **SALOON** Features an L-shaped settee area and table on the port side. To starboard is a two seater settee, which extends beneath the forward counter top into a "trotter box", forming a useful sea-berth with lee-cloth. The table is mounted on a substantial pedestal base with bottle storage, and has a matching fold-over leaf, supported by a removable strut that allows both sides of the saloon seating to be used for dining, and includes a fully-equipped bar with stowage for glasses in a locker. Stainless steel book racks to both sides. **NAVIGATION AREA** Forward-facing at the aft starboard end of the saloon, allowing the navigator to be comfortable whilst sailing without intruding into saloon space. The chart table can accommodate a halffolded full size chart. Book shelf and customized instrument display panel. **WORKSHOP** Accessed from behind chart table with oilskin hooks and access to engine bay. **GALLEY SINKS** Stainless steel sinks. **COOKER/HOB** Gimballed Force 10 cooker in stainless steel with four burners, grill and oven. **REFRIGERATOR** Front opening Technautics refrigerator and plenty of storage space. **ENGINE BAY** Access to engine bay. **OWNER'S STATEROOM** With a double berth offset from the centreline, a curved settee, vanity unit and hanging locker, with abundant drawer and locker space. Bookshelf. **EN SUITE HEAD/** To starboard incorporating a Jabsco manual toilet, washbasin with Hans Grohe quality mixer **SHOWER** taps, mirror, stowage lockers and a shower area with curtain, teak-planked Naval grating, and pressure balanced shower.

ENTERTAINMENT

5. ENTERTAINMENT AUDIO VISUAL SYSTEMS **SALOON** Samsung Ultra slim flat screen TV system, including marine TV antenna – 2011. **COCKPIT** JVC-XD-DV 7402 Stereo head unit with DVD and waterproof remote control within cockpit – 2011. Pair of waterproof cockpit loudspeakers.

Engineering

6. ENGINEERING ENGINE Volvo MD 22 4-cylinder diesel engine (55hp) – serviced 2012. ENGINE HOURS Engine hours: 2,345 @ January 2014. PROPELLER Max-Prop 3-bladed feathering propeller. ROPE CUTTER Ambassador rope cutter on shaft. ALTERNATORS 60A 14V alternator. Additional 60A 12V alternator. BOWTHRUSTER Sleipner tunnel-type bowthruuster, including eyebrow. STEERING SYSTEM Pedestal mounted wheel with leather cover.

Tankage and Plumbing

7. TANKAGE AND PLUMBING FUEL 500 litres approximately (110 imp/132 US gallons) in a GRP tank. WATER 650 litres approximately (143 imp/171 US gallons) in a GRP tank. HOT WATER From an insulated 54-litre (12 imp/14.2 US gallons) tank heated by the engine's heat exchanger, or by thermostatically controlled 220V, 2kW immersion heater. PRESSURISED HOT AND COLD FRESHWATER SYSTEM HOLDING TANKS Tektanks welded rigid plastic gravity fed tanks for both heads.

Electrics

8. ELECTRICS SHIP'S SUPPLY 12V. Additional panel for 3 circuit-breakers for retrofit of equipment. RINGMAIN 220V mains AC ring main with 3 double, 3-pin outlet sockets located as appropriate within the layout, using Clipsal sockets. OTHER ELECTRICAL 12V Dri-Plug at pedestal – 5A. SOCKETS Additional 12V plug at chart table – 10A max. BATTERIES Domestic: 4 x 6V "Fullriver" AGM batteries supplied 2011. Engine start: 1 x "Numax" 88Ah 12V – new 2012 BATTERY MANAGEMENT/INVERTER Mastervolt DAKAR Combi 12/60/1050 charger/inverter with Mastervolt Combi System control panel. Emergency link. SHOREPOWER 30A dockside power cable. Hubbell socket in transom INTERIOR LIGHTING Overhead lights. Reading lights. Flexible chart light. Two extra halogen lights with red lense covers as nightlights. EXTERIOR LIGHTING Aqua Signal bow and stern navigation lights. Tri-white anchor/navigation light at masthead.

Navigation and Communication

9. NAVIGATION AND COMMUNICATION COMPASSES S.I.R.S. Major 150mm diameter compass on pedestal. SAILING Raymarine ST 60. INSTRUMENTS Speed, depth, windspeed/direction at companionway console Multi function display at chart table GPS Raymarine Raystar 120 DGPS antenna for GPS information to instruments. RADAR/ Raymarine RL70C LCD radar/plotter with 4kW radome mounted at chart table with AIS. CHART PLOTTER/ AIS AUTOPILOT Autohelm ST7000 with ST6000+ control in cockpit. Control mounted at pedestal pod. WINDEX Windex at masthead VHF RADIO Icom M505 VHF at chart table including helm station comm and mike. With hailer/horn Function and cockpit

speaker and switch. SSB RADIO Wide copper strip from chart table to lazarette for retro fit of SSB radio. PC Nine-pin GPS serial connection for laptop computer from Z290. (Note – Laptop not included).

Safety

10. SAFETY LIFERAFT Lifeguard Forties 8-man liferaft. RADAR REFLECTOR Firdell Blipper radar reflector on mast. BILGE PUMPS Electric Jabsco Maxi Puppy 3000. Manual Whale Gusher 10. DECK SAFETY Horseshoe lifebuoys / with lights. Jonbuoy MOB recovery unit. Webbing jackstays. MOB button. Emergency tiller. FIRE EXTINGUISHERS Various including automatic fire extinguisher in engine bay

General

11. GENERAL RIB/DINGHY Dinghy – Make unknown. Tohatsu 4-stroke 4hp outboard motor – new 2013. WARPS AND FENDERS CROCKERY Oyster customised Wedgwood bone china crockery. CUTLERY Oyster customised Sheffield stainless steel cutlery. HEYCO MARINE TOOL KIT ASSORTED TOOLS, SPARES AND MANUALS

Исключения

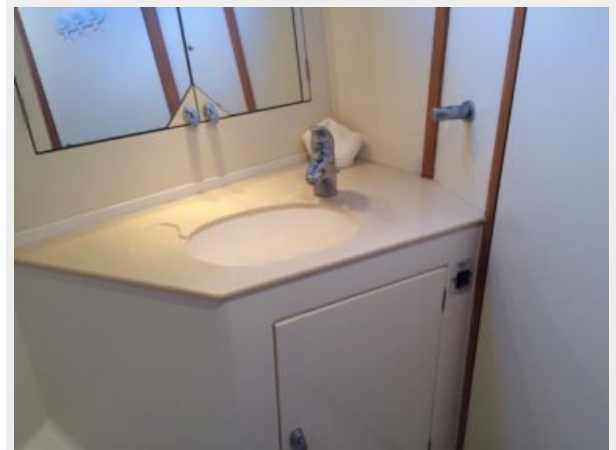
При продаже яхты исключаются личные вещи владельца.

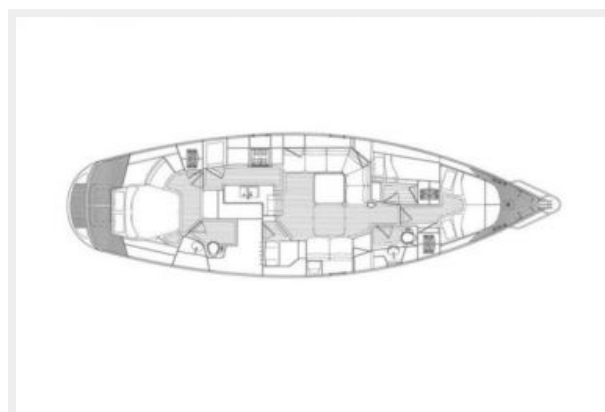
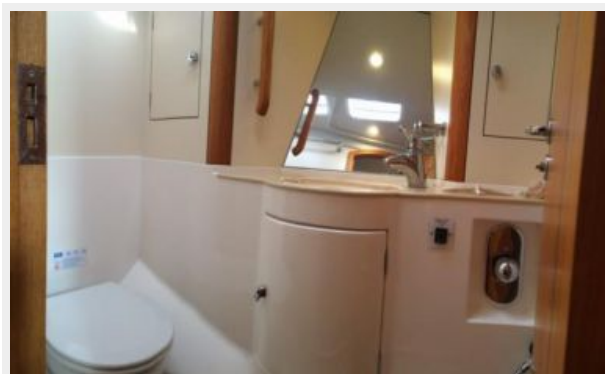
Отказ от ответственности

Компания предоставляет описание судна или яхты добросовестно, но не может гарантировать точность этой информации, а также не ручается за техническое состояние. Покупатель должен проинструктировать своих агентов или оценщиков исследовать представленную информацию более подробно, по собственному желанию. Продажа судна или яхты, изменение цены или снятие с продажи будет происходить без предварительного уведомления.

ФОТОГРАФИИ







КОНТАКТЫ

Андрей Шестаков (Andrey Shestakov) – ведущий яхтенный брокер отдела продаж яхт и судов компании Shestakov Yacht Sales Inc. Официальный представитель Shestakov Yacht Sales Inc. для русскоговорящих клиентов в центральном офисе компании в Майами/Форт Лодердейл/Флорида/США.

Контактная информация

Email: andrey@shestakovyachtsales.com

Web: shestakovyachtsales.com

Телефоны

Краснодарский край: **+7(918)465-66-44**

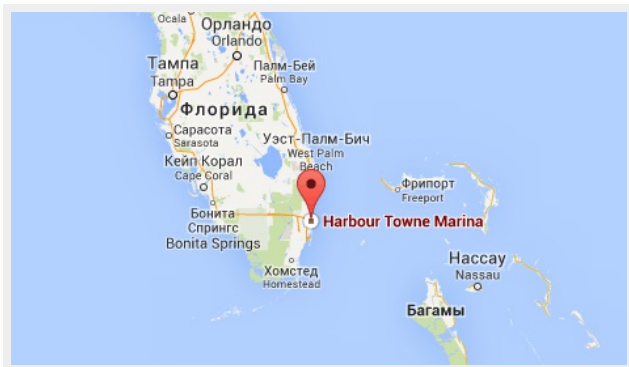
США, Майами, Флорида: **+1(954)274-4435**

Время работы

Понедельник – Суббота: **9:00 - 21:00**
EDT

Воскресенье: **Закрето**

Адрес



Harbour Towne Marina, 850 NE 3rd St,
STE 213, Dania, FL 33004