

NO NAME — SEA RAY



Builder: SEA RAY

Year Built: 2005

Model: Motor Yacht

Price: PRICE ON APPLICATION

Location: United States

LOA: 55' 0" (16.76m)

Beam: 16' 0" (4.88m)

Min Draft: 4' 3" (1.30m)

Max Draft: 4' 3" (1.30m)

Our experienced yacht broker, Andrey Shestakov, will help you choose and buy a yacht that best suits your needs **No Name — SEA RAY** from our catalogue. Presently, at Shestakov Yacht Sales Inc., we have a wide variety of yachts available on our sale's list. We also work in close contact with all the big yacht manufacturers from all over the world.

If you would like to buy a yacht **No Name — SEA RAY** or would like help answering any questions concerning purchasing, selling or chartering a yacht, please call **+1(954)274-4435**

TABLE OF CONTENTS

TABLE OF CONTENTS	2
SPECIFICATIONS	3
Overview	3
Basic Information	3
Dimensions	3
Speed, Capacities and Weight	3
Accommodations	4
Hull and Deck Information	4
Engine Information	4
DETAILED INFORMATION	5
Key Features & Upgrades	5
Exclusions	5
Disclaimer	5
PHOTOS	6
CONTACTS	11
Contact details	11
Telephones	11
Office hours	11
Address	11

SPECIFICATIONS

Overview

Here is your opportunity to purchase a Low Hour, Fresh Water from New, Sea Ray 550 Sedan. Unlike most 550's, she had the Hydraulic Swim Platform added like the later 58 Sedans. Her Navy Blue hull looks years Newer having only been in the waters of Lake Erie 4-5 months out of the year. Compare her to the 55's or 58's on the Coast and you will see there is no comparison!

*****Preliminary Listing -- More Details & Photos to Follow*****

Basic Information

Category: Motor Yacht

Sub Category: Flybridge

Model Year: 2005

Year Built: 2005

Country: United States

Vessel Top: Hardtop

Fly Bridge: Yes

Cockpit: Yes

Dimensions

LOA: 55' 0" (16.76m)

Beam: 16' 0" (4.88m)

Min Draft: 4' 3" (1.30m)

Max Draft: 4' 3" (1.30m)

Speed, Capacities and Weight

Displacement: 51500 Pounds

Water Capacity: 150 Gallons

Holding Tank: 68 Gallons

Fuel Capacity: 700 Gallons

Accommodations

Total Cabins: 3

Total Heads: 2

Hull and Deck Information

Hull Material: Fiberglass

Hull Color: Blue

Engine Information

Engines: 2

Manufacturer: MAN

Model: V8 900-CR

Engine Type: Inboard

Fuel Type: Diesel

DETAILED INFORMATION

Key Features & Upgrades

This 3 Stateroom Yacht comfortably sleeps six (6). Down the stairway forward to the aft is the full width master stateroom with private head and shower. Moving forward are the other two staterooms, VIP Stateroom completely forward and Guest Stateroom on the starboard side. Each stateroom, as well as the salon and the flybridge, have been equipped with TVs and DVDs.

- Hydraulic Swim Platform
- New Teak Decks in Cockpit & Swim Platform
- Raymarine VHF, Raymarine Autopilot
- Raymarine Color Radar
- Sea Ray Systems Monitor
- GPS / Plotter
- Bow Thruster
- Stern Thruster
- Microcommander controls
- Trintabs
- KVH Satellite TV
- Surround Sound Stereo on Bridge
- Compass

Exclusions

Owner's personal belongings.

Disclaimer

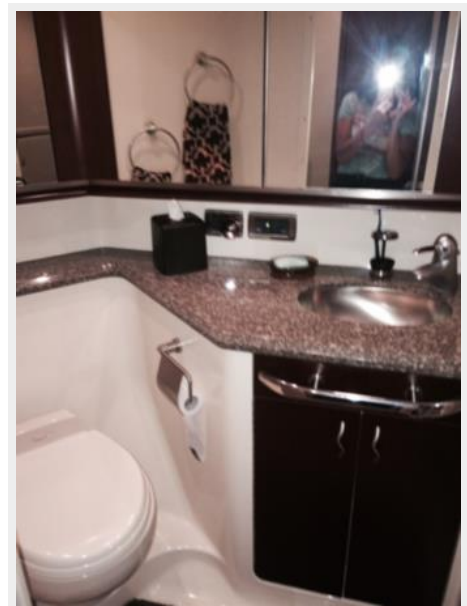
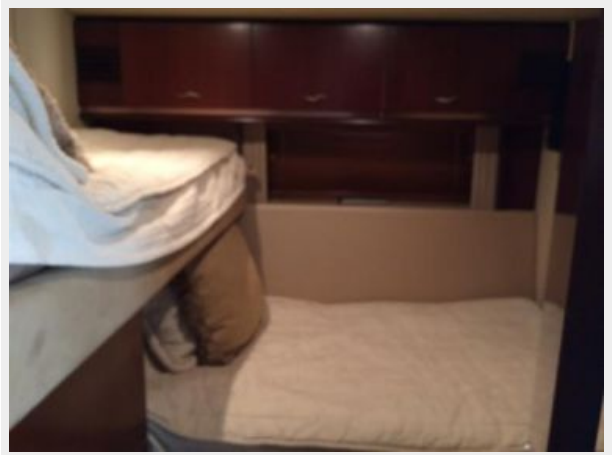
The Company offers the details of this vessel or yacht in good faith but cannot guarantee or warrant the accuracy of this information nor warrant the condition of the vessel. A buyer should instruct his representatives, agents, or his surveyors, to investigate such details as the buyer desires validated. This vessel or yacht is offered subject to prior sale, price change, or withdrawal without notice.

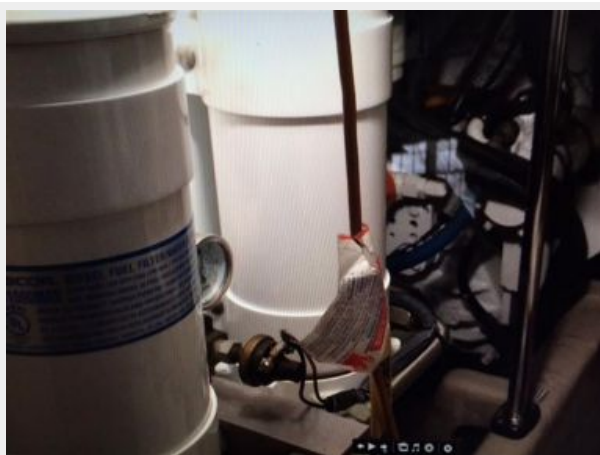
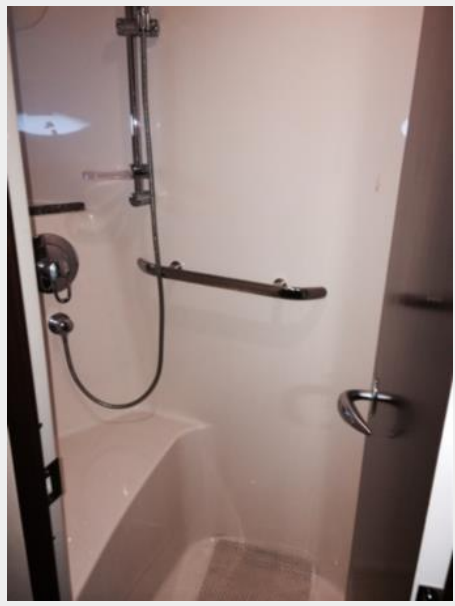
PHOTOS











CONTACTS

Andrey Shestakov, leading yacht broker of the sales department of Shestakov Yacht Sales Inc. Shestakov Yacht Sales Inc., the official representative of the Miami/Fort Lauderdale FL headquarters.

Contact details

Email: andrey@shestakovyachtsales.com

Web: shestakovyachtsales.com/en/

Telephones

USA: +1(954)274-4435

Office hours

Monday – Saturday: **9:00 - 21:00** EDT

Sunday: **closed**

Address



Harbour Towne Marina, 850 NE 3rd St,
STE 213, Dania, FL 33004