

NIGHT FALL — WATERLINE



Судостроитель: WATERLINE

Длина общая: 42' 0" (12.80m)

Год постройки: 1990

Модель: Экспедиционная яхта

Цена: ЦЕНА ЯХТЫ ПО ЗАПРОСУ

Местонахождение: United States

Купить **NIGHT FALL — WATERLINE** а также выбрать подходящую вам яхту из нашего каталога яхт вам поможет опытный яхтенный брокер Андрей Шестаков. На сегодняшний день компания **Shestakov Yacht Sales Inc.** имеет большое количество яхт в собственном списке продаж, а также тесно сотрудничает со всеми крупными яхтенными производителями по всему миру.

Для того чтобы купить яхту **NIGHT FALL — WATERLINE** а также проконсультироваться по любому вопросу связанному с покупкой, продажей, чартером яхт позвоните по телефону **+7(918)465-66-44**.

ОГЛАВЛЕНИЕ

ОГЛАВЛЕНИЕ	2
ХАРАКТЕРИСТИКИ	4
Обзор	4
Основная информация	8
Размеры	8
Размещение	8
Корпус и палуба	8
Информация о двигателе	8
ФОТОГРАФИИ	9
Pilothouse	9
At the Dock	9
Pilothouse 2	9
Pilothouse Dinette	9
Pilothouse looking port and aft	9
Pilothouse looking port and forward	9
Pilothouse looking starboard and forward	10
Saloon and galley	10
Deisel heater	10
Dinette in Saloon	10
Galley looking aft with desk	10
Galley	10
Master 2	11
Master	11
Master Head	11
Master looking to Galley	11
Saloon looking to day head	12
Saloon looking to Day Head 2	12
Day head into Engine room	12

Cockpit	13
Cockpit 2	13
Portside deck	14
Bow at Pilothouse	14
КОНТАКТЫ	17
Контактная информация	17
Телефоны	17
Время работы	17
Адрес	17

ХАРАКТЕРИСТИКИ

Обзор

Pilothouse, Electronics & Navigation

- COMNAV 2001 Autopilot
- COMNAV Rudder angle indicator
- 7" COMPUNAV compass
- FURUNO depth sounder
- FURUNO 1830 Radar
- MICROLOGIC ML250 GPS
- TOSHIBA lap top with electronic charts
- STANDARD HORIZON VHF (linked to GPS for DSC distress calling)
- STANDARD HORIZON LH5 loud hailer
- Water and Fuel tank Monitoring system
- (3) window fans
- (3) windshield wipers
- Capt.'s chair
- Screens for the windows
- (2) opening windows
- (3) reading lights
- 6' 3" headroom
- 6' 1" long convertible double berth

Up (1) step from the aft deck is the Pilothouse, cruising central for captain and crew of *NIGHTFALL*. With over a dozen fixed windows you have an abundance of light and a 360 degree view. A long L-shaped settee with storage below and a solid slab pine table easily accommodates (4) people. Opposite the settee to port is the chart table with (2) drawers and locker below. Forward is a comfortable helm chair with console/brow that runs across the forward end of the Pilothouse for the electronics and navigation instruments. The starboard side surface lifts providing chart storage with (2) drawers and locker below. Fishing pole storage is overhead.

Accommodations

The main Saloon, Galley and Master stateroom are down (4) steps from the Pilothouse. There are (3) large fixed ports on each side of the Saloon bringing light and the view into the area including the Galley. The dinette table and L-shaped settee are to port and the Galley is to starboard. The settee is L-shaped with book shelves at the aft end. Easily accessed storage is below all of the settee's cushions. The day Head and Engine Room access is aft of the Saloon to Port. Forward of the Galley is a DICKINSON Antarctic diesel stove.

The Master stateroom is all the way forward. The large V-berth has a custom mattress, and ample storage for clothing and personal items. A built-in dresser is aft of the berth on the starboard side. There are (5) drawers and a hanging locker in the dresser. (4) drawers and (2) large lockers are under the aft end of the berth. A shelf is located over the forward end of the berth. The ensuite Head/Shower is to port and aft in the cabin. There is a sink with hot & cold pressure water, shower and storage cabinet with mirrored front. (3) opening port lights + (1) in the head.

All floors in the living space are End Grain Yellow Cedar. Ventilation is provided by (6) opening ports, (2) opening hatches and (3) Hella two-speed fans. The Engine room is vented with a large hatch that also provides a second means of entrance. There are reading lights and spot lighting fixtures throughout the boat with (2) tubular lights over the galley counters.

Galley & Saloon

- FORCE 10 (3) burner stove / oven with MARINETIC LP sensor
- GE microwave
- Deep Stainless Steel sink
- ADLER-BARBOUR Freezer / Refrigerator (2011)
- (2) overhead lights
- Lots of good storage
- (4) Portlights + (1) each in galley and aft head
- 6' 6" headroom

The large galley is U-shaped with solid yellow cedar counters. The stove is located in the forward counter with (4) drawers below the counter and (1) long drawer under the stove. The drawers are a unique design and can be accessed from either the front or the aft side of the counter. A small chart table folds down from the forward side of this counter. The deep stainless steel sink is set in the outboard counter, and there are both hot and cold pressure water and a fresh water foot pump. There is a locker below the sink. The freezer is in the corner of the aft counter with refrigerator below the counter. The refrigeration is both AC and DC powered. Two large overhead lockers are above the aft section with lots of room for dishes, glassware and stores. The light from the butterfly hatch in the middle of the salon adds to the brightness of the interior.

Engine & Mechanical

- Economical 135 hp LUGGER / JOHN DEERE L6314D diesel (4735 hrs) only burns 1.1 gallons an hour doing 7k @ 1350 rpm
- Single lever MORSE controls
- Fuel filtration and transfer system
- Day fuel tank with
- HALON fire suppression system
- Dripless shaft gland
- Trolling valve
- A lot of room for storage that is easy to access and organize.

The full size engine room is located under the Pilothouse and entered through the aft head or cockpit hatch. Access is available to all sides of the engine with the aft section of the engine room providing ample storage for engine spares and supplies.

Electrical Equipment

- 30 amp shore power
- AQUA MARINE "My-T" Gen 12vDC generator, 6hp
- 12 volt DC System with 100 amp charger
- AMPLE POWER 105 amp alternator with AMPLE Deep Cycle regulator
- MAGNUM ENERGY 2000w Pure sine-wave Inverter (NEW 2010) and smart battery charger
- HEART Echo charger for engine start battery
- (4) - L16 house batteries (800 amp)
- (1) - 4 D engine start battery
- 110 AC System
- Shore power cord.
- (2) NEW 190w solar panels with the TRI-STAR MPPT Solar Charger with remote

(The owners found that even on a semi-cloudy day the Solar Panels were able to get roughly 15amp/hour (half their rating). They also tracked that they only used about 45 amps per day

mostly for the refrigerator/freezer.)

Hull and Deck

- Steel hull (1/4") and deck (with 3/4" teak overlay in cockpit)
- Wood panel and timber house
- Mast with stabilizing sail and jib
- Paravane stabilizers
- Large rudder for improved maneuverability
- Hydraulic drum anchor windlass
- 55 lb Fast-Set DELTA anchor
- 100' of 3/8" galvanized chain with 350' of 3/8" stainless steel cable
- Hydraulic anchor wash down
- Spreader lights
- Dinghy davits on Transom
- 10' AVON RIB
- 15hp MERCURY outboard 2-stroke

Additional Features

- ARC 406 EPIRB
- Windshield wipers (3)
- Fantail awning
- Screens for all windows and door
- Rail mounted BBQ
- PENN downrigger and rail mounting

NIGHTFALL is well equipped and ready for her next voyage up the Inside Passage. When you drop anchor at the end of the day, she will definitely capture the interest of the other cruisers in the anchorage.

Overview Features *NIGHTFALL*, a steel pilot house trawler, designed by William (Bill) Garden and built by Waterline Yachts in Sidney, British Columbia. She is a true NW boat combining the skill of her renowned designer with the craftsmanship of her highly regarded builder. An Alaskan veteran, she has proven herself worthy of her pedigree time and again.

While *NIGHTFALL*'s design is strong, capable and in the tradition of the northwest fishing trawler, her other attributes include significant cruising economy and comfort. Her 135hp LUGGER / JOHN DEERE diesel engine is extremely efficient burning 1.1 GPH at 7 knots, great economy at a reasonable speed. Her warm pilothouse with L-shaped settee provides a cozy 360 degree view to the surrounding seascape as well as the controls and instrumentation to keep her on course. Down below her light filled main Saloon is spacious with a Galley that will meet the needs of the most demanding chef. The large Master stateroom with ensuite Head and convertible Pilothouse settee provide good accommodations for the cruising couple and

occasional guests. Throughout the boat, there is plenty of storage for all the spares and stores necessary for long term voyages.

Excluded Items

All staging items.

Disclaimer

The Company offers the details of this vessel in good faith but cannot guarantee or warrant the accuracy of this information nor warrant the condition of the vessel. A buyer should instruct his agents, or his surveyors, to investigate such details as the buyer desires validated. This vessel is offered subject to prior sale, price change, or withdrawal without notice.

Основная информация

Тип судна: Экспедиционная яхта

Модельный год: 1990

Год постройки: 1990

Страна: United States

Размеры

Длина общая: 42' 0" (12.80m)

Размещение

Всего кают: 1

Корпус и палуба

Материал корпуса: Steel

Информация о двигателе

Производитель: John Deere

ФОТОГРАФИИ

At the Dock



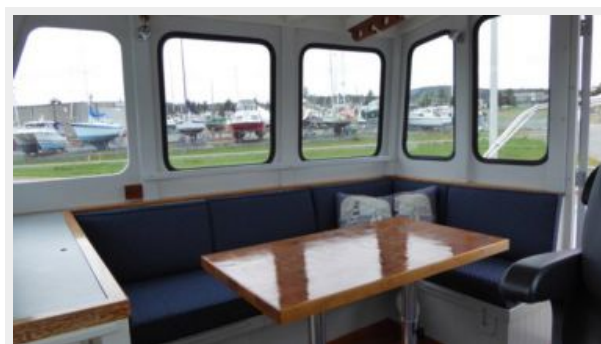
Pilothouse



Pilothouse 2



Pilothouse Dinette



Pilothouse looking port and aft



Pilothouse looking port and forward



Pilothouse looking starboard and forward



Saloon and galley



Dinette in Saloon



Deisel heater



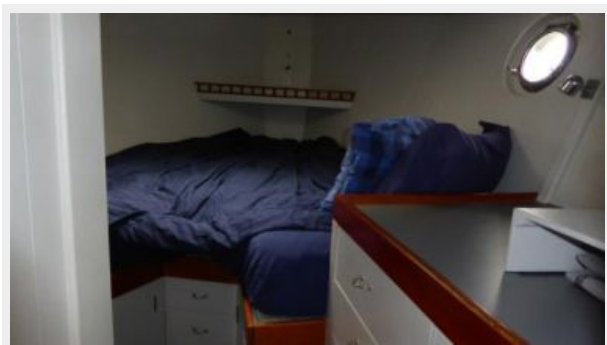
Galley looking aft with desk



Galley



Master



Master 2



Master Head



Master looking to Galley



Saloon looking to day head

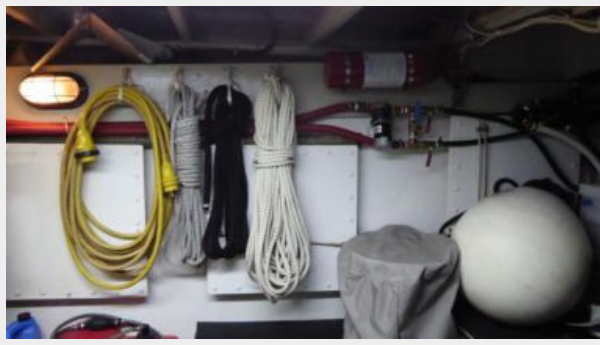


Saloon looking to Day Head 2



Day head into Engine room





С cockpit

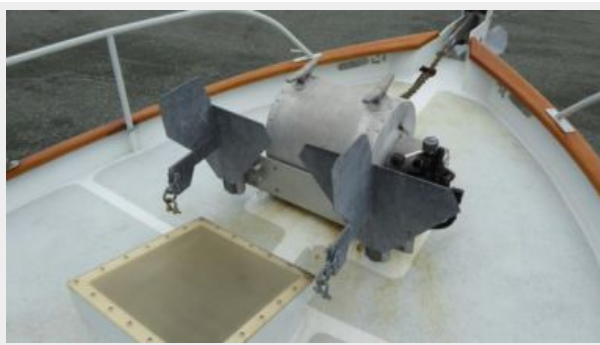
С cockpit 2

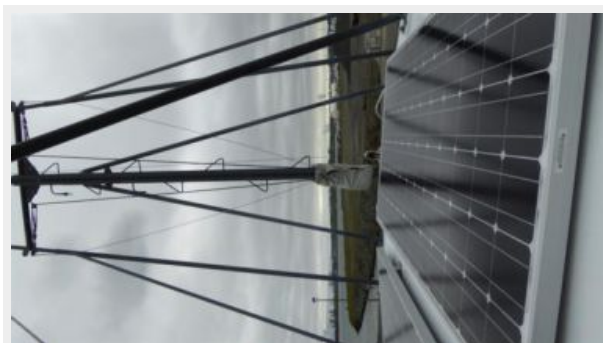


Portside deck



Bow at Pilothouse







КОНТАКТЫ

Андрей Шестаков (Andrey Shestakov) – ведущий яхтенный брокер отдела продаж яхт и судов компании Shestakov Yacht Sales Inc. Официальный представитель Shestakov Yacht Sales Inc. для русскоговорящих клиентов в центральном офисе компании в Майами/Форт Лодердейл/Флорида/США.

Контактная информация

Email: andrey@shestakovyachtsales.com

Web: shestakovyachtsales.com

Телефоны

Краснодарский край: **+7(918)465-66-44**

США, Майами, Флорида: **+1(954)274-4435**

Время работы

Понедельник – Суббота: **9:00 - 21:00**
EDT

Воскресенье: **Закрето**

Адрес



Harbour Towne Marina, 850 NE 3rd St,
STE 213, Dania, FL 33004