

FLYING DRAGON — ADMIRAL - THE ITALIAN SEA GROUP



Builder: Admiral - The Italian Sea Group

Year Built: 2014

Model: Motor Yacht

Price: PRICE ON APPLICATION

Location: France

LOA: 146' 4" (44.60m)

Beam: 28' 3" (8.60m)

Max Draft: 6' 3" (1.90m)

Cruise Speed: 15 Kts. (17 MPH)

Max Speed: 18 Kts. (21 MPH)

Our experienced yacht broker, Andrey Shestakov, will help you choose and buy a yacht that best suits your needs **FLYING DRAGON — Admiral - The Italian Sea Group** from our catalogue. Presently, at Shestakov Yacht Sales Inc., we have a wide variety of yachts available on our sale's list. We also work in close contact with all the big yacht manufacturers from all over the world.

If you would like to buy a yacht **FLYING DRAGON — Admiral - The Italian Sea Group** or would like help answering any questions concerning purchasing, selling or chartering a yacht, please call **+1(954)274-4435**

TABLE OF CONTENTS

TABLE OF CONTENTS	2
SPECIFICATIONS	3
Basic Information	3
Dimensions	3
Speed, Capacities and Weight	3
Accommodations	3
Hull and Deck Information	3
Engine Information	4
DETAILED INFORMATION	5
Detailed Description	5
Exclusions	10
Disclaimer	11
PHOTOS	12
CONTACTS	16
Contact details	16
Telephones	16
Office hours	16
Address	16

SPECIFICATIONS

Basic Information

Category: Motor Yacht

Model Year: 2014

Year Built: 2014

Country: France

Dimensions

LOA: 146' 4" (44.60m)

LWL: 123' 9" (37.71m)

Beam: 28' 3" (8.60m)

Max Draft: 6' 3" (1.90m)

Speed, Capacities and Weight

Cruise Speed: 15 Kts. (17 MPH)

Cruise Speed Range: 1000

Max Speed: 18 Kts. (21 MPH)

Gross Tonnage: 439 Pounds

Water Capacity: 1994.4989926 Gallons

Fuel Capacity: 10957.85671696 Gallons

Fuel Consumption: 211.3376416 Gallons

Accommodations

Total Cabins: 5

Sleeps: 10

Captain Cabin: True

Crew Cabin: 4

Crew Sleeps: 8

Hull and Deck Information

Hull Material: Aluminum

Deck Material: Teak

Exterior Designer: Luca Dini Design

Interior Designer: Admiral Centro Stile

Engine Information

Engines: 3

Manufacturer: MTU

Model: 16V 2000 M93

Engine Type: Inboard

DETAILED INFORMATION

Detailed Description

TYPE	Motor		
HULL NO.	566		
BUILDER	Admiral		
NAVAL ARCHITECT	Admiral		
EXTERIOR DESIGN	Luca Dini Design		
INTERIOR DESIGN	Admiral Centro Stile		
YEAR	2014		
CLASSIFICATION	ABS		
CONSTRUCTION	Aluminium Hull & Superstructure, Teak Decks		
CREW	8		
FLAG	Marshall Islands		
ENGINES	3 x 2,100 Hp / 1,765kW MTU 16V 2000 M93		
GT	439		
NT	139		
LOA	44.60m / 146'4"		
LWL	37.71m / 123'8"		
BEAM	8.60m / 28'3"		
DRAFT	1.90m / 6'3"max		
	SPEED	CONSUMPTION	RANGE
CRUISING SPEED	16 knots	800 litres per hour	710 nm
MAXIMUM SPEED	20 knots	1,250 litres per hour	570 nm
ACCOMMODATION	10 x Guests in 5 cabins		
CREW	8 x Crew in 4 cabins		
FUEL	41,480 litres / 10,959 US gallons		
FRESH WATER	7,550 litres / 1,994 US gallons		
LUBE OIL	410 litres / 108 US gallons		
DIRTY OIL	380 litres / 100 US gallons		
GREY / BLACK WATER	570 litres / 150 US gallons		

MASTER STATEROOM The Owner's suite is particularly opulent. Located forward on the main deck, this cabin features a King size bed, large His & Hers bathrooms as well as expansive windows which provide spectacular ocean views. The size of the windows also ensures that the Owner's suite is bathed in natural light, giving the whole space a light, airy and welcoming feel. In addition, this area also comes with a balcony opening on the right side of the room complete with small table and chairs. This gives the Owner's the opportunity to enjoy fresh air and ocean views in an exclusively private setting for a morning coffee or evening night cap.

GUEST STATEROOMS Accommodation on board is provided for up to ten guests in total in five luxurious cabins. The four guest cabins are located on the lower deck, and provide a spacious and sophisticated space which allows for privacy and relaxation. Consisting of two double cabins and two twin cabins, all of the rooms feature dark wood furniture which acts as a beautiful contrast with the light coloured carpets. The contrast is further enhanced by red onyx borders and leather headboards, which also add a splash of sumptuous colour to the environment. Furthermore in the twin cabins extra Pullman berths are provided.

DINING ROOM The Dining area consists of a large, dark wood table seating up to 10 people in the highest luxury and comfort. The design of the table and surrounding areas provides guests with a space to enjoy the very best of fine dining in absolute style.

MAIN SALOON On the main deck, the huge space is impressive, providing all guests on board with plenty of room for socialising, relaxing and entertainment. The Main Saloon is a mixture of dark wood furniture and joinery combined with luxurious upholstery and beige lacquered ceilings. The splashes of colour come from decorative details such as the red, plush cushions on the large armchairs and sofas, and echo the colour scheme in the accommodation areas. Large windows line the room, filling the area with natural light and providing fantastic views for guests to enjoy. Rounding off the sophisticated and luxurious feel to the saloon is the floor, made of Tabu Lati chocolate coloured parquet.

MAIN DECK Leading outside from the Main Salon and Dining area, the main deck also features large spaces and ample, welcoming seating areas, where wooden, low tables are found in the centre. The shaded, sophisticated areas give guests on board another space to enjoy the company of friends and family in a calm, refined environment. On the foredeck, an intimate space can be found, complete with a seating area.

SUNDECK The sun deck is actually a terrace overlooking the sea, and includes a large sunbathing area and Jacuzzi as well as a table to enjoy al-fresco dining whilst overlooking the ocean. The table is shaded, and features a large Yin-Yang design on the ceiling, in keeping with the traditional Chinese dragon design on the side of the boat designed by Dobroserdov Design. This area provides the ideal space to enjoy relaxation to its fullest with comfy, large sofas located behind the dining table, whilst the large bar corner ensures that the space can also be used to entertain and unwind with friends. An identical bar corner is also found in the main deck cockpit, complete with a white onyx backlit top and front, with another comfortable seating area.

CREW Accommodation for a crew of up to eight is also catered for. Three double cabins and a large Captain's cabin are located forward on the lower deck, where the main galley is also found.

ENGINES

3 x 2,100 Hp / 1,765kW; MTU 16V 2000 M93

ENGINE HOURS	Starboard: 580 hours (all June 2016) Port: 594 hours Centre: 561 hours
GEARBOX	3 x ZF3060 ratio 2.500:1
PROPULSION	Kamewa water Jets
PROPELLERS	2 x Kamewa 71S (Port, Starboard) 1 x Kamewa 63GS (Centre)
STEERING SYSTEM	2 x Kamewa 71S (Port, Starboard)
EMERGENCY STEERING	2 x Kamewa 71S (Port, Starboard)
HELM STATIONS	3 x Control stations on Bridge, Fly & Remote
STABILISERS	Stabilis Electra SE120
BOWTHRUSTER	HydroSystems BT80S; Hp: 116lt@294 bar
GENERATORS	2 x Kohler 80EF0ZD 80kW 220/380V 3-phase 50Hz 200 litres per day consumption
GENERATOR HOURS	Gens #1:2,020 (both March 2016) Gen #2: 1,703
SHORE POWER	Eekels/TBI; SPC II HYBRiD 48kW 3-phase 190-520; 40-70Hz
BATTERIES	
MAIN ENGINE START SERVICE	2 x 2 AMG 160 dual charged 4 x AMG 225 MaterVolt charger
GENERATOR START EMERGENCY	2 x AMG 166 dual charged ; Master Volt charger 2 x AMG 125 Master Volt charger
AIR CONDITIONING	Dometic/Condaria 360000 BTU/H
INTERIOR FRESH AIR	24 x Dometic/Condaria UTA T-3000
AIR COMPRESSOR	Gianneschi CT2/330
WATER MAKER	2 x Idromar MC8
WATER SYSTEM	Tecnomar
TOILET SYSTEM	WC Tecma, Sanisplits
SEWAGE SYSTEM	Hamann
FUEL SEPARATOR	Westfalia Separator OTC3 Racor 751000MAX 3 x duplex
BILGE WATER FILTRATION	DVZ 150FSU-Oilchief; 0.15 m3 per hour
GYRO COMPASS	Simrad
AUTOMATIC PILOT	Simrad
DEPTH SOUNDER	Furuno

SONAR	Furuno
RADAR	1 x Furuno FR2117 Range: 48 1 x Furuno Navnet Range: 48
AIS	Furuno
DGPS	Furuno
GPS	Furuno GP 150
CHART PLOTTER	Furuno, Transas 4000 software
NAVTEX	Furuno NX-700
SPEED INDICATOR	Furuno
WIND INSTRUMENTS	Furuno weather station
SEARCHLIGHTS	Sanshin HR 52
SATCOM	Furuno Felcom 18
VHF	Furuno FM-8900S fixed 3 x Mc Murdo M5 handheld
SSB	Furuno FS 1575
CELLULAR PHONES	Nokia
TELEPHONE SYSTEM	Mobile
INTERCOM	Jotron 3100; UHF
ICOM	6 x Netlogic hand radios
OFFICE EQUIPMENT	3 x Acer Laptops Brother 8610 Printer
AFT WARPING CAPSTANS	2 x Maxwell VC4000
ANCHORS	2 x Maxwell VWC 8000
ANCHOR CHAINS	2 x 120m chains
SIDE BOARDING GANGWAY	Hydraulic
JACUZZI	1 x 6 Person Jacuzzi on Sundeck

- 7 x Samsung TV's in all Guest Cabins, Saloon & Aft Deck
- Lavia Central Ship's Audio & Video systems

GALLEY

- 1 x Miele Range KM6340
- 1 x Steam Miele Oven
- 1 x Normal Miele D66401
- 2 x Miele Fridges CS1212i
- 1 x Miele Grill CS1312BG
- 1 x Miele Microwave H6800BM
- 1 x Miele Freezer F9122Vi-I

- 1 x Miele Dishwashers G7856
- 1 x Miele Maserator; compact 200
- 1 x IAG 150 Extraction

ADDITIONAL EQUIPMENT

- 1 x Miele Fridge K35422ID
- 1 x Miele Microwave H6800BM
- 1 x Miele Freezer F9122Ui-1
- 1 x Hoshizaki Icemaker IM21 CNE
- 1 x Miele Dishwasher 67856
- 1 x Eurocave Wine cooler Compact 59
- 1 x Miele Coffee Machine CVA6401

LAUNDRY

- 2 x Miele-PW6065 Vario
- 2 x Miele-PT 7135c Vario
- 1 x Iron

- 1 x Miele Fridge K9122Ui
- 1 x Miele Microwave 6800BM
- 1 x Miele F9552
- 1 x Dumbwaiter; crew mess/pantry

SAFETY

- 4 x Liferrafts: EV M10 10 persons
- 4 x Liferings: Viking
- 1 x EPIRBS: Mcurdo G5
- 12 x Flares: Albatross
- Medical (Firstaid): Oxygen, defib, medicines etc.

SECURITY

- Monitors on Bridge, Crew mess, ECR

FIRE FIGHTING

- 42 x Detectors: Various/smoke, heat, gas
- 1 x Fixed CO2 Fire System: Minimax/Engine room
- 5 x Portable CO2
- 40 x Fire Extinguishers
- 2 x Seawater Firefighting: Main (ER) and Emergency (Garage)
- 2 x Asbestos Firefighting Suits: Full kit located in Firelocker FWD

TENDERS

- 1x 5.36m Castoldi Jet Tender 17 with Yanmar 4BY 180Hp engine

WATER SPORTS

- 1 x 3.35m Yamaha Waverunner VX Deluxe 2014 with 1052 CC 110Hp engine
- 1 x Sea Bob Cayago F7
- 1 x 2.24m Yamaha Superjet with Yamaha 72Hp engine
- 2 x Lagoon 2 inflatable kayaks
- 1 x 150cm Pair of JobeWater ski's

DIVING

- 4 x Scuba diving bottles & regulators
- 1 x Aerotecnica MCH-6 dive compressor
- 10 x Masks & snorkels
- 10 x Sets of fins
- 3 x Wetsuits

GYM

- ProForm Endurance S7
- 3 x Exercise mats

FLYING DRAGON is an all-aluminium build, typical for a mid-performance planing yacht. Launched in 2014, FLYING DRAGON combines stylish Italian style with an oriental flair. Her long, straight sheer is broken by the angular cutaway in the bulwarks providing ample natural light in her large, open-plan main saloon and indoors alfresco dining thanks to floor to ceiling sliding doors. FLYING DRAGON boasts a sumptuous but elegant interior, which uses an array of interesting materials from bronze, gloss macassar, lacquered tabu-lati wood, silk carpets and eel, iguana and nabuk skins, to a variety of stone including white and red onyx, Noir St Laurent marble, Aqua Azul Blue Jeans marble, and Calacatta marble. Having just finished her warranty works, FLYING DRAGON is a successful charter yacht sold in A1 condition by a motivated Seller.

- Striking Luca Dini exterior design
- Sumptuous and elegant interior
- Large windows and high ceilings throughout
- Full-width Master cabin with private drop down balcony
- Technogym and His & Hers bathrooms in Master cabin
- 4 Large Guest cabins
- Spacious Beach club
- Huge open sundeck complete with Spa pool, 12 person dining table, lounge areas & full bar
- Successful charter yacht

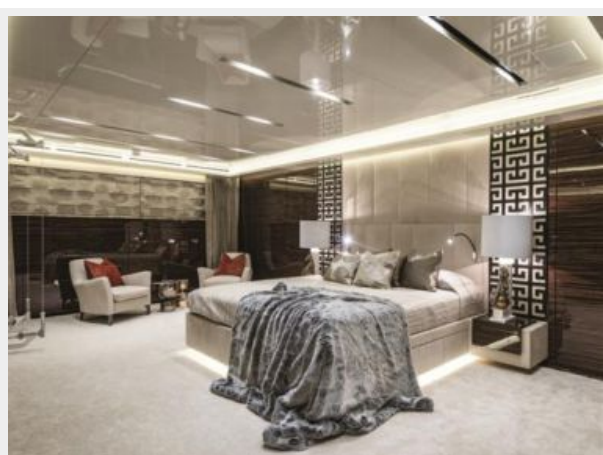
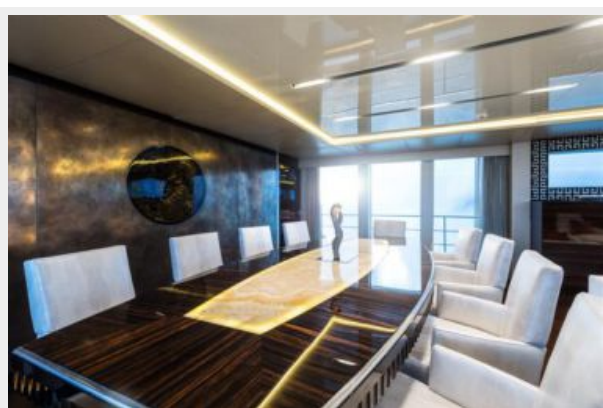
Exclusions

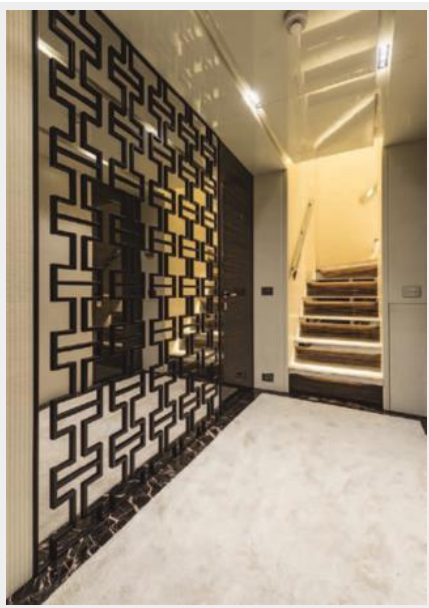
Owner's personal belongings.

Disclaimer

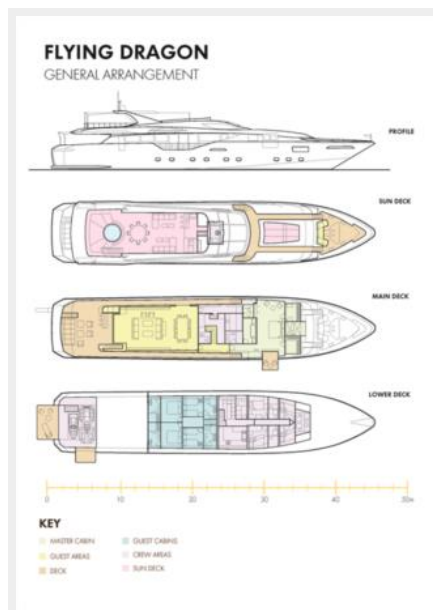
The Company offers the details of this vessel or yacht in good faith but cannot guarantee or warrant the accuracy of this information nor warrant the condition of the vessel. A buyer should instruct his representatives, agents, or his surveyors, to investigate such details as the buyer desires validated. This vessel or yacht is offered subject to prior sale, price change, or withdrawal without notice.

PHOTOS









CONTACTS

Andrey Shestakov, leading yacht broker of the sales department of Shestakov Yacht Sales Inc. Shestakov Yacht Sales Inc., the official representative of the Miami/Fort Lauderdale FL headquarters.

Contact details

Email: andrey@shestakovyachtsales.com

Web: shestakovyachtsales.com/en/

Telephones

USA: +1(954)274-4435

Office hours

Monday – Saturday: **9:00 - 21:00** EDT

Sunday: **closed**

Address



Harbour Towne Marina, 850 NE 3rd St,
STE 213, Dania, FL 33004