

## PERSISTENCE — RYBOVICH



**Судостроитель:** RYBOVICH

**Год постройки:** 2009

**Модель:** Катер для спортивной рыбалки

**Цена:** **ЦЕНА ЯХТЫ ПО ЗАПРОСУ**

**Местонахождение:** United States

**Длина общая:** 78' 0" (23.77m)

**Ширина:** 21' 0" (6.40m)

**Мин. осадка:** 5' 0" (1.52m)

**Крейс. скорость:** 37 Kts. (43 MPH)

**Макс. скорость:** 45 Kts. (52 MPH)

Купить **Persistence — RYBOVICH** а также выбрать подходящую вам яхту из нашего каталога яхт вам поможет опытный яхтенный брокер Андрей Шестаков. На сегодняшний день компания **Shestakov Yacht Sales Inc.** имеет большое количество яхт в собственном списке продаж, а также тесно сотрудничает со всеми крупными яхтенными производителями по всему миру.

Для того чтобы купить яхту **Persistence — RYBOVICH** а также проконсультироваться по любому вопросу связанному с покупкой, продажей, чартером яхт позвоните по телефону **+7(918)465-66-44**.

# ОГЛАВЛЕНИЕ

---

ОГЛАВЛЕНИЕ	2
ХАРАКТЕРИСТИКИ	7
Основная информация	7
Размеры	7
Скорость, вместимость и масса	7
Размещение	7
Корпус и палуба	7
Информация о двигателе	8
ПОДРОБНОЕ ОПИСАНИЕ	9
Accommodations/Layout	9
Salon	9
Galley	9
Entertainment Center	9
Day Head	9
Companionway	10
Master Stateroom	10
Master Stateroom Head	10
VIP Stateroom	10
VIP Stateroom Head	11
Guest Stateroom, Port	11
Guest Head, Port	11
Crew/Guest Cabin	11
Crew/Guest Head	11
Tackle Room/Crew Quarters	11
Flybridge	12
Electronics	12
Tuna Tower	12
Tower Electronics	12

Fishing Equipment	13
Cockpit	13
Machinery Space	13
Engine Room	14
Deck/Hull	14
Performance Information	14
Remarks	14
Исключения	15
Отказ от ответственности	15
<b>ФОТОГРАФИИ</b>	<b>16</b>
Salon	16
Salon	16
Salon	16
Salon	16
Salon	17
Salon	17
Day Head	17
Day Head	17
Galley	18
Galley	18
Galley	18
Galley	18
Dinette	18
Laundry	18
Master Stateroom	19
Master Stateroom	19
Master Stateroom	19
Master Stateroom	19
Master Stateroom	19

Master Stateroom Head	19
Master Stateroom Head	20
Master Stateroom Head	20
Forward Stateroom	20
Forward Stateroom	20
Forward Stateroom	21
Forward Stateroom	21
Forward Stateroom Head	21
Forward Stateroom Head	21
Forward Stateroom Head	22
Port Guest Stateroom	22
Port Guest Stateroom	22
Port Guest Stateroom	22
Port Guest Head	23
Starboard Guest/Crew Stateroom	23
Starboard Guest/Crew Stateroom	23
Starboard Guest/Crew Stateroom	23
Starboard Guest/Crew Head	24
Starboard Guest/Crew Head	24
Tackle Room	24
Tackle Room	24
Tackle Room	25
Tackle Room	25
Tackle Room	25
Cockpit	25
Cockpit	26
Cockpit	26
Cockpit	26
Cockpit	26

---

Cockpit	26
Cockpit	26
Cockpit	27
Cockpit	27
Cockpit	27
Flybridge	27
Flybridge	27
Flybridge	27
Flybridge	28
Flybridge	28
Flybridge	28
Flybridge	28
Flybridge	28
Engine Room	28
Engine Room	29
Engine Room	29
Engine Room	29
Engine Room	29
Engine Room	30
Engine Room	30
Engine Room	30
Engine Room	30
Engine Room	31
Engine Room	31
Engine Room	31
Engine Room	31
Persistence	32
Persistence	32
Persistence	32

---

---

Persistence	32
Persistence	33
Persistence	33
Persistence	33
КОНТАКТЫ	34
Контактная информация	34
Телефоны	34
Время работы	34
Адрес	34

# ХАРАКТЕРИСТИКИ

## Основная информация

**Тип судна:** Катер для спортивной рыбалки

**Подкатегория:** Convertible

**Модельный год:** 2009

**Год постройки:** 2009

**Страна:** United States

## Размеры

**Длина общая:** 78' 0" (23.77m)

**Ширина:** 21' 0" (6.40m)

**Мин. осадка:** 5' 0" (1.52m)

## Скорость, вместимость и масса

**Крейс. скорость:** 37 Kts. (43 MPH)

**Макс. скорость:** 45 Kts. (52 MPH)

**Вместимость воды:** 425 Gallons

**Объем топливного бака:** 2700 Gallons

## Размещение

**Всего кают:** 4

## Корпус и палуба

**Материал корпуса:** Other

## Информация о двигателе

---

**Двигатели:** 2

**Производитель:** MTU

**Модель:** 16V2000 M93

**Тип двигателя:** Inboard

**Тип топлива:** Diesel



---

# ПОДРОБНОЕ ОПИСАНИЕ

---

## Accommodations/Layout

---

**Persistence** features a very roomy and well thought out 4 stateroom, 5 head layout with a tackle room that is prepped to become crew quarters aft of the engine room. All staterooms feature ensuite heads and there is a day head forward of the salon as well.

## Salon

---

As you enter the salon from the mezzanine deck the entry door is to port to maximize the salon area. To starboard is an L-shaped leather sofa flanked by end tables with granite tops and drawer storage inside. The entire sofa has built in storage. There is a teak coffee table with a hi-lo mechanism to double as additional dining table if needed. To port is the main ship's electrical panel as well as wet bar area that contains a Kitchen Aid clear cube ice machine, liquor bottle and glass storage and stainless under mount sink with faucet. All countertops are inlaid with granite and have teak sea rails. Moving forward is the galley featuring an island for exceptional access from port or starboard. For dining in the galley area, there are 3 bar stools just aft of the galley island and a dinette to port that easily accommodates 4. The entire interior is book matched teak with Berber carpeted sole. Blinds are Hunter Douglass operated remotely.

## Galley

---

The galley island is bi level in design, raised for dining on aft edge and contains built in, stainless lined under counter refrigerators and freezers accessed by 4 doors. Forward of the galley island are all of the modern conveniences you would expect including 4 burner Gaggenau glass cooktop, Gaggenau oven, Fisher Paykel dishwasher, Broan trash compactor and Sharp Carousel Grill2Convection microwave oven. There is an abundant drawer and shelf storage throughout the entire galley area, enough to satisfy the most discriminating chef. Throughout the galley all countertops are granite with teak sea rails. Located forward and centerline in the galley is the Sharp 40" flat screen TV that is visible from anywhere in the salon or dining area. The galley sole is Teak and Holly throughout.

## Entertainment Center

---

The entertainment center is located just forward of the galley to starboard. There is a Denon stereo receiver, Sony Blu Ray disc player, Sharp flat screen TV, KVH Sat TV controller and iPod docking station.

## Day Head

---

The Day Head is located just forward of the dinette to port. It features granite countertop with under mount sink, Teak & Holly sole, Head Hunter toilet and Hunter Douglass electric window blind. Also accessed from the head is an abundant storage area that encompasses the entire area behind ship's brow. There is also access from starboard side as well.

---

## Companionway

---

The companionway is offset to starboard down teak steps, that contain large storage area, and give access to all accommodations as well as laundry center. There are two oversized hanging lockers that are cedar lined to starboard. Washer and dryer are Miele and are concealed behind teak louvered doors. Just forward of the laundry center is a linen closet with ample storage for supplies and additional linens.

---

## Master Stateroom

---

The Master Stateroom is located amidship to port and features a California King berth, flanked by twin teak night stands with granite counter inlays. Forward of the berth is a mirrored make up vanity area with an abundance of drawer and shelf storage and granite inlaid countertop. Above the vanity is the complete entertainment center that includes a Sharp flat screen TV, stereo with CD/iPod docking and DVD player. The hanging locker is cedar lined and there is a built in settee. Decorated in rich and warm earth tones throughout with matching shams and headboard. Below the berth is drawer storage, the berth also lifts to access a large storage area. The master head is located to port with private access.

---

## Master Stateroom Head

---

Featuring an extra large, stand up or sit down shower with interior lighting and eye level storage inside. Granite countertop on vanity, with an oversized mirror and custom lighting. The well placed single sink allows for plenty of counter space. The shower has a decorative bamboo etching on the door. There is a Head Hunter fresh water head to port, teak and holly floor.

---

## VIP Stateroom

---

The VIP Stateroom is located centerline forward in the vessel. The berth is a queen offset to port flanked by teak end tables with granite inlays. Storage above the end tables is cedar lined as well as the full size hanging locker. There is an abundance of drawer storage below the berth as well as a teak credenza with 4 drawers at the foot of the berth. The entertainment center is located above the credenza and features a Sharp flat screen TV, stereo system with DVD, CD and iPod docking station. Decorated in rich earth tones and accented by the headboard and shams. The VIP head is ensuite and has private access.

---

## VIP Stateroom Head

---

Located forward is the large shower with seats on either side. The Head Hunter fresh water head is located to port and the vanity with granite countertop to starboard. There is a cedar lined closet for towel & linen storage. Richly decorated with custom wall coverings, recessed lights, and teak and holly floor. The shower has a decorative bamboo etching on the door.

---

## Guest Stateroom, Port

---

The guest stateroom is located forward of the master to port. The berths are side by side twins split by a teak end table with granite inlay. There is drawer storage beneath each berth. To port is a cedar lined hanging locker. Forward is a teak credenza with drawer storage below and entertainment center above that features the stereo with iPod docking station and a Sharp flat screen TV. Very tastefully decorated throughout. The guest head is ensuite with private access.

---

## Guest Head, Port

---

Located just forward of the guest stateroom and features a mirrored vanity above with teak credenza below, fresh water Headhunter head and a teak and holly sole. The countertop has a granite inlay with undermount sink. Stall shower with decorative glass shower door with Bamboo inlay.

---

## Crew/Guest Cabin

---

The crew/guest cabin is located to starboard just forward of the laundry center. There are two stacked berths, over/under configuration. There is an abundance of storage behind sliding shoji panels outboard of the top bunk and drawer storage below lower berth as well as a cedar lined hanging locker. The entertainment center is unique as it features two separate Sharp flat panel TVs visible from each berth, stereo with CD/DVD and iPod docking station.

---

## Crew/Guest Head

---

The full sized shower has a seat inside and eye level storage. Head Hunter fresh water head, teak and holly floor, granite countertops on the vanity, large mirror and plenty of below counter storage.

---

## Tackle Room/Crew Quarters

---

Just aft of the engine room is a large tack/storage room that was initially intended to be the crews quarters. It is an easy conversion to a crew quarters as it is fully air conditioned and plumbed. In its current configuration, there is an abundance of storage for all of your tackle and folding work

bench; to port is a built in stainless tool box. Both port and starboard are part and storage lockers along with spare non-plumbed watermaker and plumbed Jun Air air compressor. The fuel manifold and oil change manifold are also located here.

## Flybridge

---

Teak helm and pod with single lever controls with bow thruster button in levers. Forward is the L-shaped lounge with cushions and storage below, custom teak table on Bluewater stanchion, two A/C exhaust vents, one to port, one to starboard, each with their own air handler. To port is a top loading stainless steel freezer and a separate top loading stainless steel refrigerated drink box. Aft is a full length bench seat with storage below. There are three Bluewater teak helm chairs. Other features include EZ2CY three sided enclosure, quartz indirect overhead lighting, overhead handrail, MIYA Epoch US-9R teaser reels in overhead box, which are remote controlled.

## Electronics

---

- 3 Furuno LCD 15" displays
- Furuno GPS/plotter Navnet system, 3D
- Furuno 96 mile radar, Black Box
- Furuno dual frequency Black Box sounder
- Furuno Navpilot autopilot
- KVH Satellite TV system
- KVH satellite telephone system
- Sirius satellite weather
- Camera input to monitor from engine room
- 2- Icom VHF radios
- ACR spotlight
- Autopilot interfaced with GPS/plotter

## Tuna Tower

---

- Jack Hopewell full tuna tower with polished welds
- Molded hard tops and standing platforms
- Molded in navigation lights
- Molded in fore and aft spreader lights
- Aft bridge rail has 5 rod holders and each tower leg has 2 clearing rod holders.
- Tower console contains full controls and steering, bow thruster control, MTU main engine displays and compass

## Tower Electronics

---

- Furuno Navnet 3D GPS/plotter/sounder/radar
- Furuno Navpilot autopilot remote
- Icom VHF radio
- Compass

---

## Fishing Equipment

---

- Full Jack Hopewell tuna tower
- Rupp 4 spreader 51' outriggers
- Rupp center rigger
- Bluewater fighting chair with rocket launcher
- 2 Live bait well
- Fishbox
- Miya Epoch teaser reels
- Eskimo ice machine
- Under gunnel electric reel outlets.

---

## Cockpit

---

The cockpit is a seamless blend of function, versatility and looks. Featuring varnished bulkhead, mezzanine seating, overhead A/C, teak deck and covering boards, 2 live bait wells, stainless lined refrigerators, stainless lined freezers, live bait wells, insulated fish box, port and starboard gaff lockers, walkthrough transom door and Bluewater teak fighting chair with rocket launcher and offset pedestal. There are under gunnel power plugs for deep dropping.

- Mezzanine seating area
- Varnished teak bulkhead
- Cockpit A/C system
- Teak deck and covering boards

---

## Machinery Space

---

As you enter the engine room via the water tight bulkhead door you will be impressed with how impeccably clean the machinery space is. This area is very well laid out, making service easy and doable.

Forward of the engine room is the pump room, which contains the generators, air conditioning system, sewage treatment system, watermaker, drinking water system and battery chargers. Essentially all other mechanical systems other than the main MTU engines. Once again the pump room is very well laid out making maintenance easy.

---

## Engine Room

---

- Twin MTU 16V2000 M93 Engines with 1950 hours
- Serviced only by MTU engine dealers
- MTU warranty in place until July 28, 2017 or 3800 hours, whichever comes first
- Twin Onan 27.5 KW gens
- Marine Air chilled water A/C-heat system
- Headhunter tidal wave head and waste system
- Escape hatch to galley sole
- Sea Recovery aqua matic watermaker
- Fuel site tubes
- 2 - 24V Dolphin battery chargers
- Access ports on all fuel tanks for simple tank inspections
- 2 pump room cameras fed to flybridge
- Charles systems PM3 shorepower
- Dual raw pumps for A/C system
- Electrical sub panel
- Dual Mac V water pumps plumbed with manifold
- Triple Racor 1000s per main engine
- Racor 500s with prime pumps for gens
- Seastar power steering with dual pumps
- Dripless shafts with seals, spares mounted on shafts
- MTU main engine displays
- Fireboy system
- Engine room cameras fed to bridge

---

## Deck/Hull

---

Mahogany cold molded hull glassed inside and out, teak transom, teak toe rail, teak coaming and cockpit, foredeck anchor windlass, flush mounted trim tabs, walkthrough transom door all trimmed out in either gleaming varnish or Matterhorn white top coat. Blue bottom paint with red, white and blue accent stripe at waterline.

---

## Performance Information

---

The following speeds were recorded with full fuel and water:

1250 RPM 20 knot and burning 70 GPH combined 1400 RPM 24 knot and burning 90 GPH combined 1550 RPM 28 knot and burning 100 GPH combined 1850 RPM 35 knot and burning 150 GPH combined 2150 RPM 39 knot 2400 RPM 43 knot

---

## Remarks

---

The Persistence was custom built from the keel up with one objective in mind, to be the best performing sportfisherman ever built! She has exceeded in doing so in everyway. The interior layout is by far the best I have personally seen with 4 cabins and 5 heads with an option of a 5th cabin just aft of the engine room. With only 1950 hours on her MTU engines and a top speed of 43 knots, her performance is exceptional. For peace of mind, her MTU engines are under warranty as well. Offered for sale at a fraction of replacement, please come inspect for yourself. I assure you, you will not be disappointed.

---

## **Исключения**

При продаже яхты исключаются личные вещи владельца.

---

## **Отказ от ответственности**

Компания предоставляет описание судна или яхты добросовестно, но не может гарантировать точность этой информации, а также не ручается за техническое состояние. Покупатель должен проинструктировать своих агентов или оценщиков исследовать представленную информацию более подробно, по собственному желанию. Продажа судна или яхты, изменение цены или снятие с продажи будет происходить без предварительного уведомления.

# ФОТОГРАФИИ

Salon



Salon



Salon



Salon





Salon



Salon



Day Head



Day Head



**Galley**



**Galley**



**Galley**



**Galley**



**Dinette**

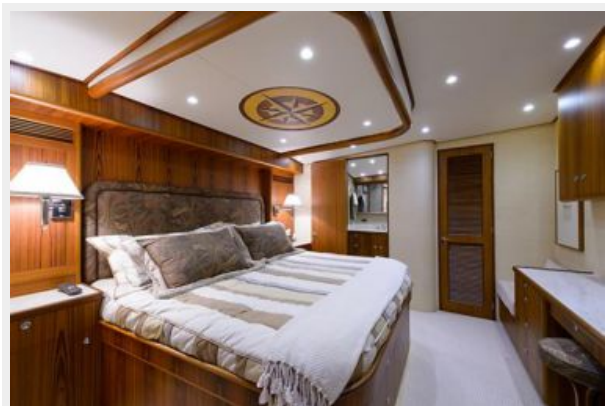


**Laundry**





**Master Stateroom**



**Master Stateroom**



**Master Stateroom**



**Master Stateroom**



**Master Stateroom**



**Master Stateroom Head**



**Master Stateroom Head**



**Master Stateroom Head**



**Forward Stateroom**



**Forward Stateroom**



**Forward Stateroom**



**Forward Stateroom**



**Forward Stateroom Head**



**Forward Stateroom Head**





**Forward Stateroom Head**



**Port Guest Stateroom**



**Port Guest Stateroom**



**Port Guest Stateroom**



**Port Guest Head**



**Starboard Guest/Crew Stateroom**



**Starboard Guest/Crew Stateroom**



**Starboard Guest/Crew Stateroom**



**Starboard Guest/Crew Head**



**Starboard Guest/Crew Head**



**Tackle Room**



**Tackle Room**





**Tackle Room**



**Tackle Room**



**Tackle Room**



**Cockpit**



**Cockpit**



**Cockpit**



**Cockpit**



**Cockpit**



**Cockpit**



**Cockpit**





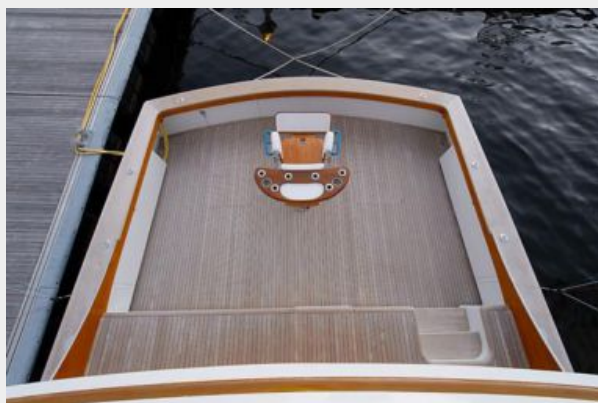
Cockpit



Cockpit



Cockpit



Flybridge



Flybridge



Flybridge



**Flybridge**



**Flybridge**



**Flybridge**



**Flybridge**



**Flybridge**



**Engine Room**





**Engine Room**



**Engine Room**



**Engine Room**



**Engine Room**



**Engine Room**



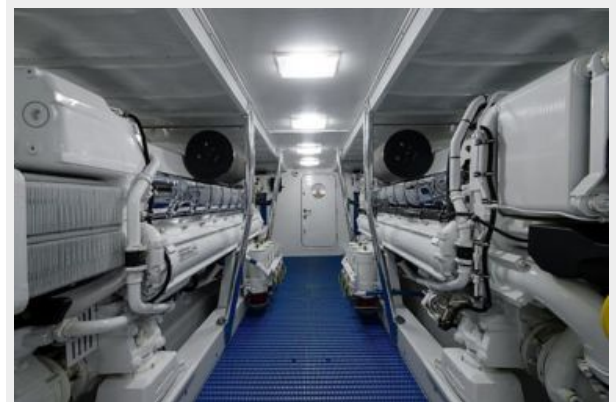
**Engine Room**



**Engine Room**



**Engine Room**



**Engine Room**



**Engine Room**



**Engine Room**



**Engine Room**



**Persistence**



**Persistence**



**Persistence**



**Persistence**





**Persistence**



**Persistence**



**Persistence**



# КОНТАКТЫ

Андрей Шестаков (Andrey Shestakov) – ведущий яхтенный брокер отдела продаж яхт и судов компании Shestakov Yacht Sales Inc. Официальный представитель Shestakov Yacht Sales Inc. для русскоговорящих клиентов в центральном офисе компании в Майами/Форт Лодердейл/Флорида/США.

## Контактная информация

Email: [andrey@shestakovyachtsales.com](mailto:andrey@shestakovyachtsales.com)

Web: [shestakovyachtsales.com](http://shestakovyachtsales.com)

## Телефоны

Краснодарский край: **+7(918)465-66-44**

США, Майами, Флорида: **+1(954)274-4435**

## Время работы

Понедельник – Суббота: **9:00 - 21:00**  
EDT

Воскресенье: **Закрето**

## Адрес



Harbour Towne Marina, 850 NE 3rd St,  
STE 213, Dania, FL 33004