

SEA HORSE — SABRE YACHTS



Судостроитель: SABRE YACHTS

Год постройки: 2008

Модель: Моторная яхта

Цена: **ЦЕНА ЯХТЫ ПО ЗАПРОСУ**

Местонахождение: United States

Длина общая: 52' 0" (15.85m)

Ширина: 16' 0" (4.88m)

Макс. осадка: 4' 3" (1.30m)

Крейс. скорость: 27 Kts. (31 MPH)

Купить **Sea Horse — SABRE YACHTS** а также выбрать подходящую вам яхту из нашего каталога яхт вам поможет опытный яхтенный брокер Андрей Шестаков. На сегодняшний день компания **Shestakov Yacht Sales Inc.** имеет большое количество яхт в собственном списке продаж, а также тесно сотрудничает со всеми крупными яхтенными производителями по всему миру.

Для того чтобы купить яхту **Sea Horse — SABRE YACHTS** а также проконсультироваться по любому вопросу связанному с покупкой, продажей, чартером яхт позвоните по телефону **+7(918)465-66-44**.

ОГЛАВЛЕНИЕ

ОГЛАВЛЕНИЕ	2
ХАРАКТЕРИСТИКИ	5
Обзор	5
Основная информация	5
Размеры	6
Скорость, вместимость и масса	6
Размещение	6
Корпус и палуба	6
Информация о двигателе	6
ПОДРОБНОЕ ОПИСАНИЕ	7
Unique Features And Upgrades	7
Optional Equipment	7
Fresh Water System	7
Waste Disposal	8
240/120 VAC Electrical	8
Fuel System	8
Deck Hardware	9
Deck & Hardtop	9
Hull	9
Propulsion	10
Safety	10
Decor	11
Guest / Day Head Forward	11
Guest Stateroom	11
Electronics	12
Main Salon / Helm Area	13
Galley	13
Master Stateroom	14

Исключения	15
Отказ от ответственности	15
ФОТОГРАФИИ	16
Profile	16
Salon	16
Salon	16
Helm	16
Helm	16
Helm to Aft	16
Helm to Aft	17
Helm	17
Salon	17
Dining	17
salon	17
Galley	17
Galley	18
Galley	18
Galley	18
Guest Stateroom	18
Guest Stateroom	18
Guest Stateroom	18
Guest Stateroom	19
Guest Stateroom	19
Head	19
Head	19
Head	19
Galley	19
Master Stateroom	20
Master Stateroom	20

Master Stateroom	20
Galley to Stateroom	20
Head	20
Head	20
Bow	21
Bow	21
Bow	21
Starboard	21
Engine Room	21
Engine Room	21
Engine Room	22
Engine Room	22
Manufacturer Provided Image	22
Salon	22
Salon	22
Salon	22
Aft Deck	23
Aft Deck	23
Aft	23
Aft Deck	23
Manufacturer Provided Image	23
Profile	23
КОНТАКТЫ	24
Контактная информация	24
Телефоны	24
Время работы	24
Адрес	24

ХАРАКТЕРИСТИКИ

Обзор

NEW CENTRAL

Original Owner

Sabre yachts builds another classic. With just over 600 hours, 'Sea Horse' is a Downeast boaters dream.

Available for showing 7 days a week.

All the aspects and details of this magnificent yacht are executed with boat building skills passed down by generations of Maine craftsmen and women. And by including in her design and systems the most modern equipment and technology, Sabre Yachts has created the ultimate cruising yacht.

With the suggestions and opinions of many experienced yachtsmen, the Sabre Design Team found solutions and created features which greatly enhance the experience of cruising this beautiful new yacht.

Her vee-hull with propeller pockets is sea-worthy and dry. Standard Caterpillar C15 fully electronic Acert engines, each capable of delivering 865 horsepower, are linked to Twin Disc Quick Shift transmissions for smooth and powerful operation. The 52 Salon Express will cruise comfortably in the mid-twenty knot range. AC Electrical services aboard are provided by twin 9Kw generators and her DC system is 24 volt. Molded steps from the aft cockpit provide easy access to her functional and well lit mechanical room.

Her interior accommodations are another world of comfort and elegance. A customized entertainment center , extended to aft starboard aft bulkhead with refrigeration and customized glass storage. Beautiful woodworking throughout the yacht, pleasing proportions and unusual fine points such as Shoji screens in the owners cabin doors make one feel inside a stylish home on the water.

Основная информация

Тип судна: Моторная яхта

Модельный год: 2008

Год постройки: 2008

Страна: United States

Размеры

Длина общая: 52' 0" (15.85m)

Длина по ватерлинии: 49' 3" (15.01m)

Ширина: 16' 0" (4.88m)

Макс. осадка: 4' 3" (1.30m)

Трапы: 11' 5" (3.48m)

Скорость, вместимость и масса

Крейс. скорость: 27 Kts. (31 MPH)

Водоизмещение: 46000 Pounds

Вместимость воды: 200 Gallons

Вместимость сточного бака: 80 Gallons

Объем топливного бака: 800 Gallons

Размещение

Всего кают: 2

Всего ком. состава: 2

Корпус и палуба

Материал корпуса: Fiberglass

Информация о двигателе

Двигатели: 2

Производитель: Caterpillar

Модель: C15 Acerts

Тип двигателя: Inboard

Тип топлива: Diesel

ПОДРОБНОЕ ОПИСАНИЕ

Unique Features And Upgrades

Piping on Stidd seats Install customer supplied toaster/oven in galley Sun Shade on overhead main salon sliding hatch Custom Entertainment Refrigerator door is flush with the rest of the cabinet and has a cherry door front over the existing refrigerator door

Supply S42X style cushions on the main salon settee and mate seat Custom helm seat with liquor locker drawer below One piece sunshade on outside three windshield windows covering wipers separate cover for small starboard window, forward of side door in lieu of interior shades. Material Sunbrella #81046-0000 Captain Navy.

Snap on curtain inside starboard side door. Material supplied by owner Custom fabric on main salon settee and mate seat cushions Custom Table in the main salon on hi-lo base

Standard accord shades for opening ports Name boards location: 7 degrees down angle from horizontal. This is with the name boards approximately 1' inboard from the hardtop's outer periphery.

Optional Equipment

- ACR Searchlight model RCL-100D Searchlight, 200,000 candela
- Beam Central Vac System with (2) Outlets and a 32' Expandable Hose
- Russound Multi-Cabin Audio System
- Sun Shade on Overhead Main Salon Sliding Hatch
- Dark hull colors
- Anti-skid color (fore & side decks, sun deck, aft cockpit, coach roof, coamings & hard top)
- Stern Thruster
- Anchor & Rode Package
- Boating Package
- Cherry Hull Ceilings in Forward Cabin
- Custom Décor

Fresh Water System

- Water capacity approx. 200 gals.
- 20 gal. 110V hot water heater with heat exchanger
- Dual 24VDC pumps on hot and cold water pressure system
- Fresh water coil hose in engine room

- Salt water wash down at anchor locker w/ coil hose

Waste Disposal

- (1) Polyethylene holding tank with 80 gallon capacity
- Freshwater MSD's with white ceramic bowls
- Macerator pump on holding tank to overboard sea valve
- Integrated gray water holding with macerator pump out and back-up overflow pump
- Waste & gray water tank level monitor at helm

240/120 VAC Electrical

- Dual 240/120 VAC 50 amp AC shore power systems
- One 50 ft. Glendinning Cord Reel aft
- One 240V bow inlet with 25 foot cord
- Dual 9.0kW Onan Generators with sound enclosures
- Dual 12KVA isolation transformers
- Automatic AC master switching system for shore & generator power
- Charger for ships batteries
- 4kW high output inverter with 120 Amp DC
- Main circuit breaker distribution panel in engine room
- 120V outlets in each cabin and one in engine room
- All galley and head receptacles are GFI protected
- 25 Amp, battery charger for engine start batteries
- Reverse Cycle Air Conditioning
- 10 Amp, battery charger for gen set batteries

Fuel System

- 800 gal diesel fuel. (2-400 gallon tanks)
- Exterior of tank coated with corrosion barrier
- Racor dual Max 1000 fuel filters
- Walker engineering AS801-24 Algaesep fuel polishing system to maximize fuel performance
- 2" "Diesel" stainless steel deck fill plate
- Fuel Level Indicator at helm

Deck Hardware

- 1 1/2" diameter type 316 stainless steel perimeter rail system
- (4) stainless steel spring cleats
- (2) stainless steel mooring cleats
- (2) stainless steel stern cleats
- Custom stainless steel dual anchor roller
- 24V Electric Windlass with controls at helm and foot switches on deck (Lewmar V4)
- Flagpole holder and flagstaff
- Lewmar Low Profile polished aluminum hatches w/screens
- Oversized Stainless steel opening ports
- Teak toe rails port and starboard with custom cast dual mid rail chocks and bow chocks
- Teak cabin side eye-brow
- Custom cast stainless steel "SABRE" medallion
- Cast stainless steel corner hawse pipes in cockpit through hull sides and transom

Deck & Hardtop

- Knitted Biaxial Structural E-Glass Reinforcements with NIDA Core coring
- Molded in anti-skid deck surfaces
- ISO NPG gelcoat
- Recessed salon windows with clear anodized frames
- Hardtop with integrated Webasto electric sliding sunroof and shade
- Custom Sabre composite radar mast
- (2) Double sided anchor locker w/Southco slam latch
- (3) Large double sided lazarette locker hatches with gas struts and Southco 3"dia. compression latches
- (1) Access hatch from aft cockpit to engine room with electric lift
- Aft facing bench in aft cockpit
- Forward facing transom seat

Hull

- 23 degree deadrise amidships and 15 degree deadrise at transom
- Reverse sloped transom
- ISO NPG Sport Yacht white gel coat w/vinylester back-up resin

- Knitted Biaxial Structural E-Glass Reinforcements
- Vacuum Bagged Airex PVC foam core in hull bottom (1.5") and Topsides (1/2")
- PVC Foam and Airex cored composite stringer system
- Swim platform with under-mounted telescoping ladder
- Hull side rubbing strakes
- PVC rub rail with stainless steel cap
- Painted (IMRON) Double Boot Strip
- Gold Cove Stripe

Propulsion

- Twin diesel CAT C15 865hp
- Fresh water-cooled
- Twin Disc QUICKSHIFT Transmission MGX 5114A
- Twin Disc EC300 Electronic controls w/ Express Mode (required to maximize Quickshift features)
- 2 1/2" stainless steel shaft (Aquamett 22 or equivalent)
- PSS drip-less shaft seals
- Manganese bronze struts with cutlass bearing
- NiBrAl four blade propellers to ISO Class S
- 24V alternators each engine
- Seawater cooled 10" underwater transom corner exhaust system
- Groco raw water intake strainers
- Oil change system for engines and gen sets
- Engine room ventilation system 24v
- Engine room intake ducts on cabin house side with stainless steel grill
- White gelcoated engine room
- White Mylar faced foam noise 2# barrier

Safety

- Fire extinguishers, (5) at 2 1/2 lbs.
- Marelon sea valves on all below waterline fittings.
- Bonding system to safeguard against galvanic corrosion
- Automatic fire extinguishing discharge system with override
- (3) Automatic electric bilge pumps
- (3) Bilge high water alarms

Decor

- Screens and shades on opening ports and hatches
- Dovetailed maple drawer boxes throughout

Guest / Day Head Forward

- Sink with faucet
- Separate shower stall with circular door
- Ceramic tile floor in WC compartment
- Hot and cold pressure water
- Storage lockers
- Solid surface counter with bull nose
- Teak shower grate
- Stainless steel towel bars
- Wood trimmed mirror over sink and mirror in top of passageway door (head side)
- Ventilation blower

Guest Stateroom

- Spacious low queen island berth layout with 5" mattress. ." laminated trim.
- Cherry hull ceilings
- 2 Drawers under bed. A/C return grills under drawers
- Aft end of berth top hinges open to access blanket storage
- Enclosed upper shelves to port and starboard of island berth with storage behind. Fwd most
- section (about 24") to be open shelf w/fiddle. Locker face to have two solid doors each side.
- Each door to access partitioned space with
- shelves in the aft two compartments. Locker doors to be hinged at top.
- Large cedar lined hanging locker to port with cedar shelf and closet pole. Open shelf above
- Bureau to starboard with enclosed locker above
- Built in LCD TV on forward facing bulkhead with DVD player
- Shade for hatch
- Private access to guest head/shower compartment
- Teak and holly sole with sealer
- Soft headliner panels
- Shoji style pocket door
- Air Conditioning (9000 BTU)

Electronics

- 2 E120 Raymarine
 - Simrad autopilot
 - Icom VHF
 - TC SATELLITE tracking
 - Analog Gauges
 - Digital Gauges
 - Raymarine tridata
 - Bow thruster
 - Stern Thruster
 - 120V AC Electrical System
 - Single 240V AC 50 amp AC shore power system.
 - 75ft. Glendinning cord reel.
 - (2) 9kw Onan Generators w/sound enclosure.
 - Isolation transformer.
 - Automatic fire extinguishing discharge system with override.
 - Automatic electric bilge pumps (3).
 - Illuminated main circuit breaker distribution panel.
 - 110V outlets in each cabin, one in engine room.
 - All galley and head receptacles are GFI protected.
 - Professional Mariner 50 amp, 3-bank battery charger.
 - Reverse cycle air conditioning (4 zone salon, galley, master and guest staterooms).
 - Heart 4000W inverter.
 - 24V DC Electrical Distribution System
 - Dedicated engine starting battery bank.
 - 24V 8D AGM deep cycle ship's service batteries.
 - Battery management panel w/emergency crossover feature at helm station.
 - Illuminated main circuit breaker distribution panel w/battery condition gauge.
-
- Horn.
 - Navigation lights.
 - Wiper/washer system.
 - Lighting: reading lights in both staterooms, Lights in the overhead, halogen bar lighting, engine
 - room lighting, cockpit courtesy lights w/remote switch at transom door.

Main Salon / Helm Area

- Twin Stidd helm seats on pedestals at helm position
- Door to side deck from helm
- Stainless steel sliding door to aft cockpit with curved windows on corners
- Helm dash area finished in cherry
- Navigation switch panel
- Flat chart area to port of engine control panel with storage below
- Custom wood trimmed stainless steel wheel
- Recessed sub AC/DC breaker panels facing aft helm bulkhead
- Raised "Mates Lounge" to port with Ice Maker below and chart storage
- Oversized U-shaped lounge with custom fabrics. Converts to sleeping berth, drawers below
- Fixed height pedestal table with starburst inlay and deep epoxy finish and add-on leaf
- Customized entertainment center , extended to aft starboard aft bulkhead with refrigeration and customized glass storage. L-shaped entertainment cabinet to starboard with LCD TV w/ Bose 3.2.1 stereo/DVD player with customized
- Blinds and curtains on all windows
- Teak and holly sole with sealer finish
- Sound deadening headliner panels
- Electrically operated sun roof over main salon

- Air Conditioning (2) x (16000BTU)

Galley

- Electric 3 Burner ceramic stove top

- Galley area with Viatera Quartz countertop. Bull nosed edge overhangs cabinet below

- Convection microwave oven with pull out dish locker below
- 120VAC galley exhaust fan
- Large storage drawer below oven
- Bulkhead cabinet above oven on wall facing aft
- (2) Zub-Zero Stainless Steel 110 v Two drawer units. One two drawer fridge unit aft and one two
- drawer freezer unit forward below washer drier cabinet.
- Fischer & Paykel DishDrawer dishwasher Built in coffee maker with integral water supply
- Bank of drawers aft of sink
- Has built-in Toaster Oven
- Stainless steel under-mounted double bowl sink mounted below counter
- Storage cabinet below sink with shelf and double doors
- Above counter storage outboard with beveled glass doors

- Pantry cabinet opposite galley runs floor to ceiling with deep adjustable shelves and waste
- Basket
- Pull out spice cabinet
- Vented washer dryer unit above fridge in hallway forward of pantry
- Additional storage beneath stairs
- Galley air conditioning (9000 BTU)
- Additional storage beneath stairs

Master Stateroom

- Double Shoji style pocket doors lead to the large master suite (approx. 48" total opening)
- Spacious low queen island berth layout with 6" mattress. . " laminated trim
- Elegant burlled maple inlaid head board
- Base of bed to incorporates drawers and storage
- Hydraulic lift to access bulk storage below berth
- Bureau/night stand with drawers to each side of bed, bookshelf above headboard
- Cedar lined hanging lockers with cedar shelf and closet pole. Open shelf above.
- High Boy dresser with high gloss inlaid top and four drawers
- Built in LCD TV with DVD player
- Shades for all ports and hatches
- Exclusive access to master head/oversized shower compartment through pocket doorway with
- Shoji style door
- Full length mirror behind pocket door from hallway
- Teak and holly sole with sealer
- Stateroom air Conditioning (9,000BTU)
- Soft headliner panels.
- Designer vessel sink with faucet.
- Separate shower stall with vent fan
- Electric shower sump pump
- Storage lockers with roll out stainless steel baskets
- Soap dispenser in counter
- High gloss cherry counter with bull nose
- Ceramic tile on head compartment and shower floor
- Stainless steel towel bars
- Wood trimmed mirror over sink
- Ventilation blower

Исключения

При продаже яхты исключаются личные вещи владельца.

Отказ от ответственности

Компания предоставляет описание судна или яхты добросовестно, но не может гарантировать точность этой информации, а также не ручается за техническое состояние. Покупатель должен проинструктировать своих агентов или оценщиков исследовать представленную информацию более подробно, по собственному желанию. Продажа судна или яхты, изменение цены или снятие с продажи будет происходить без предварительного уведомления.

ФОТОГРАФИИ

Profile



Salon



Salon



Helm



Helm



Helm to Aft



Helm to Aft



Helm



Salon



Dining



salon



Galley



Galley



Galley



Galley



Guest Stateroom



Guest Stateroom



Guest Stateroom



Guest Stateroom



Guest Stateroom



Head



Head



Head



Galley



Master Stateroom



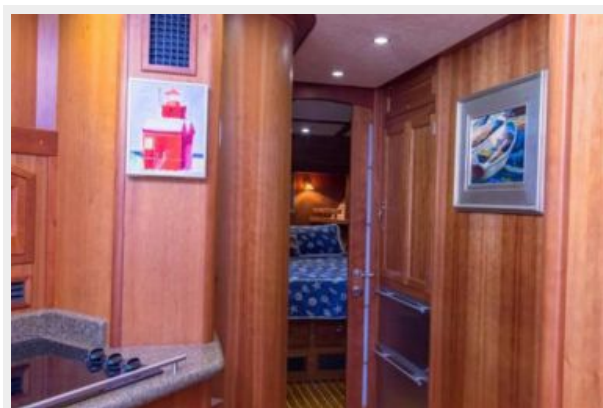
Master Stateroom



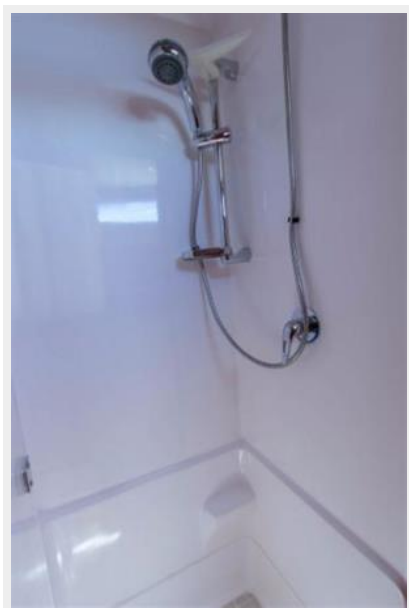
Master Stateroom



Galley to Stateroom



Head



Head



Bow



Bow



Bow



Starboard



Engine Room



Engine Room



Engine Room



Engine Room



Manufacturer Provided Image



Salon



Salon



Salon



Aft Deck



Aft Deck



Aft



Aft Deck



Profile



Manufacturer Provided Image



КОНТАКТЫ

Андрей Шестаков (Andrey Shestakov) – ведущий яхтенный брокер отдела продаж яхт и судов компании Shestakov Yacht Sales Inc. Официальный представитель Shestakov Yacht Sales Inc. для русскоговорящих клиентов в центральном офисе компании в Майами/Форт Лодердейл/Флорида/США.

Контактная информация

Email: andrey@shestakovyachtsales.com

Web: shestakovyachtsales.com

Телефоны

Краснодарский край: **+7(918)465-66-44**

США, Майами, Флорида: **+1(954)274-4435**

Время работы

Понедельник – Суббота: **9:00 - 21:00**
EDT

Воскресенье: **Закрето**

Адрес



Harbour Towne Marina, 850 NE 3rd St,
STE 213, Dania, FL 33004