

LAS MOROCHAS — FERRETTI



Судостроитель: FERRETTI

Год постройки: 2012

Модель: Моторная яхта

Цена: **ЦЕНА ЯХТЫ ПО ЗАПРОСУ**

Местонахождение: United States

Длина общая: 107' 0" (32.61m)

Ширина: 22' 11" (6.98m)

Макс. осадка: 8' 0" (2.44m)

Крейс. скорость: 15 Kts. (17 MPH)

Макс. скорость: 18 Kts. (21 MPH)

Купить **Las Morochas — FERRETTI** а также выбрать подходящую вам яхту из нашего каталога яхт вам поможет опытный яхтенный брокер Андрей Шестаков. На сегодняшний день компания **Shestakov Yacht Sales Inc.** имеет большое количество яхт в **собственном списке продаж**, а также тесно сотрудничает со всеми крупными яхтенными производителями по всему миру.

Для того чтобы купить яхту **Las Morochas — FERRETTI** а также проконсультироваться по любому вопросу связанному с покупкой, продажей, чартером яхт позвоните по телефону **+7(918)465-66-44**.

ОГЛАВЛЕНИЕ

ОГЛАВЛЕНИЕ	2
ХАРАКТЕРИСТИКИ	4
Обзор	4
Основная информация	4
Размеры	4
Скорость, вместимость и масса	4
Размещение	5
Корпус и палуба	5
Информация о двигателе	5
ПОДРОБНОЕ ОПИСАНИЕ	6
Accommodations	6
Salon	6
Formal Dining Area	7
Galley	7
Day Head	8
Master Stateroom - Main Deck	8
Master Ensuite Head	9
Pilothouse	9
VIP Staterooms (2) - towards Stern from Lobby	11
VIP En-Suite Heads - Stern	11
Lower Deck Lobby	12
VIP Stateroom - towards Bow from Lobby, starboard	12
Guest cabin with single berths - toward Bow from Lobby starboard	12
VIP En-Suite Heads - Bow	13
Crew Lounge Area	13
Captain's Cabin - forward	14
Captain's Head	14
Crew Cabins (2), port & starboard	14

Crew Heads Ceiling spotlights Curtain	15
Third Crew Cabin	15
Hull & Exterior	15
Exterior Upper Deck	17
Sundeck Area	18
Exterior Lounge and Dining Area	19
Engine Room	19
Control Room	20
Electronics & Navigation Equipment	20
Electrical System	22
Technical Rooms	22
Propulsion & Control Equipment	23
Systems & Air Conditioning	23
Safety & Fire Protection	24
Garage	25
Exclusions	25
Исключения	25
Отказ от ответственности	25
ФОТОГРАФИИ	27
КОНТАКТЫ	39
Контактная информация	39
Телефоны	39
Время работы	39
Адрес	39

ХАРАКТЕРИСТИКИ

Обзор

This stunning Italian Tri-Deck Motor Yacht is available immediately. She features 5 Owner/Guest Staterooms including an On-Deck Master plus accommodations for up to 7 crew. Her interior allows for plentiful natural light and her contemporary, light Oak furnishings are tasteful and inviting. Her Sundeck offers a perfect venue for entertaining and relaxation complete with spa. Las Morochas is built to US specs with a frequency converter to transition to European cruising. Call for an inspection today! ****NOT FOR SALE TO US RESIDENTS WHILE IN US WATERS****

Основная информация

Тип судна: Моторная яхта

Модельный год: 2012

Год постройки: 2012

Страна: United States

Размеры

Длина общая: 107' 0" (32.61m)

Ширина: 22' 11" (6.98m)

Макс. осадка: 8' 0" (2.44m)

Скорость, вместимость и масса

Крейс. скорость: 15 Kts. (17 MPH)

Макс. скорость: 18 Kts. (21 MPH)

Вместимость воды: 870 Gallons

Вместимость сточного бака: 211 Gallons

Объем топливного бака: 4500 Gallons

Размещение

Всего кают: 5

Всего ком. состава: 6

Койки экипажа: 7

Спальных мест экипажа: 7

Корпус и палуба

Материал корпуса: Fiberglass

Информация о двигателе

Двигатели: 2

Производитель: MAN

Модель: Common Rail

Тип двигателя: Inboard

Тип топлива: Diesel

ПОДРОБНОЕ ОПИСАНИЕ

Accommodations

The 33 Navetta Crescendo is a newer tri-deck model designed by Zuccon/Ferretti AYT that was started by Custom Line (Ancona, Italy) in the 2011 model year. One of the design emphasis points was to increase visual contact with the sea and this was achieved partially with an opening salon balcony, and larger windows in all areas. All five owner & guest staterooms are spacious and have exceptional window views with the owner's suite ondeck.

The décor is contemporary and elegant featuring extensive upgrades from the standard spec encompassing the rich Italian style this builder is known for. The interior finish is a tasteful pickled Oak wood in combination with bleached Oak, teak flooring and tailored leather. Teak exterior decks are on all levels and the upper sundeck is a part of the newer design featuring extensive sunpads as well as a circular spa. This vessel was custom ordered with focus towards entertaining and the dining areas all have beautiful settings, blending the interior with the open air. Crew space is for 7 persons and all located to fore. The transom features a hydraulic opening teak decked garage / water access deck (teak beach) with many other extras. This vessel was built for the Americas and has a 60-cycle electrical system, but is equipped with a substantial frequency conversion system to allow seamless transition to European cruising. This is a unique opportunity to acquire basically a brand new boat which has been recently outfitted and commissioned to high standards.

Salon

- Aft Electric opening glass sliding door with stainless steel frame, no-touch sensor
- Air conditioning
- Audio/Video mediaserver Seamphony master
- Denon Blu Ray DVD reader
- Bookshelves at stern port side
- Cabinets with shelves
- Ceiling spot lighting, dimmable
- Concealed overhead lighting system
- Cordless telephone
- Electric Leather venetian blinds (2)
- Electric Leather venetian blinds (Fix lateral panoramic window)
- Bleached Oak flooring
- Fixed lateral panoramic windows in tempered glass and stainless steel
- Denon HiFi
- surround "5+1" system
- Integrated remote control for Audio/Video, IPAD operation
- Samsung 3D LCD TV 55" with electric system fitted into the starboard side wall cabinet

- TV SAT receiver common interface
- Living area: Minotti upholstered sofas (3), corner cabinet and custom coffee table, leather finish with integrated wood
- serving tray and drawer storage, décor pillows
- Manual pleated curtain (aft window)
- Mini bar fridge with drawer
- Isotherm Icemaker
- Designer table lamps
- Starboard side has opening side doors with a electric controlled fold-down balcony

Formal Dining Area

- Access to lower deck (wooden stairs, courtesy lights)
- Access to upper lounge (wooden stairs, courtesy lights)
- Air conditioning
- Cabinets with shelves
- Ceiling spot lighting
- Complete tableware for 12, glasses, stainless steel cutlery
- Concealed overhead lighting system
- Electric Leather venetian blinds
- Bleached Oak flooring
- Leather chairs (6)
- Custom Leather fitted dining table with drawer that is matched with salon table
- Lower deck electrical panel in access to the lower deck, near stairs

Galley

- GE brushed stainless “Side by side” fridgefreezer
- with icemaker
- Access to crew area (laminated wood stairs)
- Access to lobby
- Air conditioning
- Cabinets with shelves and drawers
- Ceiling spotlights
- Ceramic electric five ring cooktop with pan holder, Bosch
- Complete tableware for 6 people (crew)
- Dining area: sofa with storage space, table with quartz resin top and stainless steel support and folding chairs (2)
- Dishwasher for 12, Miele
- Electric oven, Miele
- Extractor fan 110 V with external outlet, Miele
- Food waste disposer

- Fridge and Freezer, Miele
- Galley and main deck electric panel
- Garbage compactor, Broan
- Integrated monitoring system with 15" touchscreen display
- Samsung LCD TV 19"
- Manual side exit door from galley with electric lock
- Microwave, GE Profile stainless
- Fusion Mini Hi-Fi CD/DVD system with tuner and loudspeakers (2)
- Navigation instrument (Eco, Log and water temperature), Furuno RD 33
- Overhead cupboards with shelves
- Quartz resin counter top
- Stainless steel sinks with fresh water & separate drinking water tap
- Telephone
- VHF dual station, Sailor
- Bleached Oak laminate flooring
- Wooden Venetian blind
- Central vacuum system outlet (also in pilothouse, main deck dining area, master cabin, lower lobby, & crew area)
- Dumbwaiter lift to Pilothouse serving station

Day Head

- Air conditioning
- Cabinets with shelves
- Ceiling spot lighting, extra lights added
- Indirect accent lighting
- Electric ceramic
- WC Electric ventilation fan
- Mirror
- Emperador Marron marble
- Washbasin and marble counter top
- WC control panel with gauge (3/4 and full)
- Emperador Marron marble flooring
- Wooden Venetian blind

Master Stateroom - Main Deck

- Air conditioning with external air inlets with manual control
- Audio/Video mediaserver Seamphony unit
- Bedside cabinets
- (2) Bookshelves
- Cabinets with shelves

- Ceiling spotlights
- Concealed overhead indirect lighting system
- Cordless telephone & Cisco IP phone
- Desk with leather chair
- Digital safe
- Double bed with mattress, pillows, bedspread and sheets
- Drawers (2) and storage under the bed
- Hideaway Dressing table with mirror and leather ottoman
- Electric Leather venetian blinds & separate black-out blind
- Bleached Oak flooring
- Furniture with drawers in front of the wardrobe with mirror
- Headboard wall in leather with mirror, stainless steel inserts, open shelves and lockers
- Denon Hi-Fi surround "2+1" system with Blu-Ray
- Samsung LCD TV 55" Leather headboard
- Natural ventilation under the mattress
- Reading lights (2) TV SAT receiver common interface, RCI remote universal control
- Walk-in wardrobe accessible from study area (drawers and door) Walk-in wardrobe with Venetian blinds and wood/mirrored glass sliding door 2nd wardrobe closet on portside by TV

Master Ensuite Head

- Air conditioning
- Ceiling spotlights
- Ceramic bidet
- Electric ceramic WC
- Electric extractor fan for heads and shower
- Lockers with shelves
- Mirror with doors, medicine cabinets behind
- Openable glass window in shower with opaque privacy curtain
- Shower with glass door, marble tray
- Towels set
- Washbasins (2) with marble counter top WC control panel with gauge (3/4 and full) Marble flooring, Beige de France Anticato

Pilothouse

- Access to upper lounge (sliding door) Acoustic alarm
- Air conditioning
- Automatic pilot control unit, Simrad AP 50, with remote joystick control on helm seat armrest
- Bookshelves

- CCTV video sequencer with 15" display
- Ceiling spotlights
- Chart cabinet with shelves
- Accessory outlet 12V Clock, barometer, hygrometer
- Control panel for fin stabilizers, ABT-Trac & SIAM stabilization at rest
- Digital chain counters
- Dimmer for navigation instruments lighting
- Dual system integrated Navnet 3D (2 bboxes) with LCD 15" color displays (5), Furuno 64 mile radar, chartplotter and GPS, depth sounder
- Nav displays are: 2 x 19", 2 x 17", 1 x 15" FLIR night-vision camera remote control Electric control for searchlights (2) Electronic controls for engine clutch and throttle with easy-dock and auto-troll functions, ZF Marine
- External acoustic alarm for bilge water level in garage, engine room and accommodation
- Fire extinguishing system control panel
- Flaps control, trim tabs
- Helm position/upper lounge electric panel
- Integrated monitoring system with 15" touch-screen display
- Inter-com for maneuvering, Sailor 2 handheld units
- Leather covered steering wheel
- Leather helm-seats (2) with electric movement control on cabinet with drawer and door, Besenconi Light for chart reading Lights for navigation Magnetic compass, Plastimo
- Manual side exit doors with electric lock (2) (wheelhouse walkaround)
- Fusion Mini Hi-Fi CD system with tuner and loudspeakers (2) in helm station
- Canon Multifunction printer with fax
- Navigation instrument (Eco, Log and water temperature) (3), Furuno RD 33NAVTEX meteor receiver, Furuno NX-300 Sailor VHF remote unit, on helm seat armrest
- Power-assisted electro-hydraulic steering
- Protective external covers for front windscreen and side windows of helm position
- Rudder angle indicator SART Transponder
- Soft touch custom finished dashboard
- Speakers (2) with volume control located outside the wheelhouse SSB/DSC, GOST NavTracker Steering position with complete navigation instruments M.A.N. Digital engine displays, plus analog gauges ABT-Trac bow and stern thruster controls
- Synoptic panel unit with acoustic and visual alarms
- Teak wooden flooring with black stripes
- Telephone, Cisco IP phone
- Telephone interface GSM/Voice/Fax, mini VSAT VHF transceivers (2), Sailor by Trane & Trane Raymarine Loudhailer
- Wind gauge
- Windlass remote control for bow
- Windscreen wipers (2) with washing system and timer
- Wooden sliding pocket door between helm position and upper lounge
- Behind the helm seats the standard sofa has been replaced with a custom serving/prep area with countertop/sink, GE microwave, Mini refrigerator, cabinets, & dumbwaiter lift from

galley

VIP Staterooms (2) - towards Stern from Lobby

- Air conditioning
- Audio/Video media server
- Seamphony unit
- Bedside cabinets
- (2) Cabinet with shelves
- Ceiling spot lighting with dimmers
- Concealed overhead lighting system
- Digital safe
- Double bed designed to be changed also for double use (with mattress, pillows, bedspread and sheets) Drawers (2) under bed
- Dressing table with mirror and wooden and leather armchair
- Fire hose outlet with sea water in starboard cabin wardrobe
- Furniture with drawers
- Custom Bleached Oak laminate flooring
- Hull windows with 2 openable portholes in stainless steel
- Leather headboard
- Natural ventilation under the mattress
- Reading lights
- (2) Custom venetian blinds and manual black-out roll-up
- Ceiling spot lighting and dimmers
- Telephone
- Fusion Mini Hi-Fi system CD/DVD with tuner and loudspeakers
- (2) Samsung flat panel HDTV 40"TV SAT receiver
- Walk-in wardrobe (only in portside guest cabin)
- Wardrobe (only in starboardside guest cabin)

VIP En-Suite Heads - Stern

- Air conditioning
- Ceiling spot lighting
- Ceramic bidet Electric ceramic WC
- Electric extractor fan for heads and shower
- Lockers with shelves
- Mirror
- Openable porthole in stainless steel
- Shower with glass window and marble tray
- Towel sets
- Wood Venetian blinds and opaque roll up curtain

- Washbasins with marble counter top
- WC control panel with gauge (3/4 and full) Marble flooring, Limestone Persiano Anticato

Lower Deck Lobby

- Access to main deck (wooden stairs, courtesy lights)
- Ceiling lights
- Closet with mirror door
- Concealed overhead indirect lighting
- Custom inlayed marble flooring design, Bronze Armani Levigato

VIP Stateroom - towards Bow from Lobby, starboard

- Air conditioning Bedside cabinets
- (2) Ceiling spotlights
- Concealed overhead lighting system
- Digital safe
- Double bed with mattress, pillows, bedspread and sheets
- Drawers (2) and storage under the bed
- Dressing table with mirror and wooden and leather armchair
- Fitted carpet with soundproof lining
- Hull windows with 2 openable portholes in stainless steel
- Leather headboard
- Fusion Mini Hi-Fi system CD/DVD with tuner and loudspeakers
- (2) Natural ventilation under the mattress
- Reading lights
- (2) Venetian blinds and black-out roll-up
- Telephone
- Samsung flat panel HDTV 40"TV SAT receiver
- Wardrobe (clothes hanger, mirror)

Guest cabin with single berths - toward Bow from Lobby starboard

- Air conditioning Bedside cabinets
- (2) Ceiling spot lighting
- Concealed overhead lighting system
- Twin beds with mattresses, pillows, bedspreads and sheets
- Bleached Oak laminate flooring
- Hull windows with 2 openable portholes in stainless steel
- Leather headboards & bedside padded panels

- Fusion Mini Hi-Fi system CD/DVD with tuner and loudspeakers
- (2) Natural ventilation under the mattress
- Reading lights
- (2) Venetian blinds and black-out roll-up
- Telephone
- Samsung flat panel HDTV 27"TV SAT receiver
- Wardrobe (clothes hanger, mirror)

VIP En-Suite Heads - Bow

- Air conditioning
- Ceiling spotlights
- Ceramic bidet
- Electric ceramic WC
- Electric extractor fan for heads and shower
- Lockers with shelves
- Mirror
- Openable porthole in stainless steel
- Shower with glass window and marble tray
- Towel sets
- Washbasin with marble counter top
- WC control panel with gauge (3/4 and full) Marble flooring, Limestone Persiano Anticato
- Wooden Venetian blinds and opaque roll-up curtain

Crew Lounge Area

- Access from galley to crew area through staircase
- Air conditioning
- Cabinet with extendable top for ironing board
- Ceiling spot lighting
- Closet with door and shelves
- Miele Washing machine
- Miele Dryer
- Stainless steel mini-oven with electric extractor
- Furniture with doors and shelves
- Stainless steel opening porthole
- Storage room / pantry with access from under the stairs from the captain's cabin
- Storage under the stairs to the galley
- Beached Oak laminate flooring
- On crew companionway, Miele refrigerator & Miele drawer freezer

Captain's Cabin - forward

- Air conditioning
- Ceiling spot lighting
- Desk with drawer and ottoman Emergency exit to the bow deck Bleached Oak laminate flooring
- Upper & Lower (larger) twin berths (mattresses, pillows, bedspreads and sheets)
- Fusion Mini Hi-Fi Tuner and CD system with speakers
- (2) Samsung flat-panel 19" LED TV
- Multifunction navigation instrument (Eco, Log and water temperature)
- Nightstand
- Openable portholes in stainless steel
- (2) Reading light
- Venetian blinds
- Shelf
- Storage and shelves
- Telephone
- VHF transceiver
- Wardrobe with mirror and safe

Captain's Head

- Ceiling spotlights
- Curtain
- Electric ceramic WC
- Electric extractor fan for heads and shower
- Locker
- Mirror
- Openable porthole in stainless steel
- Shower with plexiglass door and wooden tray
- Towel sets
- Washbasin
- WC control panel with gauge (3/4 and full) Laminate wood flooring

Crew Cabins (2), port & starboard

- Air conditioning
- Bunk beds with mattresses, pillows, bedspreads and sheets
- Ceiling spot lighting
- Curtain
- Wood laminate flooring
- Fusion Mini Hi-Fi system CD with tuner and loudspeakers

- (2) Samsung flat-panel 19" LED TVs
- Mirror
- Openable porthole in stainless steel
- Reading lights
- (2) Storage and shelves
- Telephone
- Wardrobe

Crew Heads Ceiling spotlights Curtain

- Electric ceramic WC
- Electric fan
- Locker with shelf
- Mirror
- Openable porthole in stainless steel
- Secondary door for the hostess' use (starboardside heads)
- Shower with wooden flooring and waterproof curtain
- Towel sets
- Washbasin
- WC control panel with gauge (3/4 and full) Wood laminate flooring

Third Crew Cabin

- Air conditioning
- Bed (mattress, pillow, bedspread and sheets)
- Ceiling spot lighting
- Crew electric panel
- Curtain
- Fitted carpet with soundproof lining
- Fusion Mini Hi-Fi system CD with tuner and loudspeakers
- (2) Openable porthole in stainless steel
- Reading light
- Telephone
- Wardrobe with hanger and mirror

Hull & Exterior

- Access hatch to forepeak
- Access to chaise-longue at bow (GRP non-slip stairs)
- Access to gangway (GRP door with hinge)
- Access to garage (GRP and teak stairs with teak doors)

- Access to the bathing platform (GRP door with hinge, teak-laid ladder and courtesy lights)
- Access to the control room (hatch in GRP and teak) in cockpit
- Access to the engine room (hatch in GRP and teak) in cockpit
- Access to the upper deck (GRP and teak stairs, stainless steel handrail, courtesy lights)
- Aft (2), bow (4) roller fairleads
- Aft bench with sofa, tilting upholstered backrest, lockers and teak fittings
- Aft garage
- Aft Electric controlled glass sliding door to salon with stainless steel frame
- Attack fire hose outlet with sea water (2) (along side deck) Boat hooks (2) Bow storage
- Bow sundeck floor with non-slip finish
- Capstans (2) in cockpit docking cabinet (2200W each)
- CCTV color cameras (4) on cockpit, aft deck and side deck ceilings
- Chain wash down with sea water
- Cockpit chairs (6)
- Custom natural teak cabinet on aft deck, shoe storage + other
- Cockpit sink with hand-held shower and hot and cold water (mooring station)
- Covers for chaise-longue at bow, sunlounge pad at bow, cockpit sofa, table and chairs
- Cylindrical fenders
- Docking lines
- Dockside water connection
- Electric anchor windlasses (2) (4000W each) with controls at bow
- Electro-hydraulic aft deck area laid in teak convertible into sunbathing area
- Electro-hydraulic garage door teak-laid on the inside
- Emergency escape from engine room (hatch & removable stairs in stainless steel/teak)
- Exterior cushions are custom covered in "Alcantara Outdoor" fabric
- Fairleads with stainless steel cleats (2 each side) Fender covers
- Fire hose outlet with sea water (cockpit, bow)
- Fixed lateral panoramic window in tempered glass and stainless steel
- Fold-down panel on aft deck with 40" Samsung flat-panel HDTV
- Fresh water outlets (3) for washing (bow and side decks)
- Glendinning electric shore power connection 100A 400V 4 poles + ground (20 mt)
- Housed life rings (2) one with rope and luminous buoy, inside flybridge bulwarks
- Hydraulic bow thruster (50 Hp) & stern thruster
- Low level lighting on side decks
- Manual side exit door from galley with electric lock
- Mooring stations (2) with GRP covers, storage space for mooring lines
- Natural teak on bulwark
- Openable panoramic terrace on starboard side with electro-hydraulic opening system, teak-laid floor, stainless steel removable handrail and lines
- Snap fasteners for exterior canvas window covers
- Pool anchors (2) 125 kg with chains (2) 120 mt, diameter 14,5 mm, with markings in increments 25 mt
- Flush mounted flood lights on aft cockpit ceiling to illuminate the aft platform area and garage hatch

- Pull handles in starboard side locker for engine room (engine fuel and generator shut-down, air inlet and ventilation fan shut-off (2), activation of fire extinguishing system)
- Refueling and water intake on side decks
- Round fenders
- Side boarding gates
- (2)Leather and stainless steel fender hangers for the bulwark
- Spot lights on transom, side decks and at bow
- Stainless steel bow hawses
- (2)Stainless steel bow staff with chrome ships bell
- Stainless steel deck hardware
- Stainless steel poles to support cockpit ceiling
- (2)Stainless steel, teak-laid electro-hydraulic telescopic gangway with remote control and automatic stanchions, Besenzoni passarelle
- Stern (4) and bow (4) stainless steel cleats
- Storage space on port side walk-around
- Storage with shelves in the starboard support of the cockpit
- Sun lounge pad at bow with fenders storage space
- Table in teak with satin varnished natural finish (diameter 1500mm), with expandable leaf
- Teak bathing platform with foldaway electro-hydraulic diving bathing ladder and stainless steel cleats (2)
- Teak platform has removable stainless railings, tender mooring whips, and a white side pole umbrella
- Teak laid deck
- Upholstered chaise-longue at bow with side handrails
- Waterproof speakers (4) in the cockpit with amplifiers (2) and volume control (connection to the salon MD)
- Underwater lights

Exterior Upper Deck

- Access to sun deck (stainless steel and teak steps, stainless steel handrail, courtesy lights and opaque hatch)
- Access to sun lounge pad at bow (GRP door)
- Access to the cockpit (GRP and teak stairs, stainless steel handrail, courtesy lights)
- Aft and side circular glass window with sliding doors (4) openable at 225°
- Aft curtain rod for canopies
- Bow stainless steel handrail
- Starboard Cabinet with large storage bin for crushed ice machine and sink, with fold-down cover allowing use as serving banquet
- Helm position perimeter access (2), to helm station from side doors and to bow sunpad and chaise longue
- Life rafts for 20 people (2 x 10) with hydrostatic release (2), EV L-shaped sofa with ottoman/lounge

- Manual side exit doors from helm station with electric lock (2) (wheelhouse walk around)
- Outdoor upper deck lighting
- Flush mounted flood lights on aft upper deck cockpit ceiling to illuminate the davit area
- Protective covers (bow sun deck, chaise longue and L-shaped sofa)
- Stainless steel and varnished electro-hydraulic davit crane 600 Kg, Besenzoni
- Wood mounting chocks (removable) for WaveRunner storage
- Stainless steel & varnished teak flag staff
- Stainless steel side handrails, removable in davit area
- Steering positions (2) with instruments and alarms protected by plexiglass covers on the side decks
- Sun lounge pad at bow with stainless steel side handrails
- Teak deck
- Waterproof speakers (2) in the cockpit with UD amplifier and volume control (connected to the upper deck lounge Mini Hi- Fi)

Sundeck Area

- Access to upper deck (stainless steel and teak ladder, stainless steel handrail, courtesy lights and hatch)
- Acoustic alarm
- Bimini top with heavy stainless framing
- Covers (sun lounge pads & lounges)
- Upgraded KVH domes
- EPIRB Sailor by Thrane & Thrane fiberglass and stainless steel mast
- Stainless steel Fridge (in the fiberglass cabinet)
- GPS Antennas (2) + Emergency (1) GRP cabinet with sink, Gaggenau grills (2) and Isotherm icemaker
- GSM Antenna
- Loudhailer
- Jacuzzi spa with cushioned top and cover
- Manutti chaise loungers (3)
- Folding studio chairs (6)
- Navigation lights
- Open array radar antenna
- Plexiglass and stainless steel front and side windscreen
- Stainless steel handrail
- Stainless steel signal mast
- Sun deck lights
- Sun lounge pad
- Teak decking
- TV antenna
- TV SAT antenna
- VHF Antenna

- (2) Fusion Watertight mini Hi-Fi system with FM/AM tuner with loudspeakers (4)

Exterior Lounge and Dining Area

- Access to external upper deck (4 circular glass sliding lounge doors, 225° opening)
- Access to helm position (sliding door)
- Access to main deck (wooden stairs, courtesy lights, stainless steel handrail)
- Aft and side circular glass window with sliding doors (4) openable at 225°
- Air conditioning
- Audio/Video media servers
- Seamphony unit
- Cabinet with door and shelves
- Ceiling spotlights
- Cordless telephone & Cisco IP phone
- Extendable round dining table, teak with satin varnish with 8 chairs
- Samsung flat-panel LCD HDTV 40" in fold-down panel by exterior lounge area
- Living area: "L" leather sofas (2), custom hi-lo coffee table, side cabinets (2) with shelves & 2 table lamps
- Loudspeakers (2) in dining area with amplifier and volume control
- Denon Hi-Fi surround "2+1" system with Blu-Ray
- Teak wooden flooring
- Venetian leather blinds for the lateral windows
- Wall (with Venetian curtains) and sliding door division with the pilothouse
- Wooden serving shelves (2) on the circular window

Engine Room

- Access to cockpit (hatch, stainless steel and teak steps)
- Access to systems area (door with porthole)
- Air extractors (2) with remote controlled emergency shut down
- Air inlets with separators and remote controlled emergency shut-down
- Aluminum diamond plate non-slip flooring
- Day/night CCTV color cameras (2)
- Diverter valves (2) to allow engines to pump water from the bilge
- External finishing panels in multi-layer light alloy sheet
- Fire extinguishing system with FM200 Fuel level gauge, sight tubes
- Kohler Gen set, auxiliary 55 kW with soundproof casing Kohler Gen set, main 55 kW with soundproof casing
- Inspection lamp
- Neon lamps
- Racor double fuel prefilters (2) to main engines and double Hummel prefilter
- Racor fuel prefilters to generators (2)

- Smoke detector
- Exhaust separators for generators
- Stainless steel foldaway washbasin with fresh water
- Stainless steel handrail around main engines
- Water filters (2) for engine cooling system
- Water filters (2) for generator cooling system

Control Room

- Access to cockpit (hatch, stainless steel and teak steps)
- Access to engine room (door with porthole)
- Access to garage/ Technical Room corridor (watertight door)
- Air conditioning
- Aluminum diamond plate non-slip flooring
- Chillers for air conditioning with heating boiler Day/night CCTV color camera
- Electric ventilation fan
- Hydraulic emergency wheel
- Integrated monitoring system with touch-screen display, Furla
- NetMain electric panel 127/220 V / 24 V Neon lamps
- Rudder angle indicator
- Smoke detector
- Telephone
- Telephone interface GSM/Voice/Fax
- Water makers (2)
- Inlet fresh water is treated by UVA sterilizer & carbon filters
- Work bench with vice, drawers and tool set

Electronics & Navigation Equipment

Communications:

- Furuno radar antenna
- Open Array
- KVH Tracphone V7 mini VSAT
- Inter-com for maneuvering (6) (bow, cockpit, side decks (2), helm position, garage)
- Internal telephones (11), cordless (3) Multifunction printer with fax
- Portable GMDSS VHF (2) (helm position)
- Router coastal communicator PD-LAN-WIFI-Internet
- Shore socket (TV, telephone) Telephone interface GSM/Voice/Fax Telephone switchboard
- TV antenna
- TV SAT antenna, KVH HD9TV SAT modulator and multiswitch
- TV SAT receiver common interface (2) (saloon, master cabin)

- VHF transceiver (4) (helm position (2), galley and captain cabin)
- WIFI booster

Monitoring System:

- Air conditioning system fan coil monitoring and control
- Alarm, with database and current alarm, monitoring
- Automatic ventilation monitoring for engine room
- Bilge pump system monitoring
- Black/grey water tank level monitoring
- CCTV monitoring
- Electrical system (batteries, generators, shore power, electric panels) monitoring and control
- Flaps position monitoring
- Galvanic isolation monitoring
- Gyro stabilizer monitoring
- High and low fuel level and water tank level monitoring
- Lighting monitoring and control
- Monitoring system with 15" touch-screen display (3) (helm station, system room and crew area)
- Navigation lights monitoring
- Outside doors and portholes monitoring and control
- Smoke detection alarm monitoring
- Water tank level monitoring
- Weather data monitoring

CCTV System:

- CCTV image modulated in TV set
- CCTV video sequencer with display (helm position)
- Closed circuit surveillance system with colour cameras (6)
- Day/night internal cameras (3) (in engines room (2) and systems area)
- External TVCC cameras (4) in the cockpit and side decks

Navigation:

- Anti fog horn
- Automatic pilot control unit
- Dual system integrated Navnet 3D (2 bbox) with LCD 15" color (3), Furuno 64 miles radar, chartplotter and GPS, depthsounder (dashboard)
- GPS Antennas (2) + Emergency (1) Multifunction navigation instrument (4) (helm position (2), galley, captains' cabin)
- NAVTEX meteo receiver
- Steering positions with instruments and alarms on the side decks (2) Wind gauge (helm position)

Electrical System

- Automatic battery charger 12 V (generator battery bank), All chargers are MasterVoltAutomatic battery charger 24 V (domestic load battery bank)
- Automatic battery charger 24 V (engine battery bank)
- Automatic battery charger 24 V (emergency battery banks)
- Auxiliary generator starting battery 12 V (engine room)
- Battery bank for domestic load 24 V (garage)
- Battery bank for emergency 24 V
- Battery bank for radio
- Battery disconnecting switches for emergency radio battery
- Cathodic protection with zinc anodes
- Copper strip ground system
- Distribution 24 V DC for emergency and navigation lights
- Distribution system 120 V / 220 ac 60 Hz triphase powered by the generators and by the shore power
- Distribution system 24 V cc powered by the battery banks for electronic instruments
- Electric sockets throughout 120 V Emergency lighting system 24 V
- Engine and service battery disconnecting switches (manual for systems area and electric for cockpit)
- European socket circuit with plugs in galley, crew lounge, main deck salon, upper deck salon Generator battery banks parallel switch
- Kohler Genset, auxiliary 55 kW - 60 Hz with soundproof casing (896 hours as of 11-8-16)
- Kohler Genset, main 55 kW - 60 Hz with soundproof casing (1,000 hours as of 11-8-16)
- Glendinning 100 A 400 V 4 poles cable (20 mt)
- Ground connection for sea water intake and railings/pulpit
- Independent battery banks (2 x 2) for main engines 200Ah 24V (engine room) Isolation transformer triphase 100 A (2)
- Lighting system 220 V
- Main electric control panel and secondary panels (saloon, helm position, lower deck lobby, galley, crew dinette)
- Main engine battery banks parallel switch
- Main generator starting battery 12 V (engine room)Manual battery disconnecting switches for each generators
- Parallel system for genset/shore power
- Shore power cable 100 Amp
- ASEA frequency converters 36Kva x 2

Technical Rooms

Port:

- Air compressor with spray gun and spiral hose

- Electric ventilation fan
- Electro-hydraulic control unit for helm
- Fiberglass anti-slip flooring
- FM200 fire extinguisher system with manual activation
- Lamps
- Smoke detector
- Spare manual pump bilge/fire extinguisher

Starboard:

- Access to the starboard side technical room (gas-tight door)
- Electro-hydraulic control unit for garage door, bathing ladder, gangway and openable aft deck area fiberglass anti-slip flooring
- Flaps control unit
- Glendenning (20 mt) 100 A 3 poles + ground
- Lamps
- Smoke detector
- Terrace control unit
- Transformer for shore power supply 100 A (2) Air conditioned (2 units)
- ASEA units are mounted here

Propulsion & Control Equipment

- Propulsion and Control
- Electro-hydraulic powered steering
- Hydraulic bow thruster (50 Hp) and Stern thruster
- Shaft line transmission
- Stuffing box with dripless shaft seal, low maintenance
- Underwater exhausts
- ZF Smart Command engine control system, main helm, wing docking stations to either side, & aft deck station (hideaway under teak table)
- Anti-Rolling System
- Anti rolling gyro, 3 x Mitsubishi ARG msm 4000
- Fin stabilizers with electronic control (ABT), SIAM stabilization at rest
- Trim tabs (flaps)

Systems & Air Conditioning

Fresh Water System:

- Dockside water connection
- Fresh water pump with autoclave American version, 2 pumps
- Fresh water outlets for washing (4) (bow, side decks (2) and upper deck)

- Heating boilers (2) 100 lt + 100 lt 230 V
- Hot water circulating pump Structural fresh water tank
- Water makers
- AquaPure drinking water system, AP200

Black & Grey Water System:

- Automatic grey water discharge system (interchangeable with black water)
- Black water tank (840 lt) with gauge (3/4 and full)
- Electric automatic pump for black water tank discharge (interchangeable with grey water)
- Electric WCs with fresh water flush, Techma
- Grey water 3 way valve in galley
- Grey and black water tanks washing system with sea water
- Grey water tank with gauge (3/4 and full)
- Marpol discharge outlet for black water, Hamann supermini plus

Fuel System:

- Fuel tanks (in stainless steel) with decantor, discharge and inter-connection system (engine room)
- Fuel transfer pump 24 V
- Fuel transfer pump 400 V
- Pipes in compliance of the class requirement
- Racor double fuel prefilters (2) to main engines and double Hummel prefilter
- Racor prefilters to generators (2)
- Structural fuel tank
- Alfa Laval fuel purification
- Lube oil transfer system

Bilge Pump System:

- Auxiliary electric pumps (6) (accommodation space (4), garage, engine room)
- Bilge alarm in each compartment
- Centralized 400 V bilge pump system with electric pumps (2) and manual emergency pump with cock handles (7) (accommodation space (4), engine room, garage, systems area)
- Emergency bilge suction pipe (engine room) through engine cooling pumps
- Marpol connection for bilge oily water drainage

Air Conditioning:

- American version air conditioning and boiler for winter heating (outlet in the bathroom included), Dometic / Condaria
- Chilled water system

Safety & Fire Protection

- AxeChild life jackets (2)
- EPIRB First aid kit
- Housed life-rings (2), one with rope and luminous buoy
- Life jackets (20) Life rafts for 20 people (2 x 10) SART Transponder
- Fire extinguishing system with sea water (garage)
- Fire hose outlet with sea water (bow, starboard side deck, cabins lobby)
- Fixed fire extinguishing system for engine room with manual activation from the cockpit
- Gasoline vapor detection system in garage
- Portable fire extinguishers located in the rooms/cabins
- Pull handles in the engine room (engine fuel and generator shut-down, air inlet and ventilation fan shut-off (2), activation of fire extinguishing system)
- Smoke detector system (in all cabins, galley, dining area, saloon, upper lounge, helm position, garage, engine room, systems area) with main alarm in helm position

Garage

- Access to cockpit (GRP and teak stairs)
- Access to systems area (watertight door)
- Access to technical room (gas-tight door)
- Diesel fueling station for tender
- Electric ventilation fans (2) with remote controlled emergency shut
- Electro-hydraulic garage door teak-laid on the inside
- Emergency steering position
- Fire extinguishing system with sea water
- Fresh water outlet for washing
- Gas detector (2) GRP and non-slip flooring
- Hot/cold shower (2) Neon lamps
- Openable staircases with storage space and top in teak
- Smoke detector

Exclusions

Tender is excluded from sale as well as Owner's personal belongings. Full list of exclusions available upon request.

Исключения

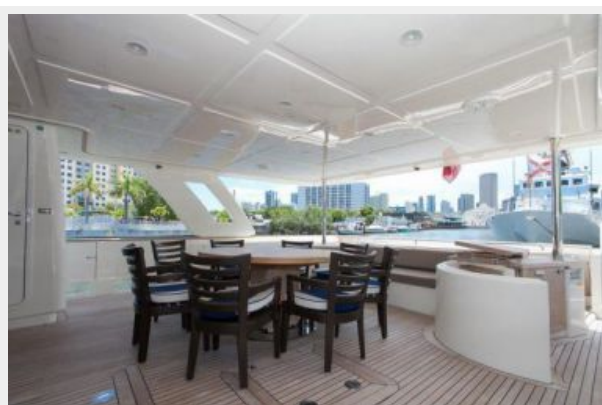
При продаже яхты исключаются личные вещи владельца.

Отказ от ответственности

Компания предоставляет описание судна или яхты добросовестно, но не может гарантировать точность этой информации, а также не ручается за техническое состояние. Покупатель должен проинструктировать своих агентов или оценщиков исследовать представленную информацию более подробно, по собственному желанию. Продажа судна или яхты, изменение цены или снятие с продажи будет происходить без предварительного уведомления.

ФОТОГРАФИИ

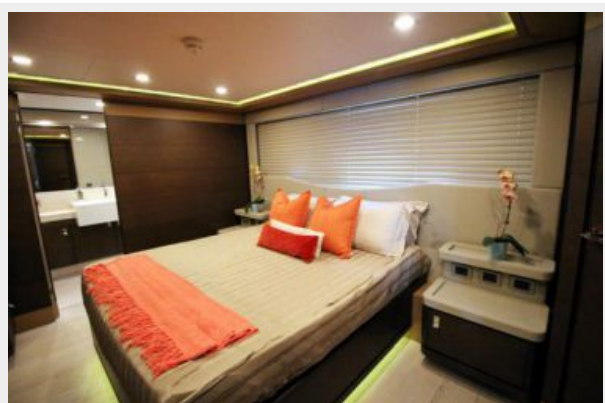


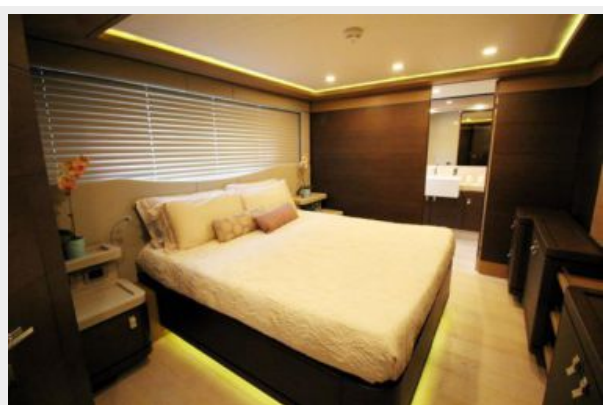


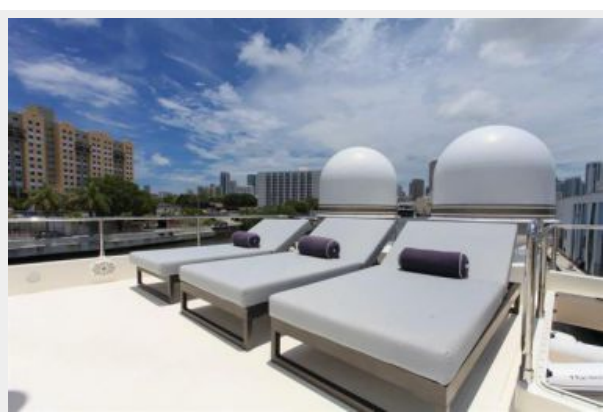
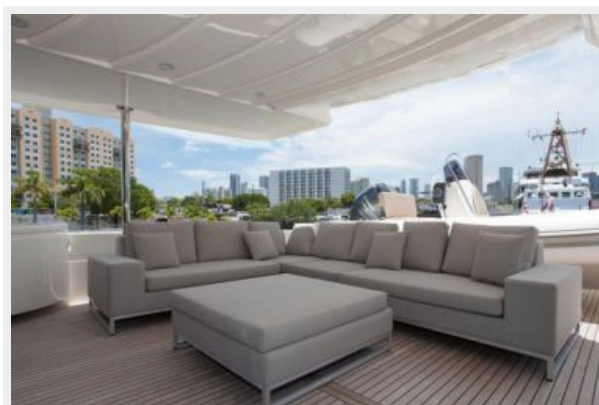




















КОНТАКТЫ

Андрей Шестаков (Andrey Shestakov) – ведущий яхтенный брокер отдела продаж яхт и судов компании Shestakov Yacht Sales Inc. Официальный представитель Shestakov Yacht Sales Inc. для русскоговорящих клиентов в центральном офисе компании в Майами/Форт Лодердейл/Флорида/США.

Контактная информация

Email: **andrey@shestakovyachtsales.com**

Web: **shestakovyachtsales.com**

Телефоны

Краснодарский край: **+7(918)465-66-44**

США, Майами, Флорида: **+1(954)274-4435**

Время работы

Понедельник – Суббота: **9:00 - 21:00**
EDT

Воскресенье: **Закрито**

Адрес



Harbour Towne Marina, 850 NE 3rd St,
STE 213, Dania, FL 33004