

LADY NAN CE — WESTPORT



Builder: WESTPORT

Year Built: 2007

Model: Motor Yacht

Price: PRICE ON APPLICATION

Location: United States

LOA: 112' 0" (34.14m)

Beam: 23' 5" (7.14m)

Max Draft: 5' 6" (1.68m)

Cruise Speed: 21 Kts. (24 MPH)

Max Speed: 25 Kts. (29 MPH)

Our experienced yacht broker, Andrey Shestakov, will help you choose and buy a yacht that best suits your needs **LADY NAN CE — WESTPORT** from our catalogue. Presently, at Shestakov Yacht Sales Inc., we have a wide variety of yachts available on our sale's list. We also work in close contact with all the big yacht manufacturers from all over the world.

If you would like to buy a yacht **LADY NAN CE — WESTPORT** or would like help answering any questions concerning purchasing, selling or chartering a yacht, please call **+1(954)274-4435**

TABLE OF CONTENTS

TABLE OF CONTENTS	2
SPECIFICATIONS	7
Overview	7
Basic Information	7
Dimensions	7
Speed, Capacities and Weight	7
Accommodations	7
Hull and Deck Information	8
Engine Information	8
DETAILED INFORMATION	9
Overview	9
Upgrades & Features	10
Aft Deck	10
Salon	10
Dining	10
Galley / Dinette	11
Pantry / Laundry	11
Pilothouse	11
Master Stateroom	11
Master Head	12
VIP Stateroom	12
VIP Head	12
Guest Stateroom / Port	12
Guest Head / Port	12
Guest Stateroom / Starboard	13
Guest Head / Starboard	13
Guest Foyer	13
Captain's Cabin	13

Captain's Head	13
Crew Quarters & Head	14
Flybridge	14
Electronics	14
Electrical Systems	15
Fore Deck	15
Engine Room and Mechanical Equipment	15
Exclusions	16
Exclusions	16
Disclaimer	17
PHOTOS	18
Aft Deck	18
Aft Deck	18
Aft Deck	18
Aft Deck	18
Aft Deck	18
Salon	18
Salon	19
Salon	19
Salon / TV	19
Salon	19
Salon	19
Dining	19
Day Head	20
Dining	20
Galley	20
Galley	20
Galley	20
Dinette	20

Pilothouse	21
Pilothouse	21
Pilothouse / Settee	21
Pilothouse	21
Master Stateroom	21
Master Stateroom	21
Master Stateroom	21
Master Stateroom	21
Master Stateroom	22
Master Stateroom	22
Master Head	22
Master Head	22
Master Head	22
Master Head	22
Lower Foyer	23
VIP Stateroom	23
VIP Stateroom	23
VIP Stateroom	23
VIP Head	23
Guest Stateroom / Port	23
Guest Head / Port	24
Guest Stateroom / Port	24
Guest Stateroom / Starboard	24
Guest Stateroom / Starboard	24
Guest Head / Starboard	24
Guest Head / Starboard	24
Flybridge / Helm	25
FLybridge / Helm	25
Flybridge	25

Flybridge	25
Flybridge / Bar	25
Flybridge / Seating	25
Fore Deck	26
Fore Deck	26
Walk-Around Deck	26
Sun Deck	26
Sun Deck	26
Bow	26
Crew Quarters	27
Bow	27
Crew Quarters	27
Crew Stateroom	27
Crew Head	27
Crew Stateroom	27
Utility Room	28
Utility Room	28
Engine Room	28
Engine Room	28
Engine Room	28
Engine Room	28
Engine Room	28
Engine Room	29
Engine Room	29
Engine Room	29
Engine Room	29
Transom	29
Transom	29
General Arrangement	30
Aft View	30

CONTACTS	31
Contact details	31
Telephones	31
Office hours	31
Address	31

SPECIFICATIONS

Overview

"Lady Nan Ce" offers accommodations for eight owner/guest in four staterooms with en-suite heads, plus five crew.

Basic Information

Category: Motor Yacht

Sub Category: Raised Pilothouse

Model Year: 2007

Year Built: 2007

Country: United States

Fly Bridge: Yes

Dimensions

LOA: 112' 0" (34.14m)

Beam: 23' 5" (7.14m)

Max Draft: 5' 6" (1.68m)

Speed, Capacities and Weight

Cruise Speed: 21 Kts. (24 MPH)

Max Speed: 25 Kts. (29 MPH)

Water Capacity: 1000 Gallons

Holding Tank: 600 Gallons

Fuel Capacity: 5480 Gallons

Accommodations

Total Cabins: 4

Sleeps: 5

Total Heads: 6

Captain Cabin: True

Crew Cabin: 3

Crew Berths: 5

Hull and Deck Information

Hull Material: Fiberglass

Hull Configuration: Semi-Displacement

Hull Designer: Jack Sarin

Exterior Designer: Westport/Taylor Olson

Interior Designer: Westport

Engine Information

Engines: 2

Manufacturer: MTU

Model: 16V2000

Engine Type: Inboard

Fuel Type: Diesel

DETAILED INFORMATION

Overview

PRELIMINARY SPECIFICATIONS “*Lady Nan Ce*” offers four owner and guest staterooms with the Master amidship and the VIP all the way forward. The crew which is aft offers 3 additional staterooms with berths for 4-5 crew accessed through their private staircase from the Aft Deck.

Entering the Main Salon from the starboard entry Foyer, one can appreciate the warm and inviting feeling of a spacious full beam Salon with glass doors on the Aft Salon going to the large Aft Deck.

The Dining Room seats eight guests comfortably. Raised buffet cabinets port and starboard have Lucite fitted storage for china, crystal, stemware and silverware. An overhead “oval shaped” domed ceiling features pendant and indirect lighting. The perimeter soffits of the whole salon/dining area consist of matching cherry wood crown moldings with indirect rope lighting on rheostats.

Moving forward to starboard is the entrance foyer and day head, followed by the full-beam “country style” Galley with great exterior views. Unique to “Lady Nan Ce” is a custom designed dinette to port forward with three chairs and a walk-around island at center. This modified galley layout is user friendly and some of the features include custom perimeter soffits, multiple overhead halogen lights and speakers, a 42” flat screen TV flush mounted at center forward; full-size top of the line stainless steel appliances and granite countertops throughout. An additional pantry is located forward and down four steps just aft of the entrance to the forward VIP guest stateroom.

The en-suite forward VIP stateroom offers an island centerline queen berth and walk-in wardrobe. There is a built-in settee and bookshelves as well as an oversized backlit overhead hatch. A complete audio/video system includes a 20” TV and flush-mounted overhead speakers.

From the Main Salon / Dining area to port is the portside entrance Foyer. A midship laundry center/ pantry is inboard with a stacked washer/dryer, additional refrigerator, storage cabinet and two ice makers. A ¾ door within this area allows access under the raised pilothouse where several communications, A/C and electrical components are located.

Down from the portside entrance foyer via circular stairwell is the lower midship foyer separating the Master and two additional guest staterooms aft.

The Master Suite has double entrance doors, a centerline king size berth with an upholstered headboard and two end table cabinets. A custom built-in sofa is to port and a large dresser is opposite. Four port lights with Shoji screens allow daylight to filter in. A 37” LCD TV is located on the aft bulkhead. The cedar-lined walk-in wardrobe has a built-in safe. The complete audio/video equipment is complimented by a surround sound system with sub-woofer. Indirect lighting on dimmers is behind the crown molding and under the berth. Wall-mounted reading lights and numerous overhead halogen lighting groups are on rheostats.

His and hers Master Head forward is spectacular/ the Jacuzzi tub and “Swedish style” shower with multiple sprayers are at center; dividing the two heads. Aft of the lower foyer are two additional guest staterooms, similar in size and offer spacious en-suite heads.

The port side VIP Stateroom features a queen size berth and the starboard side cabin can accommodate two guests in the over-sized twin berths. Both Guest Staterooms were designed with custom fabrics and complimented with Shoji screens as well as a full A/V entertainment system with 20” color TV’s, DVD & CD players and AM/FM radio receivers; and cedar-lined hanging lockers and abundant storage drawers.

Upgrades & Features

- Hull 26 of the series
- 2100 Hours (May 2016)
- 15' Novurania 2012 (Light use)
- (2) Waverunners 2012 (Light use 15 hours each)
- Blackwater Treatment Plant by Headhunter
- Eskimo Ice Machine Dumping in custom built-in bins on port side of aft deck by Factory
- Aft salon doors (New Style - Pacific Coast Marine)
- Anchors are stainless steel
- Murray Brothers aft deck table and chairs high-gloss Teak
- Audio/video has been upgraded throughout to Mini Ipads running through Crestron
- Dishwasher and icemaker (Upgraded in 2015)
- Dive Compressor (Serviced Mar. 2016)
- Watermakers (2) with Auto-flush added
- (2) New AC Chillers (New in 2015)

Aft Deck

- Refrigerator bar
- Sink with hot and cold water bar
- Solid surface bar top
- (3) Teak bar stools
- Eskimo 600 ice machine custom built into port aft deck cabinets
- High-gloss teak dining table with sliding base
- (4) Teak dining chairs around teak aft deck table
- Molded in settee with cushions
- Spiral staircase down to crew quarters
- Stairs up to Flybridge
- 37" Plasma TV & satellite receiver
- Uno control pad from whole boat system

Salon

- IPad remote for audio/video, through Crestron system with IPad for Salon, Aft Deck and Flybridge
- Large entry foyer on starboard side
- Marble tile in port and starboard companionways and aft salon entry
- 50" Samsung LED TV
- Surround receiver, Satellite receiver, surround sound speaker system with a
- powered Sub-woofer, Pronto programmable remote
- Kaleidescape system
- Bar with clear ice maker and storage
- Denon stereo system with DVD, Apple TV and iPod docking station for Crestron

Dining

- Formal dining table with eight chairs
- Raised buffets port and starboard

- (2) Mirrored Lucite storage cases for formal dining service
- Lower side buffets

Galley / Dinette

- 48' Kitchen Aid refrigerator
- Dacor 5burner touch top cooktop
- Dacor 30" convection oven
- GE Profile Microwave/vent hood
- Extra deep stainless Kohler sink with Kohler cutting board
- Kitchen Aid stainless steel icemaker
- Franke hot water dispenser
- Granite countertops
- Cherry cabinets
- Granite dinette table with settee and built-in storage
- Broan trash compactor
- Fisher & Paykel dishwasher
- Amtico flooring
- Insinkerator disposal
- 42" Plasma flat screen TV Plasmavision

Pantry / Laundry

- Walk-in pantry located off of port companionway
- Pantry storage
- Miele Novotronic washer & dryer
- Under-counter Line wine cooler

Pilothouse

- 24" Destroyer type helm steering wheel
- Electronic Detroit Diesel engine controls
- Detroit Diesel DDEC panel
- Stidd low back helm chair
- LCD 15" Monitor
- Uno control pad for whole boat audio/video system
- Chart drawers
- Desk with stool
- Built-in bookcase

Master Stateroom

- California king bed with upholstered headboard
- Bronze mirrors on bulkhead above headboard
- Walk-in closet lined with aromatic cedar
- Digital safe in walk-in closet
- 15-Drawer dresser

- Double door entry
- Opening portholes with screens and privacy covers
- 37" Plasma TV
- DVD/CD player, surround sound system with Sub-woofer and satellite receiver

Master Head

- Marble shower with Grohe fixtures
- Full-width vanities port and starboard
- Marble counters
- Marble tile
- (2) Headhunter Royal Flush Hydro Vac toilets
- Linen lockers
- Clothes hampers
- Euro style frameless tempered glass doors and chrome latches

VIP Stateroom

- Queen bed lifts up on gas shocks to storage below
- Upholstered headboard
- (2) Built-in bookcases at headboard
- Walk-in closet lined with aromatic cedar
- Vanity/desk
- 24" round hatch over berth
- TV with surround sound DVD/CD player and satellite receiver

VIP Head

- Vanity
- Marble counters
- Linen cabinet
- Bates & Bates Teri sink
- Headhunter Royal Flush Hydro Vac toilet
- Custom molded fiberglass shower with Euro-style frameless tempered glass door and Grohe fixtures

Guest Stateroom / Port

- Queen bed, bunk lifts up on gas shocks to storage below
- Upholstered headboard
- Bronze mirrors on aft bulkhead above headboard
- Opening portholes with screens and privacy covers
- Entertainment center with cherry doors and 5-drawer dresser below
- Closet lined with aromatic cedar
- TV/DVD/CD player and satellite receiver

Guest Head / Port

- Vanity
- Marble counters with backsplash
- Kohler vintage sink
- Headhunter Royal Flush Hydro Vac toilet
- Custom molded fiberglass shower with Euro style frameless tempered glass doors with chrome latch and Grohe fixtures

Guest Stateroom / Starboard

- Twin beds, upholstered headboard, the beds lift up on gas shocks for storage below, inboard bed is adjustable to make queen
- Entertainment center with cherry doors and 5-drawer dresser below
- Aromatic cedarlined closet
- (1) 3-Drawer movable nightstand
- Opening portholes with screens and privacy covers
- TV/DVD/CD player and satellite receiver

Guest Head / Starboard

- Vanity
- Wall mirror above vanity
- Marble counters with backsplash
- Kohler vintage sink
- Headhunter Royal Flush Hydro Vac toilet
- Custom molded fiberglass shower with Euro style frameless tempered glass doors with chrome latch and Grohe fixtures

Guest Foyer

- Cherry cabinet with marble top
- Bronze overhead mirror with cherry trim
- Marble tile floor
- Guest stairs have lift-up section to allow for storage
- Overhead lighting

Captain's Cabin

- Expanded width 18" walk-around queen berth on gas shocks with storage below
- Desk with solid surface top, includes stool
- Aromatic cedar-lined closet
- Built-in nightstand
- Cabinet above berth
- Safe in closet

Captain's Head

- Custom molded fiberglass showers with tempered glass doors and Grohe fixtures
- Galley Maid toilets, freshwater plumbed and discharged into holding tank
- Kohler Bolero sinks with Grohe fixtures
- Vanity and medicine cabinet
- Amtico flooring

Crew Quarters & Head

- Crew has (2) twin beds with drawers under and (1) single stateroom aft
- G.E. Washer and dryer
- Uno control pad for access to whole boat system for audio/video
- (2) G.E. Upright, under-counter freezers

Head:

- Custom molded fiberglass showers with tempered glass doors and Grohe fixtures
- Vanity and medicine cabinet
- Kohler Bolero sinks with Grohe fixtures
- Amtico flooring

Flybridge

- Molded-in spa with sun pad top and storage below
- Sun pad with cushions and covers
- Wet bar has solid surface white sink and top, TV/phone jacks, Propane grill, refrigerator icemaker and (4) stainless steel bar stool with foot rests.
- 15' Novurania w/ 90 HP Yamaha (2012)
- (2) Yamaha Wave Runners (2012)
- (2) Helm seats with footrests
- (3) Fixed high-gloss teak tables
- 2000 lb. Davit with power telescoping and rotating hydraulic boom
- Removable chocks for tender
- Helm station with engine controls, engine instrumentation and electronics
- Molded settee with cushions and hinged seating for storage below
- Welded aluminum and composite mast with electronics, anchor, light and lighting
- Teak deck
- Stainless rails around boat deck
- Uno control pad from whole boat audio/video system
- Port and starboard wing stations include electronic engine controls; jog steering, bow thruster control, rudder angle indicator, main engines start/stop and covers
- (2) 8-Man life rafts

Electronics

- Sea Tel 3004 satellite TV system with 8 receivers (US, Caribbean, Latin America)
- (2) Furuno radars with 19" LCD display and repeater on FB
- Furuno GPS in Pilothouse GP-90 and Flybridge
- Furuno FCV-1200L Color depth sounder with 15" LCD monitor NEC
- (3) ICOM VHF radios, (2) in Pilothouse IC-M602, (1) on Flybridge

- Raytheon VHF radio
- Furuno SSB – Not active
- Furuno Universal AIS
- Simrad autopilot AP-50
- B&G wind, depth & speed with full-function display
- Northern Airborne Technology G.P.I.R.B.
- Wireless remote access internet
- V.I.C. security system
- Nobeltec Navigation/Electronic chart system with 19" LCD display
- Tellular cellular phone system
- Elbex high resolution color camera system fixed camera on aft deck, starboard side deck and full pan/zoom/tilt camera in engine room and boat deck.
- ST 60 digital sounder located in captain's quarters
- Naiad Multi Sea 2000 stabilizers

Electrical Systems

- All AGM cell type batteries:
 - (2) banks of two 8D, 225 AMP batteries, wired in series for starting main engines (total of four) and (2) 8D, 225amp batteries one of each generator starting
 - (1) 24V battery bank for ship's service and (1) 12V DC starting
 - (1) 12V DC (2) 8D 225 AMP battery bank for electronics
 - (1) 70amp 12V DC battery charger for electronics
 - (1) 95amp 24V DC battery charger for ship's service bank
 - (1) 40amp 24V DC battery charger for main engine bank
 - (1) 40amp 12V DC for generator bank
- Vessel Information Control System (V.I.C.) with monitor in Pilothouse, keyboard on starboard forward of door and in crew quarters
- Main distribution panel located in crew area
- (2) 100amp WestportAcme/WPSY isolation transformers with one step automatic voltage adjustment
- Lightning protection with hull Dyna plate and lightening antenna
- Recessed Halogen light fixtures
- 24 V DC and 110 V AC indirect rope lighting
- (1) ACRRCL100 searchlight located on mast with dual controls
- (2) 100 amp 240 v single phase shore feeds with Glendenning cablemaster cord reels at port bustle, TV and phone outlet located at port bustle with (1) 100' TV/phone cord
- General lighting: Vimar & Leviton receptacles and switching throughout

Fore Deck

- Bow sun lounge
- Molded keyhole settee
- Teak decking
- Uno control pad from whole boat audio/video system

Engine Room and Mechanical Equipment

- (2) MTU/DDC 16V2000 engines (approx. 2100 hours May 2016)

- (2) 65 kW Northern Lights generators (6000 hours each)
- (2) 1200 GPD water makers Sea Recovery - Aqua Whisper
- Naiad stabilizer system Multi Sea 2000
- Headhunter black water treatment plant, title wave
- 16" Wesmar, 40hp hydraulic bow thruster with (4) station controls
- Air conditioning: Chilled water system with air handlers in salon, PH, galley, all SR's & crew area. Make-up aircsystem included. Chiller units include variable frequency drives. Approximate capacity 15 tons.
- 220V 2hp scuba air compressor
- Watertight door
- 18' Self-coiling air hose with quick disconnect
- 60 Gallon lube oil change system
- 48" Michigan Nibrall 5blade custom propellers
- 4" Aquamet shafts
- Fuel transfer pump with flow meter and timer
- Fuel filters: (1) Sea Pro 300 for each main engine and (1) Separ 2005MK for each generator
- Fuel gauges: Sight tubes in engine room and V.I. C. monitoring system
- Jastram port steering with dual enginedriven pumps and (4) steering stations: PH, FB, port and starboard and wing stations on FB
- FM200 fire supression system with manual/automatic controlsalso, additional fire suppression is located on electrical distribution panel
- Cast bronze Vee design struts
- 8-Drawer painted white tool box
- Stainless steel work bench with 4" vise
- (1) Storage cabinet on aft port bulkhead above workbench
- (2) Storage cabinets on forward bulkhead, (1) port and (1) starboard
- Fishing rod storage
- Tan Roppe flooring
- Fuel fills with dual fill/vent pipes vented overboard for fast filling
- All bronze thruhulls bonded with #8 or heavier wire and connected to transom zincs and shaft wipers
- 100 Gallon gas tank under hatch no swim step includes air operated diaphragm pump and fill nozzle.
- Exalto windshield wipers/washers with electronic control panel with synchronization

Exclusions

- "Lady Nan Ce" is a registered name and does not convey
- Sculpture in the lower foyer
- Brass fish in the salon
- Glass jellyfish sculpture
- All fishing, swimming, & diving equipment (e.g. fishing rods, tackle, masks, goggles, flippers, wet suits, tanks regulators, etc.)
- All china, crystal stemware, silverware, and galley utensils
- All clothing, including hats, shoes, etc.
- All other owner's and crew's personal effects

Exclusions

Owner's personal belongings.

Disclaimer

The Company offers the details of this vessel or yacht in good faith but cannot guarantee or warrant the accuracy of this information nor warrant the condition of the vessel. A buyer should instruct his representatives, agents, or his surveyors, to investigate such details as the buyer desires validated. This vessel or yacht is offered subject to prior sale, price change, or withdrawal without notice.

PHOTOS

Aft Deck



Aft Deck



Aft Deck



Aft Deck



Aft Deck



Salon



Salon



Salon



Salon / TV



Salon



Salon



Dining



Dining



Day Head



Galley



Galley



Galley



Dinette



Pilothouse



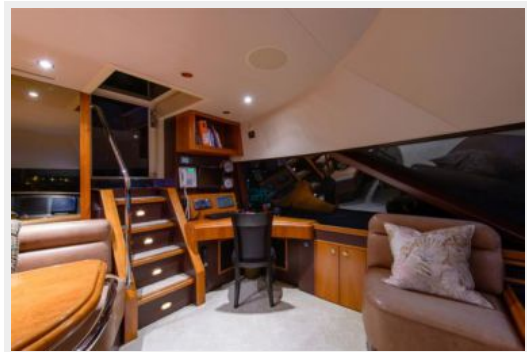
Pilothouse



Pilothouse / Settee



Pilothouse



Master Stateroom



Master Stateroom



Master Stateroom



Master Stateroom



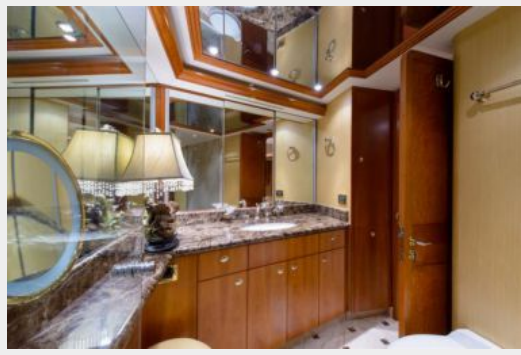
Master Stateroom



Master Stateroom



Master Head



Master Head



Master Head



Master Head



Lower Foyer



VIP Stateroom



VIP Stateroom



VIP Stateroom



VIP Head



Guest Stateroom / Port



Guest Stateroom / Port



Guest Head / Port



Guest Stateroom / Starboard



Guest Stateroom / Starboard



Guest Head / Starboard



Guest Head / Starboard



Flybridge / Helm



FLYbridge / Helm



Flybridge



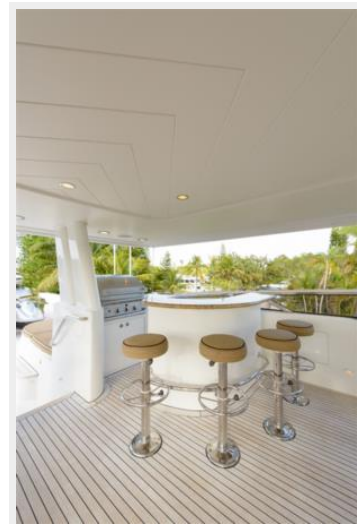
Flybridge



Flybridge / Seating



Flybridge / Bar



Fore Deck



Fore Deck



Walk-Around Deck



Sun Deck



Sun Deck



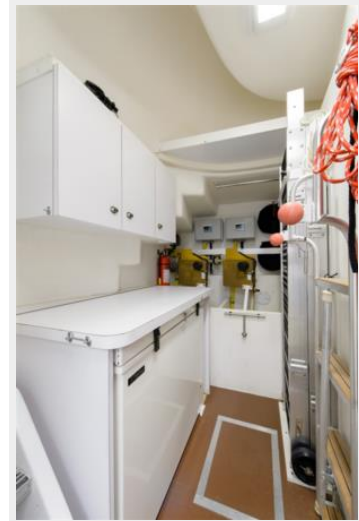
Bow



Bow



Crew Quarters



Crew Quarters



Crew Stateroom



Crew Stateroom



Crew Head



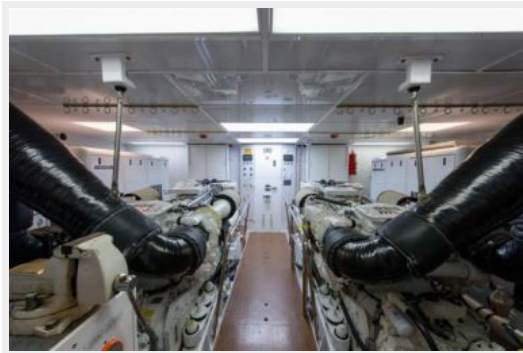
Utility Room



Utility Room



Engine Room



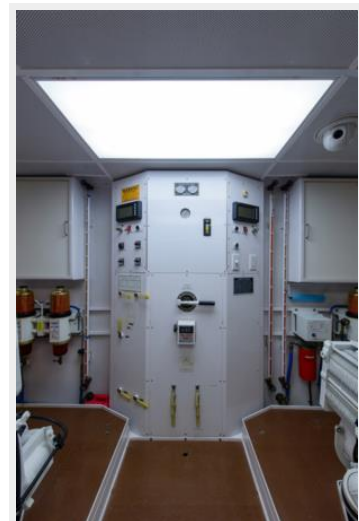
Engine Room



Engine Room



Engine Room



Engine Room



Engine Room



Engine Room



Engine Room



Transom



Transom



Aft View



General Arrangement



CONTACTS

Andrey Shestakov, leading yacht broker of the sales department of Shestakov Yacht Sales Inc. Shestakov Yacht Sales Inc., the official representative of the Miami/Fort Lauderdale FL headquarters.

Contact details

Email: andrey@shestakovyachtsales.com

Web: shestakovyachtsales.com/en/

Telephones

USA: +1(954)274-4435

Office hours

Monday – Saturday: 9:00 - 21:00 EDT

Sunday: **closed**

Address



Harbour Towne Marina, 850 NE 3rd St,
STE 213, Dania, FL 33004