

## MOVIN ON



**Year Built:** 1998

**Model:** Trawler Yacht

**Price:** PRICE ON APPLICATION

**LOA:** 38' (11.58mm)

**Beam:** 12.83

**Max Draft:** 4' (1.22mm)

Our experienced yacht broker, Andrey Shestakov, will help you choose and buy a yacht that best suits your needs **MOVIN ON** — n/a from our catalogue. Presently, at Shestakov Yacht Sales Inc., we have a wide variety of yachts available on our sale's list. We also work in close contact with all the big yacht manufacturers from all over the world.

If you would like to buy a yacht **MOVIN ON** — n/a or would like help answering any questions concerning purchasing, selling or chartering a yacht, please call **+1(954)274-4435**

# TABLE OF CONTENTS

TABLE OF CONTENTS	2
SPECIFICATIONS	4
Basic Information	4
Dimensions	4
Speed, Capacities and Weight	4
Accommodations	4
Hull and Deck Information	4
Engine Information	5
PHOTOS	6
Starboard View	6
Bow Windlass & Sampson Post	6
Foredeck Hatch	6
Enclosed Bridge	6
Foredeck	6
Bridge Helm	6
Raymarine C127 GPS Chartplotter	7
Upper Helm Instruments	7
Lower Helm	7
Lower helm Thrusters & Genstet Hours	7
EPIRB	8
Lower Helm Raymarine C-95 GPS/Plotter (2014)	8
Salon Forward	8
Salon Dinette	8
Galley - Down	9
Galley Microwave	9
Forward Companionway	9
Forward Stateroom	9
Forward Head	10

Master Stateroom	10
Master SR Head-Shower-Tub	10
Master SR Companionway Access	10
LEHR 2 1/2HP Propane O/B (2015)	11
NEW West Marine 9' Dingy (2015)	11
Aft Stateroom Companionway	11
210 HP Cummins (<1863 hrs.)	11
Side Decks	12
Northern Lights 8 KW GenSet (564 hrs.)	12
Fresh Bottom Paint - June 2015	12
Starboard Entry	12
America's Great Loop Cruiser's Association - Burgee	12
'Movin On' - Port Profile	12
CONTACTS	13
Contact details	13
Telephones	13
Office hours	13
Address	13

---

# SPECIFICATIONS

---

## Basic Information

---

**Category:** Trawler Yacht

**Sub Category:** Double Cabin

**Model Year:** 1998

**Year Built:** 1998

## Dimensions

---

**LOA:** 38' (11.58mm)

**LWL:** 34' 8" (10.57mm)

**Beam:** 12.83

**Max Draft:** 4' (1.22mm)

## Speed, Capacities and Weight

---

**Water Capacity:** 250 Gallons

**Holding Tank:** 40 Gal Gallons

**Fuel Capacity:** 250 Gal Gallons

## Accommodations

---

**Total Cabins:** 2

**Total Berths:** 3

**Sleeps:** 6

**Total Heads:** 2

## Hull and Deck Information

---

**Hull Material:** Fiberglass

**Hull Configuration:** Full Displacement

**Hull Color:** WHITE

---

## Engine Information

---

**Engines:** 1

**Manufacturer:** Cummins

**Engine Type:** Inboard

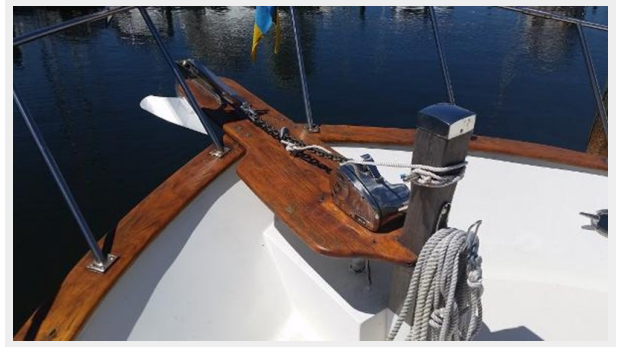
**Fuel Type:** Diesel

# PHOTOS

**Starboard View**



**Bow Windlass & Sampson Post**



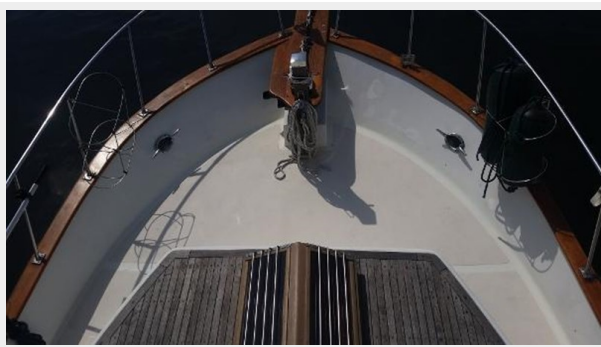
**Foredeck Hatch**



**Enclosed Bridge**



**Foredeck**



**Bridge Helm**



**Raymarine C127 GPS Chartplotter**



**Upper Helm Instruments**



**Lower Helm**



**Lower helm Thrusters & Genstet Hours**



**Lower Helm Raymarine C-95 GPS/Plotter  
(2014)**



**EPIRB**



**Salon Forward**



**Salon Dinette**





**Galley - Down**



**Galley Microwave**



**Forward Companionway**



**Forward Stateroom**



**Forward Head**



**Master Stateroom**



**Master SR Head-Shower-Tub**

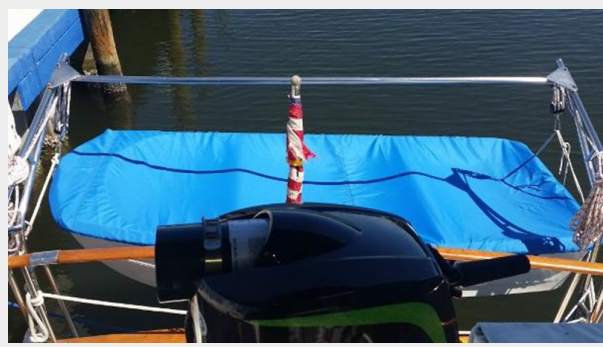


**Master SR Companway Access**

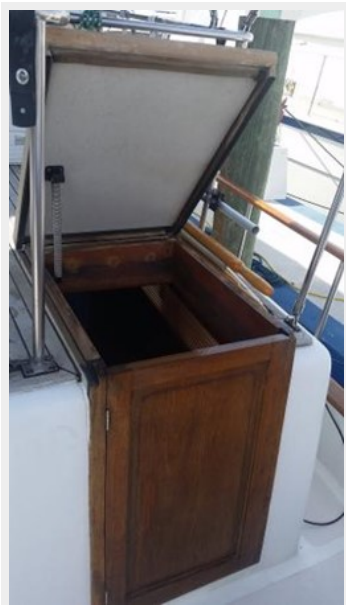


**LEHR 2 1/2HP Propane O/B (2015)**

**NEW West Marine 9' Dingy (2015)**



**Aft Stateroom Companionway**

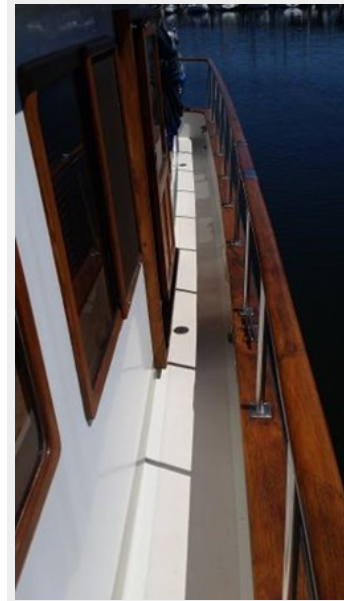
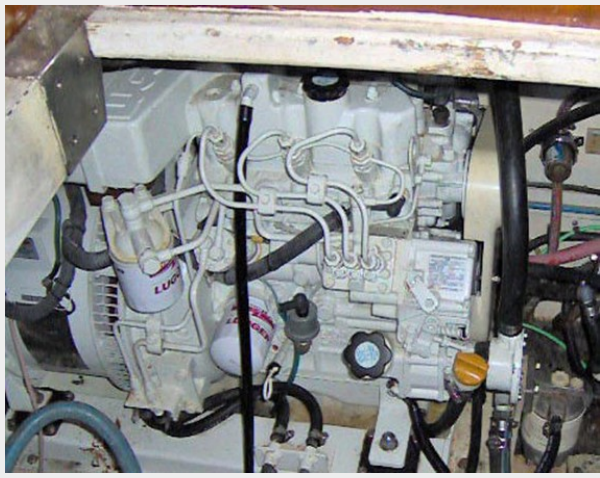


**210 HP Cummins (<1863 hrs.)**



**Side Decks**

**Northern Lights 8 KW GenSet (564 hrs.)**



**Fresh Bottom Paint - June 2015**

**Starboard Entry**



**'Movin On' - Port Profile**



**America's Great Loop Cruiser's Association  
- Burgee**



---

# CONTACTS

---

Andrey Shestakov, leading yacht broker of the sales department of Shestakov Yacht Sales Inc. Shestakov Yacht Sales Inc., the official representative of the Miami/Fort Lauderdale FL headquarters.

---

## Contact details

---

Email: [andrey@shestakovyachtsales.com](mailto:andrey@shestakovyachtsales.com)

Web: [shestakovyachtsales.com/en/](http://shestakovyachtsales.com/en/)

---

## Telephones

---

USA: +1(954)274-4435

---

## Office hours

---

Monday – Saturday: **9:00 - 21:00** EDT

Sunday: **closed**

---

## Address

---



Harbour Towne Marina, 850 NE 3rd St,  
STE 213, Dania, FL 33004