

TROPICAL DREAM — SEA RAY



Builder: SEA RAY

Year Built: 2015

Model: Motor Yacht

Price: PRICE ON APPLICATION

Location: United States

LOA: 50' 10" (15.49m)

Beam: 14' 8" (4.47m)

Min Draft: 4' 0" (1.22m)

Our experienced yacht broker, Andrey Shestakov, will help you choose and buy a yacht that best suits your needs **Tropical Dream — SEA RAY** from our catalogue. Presently, at Shestakov Yacht Sales Inc., we have a wide variety of yachts available on our sale's list. We also work in close contact with all the big yacht manufacturers from all over the world.

If you would like to buy a yacht **Tropical Dream — SEA RAY** or would like help answering any questions concerning purchasing, selling or chartering a yacht, please call **+1(954)274-4435**

TABLE OF CONTENTS

TABLE OF CONTENTS	2
SPECIFICATIONS	4
Overview	4
Basic Information	4
Dimensions	4
Speed, Capacities and Weight	4
Accommodations	4
Hull and Deck Information	5
Engine Information	5
DETAILED INFORMATION	6
Remarks	6
Electronics	6
Inside Equipment	6
Electrical Equipment	6
Outside Equipment/Extras:	6
Key Standard Features	6
Air Conditioning	6
Cabin Features	7
Cockpit	7
Helm Station	7
Forward Stateroom	8
Forward Stateroom/Head	8
Fuel System	8
Galley	9
Generators/Electricity	9
Hull and Deck	9
Mid-Cabin	10
Mid-Cabin/Head	10

Engines	10
Salon	10
Sunroom	11
Exclusions	11
Disclaimer	11
PHOTOS	12
CONTACTS	31
Contact details	31
Telephones	31
Office hours	31
Address	31

SPECIFICATIONS

Overview

Listing details to follow Manufacturer Provided Description

There comes a peace at the very center of everything, when the world pivots around you in perfect balance. Some people spend a lifetime trying to find this spot. Others simply settle into the solarium-like covered cockpit of the 510 Sundancer. Light streams in through endless acres of glass above and to every side and even follows you when you head below under SkyFlow's glass cathedral ceiling over the galley and salon. Dissolving the separation between indoor and outdoor helped the 510 Sundancer win the AIM Marine Group Editor's Choice Award. Its technical prowess and inspired execution ensured the win, and the peace you will find therein.

Basic Information

Category: Motor Yacht

Model Year: 2015

Year Built: 2015

Country: United States

Dimensions

LOA: 50' 10" (15.49m)

Beam: 14' 8" (4.47m)

Min Draft: 4' 0" (1.22m)

Speed, Capacities and Weight

Displacement: 38985 Pounds

Water Capacity: 110 Gallons

Holding Tank: 60 Gallons

Fuel Capacity: 400 Gallons

Accommodations

Total Cabins: 2

Total Heads: 2

Hull and Deck Information

Hull Material: Fiberglass

Engine Information

Manufacturer: Cummings

Model: QSC 550

Fuel Type: Diesel

DETAILED INFORMATION

Remarks

RECENTLY REDUCED \$50,000. SELLER IS VERY EAGAR, HE HAS FOUND HIS NEXT BOAT! WILL ENTERTAIN ALL OFFERS, NO TRADES PLEASE.

Electronics

CD player Cockpit speakers TV set - satellite TV Depthsounder GPS DVD player Plotter - Raymarine Radio

Inside Equipment

Oven - convection Air conditioning Hot water Battery charger Microwave oven Fresh water maker Electric bilge pump Washing machine Deep freezer Refrigerator Electric head

Electrical Equipment

Generator - Onan Shore power inlet

Outside Equipment/Extras:

Cockpit shower Swimming ladder Cockpit table Cockpit cushions Swim Platform

Key Standard Features

- Optional Zeus® propulsion with helm joystick & Skyhook® station keeper
- Climate-controlled cockpit sunroom
- Standard Raymarine® e125 Widescreen Radar/Chartplotter combo
- Standard LED flatscreen TV with remote DVD player in salon
- Fiberglass hardtop w/pneumatic sunroof
- Stereo with Wireless Bluetooth™ and media inputs
- Standard generator with sound shield

Air Conditioning

- Custom Integral Vent System
- Zone-Controlled Reverse-Cycle System (27,000 BTU) Upper Sunroom

- Zone-Controlled Reverse-Cycle System (32,000 BTU) Lower Cabin

Cabin Features

- Blinds, Silver Alloy
- Carbon Monoxide Monitors
- Carpet - Marine Grade
- Carpet Runners, Interior
- Curtains & Drape Trim
- Handrails
- Lighting, 12V Indirect
- Lighting, 12V Main - Overhead
- Outlet & Switch Plates - Polished Nickel Finish
- Outlets, 120V GFI Protected
- Outlets, 12V Accessory
- Pillows, Accent
- Wood Interior Finish - Cherry

Cockpit

- Beverage Holders (4)
- Carpet Liner, Snap-In - Cockpit
- Door, Transom
- Handrails, 316 Stainless Steel
- Hatch, Engine Service
- Lighting, Indirect
- Outlet, 120V GFI Protected
- Seating, U-Shaped
- Ship's Bell
- Steps, Boarding
- Table, Cockpit
-

Helm Station

- Alarms, High-Water: Bilge & Cabin
- Battery Parallel Switch - Engines
- Compass, Dash
- Dash, Gel Coated
- Horn, Air - (Concealed) Dual Trumpet
- Instrument Panel: High-Gloss

- SmartCraft Diagnostics
- SmartCraft Digital Throttle & Shift (DTS)
- SmartCraft VesselView Display
- Steering, Power w/Tilt Wheel
- Switch Panel: High Gloss (Backlit)
- Switches, Illuminated
- Windshield Defrosters

Forward Stateroom

- Bed, Full-Size Island Style w/Electrically Actuated Extension & Posturepedic Backrest; Elastic Foam Mattress & Drawer Storage Below
- Door, Privacy
- Flooring, Wood
- Hanging Lockers, Mirrored (2), Cedar Lined w/Lights & Shelves
- Headboard, Lattice Style (Rope Locker Bulkhead)
- Storage, Side Shelves

Forward Stateroom/Head

- Bathroom Tissue Holder
- Curtain, Shower
- Door, Privacy
- Flooring, Tile
- Handrails, Stainless Steel
- Head, VacuFlush®
- Power Vent, 12V
- Robe Hook
- Shower w/ Seat & Adjustable Shower Wand
- Storage, Medicine Cabinet - Mirrored
- Towel Bar
- Towel Cabinet
- Towels - Sea Ray
- Vanity w/Solid-Surface Countertop, Vessel Sink, Grohe Faucet & Storage Below

Fuel System

- Diesel Fuel System - Electric w/Transfer Pump
- Fuel Filters
- Fuel Lines (USCG - Type A-1)
- Fuel Tanks, Aluminum

Galley

- Coffeemaker, 120V
- Countertop, Solid-Surface w/Stainless-Steel Sink, Single-Lever Faucet & Sink Cover
- Handrail, Stainless Steel
- Microwave/Convection Oven
- Power Vent, 12V: w/Stainless Steel Grill
- Refrigerator/Freezer, Upright w/Stainless-Steel Front - Dual Voltage 120V/12V
- Storage, Drawers
- Storage, Upper & Lower
- Stove, Two Burner (Recessed to flush PUPS) 120V
- Trash Receptacle

Generators/Electricity

- 11.5 kW Onan Diesel (120/240V/60 Cycle)

Hull and Deck

- Bottom Paint
- Bow Rail
- Cleats, Custom Sea Ray (8) Thru-Bolted Stainless Steel
- Deck Fill Plates
- Deck Rails
- Gel Coat, Arctic White
- Graphics, Striping
- Handrails, 316 Stainless Steel
- Hatch, Deck Vent
- Hull Windows, 2 Large - Fixed Smoked Acrylic
- Lights, Navigation
- Portlights, Stainless Steel (6)
- Resin, High-Performance Vinylester
- Rub Rail, PVC w/Stainless Steel Insert
- Storage, Transom Wall
- Stringer System, Fiberglass
- Swim Platform, Bolt-On w/Concealed Stainless-Steel Four-Step Swim Ladder w/Integral Grab Handle
- Thru-Hull Fittings Stainless Steel
- Vent System, Engine Room
- Windshield Washer System
- Windshield Wipers: w/Delay & Speed Control
- Windshield, Tempered/Tinted Curved Glass w/Aluminum Frame

Mid-Cabin

- Bed, Queen Size w/ Innerspring Mattress, Pillows, Sheets & Coordinated Spread, & Storage Below
- Door, Privacy w/Full Length Mirror
- Flooring, Carpet
- Hanging Locker, Cedar Lined w/Light
- Hull Windows - Port & Stbd
- Mirror, Wall Accent
- Nightstands, Built-In w/Countertops
- TV, Flatscreen w/ DVD Player

Mid-Cabin/Head

- Bathroom Tissue Holder
- Curtain, Shower
- Door, Privacy - Mirrored w/Access from Mid-Stateroom
- Flooring - Tile
- Handrail, Stainless Steel
- Head, VacuFlush®
- Power Vent, 12V
- Robe Hook
- Shower
- Storage, Medicine Cabinet: Mirrored
- Towel Bar
- Towels - Sea Ray
- Vanity w/Solid-Surface Countertop, Vessel Sink, Grohe Faucet & Storage Below

Engines

- Twin Cummins QSC 550 HO Diesel V-Drive Inboards w/DTS (T-543 php - 405 kW)

Salon

- Entertainment Center Gaming System Port, MP3 Port w/12V Outlet, Stereo, Sony 12V AM/FM Single CD, Sirius Satellite Receiver w/Antenna, 6-Disc Changer, Amplifier, Speakers (4), iPod Interface w/Docking Station, Storage Cabinet - CD & Videotapes, TV, Flatscreen LCD (120V) w/Remote DVD Player
- Mirror, Wall Accent
- Seating, L-Shaped Sofa: w/Pull-Out Bed (Ultraleather HP)
- Steps, Entryway - Alum w/ Wood Treads

- Storage, Gunwale Cabinets

Sunroom

- Beverage Holders (2)
- Door, Sunroom Entry w/Aluminum Powder Coated Frame & Tempered/Tinted Glass (Sliding & Lockable)
- Hardtop, Fiberglass w/Pneumatic Retractable Sunroof & Overhead Lighting
- Lighting, Indirect LED
- Outlet, 120V GFI Protected
- Outlet, 12V Accessory
- Refrigerator, 120V, Stainless-Steel Drawer Style
- Seating, Pivoting Helm (2) w/Armrest, Reclining Backrests, Teak Footrests, Heavy-Duty Adjustable Pedestals
- Table, Sunroom - High Gloss Wood
- Wet Bar w/ Sink, Faucet, Solid-Surface Countertop, Stainless Steel Handrail, Trash Receptacle, & Storage Cabinet

Exclusions

Owner's personal belongings.

Disclaimer

The Company offers the details of this vessel or yacht in good faith but cannot guarantee or warrant the accuracy of this information nor warrant the condition of the vessel. A buyer should instruct his representatives, agents, or his surveyors, to investigate such details as the buyer desires validated. This vessel or yacht is offered subject to prior sale, price change, or withdrawal without notice.

PHOTOS

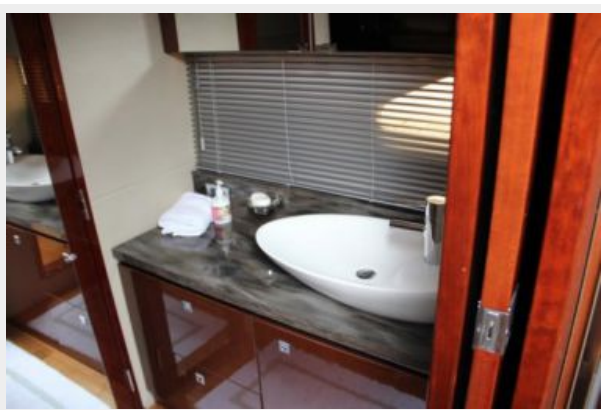


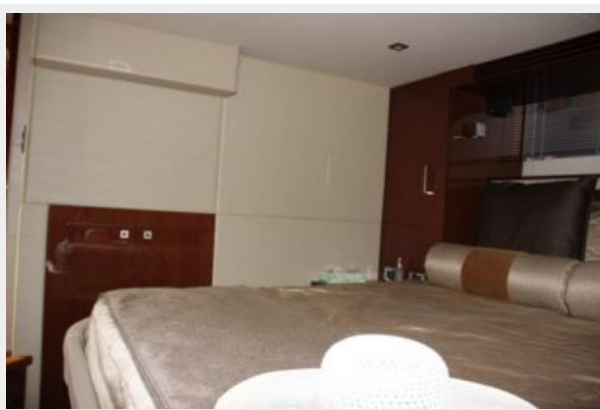




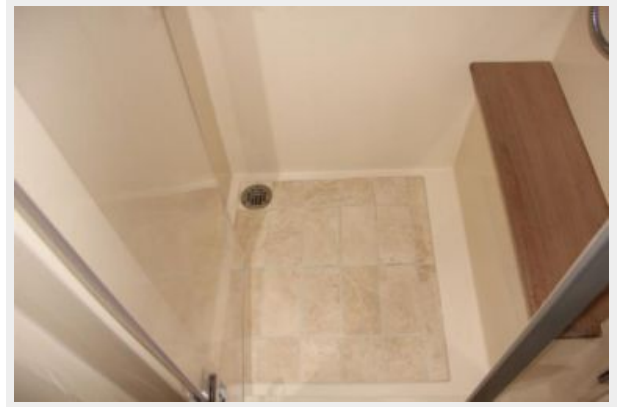


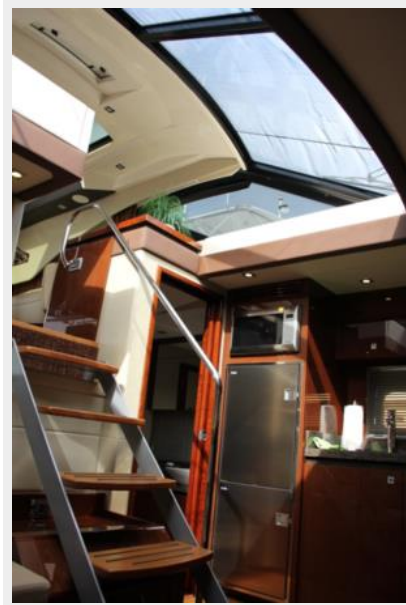




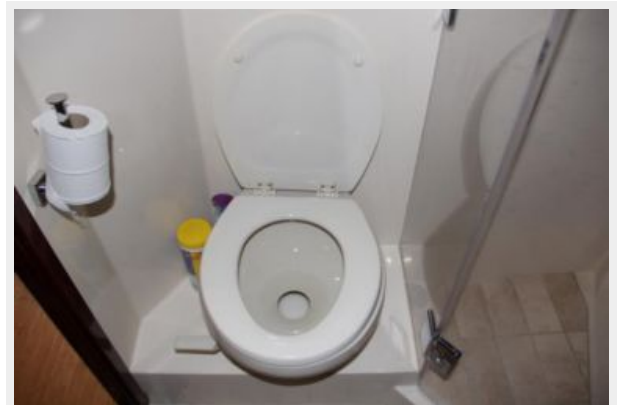




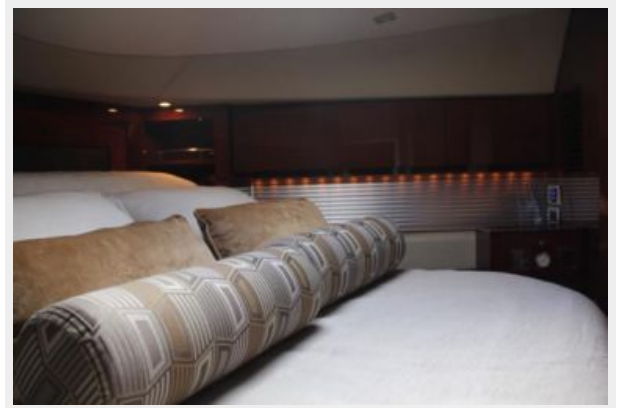






















CONTACTS

Andrey Shestakov, leading yacht broker of the sales department of Shestakov Yacht Sales Inc. Shestakov Yacht Sales Inc., the official representative of the Miami/Fort Lauderdale FL headquarters.

Contact details

Email: andrey@shestakovyachtsales.com

Web: shestakovyachtsales.com/en/

Telephones

USA: +1(954)274-4435

Office hours

Monday – Saturday: **9:00 - 21:00** EDT

Sunday: **closed**

Address



Harbour Towne Marina, 850 NE 3rd St,
STE 213, Dania, FL 33004