

## TROPICAL DREAM — SEA RAY



**Судостроитель:** SEA RAY

**Год постройки:** 2015

**Модель:** Моторная яхта

**Цена:** **ЦЕНА ЯХТЫ ПО ЗАПРОСУ**

**Местонахождение:** United States

**Длина общая:** 50' 10" (15.49m)

**Ширина:** 14' 8" (4.47m)

**Мин. осадка:** 4' 0" (1.22m)

Купить **Tropical Dream — SEA RAY** а также выбрать подходящую вам яхту из нашего каталога яхт вам поможет опытный яхтенный брокер Андрей Шестаков. На сегодняшний день компания **Shestakov Yacht Sales Inc.** имеет большое количество яхт в собственном списке продаж, а также тесно сотрудничает со всеми крупными яхтенными производителями по всему миру.

Для того чтобы купить яхту **Tropical Dream — SEA RAY** а также проконсультироваться по любому вопросу связанному с покупкой, продажей, чартером яхт позвоните по телефону **+7(918)465-66-44**.

# ОГЛАВЛЕНИЕ

---

ОГЛАВЛЕНИЕ	2
ХАРАКТЕРИСТИКИ	4
Обзор	4
Основная информация	4
Размеры	4
Скорость, вместимость и масса	4
Размещение	4
Корпус и палуба	5
Информация о двигателе	5
ПОДРОБНОЕ ОПИСАНИЕ	6
Remarks	6
Electronics	6
Inside Equipment	6
Electrical Equipment	6
Outside Equipment/Extras:	6
Key Standard Features	6
Air Conditioning	6
Cabin Features	7
Cockpit	7
Helm Station	7
Forward Stateroom	8
Forward Stateroom/Head	8
Fuel System	8
Galley	9
Generators/Electricity	9
Hull and Deck	9
Mid-Cabin	10
Mid-Cabin/Head	10

---

Engines	10
Salon	10
Sunroom	11
Исключения	11
Отказ от ответственности	11
ФОТОГРАФИИ	12
КОНТАКТЫ	31
Контактная информация	31
Телефоны	31
Время работы	31
Адрес	31

# ХАРАКТЕРИСТИКИ

## Обзор

### Listing details to follow Manufacturer Provided Description

There comes a peace at the very center of everything, when the world pivots around you in perfect balance. Some people spend a lifetime trying to find this spot. Others simply settle into the solarium-like covered cockpit of the 510 Sundancer. Light streams in through endless acres of glass above and to every side and even follows you when you head below under SkyFlow's glass cathedral ceiling over the galley and salon. Dissolving the separation between indoor and outdoor helped the 510 Sundancer win the AIM Marine Group Editor's Choice Award. Its technical prowess and inspired execution ensured the win, and the peace you will find therein.

## Основная информация

**Тип судна:** Моторная яхта

**Модельный год:** 2015

**Год постройки:** 2015

**Страна:** United States

## Размеры

**Длина общая:** 50' 10" (15.49m)

**Ширина:** 14' 8" (4.47m)

**Мин. осадка:** 4' 0" (1.22m)

## Скорость, вместимость и масса

**Водоизмещение:** 38985 Pounds

**Вместимость воды:** 110 Gallons

**Вместимость сточного бака:** 60 Gallons

**Объем топливного бака:** 400 Gallons

## Размещение

**Всего кают:** 2

**Всего ком. состава:** 2

---

## Корпус и палуба

---

**Материал корпуса:** Fiberglass

---

## Информация о двигателе

---

**Производитель:** Cummins

**Модель:** QSC 550

**Тип топлива:** Diesel

---

# ПОДРОБНОЕ ОПИСАНИЕ

---

## Remarks

---

**RECENTLY REDUCED \$50,000. SELLER IS VERY EAGAR, HE HAS FOUND HIS NEXT BOAT! WILL ENTERTAIN ALL OFFERS, NO TRADES PLEASE.**

## Electronics

---

CD player Cockpit speakers TV set - satellite TV Depthsounder GPS DVD player Plotter - Raymarine Radio

## Inside Equipment

---

Oven - convection Air conditioning Hot water Battery charger Microwave oven Fresh water maker Electric bilge pump Washing machine Deep freezer Refrigerator Electric head

## Electrical Equipment

---

Generator - Onan Shore power inlet

## Outside Equipment/Extras:

---

Cockpit shower Swimming ladder Cockpit table Cockpit cushions Swim Platform

## Key Standard Features

---

- Optional Zeus® propulsion with helm joystick & Skyhook® station keeper
- Climate-controlled cockpit sunroom
- Standard Raymarine® e125 Widescreen Radar/Chartplotter combo
- Standard LED flatscreen TV with remote DVD player in salon
- Fiberglass hardtop w/pneumatic sunroof
- Stereo with Wireless Bluetooth™ and media inputs
- Standard generator with sound shield

## Air Conditioning

---

- Custom Integral Vent System
- Zone-Controlled Reverse-Cycle System (27,000 BTU) Upper Sunroom

- Zone-Controlled Reverse-Cycle System (32,000 BTU) Lower Cabin

## Cabin Features

---

- Blinds, Silver Alloy
- Carbon Monoxide Monitors
- Carpet - Marine Grade
- Carpet Runners, Interior
- Curtains & Drape Trim
- Handrails
- Lighting, 12V Indirect
- Lighting, 12V Main - Overhead
- Outlet & Switch Plates - Polished Nickel Finish
- Outlets, 120V GFI Protected
- Outlets, 12V Accessory
- Pillows, Accent
- Wood Interior Finish - Cherry

## Cockpit

---

- Beverage Holders (4)
- Carpet Liner, Snap-In - Cockpit
- Door, Transom
- Handrails, 316 Stainless Steel
- Hatch, Engine Service
- Lighting, Indirect
- Outlet, 120V GFI Protected
- Seating, U-Shaped
- Ship's Bell
- Steps, Boarding
- Table, Cockpit
- 

## Helm Station

---

- Alarms, High-Water: Bilge & Cabin
- Battery Parallel Switch - Engines
- Compass, Dash
- Dash, Gel Coated
- Horn, Air - (Concealed) Dual Trumpet
- Instrument Panel: High-Gloss

- SmartCraft Diagnostics
- SmartCraft Digital Throttle & Shift (DTS)
- SmartCraft VesselView Display
- Steering, Power w/Tilt Wheel
- Switch Panel: High Gloss (Backlit)
- Switches, Illuminated
- Windshield Defrosters

---

## Forward Stateroom

---

- Bed, Full-Size Island Style w/Electrically Actuated Extension & Posturepedic Backrest; Elastic Foam Mattress & Drawer Storage Below
- Door, Privacy
- Flooring, Wood
- Hanging Lockers, Mirrored (2), Cedar Lined w/Lights & Shelves
- Headboard, Lattice Style (Rope Locker Bulkhead)
- Storage, Side Shelves

---

## Forward Stateroom/Head

---

- Bathroom Tissue Holder
- Curtain, Shower
- Door, Privacy
- Flooring, Tile
- Handrails, Stainless Steel
- Head, VacuFlush®
- Power Vent, 12V
- Robe Hook
- Shower w/ Seat & Adjustable Shower Wand
- Storage, Medicine Cabinet - Mirrored
- Towel Bar
- Towel Cabinet
- Towels - Sea Ray
- Vanity w/Solid-Surface Countertop, Vessel Sink, Grohe Faucet & Storage Below

---

## Fuel System

---

- Diesel Fuel System - Electric w/Transfer Pump
- Fuel Filters
- Fuel Lines (USCG - Type A-1)
- Fuel Tanks, Aluminum



---

## Galley

---

- Coffeemaker, 120V
- Countertop, Solid-Surface w/Stainless-Steel Sink, Single-Lever Faucet & Sink Cover
- Handrail, Stainless Steel
- Microwave/Convection Oven
- Power Vent, 12V: w/Stainless Steel Grill
- Refrigerator/Freezer, Upright w/Stainless-Steel Front - Dual Voltage 120V/12V
- Storage, Drawers
- Storage, Upper & Lower
- Stove, Two Burner (Recessed to flush PUPS) 120V
- Trash Receptacle

---

## Generators/Electricity

---

- 11.5 kW Onan Diesel (120/240V/60 Cycle)

---

## Hull and Deck

---

- Bottom Paint
- Bow Rail
- Cleats, Custom Sea Ray (8) Thru-Bolted Stainless Steel
- Deck Fill Plates
- Deck Rails
- Gel Coat, Arctic White
- Graphics, Striping
- Handrails, 316 Stainless Steel
- Hatch, Deck Vent
- Hull Windows, 2 Large - Fixed Smoked Acrylic
- Lights, Navigation
- Portlights, Stainless Steel (6)
- Resin, High-Performance Vinylester
- Rub Rail, PVC w/Stainless Steel Insert
- Storage, Transom Wall
- Stringer System, Fiberglass
- Swim Platform, Bolt-On w/Concealed Stainless-Steel Four-Step Swim Ladder w/Integral Grab Handle
- Thru-Hull Fittings Stainless Steel
- Vent System, Engine Room
- Windshield Washer System
- Windshield Wipers: w/Delay & Speed Control
- Windshield, Tempered/Tinted Curved Glass w/Aluminum Frame

---

## Mid-Cabin

---

- Bed, Queen Size w/ Innerspring Mattress, Pillows, Sheets & Coordinated Spread, & Storage Below
- Door, Privacy w/Full Length Mirror
- Flooring, Carpet
- Hanging Locker, Cedar Lined w/Light
- Hull Windows - Port & Stbd
- Mirror, Wall Accent
- Nightstands, Built-In w/Countertops
- TV, Flatscreen w/ DVD Player

---

## Mid-Cabin/Head

---

- Bathroom Tissue Holder
- Curtain, Shower
- Door, Privacy - Mirrored w/Access from Mid-Stateroom
- Flooring - Tile
- Handrail, Stainless Steel
- Head, VacuFlush®
- Power Vent, 12V
- Robe Hook
- Shower
- Storage, Medicine Cabinet: Mirrored
- Towel Bar
- Towels - Sea Ray
- Vanity w/Solid-Surface Countertop, Vessel Sink, Grohe Faucet & Storage Below

---

## Engines

---

- Twin Cummins QSC 550 HO Diesel V-Drive Inboards w/DTS (T-543 php - 405 kW)

---

## Salon

---

- Entertainment Center Gaming System Port, MP3 Port w/12V Outlet, Stereo, Sony 12V AM/FM Single CD, Sirius Satellite Receiver w/Antenna, 6-Disc Changer, Amplifier, Speakers (4), iPod Interface w/Docking Station, Storage Cabinet - CD & Videotapes, TV, Flatscreen LCD (120V) w/Remote DVD Player
- Mirror, Wall Accent
- Seating, L-Shaped Sofa: w/Pull-Out Bed (Ultraleather HP)
- Steps, Entryway - Alum w/ Wood Treads

- Storage, Gunwale Cabinets

## Sunroom

---

- Beverage Holders (2)
- Door, Sunroom Entry w/Aluminum Powder Coated Frame & Tempered/Tinted Glass (Sliding & Lockable)
- Hardtop, Fiberglass w/Pneumatic Retractable Sunroof & Overhead Lighting
- Lighting, Indirect LED
- Outlet, 120V GFI Protected
- Outlet, 12V Accessory
- Refrigerator, 120V, Stainless-Steel Drawer Style
- Seating, Pivoting Helm (2) w/Armrest, Reclining Backrests, Teak Footrests, Heavy-Duty Adjustable Pedestals
- Table, Sunroom - High Gloss Wood
- Wet Bar w/ Sink, Faucet, Solid-Surface Countertop, Stainless Steel Handrail, Trash Receptacle, & Storage Cabinet

## Исключения

---

При продаже яхты исключаются личные вещи владельца.

## Отказ от ответственности

---

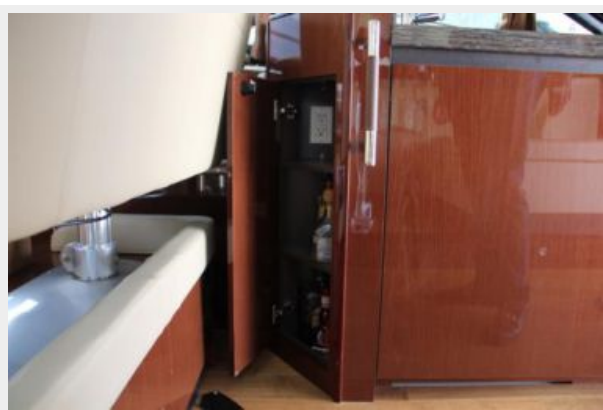
Компания предоставляет описание судна или яхты добросовестно, но не может гарантировать точность этой информации, а также не ручается за техническое состояние. Покупатель должен проинструктировать своих агентов или оценщиков исследовать представленную информацию более подробно, по собственному желанию. Продажа судна или яхты, изменение цены или снятие с продажи будет происходить без предварительного уведомления.

# ФОТОГРАФИИ



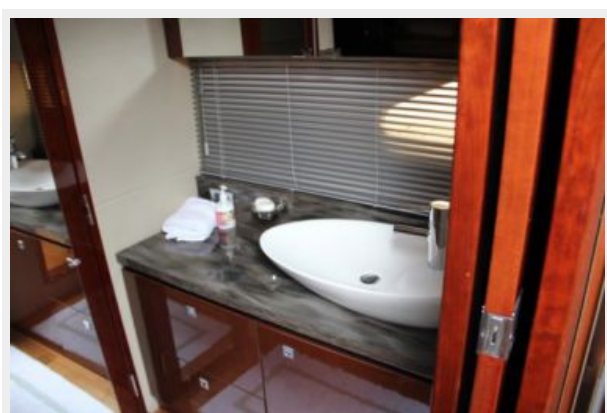


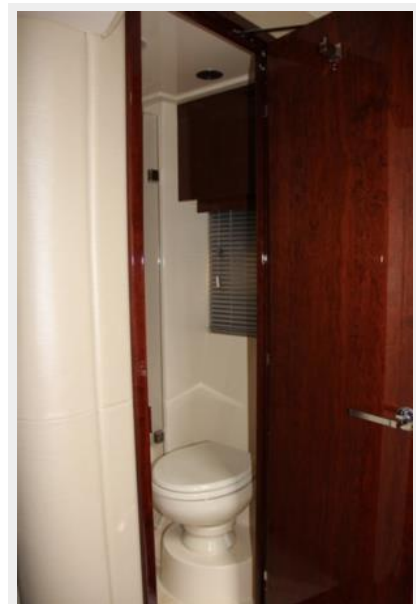
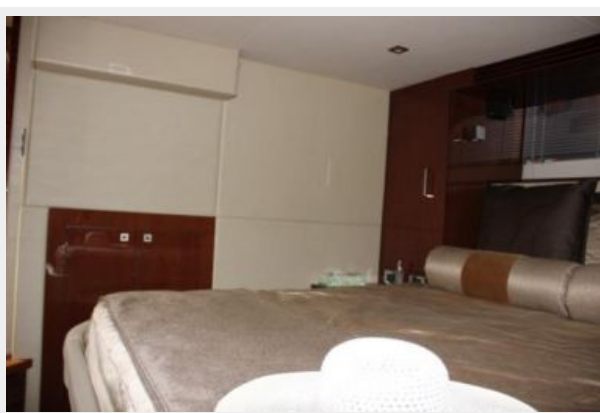




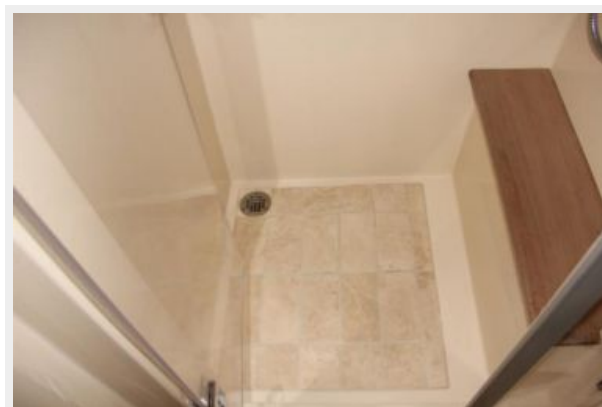


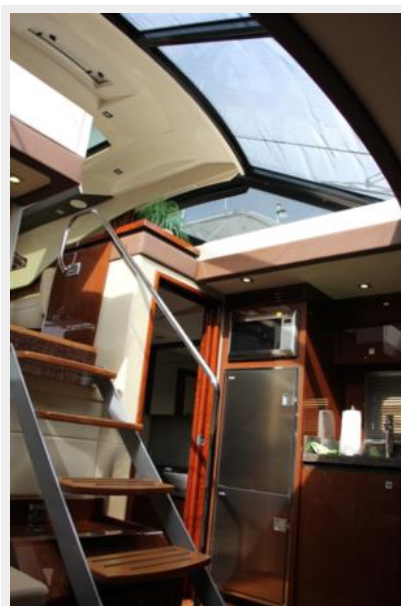




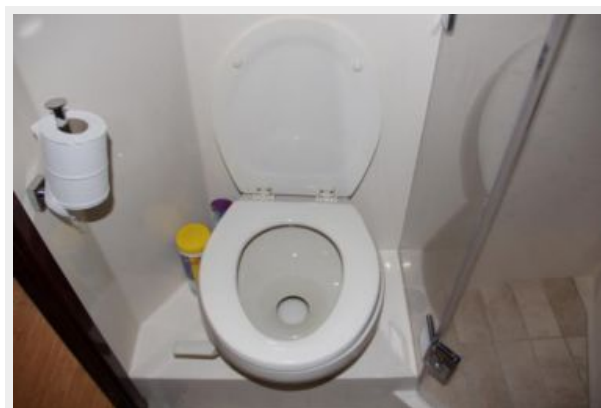








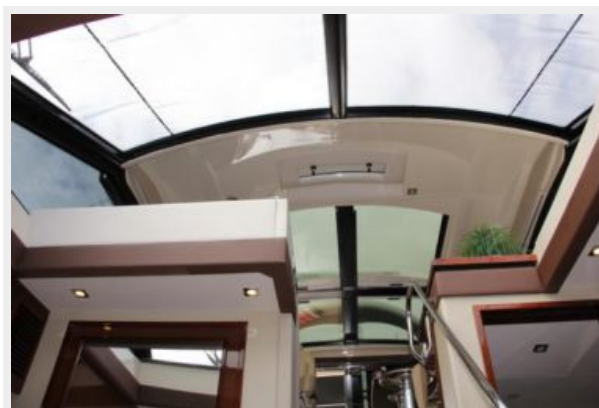




















# КОНТАКТЫ

---

Андрей Шестаков (Andrey Shestakov) – ведущий яхтенный брокер отдела продаж яхт и судов компании Shestakov Yacht Sales Inc. Официальный представитель Shestakov Yacht Sales Inc. для русскоговорящих клиентов в центральном офисе компании в Майами/Форт Лодердейл/Флорида/США.

## Контактная информация

---

Email: [andrey@shestakovyachtsales.com](mailto:andrey@shestakovyachtsales.com)

Web: [shestakovyachtsales.com](http://shestakovyachtsales.com)

## Телефоны

---

Краснодарский край: **+7(918)465-66-44**

США, Майами, Флорида: **+1(954)274-4435**

## Время работы

---

Понедельник – Суббота: **9:00 - 21:00**  
EDT

Воскресенье: **Закрето**

## Адрес

---



Harbour Towne Marina, 850 NE 3rd St,  
STE 213, Dania, FL 33004