

PANDEMONIUM — OYSTER MARINE LTD



Судостроитель: OYSTER MARINE LTD

Длина общая: 82' 0" (24.99m)

Год постройки: 2005

Модель: Крейсерская яхта

Цена: ЦЕНА ЯХТЫ ПО ЗАПРОСУ

Местонахождение: Tunisia

Купить Pandemonium — OYSTER MARINE LTD а также выбрать подходящую вам яхту из нашего каталога яхт вам поможет опытный яхтенный брокер Андрей Шестаков. На сегодняшний день компания Shestakov Yacht Sales Inc. имеет большое количество яхт в собственном списке продаж, а также тесно сотрудничает со всеми крупными яхтенными производителями по всему миру.

Для того чтобы купить яхту Pandemonium — OYSTER MARINE LTD а также проконсультироваться по любому вопросу связанному с покупкой, продажей, чартером яхт позвоните по телефону **+7(918)465-66-44**.

ОГЛАВЛЕНИЕ

ОГЛАВЛЕНИЕ	2
ХАРАКТЕРИСТИКИ	3
Обзор	3
Основная информация	3
Размеры	4
Размещение	4
Корпус и палуба	4
Информация о двигателе	4
ПОДРОБНОЕ ОПИСАНИЕ	5
Specification	5
Исключения	25
Отказ от ответственности	25
ФОТОГРАФИИ	26
КОНТАКТЫ	28
Контактная информация	28
Телефоны	28
Время работы	28
Адрес	28

ХАРАКТЕРИСТИКИ

Обзор

PRICE JUST REDUCED TO US\$1,750,000 \$800,000+ OYSTER SOUTHAMPTON REFIT IN 2015, INCLUDING NEW ELECTRONICS, NEW DECKS AND MANY OTHER MAJOR UPGRADES.

This rare shoal draft Oyster 82, Pandemonium has a raised saloon configuration, a traditional combination of elegant mahogany joinery, with cream painted bulkheads and soft light leather upholstery.

Pandemonium has established an enviable reputation as a successful charter boat in the Oyster fleet. Longtime owners enjoyed every adventure, including competing recently in the Loro Piana Superyacht Regatta, and sailing around the world in the recent Oyster World Rally. They now look toward downsizing to a smaller Oyster for more local sailing.

Easy to handle in-mast furling, and stout cutter rig, and stand alone Webasto heater point to the yachts design as a go-anywhere ocean boat, equally capable of high latitude cruising, or casual Caribbean racing. In true superyacht fashion, the custom layout below features an enormous ensuite owners head, complete with full bathtub, a bidet, and dual shower heads alongside a functional utility room with washer drier, extra freezer space, and convenient engine room access. The lower saloon conceals a perfect area to relax with a book, or watch TV.

Accommodation includes four cabins, all with ensuite heads, two plush guest cabins aft, and another forward, as well as a separate private cabin comfortably allowing for a crew of two, or three.

Awaiting her next adventure, Pandemonium is now lying at Oyster Palma and available for viewing at short notice. Location: Cruising Mediterranean

Основная информация

Тип судна: Крейсерская яхта

Подкатегория: Крейсерская яхта

Модельный год: 2005

Год постройки: 2005

Страна: Tunisia

Размеры

Длина общая: 82' 0" (24.99m)

Размещение

Всего кают: 4

Всего коек: 10

Корпус и палуба

Материал корпуса: Carbon Composite

Информация о двигателе

Производитель: Caterpillar

ПОДРОБНОЕ ОПИСАНИЕ

Specification

BROKER'S COMMENTS

\$800,000+ OYSTER SOUTHAMPTON REFIT IN 2015, INCLUDING NEW ELECTRONICS, NEW DECKS AND MANY

OTHER MAJOR UPGRADES.

This rare shoal draft Oyster 82, Pandemonium has a raised saloon configuration, a traditional combination of

elegant mahogany joinery, with cream painted bulkheads and soft light leather upholstery.

Pandemonium has established an enviable reputation as a successful charter boat in the Oyster fleet.

Longtime owners enjoyed every adventure, including competing recently in the Loro Piana Superyacht Regatta,

and sailing around the world in the recent Oyster World Rally.

Easy to handle in-mast furling, and stout cutter rig, and stand alone Webasto heater point to the yachts

design as a go-anywhere ocean boat, equally capable of high latitude cruising, or casual Caribbean racing. In

true superyacht fashion, the custom layout below features an enormous ensuite owners head, complete with

full bathtub, a bidet, and dual shower heads alongside a functional utility room with washer drier, extra

freezer space, and convenient engine room access. The lower saloon conceals a perfect area to relax with a

book, or watch TV. Accommodation includes four cabins, all with ensuite heads, two plush guest cabins aft,

and another forward, as well as a separate private cabin comfortably allowing for a crew of two, or three.

Awaiting her next adventure, Pandemonium is now lying at Oyster Palma and available for viewing at short

notice.

CONSTRUCTION

HULL NUMBER

82/04

HULL CONSTRUCTION

GRP hull is laid up single skin with structural stringers and cross members to Lloyds approved design specification.

HULL FINISH

Hull colour white with cove line and single boot top line in standard Oyster Blue.

DECK CONSTRUCTION

Moulded in GRP with balsa core for strength and insulation, featuring Oyster's renowned Deck Saloon profile with eyebrow styling (*repainted June 2015*).

DECK FINISH

Teak laid decks (*new June 2015*), *gloss varnished* teak capping rail with stainless steel fairleads. *New stainless steel rail fitted to outside of caprail for docking along pilings.*

KEEL

Shoal draft keel.

RUDDER

Fully protected skeg-hung *reduced* rudder.

EURCD

Built to comply with the requirements for Category A – Ocean.

DECK LAYOUT AND EQUIPMENT

ANCHOR

63kg (140lb) CQR with 100m (328') of 14mm (1/2") chain.

30kg (66lb) Fortress anchor and 100 meters of 24mm Octoplait nylon warp with 10 meters of 12mm chain.

DECK ACCESS

Stainless steel hinging boarding ladders, close up to form the side gates.

Gate to pushpit.

Stern bathing/boarding platform trimmed with laid teak. Steps in transom.

HATCHES

Oyster custom drop-down washboard system for main companionway.

Lewmar alloy-framed deck hatches (*replaced May 2015*).

Gebo alloy-framed coaming portlights.

Gebo opening hullports.

Rondal prisms in aft passageway and owner's cabin.

CANVAS WORK

Sprayhood to main companionway with stainless steel grabrail to aft edge.

TwinBiminis to cover helm positions and guest cockpit (new 2014).

Covers for cockpit table, pedestals and steering wheels.

Cockpit cushions.

DECK PLUMBING

Hot and cold freshwater deck shower in transom locker.

COCKPIT

Walk-through teak-laid cockpit.

COCKPIT TABLES

Two Varnished cockpit tables with drop down leaves on a stainless steel frame. *Both tables fitted out as a drinks fridges.*

STEERING

Whitlock Mamba rod and gearbox system, installed with twin remote pedestals, each incorporating a 1.2m (47") diameter destroyer type stainless steel wheel.

GENERAL

Stainless steelpulpit, pushpit and gateway midship stanchions.

Stainless steel hinging boarding ladders, close up to form the side gates.

Stainless steel mooring and cockpit cleats.

Stainless steel dorade vents.

Large lazarette locker.

Liferaft storage built into pushpit.

Stowage compartment with removable partition at forward end of anchor locker for kedge warp and chain stowage.

Stern quarter pushpit seats in teak and stainless steel.

Stern post or stainless steel arch at stern for navigation/KVH antenna and aft platform light.

Fishing rod holders.

Rondal prisms in aft passageway and owner's cabin.

Additional fuel locker.

RIG AND SAIL HANDLING

MAST and RIGGING

Rig – cutter .

Hood stoway mast with hydraulic in-mast furling and hydraulic in-boom outhaul.

Mast and boom repainted 2015

Full rod rigging replaced 2015

Hydraulic hoses replaced 2015

FLIR thermal camera fitted on the first spreader.

2 x CCTV camera's on mast.

HEADSAIL FURLING

Forestay furling – Reckmann hydraulic (*full service by Reckmann 2015*)

Headstay furling - Reckmann hydraulic (*full service by Reckmann 2015*)

WINCHES

Lewmar winches, all self-tailing –

2 x 88/3 SEST 3-speed, electric primaries.

2 x 77/2 SEST 2-speed, electric secondaries.

1 x 66 SEST electric mainsheet.

1 x 66 SEST electric main halyard.

1 x 66 CST staysail halyard at mast base

1 x 40 CST mainsheet traveller.

1 x 30 CST spinnaker pole.

SPINNAKER GEAR

Spinnaker pole stowed vertically on mast. Package includes chainplates, deck fittings, halyard, topping lift, pole lift, single sheet, guy, fore guy and all required blocks.

SAILS

By North Sails:

In-mast furling mainsail (*March 2014*).

Furling headsail (*August 2014*).

Furling staysail.

G2 Gennaker.

INTERIOR

GENERAL

Ten berths in four cabins, excluding the saloon.

Interior joinery finished in *mahogany* with Oyster 'Millennium' styling.

Designed to be modern and coordinated, while remaining practical and durable at sea.

Essential features include sculpted fiddles and grabrails, 'shadow-gap' joints between panels and Oyster custom knobs for lockers and drawers.

Oyster Deck Saloon profile with 'eyebrow' styling.

Surfaces in galley and heads in *Corian*.

Headlining in *Mariner ivory fabric*.

Upholstery in both saloons in '*Muirhead pale magnolia*' leather.

Headboards in double cabins and aft cabin seating in *Bordeux colored silk*.

Electric Oceanair pleated blinds in saloon area.

Oceanair skyscreens to all deck hatches.

Flyscreens to all opening hull and coachroof ports.

FORWARD SAIL LOCKER

With watertight door, A/C unit, workbench and compartmented sail stowage.

EN-SUITE PORT FORWARD

With Superflush toilet, washbasin and separate shower stall. *Heated towel rail.*

EN-SUITE STARBOARD FORWARD

With Superflush toilet, washbasin and separate shower stall.

Heated towel rail.

PORT FORWARD CABIN

To port with upper and lower berths and hanging locker. *Upper berth slides away when not in use. Watertight door and bulkhead. Latex foam composite mattresses.*

DOUBLE GUEST CABIN

To starboard with twin berth, nightstand and hanging locker. *Pullman berth. Latex foam composite mattress.*

GALLEY

To port

SINKS

Twin stainless steel sinks.

BOILING WATER TAP

Water boiler at sink.

DRINK WATER TAP

Drink water faucet with charcoal filter.

COOKER HOOD

Alpes Inox cooker hood.

HOB

Neff induction hob.

OVEN/MICROWAVE

Miele oven/microwave (New December 2013).

REFRIGERATOR/ FREEZER

Twin Frigomatic 24V water cooled units to cool the front opening galley refrigerators and also twin units for the top opening freezer. *Additional freezer under lower saloon sole.*

DISHWASHER

Miele G603 Slim Line.

LOWER SALOON

To starboard with L-shaped settee and coffee table.

NAVIGATION AREA

In upper level to starboard with forward-facing chart table and swivel seat, customized around the navigational equipment.

HIGH LEVEL SALOON

To port featuring a 4-sided wraparound settee surrounding a rectangular, expandable table on large pedestal base.

UTILITY ROOM

To port with Miele washing machine and tumble dryer (new 2014), wall mounted folding ironing board, wall mounted laundry rack, stowage locker for vacuum cleaner and other cleaning equipment.

STARBOARD AFT GUEST CABIN

With twin berths and hanging locker. *Carpeted. Pullman berth. Latex foam composite mattresses.*

EN SUITE HEAD STARBOARD AFT

With Vacuflush toilet, washbasin and separate shower stall. *Heated towel rail.*

OWNER'S STATEROOM

With *larger than standard* centerline double berth, settees, dressing table, and two large hanging lockers and abundant drawer and locker space. *9 inch inner spring mattress. Extra lockers. Carpeted. Watertight door and bulkhead.*

EN SUITE OWNER'S HEAD

To port with Vacuflush toilet, washbasin, *bath, bidet and two shower heads in a separate shower stall. Heated towel rail.*

ENTERTAINMENT

SOUND SYSTEM

Wireless Apple Airplay technology.

Power amp.

4 x pairs of speakers, controlled by Control 4 Home automation system.

5.1 Surround sound in upper saloon and master cabin.

TELEVISION

Movie server.

KVH M9 satellite TV antenna.

1 x Roku player.

FORWARD CABINS

Sharp 15" TV's.

UPPER SALOON

Samsung 46" 3D TV.

LOWER SALOON

Sony 32" TV.

STARBOARD AFT GUEST CABIN

Samsung 21" TV.

Sony PlayStation 4.

OWNER'S CABIN

Sony 46" 3D TV.

Blu-ray DVD player.

ENGINEERING

ENGINE

Cummins QSL9 330hp.

ENGINE HOURS

Approximately 6,600 at February 2016.

PROPELLER

MaxProp 3-bladed 825mm (32") feathering propeller. Serviced 2015.

ROPE CUTTER

Rope cutter on shaft.

ALTERNATORS

Separate alternators for charging of engine batteries, domestic supply and generator batteries.

GENERATOR

2 x Onan MDKBU 27kw, 220V, AC, 50hz.

GENERATOR HOURS

Port Generator: Approximately 4,030.6 at February 2016.

Starboard Generator: Approximately 4,479.4 at February 2016.

BOWTHRUSTER

Hydraulic Lewmar 30hp retractable.

STEERING SYSTEM

Whitlock Mamba rod and gearbox system, installed with remote pedestals, each incorporating a 1.2m (47") diameter destroyer type stainless steel wheel. Drinks holder to port pedestal steering pedestal.

HYDRAULICS

Lewmar 4000 Commander system located in engine room to operate

headsail furling, staysail furling, windlass, mainsail furling and mainsail outhaul.

AIR CONDITIONING

220v Cruisair reverse cycle system, comprising of 3 x 16,000 BTU units, 1 x 12,000BTU until and 2 x 10,000 BTU units to give a total of 80,000BTU's.

Remote compressors mounted in engine room for aft cabins with separate evaporators in each cabin.

HEATING

Twin Webasto Thermo 90 heaters mounted in the lazarette with 10 x fancoil units. These units are arranged so that one unit serves the port side and the other unit the starboard side.

VENTILATION

Woods forced air ventilation system giving approximately 9 air changes per hour, per sleeping cabin.

ICEMAKER

U-line 95 with dedicated 24DC to 220v AC inverter, produces over 20lbs of ice per day.

WATERMAKER

2 x Seafresh 260A 600 gallon per day units with remote controls.

TANKAGE AND PLUMBING

FUEL

3,500 liters approximately (770 imp/925 US gallons) in 2 GRP tanks.

WATER

3,000 liters approximately (660 imp/792 US gallons) in 2 GRP tanks.

TANK TENDER GAUGES

*Fitted at the engine room to read the content of fuel and water tanks at the navigation station.
Fitted in engine room.*

HOT WATER

From two insulated approximately 54 litre (12 imp/14 US gallons) tanks by thermostatically controlled 220V, 2kw immersion heater elements powered by the generator or dockside power. One tank serves the area forward of the engine room and the other aft of the engine room.

PRESSURISED HOT AND COLD FRESHWATER SYSTEM

Includes an additional pump so that the forward and aft ends are serviced by separate pumps with valving enabling either pump to run the whole boat.

HOLDING TANKS

5 x GRP greywater tanks located in the boat, each fitted with a float switch and a Whale Gulper pump giving automatic evacuation of all showers and washbasins. The galley sinks pump directly overboard via a Whale Gulper pump activated by a toggle switch.

3 x polypropylene blackwater tanks are installed as standard, one forward and three aft. Each tank is configured for gravity discharge with additional ability to pump out from on deck. The tanks are fitted with Wema electric tank capacity gauges. 3 x Blackwater tanks, one forward, two aft.

ELECTRICS

SHIP'S SUPPLY

24V.

RINGMAIN

Mains AC ring main with 10 double European style sockets located as appropriate within the layout in dark brown finish.

OTHER ELECTRICAL SOCKETS

12V 'cigar lighter' sockets at chart table and aft cabin.

4V socket in anchor locker for anchor light.

BATTERIES

8 x 6V Surette Rolls batteries giving 1,640Ah at 24V to domestic supply (replaced 2011).

24V battery bank giving 240Ah to engine starting (replaced Feb 2016).

2 x 12V batteries giving 120Ah to each generator (replaced Nov 2015).

12V battery bank giving 120Ah to navigation equipment (replaced April 2015).

BATTERY MANAGEMENT

3 x Mastervolt MASS 100A/24V battery chargers, *including x 1 extra.*

Masterlink MICC charger controller also acting as a voltmeter and ammeter is fitted to accurately monitor the ship's batteries.

Emergency link system between the domestic and engine start battery banks.

INVERTERS

Mastervolt 24V/5000W, plus Mastervolt 24V/3000W as backup.

SHOREPOWER

2 x 50 amp dockside power cables, each, 3-core double insulated PVC 23m in length. Hubbell sockets are located in the transom. The dockside end of the cables are fitted with a 3-pin, 16 amp plug.

INTERIOR LIGHTING

Downlight type LED lights in polished chrome finish, with downlighters

over reading areas (new 2015)

Fluorescent lights and down-lights in each heads, as well as over the galley

Work surfaces

Reading light for each berth

Automatic light to drinks locker

Red "courtesy" footlights at deck saloon steps

Dimmer to upper saloon and aft cabin

Red halogen light at chart table

EXTERIOR LIGHTING

Boom light over cockpit table and pedestals.

Pair of lower spreader lights and up lights on all spreaders.

2 x lights mounted in lazarette.

10 x LED lamps in cockpit area.

12 x LED lamps by bulwarks.

Aqua Signal 55 bow and stern lights.

Steaming/deck floodlight.

Tri-white anchor/navigation light at masthead.

NAVIGATION AND COMMUNICATION

COMPASSES

Each pedestal fitted with a flush mounted SIRS Marine Major 150mm diameter compass with internal lighting and a substantial stainless steel grabrail.

SAILING INSTRUMENTS

Raymarine i70's:

3 x i70's at companionway console.

4 x i70's at port pedestal compass display.

2 x i70's, 1 x compass display at starboard pedestal.

6 x i70's at chart table.

1 x i70's in owner's stateroom.

1 x i70's in crew cabin.

GPS

Furuno 32 with antenna on pushpit.

Raystar 120 I interfaced into Raymarine system.

RADAR/PLOTTER

Raymarine E125 touchscreen radar 12" color display at chart table and 24" radome on mast.

Raymarine E125 touchscreen radar/plotter 12" color display at pedestal.

AUTOPILOT

Raymarine Smart Pilot S3G with Whitlock Mamba 24V 1/2hp drive unit close coupled to the

reduction gearbox at the rudder head.

P70 control head mounted on the steering pedestal.

Back up pilot consisting of a computer unit, rudder reference unit and compass with control by a plug in ST6000R remote handset.

WINDEX

Windex at masthead.

NAVTEX

Furuno 300 with antenna

VHF RADIO

2 xRaytheon 240E with speaker at port pedestal and chart table.

Horn/hailer system with PA.

SSB RADIO

Icom 802 with AT140 ATU.

Wide copper strip and twin large ground plates as SSB earth.

Backstay insulators.

Bonito Board terminal software with modem.

SATELLITE PHONE

Inmarsat Fleet broadband FB250 phone system configured for email and phone with active masthead aerial.

PC

Marine computing Atlantic Tower PC 601020 mounted under the chart table. Wireless keyboard and mouse. Internal modem.

15" screen mounted outboard at the chart table for email, office work etc.

Printer mounted on chart table.

SAFETY

LIFERAFT

2 x Lifeguard Oceanic 6 person rafts with E packs in containers. (Date of last service not known).

RADAR REFLECTOR

Firdell blipper on mast.

BILGE PUMPS

Henderson MkV manual bilge pump (rated at 135 lpm) operated from the side of the cockpit and fitted with a metal deck plate.

Electric bilge pump Par 34600 with Par hydro air switch.

Jabsco engine driven bilge pump.

DECK SAFETY

2 x lifebuoys with lights.

Webbing jackstays.

MOB button at port pedestal.

Emergency tiller

FIRE EXTINGUISHERS

Various including automatic fire extinguisher in engine bay.

ALARMS

Bilge alarm.

Engine room fire alarm.

GENERAL

RIB/DINGHY

2009 Novurania 400DL tender.

Yamaha 50hp outboard.

Second collapsible two person dinghy and 3.5hp Mercury outboard

WARPS AND FENDERS

COMPRESSOR

Compressor / four cylinders in lazarette

CROCKERY

Oyster customized Wedgwood bone china crockery.

CUTLERY

Oyster customized Sheffield stainless steel cutlery.

SAFE

4-brick safe in aft cabin

ASSORTED SPARES AND MANUALS

OYSTER SOUTHAMPTON 2015 REFIT

Teak decks replaced

Mast, boom and spreaders repainted

Standing rigging replaced

Jammers and winches serviced

Fridge and freezers serviced

Electronics upgraded

New saloon blinds

Saloon window areas repainted

Varnish works

FLIR camera and CCTV installed

NB All personal belongings and all other items not expressly listed in the above inventory are excluded from the sale.

Artwork is excluded.

Viewing through Oyster Brokerage

Issue 11 (GE/OB/ph)

In this transaction we are acting as Brokers only. We are informed that this sale is not related to the Owner's business, trade or profession. Whilst every care has been taken in their preparation, the correctness of these particulars is not guaranteed. The particulars are intended only as a guide and they do not constitute a term of contract. A prospective buyer is strongly advised to check the particulars and where appropriate to have the vessel fully surveyed and inspected, sea

trialled and opened up.

Исключения

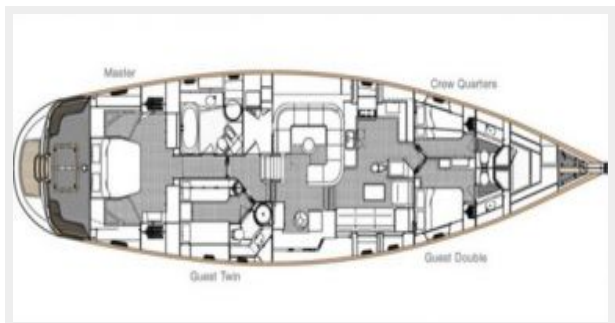
При продаже яхты исключаются личные вещи владельца.

Отказ от ответственности

Компания предоставляет описание судна или яхты добросовестно, но не может гарантировать точность этой информации, а также не ручается за техническое состояние. Покупатель должен проинструктировать своих агентов или оценщиков исследовать представленную информацию более подробно, по собственному желанию. Продажа судна или яхты, изменение цены или снятие с продажи будет происходить без предварительного уведомления.

ФОТОГРАФИИ





КОНТАКТЫ

Андрей Шестаков (Andrey Shestakov) – ведущий яхтенный брокер отдела продаж яхт и судов компании Shestakov Yacht Sales Inc. Официальный представитель Shestakov Yacht Sales Inc. для русскоговорящих клиентов в центральном офисе компании в Майами/Форт Лодердейл/Флорида/США.

Контактная информация

Email: andrey@shestakovyachtsales.com

Web: shestakovyachtsales.com

Телефоны

Краснодарский край: **+7(918)465-66-44**

США, Майами, Флорида: **+1(954)274-4435**

Время работы

Понедельник – Суббота: **9:00 - 21:00**
EDT

Воскресенье: **Закрито**

Адрес



Harbour Towne Marina, 850 NE 3rd St,
STE 213, Dania, FL 33004