

## GLAZMOR — FERNAND



**Builder:** Fernand

**Year Built:** 2009

**Model:** Catamaran

**Price:** PRICE ON APPLICATION

**Location:** France

**LOA:** 58' 0" (17.68m)

**Beam:** 25' 0" (7.62m)

**Max Draft:** 4' 5" (1.35m)

**Cruise Speed:** 8 Kts. (9 MPH)

**Max Speed:** 14 Kts. (16 MPH)

Our experienced yacht broker, Andrey Shestakov, will help you choose and buy a yacht that best suits your needs **GLAZMOR — Fernand** from our catalogue. Presently, at Shestakov Yacht Sales Inc., we have a wide variety of yachts available on our sale's list. We also work in close contact with all the big yacht manufacturers from all over the world.

If you would like to buy a yacht **GLAZMOR — Fernand** or would like help answering any questions concerning purchasing, selling or chartering a yacht, please call **+1(954)274-4435**

# TABLE OF CONTENTS

TABLE OF CONTENTS	2
SPECIFICATIONS	4
Overview	4
Basic Information	5
Dimensions	5
Speed, Capacities and Weight	5
Accommodations	5
Hull and Deck Information	6
Engine Information	6
DETAILED INFORMATION	7
GENERAL	7
Dimensions	8
Engines	8
Tankage	8
Accommodations	8
Galley	9
Electronics	9
Electrical	9
Engines 2	10
Safety Equipment	10
Additional information	10
Exclusions	10
Disclaimer	10
PHOTOS	12
CONTACTS	25
Contact details	25
Telephones	25
Office hours	25

Address

25

---

# SPECIFICATIONS

---

## Overview

---

GLAZMOR is a true world class transoceanic voyager with a 4,500 mile range and twin 185 HP Cummins diesels that sip fuel or will push the vessel at 14 knots if desired.. Whether you are looking to cruise the Big Loop in comfort or cross the Atlantic to the Mediterranean, this cat will get you there efficiently and safely.

GLAZMOR was specifically designed for long-range cruising by the renowned multihull designer Marc Lombard. With her generous beam of 25 feet and 4 1/2 foot draft she is very comfortable in any seas.

Her owners are experienced world travelers and worked with the designer to build the perfect vessel which can be handled by a couple while extended cruising with simple and reliable systems.

They have traveled extensively with GLAZMOR throughout Europe, France, Scotland, England, Scotland , Ireland and on to Norway. Also the Caribbean Sea, West Indies and the Bahamas and the entire East Coast of the USA.

ON entering GLAZMOR from the generous aft deck the large U-shaped galley is to the starboard side of the huge main salon. Forward of the galley is a large U-shaped dining settee. There is an L-shaped couch on the port side with built in bookshelves. Forward of this area on the port is a convenient open office space. The salon/galley/dinette/office space is approx. 375 square feet with over 7 foot headroom.

There are 10 opening LEWMAR windows ventilate this area with large sliding doors providing access to the aft deck.

The master stateroom is forward and down with 7+ foot headroom, a walk-around island bed and 5 opening LEWMAR hatches. A full en-suite bathroom with electric head and walk-in shower is located in the starboard hull.

The raised pilot house is up and forward of the salon area and above the master cabin. There are multiple windows to provide full 360 degree visibility. There is a queen sized pilot berth in the pilot house and port and starboard doors accessing the side decks and bow.

GLAZMOR'S twin Cummins 185 HP engines sip fuel and Coupled with 32", four-bladed propellers power the vessel to 14 knots if desired

The incredibly designed engine rooms are a marvel of design for the efficiency minded owner. The engines are level at waist height driving a uniquely designed belt driven horizontal shaft that increases efficiency. The engine rooms have sea chests that eliminate the need for excessive through hulls. There is a 30 GPH watermaker also aboard.

The degree of engineering and design that went into GLAZMOR must be seen to be understood. She is completely capable of cruising with out the need of shore ties but her electrical system will accept world wide connections. The fuel tanks are actually the hulls themselves with clear access windows to visual inspect the fuel levels or provide access for cleaning if needed.

GLAZMOR is impeccably clean in all aspects appearing to have just come off the line. This is a must see for anyone with adventure on the mind who wishes to cruise without the normal expenses of world capable vessels and crew. She is absolutely ready to take you anywhere in comfort....and economically.

NOT FOR SALE TO U.S. CITIZENS OR U.S. RESIDENTS IN U.S. WATERS.

## Basic Information

---

**Category:** Catamaran

**Model Year:** 2009

**Year Built:** 2009

**Country:** France

## Dimensions

---

**LOA:** 58' 0" (17.68m)

**LWL:** 58' 0" (17.68m)

**LOD:** 58' 6" (17.83m)

**Beam:** 25' 0" (7.62m)

**Max Draft:** 4' 5" (1.35m)

## Speed, Capacities and Weight

---

**Cruise Speed:** 8 Kts. (9 MPH)

**Max Speed:** 14 Kts. (16 MPH)

**Max Speed Range:** 4500 Kts.

**Displacement:** 55115 Pounds

**Water Capacity:** 78 Gallons

**Holding Tank:** 223 Gallons

**Fuel Capacity:** 615 Gallons

## Accommodations

---

**Total Berths:** 3

**Total Heads:** 2

---

## Hull and Deck Information

---

**Hull Material:** Composite

## Engine Information

---

**Engines:** 2

**Manufacturer:** Cummins

**Model:** 6 Cyl

**Engine Type:** Inboard

**Fuel Type:** Diesel

---

# DETAILED INFORMATION

---

## GENERAL

---

GLAZMOR is a true world class transoceanic voyager with a 4,500 mile range and twin 185 HP Cummins diesels that sip fuel or will push the vessel at 14 knots if desired.. Whether you are looking to cruise the Big Loop in comfort or cross the Atlantic to the Mediterranean, this cat will get you there efficiently and safely.

GLAZMOR was specifically designed for long-range cruising by the reknown multihull designer Marc Lombard. With her generous beam of 25 feet and 4 1/2 foot draft she is very comfortable in any seas.

Her owners are experienced world travelers and worked with the designer to build the perfect vessel which can be handled by a couple while extended cruising with simple and reliable systems.

They have traveled extensively with GLAZMOR throughout Europe, France, Scotland, England, Scotland , Ireland and on to Norway. Also the Caribbean Sea, West Indies and the Bahamas and the entire East Coast of the USA.

ON entering GLAZMOR from the generous aft deck the large U-shaped galley is to the starboard side of the huge main salon. Forward of the galley is a large U-shaped dining settee. There is an L-shaped couch on the port side with built in bookshelves. Forward of this area on the port is a convenient open office space. The salon/galley/dinette/office space is approx. 375 square feet with over 7 foot headroom.

There are 10 opening LEWMAR windows ventilate this area with large sliding doors providing access to the aft deck.

The master stateroom is forward and down with 7+ foot headroom, a walk-around island bed and 5 opening LEWMAR hatches. A full en-suite bathroom with electric head and walk-in shower is located in the starboard hull.

The raised pilot house is up and forward of the salon area and above the master cabin. There are multiple windows to provide full 360 degree visibility. There is a queen sized pilot berth in the pilot house and port and starboard doors accessing the side decks and bow.

GLAZMOR'S twin Cummins 185 HP engines sip fuel and Coupled with 32", four-bladed propellers power the vessel to 14 knots if desired

The incredibly designed engine rooms are a marvel of design for the efficiency minded owner. The engines are level at waist height driving a uniquely designed belt driven horizontal shaft that increases efficiency. The engine rooms have sea chests that eliminate the need for excessive through hulls. There is a 30 GPH watermaker also aboard.

The degree of engineering and design that went into GLAZMOR must be seen to be understood. She is completely capable of cruising with out the need of shore ties but her electrical system will accept world wide connections. The fuel tanks are actually the hulls themselves with clear access windows to visual inspect the fuel levels or provide access for cleaning if needed.

GLAZMOR is impeccably clean in all aspects appearing to have just come off the line. This is a must see for anyone with adventure on the mind who wishes to cruise without the normal expenses of world capable vessels and crew. She is absolutely ready to take you anywhere in comfort....and economically.

OR U.S. RESIDENTS IN U.S. WATERS.

---

## Dimensions

DimensionsLOA: 60 ft 0 in Beam: 25 ft 0 in LWL: 58 ft 0 in Maximum Draft: 4' 6" Displacement: 55115 lbs

---

## Engines

EnginesEngine 1: Engine Brand: Cummins Year Built: 2009 Engine Type: Inboard Engine/Fuel Type: Diesel Location: Port Engine Hours: 2150

Engine Power: 185 HP Engine 2: Engine Brand: Cummins Year Built: 2009 Engine Type: Inboard Engine/Fuel Type: Diesel Location: Starboard Engine Hours: 2160 Engine Power: 185 HP

---

## Tankage

TanksFresh Water Tanks: Fiberglass (250 Gallons) Fuel Tanks: Fiberglass (2430 Gallons) Holding Tanks: (449 Gallons)

30 GPH water maker

---

## Accommodations

- Spacious, 375 square foot salon area including dining table, desk area, L-shape sofa and open U-shaped galley
- Raised Pilot House with panoramic view, Full navigation and pilot berth and side doors.
- Owner's cabin forward on main deck with with large island bed, large opening windows and ample storage
- Owner's bathroom with fresh-water electric toilet and walk-in stall shower, separate down the stbd hull forward



- One guest cabin with private bathroom in port hull forward with fresh-water electric toilet and stall shower
- Laundry room with 220V 5.5kg washer dryer amidships in port side hull
- Pantry with refrigerator, freezer and storage amidships in starboard hull
- Central 220V vacuum cleaner that reaches throughout the boat
- Aft cockpit covered by hard top and equipped with side curtains
- Large stand-up engine rooms easily accessible amidships inside the hulls
- Water heater 100l 220V
- 220V low energy & fluorescent light bulbs
- Oak interior finish

## Galley

---

### Galley

- Fully equipped U-shaped galley aft starboard open to the salon
- Large counters
- Double sink
- Electric induction cooktop 2300W 220V BRANDT
- Electric convection oven 1500W 220V DELONGHI
- Front loading 220V fridge located in the galley
- Top loading 220V freezer located in the pantry down in starboard hull
- Water-maker HORIZON reverse osmosis 120l/h 220V; 200 hours
- Fresh water pressure pump

## Electronics

---

- FURUNO FI-50 multifunction display
- 2 x FURUNO GPS GP32
- 2 x FURUNO Navpilot auto pilots
- FURUNO NAVTEX NX 300
- Radar: NAVNET VX2 FURUNO + ARPA function
- FURUNO weather facsimile receiver
- AIS receiver
- VHF COBRA MARINE MR F80
- Marine radio/CD player and speaker
- EPIRB

## Electrical

---

- 220V (with 110V capability) and 24V main electrical system

- Generator: ONAN 7KVA 7000W 220V, 800 hours
- Inverter/charger VICTRON ENERGY 120A - 5000W / 24V - 220V
- Independent dock charger 60A - 24V
- Shore power 110/220V
- Service battery bank 1000 AH, 24V (5 x 200 amps/h)
- 12 x 220V outlets

## Engines 2

---

- 2 x CUMMINS 185HP, 2200 hours APROX 3/2016
- Walk around engine rooms
- Fuel consumption per engine: 1 liter (.26 gallon) per mile at 7.5 knots, 35 liter (9.2 gallons) per mile at 14 knots;
- Fuel tanks integral to each hull with large clear hatches for visual inspection.
- Fuel tanks: 2 x 4,600 liters (1,215 gallons) for a total of 9,200 liters (2,430 gallons)
- Range: approximately 4,500 miles at 7-8 kts
- Propellers: 4 blade fixed bronze; diameter 800 mm; 720 rpm

## Safety Equipment

---

- EPIRP + GPS KANNAD
- EUROVINYL inflatable life raft 4 pax
- Flare kit
- MOB

## Additional information

---

- Hard bottom Dinghy: CARIBE 3.20m
- Outboard engine: 4 stroke HONDA 5hp
- Sea kayak

## Exclusions

---

Owner's personal belongings.

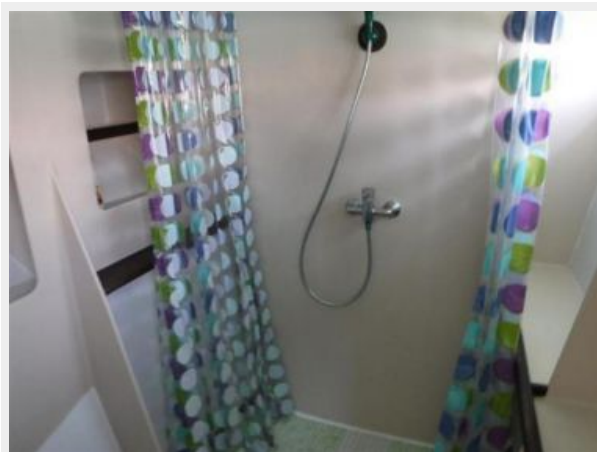
## Disclaimer

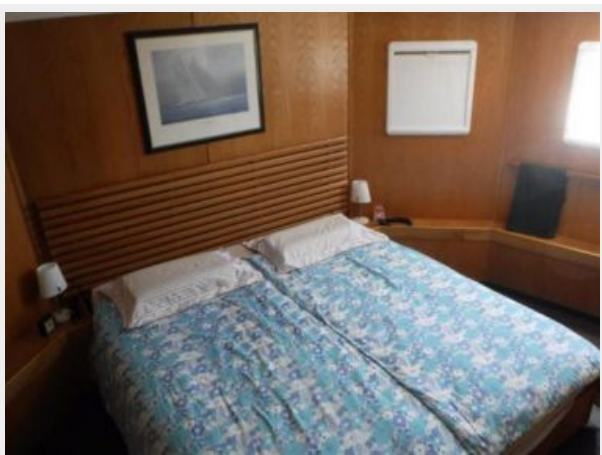
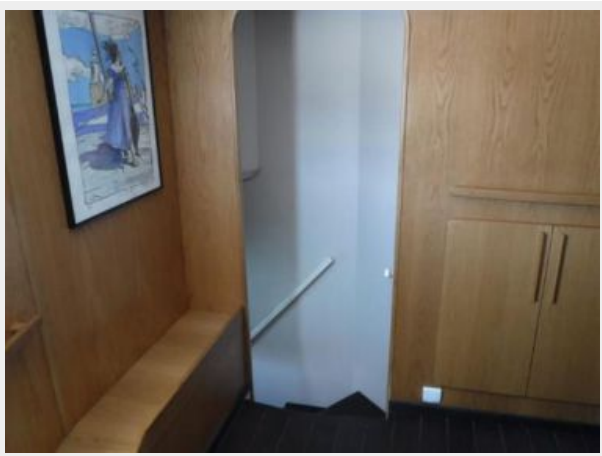
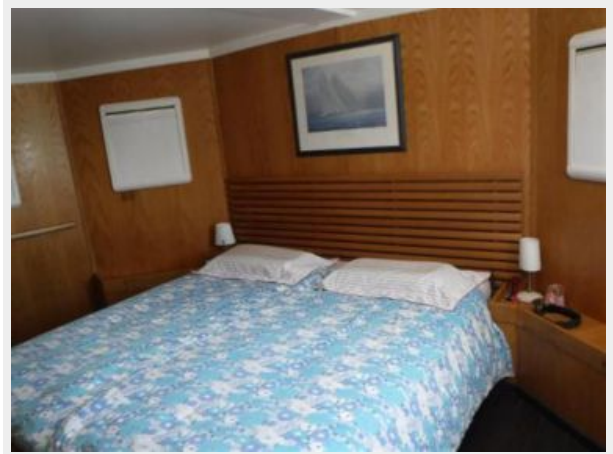
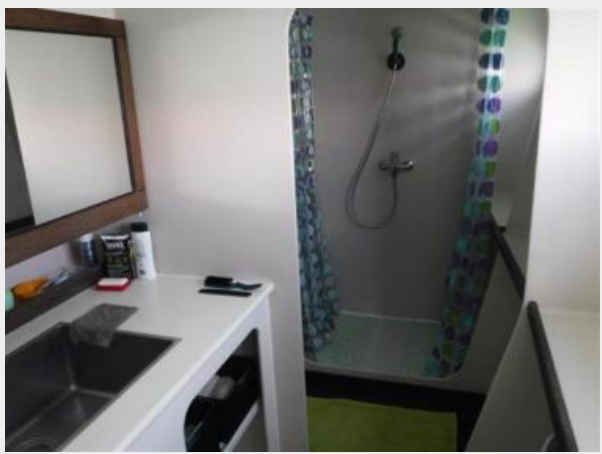
---

The Company offers the details of this vessel or yacht in good faith but cannot guarantee or warrant the accuracy of this information nor warrant the condition of the vessel. A buyer should instruct his representatives, agents, or his surveyors, to investigate such details as the buyer

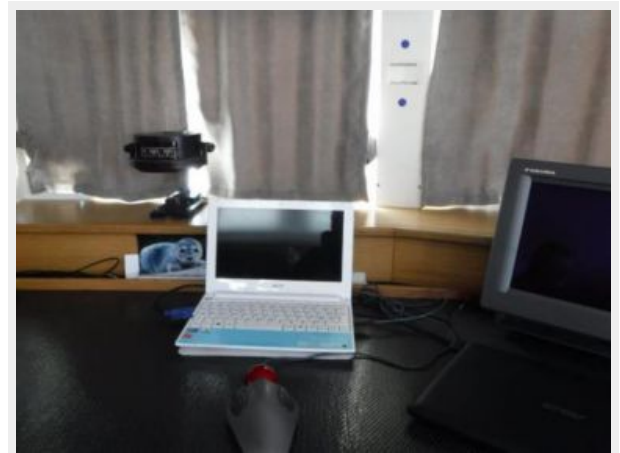
desires validated. This vessel or yacht is offered subject to prior sale, price change, or withdrawal without notice.

# PHOTOS

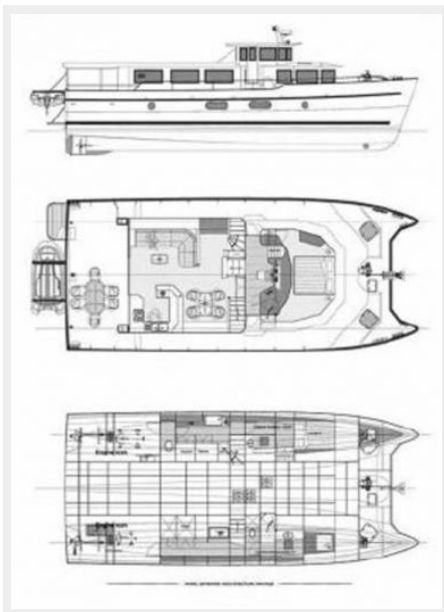




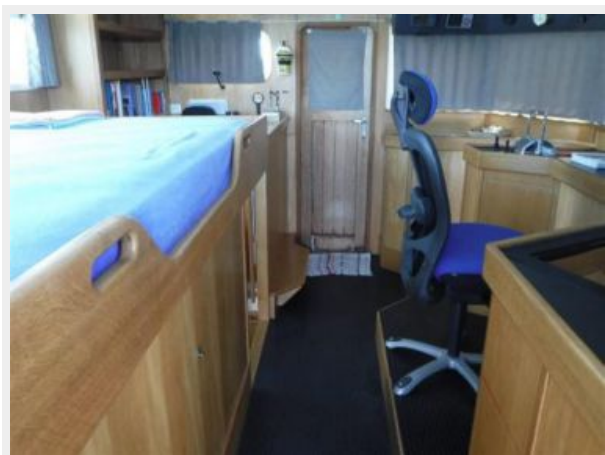
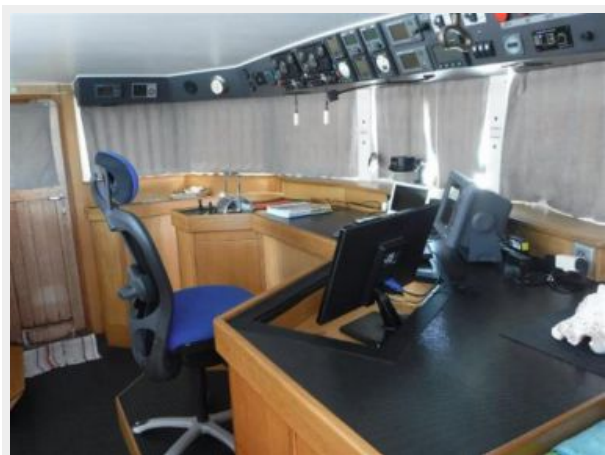


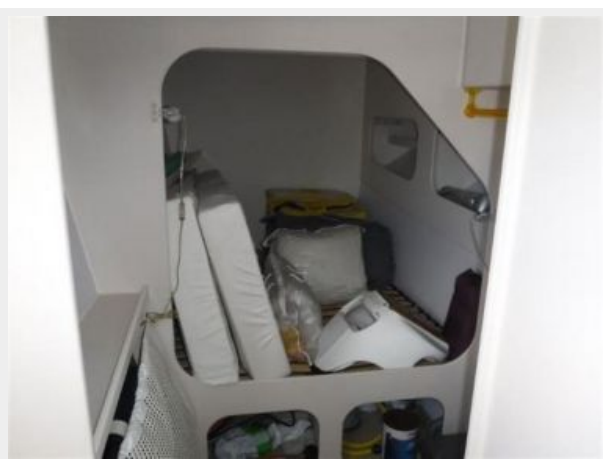








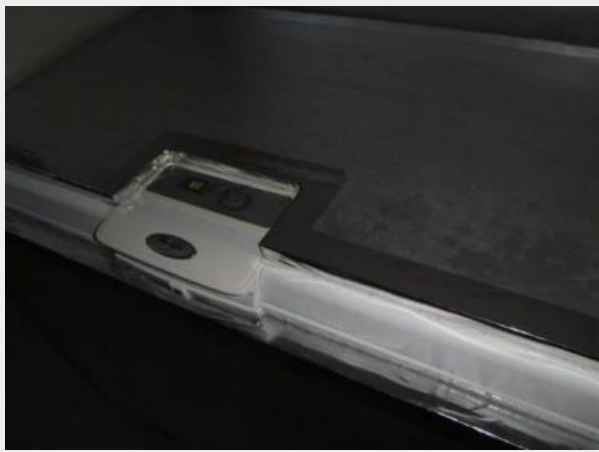






















# CONTACTS

---

Andrey Shestakov, leading yacht broker of the sales department of Shestakov Yacht Sales Inc. Shestakov Yacht Sales Inc., the official representative of the Miami/Fort Lauderdale FL headquarters.

## Contact details

---

Email:  
**andrey@shestakovyachtsales.com**

Web: [shestakovyachtsales.com/en/](http://shestakovyachtsales.com/en/)

## Telephones

---

USA: **+1(954)274-4435**

## Office hours

---

Monday – Saturday: **9:00 - 21:00 EDT**

Sunday: **closed**

## Address

---



Harbour Towne Marina, 850 NE 3rd St,  
STE 213, Dania, FL 33004