

GLAZMOR — FERNAND



Судостроитель: Fernand

Год постройки: 2009

Модель: Катамаран

Цена: **ЦЕНА ЯХТЫ ПО ЗАПРОСУ**

Местонахождение: France

Длина общая: 58' 0" (17.68m)

Ширина: 25' 0" (7.62m)

Макс. осадка: 4' 5" (1.35m)

Крейс. скорость: 8 Kts. (9 MPH)

Макс. скорость: 14 Kts. (16 MPH)

Купить **GLAZMOR — Fernand** а также выбрать подходящую вам яхту из нашего каталога яхт вам поможет опытный яхтенный брокер Андрей Шестаков. На сегодняшний день компания **Shestakov Yacht Sales Inc.** имеет большое количество яхт в собственном списке продаж, а также тесно сотрудничает со всеми крупными яхтенными производителями по всему миру.

Для того чтобы купить яхту **GLAZMOR — Fernand** а также проконсультироваться по любому вопросу связанному с покупкой, продажей, чартером яхт позвоните по телефону **+7(918)465-66-44**.

ОГЛАВЛЕНИЕ

ОГЛАВЛЕНИЕ	2
ХАРАКТЕРИСТИКИ	4
Обзор	4
Основная информация	5
Размеры	5
Скорость, вместимость и масса	5
Размещение	5
Корпус и палуба	6
Информация о двигателе	6
ПОДРОБНОЕ ОПИСАНИЕ	7
GENERAL	7
Dimensions	8
Engines	8
Tankage	8
Accommodations	8
Galley	9
Electronics	9
Electrical	9
Engines 2	10
Safety Equipment	10
Additional information	10
Исключения	10
Отказ от ответственности	10
ФОТОГРАФИИ	12
КОНТАКТЫ	25
Контактная информация	25
Телефоны	25
Время работы	25

Адрес

25

ХАРАКТЕРИСТИКИ

Обзор

GLAZMOR is a true world class transoceanic voyager with a 4,500 mile range and twin 185 HP Cummins diesels that sip fuel or will push the vessel at 14 knots if desired.. Whether you are looking to cruise the Big Loop in comfort or cross the Atlantic to the Mediterranean, this cat will get you there efficiently and safely.

GLAZMOR was specifically designed for long-range cruising by the renowned multihull designer Marc Lombard. With her generous beam of 25 feet and 4 1/2 foot draft she is very comfortable in any seas.

Her owners are experienced world travelers and worked with the designer to build the perfect vessel which can be handled by a couple while extended cruising with simple and reliable systems.

They have traveled extensively with GLAZMOR throughout Europe, France, Scotland, England, Scotland , Ireland and on to Norway. Also the Caribbean Sea, West Indies and the Bahamas and the entire East Coast of the USA.

ON entering GLAZMOR from the generous aft deck the large U-shaped galley is to the starboard side of the huge main salon. Forward of the galley is a large U-shaped dining settee. There is an L-shaped couch on the port side with built in bookshelves. Forward of this area on the port is a convenient open office space. The salon/galley/dinette/office space is approx. 375 square feet with over 7 foot headroom.

There are 10 opening LEWMAR windows ventilate this area with large sliding doors providing access to the aft deck.

The master stateroom is forward and down with 7+ foot headroom, a walk-around island bed and 5 opening LEWMAR hatches. A full en-suite bathroom with electric head and walk-in shower is located in the starboard hull.

The raised pilot house is up and forward of the salon area and above the master cabin. There are multiple windows to provide full 360 degree visibility. There is a queen sized pilot berth in the pilot house and port and starboard doors accessing the side decks and bow.

GLAZMOR'S twin Cummins 185 HP engines sip fuel and Coupled with 32", four-bladed propellers power the vessel to 14 knots if desired

The incredibly designed engine rooms are a marvel of design for the efficiency minded owner. The engines are level at waist height driving a uniquely designed belt driven horizontal shaft that increases efficiency. The engine rooms have sea chests that eliminate the need for excessive through hulls. There is a 30 GPH watermaker also aboard.

The degree of engineering and design that went into GLAZMOR must be seen to be understood. She is completely capable of cruising with out the need of shore ties but her electrical system will accept world wide connections. The fuel tanks are actually the hulls themselves with clear access windows to visual inspect the fuel levels or provide access for cleaning if needed.

GLAZMOR is impeccably clean in all aspects appearing to have just come off the line. This is a must see for anyone with adventure on the mind who wishes to cruise without the normal expenses of world capable vessels and crew. She is absolutely ready to take you anywhere in comfort....and economically.

NOT FOR SALE TO U.S. CITIZENS OR U.S. RESIDENTS IN U.S. WATERS.

Основная информация

Тип судна: Катамаран

Модельный год: 2009

Год постройки: 2009

Страна: France

Размеры

Длина общая: 58' 0" (17.68m)

Длина по ватерлинии: 58' 0" (17.68m)

Длина палубы: 58' 6" (17.83m)

Ширина: 25' 0" (7.62m)

Макс. осадка: 4' 5" (1.35m)

Скорость, вместимость и масса

Крейс. скорость: 8 Kts. (9 MPH)

Макс. скорость: 14 Kts. (16 MPH)

Дальность на макс. скорости: 4500 Kts. **Водоизмещение:** 55115 Pounds

Вместимость воды: 78 Gallons

Вместимость сточного бака: 223 Gallons

Объем топливного бака: 615 Gallons

Размещение

Всего коек: 3

Всего ком. состава: 2

Корпус и палуба

Материал корпуса: Composite

Информация о двигателе

Двигатели: 2

Производитель: Cummins

Модель: 6 Cyl

Тип двигателя: Inboard

Тип топлива: Diesel

ПОДРОБНОЕ ОПИСАНИЕ

GENERAL

GLAZMOR is a true world class transoceanic voyager with a 4,500 mile range and twin 185 HP Cummins diesels that sip fuel or will push the vessel at 14 knots if desired.. Whether you are looking to cruise the Big Loop in comfort or cross the Atlantic to the Mediterranean, this cat will get you there efficiently and safely.

GLAZMOR was specifically designed for long-range cruising by the reknown multihull designer Marc Lombard. With her generous beam of 25 feet and 4 1/2 foot draft she is very comfortable in any seas.

Her owners are experienced world travelers and worked with the designer to build the perfect vessel which can be handled by a couple while extended cruising with simple and reliable systems.

They have traveled extensively with GLAZMOR throughout Europe, France, Scotland, England, Scotland , Ireland and on to Norway. Also the Caribbean Sea, West Indies and the Bahamas and the entire East Coast of the USA.

ON entering GLAZMOR from the generous aft deck the large U-shaped galley is to the starboard side of the huge main salon. Forward of the galley is a large U-shaped dining settee. There is an L-shaped couch on the port side with built in bookshelves. Forward of this area on the port is a convenient open office space. The salon/galley/dinette/office space is approx. 375 square feet with over 7 foot headroom.

There are 10 opening LEWMAR windows ventilate this area with large sliding doors providing access to the aft deck.

The master stateroom is forward and down with 7+ foot headroom, a walk-around island bed and 5 opening LEWMAR hatches. A full en-suite bathroom with electric head and walk-in shower is located in the starboard hull.

The raised pilot house is up and forward of the salon area and above the master cabin. There are multiple windows to provide full 360 degree visibility. There is a queen sized pilot berth in the pilot house and port and starboard doors accessing the side decks and bow.

GLAZMOR'S twin Cummins 185 HP engines sip fuel and Coupled with 32", four-bladed propellers power the vessel to 14 knots if desired

The incredibly designed engine rooms are a marvel of design for the efficiency minded owner. The engines are level at waist height driving a uniquely designed belt driven horizontal shaft that increases efficiency. The engine rooms have sea chests that eliminate the need for excessive through hulls. There is a 30 GPH watermaker also aboard.

The degree of engineering and design that went into GLAZMOR must be seen to be understood. She is completely capable of cruising with out the need of shore ties but her electrical system will accept world wide connections. The fuel tanks are actually the hulls themselves with clear access windows to visual inspect the fuel levels or provide access for cleaning if needed.

GLAZMOR is impeccably clean in all aspects appearing to have just come off the line. This is a must see for anyone with adventure on the mind who wishes to cruise without the normal expenses of world capable vessels and crew. She is absolutely ready to take you anywhere in comfort....and economically.

OR U.S. RESIDENTS IN U.S. WATERS.

Dimensions

DimensionsLOA: 60 ft 0 in Beam: 25 ft 0 in LWL: 58 ft 0 in Maximum Draft: 4' 6" Displacement: 55115 lbs

Engines

EnginesEngine 1: Engine Brand: Cummins Year Built: 2009 Engine Type: Inboard Engine/Fuel Type: Diesel Location: Port Engine Hours: 2150

Engine Power: 185 HP Engine 2: Engine Brand: Cummins Year Built: 2009 Engine Type: Inboard Engine/Fuel Type: Diesel Location: Starboard Engine Hours: 2160 Engine Power: 185 HP

Tankage

TanksFresh Water Tanks: Fiberglass (250 Gallons) Fuel Tanks: Fiberglass (2430 Gallons) Holding Tanks: (449 Gallons)

30 GPH water maker

Accommodations

- Spacious, 375 square foot salon area including dining table, desk area, L-shape sofa and open U-shaped galley
- Raised Pilot House with panoramic view, Full navigation and pilot berth and side doors.
- Owner's cabin forward on main deck with with large island bed, large opening windows and ample storage
- Owner's bathroom with fresh-water electric toilet and walk-in stall shower, separate down the stbd hull forward

- One guest cabin with private bathroom in port hull forward with fresh-water electric toilet and stall shower
- Laundry room with 220V 5.5kg washer dryer amidships in port side hull
- Pantry with refrigerator, freezer and storage amidships in starboard hull
- Central 220V vacuum cleaner that reaches throughout the boat
- Aft cockpit covered by hard top and equipped with side curtains
- Large stand-up engine rooms easily accessible amidships inside the hulls
- Water heater 100l 220V
- 220V low energy & fluorescent light bulbs
- Oak interior finish

Galley

Galley

- Fully equipped U-shaped galley aft starboard open to the salon
- Large counters
- Double sink
- Electric induction cooktop 2300W 220V BRANDT
- Electric convection oven 1500W 220V DELONGHI
- Front loading 220V fridge located in the galley
- Top loading 220V freezer located in the pantry down in starboard hull
- Water-maker HORIZON reverse osmosis 120l/h 220V; 200 hours
- Fresh water pressure pump

Electronics

- FURUNO FI-50 multifunction display
- 2 x FURUNO GPS GP32
- 2 x FURUNO Navpilot auto pilots
- FURUNO NAVTEX NX 300
- Radar: NAVNET VX2 FURUNO + ARPA function
- FURUNO weather facsimile receiver
- AIS receiver
- VHF COBRA MARINE MR F80
- Marine radio/CD player and speaker
- EPIRB

Electrical

- 220V (with 110V capability) and 24V main electrical system

- Generator: ONAN 7KVA 7000W 220V, 800 hours
- Inverter/charger VICTRON ENERGY 120A - 5000W / 24V - 220V
- Independent dock charger 60A - 24V
- Shore power 110/220V
- Service battery bank 1000 AH, 24V (5 x 200 amps/h)
- 12 x 220V outlets

Engines 2

- 2 x CUMMINS 185HP, 2200 hours APROX 3/2016
- Walk around engine rooms
- Fuel consumption per engine: 1 liter (.26 gallon) per mile at 7.5 knots, 35 liter (9.2 gallons) per mile at 14 knots;
- Fuel tanks integral to each hull with large clear hatches for visual inspection.
- Fuel tanks: 2 x 4,600 liters (1,215 gallons) for a total of 9,200 liters (2,430 gallons)
- Range: approximately 4,500 miles at 7-8 kts
- Propellers: 4 blade fixed bronze; diameter 800 mm; 720 rpm

Safety Equipment

- EPIRP + GPS KANNAD
- EUROVINYL inflatable life raft 4 pax
- Flare kit
- MOB

Additional information

- Hard bottom Dinghy: CARIBE 3.20m
- Outboard engine: 4 stroke HONDA 5hp
- Sea kayak

Исключения

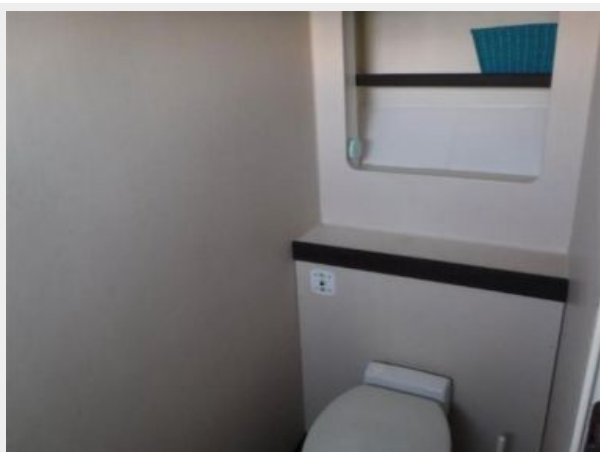
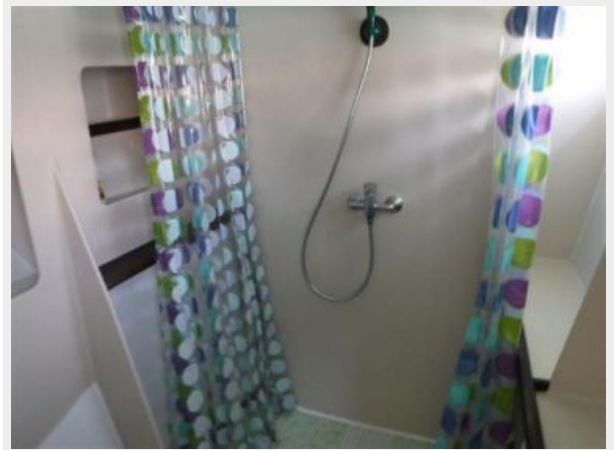
При продаже яхты исключаются личные вещи владельца.

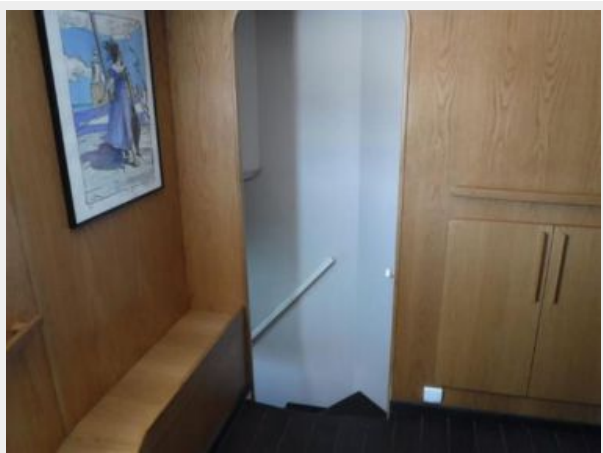
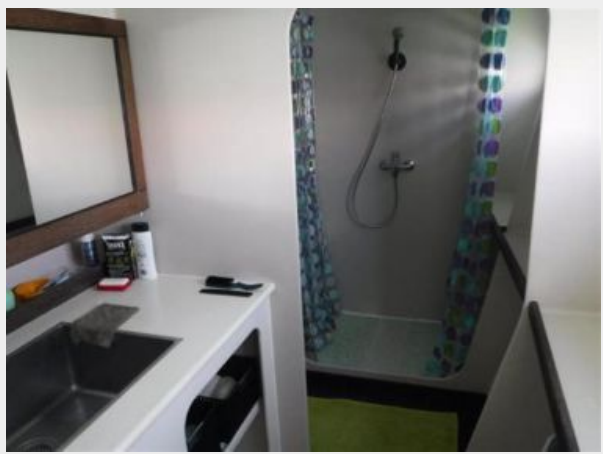
Отказ от ответственности

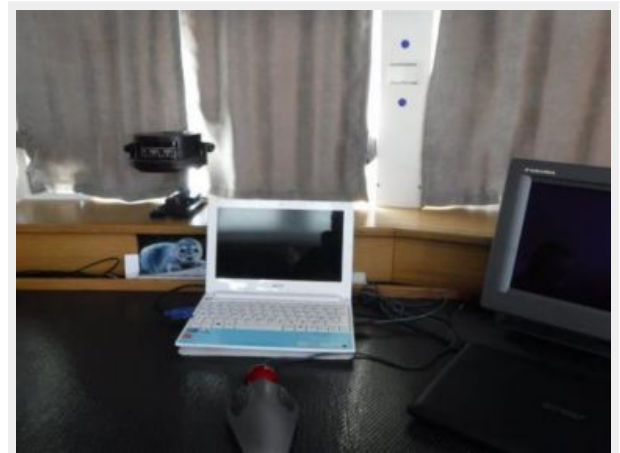
Компания предоставляет описание судна или яхты добросовестно, но не может гарантировать точность этой информации, а также не ручается за техническое состояние. Покупатель должен проинструктировать своих агентов или оценщиков

исследовать представленную информацию более подробно, по собственному желанию. Продажа судна или яхты, изменение цены или снятие с продажи будет происходить без предварительного уведомления.

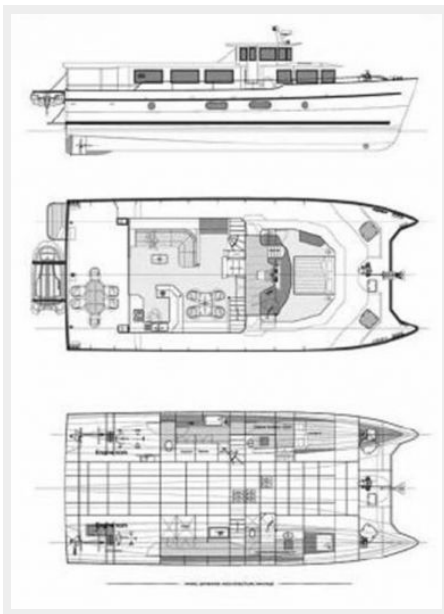
ФОТОГРАФИИ



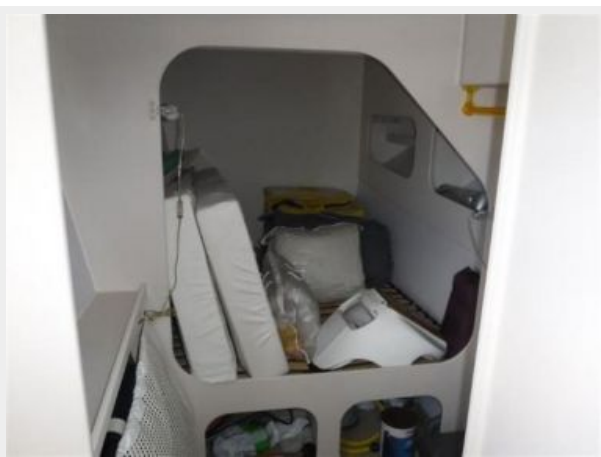






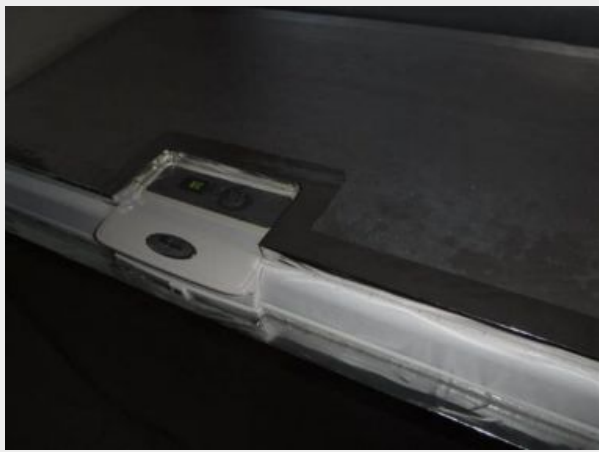


















КОНТАКТЫ

Андрей Шестаков (Andrey Shestakov) – ведущий яхтенный брокер отдела продаж яхт и судов компании Shestakov Yacht Sales Inc. Официальный представитель Shestakov Yacht Sales Inc. для русскоговорящих клиентов в центральном офисе компании в Майами/Форт Лодердейл/Флорида/США.

Контактная информация

Email: andrey@shestakovyachtsales.com

Web: shestakovyachtsales.com

Телефоны

Краснодарский край: **+7(918)465-66-44**

США, Майами, Флорида: **+1(954)274-4435**

Время работы

Понедельник – Суббота: **9:00 - 21:00**
EDT

Воскресенье: **Закрито**

Адрес



Harbour Towne Marina, 850 NE 3rd St,
STE 213, Dania, FL 33004