

## GOLDEN TOUCH II — BROWARD



**Builder:** BROWARD

**Year Built:** 1990

**Model:** Mega Yacht

**Price:** PRICE ON APPLICATION

**Location:** United States

**LOA:** 105' 0" (32.00m)

**Beam:** 20' 0" (6.10m)

**Min Draft:** 6' 5" (1.96m)

**Max Draft:** 6' 0" (1.83m)

**Cruise Speed:** 19 Kts. (22 MPH)

**Max Speed:** 25 Kts. (29 MPH)

Our experienced yacht broker, Andrey Shestakov, will help you choose and buy a yacht that best suits your needs **GOLDEN TOUCH II — BROWARD** from our catalogue. Presently, at Shestakov Yacht Sales Inc., we have a wide variety of yachts available on our sale's list. We also work in close contact with all the big yacht manufacturers from all over the world.

If you would like to buy a yacht **GOLDEN TOUCH II — BROWARD** or would like help answering any questions concerning purchasing, selling or chartering a yacht, please call **+1(954)274-4435**

# TABLE OF CONTENTS

---

TABLE OF CONTENTS	2
SPECIFICATIONS	4
Overview	4
Basic Information	4
Dimensions	4
Speed, Capacities and Weight	4
Accommodations	5
Hull and Deck Information	5
Engine Information	5
PHOTOS	6
PROFILE - Looking at Port Side - Bow On	6
MAIN SALON - Looking Aft	6
"COUNTRY KITCHEN" - Looking forward to Dinette Settee	6
MAIN SALON - Looking Aft to Port	6
COUNTRY KITCHEN - Looking Aft to Galley and Counter	7
COUNTRY KITCHEN - Looking Aft toward Main Salon	7
TWIN GUEST STATEROOM - Looking toward Head - Fold Down Berth to the right	7
AFT DECK - Looking to Starboard at Wet Bar Dining Table and Settee -Foreground	7
MASTER HEAD - Jacuzzi Tub	8
MASTER HEAD - Looking through Jacuzzi from Vanity	8
MASTER HEAD - Close-Up of Jacuzzi	8
MASTER HEAD - L-Shaped Vanity	8
FLYBRIDGE & BOAT DECK - Looking Aft from F/B	8
PILOT HOUSE - Helm Station	8
FLYBRIDGE - Looking to Bow from F/B Helm	9
BOAT DECK - Looking Aft from Mast	9
FLYBRIDGE - Bar w/ Sink, Refrigerator & Storage	9
MAST - Sat Com Dome	9

---

MASTER STATEROOM - Looking toward Master Head	9
MASTER STATEROOM - King-Size Berth & Head Entrance	10
CREWS' QUARTERS - Port Side - Upper and Lower Berths	10
CREWS' QUARTERS - Port Upper and Lower Stateroom	10
CREWS' QUARTERS - Looking fwd to Vee-Berth S/Room	10
EXTERIOR - Port Walkway - Looking Forward	12
CONTACTS	20
Contact details	20
Telephones	20
Office hours	20
Address	20

---

# SPECIFICATIONS

---

## Overview

---

EXTENSIVE REFIT JUST COMPLETED IN...HEADING BACK TO FLL & AVAILABLE TO SHOW

COUNTRY KITCHEN: A TOTAL REDO - Appliances, Quartz Countertop, new Cabinets, Tile Flr

Detroit Diesels- Only 250 Hours SMOH...A/C & Head Systems serviced..Electronics Upgraded

Great Charter Boat with Charter firm ready to book Charters for the 2016-17 Season

DYSID:2949013

## Basic Information

---

**Category:** Mega Yacht

**Model Year:** 1990

**Year Built:** 1990

**Country:** United States

## Dimensions

---

**LOA:** 105' 0" (32.00m)

**LWL:** 93' 3" (28.42m)

**Beam:** 20' 0" (6.10m)

**Min Draft:** 6' 5" (1.96m)

**Max Draft:** 6' 0" (1.83m)

## Speed, Capacities and Weight

---

**Cruise Speed:** 19 Kts. (22 MPH)

**Cruise Speed RPM:** 1750 Kts.

**Max Speed:** 25 Kts. (29 MPH)

**Max Speed RPM:** 2300 Kts.

**Displacement:** 180000 Pounds

**Water Capacity:** 950 Gallons

**Holding Tank:** 480 Gallons

**Fuel Capacity:** 6390 Gallons

---

## Accommodations

---

**Total Cabins:** 3

**Total Berths:** 10

**Total Heads:** 6

---

## Hull and Deck Information

---

**Hull Material:** Aluminum

**Hull Configuration:** Semi-Displacement

---

## Engine Information

---

**Engines:** 2

**Manufacturer:** Detroit Diesel

**Model:** 16-V-92 TA

**Engine Type:** Inboard

**Fuel Type:** Diesel

# PHOTOS

**PROFILE - Looking at Port Side - Bow On**



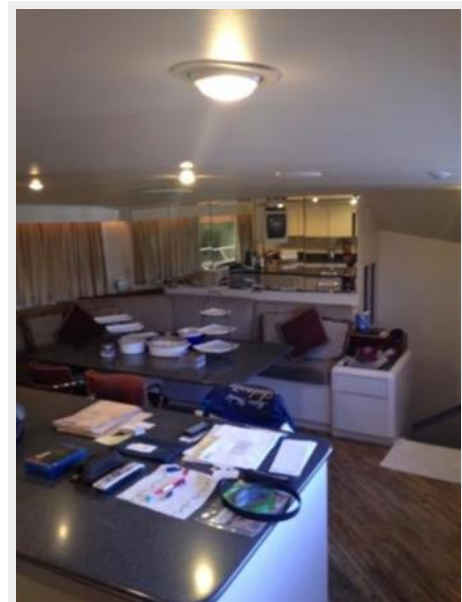
**MAIN SALON - Looking Aft**



**MAIN SALON - Looking Aft to Port**



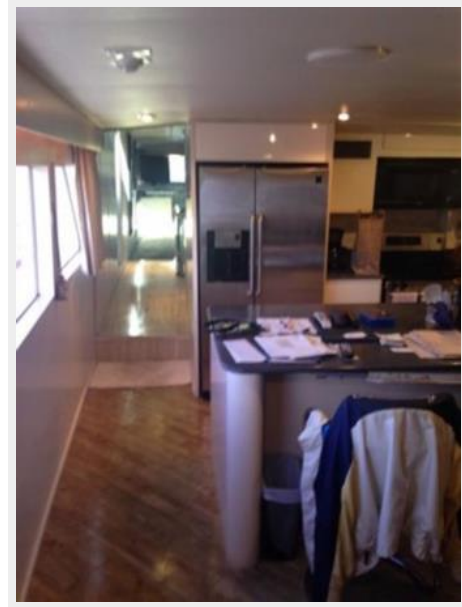
**"COUNTRY KITCHEN" - Looking forward to Dinette Settee**



**COUNTRY KITCHEN - Looking Aft to Galley and Counter**



**COUNTRY KITCHEN - Looking Aft toward Main Salon**



**TWIN GUEST STATEROOM - Looking toward Head - Fold Down Berth to the right**



**AFT DECK - Looking to Starboard at Wet Bar Dining Table and Settee - Foreground**



**MASTER HEAD - Jacuzzi Tub**



**MASTER HEAD - Looking through Jacuzzi from Vanity**



**MASTER HEAD - Close-Up of Jacuzzi**



**MASTER HEAD - L-Shaped Vanity**



**PILOT HOUSE - Helm Station**



**FLYBRIDGE & BOAT DECK - Looking Aft from F/B**





**FLYBRIDGE - Looking to Bow from F/B Helm**



**BOAT DECK - Looking Aft from Mast**



**MAST - Sat Com Dome**



**FLYBRIDGE - Bar w/ Sink, Refrigerator & Storage**



**MASTER STATEROOM - Looking toward Master Head**



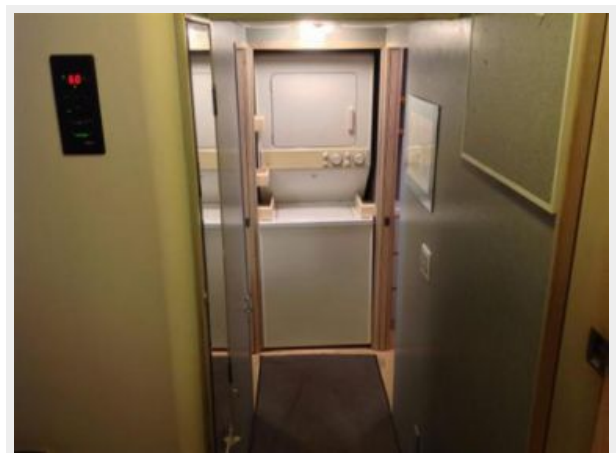
**MASTER STATEROOM - King-Size Berth & CREWS' QUARTERS - Port Side - Upper and Lower Berths**

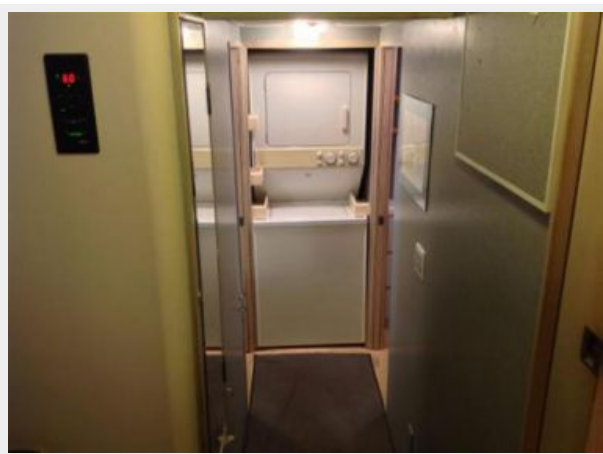
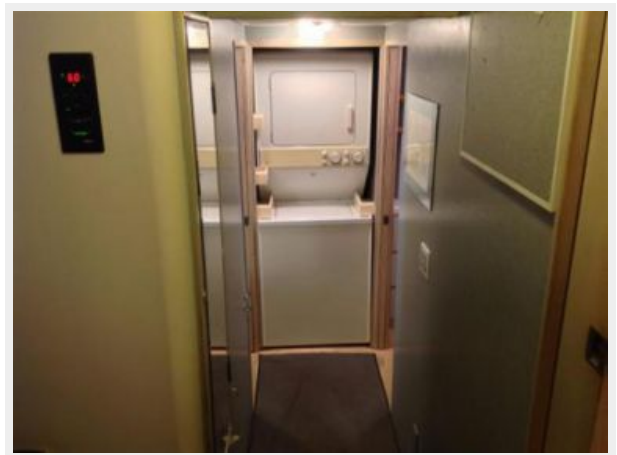


**CREWS' QUARTERS - Port Upper and Lower Stateroom**



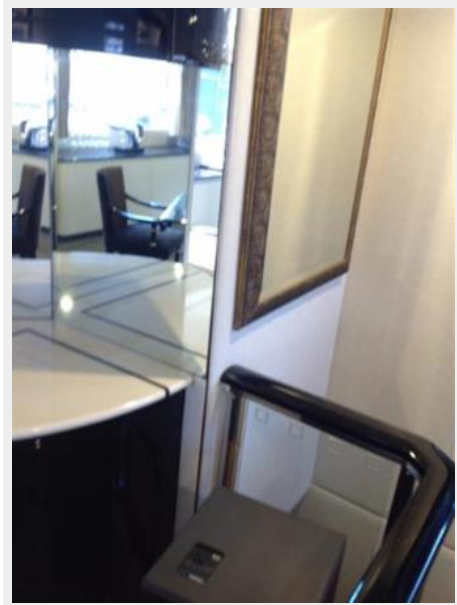
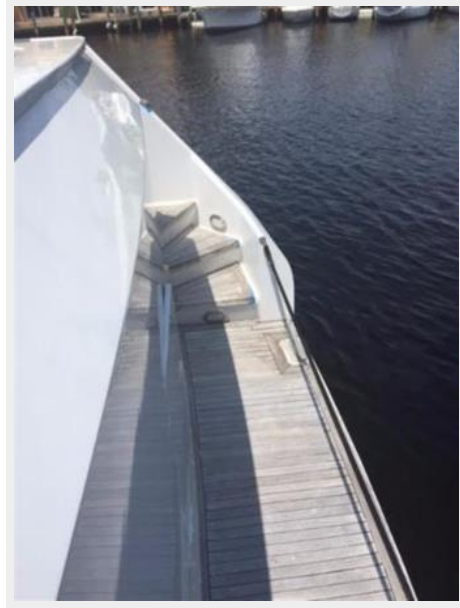
**CREWS' QUARTERS - Looking fwd to Vee-Berth S/Room**

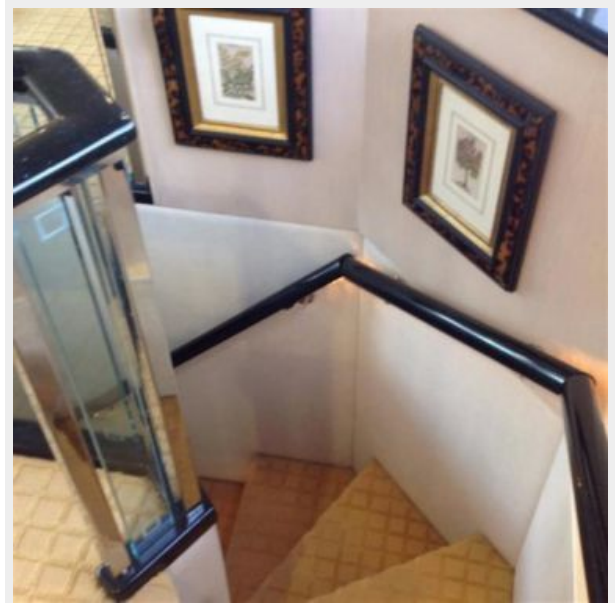
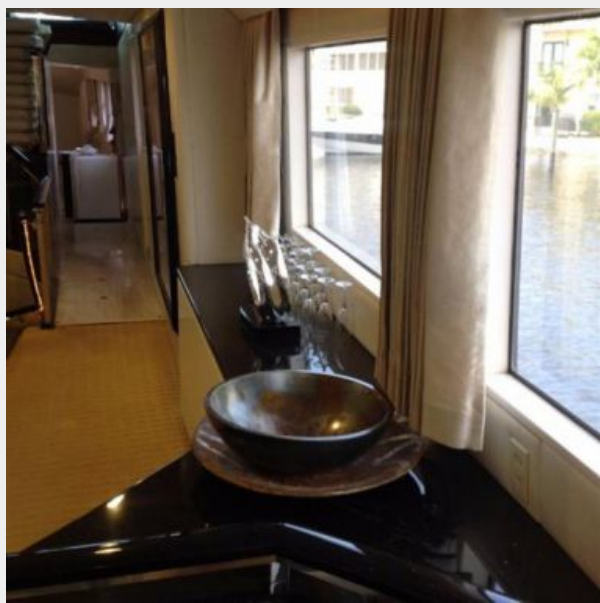


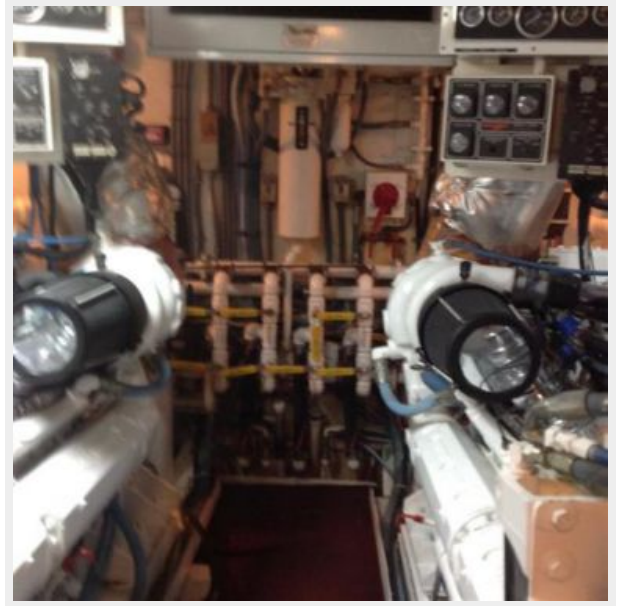
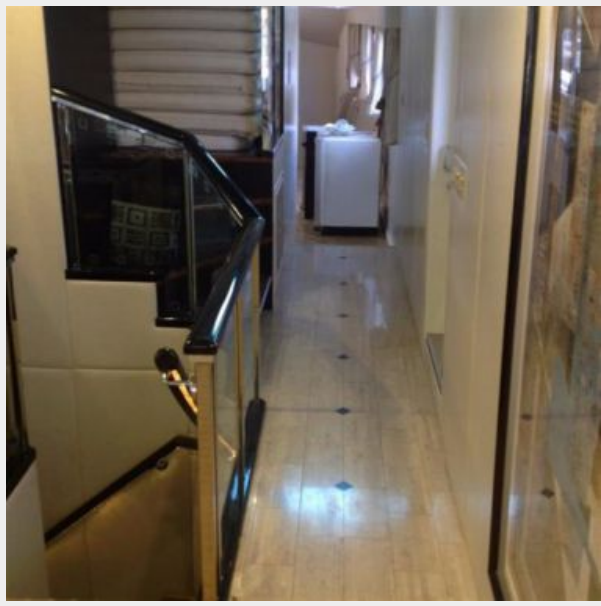


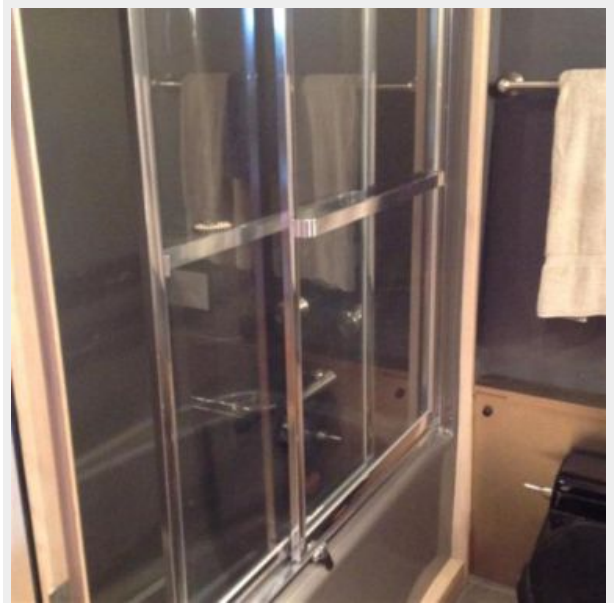
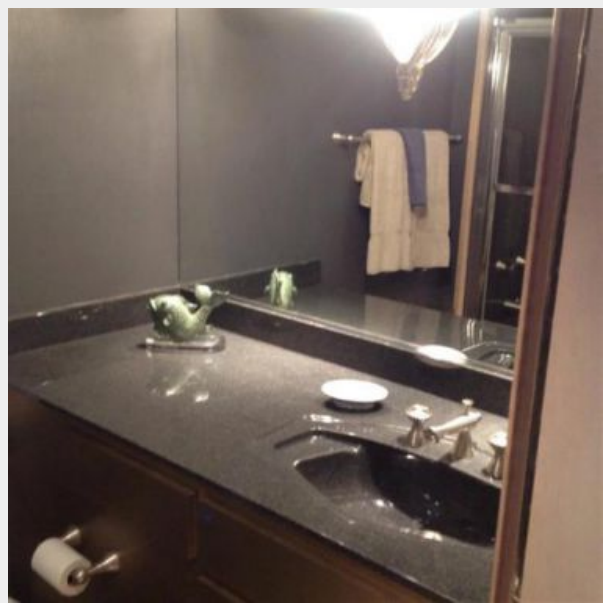
### EXTERIOR - Port Walkway - Looking Forward



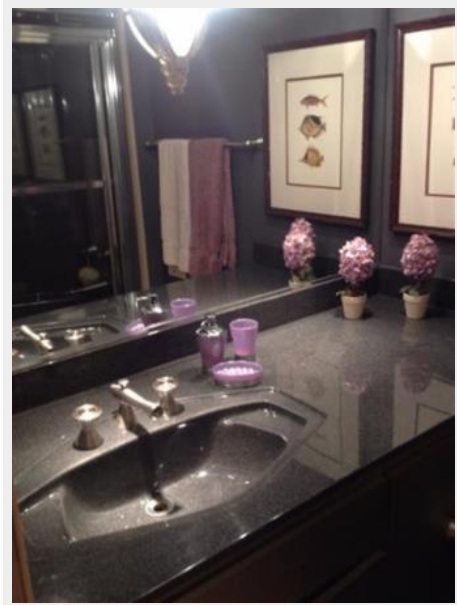


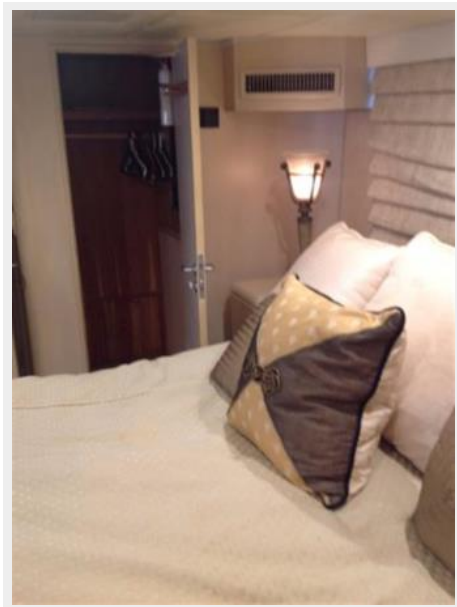


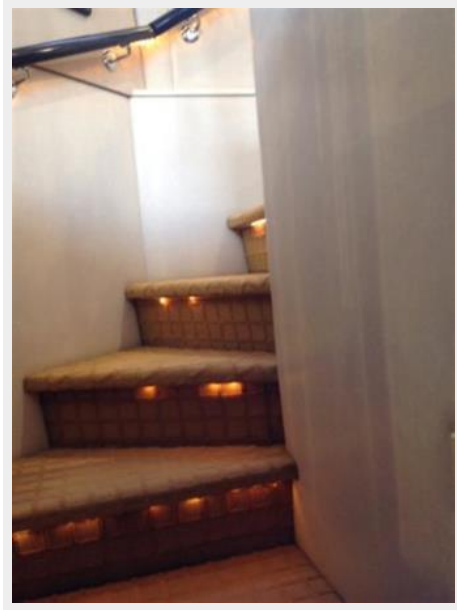












# CONTACTS

---

Andrey Shestakov, leading yacht broker of the sales department of Shestakov Yacht Sales Inc. Shestakov Yacht Sales Inc., the official representative of the Miami/Fort Lauderdale FL headquarters.

## Contact details

---

Email: [andrey@shestakovyachtsales.com](mailto:andrey@shestakovyachtsales.com)

Web: [shestakovyachtsales.com/en/](http://shestakovyachtsales.com/en/)

## Telephones

---

USA: +1(954)274-4435

## Office hours

---

Monday – Saturday: **9:00 - 21:00** EDT

Sunday: **closed**

## Address

---



Harbour Towne Marina, 850 NE 3rd St,  
STE 213, Dania, FL 33004