

40FT 2008 BENETEAU OCEANIS-40 — BENETEAU



Судостроитель: BENETEAU

Год постройки: 2008

Модель: Крейсерская яхта

Цена: ЦЕНА ЯХТЫ ПО ЗАПРОСУ

Местонахождение: United States

Длина общая: 40' 0" (12.19m)

Ширина: 12' 11" (3.94m)

Макс. осадка: 5' 3" (1.60m)

Купить 40ft 2008 Beneteau Oceanis-40 — BENETEAU а также выбрать подходящую вам яхту из нашего каталога яхт вам поможет опытный яхтенный брокер Андрей Шестаков. На сегодняшний день компания Shestakov Yacht Sales Inc. имеет большое количество яхт в собственном списке продаж, а также тесно сотрудничает со всеми крупными яхтенными производителями по всему миру. Для того чтобы купить яхту 40ft 2008 Beneteau Oceanis-40 — BENETEAU а также проконсультироваться по любому вопросу связанному с покупкой, продажей, чартером яхт позвоните по телефону **+7(918)465-66-44**.

ОГЛАВЛЕНИЕ

ОГЛАВЛЕНИЕ	2
ХАРАКТЕРИСТИКИ	4
Обзор	4
Основная информация	4
Размеры	4
Скорость, вместимость и масса	5
Размещение	5
Корпус и палуба	5
Информация о двигателе	5
ПОДРОБНОЕ ОПИСАНИЕ	6
DIMENSIONS	6
ACCOMODATIONS	6
VESSEL WALK THROUGH	7
ELECTRICAL and ELECTRONICS	8
SALON and GALLEY	9
Mechanical	10
Hull & Deck	10
Sails and Rigging	11
Additional	11
COMMENTS	11
EXCLUSIONS:	12
Исключения	12
Отказ от ответственности	12
ФОТОГРАФИИ	13
Dockside - Port side	13
Salon	13
Salon - Dinette	13
Nav station	13

Nav Instruments	13
Galley	13
Aft Head & shower	14
Salon looking aft	14
Forward cabin - with head & Shower	14
Aft cabin (Port side)	14
Aft cabin -2 (port side)	14
Aft Cabin Starbd side	14
Cockpit	15
Cockpit-2	15
Starbd Helm instruments	15
Starbd Helm	15
NEW - GPS - RADAR SYSTEM	15
Port Helm	15
Companionway	16
Passage to swim Platform	16
side deck	16
Cabin top	16
Forward deck	16
dockside Starbd View	16
Engine	17
layout	17
OUT OF WATER	17
КОНТАКТЫ	18
Контактная информация	18
Телефоны	18
Время работы	18
Адрес	18

ХАРАКТЕРИСТИКИ

Обзор

Great Features Include:

3 cabins – 2 Electric Heads w/Showers

Air Conditioning

Full Electronics Package – incl: Autopilot & NEW Chart plotter& Radar System

Euro Style Galley

Expansive Cockpit with Walk-Through Transom

Dual Steering Stations

Shallow Draft

Ready to Go

The Beneteau 40, Cruising World's 2007 Boat of the Year, is a classic in the making! A boat that increases the standards for what one should expect from a 40' boat. It lives like a larger boat, has wonderful sailing attributes, and can easily be managed by one person.

Основная информация

Тип судна: Крейсерская яхта

Подкатегория: Cruising/Racing Sailboat

Модельный год: 2008

Год постройки: 2008

Страна: United States

Размеры

Длина общая: 40' 0" (12.19m)

Длина по ватерлинии: 36' 0" (10.97m)

Ширина: 12' 11" (3.94m)

Макс. осадка: 5' 3" (1.60m)

Скорость, вместимость и масса

Водоизмещение: 16931 Pounds

Вместимость воды: 95 Gallons

Вместимость сточного бака: 22 Gallons

Объем топливного бака: 53 Gallons

Размещение

Всего кают: 3

Всего коек: 3

Всего ком. состава: 2

Корпус и палуба

Материал корпуса: Fiberglass

Информация о двигателе

Двигатели: 1

Производитель: Yanmar

Модель: 3JH4E

Тип двигателя: Inboard

Тип топлива: Diesel

ПОДРОБНОЕ ОПИСАНИЕ

DIMENSIONS

LOA	40 ft	12.17 meters
LWL	36 ft	10.97 m
Beam	12 ft 11 in.....	3.96 m
Draft	5 ft 3 in	1.6 m
Displacement	16,931 lbs	7,680 kg
Ballast	5,500 lbs	2,495 kg
Fuel	53 gal	200 ltr -(molded)
Water	95 gal (in 2 tanks)..	360 ltr (molded)
Holding tank	22 gal	83.3 ltr -Forward
Yanmar Diesel 3JH4E 40 HP (2505 hours)		

Built by Beneteau-USA

ACCOMODATIONS

3 Cabins - 2 Heads w/showers (Jabsco Electric heads)

Sleeps (8) in 3 double cabins plus convertible dinette

Main Cabin – Forward:

Forward Cabin: is accessed by privacy door and also large overhead hatch (for emergency egress). Berth has storage underneath. Additional storage provided by cabinetry and shelving –

- Central double bed with Marine mattress • Hanging locker - Glove box - Cubby hole locker - Storage drawer - Locker storage • 2 Opening hatches with blind / Mosquito net • 2 Hull portholes with curtain

Head - There is a private forward head -to Starbd – fitted with Jabsco electric toilet, shower and wash basin w/storage cabinet. Holding tank behind cabinetry

- Access through forward cabin • Washroom molded in one piece to be watertight • Manual marine toilet • Washbasin - shower mixer tap hot / cold water • 1 Mirror • Toilet accessories:

Glass holder - towel rail - Rubbish bin - Paper dispenser • Cupboard and cubby hole • 1 Opening deck hatch with shutter / Mosquito net

AFT - 2 Symmetrical cabins each one consisting of: • Double bed - Marine mattress • Cupboard - Hanging locker - Closed cubbyholes • 1 Hull portholes with curtain • 1 Porthole(s) opening onto coaming with curtain • 1 Cockpit porthole(s) with curtain • 1 Opening deck hatch with shutter / Mosquito net

Aft berth (starboard). Located aft to the starboard side, this space accommodates a double berth (with tank stored underneath), moreover, battery and battery charger located at the forward end of berth - Private Access to aft head from this cabin.

Aft berth (port). Located aft to the port side; this space accommodates a berth (with tank stored underneath), fan and adequate cabinetry. It also allows access to engine compartment from the starboard side bulkhead.

Aft Head. Located aft of the dining area to the starboard and accessed via a doorway from the salon area and/or the starboard quarter berth. This space accommodates a vanity with washbasin, Jabsco electric toilet, enclosed shower and cabinetry for storage.

- Access through saloon and the starboard aft cabin • Washroom molded in one piece to be watertight • Separate shower - 1 shower mixer tap hot / cold water • 1 Electric marine toilet • 1 Rigid sewage water tank 80L • Wooden handrail(s) - 1 Mixing tap hot water / cold water • 2 Mirrors • Toilet accessories: Glass holder - towel rail - Rubbish bin - Paper dispenser • Cupboard and closed cubbyholes • 1 Porthole opening onto coaming in side window

Interior Cherry finish with Teak & Holly sole

Pressurized H&C Fresh water

Water Heating System: 7 gallon heated by shore power and engine exchanger

Fully air conditioned – 2 zones (dockside power)

VESSEL WALK THROUGH

This vessel is the Euro Style that is becoming very popular in the US because of the larger living space it affords below, and better use of the Galley space

Upon entering the Main Salon – There is Head and shower immediately to Starbd – and two aft guest cabins- One to Starbd, and one to Port. The Starbd guest cabin also has a private door to the aft head, making this an en-suite cabin.

Forward of the Head, on Starbd side is the large Dinette - this easily seats 8 people with the convenient ottoman inboard of the table. This also becomes a very comfortable lounging area with a nice extended lounge seat to the aft part of the seating area – Two people can comfortably

stretch their feet out and read or use this area for any other purpose – this Dinette can also be lowered for 2 additional berths

Moving forward along the Port side is the forward facing Nav station, and then the linear Galley – this layout is very convenient as several people can use the Galley features at the same time, as opposed to the older style U-shaped galley which is very restrictive. This style Galley also affords loads of usable counter space for cooking or entertaining.

Forward of the Salon is the Master en-suite cabin with queen berth and private head and shower.

MACHINERY SPACE

Located aft of the main salon and accessed via a removable hatch in the center of the cabinetry aft of the entrance steps, this contains the main engine, reduction gear, and immediate related auxiliary equipment.

COCKPIT

Located aft on main deck level this is a suitably designed, open molded recessed area with overhead 'Canvas-Top' and Dodger forward. This area is equipped for the purpose of conning the vessel and is provided with a two pedestal steering wheel system, engine controls and gauges, speakers, selected navigation equipment, auto pilot system and sheet winches; moreover, a molded helmsmen bench with storage compartments to access the propane gas locker; additionally conventional molded side benches with center table is fitted forward.

ELECTRICAL and ELECTRONICS

ELECTRICAL:

- VOLTAGE: 12 volt/110 volt
- NO OF BATTERIES: 1 house/1 engine CAPACITY: 92 Ah house 55Ah engine
- MAKE: DEKA AGM 2011
- METHOD OF CHARGING: Alternator and 40 amp Xantrex True Charge battery charger
- 80 amp ALTERNATOR:
- 30 AMP shore power cable

ELECTRONICS:

Nav Station:

Raymarine chart plotter

VHF radio

Stereo – entertainment system

Full electric panels DC and AC

HELM: Dual helm steering

Auto Pilot – Raymarine ST 6002

GPS - Raymarine E-90 Chart Plotter

Radar - Raymarine E-90 Chart Plotter

Raymarine I-70 combo unit

Wind – Raymarine ST60

AIS – Raymarine 350

VHF – Icom ICM412

(2) Plastimo compasses

Entertainment:

TV- 32” RCA flat screen TV with integrated DVD player

Sony CDX-HS70MS stereo w/ MP3 player and speakers

SALON and GALLEY

Main Salon: This is located amidships and aft of the forward v-berth and comprises a lounge/dining area with an upholstered U-shaped settee starboard (storage underneath), a wooden table (center), television, fan, speakers and overhead lighting.

A chart table w/bench seating and ‘Icom IC-M412’ vhf, ‘Sony’ stereo/mp3 player, a.c control panel, and electrical switches/panel mounted into the cabinetry is located just aft of the galley port side.

Galley: The galley area is located immediately to the port in the main salon. This area comprises of a two burner gas ‘Forecio’ stove w/oven, double steel sink, atop load ‘Vitrifrigo’ refrigerator built in to the counter top, along with abundant cabinetry.

Forecio (2) Burner SS stove – Gambled w/ oven – Propane

Vtrifrigo 12v Refrigerator w/freezer

Double SS sink

Numerous storage cabinets

Mechanical

Yanmar Diesel engine MODEL:3JH4E HP: 40 (2505 hrs)

GEAR BOX(S):KANZAKI KM35P

3 Blade fixed prop

Air conditioned – 2 zones w/ reverse cycle heat

Bilge pumps – Automatic electric, plus manual

Par Max fresh water pump

(2) Jabsco Electric heads

Hull & Deck

CONSTRUCTION

HULL: Solid Glass Reinforced Plastic (GRP) It is a one piece molding with internal stiffening provided by transverse frames bulkheads, and longitudinal stringers.

- **DECK MATERIAL:** Textured G.R.P. With teak in cockpit and swim platform, balsa core.
- **STEERING SYSTEM:** Twin wheels at twin helms
- **RUDDER TYPE:** Spade
- **KEEL TYPE:** Fin & bulb
- **HATCHES** These comprise the hatch/companionway providing access to the accommodations space from the cockpit area. Hatches w/screens providing access/light/air to the accommodations space installed in way of the coach roof and foredeck; porthole w/screens openings in way of the coach roof molding sides which provide access/light /air to the accommodation space; and various deck hatch boards and hatchways providing access to the bilge, thru-hull and storage spaces.
- Bowmar water-tight opening hatches and ports

Transom shower (h/c)

SS bow pulpit – SS stern pushpit – SS stanchions and double lifelines

COCKPIT:

Dual helm stations w/ Edson steering

Bimini and dodger

Stern sugar scoop swim platform w/swim ladder

Dinghy Davits

Propane Gas - Two (2) tanks are located in the cockpit storage locker; this compartment is fitted with ventilation for the tanks.

Delta Anchor 45 lb w/ all chain rode

Danforth secondary anchor w/chain & rode

Windlass – Quick 12 v electric

Sails and Rigging

Sloop rig – Z-Spars

Main Sail – Stack Pack System (Quantum sails 2011)

Genoa 140% – on ProFurl roller furling system (Quantum 2010)

Asymmetrical Spinnaker – North Sails Code-3 on Selden GX roller furler (2014)

WINCHES: (2) Lewmar 46 CST – 2 speed primary

(2) Lewmar 40 CST – 2 speed Halyard (on coach roof)

All Lines led aft to cockpit

Standing rigging. This comprises braided stainless steel wire stays of 1 x 19 construction with double backs stays shackled to tensioning turnbuckles of stainless steel construction and stainless steel rods fastened to securing pads through the maindeck structures.

Additional

Bar-B-Que – Stern rail mount Propane

COMMENTS

Similar to her sister ships the Beneteau 40 was designed by naval architects Berret/Racoupeau with the stylizing collaboration of Nauta Design for the interior. In the cockpit, the Beneteau 40 is appointed with two steering stations with navigation instruments nearby for ease of handling. The spacious and luminous interior of the Beneteau 40 is highlighted with rich, light colored select Cherry hardwood and stainless steel to create an essence of warmth and comfort

EXCLUSIONS:

Owner's personal effects

Tender and outboard optional

Исключения

При продаже яхты исключаются личные вещи владельца.

Отказ от ответственности

Компания предоставляет описание судна или яхты добросовестно, но не может гарантировать точность этой информации, а также не ручается за техническое состояние. Покупатель должен проинструктировать своих агентов или оценщиков исследовать представленную информацию более подробно, по собственному желанию. Продажа судна или яхты, изменение цены или снятие с продажи будет происходить без предварительного уведомления.

ФОТОГРАФИИ

Dockside - Port side



Salon



Salon - Dinette



Nav station



Nav Instruments



Galley



Salon looking aft



Aft Head & shower



Forward cabin - with head & Shower



Aft cabin (Port side)



Aft cabin -2 (port side)



Aft Cabin Starbd side



Cockpit



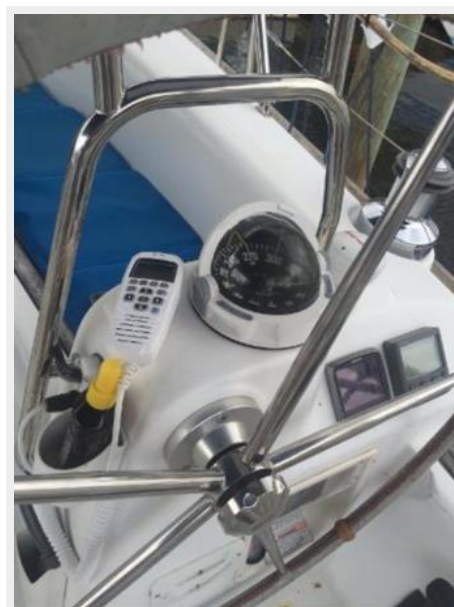
Cockpit-2



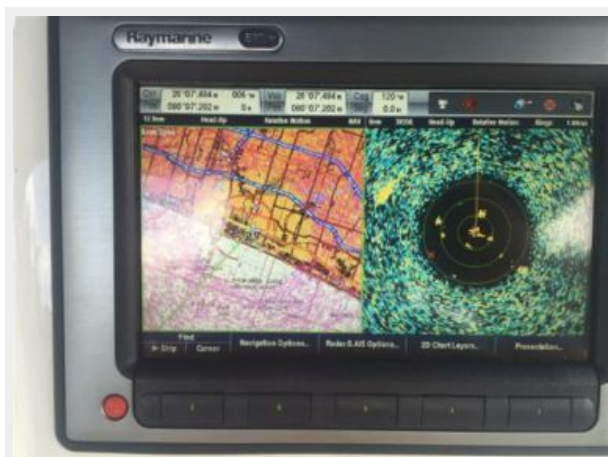
Starbd Helm



Starbd Helm instruments



NEW - GPS - RADAR SYSTEM



Port Helm



Companionway



Passage to swim Platform



side deck



Cabin top



Forward deck



dockside Starbd View



Engine



layout



OUT OF WATER



КОНТАКТЫ

Андрей Шестаков (Andrey Shestakov) – ведущий яхтенный брокер отдела продаж яхт и судов компании Shestakov Yacht Sales Inc. Официальный представитель Shestakov Yacht Sales Inc. для русскоговорящих клиентов в центральном офисе компании в Майами/Форт Лодердейл/Флорида/США.

Контактная информация

Email: andrey@shestakovyachtsales.com

Web: shestakovyachtsales.com

Телефоны

Краснодарский край: **+7(918)465-66-44**

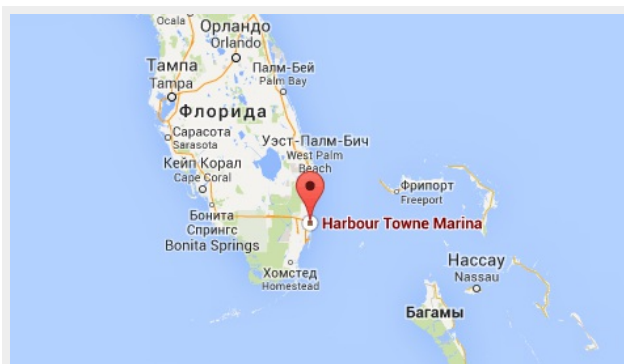
США, Майами, Флорида: **+1(954)274-4435**

Время работы

Понедельник – Суббота: **9:00 - 21:00**
EDT

Воскресенье: **Закрито**

Адрес



Harbour Towne Marina, 850 NE 3rd St,
STE 213, Dania, FL 33004