

## MUTUAL FUN — FERRETTI



**Builder:** FERRETTI

**Year Built:** 1995

**Model:** Motor Yacht

**Price:** PRICE ON APPLICATION

**Location:** United States

**LOA:** 48' 0" (14.63m)

**Beam:** 14' 0" (4.27m)

**Max Draft:** 4' 5" (1.35m)

**Cruise Speed:** 25 Kts. (29 MPH)

**Max Speed:** 28 Kts. (32 MPH)

Our experienced yacht broker, Andrey Shestakov, will help you choose and buy a yacht that best suits your needs **Mutual Fun — FERRETTI** from our catalogue. Presently, at Shestakov Yacht Sales Inc., we have a wide variety of yachts available on our sale's list. We also work in close contact with all the big yacht manufacturers from all over the world.

If you would like to buy a yacht **Mutual Fun — FERRETTI** or would like help answering any questions concerning purchasing, selling or chartering a yacht, please call **+1(954)274-4435**

# TABLE OF CONTENTS

TABLE OF CONTENTS	2
SPECIFICATIONS	6
Overview	6
Basic Information	6
Dimensions	6
Speed, Capacities and Weight	7
Accommodations	7
Hull and Deck Information	7
Engine Information	7
DETAILED INFORMATION	8
Aft Deck	8
Main Salon	8
Galley	8
Lower Helm Station	8
Master Stateroom	9
VIP Stateroom	9
Starboard Guest Stateroom	9
Flybridge	10
Foredeck	10
Deck Equipment	10
Engine Room	10
Remarks	11
Exclusions	11
Exclusions	11
Disclaimer	11
PHOTOS	12
At Night	12
Port Side Profile	12

Port Stern	12
Port Bow	12
Bow	13
Stern	13
Stern	13
Aft Deck	13
Aft Deck	13
Aft Deck Teak	13
Aft Deck Seating	14
Aft Deck Glass Table Settee	14
Aft Deck Glass Table Settee	14
Flybridge Helm	14
Flybridge Seating	14
Flybridge Seating	14
Flybridge	15
Flybridge Electronics	15
Deck Detail	15
Bow Sunpad	15
Anchor Windlass	15
Anchor Locker	15
Deck Detail	16
Salon Opened to the Aft Deck	16
Main Salon	16
Main Salon Port Couch	16
Main Salon Love Seat	16
Main Salon Couch	16
Main Salon Aft	17
Main Salon Starboard	17
Main Salon Starboard	17

Main Salon Couch	17
Salon Entertainment Equipment	17
Galley	17
Galley Storage	18
Galley Storage	18
Lower Helm Station	18
Lower Helm Station Access from Flybridge	18
AC/DC Distribution Panel	18
Lower Helm Station	18
Master Stateroom Forward	19
Master Stateroom Aft	19
Master Stateroom Private Ensuite Head	19
Master Stateroom Closet	19
Master Stateroom Private Ensuite Shower	20
Master Stateroom Private Sink	20
Port Twin Stateroom Aft	20
Port Twin Stateroom Forward	20
Port Twin Stateroom Ensuite Head and Shower	21
Port Twin Stateroom Closet	21
Starboard Stateroom	21
Starboard Stateroom	21
Guest Stateroom Companion Teak and Holly Floor	22
Starboard Stateroom Closet	22
New Carpet	22
Engine Room	22
Starboard CAT 3208	23
Port CAT 3208	23
Engine Room Forward	23
8kw Kohler Generator and Air Conditioning	23

---

Running Gear Reconditioned	23
Port Bottom Job	23
Trim Tabs	24
Hull Zincs	24
Starboard Bottom Job	24
Port Bottom Job	24
Starboard Bottom Job	24
Port Bottom Job	24
Bow Bottom Job	25
Lower Deck Layout	25
CONTACTS	26
Contact details	26
Telephones	26
Office hours	26
Address	26

---

# SPECIFICATIONS

---

## Overview

---

Don't miss this opportunity to buy this RARE 48' 135 Ferretti. Unmistakably Ferretti created a work of art with the 48'. Her striking lines illustrate perfect harmony and practical function. Unrivalled attention to detail and extremely well designed living solutions provides the utmost in yachting tradition, safety and relaxation.

Unrivalled in this size range, Ferretti has created the most amazing 3 stateroom layout with 2 full heads that can comfortably accommodate 6 guests. A fully furnished galley equipped to provide all the comforts of home. Excellent performance with speeds up to 27 knots powered by very reliable 435hp CAT 3208's! If you are in the market for a rare 48 Ferretti with an incredible layout, Don't Let This Slip By! She is easy to see 7 days a week. Schedule your appointment today.

**KEY FEATURES TO CONSIDER:FULLY SERVICED!! FRESH BOTTOM JOB!! RECONDITIONED RUNNING GEAR!!PROP SPEED ON RUNNING GEAR!! 3 STATEROOM LAYOUT!!NEW INTERIOR CARPET!! NEW LED LIGHTING!!COMPLETE EXTERIOR COMPOUND AND WAX!! MOTIVATED SELLER!!**

## Basic Information

---

**Category:** Motor Yacht

**Sub Category:** Flybridge

**Model Year:** 1995

**Year Built:** 1995

**Country:** United States

## Dimensions

---

**LOA:** 48' 0" (14.63m)

**Beam:** 14' 0" (4.27m)

**Max Draft:** 4' 5" (1.35m)

**MFG Length:** 48' 7" (14.81m)

---

## Speed, Capacities and Weight

---

**Cruise Speed:** 25 Kts. (29 MPH)

**Max Speed:** 28 Kts. (32 MPH)

**Displacement:** 76734 Pounds

**Water Capacity:** 172 Gallons

**Fuel Capacity:** 499 Gallons

---

## Accommodations

---

**Total Cabins:** 3

**Total Berths:** 4

**Total Heads:** 2

---

## Hull and Deck Information

---

**Hull Material:** Fiberglass

---

## Engine Information

---

**Engines:** 2

**Manufacturer:** Caterpillar

**Model:** 3208

**Engine Type:** Inboard

**Fuel Type:** Diesel

---

## DETAILED INFORMATION

---

### Aft Deck

---

Boarding from Aft Deck you are greeted with a perfect setting in which to enjoy moments of relaxing conversation against the ever-changing backdrop of the sea. This open Mediterranean style aft deck is a magnificent lounge and alfresco dining location. A built in centerline settee and removable glass table can easily accommodate 6 guests. A large door and hinged window opens the the aft deck to the salon and the combination creates an expansive entertaining area!

### Main Salon

---

The salon on this Ferretti is the perfect vantage point to enjoy the vista. This exclusive living space is sure to satisfy your every need while on board. Along the port side is a built in couch with a love seat directly across.

- High gloss Cherry interior
- Cruiseair controls
- New custom carpeting
- New LED overhead lighting
- AM/FM CD player with disc changer
- High gloss Cherry coffee table

### Galley

---

Forward of the salon on the starboard side is the Galley. A perfect nook that can accommodate 6 guests comfortably while onboard. All the comforts of home within the luxury of a Ferretti.

- Microwave oven
- Glass range
- Refrigerator
- Granite counter-tops and teak and holly wood floors
- Storage for china, glassware, silverware

### Lower Helm Station

---

Easy access from the main salon or ladder from the Flybridge is the Lower Helm Station. The helm station is perfectly situated providing great visibility and comfort while underway. Everything you need to take you safely to your next destination is here.

- Furuno Radar 24 miles



- Garmin 2010C Chartplotter
- Raymarine Depth
- Raymarine St7000 Autopilot
- CAT - engine gauges
- Autohelm Speed Guage
- Autohelm Rudder Indicator
- Morse Cable Engine Controls
- Uniden VHF radio
- Compass
- Shipmate phone intercom system

---

## Master Stateroom

---

Located all the forward the impressive owners suite features a centerline queen berth. High gloss cherry paneling with 2 large closets on either side. Plenty of drawer space located on both the port and starboard sides and underneath the bed. The Private Ensuite Head is accessed from the starboard side.

- Queen Berth with storage underneath
- Cherry cabinetry
- Storage throughout cabin
- Flat screen TV
- A/C control

---

## VIP Stateroom

---

The VIP Stateroom is located on the starboard side and has two twin berths. Ample storage with drawers under the berths and a single large closet. The VIP has private access to an ensuite head.

- Cherry cabinetry throughout
- Twin berths
- Full size closet with shelving
- Drawers
- Esuite head
- A/C controls

---

## Starboard Guest Stateroom

---

Accessed through the guest companion way. This comfortable stateroom has a single double berth. Equipped with large built-in drawer storage and a single closet.

- Double berth
- Cherry cabinetry throughout
- Under bed drawers
- Hanging closet with shelves
- A/C controls

---

## Flybridge

---

The flybridge of the yacht is the perfect place to take the sun and sea. The helm station is laid out clearly and intuitively with all the necessary electronics and instruments to offer the maximum comfort while underway. There is an oasis of cushions to comfortably lounge on and enjoy your life at sea in total relaxation.

- Custom arch
- Helm Station with electronics
- Built in seating
- Access to the lower helm station
- Access to the aft deck
- Full flybridge retractable bimini
- Liferaft

---

## Foredeck

---

Access to the foredeck is easy from either the starboard or port side forward door. This is a lovely lounge area for guests with sun pad on the bow to take in the sun or stars. Also good get away for privacy and relaxation, especially while at anchor.

---

## Deck Equipment

---

Walk around decks and a large bow section makes moving around the decks a breeze.

- Stainless steel sliding glass door to main salon
- Aft Deck settee
- Teak decking
- Loran windlass
- Remote forward anchor and winch controls
- Life Jackets
- Lines and fenders

---

## Engine Room

---

---

Easy access to the engine room made via a hatch in the aft deck.

- Twin CAT 3208 - 435 HP
- Reconditioned running gear
- New Seafire Automatic Fire Supression System
- 8 Kw Kohler Genset - 4500 appx hours
- ZF V Drive transmissions
- ZF Engine Couplers Replaced
- Outside entry to engine room
- Engine room exhaust fan
- Sea Strainers
- Cruiseair Airconditioning
- NEW - Fireboy MA-2 Engine Room suppression system
- Trim tabs
- DC Battery banks
- Battery Charger
- Fuel tanks - 3
- Hot water heater

## Remarks

---

Don't miss this rare 48' 135 Ferretti, just serviced and ready for a new owner. If you are in the market for a flybridge motor yacht with the absolute best layout in this size range, excellent performance and reliability, this 48' Ferretti is a must see! Easy to show 7 days a week. Schedule your appointment today!

## Exclusions

---

Owners Personal Effects. A list will be provided upon request.

## Exclusions

---

Owner's personal belongings.

## Disclaimer

---

The Company offers the details of this vessel or yacht in good faith but cannot guarantee or warrant the accuracy of this information nor warrant the condition of the vessel. A buyer should instruct his representatives, agents, or his surveyors, to investigate such details as the buyer desires validated. This vessel or yacht is offered subject to prior sale, price change, or withdrawal without notice.

# PHOTOS

**At Night**



**Port Side Profile**



**Port Stern**



**Port Bow**



**Bow**



**Stern**



**Stern**



**Aft Deck**



**Aft Deck**



**Aft Deck Teak**



**Aft Deck Seating**



**Aft Deck Glass Table Settee**



**Aft Deck Glass Table Settee**



**Flybridge Helm**



**Flybridge Seating**



**Flybridge Seating**



**Flybridge**



**Flybridge Electronics**



**Deck Detail**



**Bow Sunpad**



**Anchor Windlass**



**Anchor Locker**



**Deck Detail**



**Salon Opened to the Aft Deck**



**Main Salon**



**Main Salon Port Couch**



**Main Salon Love Seat**



**Main Salon Couch**





**Main Salon Aft**



**Main Salon Starboard**



**Main Salon Starboard**



**Main Salon Couch**



**Salon Entertainment Equipment**



**Galley**



**Galley Storage**



**Galley Storage**



**Lower Helm Station**



**Lower Helm Station Access from Flybridge**



**AC/DC Distribution Panel**



**Lower Helm Station**



**Master Stateroom Forward**



**Master Stateroom Aft**



**Master Stateroom Private Ensuite Head**

**Master Stateroom Closet**



### Master Stateroom Private Ensuite Shower



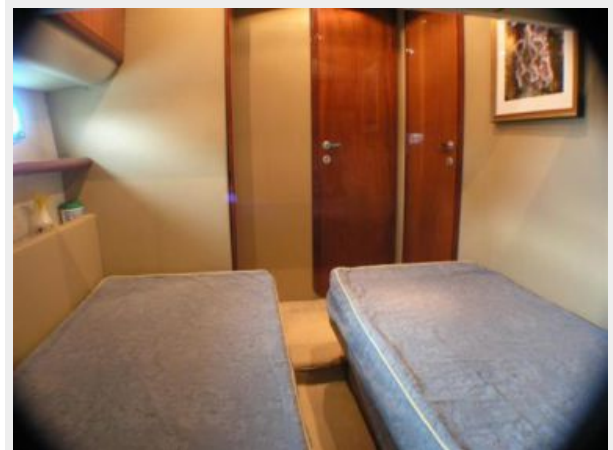
### Master Stateroom Private Sink



### Port Twin Stateroom Aft



### Port Twin Stateroom Forward



**Port Twin Stateroom Closet**



**Port Twin Stateroom Ensuite Head and Shower**



**Starboard Stateroom**



**Starboard Stateroom**



## Guest Stateroom Companion Teak and Holly Floor

### Starboard Stateroom Closet



### New Carpet



### Engine Room



**Starboard CAT 3208**



**Port CAT 3208**



**Engine Room Forward**



**8kw Kohler Generator and Air Conditioning**



**Running Gear Reconditioned**



**Port Bottom Job**



**Trim Tabs**



**Hull Zincs**



**Starboard Bottom Job**



**Port Bottom Job**



**Starboard Bottom Job**



**Port Bottom Job**

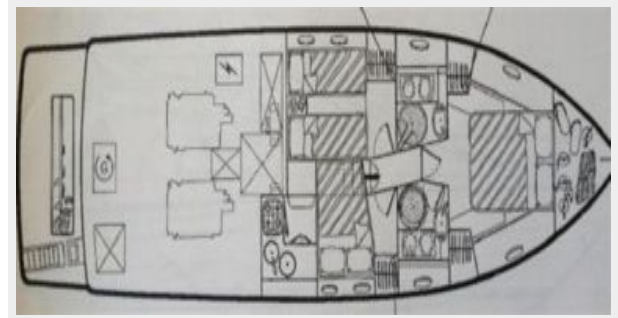




### Bow Bottom Job



### Lower Deck Layout



# CONTACTS

---

Andrey Shestakov, leading yacht broker of the sales department of Shestakov Yacht Sales Inc. Shestakov Yacht Sales Inc., the official representative of the Miami/Fort Lauderdale FL headquarters.

## Contact details

---

Email: [andrey@shestakovyachtsales.com](mailto:andrey@shestakovyachtsales.com)

Web: [shestakovyachtsales.com/en/](http://shestakovyachtsales.com/en/)

## Telephones

---

USA: +1(954)274-4435

## Office hours

---

Monday – Saturday: **9:00 - 21:00** EDT

Sunday: **closed**

## Address

---



Harbour Towne Marina, 850 NE 3rd St,  
STE 213, Dania, FL 33004