

## SILVER TONGUE II — HATTERAS



**Builder:** HATTERAS

**Year Built:** 1983

**Model:** Motor Yacht

**Price:** PRICE ON APPLICATION

**Location:** United States

**LOA:** 56' 4" (17.17m)

**Beam:** 18' 2" (5.54m)

**Max Draft:** 4' 1" (1.24m)

**Cruise Speed:** 15 Kts. (17 MPH)

**Max Speed:** 18 Kts. (21 MPH)

Our experienced yacht broker, Andrey Shestakov, will help you choose and buy a yacht that best suits your needs **SILVER TONGUE II — HATTERAS** from our catalogue. Presently, at Shestakov Yacht Sales Inc., we have a wide variety of yachts available on our sale's list. We also work in close contact with all the big yacht manufacturers from all over the world.

If you would like to buy a yacht **SILVER TONGUE II — HATTERAS** or would like help answering any questions concerning purchasing, selling or chartering a yacht, please call **+1(954)274-4435**

---

# TABLE OF CONTENTS

---

TABLE OF CONTENTS	2
SPECIFICATIONS	3
Basic Information	3
Dimensions	3
Speed, Capacities and Weight	3
Accommodations	3
Hull and Deck Information	3
Engine Information	3
DETAILED INFORMATION	4
Overview	4
Electronics & Navigation	4
Electrical Equipment	4
Deck Equipment	4
Mechanical	4
Galley	5
Disclaimer	5
Exclusions	5
Disclaimer	5
PHOTOS	6
CONTACTS	11
Contact details	11
Telephones	11
Office hours	11
Address	11

---

# SPECIFICATIONS

---

## Basic Information

---

**Category:** Motor Yacht

**Sub Category:** Aft Cabin

**Model Year:** 1983

**Year Built:** 1983

**Country:** United States

**Fly Bridge:** Yes

## Dimensions

---

**LOA:** 56' 4" (17.17m)

**Beam:** 18' 2" (5.54m)

**Max Draft:** 4' 1" (1.24m)

## Speed, Capacities and Weight

---

**Cruise Speed:** 15 Kts. (17 MPH)

**Max Speed:** 18 Kts. (21 MPH)

## Accommodations

---

**Total Cabins:** 3

## Hull and Deck Information

---

**Hull Material:** Fiberglass

## Engine Information

---

**Engines:** 2

**Manufacturer:** Detroit Diesel

**Model:** 8V92TI

**Engine Type:** Inboard

**Fuel Type:** Diesel

---

# DETAILED INFORMATION

---

## Overview

---

Standard Hatteras 56 layout that accommodates 6 people in 3 staterooms. Exceptions are: Master Stateroom has a built-in vanity with lights and mirrors and drawers aft to starboard. Aft deck has a custom staircase to upper bridge deck, in addition to ladder at lower helm. The bridge deck features a U-shaped seating area with hi/lo table. Wet bar aft of helm includes sink and U-Line Refrigerator/Ice maker. Aft is a 1983 13' Boston Whaler with outboard tender and a Marquipt davit. SILVER TONGUE II is a very original 56 Hatteras Motoryacht with few cosmetic changes found in many re-done models.

## Electronics & Navigation

---

**LOWER STATION:** Northstar 94iX Furuno LC-90 Furuno GP-70 Data Marine speed & depth indicators Robertson Auto-Pilot Furuno Radar Standard Horizon VHF Ray 400 Hailer **UPPER STATION:** Datamarine speed & depth indicator Robertson Auto-pilot

## Electrical Equipment

---

20 KW Onan genset w/1682 hours 21 KW Tropical Diesel electric genset 32V Sentry automatic battery charger 12V Professional Mariner auto battery charger 2500 watt Heart inverter 240/120 AC shore power

## Deck Equipment

---

Ideal electric windlass w/chain & line rode with Suncor 45 lb. stainless steel anchor. Spare Danforth anchor with chain & rope rode Two F/G deck boxes on bow Marquipt 4-step boarding ladder Two Marquipt double fender racks on bow Spare Danforth Anchor Two Marquipt sea stairs Teak handrails with covers Isinglass enclosure across aft deck (2015) Swim platform w/boarding ladder Rayline remote spotlight Bimini top to radar arch & then aft over seating area 2 flybridge cushioned helm seats 13' 1983 Boston Whaler with 1992 40 hp Johnson outboard & cover Covers for front deck bench seat, flybridge helm console, u-shaped seat are all new (2015).

## Mechanical

---

Detroit Diesel 8V92TI (625 hp ea.) Cruiseair reverse cycle A/C Hot water heater Fire suppression system Airseps Spare props Village Marine water maker Wilcox Seabrace stabilizers Air compressor Glendinning engine synchronize ACR 406 EPIRB

---

## Galley

---

Modernmaid 4 burner electric stove w/oven GE Microwave Oven Stainless steel full size side by side refrigerator w/ice maker and water dispenser. Single stainless steel sink Kitchen Aid trash compactor Black & Decker toaster oven Bosch dishwasher Aft deck chest freezer Aft deck Scotsman Refrigerator & Ice maker Separate Bosch Washer & dryer

---

## Disclaimer

---

The Company offers the details of this vessel in good faith but cannot guarantee or warrant the accuracy of this information nor warrant the condition of the vessel. A buyer should instruct his agents, or his surveyors, to investigate such details as the buyer desires validated. This vessel is offered subject to prior sale, price change, or withdrawal without notice.

---

## Exclusions

---

Owner's personal belongings.

---

## Disclaimer

---

The Company offers the details of this vessel or yacht in good faith but cannot guarantee or warrant the accuracy of this information nor warrant the condition of the vessel. A buyer should instruct his representatives, agents, or his surveyors, to investigate such details as the buyer desires validated. This vessel or yacht is offered subject to prior sale, price change, or withdrawal without notice.

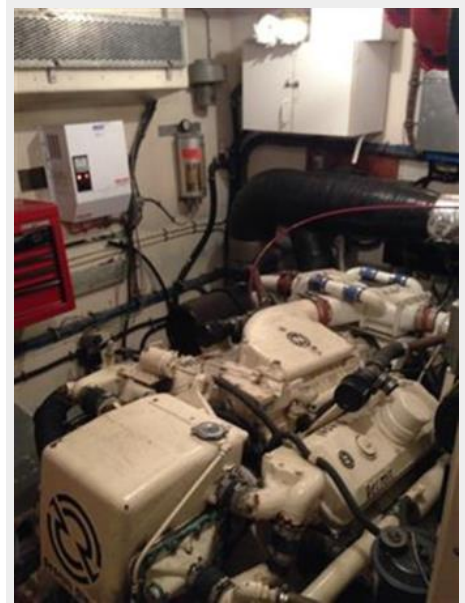
# PHOTOS













---

# CONTACTS

---

Andrey Shestakov, leading yacht broker of the sales department of Shestakov Yacht Sales Inc. Shestakov Yacht Sales Inc., the official representative of the Miami/Fort Lauderdale FL headquarters.

---

## Contact details

---

Email: **andrey@shestakovyachtsales.com**

Web: [shestakovyachtsales.com/en/](http://shestakovyachtsales.com/en/)

---

## Telephones

---

USA: +1(954)274-4435

---

## Office hours

---

Monday – Saturday: **9:00 - 21:00** EDT

Sunday: **closed**

---

## Address

---



Harbour Towne Marina, 850 NE 3rd St,  
STE 213, Dania, FL 33004