

CALLIOPE — MARINE TRADER



Builder: MARINE TRADER

Year Built: 1981

Model: Trawler

Price: PRICE ON APPLICATION

Location: United States

LOA: 50' 0" (15.24m)

Beam: 15' 6" (4.72m)

Min Draft: 4' 7" (1.40m)

Max Draft: 4' 7" (1.40m)

Cruise Speed: 7 Kts. (8 MPH)

Max Speed: 9 Kts. (10 MPH)

Our experienced yacht broker, Andrey Shestakov, will help you choose and buy a yacht that best suits your needs **Calliope — MARINE TRADER** from our catalogue. Presently, at Shestakov Yacht Sales Inc., we have a wide variety of yachts available on our sale's list. We also work in close contact with all the big yacht manufacturers from all over the world.

If you would like to buy a yacht **Calliope — MARINE TRADER** or would like help answering any questions concerning purchasing, selling or chartering a yacht, please call **+1(954)274-4435**

TABLE OF CONTENTS

TABLE OF CONTENTS	2
SPECIFICATIONS	6
Overview	6
Basic Information	6
Dimensions	6
Speed, Capacities and Weight	6
Accommodations	7
Hull and Deck Information	7
Engine Information	7
DETAILED INFORMATION	8
50' Marine Trader Vessel Walkthrough	8
50' Marine Trader Accommodations	8
50' Marine Trader Salon	8
50' Marine Trader Galley	8
50' Marine Trader Dining	9
50' Marine Trader Master Stateroom	9
50' Marine Trader VIP Guest Stateroom	9
50' Marine Trader Forward Guest Stateroom	9
50' Marine Trader Laundry	9
50' Marine Trader Pilothouse	9
50' Marine Trader Flybridge	10
50' Marine Trader Aftdeck	10
50' Marine Trader Audio/Visual Equipment	10
50' Marine Trader Electronics	10
50' Marine Trader Electrical System	11
50' Marine Trader Engine/Mechanical Equipment	11
50' Marine Trader Deck Equipment	12
50' Marine Trader Safety & Fire Protection	13

50' Marine Trader Exclusions	13
50' Marine Trader Disclaimer	13
Exclusions	13
Disclaimer	13
PHOTOS	14
50' Marine Trader starboard forward profile	14
50' Marine Trader forward profile	14
50' Marine Trader anchor windlass	14
50' Marine Trader foredeck	14
50' Marine Trader port side deck photo1	15
50' Marine Trader foredeck aft	15
50' Marine Trader starboard side deck photo1	15
50' Marine Trader port side deck photo2	15
50' Marine Trader starboard side deck photo2	16
50' Marine Trader flybridge forward	16
50' Marine Trader flybridge aft	16
50' Marine Trader flybridge port	16
50' Marine Trader flybridge starboard	17
50' Marine Trader flybridge helm	17
50' Marine Trader aftdeck photo1	17
50' Marine Trader aftdeck photo2	17
50' Marine Trader aftdeck port	17
50' Marine Trader aftdeck starboard	17
50' Marine trader swimplatform	18
50' Marine Trader salon forward	18
50' Marine Trader salon aft	18
50' Marine Trader salon port seating	18
50' Marine Trader salon bar	18
50' Marine Trader salon wetbar	18

50' Marine Trader galley photo1	19
50' Marine Trader galley photo2	19
50' Marine Trader pilothouse	19
50' Marine Trader pilothouse port	19
50' Marine Trader pilothouse starboard	19
50' Marine Trader pilothouse helm	19
50' Marine Trader pilothouse electronics	20
50' Marine Trader master stateroom	20
50' Marine Trader master stateroom starboard	20
50' Marine Trader master stateroom port	20
50' Marine Trader master stateroom head	21
50' Marine Trader master stateroom forward	21
50' Marine Trader master stateroom shower	21
50' Marine Trader VIP guest stateroom	21
50' Marine Trader VIP guest stateroom starboard	22
50' Marine Trader VIP guest stateroom port	22
50' Marine Trader VIP guest stateroom forward	22
50' Marine Trader VIP guest stateroom aft	22
50' Marine Trader VIP guest stateroom shower	23
50' Marine Trader VIP guest stateroom head	23
50' Marine Trader forward guest stateroom custom cabinetry	23
50' Marine Trader forward guest stateroom	23
50' Marine Trader forward guest stateroom head	24
50' Marine Trader forward storage locker	24
50' Marine Trader washer-dryer	24
50' Marine Trader port engine room forward	24
50' Marine Trader port engine room aft	25
50' Marine Trader port main engine	25
50' Marine Trader port Racor fuel filter	25

50' Marine Trader starboard engine room	25
50' Marine Trader starboard Racor fuel filter	26
50' Marine Trader starboard main engine	26
50' Marine Trader stabilizer system	26
50' Marine Trader water heater	26
50' Marine Trader electrical panels	27
50' Marine Trader generator	27
50' Marine Trader hauled out	27
CONTACTS	28
Contact details	28
Telephones	28
Office hours	28
Address	28

SPECIFICATIONS

Overview

Calliope is a well-maintained, stabilized, classic 3 stateroom 1981 50' Marine Trader. She offers twin fuel efficient Ford Lehman 120 hp main engines, Thermopure 2 blackwater treatment system, 2500 watt inverter, stabilizers, 6'8" headroom and uncluttered, open interior layout. Calliope is capable of cruising the Great Loop with the mast lowered. She would also make a great liveaboard.

Seller reports fuel consumption of 6 gph at cruise speed.

Basic Information

Category: Trawler

Sub Category: Aft Cabin

Model Year: 1981

Year Built: 1981

Country: United States

Vessel Top: Bimini Top

Fly Bridge: Yes

Dimensions

LOA: 50' 0" (15.24m)

Beam: 15' 6" (4.72m)

Min Draft: 4' 7" (1.40m)

Max Draft: 4' 7" (1.40m)

Clearance: 16' 5" (5.00m)

Speed, Capacities and Weight

Cruise Speed: 7 Kts. (8 MPH)

Max Speed: 9 Kts. (10 MPH)

Displacement: 55000 Pounds

Water Capacity: 380 Gallons

Holding Tank: 80 Gallons

Fuel Capacity: 750 Gallons

Accommodations

Total Cabins: 3

Total Berths: 5

Sleeps: 8

Total Heads: 2

Hull and Deck Information

Hull Material: Fiberglass

Deck Material: Composite Fiberglass

Hull Configuration: Modified V-Hull

Hull Finish: Stainless Steel

Engine Information

Engines: 2

Manufacturer: Ford Lehman

Model: 120

Engine Type: Inboard

Fuel Type: Diesel

DETAILED INFORMATION

50' Marine Trader Vessel Walkthrough

From the covered aftdeck, you can walk out either side deck or walk through the sliding door to the salon. Once inside the salon, you will find a wet-bar starboard aft, master stateroom stairwell starboard, galley starboard forward, L-shaped sleeper/sofa and end table to port. Walk port forward into the pilothouse where you will find side deck access doors, full console, benchseat, ladder to the flybridge and steps down to the guest staterooms. Once on the lower deck, you will find a guest stateroom and head forward, VIP guest stateroom amidships, split engine rooms and then the master stateroom aft.

50' Marine Trader Accommodations

Calliope offers a full-beam master stateroom aft with ensuite head, VIP guest stateroom with ensuite head amidships and a guest stateroom forward with over/under bunks and head. The salon sofa converts to a double size berth.

50' Marine Trader Salon

The salon offers an L-shaped sleeper/sofa, folding hi/lo teak table and end table to port, wetbar with stainless steel sink, storage and U-Line icemaker starboard aft, master stateroom stairwell to starboard, teak parquet sole, opening side and aft windows with blinds and sliding door to the aftdeck.

50' Marine Trader Galley

The galley is located starboard forward in the salon.

- Sears refrigerator/freezer
- Kenmore dishwasher
- Brown 4-burner propane cooktop and oven
- Galanz microwave oven
- Double stainless steel sinks
- Storage cabinets and drawers
- Opening side window

- Formica countertop
- Teak parquet sole
- Sportsman's Series BBQ grill
- U-Line icemaker in the salon

50' Marine Trader Dining

Dining space is available at the salon hi/lo, folding teak table or the salon bar countertop.

50' Marine Trader Master Stateroom

The full-beam master stateroom aft offers a centerline queen size berth, teak parquet sole, desk to port, built-in file cabinet, hanging lockers, custom cabinetry to starboard, storage drawers and cabinets, 7 portlights with curtains, reading lights, nightstands and ensuite head with 1/2 tub/shower.

50' Marine Trader VIP Guest Stateroom

The VIP guest stateroom is amidships and offers a queen size berth, 2 portlights with curtains, nightstands, reading lights, fan, mirror, storage drawers and cabinets, hanging locker and ensuite head with 1/2 tub/shower.

50' Marine Trader Forward Guest Stateroom

The forward guest stateroom offers over/under bunks, custom cabinetry to starboard, shelf, hanging locker, fan, 2 portlights, reading lights, storage drawers and cabinets and teak parquet sole. The head is to port just aft of the stateroom.

50' Marine Trader Laundry

- Splendide Comb-O-Matic washer/dryer

50' Marine Trader Pilothouse

The pilothouse offers a full helm with storage underneath forward, opening center window, side deck access doors, ladder to the flybridge, stairs to the guest staterooms starboard forward and a

sliding window to the galley.

50' Marine Trader Flybridge

The huge flybridge offers a bimini, aluminum mast and boom for the tender davit, stainless steel rails, non-skid deck, hatch and ladder to the aftdeck, ladder to the pilothouse, L-shaped benchseat, helm benchseat and a console with storage.

50' Marine Trader Aftdeck

The covered aftdeck offers a non-skid deck, same level access to each side deck, ladder and hatch to the flybridge, transom gate, stainless steel ladder to the teak swimplatform, Sportsman's Series BBQ grill, painted teak cap rail and a sliding door to the salon.

50' Marine Trader Audio/Visual Equipment

- KVH Tracvision C3 satellite TV system
- Shakespeare TV antenna
- Sanyo flat screen TV in the salon
- Emerson flat screen TV in the master stateroom
- Dual MXD66 stereo/CD/WMA/MP3 player on the flybridge
- Jensen MCD5112 stereo/CD player in the pilothouse

50' Marine Trader Electronics

- Furuno 1700 Radar
- Furuno Navigator GPS in the pilothouse
- Standard-Horizon depth sounder on the flybridge and at the lower helm
- Robertson AP200DL autopilot in the pilothouse
- Robertson RI101 rudder angle indicator on the flybridge
- Interphase Probe forward seeking sonar on the flybridge
- Danforth Constellation magnetic compass on the flybridge

- Bergen-Navtik magnetic compass at the lower helm
- Seiki ship's computer monitor on the flybridge interfaced with a Sony laptop in the pilothouse with Nobeltec electronic chart software
- Standard Horizon Matrix AIS/GPS VHF on the flybridge
- Standard Horizon Spectrum VHF at the lower helm
- Datamarine Intl Offshore depth sounder at the lower helm
- Datamarine Navigator speed/log display at the lower helm
- David Wizard III weather station at the lower helm
- Howard Miller ship's clock at the lower helm
- Verkanderlich barometer at the lower helm
- Loudhailer

50' Marine Trader Electrical System

- Newage Stanford 15 kW generator with approximately 3,267 hours
- Heart Interface 2500 watt inverter with remote panel
- 12vdc outlet on the flybridge
- 10 X 6vdc golf cart house/start batteries (2015)
- 50 amp shore cord
- Shore power connection fore and aft
- 160 amp alternator
- All lighting converted to LED or CFL

50' Marine Trader Engine/Mechanical Equipment

- Twin Ford Lehman 120 hp main engines with approximately 5,684 hours (New injectors and pumps in 2015)
- Morse engine controls
- Dripless shaft seals

-
- Racor 500FG fuel filter with vacuum gauge for each main engine and the generator
 - Flo Scan fuel monitoring system
 - Hynautic hydraulic steering system
 - Wesmar stabilizer system
 - Marine Air Systems reverse cycle air conditioning/heating system
 - Raritan 20 gallon water heater
 - Groco Thermopure 2 blackwater treatment system
 - Siera electric heads

50' Marine Trader Deck Equipment

- Lofrans Tigres TG 006591 anchor windlass with knee controls and a remote at each helm
- Double stainless steel anchor rollers
- Plow type anchor
- Spare Danforth anchor
- Raw water washdown forward and fresh water washdown aft
- Stainless steel rails forward and painted teak rails on each side and aft
- Stainless steel fender racks forward
- Marquipt Sea Stairs gangway
- Foredeck benchseat
- Salty Dog foredeck storage box
- Windscreen and window covers
- Portuguese Bridge storage lockers
- Non-skid decks
- Boarding gates each side and aft
- Teak swimplatform
- Stainless steel swim ladder

- Rod holders
- Hull and superstructure have been painted with Awlgrip and the teak cap rails have been painted with Imron

50' Marine Trader Safety & Fire Protection

- Fire extinguishers
- Fireboy 1301 Halon engine room fire suppression system
- Lifering
- Lifesling Overboard Rescue System

50' Marine Trader Exclusions

- Sellers' personal belongings

50' Marine Trader Disclaimer

The Company offers the details of this vessel in good faith but cannot guarantee or warrant the accuracy of this information nor warrant the condition of the vessel. A buyer should instruct his agents, or his surveyors, to investigate such details as the buyer desires validated. This vessel is offered subject to prior sale, price change, or withdrawal without notice.

Exclusions

Owner's personal belongings.

Disclaimer

The Company offers the details of this vessel or yacht in good faith but cannot guarantee or warrant the accuracy of this information nor warrant the condition of the vessel. A buyer should instruct his representatives, agents, or his surveyors, to investigate such details as the buyer desires validated. This vessel or yacht is offered subject to prior sale, price change, or withdrawal without notice.

PHOTOS

50' Marine Trader starboard forward profile



50' Marine Trader forward profile



50' Marine Trader anchor windlass



50' Marine Trader foredeck



50' Marine Trader foredeck aft



50' Marine Trader port side deck photo1



50' Marine Trader port side deck photo2



50' Marine Trader starboard side deck photo1



50' Marine Trader starboard side deck photo2



50' Marine Trader flybridge forward



50' Marine Trader flybridge aft



50' Marine Trader flybridge port



50' Marine Trader flybridge starboard



50' Marine Trader flybridge helm



50' Marine Trader aftdeck photo1



50' Marine Trader aftdeck photo2



50' Marine Trader aftdeck port



50' Marine Trader aftdeck starboard



50' Marine trader swimplatform



50' Marine Trader salon forward



50' Marine Trader salon aft



50' Marine Trader salon port seating



50' Marine Trader salon bar



50' Marine Trader salon wetbar



50' Marine Trader galley photo1



50' Marine Trader galley photo2



50' Marine Trader pilothouse



50' Marine Trader pilothouse port



50' Marine Trader pilothouse starboard



50' Marine Trader pilothouse helm



50' Marine Trader pilothouse electronics



50' Marine Trader master stateroom



50' Marine Trader master stateroom port



**50' Marine Trader master stateroom
starboard**



50' Marine Trader master stateroom head

50' Marine Trader master stateroom forward



50' Marine Trader master stateroom shower



50' Marine Trader VIP guest stateroom



50' Marine Trader VIP guest stateroom port



50' Marine Trader VIP guest stateroom starboard



50' Marine Trader VIP guest stateroom forward



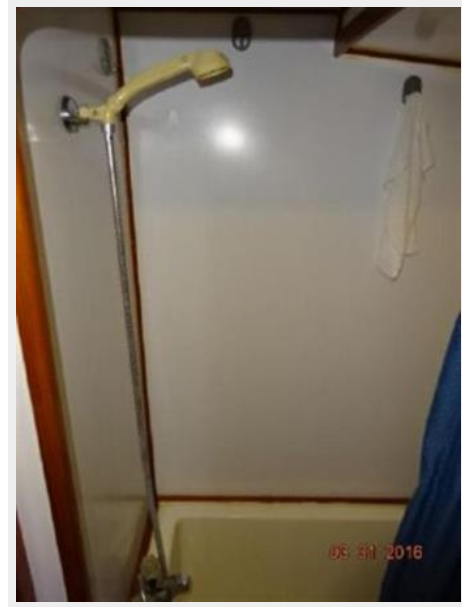
50' Marine Trader VIP guest stateroom aft



50' Marine Trader VIP guest stateroom head



50' Marine Trader VIP guest stateroom shower



50' Marine Trader forward guest stateroom



50' Marine Trader forward guest stateroom custom cabinetry



50' Marine Trader forward guest stateroom head



50' Marine Trader forward storage locker



50' Marine Trader washer-dryer



50' Marine Trader port engine room forward



50' Marine Trader port engine room aft



50' Marine Trader port main engine



50' Marine Trader port Racor fuel filter



50' Marine Trader starboard engine room



50' Marine Trader starboard Racor fuel filter



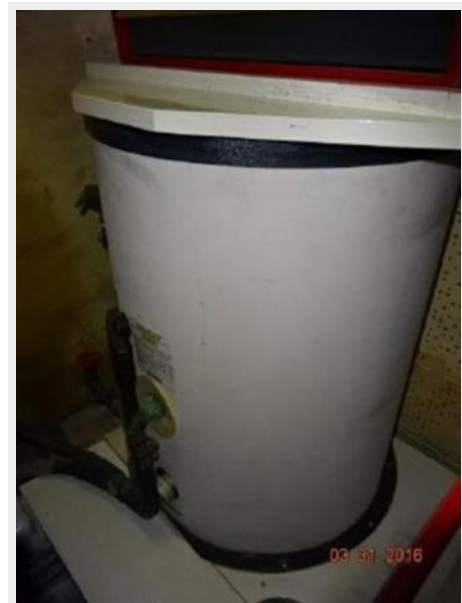
50' Marine Trader starboard main engine



50' Marine Trader stabilizer system



50' Marine Trader water heater



50' Marine Trader electrical panels



50' Marine Trader generator



50' Marine Trader hauled out



CONTACTS

Andrey Shestakov, leading yacht broker of the sales department of Shestakov Yacht Sales Inc. Shestakov Yacht Sales Inc., the official representative of the Miami/Fort Lauderdale FL headquarters.

Contact details

Email: andrey@shestakovyachtsales.com

Web: shestakovyachtsales.com/en/

Telephones

USA: +1(954)274-4435

Office hours

Monday – Saturday: **9:00 - 21:00** EDT

Sunday: **closed**

Address



Harbour Towne Marina, 850 NE 3rd St,
STE 213, Dania, FL 33004