

## NO NAME — VIKING



**Судостроитель:** VIKING

**Год постройки:** 2011

**Модель:** Катер для спортивной рыбалки

**Цена:** ЦЕНА ЯХТЫ ПО ЗАПРОСУ

**Местонахождение:** United States

**Длина общая:** 54' 0" (16.46m)

**Ширина:** 17' 8" (5.38m)

**Крейс. скорость:** 33 Kts. (38 MPH)

Купить **No Name — VIKING** а также выбрать подходящую вам яхту из нашего каталога яхт вам поможет опытный яхтенный брокер Андрей Шестаков. На сегодняшний день компания **Shestakov Yacht Sales Inc.** имеет большое количество яхт в собственном списке продаж, а также тесно сотрудничает со всеми крупными яхтенными производителями по всему миру.

Для того чтобы купить яхту **No Name — VIKING** а также проконсультироваться по любому вопросу связанному с покупкой, продажей, чартером яхт позвоните по телефону **+7(918)465-66-44**.

# ОГЛАВЛЕНИЕ

ОГЛАВЛЕНИЕ	2
ХАРАКТЕРИСТИКИ	5
Обзор	5
Основная информация	5
Размеры	5
Скорость, вместимость и масса	5
Размещение	5
Корпус и палуба	6
Информация о двигателе	6
ПОДРОБНОЕ ОПИСАНИЕ	7
Rise Up	7
Salon	7
Galley and Dinette	7
Master Stateroom	8
Master Head	8
Guest Stateroom	8
VIP Stateroom	9
Guest Head	9
Flybridge	10
Electronics	10
Electrical System	10
Engine Room	11
Companionway	12
Cockpit	12
Hulls and Decks	13
Lazarette	14
Construction	14
Exclusions	14

Broker's Remarks	14
Исключения	14
Отказ от ответственности	15
ФОТОГРАФИИ	16
Starboard Bow	16
Starboard Profile	16
Salon	16
Salon Seating	16
Salon	16
Dinette	16
Salon	17
Galley	17
Galley	17
Galley	17
Galley	17
Galley	17
Galley	18
Laundry	18
Bunk Room	18
Bunk Room	18
Guest Head	18
Guest Head	18
Master Stateroom	19
Master Stateroom	19
Master Stateroom	19
Master Stateroom	19
Master Stateroom	19
Master TV	19
Master Head	20

---

VIP Sateroom	20
VIP Stateroom	20
Cockpit	20
Cockpit	20
Cockpit	20
Cockpit	21
Cockpit	21
Cockpit	21
Helm	21
Helm Seating	21
Helm	21
Helm	22
Compsnion Seating	22
Flybridge Seating	22
Logo	22
Teaser Reels	22
Engine Room	22
Cockpit	23
<b>КОНТАКТЫ</b>	<b>24</b>
Контактная информация	24
Телефоны	24
Время работы	24
Адрес	24

# ХАРАКТЕРИСТИКИ

## Обзор

Galati Yacht Sales has been committed to exceeding the expectations of its customers since 1970, and we understand that purchasing a boat is a big decision. Our professional staff is here to assist you in every way – before, during and after the sale. Please feel free to contact us with any questions that you may have.

## Основная информация

**Тип судна:** Катер для спортивной рыбалки

**Подкатегория:** Convertible

**Модельный год:** 2011

**Год постройки:** 2011

**Страна:** United States

**Открытая палуба мостика:** Да

## Размеры

**Длина общая:** 54' 0" (16.46m)

**Ширина:** 17' 8" (5.38m)

## Скорость, вместимость и масса

**Крейс. скорость:** 33 Kts. (38 MPH)

**Крейсерская скорость поворота:** 40 Kts.

**Водоизмещение:** 77900 Pounds

**Вместимость воды:** 225 Gallons

**Вместимость сточного бака:** 100 Gallons **Объем топливного бака:** 1745 Gallons

## Размещение

**Всего кают:** 3

**Всего ком. состава:** 2

## Корпус и палуба

---

**Материал корпуса:** Fiberglass

## Информация о двигателе

---

**Производитель:** MAN

**Модель:** 1550 CRM

**Тип двигателя:** Inboard

**Тип топлива:** Diesel

---

# ПОДРОБНОЕ ОПИСАНИЕ

---

## Rise Up

---

You have found it! The only Viking 54 Convertible available in the world. "Rise Up" is a pampered, completely dialed in and properly equipped 54C. She has every feature that one could want in a tournament sportfish, including tuna tubes, LED underwater lights, watermaker, ice chipper, FLIR camera system, teak cockpit, Man 1550 CRM's with all services up-to-date, low hours and the extra fuel option! You will not find a nicer Viking on the market, period. If you have been following the late model convertible market, you know that there's very little available right now. Clear your schedule and come see Rise Up this week!

## Salon

---

- Premier Edition Décor
- Sofa upgrade style, Ultraleather distressed buckskin with two arms and storage
- Custom wallpaper material
- Two bar stools with backs and teak pedestal
- Amtico flooring/salon entranceway: 4.5" planks, variable oak with strips of black walnut
- Salon door with push-button electric door opener
- 42" flat panel television over dinette
- AC receptacle under dinette table
- Teak strips in between head liner panels
- Cocktail Table, Teak
- Home Theater System with 37" Flat Screen TV w/ Bose LS18 DVD/CD Stereo System
- L-Shaped Lounge with Rod Storage Underneath

## Galley and Dinette

---

- Dinette with: Custom teak table w/ high gloss finish, Curved bench seat with under bench storage, starboard forward
- Three overhead lights in galley
- Stainless steel sink with Grohe hot/cold water faucet and Insinkerator garbage disposal
- Kenyon 4-burner electric stovetop
- Sub-Zero 2-drawer refrigerator
- Sub-Zero 2-drawer freezer
- Sharp Carousel convection/microwave oven
- Kenmore trash compactor
- Custom granite counter top: espresso with stainless sink
- Amtico flooring: 4.5" planks, variable oak with strips of black walnut

---

## Master Stateroom

---

- 19" LCD Flat Screen TV
- Carpeted sole
- Vinyl overhead
- Six overhead recessed lights
- Built-in nightstand, inboard and outboard
- Cruisair air conditioning control, port
- Cabinet with hanging locker and three drawers, port forward outboard
- 200-gallon fuel tank below deck
- Water tank below deck
- Three drawers, outboard
- Cabinet with drawer and shelved locker
- Air conditioning fan coil
- 1A10BC dry chemical fire extinguisher
- Volume control
- Soffit with recessed lights, aft
- Mirror on aft bulkhead
- Ship's manuals below berth
- Queen berth with: Rope lighting, Two storage drawers, Custom bedspread, Two matching pillow shams, Bed pillows, Mattress, Upholstered headboard, Throw pillows

---

## Master Head

---

- Amtico flooring: 4.5" planks of black walnut
- Corian vanity countertop: Willow - matte finish with Bone sink
- One piece frameless custom shower door
- Vinyl overhead with two recessed lights
- Vanity with: Composite counter, Molded sink, Sink with hot and cold water faucet, Storage locker below
- Medicine locker with two mirrored doors and three recessed lights above in soffit
- Vacuflush head
- Holding tank macerator pump switch under sink
- Overhead hatch with blackout and insect screen
- Fiberglass shower enclosure with: Overhead light, Frameless glass door, Adjustable telephone type shower handle on hose with wall mount, Single lever faucet

---

## Guest Stateroom

---

- Crossover Layout, with Lift-Up Lower Bunks
- Carpeted sole
- Vinyl overhead



- Overhead recessed lights
- Two stereo speakers, outboard
- Cruisair air conditioning control
- Hanging locker with overhead light
- Matching fabric to bedspreads, pillow shams, and throw pillows
- Air conditioning fan coil
- Volume control

---

## VIP Stateroom

---

- Carpeted sole
- Vinyl overhead
- Overhead recessed lights
- Two overhead stereo speakers
- Overhead hatch with screen and privacy cover
- ¾ berth, starboard
- ¾ bunk, port
- Matching fabric to bedspread and pillow shams
- Locker below port bunk
- Cruisair air conditioning control
- Mirrored bulkhead, forward
- Sharp color TV, starboard forward
- Hatch with blackout and insect screens, centerline
- Volume control
- Air conditioning fan coil
- Shelved lockers, starboard
- Holding tank and hold light below stateroom sole

---

## Guest Head

---

- Entrance via companionway and starboard guest stateroom
- Vinyl overhead with recessed lights
- Shower enclosure with: Light overhead, Bi-fold glass door, Adjustable telephone type showerhead with adjustable wall mount
- Single lever faucet
- Bench seat
- Vanity with: Composite counter, Molded sink, Sink with hot and cold water faucet, Storage locker below
- Medicine locker with two mirrored doors and three overhead recessed lights in soffit
- Vacuflush head
- HeadBlower
- Amtico flooring: 4.5" planks of American Ash

- Corian vanity countertop: Willow - matte finish with Bone sink

## Flybridge

---

- Top Mounted Single Lever Electronic Controls
- Moritz Safety Monitoring System with Audible and Visible Alarms
- Murray Products Helm and Companion Seats
- Lounge Seating Forward with Storage
- Removable Flybridge Jumpseat Backrest
- Fiberglass Hardtop with 300 watt molded-in quartz lights
- Electronic Trolling Valves
- (6) rod rocket launcher
- Refrigerated flybridge drink box
- Costa enclosure, three sided front and sides
- Drip dry foam IPO standard for flybridge cushions
- Electric teaser reels
- Powder coat air horns
- Release teak helm pod
- Costa clear on front and sides of enclosure
- Viking hardtop
- Windscreen, centerline
- Access door to bulwark locker
- Cruisair 30,000 BTU air conditioning unit in bulwark
- Drink box, starboard forward
- Bench seat, port fore and aft, with: Storage, Kidde 3A40BC dry chemical fire extinguisher
- Bench seat with storage to starboard
- Ritchie Powerdamp compass

## Electronics

---

- FLIR Nightvision camera (2015)
- Two MAN diesel engine display panels
- Two ICOM IC-M604 VHF radios
- Simrad AP24 autopilot
- Garmin 7215 plotter
- Furuno RD30 GPS
- Fusion AM-FM/CD player
- Two Furuno NavNet displays w/ new radar (2015)

## Electrical System

---

- Dimmers- AC interior lighting throughout
- Generator, Onan 21.5kw EQD
- Lighting, overhead xenon lights recessed in ceiling

## Engine Room

---

- MAN V13 1550 CRM - 1550 MHP upgraded engines
- Engine start and stop ignition switches
- Shore power cord breakers
- Diverters off port engine raw water intake for emergency bilge pumping
- Two electric/automatic bilge pumps, aft
- Dual Racor 1000 fuel filters to each engine
- Racor 500 generator fuel filter
- Dual Delta "T" ventilator fans and demisters, port and starboard
- 12-volt ship's service batteries in covered boxes, four port and four starboard
- Water tank fill valve
- Whale dryout bilge pumps
- High water alarm float switch, forward
- Two shore power breakers
- Craftsman toolbox
- Glendinning Cablemaster, starboard outboard
- CCTV camera, port and forward
- Domestic water filters, forward
- Entry, aft, with: 2-step ladder, Four refrigerator/freezer controls, Digital tachometers for port and starboard main engines, Oil pressure for port and starboard main engines, Water temperature, Fishbox drain switch, Engine room fan switch, Saltwater pump switch, Engine room lights
- Dripless drive shaft seals
- Oil change pump to engines, generator, and gears with manifold, centerline aft
- Eskimo ice machine
- Freshwater outlet
- 115-volt A.C. saltwater pump, starboard outboard
- Start/stop buttons for port and starboard main engines
- Water filter
- Two MAN electronic control modules
- Fuel priming pumps for port and starboard main engines
- Seaward 20-gallon water heater
- Four air conditioning compressors with 110-volt raw water circulating pump
- Sea-Fire 72-lb FM200 cylinder
- Charles ISO Boost 50 isolation transformer, starboard
- Charles 12KA ISO isolation transformer, port
- Livewell circulating pump
- 24-volt saltwater washdown pump

- Two Cruisair units to cockpit refrigeration
- Two fuel transfer pumps, port outboard
- Condensation pump, port aft
- Par 24-volt washdown pump
- Sea Star hydraulic steering system with: Reservoir, Pressure gauge, Filter, Heat exchanger
- Fiberglass 210-gallon fuel tank, centerline forward
- Condensation sump, port forward
- Domestic water discharge manifold
- Sea Recovery watermaker
- Four battery switches
- 12/24-volt D.C. breakers
- Backup D.C. crossover switches
- Newmar Phase Three PT-24-95 battery charger
- Newmar Phase Three PT-24-45 battery charger
- Two Newmar D.C. to D.C. converters
- Generator remote gauge panel on bridge
- Crossover valves for fuel transfer pumps
- Generator
- Trim Tabs

---

## Companionway

---

- Laundry Center with Stackable Washer and Dryer behind Teak Door
- Carpeted sole and steps with canvas runner
- Central vacuum system under steps
- Two head diverter valves
- Head vacuum pumps with tank
- Hold light
- Two electric/automatic bilge pumps under companionway
- High water alarm under companionway
- Bilge dryout pump
- Sump tank and pump

---

## Cockpit

---

- Custom tuna tube installation (2015)
- Custom teak cockpit and mezzanine teak (new 2015)
- 6-step ladder to bridge, port
- Recessed gunwale rod holders, two port, two starboard, and two aft
- Stereo speakers under gunwales, port and starboard
- Transom door, port
- Two stern cleats

- Two stainless steel hawse eyes
- LED light in overhang, port and starboard
- Rope lighting below gunwale
- Two D.C. outlets for electric reels
- Oil transfer fitting, port forward
- Fresh water inlet connection, port forward
- Washdown outlet
- Washdown selector valve
- Oil transfer switch
- Salon door switch
- Dockside water connector, starboard
- Bluewater fighting chair with rocket launcher
- Built-in cabinetry, port
- Aft facing bench seat
- Hubbell telephone/TV inlet, starboard
- JL speakers, port and starboard
- Fusion MS NRX200 stereo
- Cablemaster retractable power cord, starboard
- Hubbell 125/250V50A shore power connector, starboard
- Chill box in step to salon
- Box for ice chipper, starboard
- Live well in sole
- Outriggers, triple-spreader Rupp
- Refrigerated cockpit step box
- Transom coaming with gate and with transom fish box
- Freshwater wash down
- Seawater wash down
- Lazarette hatch
- Observation mezzanine with starboard aft-facing lounge seating, hinged seat with underneath freezer
- Recessed in-deck fishbox
- Recessed in-deck storage box to starboard
- Rodholders, Rupp (4)
- Transom Swim Steps at Transom Door
- Walk Through Transom Door with Lift Gate

---

## Hulls and Decks

---

- Lewmar V4 SS Windlass (gypsy and drum)
- Fiberglass deck with non-skid
- Two bow cleats
- Two spring cleats
- Fortress FX55 anchor 10' of chain and approximately 300' of 3/4" nylon rode

- Three deck hatches to accommodations area
- Fiberglass decks with non-skid
- Spring cleat, port and starboard
- Three diesel fills, port
- Water fill, starboard
- Grab rail above salon window, port and starboard
- Qty 4 underwater lights
- Two boarding steps

---

## Lazarette

---

- Hydraulic steering actuator
- High water alarm
- Electric/automatic bilge pump
- Two trim tab reservoirs and control units
- Fiberglass fuel tank
- Fishbox macerator pumps
- Autopilot feedback sensor
- Recessed fishbox
- Recessed livewell

---

## Construction

---

- Dockside and Overboard Pump Outs for Holding Tanks
- Infused Fiberglass Fuel and Holding Tanks
- Solid Reinforced Keel
- Stringers, Fiberglass Encapsulated Foam

---

## Exclusions

---

Owner's personal belongings, Liferaft, EPIRB

---

## Broker's Remarks

---

Pristine 54C all around. Every option available.

---

## Исключения

---

При продаже яхты исключаются личные вещи владельца.

---

## Отказ от ответственности

---

Компания предоставляет описание судна или яхты добросовестно, но не может гарантировать точность этой информации, а также не ручается за техническое состояние. Покупатель должен проинструктировать своих агентов или оценщиков исследовать представленную информацию более подробно, по собственному желанию. Продажа судна или яхты, изменение цены или снятие с продажи будет происходить без предварительного уведомления.

# ФОТОГРАФИИ

**Starboard Bow**



**Starboard Profile**



**Salon**



**Salon Seating**



**Salon**



**Dinette**





**Salon**



**Galley**



**Galley**



**Galley**



**Galley**



**Galley**



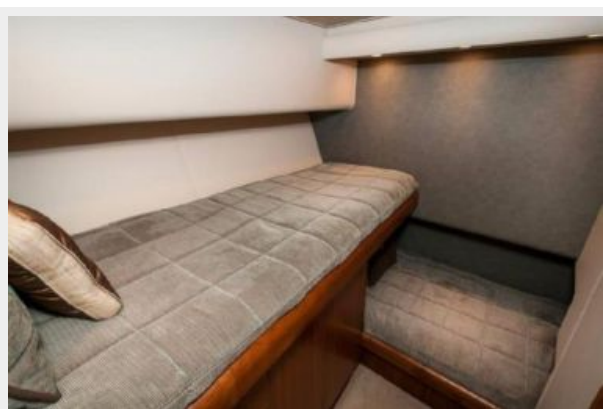
**Galley**



**Laundry**



**Bunk Room**



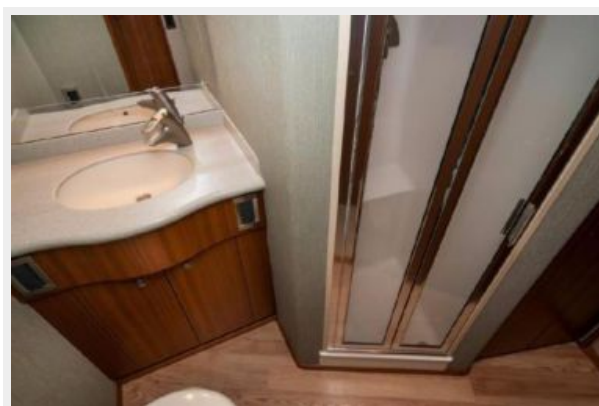
**Bunk Room**



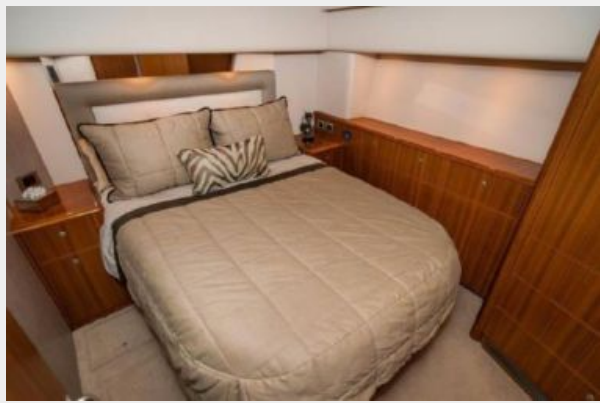
**Guest Head**



**Guest Head**



**Master Stateroom**



**Master Stateroom**



**Master Stateroom**



**Master Stateroom**



**Master Stateroom**



**Master TV**



**Master Head**



**VIP Stateroom**



**VIP Stateroom**



**Cockpit**



**Cockpit**



**Cockpit**



**Сockpit**



**Сockpit**



**Сockpit**



**Helm**



**Helm Seating**



**Helm**



**Helm**



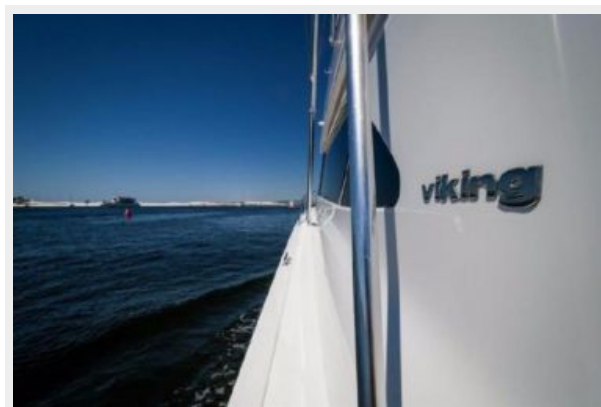
**Compsnion Seating**



**Flybridge Seating**



**Logo**



**Teaser Reels**



**Engine Room**



## Сокпит



# КОНТАКТЫ

---

Андрей Шестаков (Andrey Shestakov) – ведущий яхтенный брокер отдела продаж яхт и судов компании Shestakov Yacht Sales Inc. Официальный представитель Shestakov Yacht Sales Inc. для русскоговорящих клиентов в центральном офисе компании в Майами/Форт Лодердейл/Флорида/США.

## Контактная информация

---

Email: [andrey@shestakovyachtsales.com](mailto:andrey@shestakovyachtsales.com)

Web: [shestakovyachtsales.com](http://shestakovyachtsales.com)

## Телефоны

---

Краснодарский край: **+7(918)465-66-44**

США, Майами, Флорида: **+1(954)274-4435**

## Время работы

---

Понедельник – Суббота: **9:00 - 21:00**  
EDT

Воскресенье: **Закрето**

## Адрес

---



Harbour Towne Marina, 850 NE 3rd St,  
STE 213, Dania, FL 33004