

JOHNSON 65 MOTOR YACHT — JOHNSON



Судостроитель: JOHNSON

Год постройки: 1995

Модель: Моторная яхта

Цена: **ЦЕНА ЯХТЫ ПО ЗАПРОСУ**

Местонахождение: United States

Длина общая: 65' 0" (19.81m)

Ширина: 19' 0" (5.79m)

Макс. осадка: 5' 6" (1.68m)

Крейс. скорость: 28 Kts. (32 MPH)

Купить **JOHNSON 65 MOTOR YACHT — JOHNSON** а также выбрать подходящую вам яхту из нашего каталога яхт вам поможет опытный яхтенный брокер Андрей Шестаков. На сегодняшний день компания **Shestakov Yacht Sales Inc.** имеет большое количество яхт в собственном списке продаж, а также тесно сотрудничает со всеми крупными яхтенными производителями по всему миру. Для того чтобы купить яхту **JOHNSON 65 MOTOR YACHT — JOHNSON** а также проконсультироваться по любому вопросу связанному с покупкой, продажей, чартером яхт позвоните по телефону **+7(918)465-66-44**.

ОГЛАВЛЕНИЕ

ОГЛАВЛЕНИЕ	2
ХАРАКТЕРИСТИКИ	4
Обзор	4
Основная информация	4
Размеры	4
Скорость, вместимость и масса	4
Размещение	4
Корпус и палуба	5
Информация о двигателе	5
ПОДРОБНОЕ ОПИСАНИЕ	6
Updates, Preventative Maintenance & Repairs Done In Recent Years	6
Key Features and Recent Upgrades Done In Recent Years	7
Vessel Overview	9
Flybridge	10
Salon	11
Galley	12
Dinette	13
Lower Helm Station	13
Forward Companion Way	14
VIP Cabin	14
VIP Head	15
Starboard Guest Cabin	15
Starboard Guest Head	15
Portside Guest Cabin	15
Guest Head	16
Aft Companionway	16
Master Cabin	16
Master Head	17

Crew Cabin	17
Foredeck	17
Aft Deck	18
Engine Equipment	19
Electrical Equipment	20
Исключения	21
Отказ от ответственности	22
ФОТОГРАФИИ	23
КОНТАКТЫ	26
Контактная информация	26
Телефоны	26
Время работы	26
Адрес	26

ХАРАКТЕРИСТИКИ

Обзор

On Display at Palm Beach International Boat Show - Ramp 6.

Johnson 65 is a popular and comfortable cruising boat with a large owners aft cabin and raised aft deck.

The vessel includes two large staterooms en suite, two smaller cabins en suite and also a crew quarters en suite. She is the perfect liveaboard for someone looking for a quality vessel without the massive price tag.

This 65 Johnson, having been through a complete refit, shows like a new boat.

Основная информация

Тип судна: Моторная яхта

Модельный год: 1995

Год постройки: 1995

Год обновления: 2016

Страна: United States

Размеры

Длина общая: 65' 0" (19.81m)

Ширина: 19' 0" (5.79m)

Макс. осадка: 5' 6" (1.68m)

Скорость, вместимость и масса

Крейс. скорость: 28 Kts. (32 MPH)

Вместимость воды: 500 Gallons

Объем топливного бака: 1000 Gallons

Размещение

Всего кают: 4

Всего ком. состава: 4

Корпус и палуба

Материал корпуса: GRP

Информация о двигателе

Двигатели: 2

Производитель: MAN

Модель: 2842 LZE

Тип двигателя: Inboard

Тип топлива: Diesel

ПОДРОБНОЕ ОПИСАНИЕ

Updates, Preventative Maintenance & Repairs Done In Recent Years

HULL & DECK

Replaced anchor windlass

Rebuilt anchor roller

Replaced salon sliding window frames

Replaced forward acrylic hatch lenses

Installed new rub rail

Passerelle system rebuilt

Bottom peeled, fiber glassed and repainted in Ft. Lauderdale

Replaced all flybridge and sunpad cushions New micro controls and Thruster controls on Port and Starboard wing stations

MACHINERY/SYSTEMS/INTERIOR

Inflame rebuild/major overhaul on both engines by Scott Power of Ft. Lauderdale 2 years ago

Painted engines with AwlGrip

Installed new dripless packing glands

Installed new Side Power bow thruster, controls & batteries

Installed new ultra quiet air compressor for salon door

Replaced both hot water heaters

Installed new fresh water pump system

Replaced all waste hoses throughout

Replaced all scupper hoses throughout

Replaced all bilge pump hoses throughout

Replaced all fuel system hoses; fill, vent, return & supply hoses

Extensively updated A/C System

Replaced both cockpit Frigibar refrigerators

Installed new ACR Spotlight system

Updated Raymarine electronics package

Updated AV/Audio/ Video

Updated exterior lighting

New custom mattresses throughout

Updated house & inverter system

Replaced flybridge icemaker

Replaced generator exhaust system Rebuilt all heads

Updated engine room sound insulation Varnished interior floors

Updated interior upholstery

Key Features and Recent Upgrades Done In Recent Years

The current owner has accomplished countless upgrades to the yacht during the last few years.

Interior Improvements

Salon couch upholstery

Entertainment center carpentry upgrade

New Sony Surround Sound Home Theatre

New Salon closed circuit TV

(13) Mirrors replaced

Varnished Head & Galley soles

(4) New DC stateroom stereos

Dinette upholstery

New Galley refrigerator

New Ceran top cook top

New convection microwave

New dishwasher

Exterior Improvements

New navigation lights

Rebuilt anchor locker sub floor

300' New anchor chain

(2) New VHF antennas

Teak Aft Deck table & (8) chairs

New Fridge Aft Deck freezer

Rebuilt/rehosed hydraulic passarelle/davit

Spare props balanced & stowed

Main props balanced & mounted

Port shaft pulled & balanced

Bottom soft paddled to gelcoat, epoxy sealed & painted

New Sidepower Bow Thruster , controls, batteries

Black boot stripe repainted

Silver boot stripe repainted

Grey feature stripe on Aft Deck repainted

New Lexan on all deck hatches, hatched rebedded

New Aft Deck closed circuit TV camera

New Black Textulene windshield cover

New Bimini top

New bridge cushions

New Raymarine E120

New Raymarine E80

New Horizon hailer

New bilge alarms

New Flybridge U Line fridge & icemaker

Extra hose bib mounted under Flybridge bar

220 Volt outlet on Flybridge for dive compressor

Lower helm nav computer interfaced to Raymarine on Flybridge

Engine Room Upgrades

(2) New Silicon couplers on transmissions

(2) New raw water impellers

12 Volt auxiliary alternator added to starboard engine

New Magna Sine Magnum 2500 watt inverter system

Fiberglass exhaust system rebuilt w/Cool Tar epoxy

New Aft Cabin black water tank monitor & control system

New Rule 3700 bilge pump forward

New floorboards in Engine Room

New bonding throughout the boat

Vessel Overview

HAPPY DAYS is unusual in that she offers four generous staterooms, four heads plus a forward Crew Cabin for two with a Head.

Entering from the spacious Aft Deck the Salon is two steps down with the Galley forward to starboard and the Dining area forward to port. A well laid out Lower Helm is just forward of the Galley. Centerline steps lead to a forward VIP with Private Head. To port is a twin Lower Stateroom and Head and shower and to starboard is an upper/lower Stateroom with a its own head and shower.

Aft and down from the Salon is the entrance to the Engine Room and very private spacious

Master Suite.

Flybridge

The Flybridge is well laid out and will seat at least seven people with a sun pad for four more in a unique area over the hardtop. Equipment includes:

Stainless steel glass door at top of steps w/sliding glass & stainless steel panel to close off Aft Deck

Tinted Venturi windscreen w/stainless handrail

Bimini top

Wet bar w/covered sink & storage cabinet below

U Line refrigerator w/icemaker

Helm cover

Freshwater wash down

L shaped seating w/removable cushions & storage below & canvas cover

ACR Rapid Fax EPIRB

Safety grab rails at Helm

Givens six person life raft w/hydrostatic release

Custom stainless steel grab rail surround for sun berth area serves as a windbreak

Custom pipe arch for open array Raymarine antenna

Trac Vision 4 Sat TV antenna

Flybridge Helm Equipment

The centerline Helm affords excellent visibility and has the following equipment:

Raymarine E 120 plotter/sounder/monitor for camera

Raymarine E80 plotter/depth/monitor

Simrad AP 27 autopilot handheld remote

5" Ritchie magnetic compass

Full VDO analog engine gauges

Full audio/visual engine alarm system

Bow thruster joystick control w/proportional control

Bennett trim tab controls

URC 100 ACR searchlight controls

Air horn button

Muir windlass controls w/chain counter

Stainless steel helm wheel w/power assist

New Microcommander single lever electronic clutch & throttle controls

VDO rudder angle indicator

Bilge pump monitor panel

Intercom

Clarion AM/FM/CD/stereo Sat ready w/removable face plate

Standard Horizon LHS hailer/fog horn

110 GFCI outlet

Start/stop switches

iCom System

Horizon LHS hailer/fog horn

Salon

Salon

Entered via a pneumatic or manual sliding stainless steel door the Salon is two steps down. Of special note and different than most of her sisterships is the high gloss joinery that carries throughout the yacht.

Immediately to starboard is a very large C shaped settee, newly upholstered and with vast amounts of storage below.

Further forward is the yacht's entertainment center consisting of a Samsung 26" LCD TV, a Sony DAV I510 DVD/Home Theatre/CD/AM FM receiver, the Direct TV Sat receiver, an iPod dock and three black storage drawers for CD's/DVD's and remotes. Next forward is a storage cabinet which encloses the Sony subwoofer and the KVH Sat TV service access point.

This area has been recently upgraded to accept late model entertainment components for a very clean uncluttered look.

Next forward facing aft is a two door cabinet enclosing the Salon's liquor locker and additional storage.

The entire area above has a wood countertop with table lamps, artwork and plants.

To both port and starboard are stainless steel trimmed windows with an opening center section, Duette shades and demi drapes.

Overhead are eight dual voltage overhead lights and three halogen mini spots.

Also in the Salon is a Sony Surround Sound system, digital AC controls, an intercom system, rope lighting behind the upholstered valance and an alarm system keypad.

Galley

The Galley area is two steps up and forward on the starboard side. It is U shaped, surprisingly spacious and includes the following equipment:

Full size Frigidaire stainless steel two door refrigerator/freezer

Origo 3 burner Ceran top cooktop concealed below hinged Corian countertop

Stainless steel sink

New sink faucet w/removable spray attachment

Soap dispenser

Black & Decker built in coffeemaker

GE Monogram stainless steel trash compactor

Kenmore stainless steel microwave/convection oven

Intercom

GE Under counter dishwasher below sink

(10) Cabinet doors

(3) Drawers

Varnished wood sole

Overhead lights

Water tank gauge

Exhaust fan

Corner cabinet w/(2) large pullout shelves

Dinette

The Dining Area is to port. It consists of a six place settee upholstered to match the Salon settee. There is abundant storage below. A unique pedestal table with fold out leaves for dining has three storage drawers within for additional Galley storage.

Two hinged storage cabinets forward offers abundant additional storage.

There is plenty of natural light via the wrap around windshield and four AC/DC light fixtures above.

Lower Helm Station

The Lower Helm Station is just forward of the Galley on the main deck, starboard side. The large wrap around windshield provides excellent visibility. Equipment in this area includes:

Acer 22" LCD screen to link to ship's navigation computer

Stephens Engineering SEA 156 VHF w/handset type microphone

Full analog VDO engine gauges

Full audio/visual engine alarm system

Bow thruster joystick control

Bennett trim tab controls

URC 100 ACR searchlight controls

Kahlenburg air horn button

5" Ritchie magnetic compass

Stainless steel helm wheel w/power assist

High water bilge alarm to all (6) compartments w/indicator lights

(6) Racor fuel filter water alarms

Microcommander single lever electronic clutch & throttle controls

Fireboy engine shutdown override panel

(2) Electric VDO fuel tank gauges

New pedestal helm seat w/standup bolster

Groco holding tank pump control panel

Forward Companion Way

Centerline between the Lower Helm and Dinette are six carpeted steps with rope lights and a stainless steel handrail. At the top of the steps is the AC electrical panel. At the bottom of the steps forward is the entrance to the VIP Cabin. To port is the Guest Head, continuing to port aft and down two steps is the Portside Guest Cabin.

To starboard and down two steps is the Starboard Guest Cabin.

VIP Cabin

Due to the generous beam the VIP Cabin can only be described as huge! A five panel beveled edge mirror is all the way forward with twin brass swing arm lamps serving as reading lamps. An upholstered headboard accents the full size queen centerline berth. Below the berth at the foot are two drawers, accent rope lighting and additional storage under the mattress. To both port and starboard are built in nightstands with light switches, outlets and an intercom on the starboard side. Storage is below via single cabinet door. On the portside are additional outlets and a new Pioneer AM/FM/CD/DVD player. Continuing port and starboard on both sides are under counter cabinets with an opening stainless steel porthole, full drapes and rope accent lighting in an alcove above.

Continuing aft on the portside is a vanity with a lift up top, swing out stool and two mirrored cabinet doors above. A 22" LG HDTV is built into a corner cabinet above. On the starboard side is a two door hanging locker with auto light, digital AC controls and a curved door accessing the Forward Head.

Also in the cabin is a large overhead hatch for ventilation or escape, six AC or DC overhead lights, stereo speakers, dedicated lights at the vanity and a carpeted sole.

VIP Head

The VIP Head has a curved lacquered vanity with one storage cabinet below, a molded sink and countertop with two tone faucets, four mirrored cabinet doors above the sink with the center two concealing an opening stainless steel porthole. The toilet is a Head Hunter jet head with a full size bowl. The stall shower has a tinted bi fold door, a teak grate sole and a hand held or wall mountable fixture. Also there is a teak grate seat, two mirrored cabinet doors concealing a stainless steel opening porthole, a light and an exhaust fan.

The Head has a varnished sole and two overhead DC lights.

Starboard Guest Cabin

Entered from the forward end, there are two over under berths on the outboard bulkhead. There are two opening stainless steel portholes above the upper berth and two drawers with rope lighting at the toe kick below the lower berth. Each berth has a reading light and a storage shelf outboard.

Inboard, the lower berth has a two drawer nightstand with an intercom and a Pioneer AM/FM/CD stereo.

At the foot of the berths is a full size hanging locker with auto light.

Further inboard aft is the entrance to the en suite Head. Next forward is a vanity with a swing out stool, a large storage drawer, a Samsung LCD 22" TV on a pivot mount and two storage cabinets above. Also in this cabin is a smoke/CO detector, two overhead AC/DC lights, digital AC controls and a carpeted sole.

Starboard Guest Head

Unique to this layout is a fourth head in the starboard cabin. The vanity has a single cabinet below, a molded sink and countertop with two tone faucets and four mirrored medicine cabinets above. The toilet is a full size Headhunter model. The curtain shower has been removed but could be added back if needed. There is a DC and AC/DC light above as well as a teak grate sole and ample mirrors. Samsung 20" HDTV.

Portside Guest Cabin

The Portside Guest Cabin is entered from the forward end with two twin beds off the aft mirrored bulkhead. Padded head and side boards surround the berths. Each berth has two storage drawers below as well as rope accent lighting. Between the berths is a two door nightstand with light switches, outlets and intercom and a new Insignia 22" HDTV. Each berth has a reading

light. Above the inboard are four storage cabinets. Above the outboard is an alcove with an opening stainless steel porthole, full drawers and accent rope lighting. At the foot of the berth is a full size hanging locker with auto light and two steps up to the Head entrance.

Also in this cabin are two overhead AC DC lights and digital AC controls and stereo speakers.

Guest Head

The Guest Head has two entrances, one from the Centerline Companionway, making it the Day Head as well and one from the Portside Guest Cabin.

The Guest Head has a curved lacquered vanity with one storage cabinet below, a molded sink and countertop with two tone faucets, four mirrored cabinet doors above the sink with the center two concealing an opening stainless steel porthole. The toilet is a Head Hunter jet head with a full size bowl. The stall shower has a tinted bi fold door, a teak grate sole and a hand held or wall mountable fixture. Also there is a teak grate seat, two mirrored cabinet doors concealing a stainless steel opening porthole, a light and an exhaust fan.

The Head has a varnished sole and two DC overhead lights.

Aft Companionway

Leading aft from the port aft corner of the Salon are six carpeted steps with rope lighting. At the bottom of the steps is the insulated door to the Engine Room leading forward and a cabinet with a newly installed Bosch Axxis clothes washer and separate dryer.

Aft is the entrance to the Master Suite. Also in this area is an overhead light and a smoke/CO detector.

Master Cabin

The Master Cabin offers private access via a companionway steps from the portside of the salon and features a centerline king size berth with an upholstered headboard. A 12 panel beveled edge mirror with two brass swing arm lamps, two transom mounted escape hatches with drapes are behind the berth. Above are two reading lights. To the starboard side is a nightstand with intercom, light switches and a 110 volt outlet. Curving to the outboard side is a cabinet with two drawers, a vanity with a hinged top and dedicated lighting and two opening stainless steel portholes, rope accent lighting and full drapes. Next forward is the entrance to the private Head.

On the portside starting aft is a nightstand with the cabin's new Pioneer AM/FM/CD player, two cabinets with four drawers within and a single opening stainless steel porthole with rope accent lighting and full drapes. A 20" Samsung TV/DVD player is built into the bulkhead. Next forward is

a lockable walk in hanging locker with two opening stainless steel portholes and drapes.

On the forward bulkhead is the cabinet's entry door. Next outboard is the entrance to the Head.

Master Head

The vanity has a single cabinet door below with a molded sink with two tone fixtures above. Storage cuddies, an alcove with an opening stainless steel porthole and full drapes are above. Forward is a mirrored medicine cabinet door. The head has a full size Head Hunter jet head. The sole is high gloss varnished teak. The stall shower has a bi fold tinted glass door, a teak grate sole, a handheld or wall mounted fixture, a light and an exhaust fan.

Also in the Head is a dressing mirror two overhead lights and a GFCI outlet.

Crew Cabin

All the way forward is the surprisingly spacious deck access Crew Cabin.

A four step teak and stainless steel ladder leads down from the Foredeck centerline. Either side of the ladder are twin single berths. Above each berth are two storage cabinets forward and an opening stainless steel porthole aft.

Each berth has a reading light and additional storage under the berth.

Aft is the Head with the electric toilet to port and a vanity with storage below the stainless steel sink. The faucet has a hand held shower connection and a shower curtain. The sole of the Head has a teak grate drain panel.

A hanging locker is forward between the berths. Also in this cabin are overhead lights, an intercom and an AC outlet controlled by the VIP Cabin.

Foredeck

Non skid fiberglass sole

Anchor Lift windlass w/up & down footswitches

110 lb. Bruce stainless steel customized anchor w/300' 3/8" chain rode

(2) Fore Deck hatches into anchor locker

Tinted deck hatch into forward Crew Area

Welded stainless steel custom oval bow rail w/lifeline

Welded stainless steel bow pennant staff

(2) Textulene sindshield covers

Stainless steel trimmed windshield

Stainless steel forward side windows w/opening sections

(2) Sets of spring line cleats port & starboard

Walk around side decks w/handrails

International navigation lights

ACR searchlight w/cover

Opening stainless steel side gates port & starboard

(2) Piece Foredeck cushions on bow

Hailer horn facing forward

Freshwater wash down spigot w/hose in anchor locker

Saltwater wash down spigot w/hose in anchor locker

Aft Deck

Teak over fiberglass sole

Solid fiberglass weather boards w/stainless steel oval handrails

Teak oval shaped dining table w/cover

(8) Teak chairs w/removable cushions

Eisenglass dock box to port

42" Skyvue Flatscreen HDTV

Custom waterproof TV cabinet

(2) Docking stations w/clutch & throttle controls, thruster & on/off switches

(4) Overhead stainless steel trimmed lights

(4) Overhead stereo speakers

Aft hailer horn

Large stainless steel trimmed entry door has a push button air operated opening mechanism

Center opening door to passerelle

Stainless steel & teak passerelle (hydraulic) doubles as swim ladder & tender launching crane

Integral swim platform covered w/teak

(2) Hatches in swim platform to store spare props

Hot & cold shower

Freshwater wash down aft

Telephone & cable TV inlets

Twin ladders from Aft Deck to swim platform w/(4) teak steps each

Stereo speaker volume controls

Marquipt six step Tide Ride ladder

Valve to bypass air door so it works manually

(2) Stainless steel rod holders

(6) Teak tread steps to Flybridge (not a ladder)

Shakespeare Sea Watch Terrestrial TV antenna

Lucite panels from Sundeck to arch to keep Aft Deck dry

Aft facing quartz light centerline

110V GFCI outlet

Engine Equipment

All new Cruiseair reverse cycle AC system w/digital controls (5) panels for (2) 12,000 BTU, (2) 7000 BTU compressors

Fireboy Halon 28 lb. built in Engine Room fire system

Hynautic hydraulic steering system w/power assist aft starboard engine

Acoustical & thermal Engine Room insulation

(4) Bilge blowers

Lube oil transfer system

ZF 2:0 to 1 transmission ratio

Raw water sea strainers

Engine & generator fuel shutoff valves

(2) Extra propellers stored in swim platform locker

2 3/4" Stainless steel prop shafts

Microcommander engine synchronizers

Dual Racor 1000 fuel filters w/vacuum gauges

(2) Racor 500 fuel filters for generator w/vacuum gauges

Freshwater cooling system

(6) Automatic/manual bilge pumps

Bennett trim tab system

Tides Marine dripless seals, one new 12/10, one new spare

All AC condensate drain into sumps

Y Valves for heads w/macerator pump

Head Hunter toilet system (4)

AC fluorescent lights

DC fluorescent lights

Site gauges on fuel tanks

Engine block heaters

Shaft bonding brushes

Freshwater wash down spigot w/hose

(2) Engine Room cameras

Electrical Equipment

New Refit includes new injector pump, alternator, starter, raw water pump, motor mounts and fresh water pump.

Northern Lights 20 KW generator in sound shield w/5769 hours - "Mini Refit" on injectors, batteries etc.

12/24 Volt DC electrical system

110/220 Volt AC electrical system

Sentry 12 volt 60 amp battery charger

Sentry 24 volt 40 amp battery charger

All New Batteries and New Charger

(2) 220 Volt 50 amp Glendinning 60' power cords

Isolation & step up transformers to increase low dockside power

Galvanic isolators

DC navigational panel w/(26) breaker protected circuits w/digital volt & amp meters

DC secondary panel w/(32) breaker protected circuits w/digital volt & amp meters

(6) Battery shutoff switches

220V AC panel w/digital volt & amp meters w/ w/(10) breaker protected circuits

110 V AC panel #1 w/(28) breaker protected circuits w/digital volt & amp meters

110V AC panel #2 w/(12) breaker protected circuits w/digital volt & amp meter

Digital AC 220 volt amp & volt meters

Digital AC 110 volt amp & volt meters

Generator start/stop at main panel

Full gauges for generator

(2) DC outlets in Engine Room

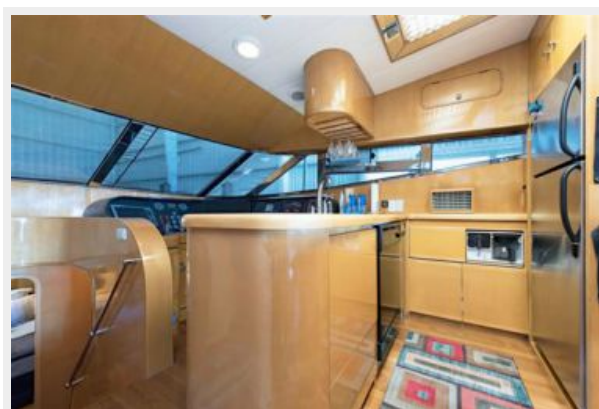
Исключения

При продаже яхты исключаются личные вещи владельца.

Отказ от ответственности

Компания предоставляет описание судна или яхты добросовестно, но не может гарантировать точность этой информации, а также не ручается за техническое состояние. Покупатель должен проинструктировать своих агентов или оценщиков исследовать представленную информацию более подробно, по собственному желанию. Продажа судна или яхты, изменение цены или снятие с продажи будет происходить без предварительного уведомления.

ФОТОГРАФИИ







КОНТАКТЫ

Андрей Шестаков (Andrey Shestakov) – ведущий яхтенный брокер отдела продаж яхт и судов компании Shestakov Yacht Sales Inc. Официальный представитель Shestakov Yacht Sales Inc. для русскоговорящих клиентов в центральном офисе компании в Майами/Форт Лодердейл/Флорида/США.

Контактная информация

Email: andrey@shestakovyachtsales.com

Web: shestakovyachtsales.com

Телефоны

Краснодарский край: **+7(918)465-66-44**

США, Майами, Флорида: **+1(954)274-4435**

Время работы

Понедельник – Суббота: **9:00 - 21:00**
EDT

Воскресенье: **Закрито**

Адрес



Harbour Towne Marina, 850 NE 3rd St,
STE 213, Dania, FL 33004