

## LYRIC — GULFSTAR



**Builder:** GULFSTAR

**Year Built:** 1979

**Model:** Cruising Ketch

**Price:** PRICE ON APPLICATION

**Location:** United States

**LOA:** 47' 0" (14.33m)

**Beam:** 13' 10" (4.22m)

**Max Draft:** 5' 6" (1.68m)

Our experienced yacht broker, Andrey Shestakov, will help you choose and buy a yacht that best suits your needs **LYRIC — GULFSTAR** from our catalogue. Presently, at Shestakov Yacht Sales Inc., we have a wide variety of yachts available on our sale's list. We also work in close contact with all the big yacht manufacturers from all over the world.

If you would like to buy a yacht **LYRIC — GULFSTAR** or would like help answering any questions concerning purchasing, selling or chartering a yacht, please call **+1(954)274-4435**

---

# TABLE OF CONTENTS

---

TABLE OF CONTENTS	2
SPECIFICATIONS	3
Overview	3
Basic Information	3
Dimensions	3
Speed, Capacities and Weight	3
Accommodations	4
Hull and Deck Information	4
DETAILED INFORMATION	5
Notable Exterior Features	5
Accommodations	5
Galley	5
Electronics	5
Sails and Rigging	6
Engine room and mechanical features	6
Electrical Features	6
Misc. features	6
Exclusions	7
Disclaimer	7
PHOTOS	8
CONTACTS	14
Contact details	14
Telephones	14
Office hours	14
Address	14

---

# SPECIFICATIONS

---

## Overview

---

Lyric is a cruising ready sailboat that you can have confidence in. She is a well built model of 1979 when more of everything and attention to detail was the standard. She has been cruising on and off with the current owners for 7 years and is a splendid yacht of substance. Lyric is suitable for the seasonable cruiser. Stout and stable you can rest well on the hook in any weather or at sea with 4 to 5 she handles gracefully. However with all her enhancements and Gulfstar lineage, she is a vessel to comfortably satisfy the passion for those who wish to live aboard, as the owners have from time to time over the past 7 years. She is a sail boat for that passionate sailor who wants comfort.

## Basic Information

---

**Category:** Cruising Ketch

**Model Year:** 1979

**Year Built:** 1979

**Country:** United States

## Dimensions

---

**LOA:** 47' 0" (14.33m)

**LWL:** 40' 6" (12.34m)

**Beam:** 13' 10" (4.22m)

**Max Draft:** 5' 6" (1.68m)

**MFG Length:** 47' 0" (14.33m)

## Speed, Capacities and Weight

---

**Displacement:** 38000 Pounds

**Water Capacity:** 350 Gallons

**Holding Tank:** 50 Gallons

**Fuel Capacity:** 195 Gallons

---

## Accommodations

---

**Total Cabins:** 2

**Total Berths:** 4

**Total Heads:** 2

---

## Hull and Deck Information

---

**Hull Material:** Fiberglass

---

## DETAILED INFORMATION

---

### Notable Exterior Features

---

- Dodger & bimini with full isinglass enclosure plus screen enclosure
- 6 Man EV liferaft - aprox 4 years old
- Lofrans 1200 watt windlass
- 66 lb Bruce anchor with 200chain rode
- Delta plow anchor with 325' ode
- Third Danforth anhor
- Vetus bow thruster with 8D AGM battery
- Stern mounted SS dinghy davits
- 4 Large Taylor fenders in holders
- Standard Coast Guard safety equipment

### Accommodations

---

Large master centerline double berth Large salon settee port & starboard Galley down to port Large double V berth Master head seperate shower Nav station aft salon Head shower across from galley

### Galley

---

- Vitrifrigo upright dual voltage 8 CF refrigerator / freezer
- Summit cube freezer
- LG microwave oven
- Force 10 3 burner propane stove with oven
- 2 10lb propane tanks in external locker
- Force 10 Stainless steel propane grill
- 12 Gallon water heater
- 4 Hella fans
- Two 8D AGM house batteries, AGM start battery and AGM generator start battery

### Electronics

---

- Standard Horizon CP180i Color GPS plotter w/current charts
- Standard Horizon VHF radio w/RAM mic and AIS receiver
- B & G Network autopilot
- Garmin GMI 10 display w/depth speed & temp
- Furuno 1623 Mono-LCD 12 mile radar

- Datamarine depth & wind
- Danforth Constellation Compass
- Garmin 225 Backup GPS
- HP Windows 7 PC linked to GPS, Mast mounted long range WIFI
- Icom IC-M700 SSB radio w/antenna tuner and backstay antenna
- Two HD LCD TVs w/mast antenna
- Dual Marine stereo in cockpit
- 4 Channel Kinter stereo in salon

---

## Sails and Rigging

---

- Forespar EZ\_Furl roller furling main
- Harken roller furling headsail
- Telescoping spinnaker pole on mast mount
- Doyle mainsail
- Doyle 150 genoa
- Hood mizzen sail
- Asymmetrical spinnaker

---

## Engine room and mechanical features

---

- 140 hp American Diesel (Ford Lehman) with 2,175 reported hours
- Northern Lights 8 KW generator
- FCI 500 gal/day reverse osmosis water maker
- Two 16,000 BTU Cruise-air reverse cycle air conditioners
- Engine room fire suppression system
- Lasdrop dripless shaft seal

---

## Electrical Features

---

- 8kw Northern Lights Generator in sound shield
- Heart Freedom 25 Inverter / Charger
- Promariner 1240i plus battery charger
- Two 80 Watt solar panels with controller
- 8D batteries in two banks

---

## Misc. features

---

- West Marine /Avon 10' RIB with 15hp 4 stroke Mercury OB

---

## Exclusions

---

Owner's personal belongings.

---

## Disclaimer

---

The Company offers the details of this vessel or yacht in good faith but cannot guarantee or warrant the accuracy of this information nor warrant the condition of the vessel. A buyer should instruct his representatives, agents, or his surveyors, to investigate such details as the buyer desires validated. This vessel or yacht is offered subject to prior sale, price change, or withdrawal without notice.

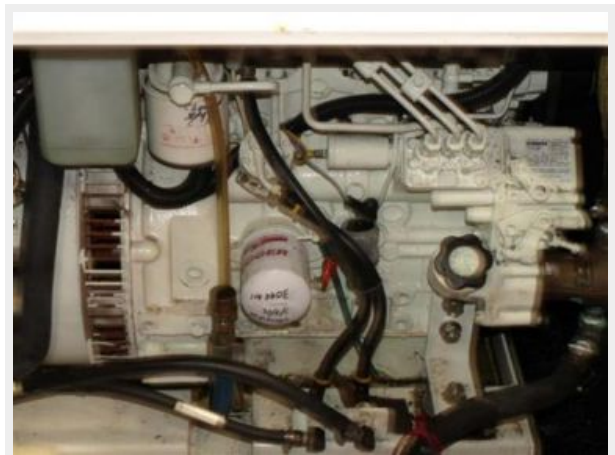
# PHOTOS

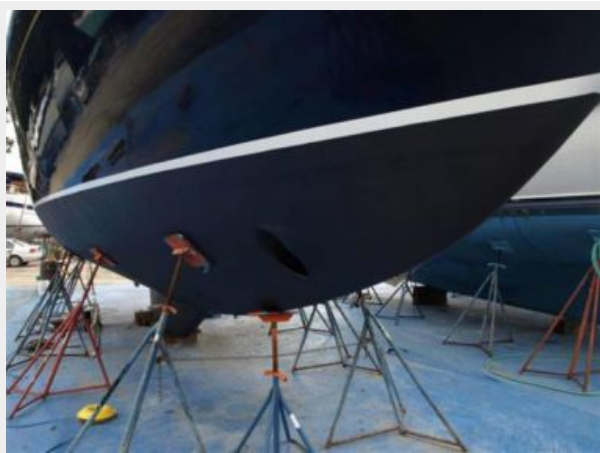












**GULFSTAR SAILMASTER**

A CRUISING SAILBOAT FOR THE DISCRIMINATING YACHTSMAN WHO DEMANDS QUALITY, COMFORT AND PERFORMANCE.

**47**

SEE THE SAILMASTER 47 AT THE FOLLOWING FALL BOAT SHOWS:

- Bahia Mar Boat Show (Fort Lauderdale), November 2-6
- St. Petersburg Boat Show, December 1-4

The GULFSTAR SAILMASTER is not a run-of-the-mill sailboat. She is a true cruising sailboat, designed for the discriminating yachtman who demands quality, comfort and performance. She is a true cruising sailboat, designed for the discriminating yachtman who demands quality, comfort and performance. She is a true cruising sailboat, designed for the discriminating yachtman who demands quality, comfort and performance.

SEE THE SAILMASTER 47 AT THE FOLLOWING FALL BOAT SHOWS:

- Bahia Mar Boat Show (Fort Lauderdale), November 2-6
- St. Petersburg Boat Show, December 1-4

**Gulf Star**

THE WORLD'S FINEST QUALITY PICKERSON YACHTS

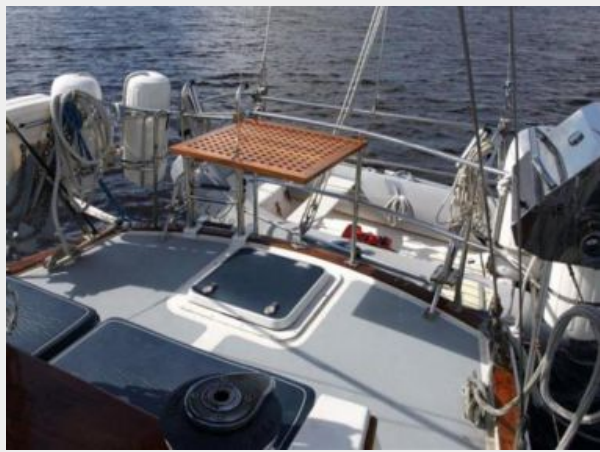
**SPECIFICATIONS**

LOA	47' 0"
BEAM	13' 0"
DRAFT	6' 0"
HEIGHT OF MAIN DECK OVERHUNG	54" 0"
DISPLACEMENT	28,000 LBS.
BURRLE LEVEL	15.000 HRS.
SEA TRUNK ENGINE	800 HP 4
FUEL TANK CAPACITY	100 GALS.
FUEL CONSUMPTION	20 GPH
SEA SPEED	20 KTS.
MAXIMUM CRUISING SPEED	18 KTS.

**GULFSTAR**

**47**

**SAILMASTER**



# CONTACTS

---

Andrey Shestakov, leading yacht broker of the sales department of Shestakov Yacht Sales Inc. Shestakov Yacht Sales Inc., the official representative of the Miami/Fort Lauderdale FL headquarters.

## Contact details

---

Email: [andrey@shestakovyachtsales.com](mailto:andrey@shestakovyachtsales.com)

Web: [shestakovyachtsales.com/en/](http://shestakovyachtsales.com/en/)

## Telephones

---

USA: +1(954)274-4435

## Office hours

---

Monday – Saturday: **9:00 - 21:00** EDT

Sunday: **closed**

## Address

---



Harbour Towne Marina, 850 NE 3rd St,  
STE 213, Dania, FL 33004