

BAGLIETTO 118' — BAGLIETTO



Builder: BAGLIETTO

Year Built: 1988

Model: Motor Yacht

Price: PRICE ON APPLICATION

Location: Greece

LOA: 124' 9" (38mm)

Beam: 24.93

Max Draft: 5' 3" (1.6mm)

Cruise Speed: 22 Knots Kts. (25 MPH)

Max Speed: 25 Knots Kts. (29 MPH)

Our experienced yacht broker, Andrey Shestakov, will help you choose and buy a yacht that best suits your needs **BAGLIETTO 118' — BAGLIETTO** from our catalogue. Presently, at Shestakov Yacht Sales Inc., we have a wide variety of yachts available on our sale's list. We also work in close contact with all the big yacht manufacturers from all over the world.

If you would like to buy a yacht **BAGLIETTO 118' — BAGLIETTO** or would like help answering any questions concerning purchasing, selling or chartering a yacht, please call **+1(954)274-4435**

TABLE OF CONTENTS

TABLE OF CONTENTS	2
SPECIFICATIONS	3
Overview	3
Basic Information	3
Dimensions	3
Speed, Capacities and Weight	4
Accommodations	4
Hull and Deck Information	4
Engine Information	4
PHOTOS	5
IMG_4224	5
IMG_4136	5
IMG_4143	5
IMG_4140	5
IMG_4165	5
IMG_4164	5
IMG_4159	6
IMG_4139	6
DSC06121	6
DSC06125	6
IMG_E4195	6
CONTACTS	7
Contact details	7
Telephones	7
Office hours	7
Address	7

SPECIFICATIONS

Overview

An exceptional condition Baglietto 36m with intensively refitted / upgraded Interior in 2018

Very warm and welcoming interior with light wood colors

She can accommodate up to 9 guests in 4 double cabins all with en-suite facilities, her fourth cabin is located on the main deck.

she is a Strictly Private yacht and has never Been chartered

she is fitted with two MTU 2470Hp each, Model 12V396TB94, KAMEWA - Jet Propulsion

Main Engines have been overhauled (W5 Plus) in 2012 The yacht has below 350hrs of cruise since Overhaul

she can comfortably cruise at the speed of 22 knots and can reach a top speed of 27 knots.

Her economic speed is at 17 knots with consumption of about 550l/hr

A Must To Be Seen Yacht

Please contact us to set a viewing onboard

Best Priced Baglietto 36M on the market

Basic Information

Category: Motor Yacht

Sub Category: Flybridge

Model Year: 1988

Year Built: 1988

Country: Greece

Dimensions

LOA: 124' 9" (38mm)

Beam: 24.93

Max Draft: 5' 3" (1.6mm)

Speed, Capacities and Weight

Cruise Speed: 22 Knots Kts. (25 MPH)

Max Speed: 25 Knots Kts. (29 MPH)

Gross Tonnage: 207 Pounds

Water Capacity: 6000 Gallons

Fuel Capacity: 8453.51 Gal Gallons

Accommodations

Total Cabins: 4

Sleeps: 8

Total Heads: 4

Crew Cabin: 6

Hull and Deck Information

Hull Material: Aluminum

Hull Color: BLUE BLACK

Engine Information

Engines: 2

Manufacturer: MTU

Engine Type: Inboard

Fuel Type: Diesel

PHOTOS

IMG_4224



IMG_4136



IMG_4143



IMG_4140



IMG_4165



IMG_4164



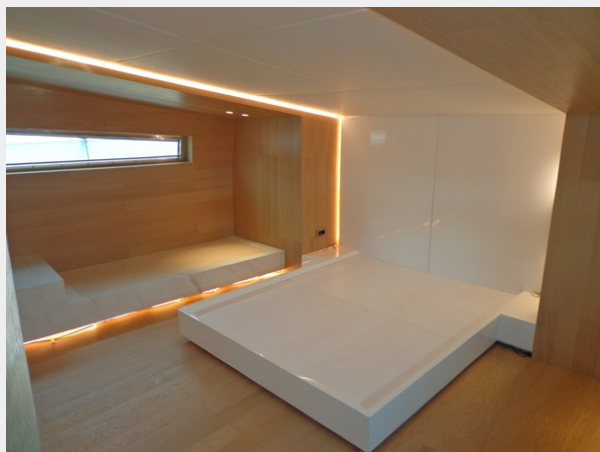
IMG_4159



IMG_4139



DSC06121



DSC06125



IMG_E4195



CONTACTS

Andrey Shestakov, leading yacht broker of the sales department of Shestakov Yacht Sales Inc. Shestakov Yacht Sales Inc., the official representative of the Miami/Fort Lauderdale FL headquarters.

Contact details

Email: andrey@shestakovyachtsales.com

Web: shestakovyachtsales.com/en/

Telephones

USA: +1(954)274-4435

Office hours

Monday – Saturday: **9:00 - 21:00** EDT

Sunday: **closed**

Address



Harbour Towne Marina, 850 NE 3rd St,
STE 213, Dania, FL 33004