

UNDER OFFER! 2005 AZIMUT 116 @ AVENT — AZIMUT



Builder: AZIMUT

Year Built: 2005

Model: Motor Yacht

Price: PRICE ON APPLICATION

Location: United States

LOA: 116' 0" (35.36m)

Beam: 24' 3" (7.39m)

Max Draft: 5' 8" (1.73m)

Cruise Speed: 25 Kts. (29 MPH)

Max Speed: 28 Kts. (32 MPH)

Our experienced yacht broker, Andrey Shestakov, will help you choose and buy a yacht that best suits your needs under offer! 2005 Azimut 116 @ Aventura FL- ABIE — AZIMUT from our catalogue. Presently, at Shestakov Yacht Sales Inc., we have a wide variety of yachts available on our sale's list. We also work in close contact with all the big yacht manufacturers from all over the world.

If you would like to buy a yacht under offer! 2005 Azimut 116 @ Aventura FL- ABIE — AZIMUT or would like help answering any questions concerning purchasing, selling or chartering a yacht, please call +1(954)274-4435

TABLE OF CONTENTS

TABLE OF CONTENTS	2
SPECIFICATIONS	3
Overview	3
Basic Information	3
Dimensions	3
Speed, Capacities and Weight	3
Accommodations	4
Hull and Deck Information	4
Engine Information	4
DETAILED INFORMATION	5
Introduction	5
Exclusions	5
Disclaimer	5
PHOTOS	6
CONTACTS	23
Contact details	23
Telephones	23
Office hours	23
Address	23

SPECIFICATIONS

Overview

m/y ABIE: sleeps up to 14 Owner/Guests which include a luxurious Master Stateroom, (2) VIP staterooms, (2) Guest staterooms with twin beds and pullman berth on the Lower Deck PLUS a Media/Guest Room on the Main Deck can be used as the 6 cabin, M.Room comes with full head (2 doors to convert in private areas head and room. (2) Generators: 10,000 hours @ March 2018. ** NIAD STABILIZERS** HULL # 16

Basic Information

Category: Motor Yacht

Sub Category: Flybridge

Model Year: 2005

Year Built: 2005

Country: United States

Vessel Top: Hardtop

Fly Bridge: Yes

Cockpit: Yes

Dimensions

LOA: 116' 0" (35.36m)

Beam: 24' 3" (7.39m)

Max Draft: 5' 8" (1.73m)

Speed, Capacities and Weight

Cruise Speed: 25 Kts. (29 MPH)

Max Speed: 28 Kts. (32 MPH)

Gross Tonnage: 143 Pounds

Water Capacity: 2800 Gallons

Fuel Capacity: 4700 Gallons

Accommodations

Total Cabins: 5

Sleeps: 14

Total Heads: 6

Captain Cabin: True

Crew Cabin: 3

Crew Berths: 5

Crew Sleeps: 6

Crew Heads: 3

Hull and Deck Information

Hull Material: Fiberglass

Exterior Designer: Stefano Righini

Interior Designer: Carlo Galeazzi

Engine Information

Engines: 2

Manufacturer: MTU

Model: 16V2000 M91

Engine Type: Inboard

Fuel Type: Diesel

DETAILED INFORMATION

Introduction

All photos and video are recent and accurate. Abie is a gorgeous, captain maintained 6 stateroom vessel that accommodates up to 14 Owners/Guests. There are 5 Owner/Guest Staterooms on the lower deck consisting of a Master Stateroom aft, (2) VIP staterooms midship, and (2) Guest Twin Staterooms with Pullman berths forward. The Media Room on the Main Deck sleeps 2. In addition, there are 3 crew staterooms which sleep up to 5 crew. **Galley** 2X GE Profile Ovens Kitchen Aide Trash Compactor New Ventilation Fan 5 Burner Miele Induction Stove 2 Basin Sink Frigidaire washer dryer **Salon** Wine cooler Isotherm Refrigerator Isotherm Icemaker 46" TV Samsung **Upper Helm** New Eisenglass enclosure Zenth Compass Raymarine E120 Trac control panel Raymarine ST290 Rudder indicator (2) Raymarine ST290 Display Raymarine ST290 AP Raymarine 240 VHF American Bow thruster control **Lower Helm** Sony XPod DriveS Raymarine RL80C Pathfinder HD Envy 4500 XM Ready2 MTU Electronics Displays 2x Intav Spotlight Raymarine ST290 Autopilot (Keyboard) On CLNL SL + SM Link Keyword New Acer Screen + ProFace Screen Raymarine RL80C Trac Stabilizers White Star Compass CAME Security Cameras (2) NERA F77 Distress **Fly Bridge** New Isotherm Refrigerator Scotsman ice maker Sink Shower Hot tub Grill (2) Expandable sun roof August 2015 **Aft Deck** New 32' Vizio on Aft deck New icemaker on aft deck (Isotherm) Aft deck table refurbished in 2014 Fly bridge bar Tables BBQ Top Exterior soft goods in 2014 Aft deck and stairway covers (2) 2 person Waverunner Bombardier Spark 15' AB Tender 65 HP Yamaha 50 Hours **Electrical Equipment** Twin 80 kw Kohler 80 EOZ Generators, Spec. No. GM 24463 - GA8 As of December.13th, 2016, 9192 hrs on port and 98978 on starboard. Water Maker The Company offers the details of this vessel in good faith but cannot guarantee or warrant the accuracy of this information nor warrant the condition of the vessel. A buyer should instruct his agents, or his surveyors, to investigate such details as the buyer desires validated. This vessel is offered subject to prior sale, price change, or withdrawal without notice.

Exclusions

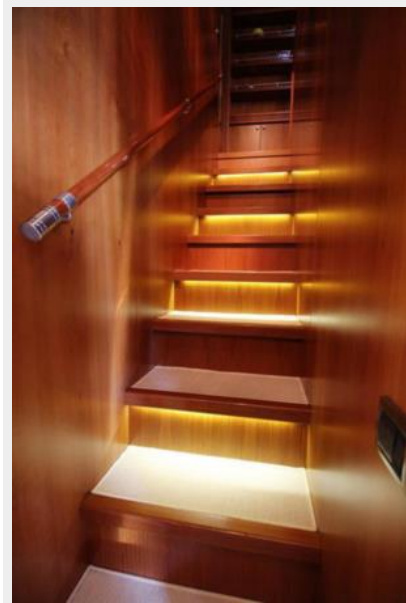
Owner's personal belongings.

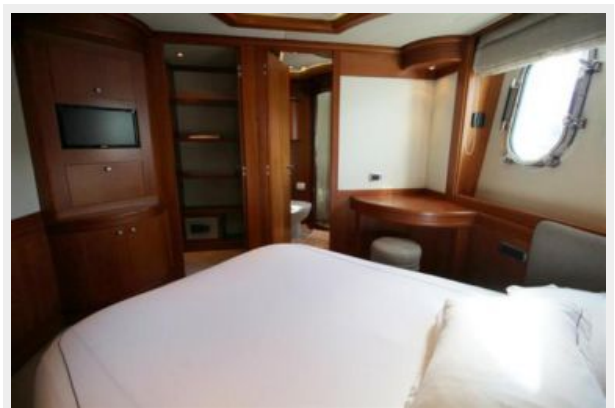
Disclaimer

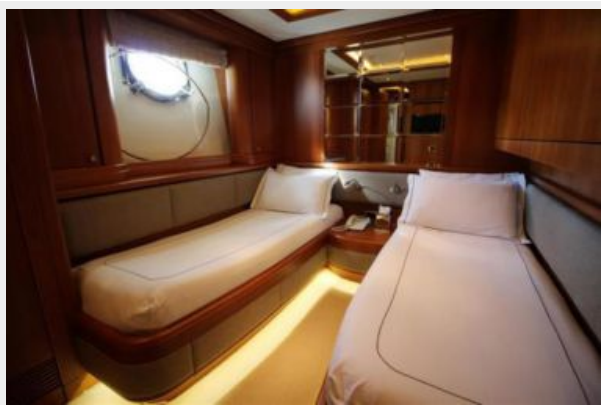
The Company offers the details of this vessel or yacht in good faith but cannot guarantee or warrant the accuracy of this information nor warrant the condition of the vessel. A buyer should instruct his representatives, agents, or his surveyors, to investigate such details as the buyer desires validated. This vessel or yacht is offered subject to prior sale, price change, or withdrawal without notice.

PHOTOS

















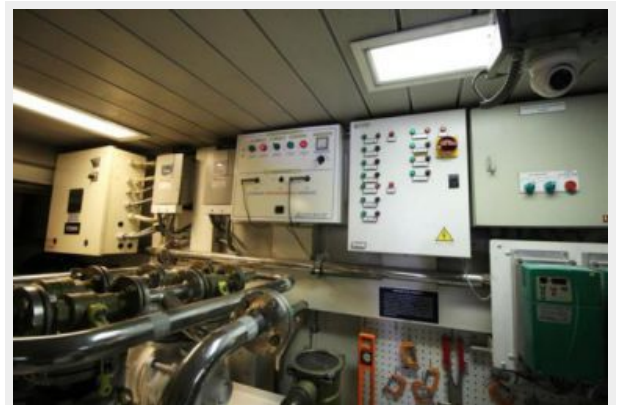


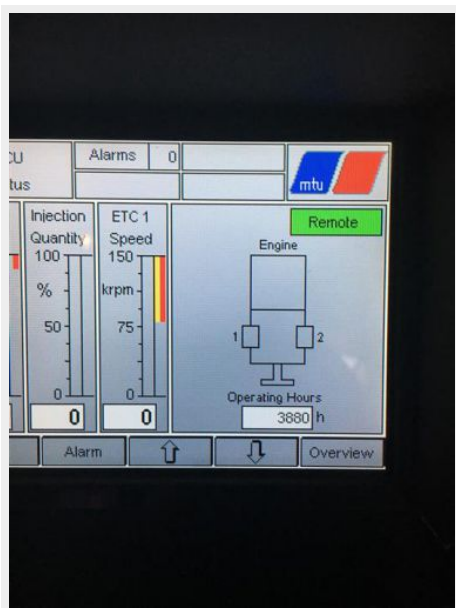
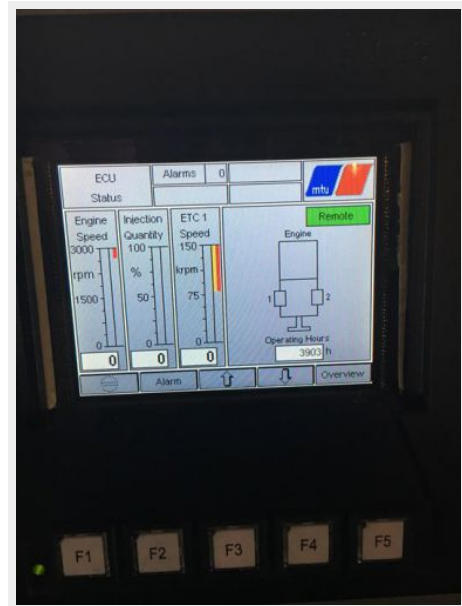




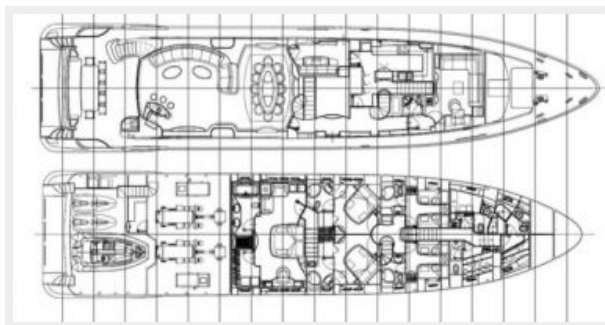
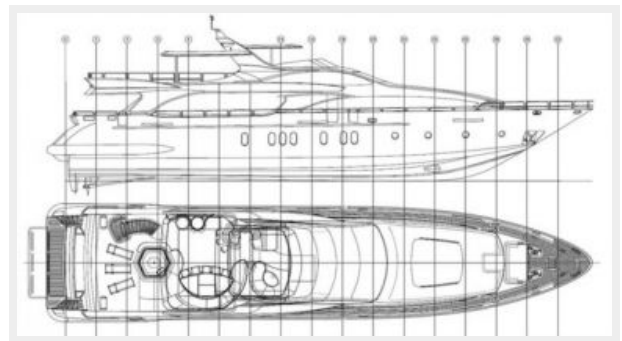












CONTACTS

Andrey Shestakov, leading yacht broker of the sales department of Shestakov Yacht Sales Inc. Shestakov Yacht Sales Inc., the official representative of the Miami/Fort Lauderdale FL headquarters.

Contact details

Email: andrey@shestakovyachtsales.com

Web: shestakovyachtsales.com/en/

Telephones

USA: +1(954)274-4435

Office hours

Monday – Saturday: **9:00 - 21:00** EDT

Sunday: **closed**

Address



Harbour Towne Marina, 850 NE 3rd St,
STE 213, Dania, FL 33004