

## 2013 SEA RAY 450 SUNDANCER BAILEY GIRL — SEA RAY



**Builder:** SEA RAY

**Year Built:** 2013

**Model:** Motor Yacht

**Price:** PRICE ON APPLICATION

**Location:** United States

**LOA:** 45' 0" (13.72m)

**Beam:** 13' 2" (4.01m)

**Min Draft:** 3' 8" (1.12m)

**Max Draft:** 3' 8" (1.12m)

**Cruise Speed:** 9 Kts. (10 MPH)

Our experienced yacht broker, Andrey Shestakov, will help you choose and buy a yacht that best suits your needs 2013 Sea Ray 450 Sundancer BAILEY GIRL — SEA RAY from our catalogue. Presently, at Shestakov Yacht Sales Inc., we have a wide variety of yachts available on our sale's list. We also work in close contact with all the big yacht manufacturers from all over the world.

If you would like to buy a yacht 2013 Sea Ray 450 Sundancer BAILEY GIRL — SEA RAY or would like help answering any questions concerning purchasing, selling or chartering a yacht, please call +1(954)274-4435

# TABLE OF CONTENTS

|                              |    |
|------------------------------|----|
| TABLE OF CONTENTS            | 2  |
| SPECIFICATIONS               | 4  |
| Overview                     | 4  |
| Basic Information            | 4  |
| Dimensions                   | 4  |
| Speed, Capacities and Weight | 4  |
| Accommodations               | 4  |
| Hull and Deck Information    | 4  |
| Engine Information           | 5  |
| DETAILED INFORMATION         | 6  |
| Options                      | 6  |
| Hull and Deck Features       | 6  |
| Cockpit Features             | 7  |
| Cabin Features               | 8  |
| Salon                        | 8  |
| Galley                       | 8  |
| Mid Stateroom/Media Room     | 9  |
| Forward Stateroom            | 9  |
| Forward Stateroom Head       | 9  |
| Guest Head/ Shower           | 10 |
| Technical Features           | 10 |
| Exclusions                   | 12 |
| Disclaimer                   | 12 |
| PHOTOS                       | 13 |
| CONTACTS                     | 15 |
| Contact details              | 15 |
| Telephones                   | 15 |
| Office hours                 | 15 |

|         |    |
|---------|----|
| Address | 15 |
|---------|----|

# SPECIFICATIONS

## Overview

Features Upgraded Twin CUMMINS ZEUS 480 Engines

Only 280 Hrs   Extended Warranty   Fresh Bottom Paint   Upgraded Interior Decor   Upgraded Entertainment System   Underwater Transom Lighting

## Basic Information

**Category:** Motor Yacht

**Model Year:** 2013

**Year Built:** 2013

**Country:** United States

**Vessel Top:** Hardtop

## Dimensions

**LOA:** 45' 0" (13.72m)

**Beam:** 13' 2" (4.01m)

**Min Draft:** 3' 8" (1.12m)

**Max Draft:** 3' 8" (1.12m)

## Speed, Capacities and Weight

**Cruise Speed:** 9 Kts. (10 MPH)

## Accommodations

**Total Cabins:** 2

## Hull and Deck Information

**Hull Material:** Fiberglass

## Engine Information

---

**Engines:** 2

**Manufacturer:** Cummins

**Model:** CMD QSB ZEUS 480

**Engine Type:** Inboard

**Fuel Type:** Diesel

---

## DETAILED INFORMATION

---

### Options

---

- CUMMINS ZEUS 480 CMD QSB
- White Gel Coat
- Black Canvas
- PKG. A Tan/ Chocolate/ Caramel
- INT. PKG. A. Dark Cherry High Gloss
- INT. PKG. A. Light Carpet
- PKG A Wood Flooring - Salon and Galley
- Vacuum System, Central
- Macerator w/ Seacock Interlock System
- Sun Pad Forward Deck w/ Backrest
- Dash Cover Canvas
- Spotlight With Dual Halogen Bulbs
- Cockpit Air/ Heat w/ Defroster
- Cockpit Refrigerator Dual Volt
- LCD TV/DVD - Cockpit
- Lighting, Underwater Transom
- Yacht Flag and Flag Pole
- Raymarine E125W Chart Plotter / GPS/ Radar

### Hull and Deck Features

---

- Bottom Paint
- Bow Rail, 316 Stainless Steel w/Welded Stanchions,
- Intermediate Rails & Life Lines
- Cleats, Custom Sea Ray® Thru-Bolted - Stainless Steel (8)
- Deck Fill Plates, Stainless Steel
- Deck Rails, 316 Stainless Steel
- Drain Plug, Brass-Threaded - Garboard
- Gel Coat - Arctic White
- Graphics, Striping
- Graphics, Transom Numerator
- Handrails, 316 Stainless Steel
- Hatch, Deck Vent - Translucent w/Locks & Sky Screen Covers (Trapezoid)
- Hull Windows, Custom Molded-In
- Lights, Navigation
- Resin, High-Performance Vinylester
- Rub Rail, PVC w/Stainless-Steel Insert
- Storage, Transom (For Fenders & Gear) w/Gas Assist

- Stringer System, Foam & Fiberglass
- Swim Platform w/Concealed Stainless-Steel Four-Step Swim Ladder w/Integral Grab Handle
- Thru-Hull Fittings, Stainless Steel
- Toe Rail, Molded Fiberglass - Deck
- Vent System, Engine Room, Stainless Steel
- Windshield, Tempered/Tinted Curved Glass Bonded In w/ Electric Front Vent
- Windshield Washer System
- Windshield Wipers w/Delay & Speed Control
- **Canvas (sunbrella®)** Canvas Colors - Blue, Black or Taupe Aft Curtain w/Bungee Cords
- **Certifications:** Meets Applicable USCG & ABYC Standards Mercury Installation Quality Certification (Gas Engines) NMMA Certification
- **Mooring system:** Anchor, Galvanized Anchor Chute, Stainless Steel Anchor Rope/Chain Storage w/Gas-Assisted Hatch Windlass, Rope/Chain w/Foot Switches

## Cockpit Features

---

- Beverage Holders (6)
- Carpet Liner, Snap-In
- Cooler, Carry-On w/Designated Storage
- Door, Cabin Entry (Sliding & Lockable) w/Skylight
- Door, Transom w/Stainless-Steel Frame & Arctic Insert
- Floor Liner, Fiberglass - Self-Bailing
- Handrails, 316 Stainless Steel
- Hardtop, Fiberglass w/Retractable Sunroof, Overhead Lighting
- Hatch, Engine Room - Electrically Actuated
- Ice Bucket, Insulated - Built-In Icemaker, 120V
- Lighting, LED - White
- Outlet, 12V Accessory
- Outlet, 120V GFI Protected
- Rod Holders (2)
- Seating, Double-Wide Helm w/Flip-Up Thigh-Rise Bolster, Armrests, Heavy-Duty Pedestal w/Slide & Pneumatic Vertical Adjustment
- Seating, Port Double-Wide w/Flip-Up Thigh-Rise Bolster, Armrest & Fiberglass Storage Base
- Seating, Aft - U-Shaped w/Storage Below
- Steps, Molded - Deck Access
- Stereo - Amplifier, 10" Subwoofer, Digital Cockpit Remote Control & Speakers (4)
- Storage, Side Panel - Port & Starboard
- Sun Pad, Cockpit w/Storage Below
- Table, Cockpit - Fiberglass w/ Dedicated Storage
- Wet Bar w/Sink, Faucet, Solid-Surface Countertop,
- Stainless-Steel Handrail, Trash Receptacle & Storage

- Cabinet - Starboard

---

## Cabin Features

---

- Blinds, Silver Alloy
- Carbon Monoxide Monitors
- Carpet, 55-Ounce, 100% Stainmaster® BCF Nylon w/ Dupont® Advanced Teflon Repel System
- Carpet Runners, Interior (Sunbrella)
- Curtains & Drape Trim
- Flooring, Carpet
- Flooring, Wood - V-Berth
- Handrails, Stainless Steel
- Lighting, White - LED
- Outlet & Switch Plates - Polished Chrome Finish
- Outlet, Phone
- Outlets, 12V Accessory
- Outlets, 120V GFI Protected
- Pillows, Accent
- Steps, Entryway - Wood w/Stainless-Steel Handrail
- Wood Interior Finish

---

## Salon

---

- Seating, L-Shaped Sofa w/Storage Below - Converts to Bed w/Filler Cushions (Ultraleather)
- Stereo, iPod® Interface Port w/Docking Station
- Stereo, Sony® 12V AM/FM Single CD, Sirius® Satellite
- Receiver w/Antenna, Amplifier, Subwoofer, Speakers (4 cabin, 4 cockpit), Digital Cockpit Remote Control & Speaker Selector Switches
- Storage, Gunwale Cabinets
- Storage, In-Floor
- Table, Dinette w/High-Gloss Wood Surface & Dedicated Storage

---

## Galley

---

- Coffeemaker, 120V
- Countertop, Solid Surface w/Sink, Single-Lever Faucet & Sink Cover
- Handrail, Stainless Steel
- Microwave w/Stainless-Steel Front - 120V
- Power Vent, 12V w/Stainless-Steel Grill



- Refrigerator/Freezer w/Stainless-Steel Front - Dual Voltage
- Storage, Drawers w/Cutlery Insert
- Storage, Upper & Lower w/Designated Plate & Glass Storage
- Stove, Two-Burner (Recessed) w/Solid-Surface Cover - 120V
- Trash Receptacle

---

## Mid Stateroom/Media Room

---

- Curtain, Privacy w/Dedicated Storage
- Entertainment System: - TV, 40" Flatscreen w/DVD Player & Gaming System Port - Surround Sound Audio (1 TV, 1 Bose® 3-2-1) - Audio/DVD Player (Media Room)
- Hanging Locker w/Light - Port & Starboard
- Lighting, Blue LED Accent
- Ottomans, (2) Movable w/Dual-Purpose Tops (Cushions or Cocktail Tables) & Storage Below
- Seating, Conversation Pit - Converts to Double Berth w/ Slide-Out Base (Ultraleather™)
- Storage, Cabinet - Starboard

---

## Forward Stateroom

---

- Bed, Full-Size Island-Style w/Mattress, Electrically Actuated
- Extension & Posturepedic® Backrest w/Visco Elastic Foam Mattress & Drawer Storage Below
- Decorative Rope Locker Bulkhead w/Accent Lighting
- Door, Privacy - Handcrafted Solid Wood w/Translucent Screens
- Flooring, Wood
- Linens - Pillows, Sheets & Coordinated Spread
- Lighting, Task - 12V, Port & Starboard (at Head of Bed)
- Storage, Gunwale Cabinets - Port & Starboard
- Storage, Hanging Lockers (2) - Port & Starboard
- TV, 19" Flatscreen w/DVD Player

---

## Forward Stateroom Head

---

- Bathroom Tissue Holder
- Door, Privacy - Access from Forward Stateroom & Salon
- Floors, Tile
- Handrails, Stainless-Steel
- Head, VacuFlush®
- Power Vent, 12V w/Stainless-Steel Grill
- Robe Hook

- Speakers (2)
- Storage Drawers - Under Bed (2)
- Storage, Gunwale Cabinet - Mirrored
- Towel Bar
- Towels - Sea Ray
- Vanity w/Solid-Surface Countertop, Sink, Faucet & Storage Below

## Guest Head/ Shower

---

- Forward shower (port):
- Curtain, Shower
- Door, Privacy - Access from Forward Stateroom
- Floors, Tile
- Handrails, Stainless Steel
- Robe Hook
- Shower w/Seat, Adjustable Shower Wand & Dedicated Shampoo Bottle Storage
- Storage, Gunwale Cabinet

## Technical Features

---

### Air conditioning/heating:

- Cabin, Zone-Controlled Reverse-Cycle System (24,000 BTU)
- Custom Integral Vent System

### Control station:

- Alarms, High-Water - Bilge & Cabin
- Battery Parallel Switch - Engines
- Compass
- Dash, Gel Coated
- Horns, Air (Concealed) - Dual Trumpet
- Instrument Panel, High-Gloss
- Joystick Control, Axis® or Optional Zeus®
- Power Steering, Hydraulic w/Wood Accent Isotta® Tilt Wheel
- Shift & Throttle Controls - Electronic (MerCruiser® DTS)
- SmartCraft® Diagnostics: - Instrumentation, Custom Sea Ray® SmartCraft w/LowGlare
- Blue Night Lighting & Chrome Bezels - 4-in-1 Multigauges (2) (Includes: Fuel Level, Oil Pressure, Voltmeter & Water Temperature) - Tachometers (2)
- SmartCraft VesselView Display: - Propulsion: Engine Hour Meters, Engine Status, Performance & Fuel, Peak Performance, Boost Pressure (Optional), Troll Control & Cruise Control - Vessel: Vessel Status, Tank Status, Steering Position &
- Generator Data

---

**Electrical systems:**

- Batteries w/Trays (4)
- Battery Charger/Converter, 120V/40 Amp/12V
- Battery Switches, 2-Way Solenoid Activated (MDP & Bilge)
- Cable TV System w/Inlet (Includes Phone Inlet), TV & Phone Shore Cords, Coax Outlets, Gain Control & Omni Directional Antenna
- Galvanic Isolators (2)
- Shore Power Transformer, 240V/50 Amp/60 Cycle/12Kva Panel, DC Circuit Breaker - Remote
- Panel, DC Main Breaker
- Panel, Main Distribution - AC/DC
- Shore Power, CableMaster™, 240V/50 Amp/60 Cycle w/75' Cord
- Wiring, Color-Coded w/Chafe Protection

**Electronics:**

- Autopilot, Integrated w/Axius or Optional Zeus System (Waypoint Control Requires Chartplotter)
- Electronics Circuit, 12V/50 Amp
- VHF Radio w/Remote Speaker & 8' Fiberglass Antenna

**Engine room:**

- Bilge Pumps, 12V Automatic (2)
- Bilge Pumps, 12V Automatic High-Water (1 Bilge, 1 Cabin)
- Blowers, 12V Bilge (2)
- Fire Suppression System - Automatic w/Manual Pull
- Gel-Coated Engine Room
- Ladder, Stainless Steel - Removable
- Lighting, 12V - Engine Room

**Fuel system:**

- Fuel Filters, Remote (Racor® Filters for Diesel Engines)
- Fuel Lines, USCG - Type A-1
- Fuel Tanks, Aluminum w/Electric Shutoff Valves (Manual Valves for Diesel) & Ultrasonic Sending Units
- Fuel Transfer Pump, Electric (Available Only w/Diesel Engines) 450 SUNDANCER®

**Generator:**

- 10 kW Kohler® Low CO - Gas, 120V/60 Cycle w/Sound
- Shield, Remote Start, Muffler, Closed Cooling, Seacock & Seawater Strainer & SmartCraft® Interfacing

**Underwater gear:**

- Propellers, Stainless Steel
- Seacocks (On All Underwater Fittings)
- Seawater Strainers
- Trim Tabs, Hydraulic (Integrated w/ Zeus® System When Selected)

**Waste system:**

- Head System, VacuFlush®
- Holding Tank Level Indicators - MDP & Head
- Holding Tank w/Dockside Pump-Out
- Sump Box w/Pump - Automatic

**Water system:**

- Freshwater Washdown Spigots - Transom & Engine Room
- Manifold System w/Shutoff Valves
- Pressure Water System w/12V Pump & Charcoal Filtration System
- Shower, Cockpit - Hot & Cold
- Water Heater, 120V (11 Gallon)
- Water Inlet, Dockside

## Exclusions

---

Owner's personal belongings.

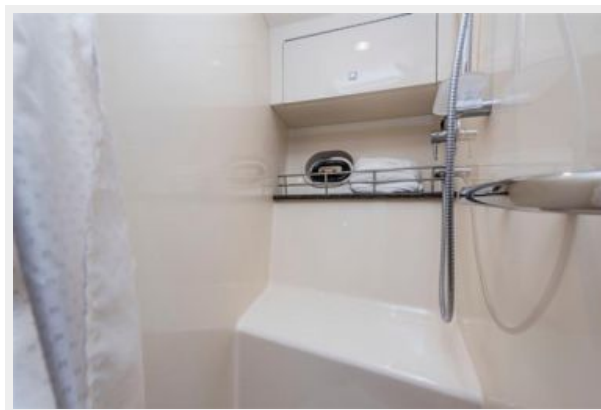
## Disclaimer

---

The Company offers the details of this vessel or yacht in good faith but cannot guarantee or warrant the accuracy of this information nor warrant the condition of the vessel. A buyer should instruct his representatives, agents, or his surveyors, to investigate such details as the buyer desires validated. This vessel or yacht is offered subject to prior sale, price change, or withdrawal without notice.

# PHOTOS





# CONTACTS

---

Andrey Shestakov, leading yacht broker of the sales department of Shestakov Yacht Sales Inc. Shestakov Yacht Sales Inc., the official representative of the Miami/Fort Lauderdale FL headquarters.

## Contact details

---

Email: **andrey@shestakovyachtsales.com**

Web: [shestakovyachtsales.com/en/](http://shestakovyachtsales.com/en/)

## Telephones

---

USA: **+1(954)274-4435**

## Office hours

---

Monday – Saturday: **9:00 - 21:00 EDT**

Sunday: **closed**

## Address

---



Harbour Towne Marina, 850 NE 3rd St,  
STE 213, Dania, FL 33004