

## SUGAR — FAIRLINE



**Builder:** FAIRLINE

**Year Built:** 2013

**Model:** Motor Yacht

**Price:** PRICE ON APPLICATION

**Location:** United States

**LOA:** 60' 6" (18.44m)

**Beam:** 15' 11" (4.85m)

**Max Draft:** 4' 7" (1.40m)

**Cruise Speed:** 25 Kts. (29 MPH)

**Max Speed:** 30 Kts. (35 MPH)

Our experienced yacht broker, Andrey Shestakov, will help you choose and buy a yacht that best suits your needs **SUGAR — FAIRLINE** from our catalogue. Presently, at Shestakov Yacht Sales Inc., we have a wide variety of yachts available on our sale's list. We also work in close contact with all the big yacht manufacturers from all over the world.

If you would like to buy a yacht **SUGAR — FAIRLINE** or would like help answering any questions concerning purchasing, selling or chartering a yacht, please call **+1(954)274-4435**

---

# TABLE OF CONTENTS

---

TABLE OF CONTENTS	2
SPECIFICATIONS	3
Basic Information	3
Dimensions	3
Speed, Capacities and Weight	3
Accommodations	3
Hull and Deck Information	4
Engine Information	4
PHOTOS	5
CONTACTS	13
Contact details	13
Telephones	13
Office hours	13
Address	13

---

# SPECIFICATIONS

---

## Basic Information

---

**Category:** Motor Yacht

**Model Year:** 2013

**Year Built:** 2013

**Country:** United States

**Vessel Top:** Open W/Bimini

**Fly Bridge:** Yes

**Cockpit:** Yes

## Dimensions

---

**LOA:** 60' 6" (18.44m)

**Beam:** 15' 11" (4.85m)

**Max Draft:** 4' 7" (1.40m)

**Clearance:** 15' 10" (4.83m)

## Speed, Capacities and Weight

---

**Cruise Speed:** 25 Kts. (29 MPH)

**Max Speed:** 30 Kts. (35 MPH)

**Gross Tonnage:** 23 Pounds

**Water Capacity:** 204 Gallons

**Fuel Capacity:** 572 Gallons

## Accommodations

---

**Total Cabins:** 3

**Total Berths:** 4

**Sleeps:** 8

**Total Heads:** 2

**Captain Cabin:** True

**Crew Cabin:** 1

**Crew Berths:** 1

**Crew Sleeps:** 1

**Crew Heads:** 1

---

## Hull and Deck Information

---

**Hull Material:** Fiberglass

**Hull Configuration:** Deep Vee

**Hull Color:** White

---

## Engine Information

---

**Engines:** 2

**Manufacturer:** Volvo

**Model:** D 13 900

**Engine Type:** Inboard

**Fuel Type:** Diesel

# PHOTOS





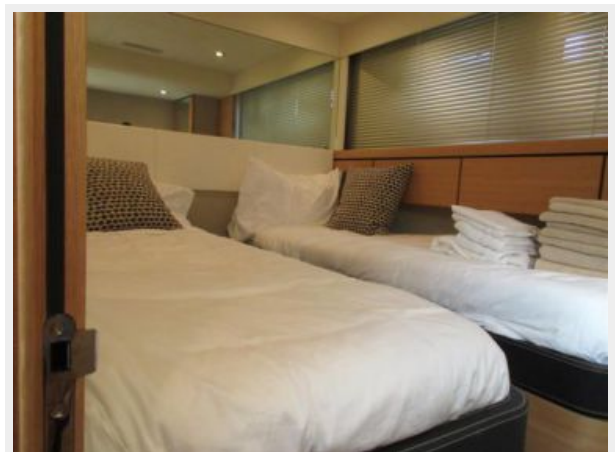
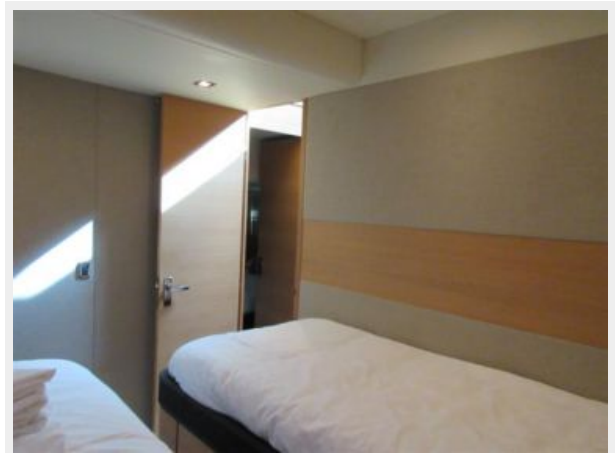
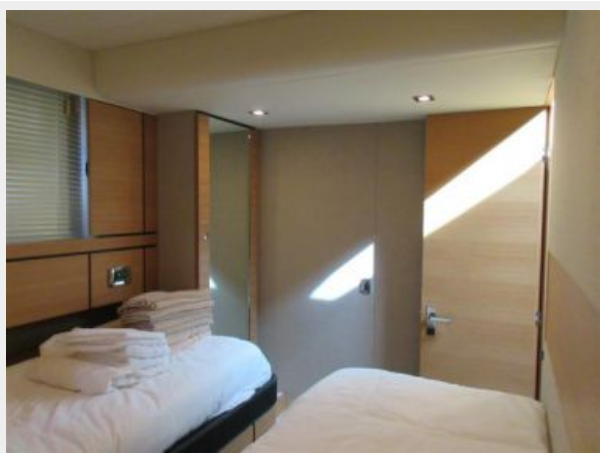






















# CONTACTS

---

Andrey Shestakov, leading yacht broker of the sales department of Shestakov Yacht Sales Inc. Shestakov Yacht Sales Inc., the official representative of the Miami/Fort Lauderdale FL headquarters.

## Contact details

---

Email: [andrey@shestakovyachtsales.com](mailto:andrey@shestakovyachtsales.com)

Web: [shestakovyachtsales.com/en/](http://shestakovyachtsales.com/en/)

## Telephones

---

USA: +1(954)274-4435

## Office hours

---

Monday – Saturday: **9:00 - 21:00** EDT

Sunday: **closed**

## Address

---



Harbour Towne Marina, 850 NE 3rd St,  
STE 213, Dania, FL 33004