

## OUR TRADE — BENETEAU



**Builder:** BENETEAU

**Year Built:** 2014

**Model:** Cruiser

**Price:** PRICE ON APPLICATION

**Location:** United States

**LOA:** 49' 0" (14.94m)

**Beam:** 14' 4" (4.37m)

**Max Draft:** 3' 7" (1.09m)

Our experienced yacht broker, Andrey Shestakov, will help you choose and buy a yacht that best suits your needs **Our Trade — BENETEAU** from our catalogue. Presently, at Shestakov Yacht Sales Inc., we have a wide variety of yachts available on our sale's list. We also work in close contact with all the big yacht manufacturers from all over the world.

If you would like to buy a yacht **Our Trade — BENETEAU** or would like help answering any questions concerning purchasing, selling or chartering a yacht, please call **+1(954)274-4435**

---

# TABLE OF CONTENTS

---

TABLE OF CONTENTS	2
SPECIFICATIONS	4
Overview	4
Basic Information	4
Dimensions	5
Speed, Capacities and Weight	5
Accommodations	5
Hull and Deck Information	5
Engine Information	5
PHOTOS	6
Running Shot 2	6
Running Shot Profile	6
Starboard Side	6
Profile	6
Aft View	6
Helm Controls	7
Helm	7
Salon View - Stock	7
Cockpit View	7
Cockpit Seating	7
TV	7
Master Stateroom - Stock	8
Master Stateroom	8
VIP Stateroom - Stock	8
VIP Stateroom	8
Twin Stateroom	8
Galley	8
Galley	9

---

Stairway to Cockpit	9
Master Head	9
Guest Head	9
Props	9
Haul Out	9
CONTACTS	10
Contact details	10
Telephones	10
Office hours	10
Address	10

---

# SPECIFICATIONS

---

## Overview

---

\*\*\*OUR TRADE AND BEST PRICED PRE-OWNED 49GT IN US\*\*\*

\*\*\*CALL TODAY FOR PRIVATE SHOWING\*\*\*

### BE SURE TO WATCH BOAT TEST VIDEO LINKS IN LISTING

This is truly the boat that has it all and packed into 49' of pure Luxury & Performance. From the spacious three staterooms, to the large and functional galley, to its IPS power plant, to its many many more features that set this vessel apart from all the competition. We welcome you aboard to inspect this Beneteau 49GT today.

### FEATURES:

- Volvo IPS 600 435Hp w/175Hrs
- Ray Marine Twin Hybrid Touch Screen GPS & Digital Radar
- Rear Aft Cameras & Engine Room Cameras
- Retractable Sun Awning on Aft Deck
- Sat TV
- Hydraulic Swim Platform
- Tender Garage w/ Retrieval Wench
- Aft BBQ & Cockpit Refridgerator
- Salon Ice-maker
- Forward Sun Pads w/ Back Rest
- Electric Hi Low Aft Teak Table
- Glendinning Power Cord Retriever

---

## Basic Information

---

**Category:** Cruiser

**Sub Category:** Express

**Model Year:** 2014

**Year Built:** 2014

**Country:** United States

---

## Dimensions

---

**LOA:** 49' 0" (14.94m)

**LWL:** 46' 3" (14.10m)

**Beam:** 14' 4" (4.37m)

**Max Draft:** 3' 7" (1.09m)

**Clearance:** 15' 5" (4.70m)

---

## Speed, Capacities and Weight

---

**Displacement:** 33038 Pounds

**Water Capacity:** 85 Gallons

**Fuel Capacity:** 172 Gallons

---

## Accommodations

---

**Total Cabins:** 3

**Total Berths:** 3

**Total Heads:** 2

---

## Hull and Deck Information

---

**Hull Material:** Fiberglass

---

## Engine Information

---

**Engines:** 2

**Manufacturer:** Volvo

**Model:** IPS 600

**Engine Type:** Other

**Fuel Type:** Diesel

# PHOTOS

**Running Shot 2**



**Running Shot Profile**



**Profile**



**Starboard Side**



**Aft View**



**Helm Controls**



**Helm**



**Salon View - Stock**



**Cockpit View**



**Cockpit Seating**



**TV**



**Master Stateroom - Stock**



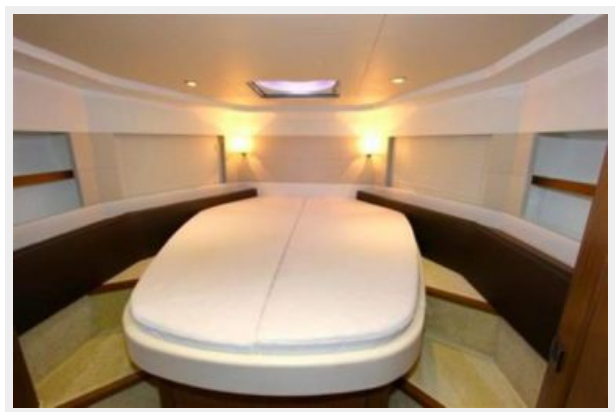
**Master Stateroom**



**VIP Stateroom - Stock**



**VIP Stateroom**



**Twin Stateroom**



**Galley**





**Galley**



**Stairway to Cockpit**



**Master Head**



**Guest Head**



**Props**



**Haul Out**



# CONTACTS

---

Andrey Shestakov, leading yacht broker of the sales department of Shestakov Yacht Sales Inc. Shestakov Yacht Sales Inc., the official representative of the Miami/Fort Lauderdale FL headquarters.

## Contact details

---

Email: [andrey@shestakovyachtsales.com](mailto:andrey@shestakovyachtsales.com)

Web: [shestakovyachtsales.com/en/](http://shestakovyachtsales.com/en/)

## Telephones

---

USA: +1(954)274-4435

## Office hours

---

Monday – Saturday: **9:00 - 21:00** EDT

Sunday: **closed**

## Address

---



Harbour Towne Marina, 850 NE 3rd St,  
STE 213, Dania, FL 33004